



## DRILL STEM TEST REPORT

Prepared For: **American Warrior Inc**

PO Box 399  
Garden City KS 67846

ATTN: Jason Alm

### **C-F Unit #1**

#### **25-18s-22w Ness,KS**

Start Date: 2013.12.30 @ 18:54:00

End Date: 2013.12.31 @ 04:09:15

Job Ticket #: 55373                      DST #: 1

Trilobite Testing, Inc  
PO Box 362 Hays, KS 67601  
ph: 785-625-4778 fax: 785-625-5620

Printed: 2014.01.02 @ 16:08:24



**TRILOBITE  
TESTING, INC**

# DRILL STEM TEST REPORT

American Warrior Inc  
PO Box 399  
Garden City KS 67846  
ATTN: Jason Alm

**25-18s-22w Ness, KS**

**C-F Unit #1**

Job Ticket: 55373

**DST#: 1**

Test Start: 2013.12.30 @ 18:54:00

## GENERAL INFORMATION:

Formation: **Ft. Scott**

Deviated: No Whipstock: ft (KB)

Time Tool Opened: 22:22:15

Time Test Ended: 04:09:15

Test Type: Conventional Bottom Hole (Initial)

Tester: Cody Bloedorn

Unit No: 73

**Interval: 4130.00 ft (KB) To 4180.00 ft (KB) (TVD)**

Reference Elevations: 2169.00 ft (KB)

Total Depth: 4180.00 ft (KB) (TVD)

2163.00 ft (CF)

Hole Diameter: 7.88 inches Hole Condition: Fair

KB to GR/CF: 6.00 ft

**Serial #: 8648 Outside**

Press@RunDepth: 228.52 psig @ 4167.00 ft (KB)

Capacity: 8000.00 psig

Start Date: 2013.12.30

End Date:

2013.12.31

Last Calib.:

2013.12.31

Start Time:

18:54:05

End Time:

04:09:15

Time On Btm:

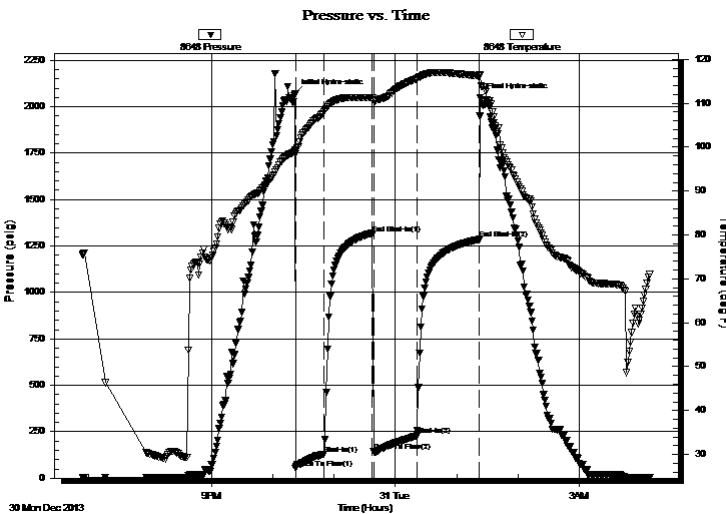
2013.12.30 @ 22:22:00

Time Off Btm:

2013.12.31 @ 01:23:00

**TEST COMMENT:** 30 - IF- B.O.B. in 3 minutes  
45 - IS- 7 1/2" return  
45 - FF- B.O.B. instantly  
60 - FS- B.O.B. in 4 minutes

## PRESSURE SUMMARY



Time (Min.)	Pressure (psig)	Temp (deg F)	Annotation
0	2071.29	99.33	Initial Hydro-static
1	51.92	98.48	Open To Flow (1)
29	130.29	108.03	Shut-In(1)
76	1316.09	111.23	End Shut-In(1)
77	143.09	110.59	Open To Flow (2)
119	228.52	115.54	Shut-In(2)
181	1286.20	116.21	End Shut-In(2)
181	2048.32	116.47	Final Hydro-static

## Recovery

Length (ft)	Description	Volume (bbl)
124.00	GHOCM, 5%M, 40%O, 55%G	0.65
248.00	GHOCM, 30%M, 30%G, 40%O	3.48
124.00	GO, 40%G, 60%O	1.74

## Gas Rates

	Choke (inches)	Pressure (psig)	Gas Rate (Mcf/d)



**TRILOBITE  
TESTING, INC.**

# DRILL STEM TEST REPORT

American Warrior Inc  
 PO Box 399  
 Garden City KS 67846  
 ATTN: Jason Alm

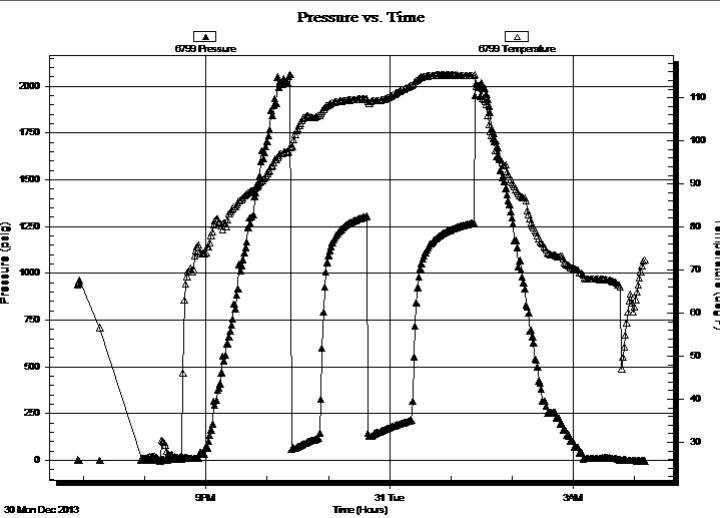
**25-18s-22w Ness, KS**  
**C-F Unit #1**  
 Job Ticket: 55373 **DST#: 1**  
 Test Start: 2013.12.30 @ 18:54:00

## GENERAL INFORMATION:

Formation: **Ft. Scott**  
 Deviated: No Whipstock: ft (KB)  
 Time Tool Opened: 22:22:15  
 Time Test Ended: 04:09:15  
 Interval: **4130.00 ft (KB) To 4180.00 ft (KB) (TVD)**  
 Total Depth: 4180.00 ft (KB) (TVD)  
 Hole Diameter: 7.88 inches Hole Condition: Fair  
 Test Type: Conventional Bottom Hole (Initial)  
 Tester: Cody Bloedorn  
 Unit No: 73  
 Reference Elevations: 2169.00 ft (KB)  
 2163.00 ft (CF)  
 KB to GR/CF: 6.00 ft

**Serial #: 6799 Inside**  
 Press@RunDepth: psig @ 4167.00 ft (KB) Capacity: 8000.00 psig  
 Start Date: 2013.12.30 End Date: 2013.12.31 Last Calib.: 2013.12.31  
 Start Time: 18:54:05 End Time: 04:10:45 Time On Btm:  
 Time Off Btm:

**TEST COMMENT:** 30 - IF- B.O.B. in 3 minutes  
 45 - IS- 7 1/2" return  
 45 - FF- B.O.B. instantly  
 60 - FS- B.O.B. in 4 minutes



## PRESSURE SUMMARY

Time (Min.)	Pressure (psig)	Temp (deg F)	Annotation

## Recovery

Length (ft)	Description	Volume (bbl)
124.00	GHOCM, 5%M, 40%O, 55%G	0.65
248.00	GHOCM, 30%M, 30%G, 40%O	3.48
124.00	GO, 40%G, 60%O	1.74

## Gas Rates

	Choke (inches)	Pressure (psig)	Gas Rate (Mcf/d)



**TRILOBITE  
TESTING, INC**

# DRILL STEM TEST REPORT

**TOOL DIAGRAM**

American Warrior Inc  
PO Box 399  
Garden City KS 67846  
ATTN: Jason Alm

**25-18s-22w Ness, KS**  
**C-F Unit #1**  
Job Ticket: 55373      **DST#: 1**  
Test Start: 2013.12.30 @ 18:54:00

**Tool Information**

Drill Pipe:	Length: 3993.00 ft	Diameter: 3.80 inches	Volume: 56.01 bbl	Tool Weight: 2500.00 lb
Heavy Wt. Pipe:	Length: 0.00 ft	Diameter: 0.00 inches	Volume: 0.00 bbl	Weight set on Packer: 30000.00 lb
Drill Collar:	Length: 120.00 ft	Diameter: 2.25 inches	Volume: 0.59 bbl	Weight to Pull Loose: 68000.00 lb
			<u>Total Volume: 56.60 bbl</u>	Tool Chased 0.00 ft
Drill Pipe Above KB:	12.00 ft			String Weight: Initial 60000.00 lb
Depth to Top Packer:	4130.00 ft			Final 61000.00 lb
Depth to Bottom Packer:	ft			
Interval between Packers:	50.00 ft			
Tool Length:	79.00 ft			
Number of Packers:	2	Diameter: 6.75 inches		

Tool Comments:

Tool Description	Length (ft)	Serial No.	Position	Depth (ft)	Accum. Lengths
Change Over Sub	1.00			4102.00	
Shut In Tool	5.00			4107.00	
Hydraulic tool	5.00			4112.00	
Jars	5.00			4117.00	
Safety Joint	3.00			4120.00	
Packer	5.00			4125.00	29.00      Bottom Of Top Packer
Packer	5.00			4130.00	
Stubb	1.00			4131.00	
Perforations	3.00			4134.00	
Change Over Sub	1.00			4135.00	
Drill Pipe	31.00			4166.00	
Change Over Sub	1.00			4167.00	
Recorder	0.00	6799	Inside	4167.00	
Recorder	0.00	8648	Outside	4167.00	
Perforations	10.00			4177.00	
Bullnose	3.00			4180.00	50.00      Bottom Packers & Anchor
<b>Total Tool Length:</b>	<b>79.00</b>				



**TRILOBITE  
TESTING, INC**

# DRILL STEM TEST REPORT

**FLUID SUMMARY**

American Warrior Inc  
PO Box 399  
Garden City KS 67846  
ATTN: Jason Alm

**25-18s-22w Ness,KS**  
**C-F Unit #1**  
Job Ticket: 55373      **DST#: 1**  
Test Start: 2013.12.30 @ 18:54:00

## Mud and Cushion Information

Mud Type: Gel Chem	Cushion Type:	Oil API: 35 deg API
Mud Weight: 9.00 lb/gal	Cushion Length: ft	Water Salinity: ppm
Viscosity: 51.00 sec/qt	Cushion Volume: bbl	
Water Loss: 9.59 in <sup>3</sup>	Gas Cushion Type:	
Resistivity: ohm.m	Gas Cushion Pressure: psig	
Salinity: 8100.00 ppm		
Filter Cake: inches		

## Recovery Information

Recovery Table

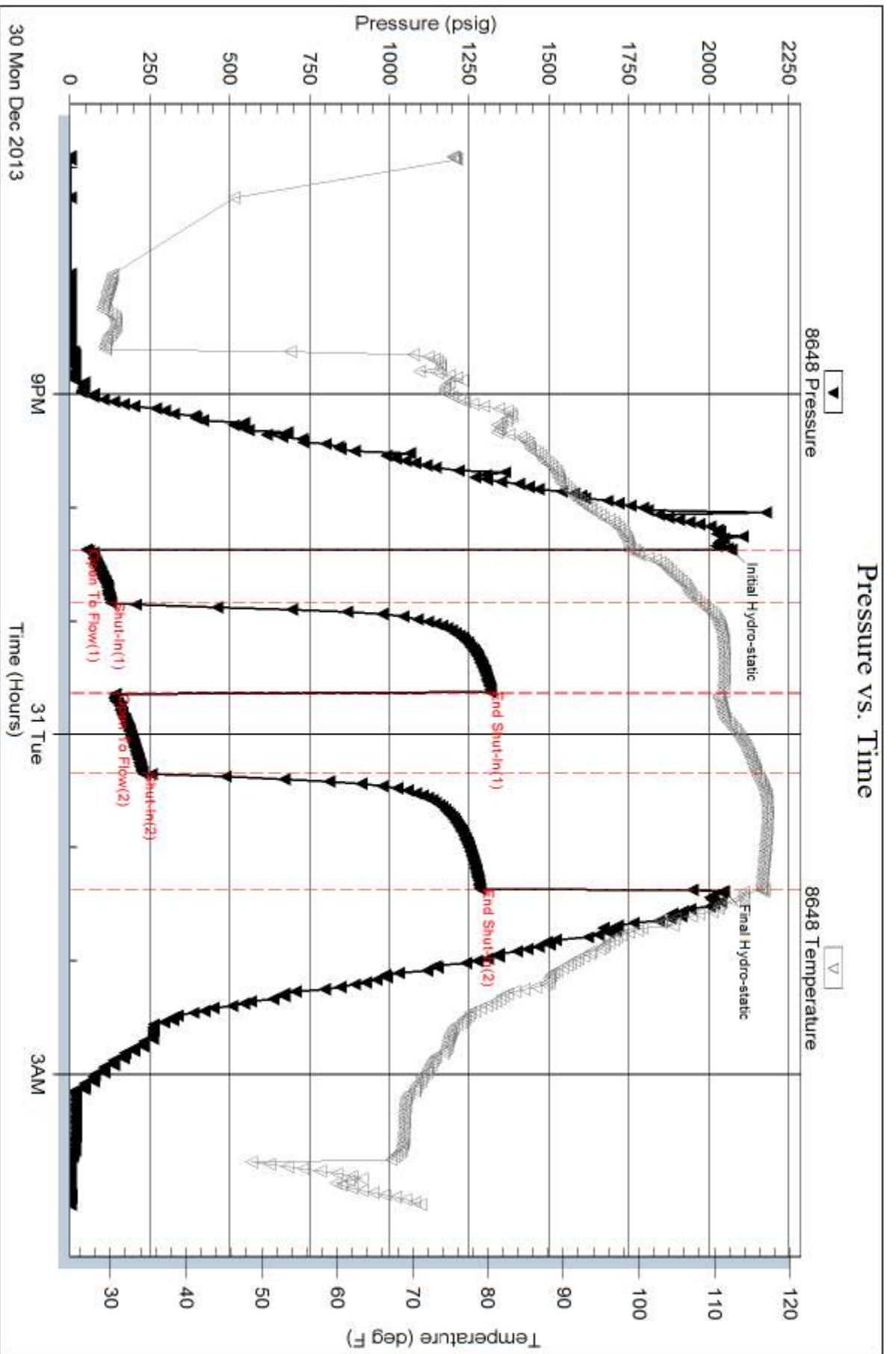
Length ft	Description	Volume bbl
124.00	GHOCM, 5%M, 40%O, 55%G	0.646
248.00	GHOCM, 30%M, 30%G, 40%O	3.479
124.00	GO, 40%G, 60%O	1.739

Total Length: 496.00 ft      Total Volume: 5.864 bbl

Num Fluid Samples: 0      Num Gas Bombs: 0      Serial #:

Laboratory Name:      Laboratory Location:

Recovery Comments: 31 @ 20 Degrees = 35 Gravity



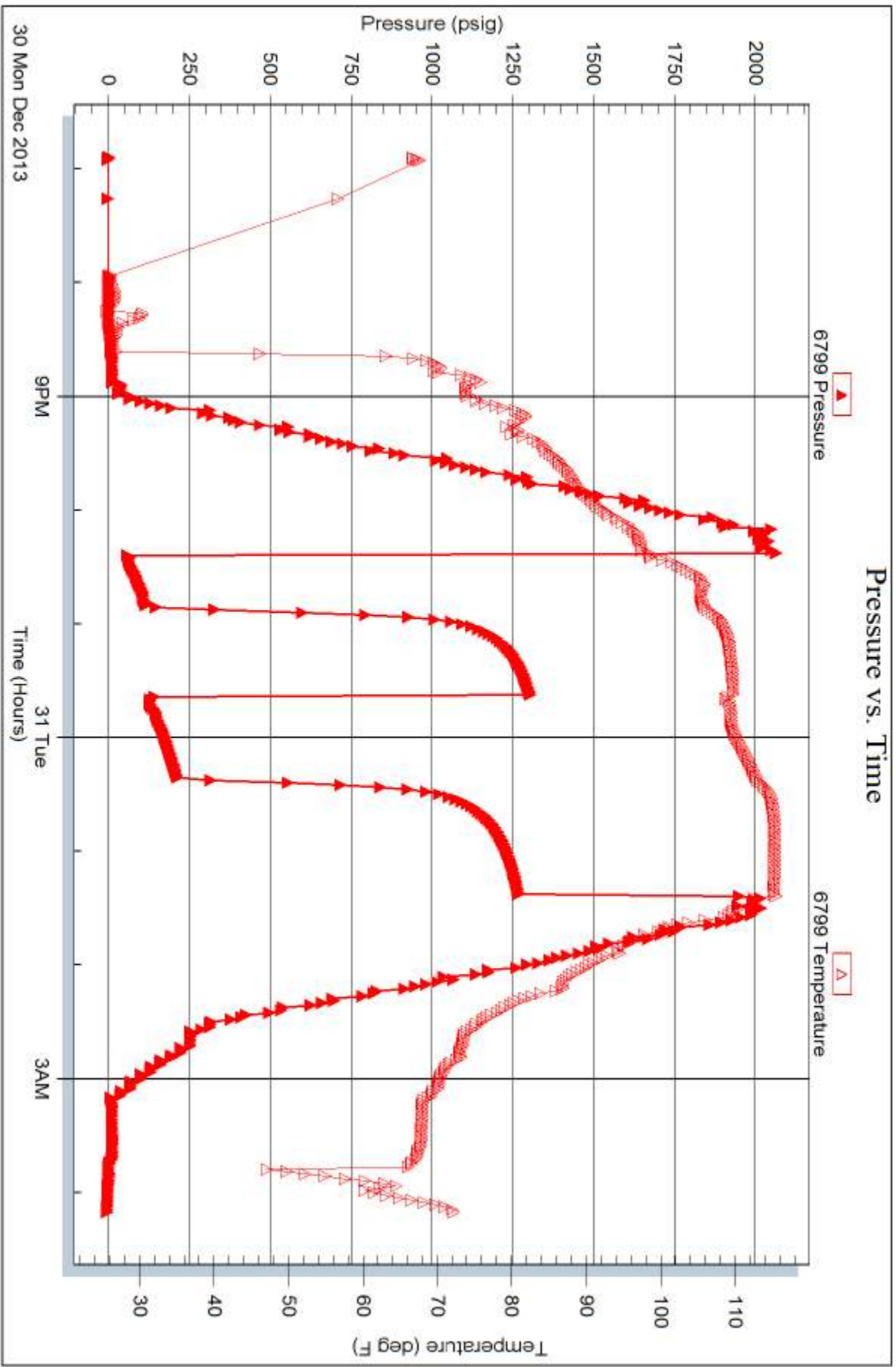
Serial #: 6799

Inside

American Warrior Inc

C-F Unit #1

DST Test Number: 1



Tribble Testing, Inc

Ref. No: 55373

Printed: 2014.01.02 @ 16:08:26



# TRILOBITE TESTING INC.

1515 Commerce Parkway • Hays, Kansas 67601

## Test Ticket

NO. **55373**

Well Name & No. C-F Unit #1 Test No. 1 Date 12-30-13  
 Company American Warrior Inc Elevation 2169 KB 2163 GL  
 Address Po Box 399, Garden City KS, 67846  
 Co. Rep / Geo. Jason Alm Rig Petromark 1  
 Location: Sec. 25 Twp. 18s Rge. 22w Co. Ness State KS

Interval Tested 4130 - 4180 Zone Tested FT Scott  
 Anchor Length 50' Drill Pipe Run 3993' Mud Wt. 9.3  
 Top Packer Depth 4125 Drill Collars Run 120' Vis 51  
 Bottom Packer Depth 4130 Wt. Pipe Run — WL 9.6  
 Total Depth 4180 Chlorides 8,100 ppm System LCM —

Blow Description IF - B.O.B. in 3 minutes  
ISI - 7 1/2" return  
FF - B.O.B. instantly  
FSI - B.O.B. in 4 minutes

Rec	Feet of	%gas	%oil	%water	%mud
<u>124</u>	<u>640CM</u>	<u>55</u>	<u>40</u>	<u>5</u>	
<u>248</u>	<u>640CM</u>	<u>30</u>	<u>40</u>	<u>30</u>	
<u>124</u>	<u>60</u>	<u>40</u>	<u>60</u>		

Rec Total 496' BHT 116° Gravity 35 API RW — @ — °F Chlorides — ppm

(A) Initial Hydrostatic 2071  Test 1250 T-On Location 1812  
 (B) First Initial Flow 51  Jars 250 T-Started 1854 6:54pm  
 (C) First Final Flow 130  Safety Joint 75 T-Open 2223  
 (D) Initial Shut-In 1316  Circ Sub — T-Pulled 0123  
 (E) Second Initial Flow 143  Hourly Standby — T-Out 0405  
 (F) Second Final Flow 228  Mileage 117 RT x 2 344.10  
 (G) Final Shut-In 1286  Sampler —  
 (H) Final Hydrostatic 2048  Straddle —  
 Shale Packer —  
 Extra Packer —  
 Extra Recorder —  
 Day Standby —  
 Accessibility —

Comments Loaded tools 12-31-13  
@ 3:30pm  
 Ruined Shale Packer —  
 Ruined Packer —  
 Extra Copies —  
 Sub Total 0  
 Total 1919.10  
 MP/DST Disc't —

Initial Open 30  
 Initial Shut-In 45  
 Final Flow 45  
 Final Shut-In 60

Sub Total 1919.10  
 Approved By — Our Representative Cody B...

Trilobite Testing Inc. shall not be liable for damaged of any kind of the property or personnel of the one for whom a test is made, or for any loss suffered or sustained, directly or indirectly, through the use of its equipment, or its statements or opinion concerning the results of any test, tools lost or damaged in the hole shall be paid for at cost by the party for whom the test is made.