



TRILOBITE TESTING, INC.

DRILL STEM TEST REPORT

Great Plains Energy

15-16s-36w Thomas, Ks

6121 S 58th st ste B
Lincoln, Ne 68516

Luckert 1-15

ATTN: Clayton Erickson

Job Ticket: 53172

DST#: 3

Test Start: 2013.06.30 @ 13:32:17

GENERAL INFORMATION:

Formation: **LKC H-I**

Deviated: No Whipstock: ft (KB)

Time Tool Opened: 15:32:47

Time Test Ended: 20:11:02

Test Type: Conventional Bottom Hole (Reset)

Tester: Brandon Turley

Unit No: 60

Interval: 4342.00 ft (KB) To 4403.00 ft (KB) (TVD)

Reference Elevations: 3380.00 ft (KB)

Total Depth: 4403.00 ft (KB) (TVD)

3370.00 ft (CF)

Hole Diameter: 7.88 inches Hole Condition: Good

KB to GR/CF: 10.00 ft

Serial #: 8373

Inside

Press @ Run Depth: 290.32 psig @ 4343.00 ft (KB)

Capacity: 8000.00 psig

Start Date: 2013.06.30

End Date:

2013.06.30

Last Calib.:

2013.06.30

Start Time: 13:32:22

End Time:

20:11:01

Time On Btm:

2013.06.30 @ 15:31:17

Time Off Btm:

2013.06.30 @ 18:04:02

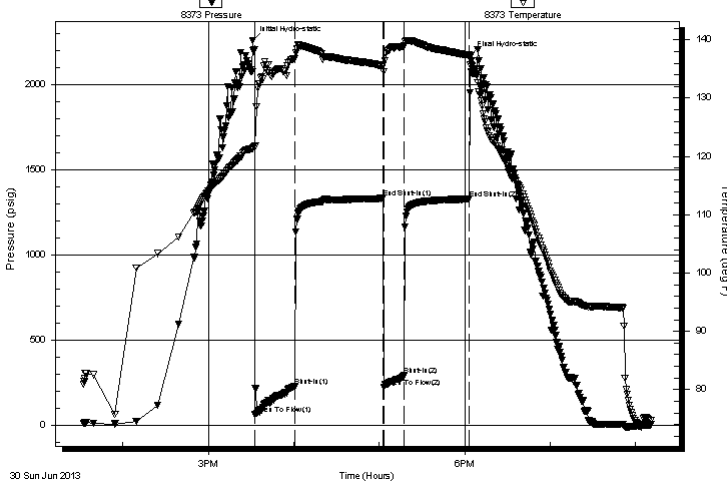
TEST COMMENT: IF: BOB in 7 min.

IS: No return.

FF: BOB in 11 min.

FS: No return.

Pressure vs. Time



PRESSURE SUMMARY

Time (Min.)	Pressure (psig)	Temp (deg F)	Annotation
0	2262.24	121.38	Initial Hydro-static
2	62.35	121.73	Open To Flow (1)
30	229.54	136.71	Shut-In(1)
92	1335.56	135.65	End Shut-In(1)
92	221.20	134.56	Open To Flow (2)
106	290.32	138.91	Shut-In(2)
152	1331.03	137.41	End Shut-In(2)
153	2171.06	135.68	Final Hydro-static

Recovery

Length (ft)	Description	Volume (bbl)
310.00	mcw 85%w 15%m	2.29
279.00	mcw 70%w 30%m	4.08

* Recovery from multiple tests

Gas Rates

	Choke (inches)	Pressure (psig)	Gas Rate (Mcf/d)



**TRILOBITE
TESTING, INC.**

DRILL STEM TEST REPORT

FLUID SUMMARY

Great Plains Energy

15-16s-36w Thomas, Ks

6121 S 58th st ste B
Lincoln, Ne 68516

Luckert 1-15

Job Ticket: 53172

DST#: 3

ATTN: Clayton Erickson

Test Start: 2013.06.30 @ 13:32:17

Mud and Cushion Information

Mud Type: Gel Chem

Cushion Type:

Oil API:

0 deg API

Mud Weight: 9.00 lb/gal

Cushion Length:

ft

Water Salinity:

32000 ppm

Viscosity: 60.00 sec/qt

Cushion Volume:

bbbl

Water Loss: 7.20 in³

Gas Cushion Type:

Resistivity: 0.00 ohm.m

Gas Cushion Pressure:

psig

Salinity: 5400.00 ppm

Filter Cake: 2.00 inches

Recovery Information

Recovery Table

Length ft	Description	Volume bbl
310.00	mcw 85%w 15%m	2.291
279.00	mcw 70%w 30%m	4.080

Total Length: 589.00 ft Total Volume: 6.371 bbl

Num Fluid Samples: 0

Num Gas Bombs: 0

Serial #:

Laboratory Name:

Laboratory Location:

Recovery Comments: .18@85=32000

