

TRILOBITE TESTING, INC.

DRILL STEM TEST REPORT

Mai Oil Operations
 8411 Preston RD Ste 800
 Dallas TX 75225-5520
 ATTN: Jim Musgrove

11-15s-14w Russell, KS
Flegler C #4
 Job Ticket: 039756 **DST#: 1**
 Test Start: 2013.11.15 @ 05:23:45

GENERAL INFORMATION:

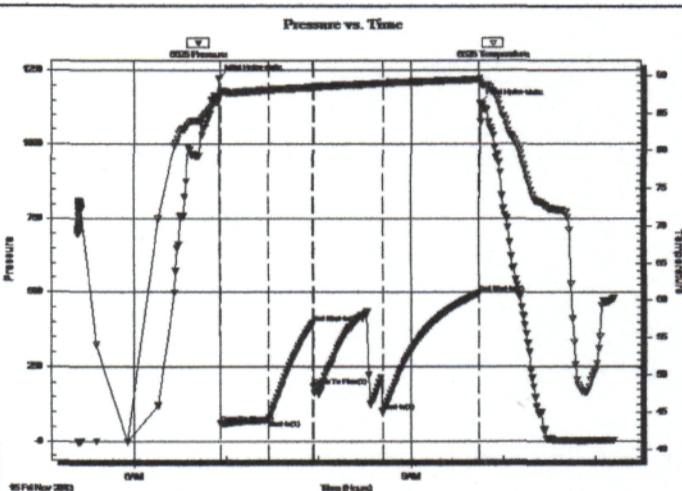
Formation: **Toronto**
 Deviated: No Whipstock: ft (KB)
 Time Tool Opened: 06:56:15
 Time Test Ended: 11:13:45
 Interval: **2416.00 ft (KB) To 2500.00 ft (KB) (TVD)**
 Total Depth: 2500.00 ft (KB) (TVD)
 Hole Diameter: 7.88 inches Hole Condition: Good
 Test Type: Conventional Bottom Hole (Initial)
 Tester: Jeff Brown
 Unit No: 67
 Reference Elevations: 1865.00 ft (KB)
 1857.00 ft (CF)
 KB to GR/CF: 8.00 ft

Serial #: 6625

Outside

Press@RunDepth: 98.95 psig @ 2483.00 ft (KB) Capacity: 8000.00 psig
 Start Date: 2013.11.15 End Date: 2013.11.15 Last Calib.: 2013.11.01
 Start Time: 05:23:46 End Time: 11:12:45 Time On Btmr: 2013.11.15 @ 06:55:15
 Time Off Btmr: 2013.11.15 @ 09:44:45

TEST COMMENT: FFP=Strong blow BOB in 2-1/2 min
 IS=Weak surface blow back
 FFP=Strong blow BOB in 1 min
 FS=Weak surface blow back



PRESSURE SUMMARY

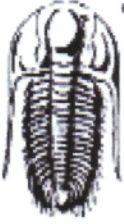
| Time (Min.) | Pressure (psig) | Temp (deg F) | Annotation |
|-------------|-----------------|--------------|----------------------|
| 0 | 1222.22 | 87.01 | Initial Hydro-static |
| 1 | 62.76 | 87.88 | Open To Flow (1) |
| 32 | 71.81 | 88.17 | Shut-In(1) |
| 61 | 395.62 | 88.49 | End Shut-In(1) |
| 62 | 185.44 | 88.48 | Open To Flow (2) |
| 107 | 98.95 | 89.06 | Shut-In(2) |
| 169 | 497.25 | 89.53 | End Shut-In(2) |
| 170 | 1138.58 | 89.70 | Final Hydro-static |

Recovery

| Length (ft) | Description | Volume (bbl) |
|-------------|---------------------|--------------|
| 80.00 | Mud with oil spot's | 0.39 |
| 0.00 | 670=GIP | 0.00 |
| | | |
| | | |
| | | |

Gas Rates

| | Choke (inches) | Pressure (psig) | Gas Rate (Mcf/d) |
|--|----------------|-----------------|------------------|
| | | | |



TRILOBITE TESTING, INC.

DRILL STEM TEST REPORT

Mai Oil Operations
 8411 Preston RD Ste 800
 Dallas TX 75225-5520
 ATTN: Jim Musgrove

11-15s-14w Russell, KS
Flegler C #4
 Job Ticket: 039757 **DST#: 2**
 Test Start: 2013.11.16 @ 07:20:16

GENERAL INFORMATION:

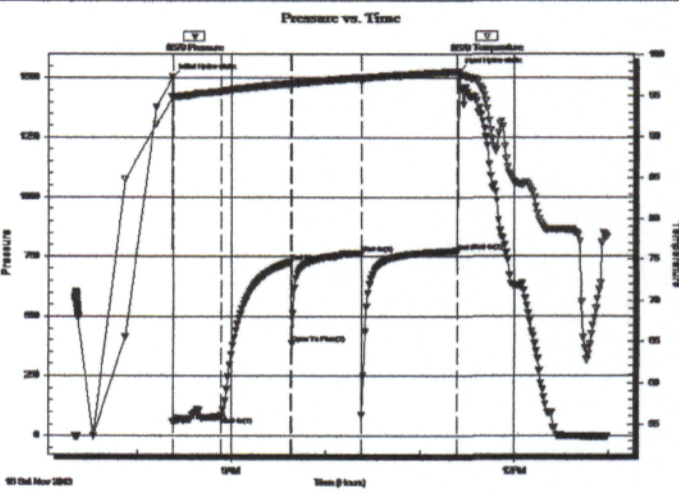
Formation: **Topeka/Plattsmouth**
 Deviated: No Whipstock: ft (KB)
 Time Tool Opened: 08:22:46
 Time Test Ended: 12:58:46
 Interval: **2899.00 ft (KB) To 2975.00 ft (KB) (TVD)**
 Total Depth: 2975.00 ft (KB) (TVD)
 Hole Diameter: 7.88 inches Hole Condition: Good
 Test Type: Conventional Bottom Hole (Reset)
 Tester: Jeff Brown
 Unit No: 67
 Reference Elevations: 1865.00 ft (KB)
 1857.00 ft (CF)
 KB to GR/CF: 8.00 ft

Serial #: 8679

Inside

Press@RunDepth: 762.50 psig @ 2966.00 ft (KB) Capacity: 8000.00 psig
 Start Date: 2013.11.16 End Date: 2013.11.16 Last Calib.: 2013.11.02
 Start Time: 07:20:17 End Time: 12:58:46 Time On Btmr: 2013.11.16 @ 08:22:16
 Time Off Btmr: 2013.11.16 @ 11:24:46

TEST COMMENT: IFP=Weak blow built to 3 1/2"
 ISF=Weak surface blow back died out in 6 min
 FFP=Weak surface blow
 FSF=Dead no blow back



PRESSURE SUMMARY

| Time (Min.) | Pressure (psig) | Temp (deg F) | Annotation |
|-------------|-----------------|--------------|----------------------|
| 0 | 1503.13 | 94.85 | Initial Hydro-static |
| 1 | 58.48 | 94.69 | Open To Flow (1) |
| 31 | 80.94 | 95.53 | Shut-in(1) |
| 76 | 725.34 | 96.51 | End Shut-in(1) |
| 76 | 383.21 | 96.43 | Open To Flow (2) |
| 120 | 762.50 | 97.20 | Shut-in(2) |
| 182 | 771.03 | 97.93 | End Shut-in(2) |
| 183 | 1526.08 | 97.82 | Final Hydro-static |

Recovery

| Length (ft) | Description | Volume (bbl) |
|-------------|----------------|--------------|
| 63.00 | VSOCM 2%O 98%M | 0.31 |
| | | |
| | | |
| | | |
| | | |

* Recovery from multiple tests

Gas Rates

| | Choke (inches) | Pressure (psig) | Gas Rate (Mcf/d) |
|--|----------------|-----------------|------------------|
| | | | |



TRILOBITE TESTING, INC

DRILL STEM TEST REPORT

Mai Oil Operations
 8411 Preston RD Ste 800
 Dallas TX 75225-5520
 ATTN: Jim Musgrove

11-15s-14w Russell,KS
Flegler C #4
 Job Ticket: 039758 DST#: 3
 Test Start: 2013.11.17 @ 22:39:57

GENERAL INFORMATION:

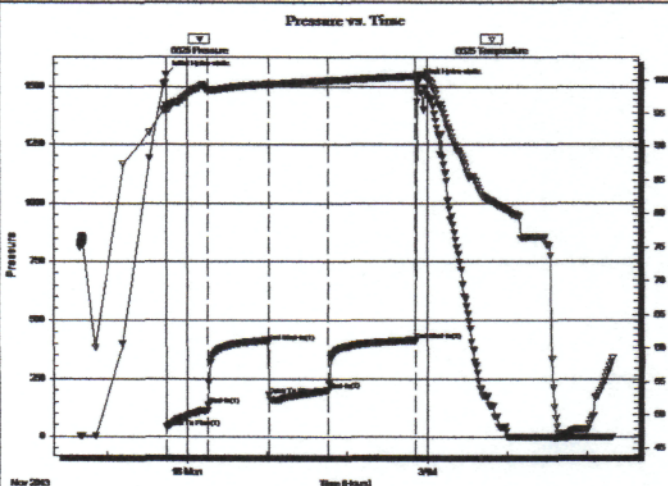
Formation: **LKC A-C**
 Deviated: No Whipstock: ft (KB)
 Time Tool Opened: 23:44:57
 Time Test Ended: 05:18:27
 Interval: **3052.00 ft (KB) To 3100.00 ft (KB) (TVD)**
 Total Depth: 3100.00 ft (KB) (TVD)
 Hole Diameter: 7.88 inches Hole Condition: Good
 Test Type: Conventional Bottom Hole (Reset)
 Tester: Jeff Brown
 Unit No: 67
 Reference Elevations: 1865.00 ft (KB)
 1857.00 ft (CF)
 KB to GR/CF: 8.00 ft

Serial #: 6625

Outside

Press@RunDepth: 199.87 psig @ 3088.00 ft (KB) Capacity: 8000.00 psig
 Start Date: 2013.11.17 End Date: 2013.11.18 Last Calib.: 2013.11.03
 Start Time: 22:39:58 End Time: 05:18:27 Time On Btm: 2013.11.17 @ 23:44:27
 Time Off Btm: 2013.11.18 @ 02:52:57

TEST COMMENT: IFP=Good blow BOB in 8 min
 IS=Dead no blow back
 FFP=Good blow BOB in 13 min
 FS=Dead no blow back



PRESSURE SUMMARY

| Time (Min.) | Pressure (psig) | Temp (deg F) | Annotation |
|-------------|-----------------|--------------|----------------------|
| 0 | 1552.00 | 96.17 | Initial Hydro-static |
| 1 | 41.74 | 95.95 | Open To Flow (1) |
| 32 | 136.71 | 98.54 | Shut-In(1) |
| 77 | 406.12 | 99.37 | End Shut-In(1) |
| 77 | 179.87 | 99.36 | Open To Flow (2) |
| 122 | 199.87 | 99.90 | Shut-In(2) |
| 187 | 413.16 | 100.60 | End Shut-In(2) |
| 189 | 1517.58 | 100.87 | Final Hydro-static |

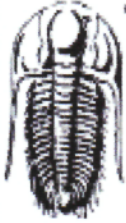
Recovery

| Length (ft) | Description | Volume (bbl) |
|-------------|---------------------------|--------------|
| 126.00 | VSOCMW 2%O 10%M 88%W | 1.77 |
| 220.00 | GOCWM 10%G 15%O 15%W 60%M | 3.09 |
| 5.00 | Gassy Oil 10%G 90%O | 0.07 |
| 0.00 | 126=GIP | 0.00 |

* Recovery from multiple tests

Gas Rates

| | Choke (inches) | Pressure (psig) | Gas Rate (Mcf/d) |
|--|----------------|-----------------|------------------|
| | | | |



TRILOBITE TESTING, INC.

DRILL STEM TEST REPORT

Mai Oil Operations
 8411 Preston RD Ste 800
 Dallas TX 75225-5520
 ATTN: Jim Musgrove

11-15s-14w Russell,KS
Flegler C #4
 Job Ticket: 039759 **DST#: 4**
 Test Start: 2013.11.17 @ 21:23:24

GENERAL INFORMATION:

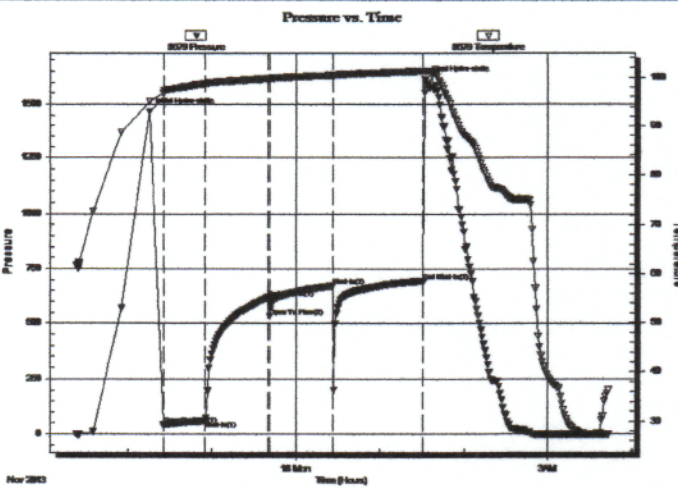
Formation: **LKC H-J**
 Deviated: No Whipstock: ft (KB)
 Time Tool Opened: 22:25:24
 Time Test Ended: 03:48:54
 Interval: **3206.00 ft (KB) To 3275.00 ft (KB) (TVD)**
 Total Depth: 3275.00 ft (KB) (TVD)
 Hole Diameter: 7.88 inches Hole Condition: Good
 Test Type: Conventional Bottom Hole (Initial)
 Tester: Jeff Brown
 Unit No: 67
 Reference Elevations: 1865.00 ft (KB)
 1857.00 ft (CF)
 KB to GR/CF: 8.00 ft

Serial #: 8679

Inside

Press@RunDepth: 672.70 psig @ 3242.00 ft (KB)
 Start Date: 2013.11.17 End Date: 2013.11.18
 Start Time: 21:23:25 End Time: 03:42:54
 Capacity: 8000.00 psig
 Last Calib.: 2013.11.04
 Time On Btm: 2013.11.17 @ 22:15:24
 Time Off Btm: 2013.11.18 @ 01:32:24

TEST COMMENT: IFP=Fair blow Built to 5 1/2"
 IS=Dead no blow back
 FFP=Weak surface blow died out in 20 min
 FS=Dead no blow back



PRESSURE SUMMARY

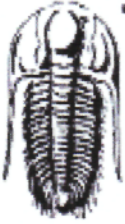
| Time (Min.) | Pressure (psig) | Temp (deg F) | Annotation |
|-------------|-----------------|--------------|----------------------|
| 0 | 1466.09 | 95.13 | Initial Hydro-static |
| 10 | 41.76 | 96.74 | Open To Flow (1) |
| 40 | 60.68 | 98.68 | Shut-In(1) |
| 85 | 619.22 | 99.73 | End Shut-In(1) |
| 86 | 532.11 | 99.74 | Open To Flow (2) |
| 131 | 672.70 | 100.42 | Shut-In(2) |
| 196 | 695.37 | 101.22 | End Shut-In(2) |
| 197 | 1610.65 | 101.23 | Final Hydro-static |

Recovery

| Length (ft) | Description | Volume (bbl) |
|-------------|--------------------|--------------|
| 60.00 | Mud with oil spots | 0.84 |
| | | |
| | | |
| | | |
| | | |

Gas Rates

| | Choke (inches) | Pressure (psig) | Gas Rate (Mcf/d) |
|--|----------------|-----------------|------------------|
| | | | |



TRILOBITE TESTING, INC.

DRILL STEM TEST REPORT

Mai Oil Operations
 8411 Preston RD Ste 800
 Dallas TX 75225-5520
 ATTN: Jim Musgrove

11-15s-14w Russell, KS
Flegler C #4
 Job Ticket: 039760 **DST#: 5**
 Test Start: 2013.11.18 @ 11:42:32

GENERAL INFORMATION:

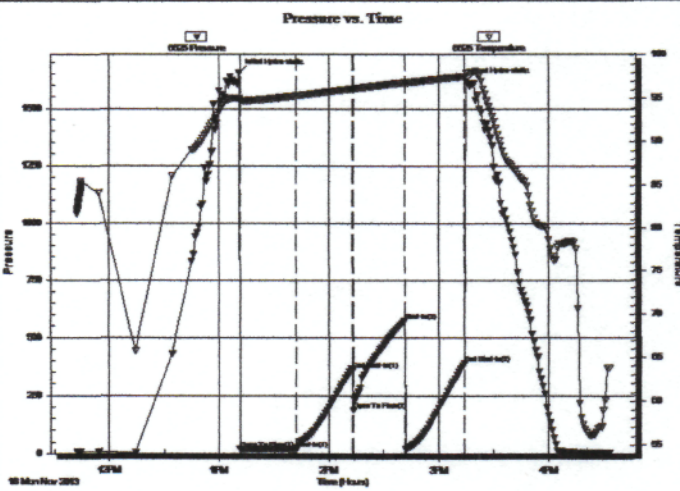
Formation: **Arbuckle**
 Deviated: No Whipstock: ft (KB)
 Time Tool Opened: 13:11:32
 Time Test Ended: 16:33:02
 Interval: **3288.00 ft (KB) To 3318.00 ft (KB) (TVD)**
 Total Depth: 3318.00 ft (KB) (TVD)
 Hole Diameter: 7.88 inches Hole Condition: Good
 Test Type: Conventional Bottom Hole (Reset)
 Tester: Jeff Brown
 Unit No: 67
 Reference Elevations: 1865.00 ft (KB)
 1857.00 ft (CF)
 KB to GR/CF: 8.00 ft

Serial #: 6625

Outside

Press@RunDepth: 572.17 psig @ 3291.00 ft (KB) Capacity: 8000.00 psig
 Start Date: 2013.11.18 End Date: 2013.11.18 Last Calib.: 2013.11.04
 Start Time: 11:42:33 End Time: 16:33:02 Time On Btmr: 2013.11.18 @ 13:11:02
 Time Off Btmr: 2013.11.18 @ 15:15:02

TEST COMMENT: IF=Weak blow built to 1/8"
 IS=Dead no blow back
 FFP=Dead no blow
 FS=Dead no blow back



PRESSURE SUMMARY

| Time (Min.) | Pressure (psig) | Temp (deg F) | Annotation |
|-------------|-----------------|--------------|----------------------|
| 0 | 1654.61 | 95.06 | Initial Hydro-static |
| 1 | 18.63 | 94.78 | Open To Flow (1) |
| 31 | 17.65 | 95.32 | Shut-In(1) |
| 62 | 359.50 | 96.13 | End Shut-In(1) |
| 63 | 188.61 | 96.10 | Open To Flow (2) |
| 91 | 572.17 | 96.85 | Shut-In(2) |
| 123 | 387.21 | 97.57 | End Shut-In(2) |
| 124 | 1616.76 | 97.94 | Final Hydro-static |

Recovery

| Length (ft) | Description | Volume (bbl) |
|-------------|--------------------|--------------|
| 15.00 | Mud with oil spots | 0.21 |
| | | |
| | | |
| | | |
| | | |

* Recovery from multiple tests

Gas Rates

| Choke (inches) | Pressure (psig) | Gas Rate (Mcf/d) |
|----------------|-----------------|------------------|
| | | |



TRIBOLITE TESTING, INC.

DRILL STEM TEST REPORT

Mai Oil Operations
 8411 Preston RD Ste 800
 Dallas TX 75225-5520
 ATTN: Jim Musgrove

11-15s-14w Russell, KS
Flegler C #4
 Job Ticket: 039761 DST#: 6
 Test Start: 2013.11.18 @ 22:56:46

GENERAL INFORMATION:

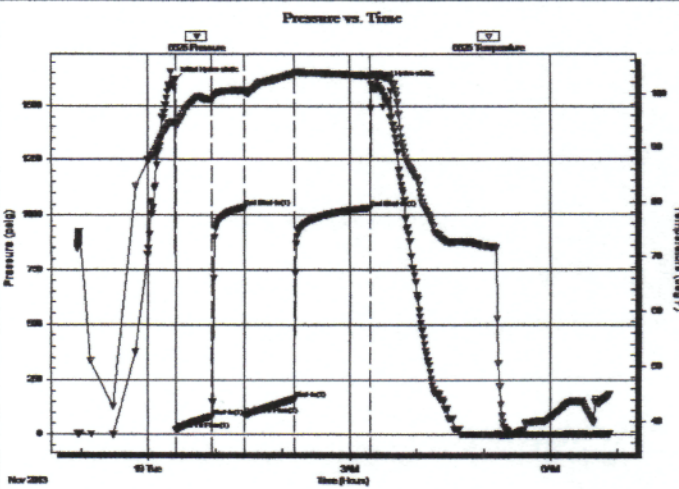
Formation: **Arbuckle**
 Deviated: No Whipstock: ft (KB)
 Time Tool Opened: 00:24:46
 Time Test Ended: 06:52:46
 Interval: **3288.00 ft (KB) To 3331.00 ft (KB) (TVD)**
 Total Depth: 3331.00 ft (KB) (TVD)
 Hole Diameter: 7.88 inches Hole Condition: Good
 Test Type: Conventional Bottom Hole (Reset)
 Tester: Jeff Brown
 Unit No: 67
 Reference Elevations: 1865.00 ft (KB)
 1857.00 ft (CF)
 KB to GR/CF: 8.00 ft

Serial #: 6625

Outside

Press@RunDepth: 161.52 psig @ 3324.00 ft (KB) Capacity: 8000.00 psig
 Start Date: 2013.11.18 End Date: 2013.11.19 Last Calib.: 2013.11.05
 Start Time: 22:56:47 End Time: 06:52:46 Time On Btrm: 2013.11.19 @ 00:24:16
 Time Off Btrm: 2013.11.19 @ 03:19:46

TEST COMMENT: FFP=Good blow BOB in 10 min
 IS=Weak blow back built to 2"
 FFP=Good blow BOB 13 min
 FS=Weak blow back



PRESSURE SUMMARY

| Time (Min.) | Pressure (psig) | Temp (deg F) | Annotation |
|-------------|-----------------|--------------|----------------------|
| 0 | 1618.35 | 94.49 | Initial Hydro-static |
| 1 | 21.05 | 93.97 | Open To Flow (1) |
| 33 | 82.91 | 98.89 | Shut-In(1) |
| 62 | 1034.37 | 100.56 | End Shut-In(1) |
| 62 | 90.31 | 100.32 | Open To Flow (2) |
| 106 | 161.52 | 103.54 | Shut-In(2) |
| 175 | 1032.02 | 103.19 | End Shut-In(2) |
| 176 | 1600.59 | 103.39 | Final Hydro-static |

Recovery

| Length (ft) | Description | Volume (bbl) |
|-------------|-----------------------|--------------|
| 189.00 | GHOCM 10%G 35 %O 55%M | 2.65 |
| 221.00 | Gassy Oil 20 %G 80%O | 3.10 |
| 0.00 | 220=GIP | 0.00 |
| | | |
| | | |

* Recovery from multiple tests

Gas Rates

| | Choke (Inches) | Pressure (psig) | Gas Rate (Mcf/d) |
|--|----------------|-----------------|------------------|
| | | | |