

**TRILOBITE TESTING, INC.**

**DRILL STEM TEST REPORT**

Mai Oil Operations  
 8411 Preston Rd STE 800  
 Dallas TX 75225  
 ATTN: Kurt Talbott

**7-17s-14w Barton,KS**  
**Axman-Stoss Unit #1**  
 Job Ticket: 56029 **DST#: 1**  
 Test Start: 2013.12.18 @ 20:30:34

**GENERAL INFORMATION:**

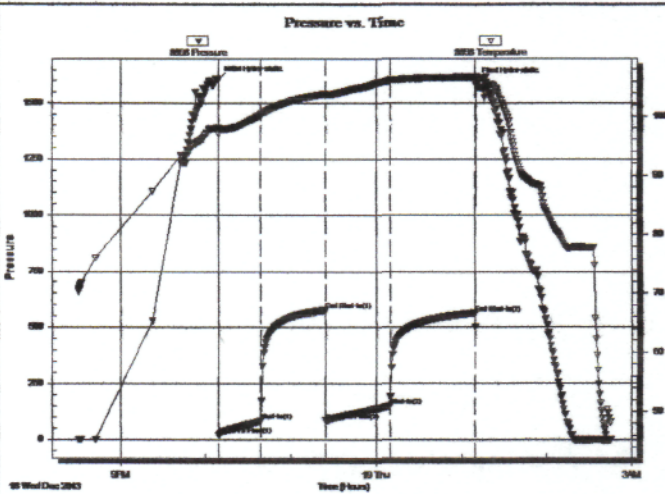
Formation: **LKC E-G**  
 Deviated: No Whipstock: ft (KB)  
 Time Tool Opened: 22:09:14  
 Time Test Ended: 02:45:04  
 Interval: **3260.00 ft (KB) To 3305.00 ft (KB) (TVD)**  
 Total Depth: 3305.00 ft (KB) (TVD)  
 Hole Diameter: 7.88 inches Hole Condition: Good  
 Test Type: Conventional Bottom Hole (Initial)  
 Tester: Tate Lang  
 Unit No: 49  
 Reference Elevations: 1963.00 ft (KB)  
 1955.00 ft (CF)  
 KB to GR/CF: 8.00 ft

**Serial #: 8898**

**Outside**

Press@RunDepth: 149.69 psig @ 3269.00 ft (KB) Capacity: 8000.00 psig  
 Start Date: 2013.12.18 End Date: 2013.12.19 Last Calib.: 2013.12.19  
 Start Time: 20:30:35 End Time: 02:45:04 Time On Btm: 2013.12.18 @ 22:09:04  
 Time Off Btm: 2013.12.19 @ 01:10:24

**TEST COMMENT:** B.O.B. In 20 mins  
 Dead no blow back  
 B.O.B. In 30 mins  
 Dead no blow back



**PRESSURE SUMMARY**

Time (Min.)	Pressure (psig)	Temp (deg F)	Annotation
0	1606.31	97.98	Initial Hydro-static
1	21.28	96.90	Open To Flow (1)
30	82.96	100.31	Shut-In(1)
76	575.52	103.83	End Shut-In(1)
76	85.48	103.61	Open To Flow (2)
121	149.69	106.09	Shut-In(2)
181	559.12	106.65	End Shut-In(2)
182	1597.16	106.65	Final Hydro-static

**Recovery**

Length (ft)	Description	Volume (bbl)
180.00	95%W 5%M	2.25
90.00	10%W 90%M	1.26

**Gas Rates**

	Choke (inches)	Pressure (psig)	Gas Rate (Mcf/d)



**TRILOBITE TESTING, INC.**

**DRILL STEM TEST REPORT**

Mai Oil Operations  
 8411 Preston Rd STE 800  
 Dallas TX 75225  
 ATTN: Kurt Talbott

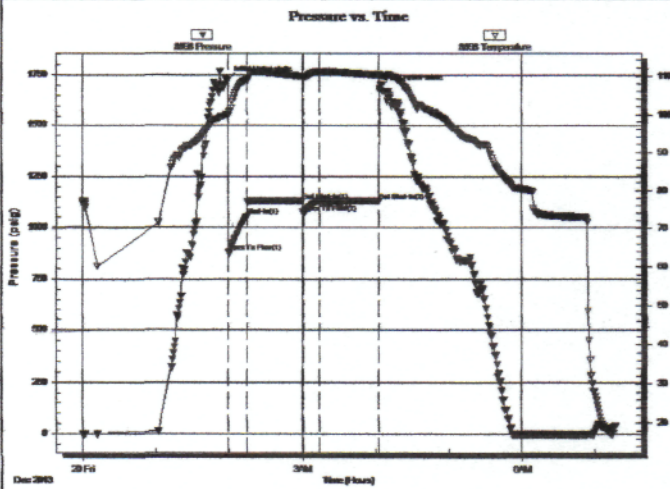
**7-17s-14w Barton,KS**  
**Axman-Stoss Unit #1**  
 Job Ticket: 56030 **DST#: 2**  
 Test Start: 2013.12.20 @ 00:00:05

**GENERAL INFORMATION:**

Formation: **Arbuckle**  
 Deviated: No Whipstock: ft (KB)  
 Time Tool Opened: 01:59:25  
 Time Test Ended: 07:16:14  
 Interval: **3414.00 ft (KB) To 3497.00 ft (KB) (TVD)**  
 Total Depth: 3497.00 ft (KB) (TVD)  
 Hole Diameter: 7.88 inches Hole Condition: Good  
 Test Type: Conventional Bottom Hole (Reset)  
 Tester: Tate Lang  
 Unit No: 49  
 Reference Elevations: 1963.00 ft (KB)  
 1955.00 ft (CF)  
 KB to GR/CF: 8.00 ft

**Serial #: 8898 Outside**  
 Press@RunDepth: 1129.71 psig @ 3429.00 ft (KB) Capacity: 8000.00 psig  
 Start Date: 2013.12.20 End Date: 2013.12.20 Last Calib.: 2013.12.20  
 Start Time: 00:00:06 End Time: 07:16:15 Time On Btm: 2013.12.20 @ 01:59:05  
 Time Off Btm: 2013.12.20 @ 04:03:15

**TEST COMMENT:** B.O.B. in 30 sec  
 Dead no blow back  
 B.O.B. in 30 sec  
 Dead no blow back



**PRESSURE SUMMARY**

Time (Min.)	Pressure (psig)	Temp (deg F)	Annotation
0	1726.41	99.87	Initial Hydro-static
1	880.83	99.65	Open To Flow (1)
16	1054.34	108.89	Shut-In(1)
62	1130.44	109.87	End Shut-In(1)
62	1072.31	109.84	Open To Flow (2)
75	1129.71	111.10	Shut-In(2)
124	1130.57	110.20	End Shut-In(2)
125	1685.72	110.32	Final Hydro-static

**Recovery**

Length (ft)	Description	Volume (bbl)
1860.00	98%W 2%M	25.82
310.00	50%W 50%M	4.35
280.00	30%W 70%M	3.93

\* Recovery from multiple tests

**Gas Rates**

	Choke (inches)	Pressure (psig)	Gas Rate (Mcf/d)