



DRILL STEM TEST REPORT

Prepared For: **Shelby Resources LLC**

445 Union Building Suite 208Lakewood,
Colorado 80228

ATTN: Jeremy Schwartz

Fisher Farms #1-15

15-25s-14w Stafford

Start Date: 2014.01.12 @ 00:00:00

End Date: 2014.01.12 @ 00:00:00

Job Ticket #: 17114 DST #: 2

Superior Testers Enterprises LLC
PO Box 138 Great Bend KS 67530
1-800-792-6902

Printed: 2014.01.12 @ 07:31:59



DRILL STEM TEST REPORT

Shelby Resources LLC

15-25s-14w Stafford

445 Union Building Suite 208 Lakewood, Colorado
80228

Fisher Farms #1-15

Job Ticket: 17114

DST#: 2

ATTN: Jeremy Schwartz

Test Start: 2014.01.12 @ 00:00:00

GENERAL INFORMATION:

Formation: **Mississippian**

Deviated: No Whipstock: ft (KB)

Time Tool Opened: 00:00:00

Time Test Ended: 00:00:00

Test Type: Conventional Bottom Hole (Initial)

Tester: Gene Budig

Unit No: 3320

Interval: 4090.00 ft (KB) To 4180.00 ft (KB) (TVD)

Reference Elevations: 1979.00 ft (KB)

Total Depth: 4190.00 ft (KB) (TVD)

1966.00 ft (CF)

Hole Diameter: 7.88 inches Hole Condition: Fair

KB to GR/CF: 13.00 ft

Serial #: 8419 Inside

Press@RunDepth: 196.33 psia @ 4176.28 ft (KB)

Capacity: 5000.00 psia

Start Date: 2014.01.12 End Date: 2014.01.12

Last Calib.: 2014.01.12

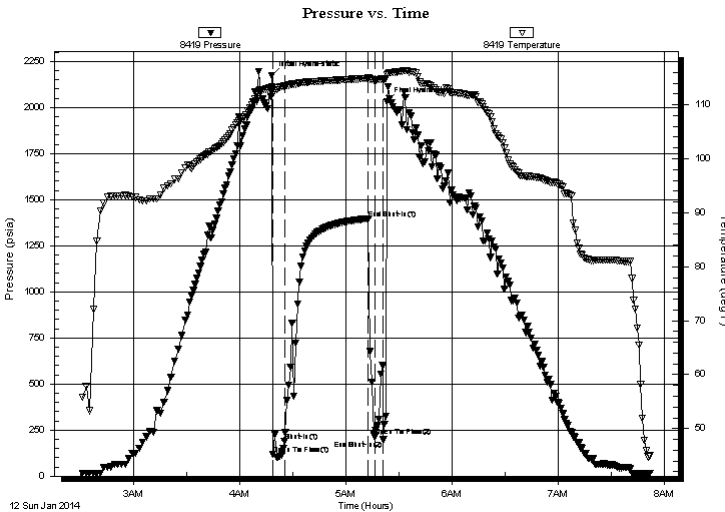
Start Time: 02:30:00 End Time: 07:51:30

Time On Btm: 2014.01.12 @ 04:18:00

Time Off Btm: 2014.01.12 @ 05:23:00

TEST COMMENT: 1st Opening 10 Minutes-Weak surface blow for 10 minutes
1st Shut-In 45 Minutes no blow back
2nd Opening 10 Minutes-Weak blow for 6 minutes and died

PRESSURE SUMMARY



Time (Min.)	Pressure (psia)	Temp (deg F)	Annotation
0	2171.45	113.34	Initial Hydro-static
1	118.38	112.77	Open To Flow (1)
7	187.68	113.43	Shut-In(1)
55	1396.60	114.90	End Shut-In(1)
58	213.84	114.59	Open To Flow (2)
63	196.33	114.65	End Shut-In(2)
65	2030.03	115.51	Final Hydro-static

Recovery

Length (ft)	Description	Volume (bbl)
120.00	drilling mud	0.59

Gas Rates

	Choke (inches)	Pressure (psia)	Gas Rate (Mcf/d)



DRILL STEM TEST REPORT

Shelby Resources LLC

15-25s-14w Stafford

445 Union Building Suite 208 Lakewood, Colorado
80228

Fisher Farms #1-15

Job Ticket: 17114

DST#: 2

ATTN: Jeremy Schwartz

Test Start: 2014.01.12 @ 00:00:00

GENERAL INFORMATION:

Formation: **Mississippian**

Deviated: No Whipstock: ft (KB)

Time Tool Opened: 00:00:00

Time Test Ended: 00:00:00

Test Type: Conventional Bottom Hole (Initial)

Tester: Gene Budig

Unit No: 3320

Interval: 4090.00 ft (KB) To 4180.00 ft (KB) (TVD)

Reference Elevations: 1979.00 ft (KB)

Total Depth: 4190.00 ft (KB) (TVD)

1966.00 ft (CF)

Hole Diameter: 7.88 inches Hole Condition: Fair

KB to GR/CF: 13.00 ft

Serial #: 8405 Outside

Press@RunDepth: 1404.46 psia @ 4177.28 ft (KB)

Capacity: 5000.00 psia

Start Date: 2014.01.12 End Date: 2014.01.12

Last Calib.: 2014.01.12

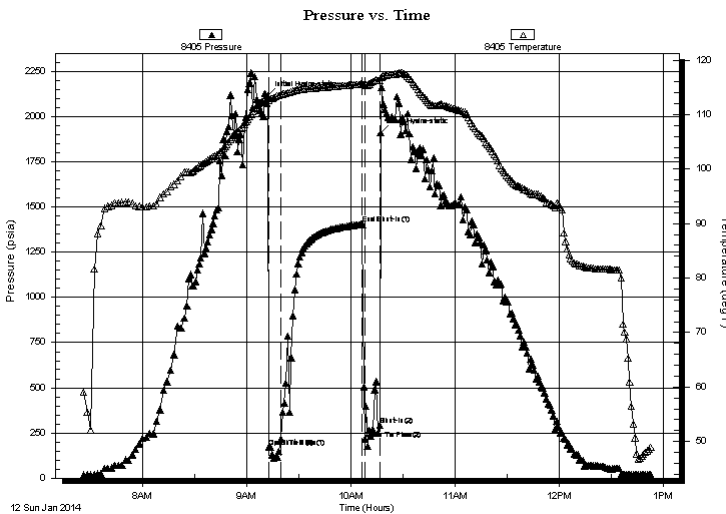
Start Time: 07:24:59 End Time: 12:52:29

Time On Btm: 2014.01.12 @ 09:11:59

Time Off Btm: 2014.01.12 @ 10:16:59

TEST COMMENT: 1st Opening 10 Minutes-Weak surface blow for 10 minutes
1st Shut-In 45 Minutes no blow back
2nd Opening 10 Minutes-Weak blow for 6 minutes and died

PRESSURE SUMMARY



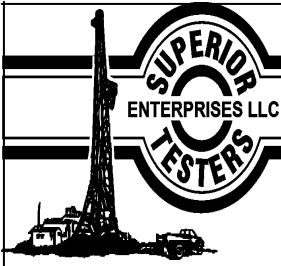
Time (Min.)	Pressure (psia)	Temp (deg F)	Annotation
0	2114.18	113.15	Initial Hydro-static
1	170.19	112.68	Open To Flow (1)
8	218.83	113.65	Shut-In(1)
55	1404.46	115.63	End Shut-In(1)
56	217.26	115.30	Open To Flow (2)
65	293.72	116.30	Shut-In(2)
65	1910.79	116.78	Final Hydro-static

Recovery

Length (ft)	Description	Volume (bbl)
120.00	drilling mud	0.59

Gas Rates

Choke (inches)	Pressure (psia)	Gas Rate (Mcf/d)



DRILL STEM TEST REPORT

TOOL DIAGRAM

Shelby Resources LLC

15-25s-14w Stafford

445 Union Building Suite 208 Lakewood, Colorado
80228

Fisher Farms #1-15

Job Ticket: 17114

DST#: 2

ATTN: Jeremy Schwartz

Test Start: 2014.01.12 @ 00:00:00

Tool Information

Drill Pipe:	Length: 3714.00 ft	Diameter: 3.80 inches	Volume: 52.10 bbl	Tool Weight: 2000.00 lb
Heavy Wt. Pipe:	Length: 0.00 ft	Diameter: 2.76 inches	Volume: 0.00 bbl	Weight set on Packer: 20000.00 lb
Drill Collar:	Length: 373.00 ft	Diameter: 2.25 inches	Volume: 1.83 bbl	Weight to Pull Loose: 84000.00 lb
			<u>Total Volume: 53.93 bbl</u>	Tool Chased 0.00 ft
Drill Pipe Above KB:	25.00 ft			String Weight: Initial 72000.00 lb
Depth to Top Packer:	4090.00 ft			Final 72000.00 lb
Depth to Bottom Packer:	ft			
Interval between Packers:	90.28 ft			
Tool Length:	118.28 ft			
Number of Packers:	2	Diameter: inches		

Tool Comments:

Tool Description	Length (ft)	Serial No.	Position	Depth (ft)	Accum. Lengths
------------------	-------------	------------	----------	------------	----------------

Shut-In Tool	5.00			4067.00	
Hydraulic Tool	5.00			4072.00	
Safety Joint	2.00			4074.00	
Jars	6.00			4080.00	
Packer	5.00			4085.00	28.00 Bottom Of Top Packer
Packer	5.00			4090.00	
Anchor	4.00			4094.00	
Change Over Sub	0.75			4094.75	
Drill Pipe	63.78			4158.53	
Change Over Sub	0.75			4159.28	
Anchor	16.00			4175.28	
Recorder	1.00	8419	Inside	4176.28	
Recorder	1.00	8405	Outside	4177.28	
Bullnose	3.00			4180.28	90.28 Bottom Packers & Anchor

Total Tool Length: 118.28



DRILL STEM TEST REPORT

FLUID SUMMARY

Shelby Resources LLC

15-25s-14w Stafford

445 Union Building Suite 208 Lakewood, Colorado
80228

Fisher Farms #1-15

Job Ticket: 17114

DST#: 2

ATTN: Jeremy Schwartz

Test Start: 2014.01.12 @ 00:00:00

Mud and Cushion Information

Mud Type: Gel Chem

Cushion Type:

Oil API:

deg API

Mud Weight: lb/gal

Cushion Length:

ft

Water Salinity:

ppm

Viscosity: 68.00 sec/qt

Cushion Volume:

bbl

Water Loss: 9.20 in³

Gas Cushion Type:

Resistivity: ohm.m

Gas Cushion Pressure:

psia

Salinity: 5000.00 ppm

Filter Cake: 1.00 inches

Recovery Information

Recovery Table

Length ft	Description	Volume bbl
120.00	dripping mud	0.590

Total Length: 120.00 ft Total Volume: 0.590 bbl

Num Fluid Samples: 0

Num Gas Bombs: 0

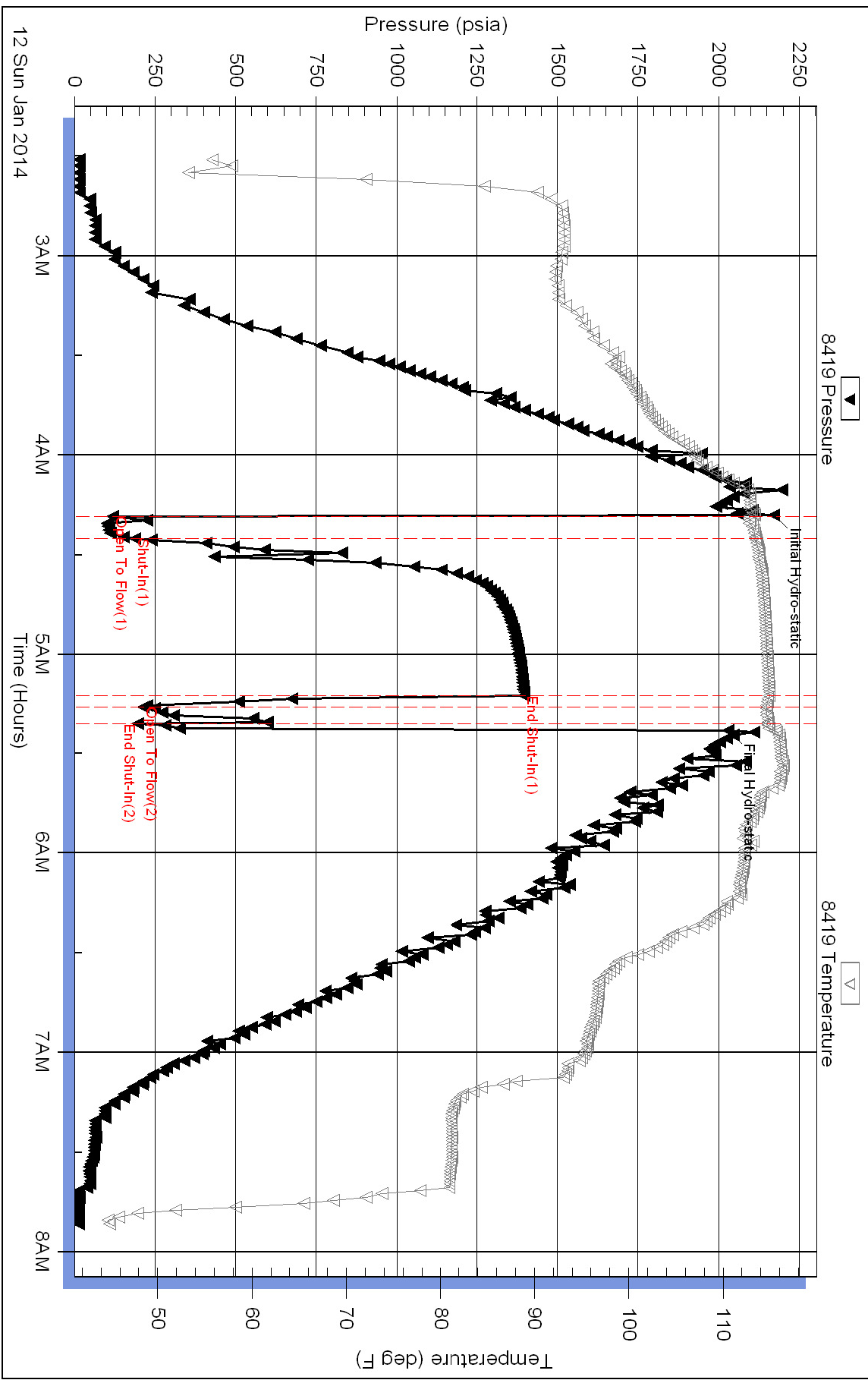
Serial #:

Laboratory Name:

Laboratory Location:

Recovery Comments:

Pressure vs. Time



Pressure vs. Time

