



**TRILOBITE  
TESTING, INC.**

# DRILL STEM TEST REPORT

Berexco L.L.C.  
2020 N. Bramblewood  
Wichita KS.  
67202  
ATTN: BRYAN BYNOG

**SEC. 27 - 1 S. - 36 W. - Rawlins co.**  
**Bernita #1-27**  
Job Ticket: 54868      **DST#: 4**  
Test Start: 2013.10.15 @ 09:30:00

## GENERAL INFORMATION:

Formation: **L.K.C. " D"**  
Deviated: No Whipstock: ft (KB)  
Time Tool Opened: 12:06:45  
Time Test Ended: 17:48:30  
Interval: **4294.00 ft (KB) To 4344.00 ft (KB) (TVD)**  
Total Depth: 4190.00 ft (KB) (TVD)  
Hole Diameter: 7.88 inches Hole Condition: Good  
Test Type: Conventional Bottom Hole (Reset)  
Tester: Bob Hamel  
Unit No: 44  
Reference Elevations: 3141.00 ft (KB)  
3129.00 ft (CF)  
KB to GR/CF: 12.00 ft

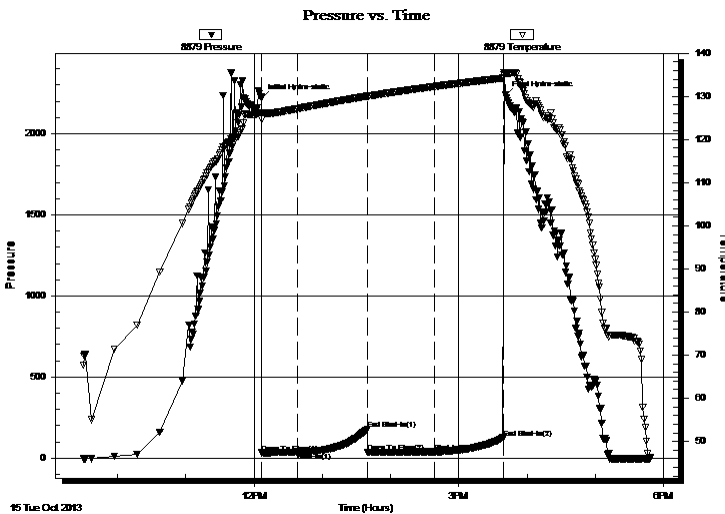
## Serial #: 8879

Inside

Press @ Run Depth: 37.70 psig @ 4341.00 ft (KB) Capacity: 8000.00 psig  
Start Date: 2013.10.15 End Date: 2013.10.15 Last Calib.: 2013.10.15  
Start Time: 09:30:05 End Time: 17:48:29 Time On Btm: 2013.10.15 @ 12:06:30  
Time Off Btm: 2013.10.15 @ 15:40:45

TEST COMMENT: I.F. - 30 - W.S.B. NO BUILD  
I.S.I. - 60 - NO B.B.  
F.F. - 60 - NO BLOW  
F.S.I. - 60 - NO B.B.

## PRESSURE SUMMARY



| Time (Min.) | Pressure (psig) | Temp (deg F) | Annotation           |
|-------------|-----------------|--------------|----------------------|
| 0           | 2218.80         | 126.26       | Initial Hydro-static |
| 1           | 32.43           | 124.69       | Open To Flow (1)     |
| 32          | 36.35           | 127.15       | Shut-In(1)           |
| 93          | 179.28          | 130.05       | End Shut-In(1)       |
| 94          | 35.69           | 129.99       | Open To Flow (2)     |
| 153         | 37.70           | 132.28       | Shut-In(2)           |
| 213         | 125.28          | 134.22       | End Shut-In(2)       |
| 215         | 2236.83         | 135.23       | Final Hydro-static   |

## Recovery

| Length (ft) | Description          | Volume (bbl) |
|-------------|----------------------|--------------|
| 3.00        | MUD W/ FEW OIL SPECS | 0.01         |
|             |                      |              |
|             |                      |              |
|             |                      |              |
|             |                      |              |

\* Recovery from multiple tests

## Gas Rates

| Choke (inches) | Pressure (psig) | Gas Rate (Mcf/d) |
|----------------|-----------------|------------------|
|                |                 |                  |



**TRILOBITE  
TESTING, INC.**

# DRILL STEM TEST REPORT

**FLUID SUMMARY**

Berexco L.L.C.

**SEC. 27 - 1 S. - 36 W. - Rawlins co.**

2020 N. Bramblewood  
Wichita KS.  
67202

**Bernita #1-27**

Job Ticket: 54868

**DST#: 4**

ATTN: BRYAN BYNOG

Test Start: 2013.10.15 @ 09:30:00

## Mud and Cushion Information

Mud Type: Gel Chem

Cushion Type:

Oil API:

deg API

Mud Weight: 9.00 lb/gal

Cushion Length:

ft

Water Salinity:

ppm

Viscosity: 67.00 sec/qt

Cushion Volume:

bbbl

Water Loss: 6.40 in<sup>3</sup>

Gas Cushion Type:

Resistivity: ohm.m

Gas Cushion Pressure:

psig

Salinity: 800.00 ppm

Filter Cake: 2.00 inches

## Recovery Information

Recovery Table

| Length<br>ft | Description          | Volume<br>bbl |
|--------------|----------------------|---------------|
| 3.00         | MUD W/ FEW OIL SPECS | 0.015         |

Total Length: 3.00 ft      Total Volume: 0.015 bbl

Num Fluid Samples: 0

Num Gas Bombs: 0

Serial #:

Laboratory Name:

Laboratory Location:

Recovery Comments:

