



**TRILOBITE TESTING, INC.**

# DRILL STEM TEST REPORT

Samuel Gary Jr&AssociatesInc

**12-11s-22w Trego**

1515 Wynkoop  
Ste 700  
Denver Co 80202  
ATTN: Dan Pritchard

**Walz FamilyTrust1-12**

Job Ticket: 54368 **DST#: 1**

Test Start: 2013.11.08 @ 23:26:03

## GENERAL INFORMATION:

Formation: **LKC C-D**  
 Deviated: No Whipstock: ft (KB)  
 Time Tool Opened: 01:14:43  
 Time Test Ended: 08:09:13  
 Interval: **3458.00 ft (KB) To 3506.00 ft (KB) (TVD)**  
 Total Depth: 3506.00 ft (KB) (TVD)  
 Hole Diameter: 7.85 inches Hole Condition: Fair  
 Test Type: Conventional Bottom Hole (Initial)  
 Tester: Ray Schwager  
 Unit No: 70  
 Reference Elevations: 2169.00 ft (KB)  
 2161.00 ft (CF)  
 KB to GR/CF: 8.00 ft

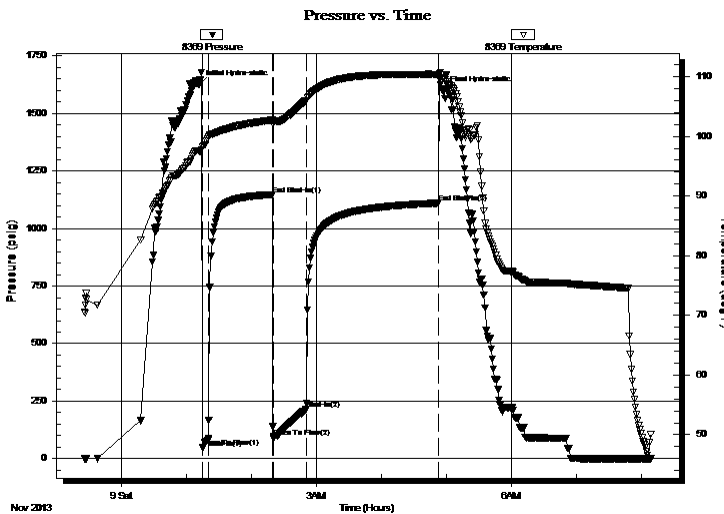
## Serial #: 8369

Inside

Press @RunDepth: 213.49 psig @ 3469.00 ft (KB) Capacity: 8000.00 psig  
 Start Date: 2013.11.08 End Date: 2013.11.09 Last Calib.: 2013.11.09  
 Start Time: 23:26:03 End Time: 08:09:13 Time On Btm: 2013.11.09 @ 01:11:58  
 Time Off Btm: 2013.11.09 @ 04:57:42

TEST COMMENT: 5-IFP-strg bl in 2min  
 60-ISIP-no bl  
 30-FFP-strg bl in 2min  
 120-FSIP-surface bl bk

## PRESSURE SUMMARY



Time (Min.)	Pressure (psig)	Temp (deg F)	Annotation
0	1624.60	97.51	Initial Hydro-static
3	49.52	98.18	Open To Flow (1)
9	86.31	99.86	Shut-In(1)
68	1147.70	102.72	End Shut-In(1)
69	95.17	102.45	Open To Flow (2)
99	213.49	106.00	Shut-In(2)
222	1110.91	110.39	End Shut-In(2)
226	1597.09	109.64	Final Hydro-static

## Recovery

Length (ft)	Description	Volume (bbl)
0.00	810'GIP	0.00
365.00	CO	5.12
95.00	MGO 20%G30%M50%O	1.33
35.00	O&GCMW 5%G5%M10%O70%W	0.49

## Gas Rates

Choke (inches)	Pressure (psig)	Gas Rate (Mcf/d)







**TRILOBITE  
TESTING, INC.**

# DRILL STEM TEST REPORT

**FLUID SUMMARY**

Samuel Gary Jr&AssociatesInc

**12-11s-22w Trego**

1515 Wynkoop  
Ste 700  
Denver Co 80202  
ATTN: Dan Pritchard

**Walz FamilyTrust1-12**

Job Ticket: 54368      **DST#: 1**  
Test Start: 2013.11.08 @ 23:26:03

## Mud and Cushion Information

Mud Type: Gel Chem  
Mud Weight: 9.00 lb/gal  
Viscosity: 50.00 sec/qt  
Water Loss: 7.60 in<sup>3</sup>  
Resistivity: ohm.m  
Salinity: 2000.00 ppm  
Filter Cake: 1.00 inches

Cushion Type:  
Cushion Length: ft  
Cushion Volume: bbl  
Gas Cushion Type:  
Gas Cushion Pressure: psig

Oil API: 38 deg API  
Water Salinity: 82000 ppm

## Recovery Information

Recovery Table

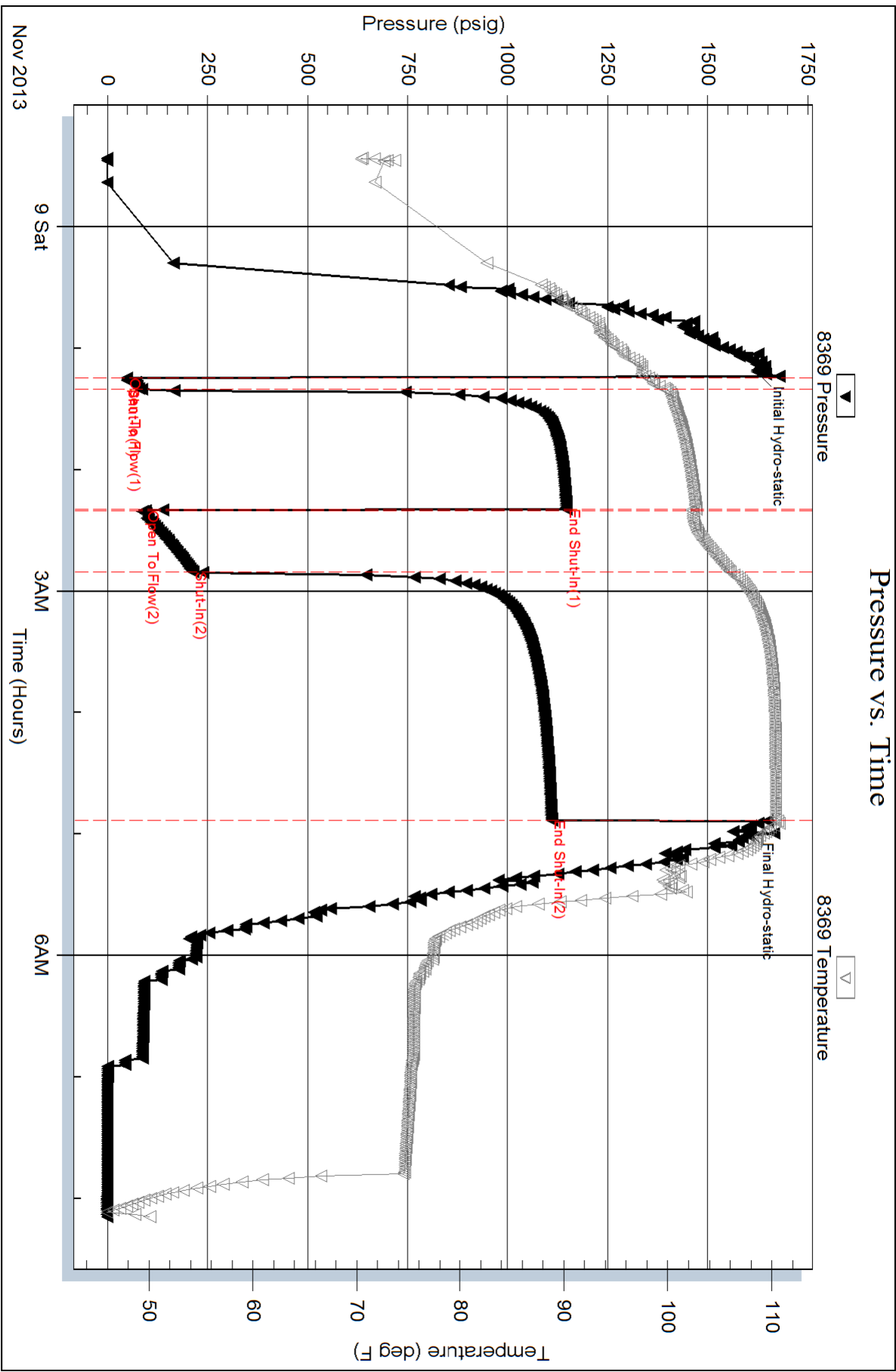
Length ft	Description	Volume bbl
0.00	810'GIP	0.000
365.00	CO	5.120
95.00	MGO 20%G30%M50%O	1.333
35.00	O&GCMW 5%G5%M10%O70%W	0.491

Total Length: 495.00 ft      Total Volume: 6.944 bbl

Num Fluid Samples: 0      Num Gas Bombs: 0      Serial #:

Laboratory Name:      Laboratory Location:

Recovery Comments: Sampler DATA:300MLgas 1400ML Oil 200ML Water 100ML Mud  
PSI: 1000#  
RW .1 @ 65F





Serial #: 8374

Fluid

Samuel Gary Jr & Associates Inc

Walz Family Trust 1 - 12

DST Test Number: 1

