



DRILL STEM TEST REPORT

Prepared For: **Gore Oil Company**

202 S. St Francis
Wichita KS 67202

ATTN: Pat Balthazor

Lynd B #2

28-11s-21w Trego KS

Start Date: 2013.07.23 @ 18:57:00

End Date: 2013.07.24 @ 05:41:00

Job Ticket #: 53935 DST #: 1

Trilobite Testing, Inc
PO Box 362 Hays, KS 67601
ph: 785-625-4778 fax: 785-625-5620

Printed: 2013.07.26 @ 10:47:59



TRILOBITE TESTING, INC

DRILL STEM TEST REPORT

Gore Oil Company

28-11s-21w Trego KS

202 S. St Francis
Wichita KS 67202

Lynd B #2

Job Ticket: 53935

DST#: 1

ATTN: Pat Balthazor

Test Start: 2013.07.23 @ 18:57:00

GENERAL INFORMATION:

Formation: **LKC "E-F"**

Deviated: No Whipstock: ft (KB)

Time Tool Opened: 23:23:30

Time Test Ended: 05:41:00

Test Type: Conventional Bottom Hole (Initial)

Tester: Cody Bloedorn

Unit No: 53

Interval: 3682.00 ft (KB) To 3716.00 ft (KB) (TVD)

Reference Elevations: 2286.00 ft (KB)

Total Depth: 3716.00 ft (KB) (TVD)

2280.00 ft (CF)

Hole Diameter: 7.88 inches Hole Condition: Fair

KB to GR/CF: 6.00 ft

Serial #: 6799

Inside

Press @ RunDepth: 128.03 psig @ 3683.00 ft (KB)

Capacity: 8000.00 psig

Start Date: 2013.07.23

End Date:

2013.07.24

Last Calib.: 2013.07.24

Start Time: 18:57:05

End Time:

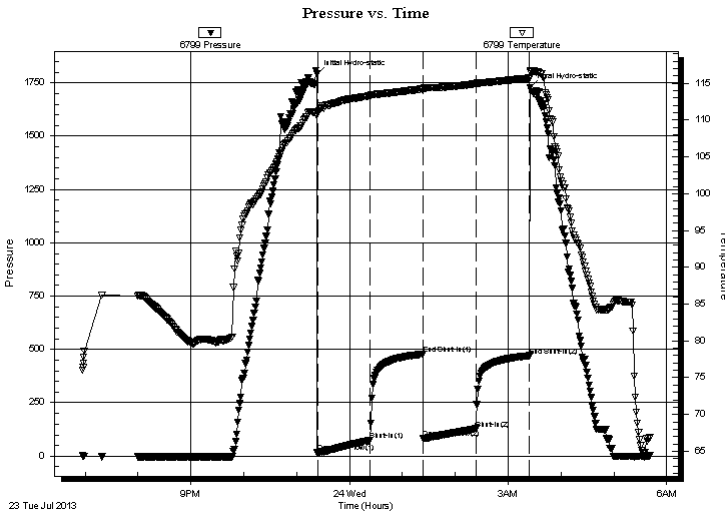
05:41:00

Time On Btm: 2013.07.23 @ 23:22:45

Time Off Btm: 2013.07.24 @ 03:25:00

TEST COMMENT: 60 - IF- 8" blow
60 - IS- No return
60 - FF- 4" blow
60 - FS- No return

PRESSURE SUMMARY



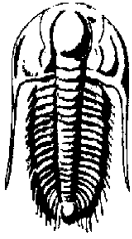
Time (Min.)	Pressure (psig)	Temp (deg F)	Annotation
0	1790.93	111.14	Initial Hydro-static
1	16.59	110.93	Open To Flow (1)
61	74.06	113.33	Shut-In(1)
121	478.08	114.23	End Shut-In(1)
121	83.71	114.09	Open To Flow (2)
181	128.03	114.94	Shut-In(2)
242	470.65	115.71	End Shut-In(2)
243	1726.71	116.65	Final Hydro-static

Recovery

Length (ft)	Description	Volume (bbl)
260.00	MW, 10%M, 90%W	3.65

Gas Rates

Choke (inches)	Pressure (psig)	Gas Rate (Mcf/d)



TRILOBITE
TESTING, INC

DRILL STEM TEST REPORT

Gore Oil Company

28-11s-21w Trego KS

202 S. St Francis
Wichita KS 67202

Lynd B #2

Job Ticket: 53935

DST#: 1

ATTN: Pat Balthazor

Test Start: 2013.07.23 @ 18:57:00

GENERAL INFORMATION:

Formation: **LKC "E-F"**

Deviated: No Whipstock: ft (KB)

Time Tool Opened: 23:23:30

Time Test Ended: 05:41:00

Test Type: Conventional Bottom Hole (Initial)

Tester: Cody Bloedorn

Unit No: 53

Interval: 3682.00 ft (KB) To 3716.00 ft (KB) (TVD)

Reference Elevations: 2286.00 ft (KB)

Total Depth: 3716.00 ft (KB) (TVD)

2280.00 ft (CF)

Hole Diameter: 7.88 inches Hole Condition: Fair

KB to GR/CF: 6.00 ft

Serial #: 8648 Outside

Press @RunDepth: psig @ 3683.00 ft (KB)

Capacity: 8000.00 psig

Start Date: 2013.07.23

End Date:

2013.07.24

Last Calib.:

2013.07.24

Start Time: 18:57:05

End Time:

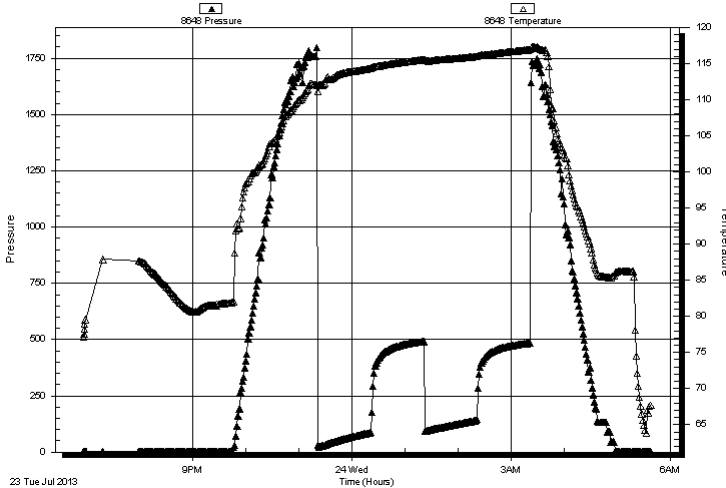
05:38:45

Time On Btm:

Time Off Btm:

TEST COMMENT: 60 - IF- 8" blow
60 - IS- No return
60 - FF- 4" blow
60 - FS- No return

Pressure vs. Time



PRESSURE SUMMARY

Time (Min.)	Pressure (psig)	Temp (deg F)	Annotation

Recovery

Length (ft)	Description	Volume (bbl)
260.00	MW, 10%M, 90%W	3.65

Gas Rates

	Choke (inches)	Pressure (psig)	Gas Rate (Mcf/d)



**TRILOBITE
TESTING, INC**

DRILL STEM TEST REPORT

TOOL DIAGRAM

Gore Oil Company

28-11s-21w Trego KS

202 S. St Francis
Wichita KS 67202

Lynd B #2

Job Ticket: 53935

DST#: 1

ATTN: Pat Balthazor

Test Start: 2013.07.23 @ 18:57:00

Tool Information

Drill Pipe:	Length: 3687.00 ft	Diameter: 3.80 inches	Volume: 51.72 bbl	Tool Weight: 2000.00 lb
Heavy Wt. Pipe:	Length: 0.00 ft	Diameter: 0.00 inches	Volume: 0.00 bbl	Weight set on Packer: 0.00 lb
Drill Collar:	Length: 0.00 ft	Diameter: 0.00 inches	Volume: 0.00 bbl	Weight to Pull Loose: 80000.00 lb
			<u>Total Volume: 51.72 bbl</u>	Tool Chased 0.00 ft
Drill Pipe Above KB:	26.00 ft			String Weight: Initial 60000.00 lb
Depth to Top Packer:	3682.00 ft			Final 62000.00 lb
Depth to Bottom Packer:	ft			
Interval between Packers:	34.00 ft			
Tool Length:	55.00 ft			
Number of Packers:	2	Diameter: 6.75 inches		

Tool Comments:

Tool Description

Tool Description	Length (ft)	Serial No.	Position	Depth (ft)	Accum. Lengths
Change Over Sub	1.00			3662.00	
Shut In Tool	5.00			3667.00	
Hydraulic tool	5.00			3672.00	
Packer	5.00			3677.00	21.00 Bottom Of Top Packer
Packer	5.00			3682.00	
Stubb	1.00			3683.00	
Recorder	0.00	6799	Inside	3683.00	
Recorder	0.00	8648	Outside	3683.00	
Perforations	30.00			3713.00	
Bullnose	3.00			3716.00	34.00 Bottom Packers & Anchor
Total Tool Length:	55.00				



TRILOBITE
TESTING, INC

DRILL STEM TEST REPORT

FLUID SUMMARY

Gore Oil Company

28-11s-21w Trego KS

202 S. St Francis
Wichita KS 67202

Lynd B #2

Job Ticket: 53935

DST#: 1

ATTN: Pat Balthazor

Test Start: 2013.07.23 @ 18:57:00

Mud and Cushion Information

Mud Type: Gel Chem

Cushion Type:

Oil API:

deg API

Mud Weight: 9.00 lb/gal

Cushion Length:

ft

Water Salinity:

ppm

Viscosity: 55.00 sec/qt

Cushion Volume:

bbbl

Water Loss: 7.98 in³

Gas Cushion Type:

Resistivity: ohm.m

Gas Cushion Pressure:

psig

Salinity: 800.00 ppm

Filter Cake: inches

Recovery Information

Recovery Table

Length ft	Description	Volume bbl
260.00	MW, 10%M, 90%W	3.647

Total Length: 260.00 ft Total Volume: 3.647 bbl

Num Fluid Samples: 0

Num Gas Bombs: 0

Serial #:

Laboratory Name:

Laboratory Location:

Recovery Comments:

Serial #: 6799

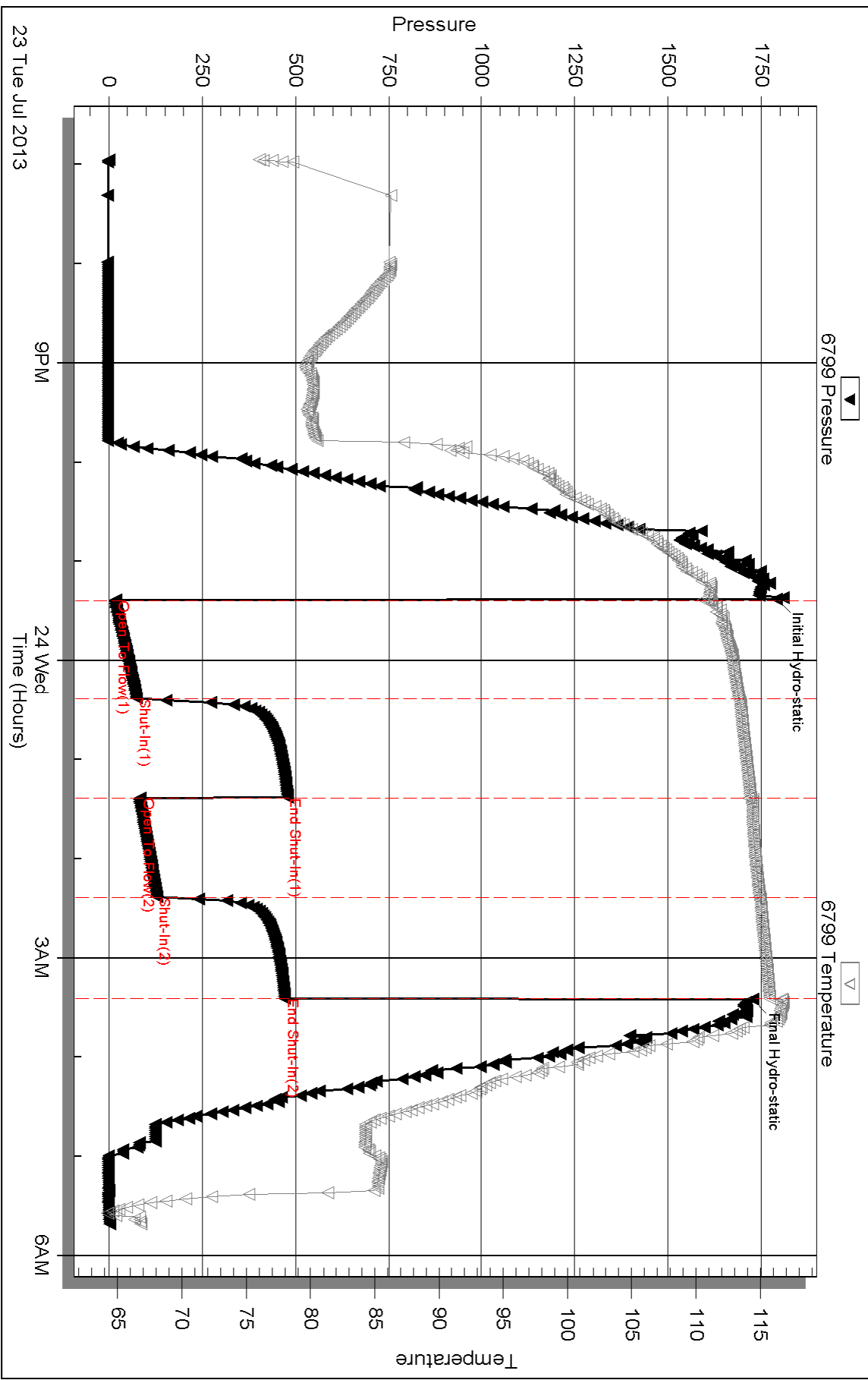
Inside

Gore Oil Company

Lynd B#2

DST Test Number: 1

Pressure vs. Time



Triobite Testing, Inc

Ref. No: 53935

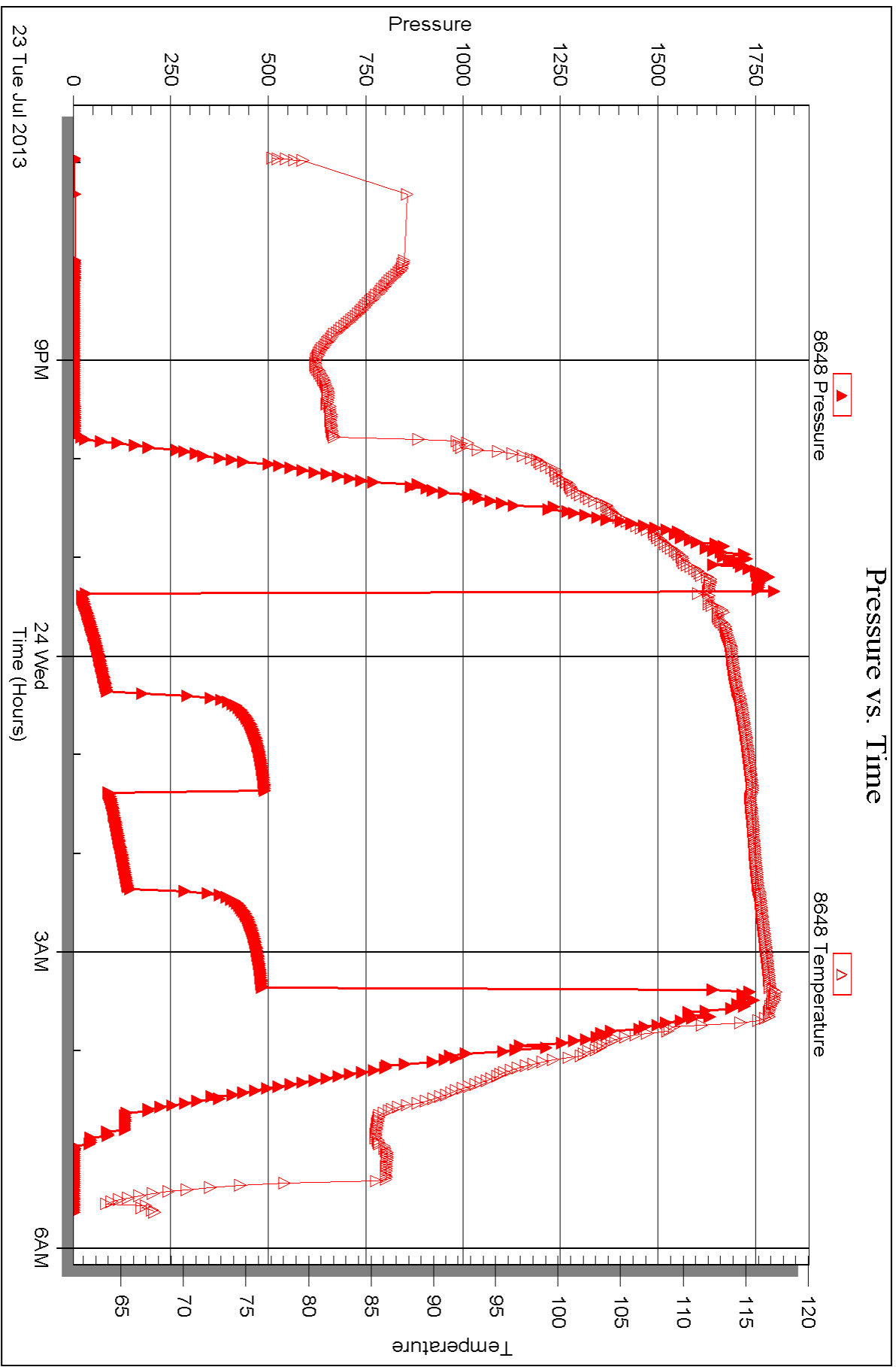
Printed: 2013.07.26 @ 10:48:02

Serial #: 8648

Outside Gore Oil Company

Lynd B#2

DST Test Number: 1





DRILL STEM TEST REPORT

Prepared For: **Gore Oil Company**

202 S. St Francis
Wichita KS 67202

ATTN: Pat Balthazor

Lynd B #2

28-11s-21w Trego KS

Start Date: 2013.07.24 @ 18:51:00

End Date: 2013.07.25 @ 01:09:00

Job Ticket #: 53936 DST #: 2

Trilobite Testing, Inc
PO Box 362 Hays, KS 67601
ph: 785-625-4778 fax: 785-625-5620

Printed: 2013.07.26 @ 10:47:11



**TRILOBITE
TESTING, INC**

DRILL STEM TEST REPORT

Gore Oil Company

28-11s-21w Trego KS

202 S. St Francis
Wichita KS 67202

Lynd B #2

Job Ticket: 53936

DST#: 2

ATTN: Pat Balthazor

Test Start: 2013.07.24 @ 18:51:00

GENERAL INFORMATION:

Formation: **LKC "H,I,J"**

Deviated: No Whipstock: ft (KB)

Time Tool Opened: 21:11:00

Time Test Ended: 01:09:00

Test Type: Conventional Bottom Hole (Reset)

Tester: Cody Bloedorn

Unit No: 53

Interval: 3718.00 ft (KB) To 3796.00 ft (KB) (TVD)

Reference Elevations: 2286.00 ft (KB)

Total Depth: 3796.00 ft (KB) (TVD)

2280.00 ft (CF)

Hole Diameter: 7.88 inches Hole Condition: Fair

KB to GR/CF: 6.00 ft

Serial #: 6799

Inside

Press @ Run Depth: 25.72 psig @ 3757.00 ft (KB)

Capacity: 8000.00 psig

Start Date: 2013.07.24

End Date:

2013.07.25

Last Calib.:

2013.07.25

Start Time: 18:51:05

End Time:

01:08:59

Time On Btm:

2013.07.24 @ 21:10:45

Time Off Btm:

2013.07.24 @ 23:12:30

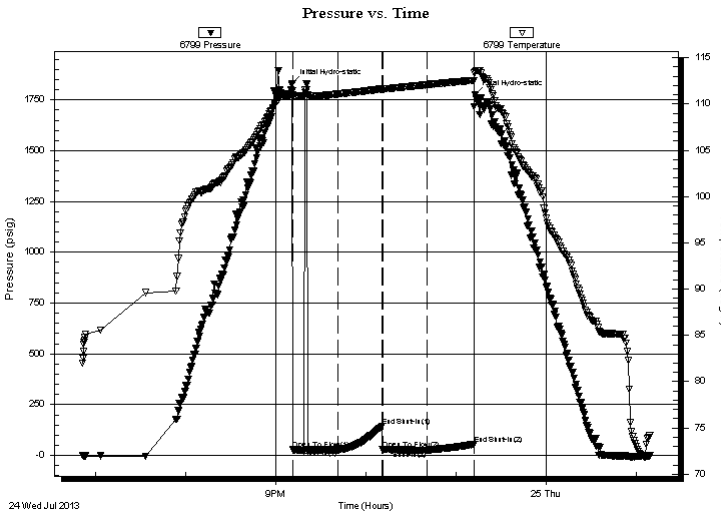
TEST COMMENT: 30 - IF- 1/4" blow , dying, flushed tool, surged and died

30 - IS- No return

30 - FF- No blow

30 - FS- No return

PRESSURE SUMMARY



Time (Min.)	Pressure (psig)	Temp (deg F)	Annotation
0	1830.18	111.47	Initial Hydro-static
1	28.17	110.95	Open To Flow (1)
31	27.64	111.07	Shut-In(1)
60	144.16	111.62	End Shut-In(1)
61	27.63	111.59	Open To Flow (2)
90	25.72	112.09	Shut-In(2)
121	54.53	112.56	End Shut-In(2)
122	1773.82	113.45	Final Hydro-static

Recovery

Length (ft)	Description	Volume (bbl)
10.00	Mud, 100%M	0.14

* Recovery from multiple tests

Gas Rates

Choke (inches)	Pressure (psig)	Gas Rate (Mcf/d)



**TRILOBITE
TESTING, INC**

DRILL STEM TEST REPORT

TOOL DIAGRAM

Gore Oil Company

28-11s-21w Trego KS

202 S. St Francis
Wichita KS 67202

Lynd B #2

Job Ticket: 53936

DST#: 2

ATTN: Pat Balthazor

Test Start: 2013.07.24 @ 18:51:00

Tool Information

Drill Pipe:	Length: 3718.00 ft	Diameter: 3.80 inches	Volume: 52.15 bbl	Tool Weight:	2000.00 lb
Heavy Wt. Pipe:	Length: 0.00 ft	Diameter: 0.00 inches	Volume: 0.00 bbl	Weight set on Packer:	30000.00 lb
Drill Collar:	Length: 0.00 ft	Diameter: 0.00 inches	Volume: 0.00 bbl	Weight to Pull Loose:	65000.00 lb
			<u>Total Volume: 52.15 bbl</u>	Tool Chased	0.00 ft
Drill Pipe Above KB:	21.00 ft			String Weight: Initial	60000.00 lb
Depth to Top Packer:	3718.00 ft			Final	60000.00 lb
Depth to Bottom Packer:	ft				
Interval between Packers:	78.00 ft				
Tool Length:	99.00 ft				
Number of Packers:	2	Diameter: 6.75 inches			
Tool Comments:					

Tool Description	Length (ft)	Serial No.	Position	Depth (ft)	Accum. Lengths
------------------	-------------	------------	----------	------------	----------------

Change Over Sub	1.00			3698.00	
Shut In Tool	5.00			3703.00	
Hydraulic tool	5.00			3708.00	
Packer	5.00			3713.00	21.00 Bottom Of Top Packer
Packer	5.00			3718.00	
Stubb	1.00			3719.00	
Perforations	5.00			3724.00	
Change Over Sub	1.00			3725.00	
Drill Pipe	31.00			3756.00	
Change Over Sub	1.00			3757.00	
Recorder	0.00	6799	Inside	3757.00	
Recorder	0.00	8648	Outside	3757.00	
Perforations	36.00			3793.00	
Bullnose	3.00			3796.00	78.00 Bottom Packers & Anchor

Total Tool Length: 99.00



**TRILOBITE
TESTING, INC**

DRILL STEM TEST REPORT

FLUID SUMMARY

Gore Oil Company

28-11s-21w Trego KS

202 S. St Francis
Wichita KS 67202

Lynd B #2

Job Ticket: 53936

DST#: 2

ATTN: Pat Balthazor

Test Start: 2013.07.24 @ 18:51:00

Mud and Cushion Information

Mud Type: Gel Chem

Cushion Type:

Oil API:

deg API

Mud Weight: 9.00 lb/gal

Cushion Length:

ft

Water Salinity:

ppm

Viscosity: 51.00 sec/qt

Cushion Volume:

bbbl

Water Loss: 8.78 in³

Gas Cushion Type:

Resistivity: ohm.m

Gas Cushion Pressure:

psig

Salinity: 2000.00 ppm

Filter Cake: inches

Recovery Information

Recovery Table

Length ft	Description	Volume bbl
10.00	Mud, 100%M	0.140

Total Length: 10.00 ft Total Volume: 0.140 bbl

Num Fluid Samples: 0

Num Gas Bombs: 0

Serial #:

Laboratory Name:

Laboratory Location:

Recovery Comments:

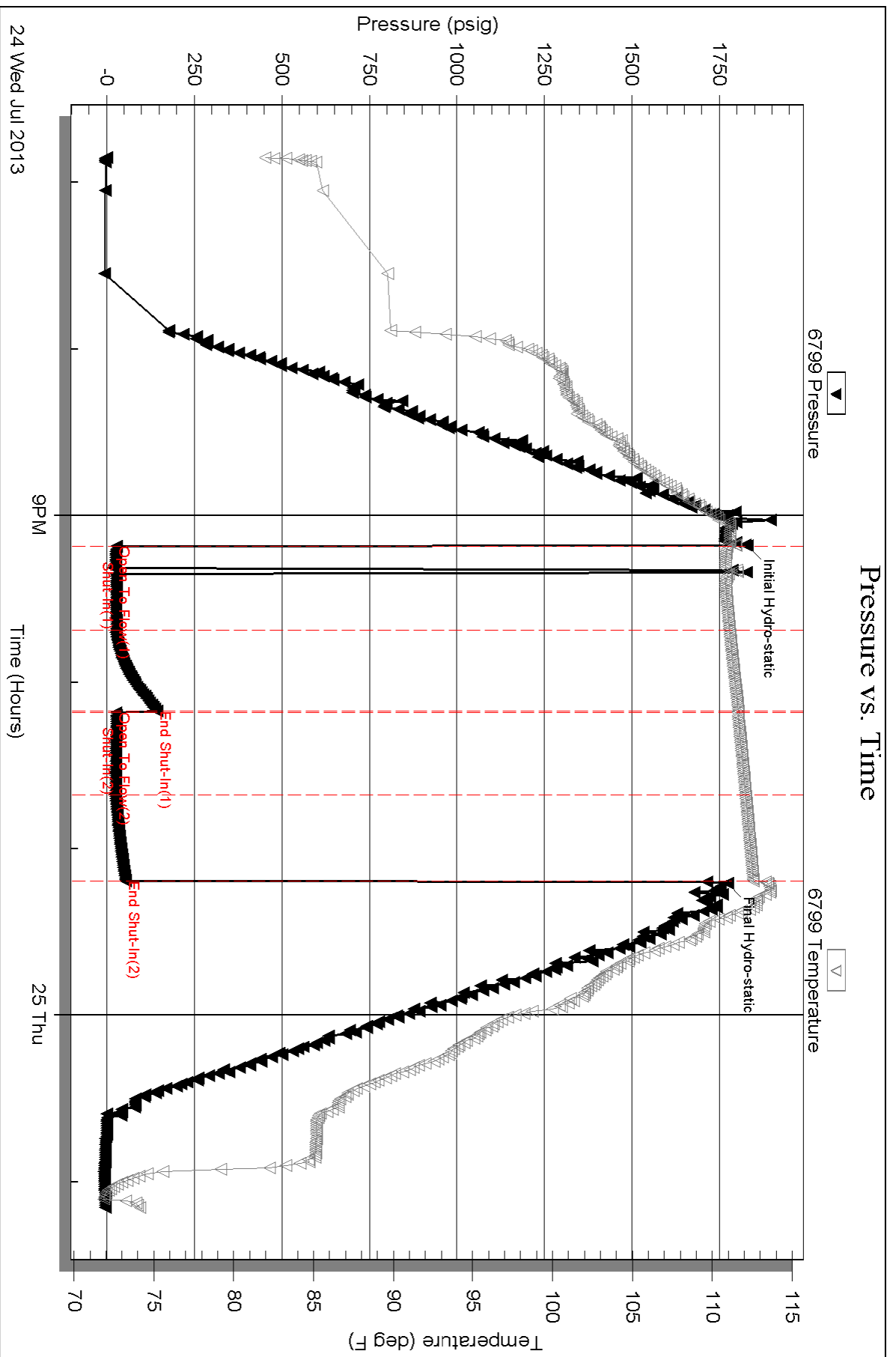
Serial #: 6799

Inside

Gore Oil Company

Lynd B#2

DST Test Number: 2



Triobite Testing, Inc

Ref. No: 53936

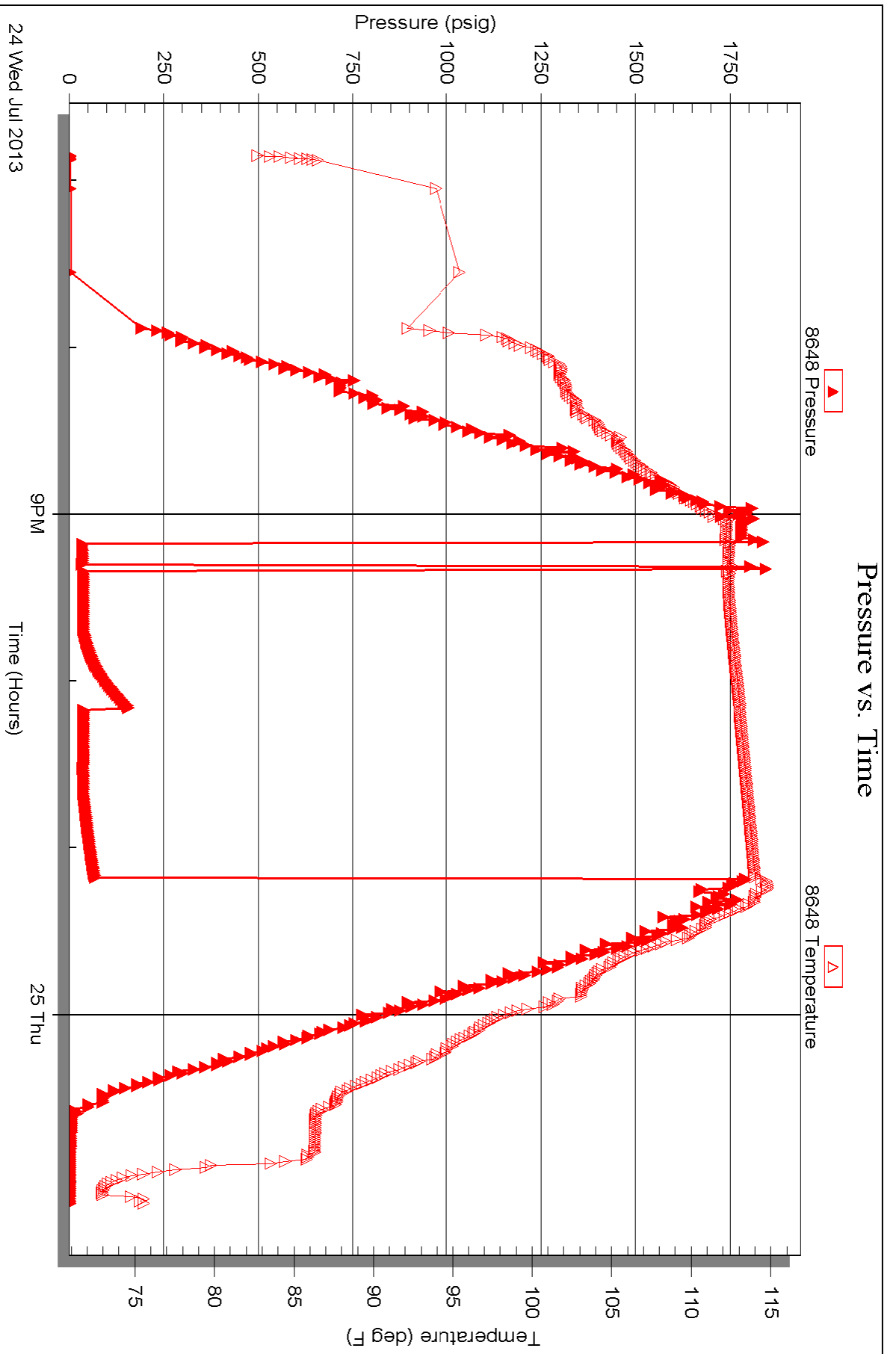
Printed: 2013.07.26 @ 10:47:13

Serial #: 8648

Outside Gore Oil Company

Lynd B#2

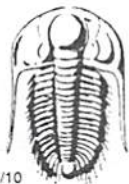
DST Test Number: 2



Triobite Testing, Inc

Ref. No: 53936

Printed: 2013.07.26 @ 10:47:14



TRILOBITE TESTING INC.

1515 Commerce Parkway • Hays, Kansas 67601

Test Ticket

NO. **53935**

4/10

Well Name & No. Lynd B # 2 Test No. 1 Date 7-23-13
 Company Gore oil Company Elevation 2280 KB 2280 GL
 Address 202 S. St Francis, Wichita KS, 67202
 Co. Rep / Geo. Pat Balthazor Rig Maverick 108
 Location: Sec. 28 Twp. 11s Rge. D1w Co. Trego State KS

Interval Tested 3682 - 3716 Zone Tested E & F
 Anchor Length 34' Drill Pipe Run 3687' Mud Wt. 9.1
 Top Packer Depth 3677 Drill Collars Run — Vis 55
 Bottom Packer Depth 3682 Wt. Pipe Run — WL 8.0
 Total Depth 3716 Chlorides 800 ppm System LCM —

Blow Description IF- 8" blow
ISI- No return
FF- 4" blow
FSI- No return

Rec	Feet of	%gas	%oil	%water	%mud
<u>260</u>	<u>MW</u>			<u>90</u>	<u>10</u>
Rec	Feet of	%gas	%oil	%water	%mud
Rec	Feet of	%gas	%oil	%water	%mud
Rec	Feet of	%gas	%oil	%water	%mud
Rec	Feet of	%gas	%oil	%water	%mud

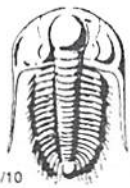
Rec Total 260' BHT 1150 Gravity — API RW 129 @ 50 °F Chlorides 34,000 ppm

(A) Initial Hydrostatic 1790 Test 1150 T-On Location 6:12 pm
 (B) First Initial Flow 16 Jars _____ T-Started 6:57 pm
 (C) First Final Flow 74 Safety Joint _____ T-Open 11:23 pm
 (D) Initial Shut-In 478 Circ Sub _____ T-Pulled 3:23 am
 (E) Second Initial Flow 63 Hourly Standby 2.5h 250 T-Out 5:41 am
 (F) Second Final Flow 126 Mileage 80 RT 124
 (G) Final Shut-In 470 Sampler _____
 (H) Final Hydrostatic 1726 Straddle _____

Initial Open 60 Ruined Shale Packer _____
 Initial Shut-In 60 Ruined Packer _____
 Final Flow 60 Extra Packer _____
 Final Shut-In 60 Extra Recorder _____
 Sub Total 0
 Total 1524
 MP/DST Disc't _____
 Sub Total 1524

Approved By _____ Our Representative Cody Bloodorn

Trilobite Testing Inc. shall not be liable for damaged of any kind of the property or personnel of the one for whom a test is made, or for any loss suffered or sustained, directly or indirectly, through the use of its equipment, or its statements or opinion concerning the results of any test, tools lost or damaged in the hole shall be paid for at cost by the party for whom the test is made.



TRILOBITE TESTING INC.

1515 Commerce Parkway • Hays, Kansas 67601

Test Ticket

NO. 53936

Well Name & No. Lynd B #2 Test No. 2 Date 7-24-13
 Company Gore oil Company Elevation 2280 KB 2286 GL
 Address 202 S. St. Francis, Wichita KS, 67202
 Co. Rep / Geo. Pat Balthazor Rig Maverick 108
 Location: Sec. 28 Twp. 11S Rge. 21W Co. Trego State KS

Interval Tested 3718 - 3796 Zone Tested LKC "H,I,J"
 Anchor Length 78' Drill Pipe Run 3817' Mud Wt. 9.2
 Top Packer Depth 3713 Drill Collars Run _____ Vis _____
 Bottom Packer Depth 3718 Wt. Pipe Run _____ WL 8.8
 Total Depth 3796 Chlorides 2,000 ppm System LCM _____

Blow Description IF - 1/4" blow & dying - Flushed tool. surged & died
ISI - No return
FF - No blow
FSI - No return

Rec	Feet of	%gas	%oil	%water	%mud
<u>10</u>	<u>Mud</u>			<u>100</u>	
Rec	Feet of	%gas	%oil	%water	%mud
Rec	Feet of	%gas	%oil	%water	%mud
Rec	Feet of	%gas	%oil	%water	%mud
Rec	Feet of	%gas	%oil	%water	%mud

Rec Total 10' BHT 112° Gravity _____ API RW _____ @ _____ °F Chlorides _____ ppm

(A) Initial Hydrostatic 1830 Test 1150 T-On Location 6:31 pm
 (B) First Initial Flow 28 Jars _____ T-Started 6:51 pm
 (C) First Final Flow 27 Safety Joint _____ T-Open 9:11 pm
 (D) Initial Shut-In 144 Circ Sub _____ T-Pulled 11:11 pm
 (E) Second Initial Flow 27 Hourly Standby _____ T-Out 1:09 am
 (F) Second Final Flow 25 Mileage 80 RT x2²⁴⁸ Comments loaded tools 7-25-13
 (G) Final Shut-In 54 Sampler _____ @ 6:25 pm
 (H) Final Hydrostatic 1773 Straddle _____ Ruined Shale Packer _____
 Shale Packer _____ Ruined Packer _____

Initial Open 30 Extra Packer _____ Extra Copies _____
 Initial Shut-In 30 Extra Recorder _____ Sub Total 0
 Final Flow 30 Day Standby _____ Total 1398
 Final Shut-In 30 Accessibility _____ MP/DST Disc't _____
 Sub Total 1398

Approved By _____ Our Representative Cody B...

Trilobite Testing Inc. shall not be liable for damaged of any kind of the property or personnel of the one for whom a test is made, or for any loss suffered or sustained, directly or indirectly, through the use of its equipment, or its statements or opinion concerning the results of any test, tools lost or damaged in the hole shall be paid for at cost by the party for whom the test is made.