



**TRILOBITE TESTING, INC.**

# DRILL STEM TEST REPORT

Imperial America Operating INC

**4-11-20-Ellis Co**

9915 W 21 st STE B  
Wichita KS 67205

**Veatcha Family Trust**

ATTN: Jeff Lawler

Job Ticket: 55844

**DST#: 2**

Test Start: 2013.12.05 @ 08:50:42

## GENERAL INFORMATION:

Formation: **LKC E&F**

Deviated: No Whipstock: ft (KB)

Time Tool Opened: 11:09:22

Time Test Ended: 16:30:32

Test Type: Conventional Bottom Hole (Reset)

Tester: Tate Lang

Unit No: 49

**Interval: 3416.00 ft (KB) To 3437.00 ft (KB) (TVD)**

Reference Elevations: 2055.00 ft (KB)

Total Depth: 3437.00 ft (KB) (TVD)

2047.00 ft (CF)

Hole Diameter: 7.88 inches Hole Condition: Good

KB to GR/CF: 8.00 ft

**Serial #: 8898**

**Outside**

Press @ Run Depth: 21.86 psig @ 3419.00 ft (KB)

Capacity: 8000.00 psig

Start Date: 2013.12.05

End Date:

2013.12.05

Last Calib.:

2013.12.05

Start Time: 08:50:43

End Time:

16:30:32

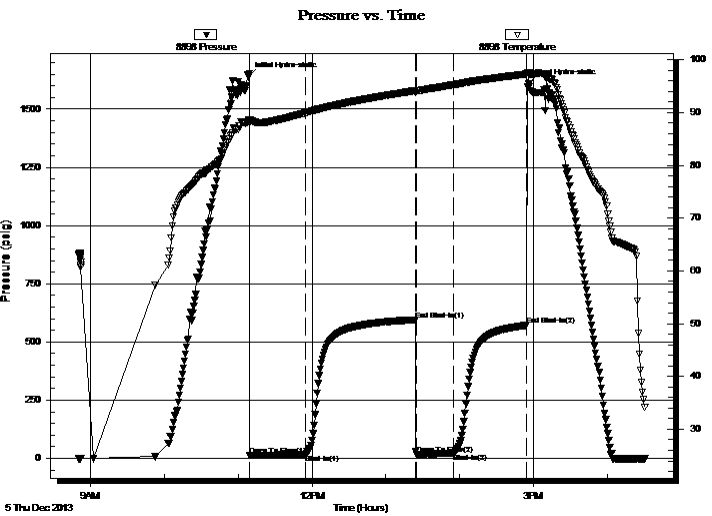
Time On Btm:

2013.12.05 @ 11:08:42

Time Off Btm:

2013.12.05 @ 14:56:02

**TEST COMMENT:** Weak surface blow built to 2 1/2 in  
Dead no blow back  
Weak surface blow built to 1/4 in  
Dead no blow back



## PRESSURE SUMMARY

Time (Min.)	Pressure (psig)	Temp (deg F)	Annotation
0	1640.56	88.68	Initial Hydro-static
1	12.26	88.01	Open To Flow (1)
46	17.18	89.96	Shut-In(1)
136	595.64	94.17	End Shut-In(1)
136	18.40	94.09	Open To Flow (2)
166	21.86	95.27	Shut-In(2)
226	571.82	97.30	End Shut-In(2)
228	1611.11	97.48	Final Hydro-static

## Recovery

Length (ft)	Description	Volume (bbl)
10.00	Mw with oil spots	0.05

\* Recovery from multiple tests

## Gas Rates

	Choke (inches)	Pressure (psig)	Gas Rate (Mcf/d)



**TRILOBITE  
TESTING, INC.**

# DRILL STEM TEST REPORT

**FLUID SUMMARY**

Imperial America Operating INC

**4-11-20-Ellis Co**

9915 W 21 st STE B  
Wichita KS 67205

**Veatcha Family Trust**

Job Ticket: 55844

**DST#: 2**

ATTN: Jeff Lawler

Test Start: 2013.12.05 @ 08:50:42

## Mud and Cushion Information

Mud Type: Gel Chem

Cushion Type:

Oil API:

deg API

Mud Weight: 8.00 lb/gal

Cushion Length:

ft

Water Salinity:

ppm

Viscosity: 50.00 sec/qt

Cushion Volume:

bbbl

Water Loss: 7.98 in<sup>3</sup>

Gas Cushion Type:

Resistivity: ohm.m

Gas Cushion Pressure:

psig

Salinity: 500.00 ppm

Filter Cake: inches

## Recovery Information

Recovery Table

Length ft	Description	Volume bbl
10.00	M with oil spots	0.049

Total Length: 10.00 ft      Total Volume: 0.049 bbl

Num Fluid Samples: 0

Num Gas Bombs: 0

Serial #:

Laboratory Name:

Laboratory Location:

Recovery Comments:

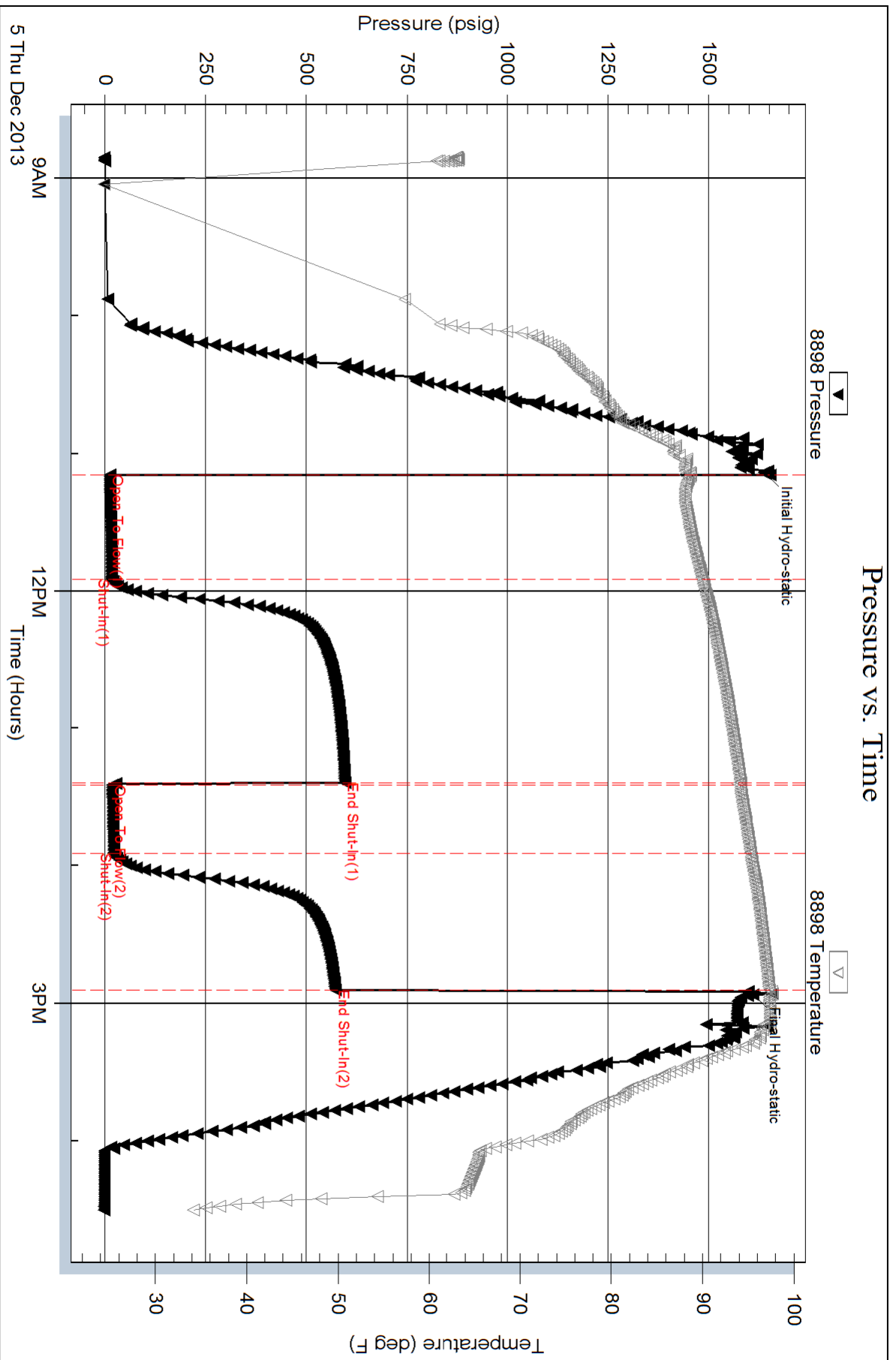
Serial #: 8898

Outside Imperial America Operating INC

Veatcha Family Trust

DST Test Number: 2

### Pressure vs. Time



Trilobite Testing, Inc

Ref. No: 55844

Printed: 2013.12.05 @ 16:51:01