



TRILOBITE TESTING, INC.

DRILL STEM TEST REPORT

Imperial America Operating INC

4-11-20-Ellis Co

9915 W 21 st STE B
Wichita KS 67205

Veatch Family Trust

ATTN: Jeff Lawler

Job Ticket: 55843

DST#: 1

Test Start: 2013.12.04 @ 19:57:56

GENERAL INFORMATION:

Formation: **LKC C&D**

Deviated: No Whipstock: ft (KB)

Time Tool Opened: 21:59:06

Time Test Ended: 01:25:56

Test Type: Conventional Bottom Hole (Initial)

Tester: Tate Lang

Unit No: 49

Interval: 3375.00 ft (KB) To 3420.00 ft (KB) (TVD)

Reference Elevations: 2055.00 ft (KB)

Total Depth: 3420.00 ft (KB) (TVD)

2047.00 ft (CF)

Hole Diameter: 7.88 inches Hole Condition: Good

KB to GR/CF: 8.00 ft

Serial #: 8898 Outside

Press @ Run Depth: 35.76 psig @ 3384.00 ft (KB)

Capacity: 8000.00 psig

Start Date: 2013.12.04

End Date: 2013.12.05

Last Calib.: 2013.12.05

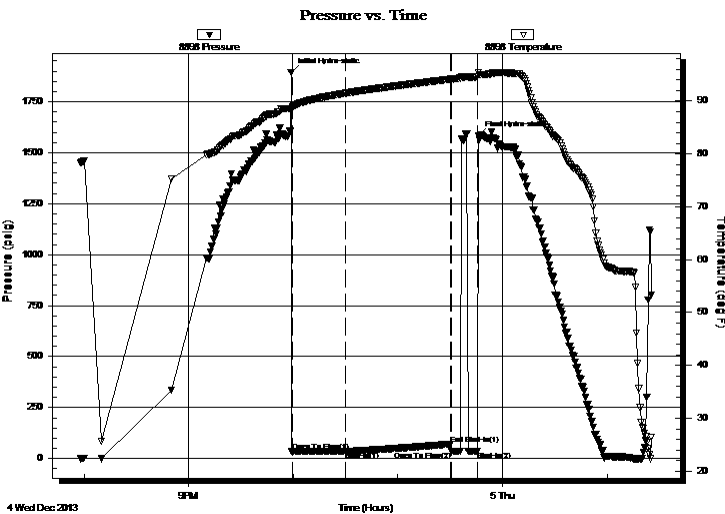
Start Time: 19:57:57

End Time: 01:25:56

Time On Btm: 2013.12.04 @ 21:58:36

Time Off Btm: 2013.12.04 @ 23:46:16

TEST COMMENT: Slid 10 ft weak surface blow started at 1 1/4 in and stayed
Dead no blow back
Dead no blow flushed tool surge blow then died
Pulled it



PRESSURE SUMMARY

Time (Min.)	Pressure (psig)	Temp (deg F)	Annotation
0	1893.46	88.63	Initial Hydro-static
1	35.13	88.48	Open To Flow (1)
32	35.76	91.47	Shut-In(1)
92	70.98	94.13	End Shut-In(1)
93	35.31	94.12	Open To Flow (2)
107	36.29	94.62	Shut-In(2)
108	1581.34	95.41	Final Hydro-static

Recovery

Length (ft)	Description	Volume (bbl)
15.00	Mud with oil spots	0.07

Gas Rates

Choke (inches)	Pressure (psig)	Gas Rate (Mcf/d)



**TRILOBITE
TESTING, INC.**

DRILL STEM TEST REPORT

FLUID SUMMARY

Imperial America Operating INC

4-11-20-Ellis Co

9915 W 21 st STE B
Wichita KS 67205

Veatch Family Trust

Job Ticket: 55843

DST#: 1

ATTN: Jeff Lawler

Test Start: 2013.12.04 @ 19:57:56

Mud and Cushion Information

Mud Type: Gel Chem

Cushion Type:

Oil API:

deg API

Mud Weight: 8.00 lb/gal

Cushion Length:

ft

Water Salinity:

ppm

Viscosity: 50.00 sec/qt

Cushion Volume:

bbbl

Water Loss: 7.99 in³

Gas Cushion Type:

Resistivity: ohm.m

Gas Cushion Pressure:

psig

Salinity: 500.00 ppm

Filter Cake: inches

Recovery Information

Recovery Table

Length ft	Description	Volume bbbl
15.00	Mud with oil spots	0.074

Total Length: 15.00 ft Total Volume: 0.074 bbl

Num Fluid Samples: 0

Num Gas Bombs: 0

Serial #:

Laboratory Name:

Laboratory Location:

Recovery Comments:

Pressure vs. Time

