

**TRILOBITE TESTING, INC.**

# DRILL STEM TEST REPORT

Imperial America Operating INC

4-11-20-Ellis Co

9915 W 21 st STE B  
Wichita KS 67205

**Veatcha Family Trust**

ATTN: Jeff Lawler

Job Ticket: 55846

**DST#: 4**

Test Start: 2013.12.06 @ 22:10:17

## GENERAL INFORMATION:

Formation: **Conglomerate-Arbuck**

Deviated: No Whipstock: ft (KB)

Time Tool Opened: 00:15:07

Time Test Ended: 05:05:37

Test Type: Conventional Bottom Hole (Reset)

Tester: Tate Lang

Unit No: 49

**Interval: 3579.00 ft (KB) To 3660.00 ft (KB) (TVD)**

Reference Elevations: 2055.00 ft (KB)

Total Depth: 3660.00 ft (KB) (TVD)

2047.00 ft (CF)

Hole Diameter: 7.88 inches Hole Condition: Good

KB to GR/CF: 8.00 ft

**Serial #: 8898 Outside**

Press @ Run Depth: 66.76 psig @ 3592.00 ft (KB)

Capacity: 8000.00 psig

Start Date: 2013.12.06

End Date:

2013.12.07

Last Calib.: 2013.12.07

Start Time: 22:10:18

End Time:

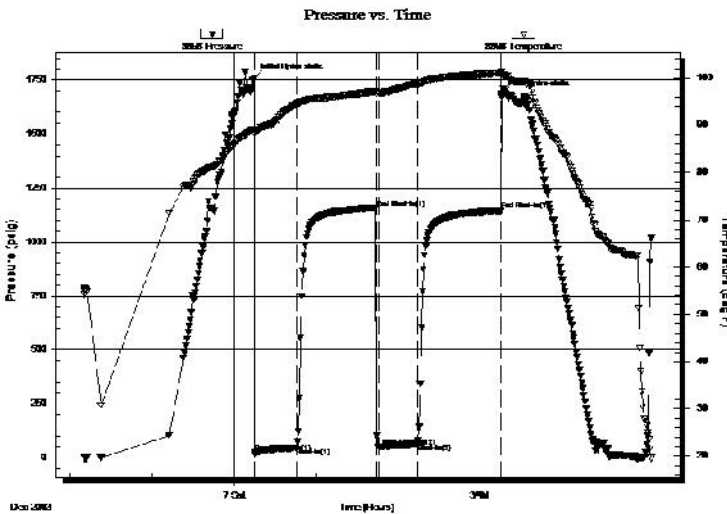
05:05:37

Time On Btm: 2013.12.07 @ 00:14:57

Time Off Btm: 2013.12.07 @ 03:15:56

**TEST COMMENT:** Fair surface blow built to 6 1/2 in  
Dead no blow back  
Good surface blow built to 9 in  
Dead no blow back

## PRESSURE SUMMARY



Time (Min.)	Pressure (psig)	Temp (deg F)	Annotation
0	1760.84	89.12	Initial Hydro-static
1	22.40	88.32	Open To Flow (1)
31	48.12	94.50	Shut-In(1)
90	1157.36	97.18	End Shut-In(1)
91	51.38	96.90	Open To Flow (2)
120	66.76	98.76	Shut-In(2)
181	1145.57	101.17	End Shut-In(2)
181	1683.12	101.34	Final Hydro-static

## Recovery

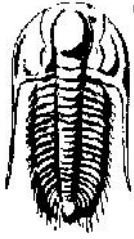
Length (ft)	Description	Volume (bbl)
62.00	5%G 5%O 90%M	0.60
62.00	10%G 45%O 45%M	0.87
20.00	60%G 40%O	0.28
0.00	100 GIP	0.00

## Gas Rates

	Choke (inches)	Pressure (psig)	Gas Rate (Mcf/d)

\* Recovery from multiple tests





**TRILOBITE  
TESTING, INC.**

# DRILL STEM TEST REPORT

**FLUID SUMMARY**

Imperial America Operating INC

**4-11-20-Ellis Co**

9915 W 21 st STE B  
Wichita KS 67205

**Veatcha Family Trust**

Job Ticket: 55846

**DST#: 4**

ATTN: Jeff Lawler

Test Start: 2013.12.06 @ 22:10:17

## Mud and Cushion Information

Mud Type: Gel Chem

Cushion Type:

Oil API:

deg API

Mud Weight: 9.00 lb/gal

Cushion Length:

ft

Water Salinity:

ppm

Viscosity: 50.00 sec/qt

Cushion Volume:

bbl

Water Loss: 7.19 in<sup>3</sup>

Gas Cushion Type:

Resistivity: ohm.m

Gas Cushion Pressure:

psig

Salinity: 5000.00 ppm

Filter Cake: 1.00 inches

## Recovery Information

Recovery Table

Length ft	Description	Volume bbl
62.00	5%G 5%O 90%M	0.596
62.00	10%G 45%O 45%M	0.870
20.00	60%G 40%O	0.281
0.00	100 GIP	0.000

Total Length: 144.00 ft

Total Volume: 1.747 bbl

Num Fluid Samples: 0

Num Gas Bombs: 0

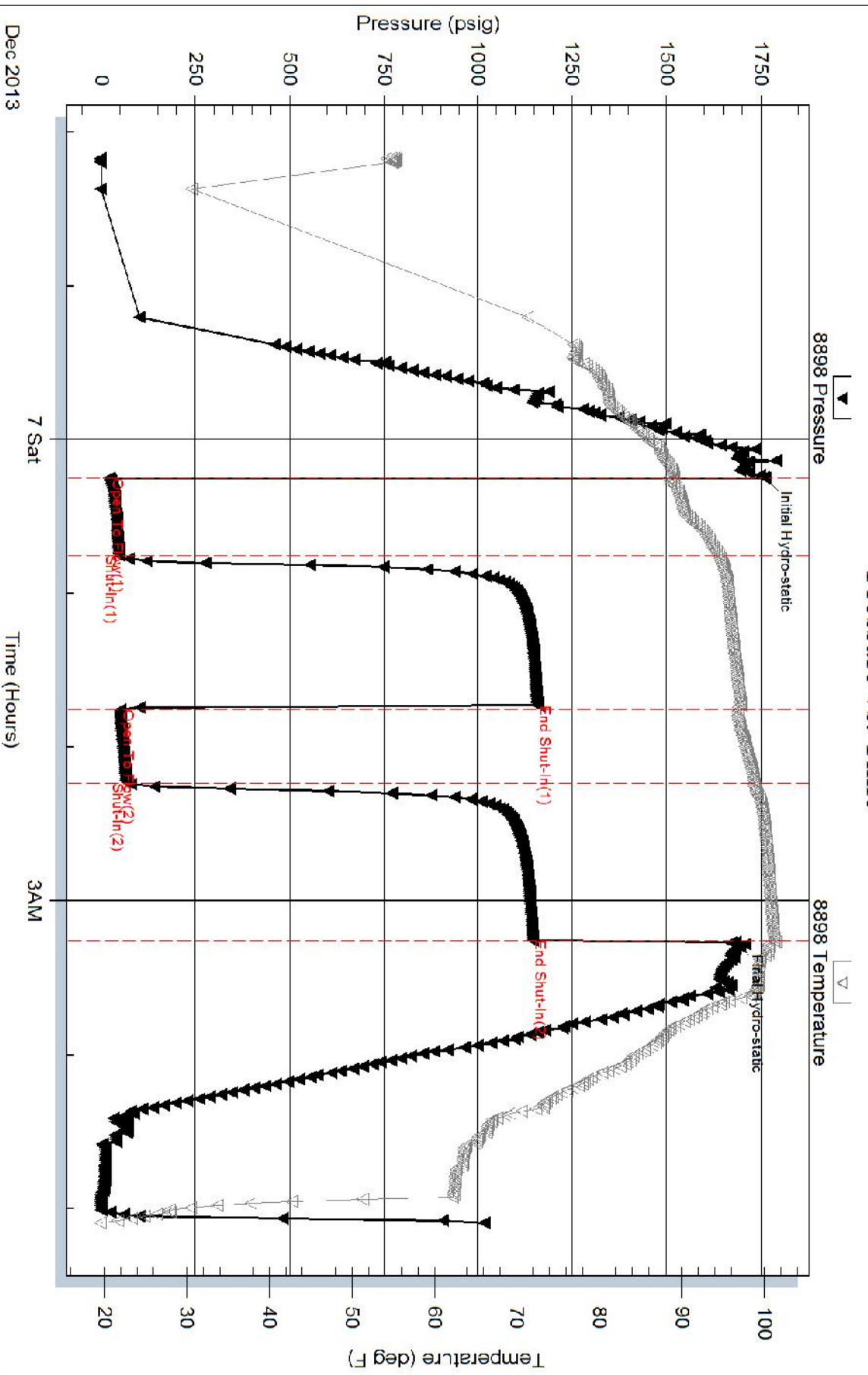
Serial #:

Laboratory Name:

Laboratory Location:

Recovery Comments:

### Pressure vs. Time



Serial #: 8897

Inside

Imperial America Operating INC

Veatcha Family Trust

DST Test Number: 4

