



DRILL STEM TEST REPORT

Prepared For: **Prospect Oil & Gas**

PO Box 837
Russell KS. 676656

ATTN: Brad Hutchinson

Froelich "D" #2

22-12s-16w Ellis,KS

Start Date: 2013.11.18 @ 22:15:00

End Date: 2013.11.19 @ 04:41:20

Job Ticket #: 55861 DST #: 1

Trilobite Testing, Inc
PO Box 362 Hays, KS 67601
ph: 785-625-4778 fax: 785-625-5620

Printed: 2013.11.22 @ 10:38:56



**TRILOBITE
TESTING, INC**

DRILL STEM TEST REPORT

Prospect Oil & Gas

22-12s-16w Ellis,KS

PO Box 837
Russell KS. 676656

Froelich "D" #2

Job Ticket: 55861

DST#: 1

ATTN: Brad Hutchinson

Test Start: 2013.11.18 @ 22:15:00

GENERAL INFORMATION:

Formation:

Deviated: No Whipstock: ft (KB)

Time Tool Opened: 00:08:15

Time Test Ended: 04:41:20

Test Type: Conventional Bottom Hole (Initial)

Tester: Bob Hamel

Unit No: 44

Interval: 3180.00 ft (KB) To 3295.00 ft (KB) (TVD)

Reference Elevations: 2035.00 ft (KB)

Total Depth: 3295.00 ft (KB) (TVD)

2030.00 ft (CF)

Hole Diameter: 7.88 inches Hole Condition: Good

KB to GR/CF: 5.00 ft

Serial #: 6669

Inside

Press@RunDepth: 102.83 psig @ 3279.00 ft (KB)

Capacity: 8000.00 psig

Start Date: 2013.11.18

End Date:

2013.11.19

Last Calib.:

2013.11.19

Start Time: 22:15:05

End Time:

04:41:29

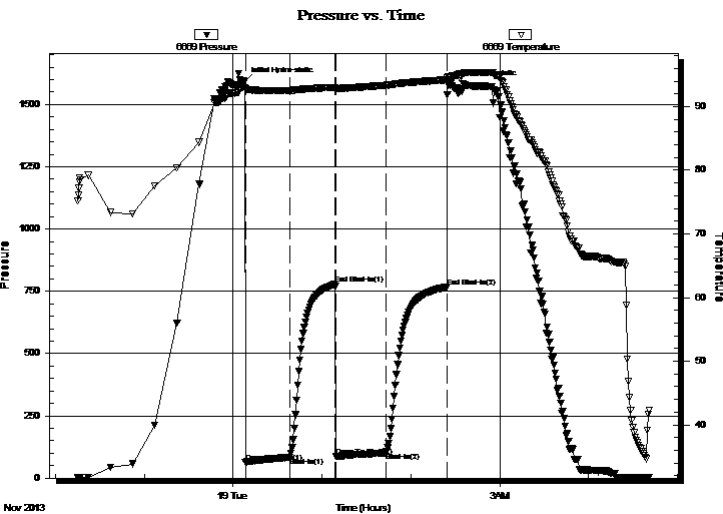
Time On Btm:

2013.11.19 @ 00:07:45

Time Off Btm:

2013.11.19 @ 02:25:30

TEST COMMENT: I.F. - 30 - Weak surface blow built to 1/4 "
I.S.I. - 30 - No blow back
F.F. - 30 - Weak surface blow died in 8 min
F.S.I. - 30 - No blow back



PRESSURE SUMMARY

Time (Min.)	Pressure (psig)	Temp (deg F)	Annotation
0	1593.29	93.03	Initial Hydro-static
1	64.10	92.76	Open To Flow (1)
31	83.98	92.50	Shut-In(1)
61	778.42	93.04	End Shut-In(1)
62	86.81	92.88	Open To Flow (2)
96	102.83	93.33	Shut-In(2)
137	767.20	94.21	End Shut-In(2)
138	1578.19	94.63	Final Hydro-static

Recovery

Length (ft)	Description	Volume (bbl)
70.00	Mud	0.51

Gas Rates

	Choke (inches)	Pressure (psig)	Gas Rate (Mcf/d)



**TRILOBITE
TESTING, INC**

DRILL STEM TEST REPORT

TOOL DIAGRAM

Prospect Oil & Gas

22-12s-16w Ellis,KS

PO Box 837
Russell KS. 676656

Froelich "D" #2

Job Ticket: 55861

DST#: 1

ATTN: Brad Hutchinson

Test Start: 2013.11.18 @ 22:15:00

Tool Information

Drill Pipe:	Length: 2710.00 ft	Diameter: 3.80 inches	Volume: 38.01 bbl	Tool Weight:	2200.00 lb
Heavy Wt. Pipe:	Length: 469.00 ft	Diameter: 2.75 inches	Volume: 3.45 bbl	Weight set on Packer:	25000.00 lb
Drill Collar:	Length: 0.00 ft	Diameter: 2.25 inches	Volume: 0.00 bbl	Weight to Pull Loose:	45000.00 lb
			<u>Total Volume: 41.46 bbl</u>	Tool Chased	2.00 ft
Drill Pipe Above KB:	18.00 ft			String Weight: Initial	42000.00 lb
Depth to Top Packer:	3180.00 ft			Final	42000.00 lb
Depth to Bottom Packer:	ft				
Interval between Packers:	115.00 ft				
Tool Length:	134.00 ft				
Number of Packers:	2	Diameter: 6.75 inches			

Tool Comments:

Tool Description	Length (ft)	Serial No.	Position	Depth (ft)	Accum. Lengths
------------------	-------------	------------	----------	------------	----------------

Shut In Tool	5.00			3166.00	
Hydraulic tool	5.00			3171.00	
Packer	5.00			3176.00	19.00 Bottom Of Top Packer
Packer	4.00			3180.00	
Stubb	1.00			3181.00	
Perforations	4.00			3185.00	
Change Over Sub	1.00			3186.00	
Drill Pipe	92.00			3278.00	
Change Over Sub	1.00			3279.00	
Recorder	0.00	6669	Inside	3279.00	
Recorder	0.00	8875	Outside	3279.00	
Perforations	13.00			3292.00	
Bullnose	3.00			3295.00	115.00 Bottom Packers & Anchor

Total Tool Length: 134.00



**TRILOBITE
TESTING, INC**

DRILL STEM TEST REPORT

FLUID SUMMARY

Prospect Oil & Gas

22-12s-16w Ellis,KS

PO Box 837
Russell KS. 676656

Froelich "D" #2

Job Ticket: 55861

DST#: 1

ATTN: Brad Hutchinson

Test Start: 2013.11.18 @ 22:15:00

Mud and Cushion Information

Mud Type: Gel Chem

Cushion Type:

Oil API:

deg API

Mud Weight: 9.00 lb/gal

Cushion Length:

ft

Water Salinity:

ppm

Viscosity: 51.00 sec/qt

Cushion Volume:

bbbl

Water Loss: 7.17 in³

Gas Cushion Type:

Resistivity: ohm.m

Gas Cushion Pressure:

psig

Salinity: 3400.00 ppm

Filter Cake: inches

Recovery Information

Recovery Table

Length ft	Description	Volume bbl
70.00	Mud	0.514

Total Length: 70.00 ft Total Volume: 0.344 bbl

Num Fluid Samples: 0

Num Gas Bombs: 0

Serial #:

Laboratory Name:

Laboratory Location:

Recovery Comments:

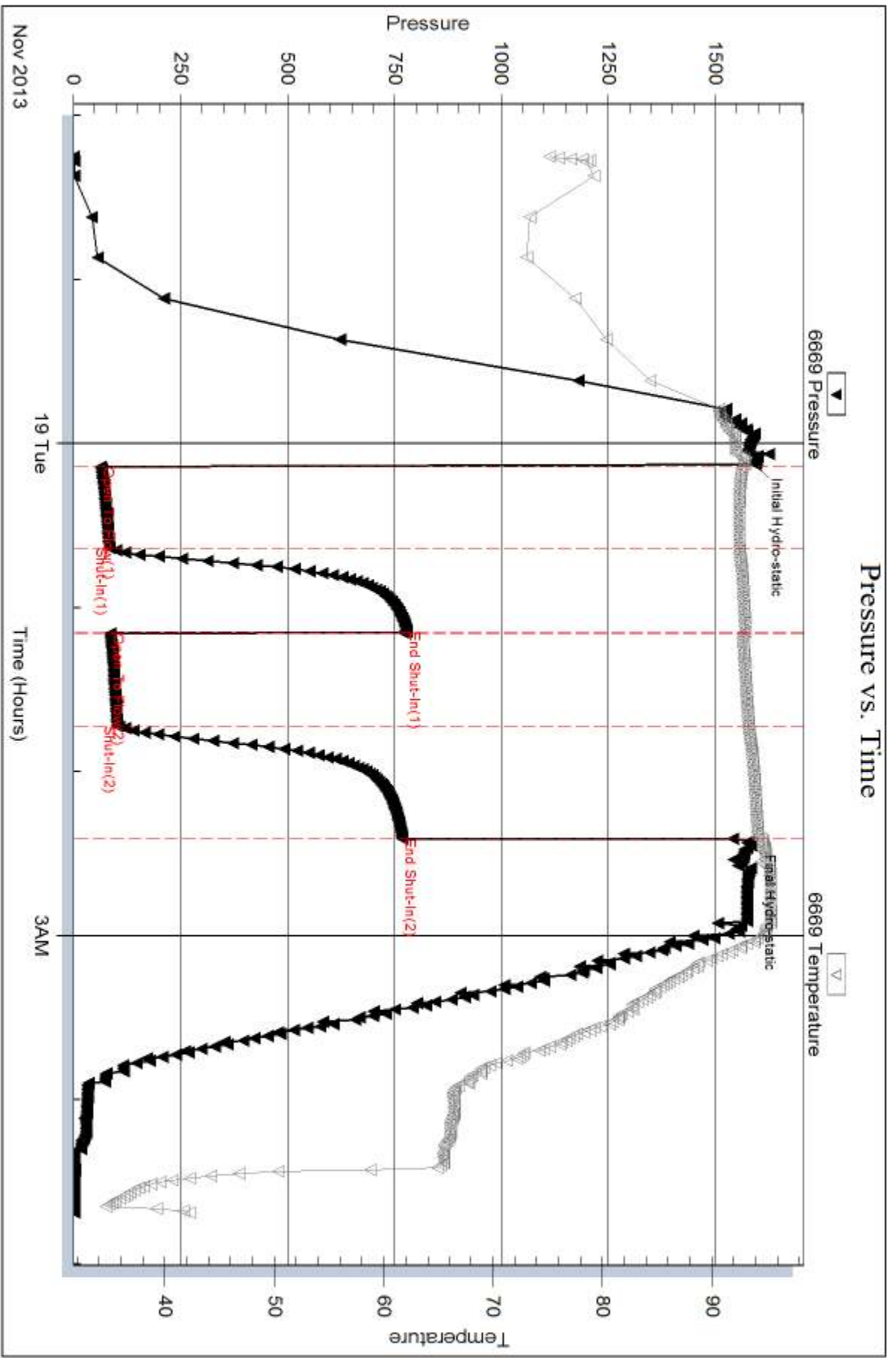
Serial #: 6669

Inside

Prospect Oil & Gas

Froelich "D" #2

DST Test Number: 1



Tribble Testing, Inc

Ref. No: 55861

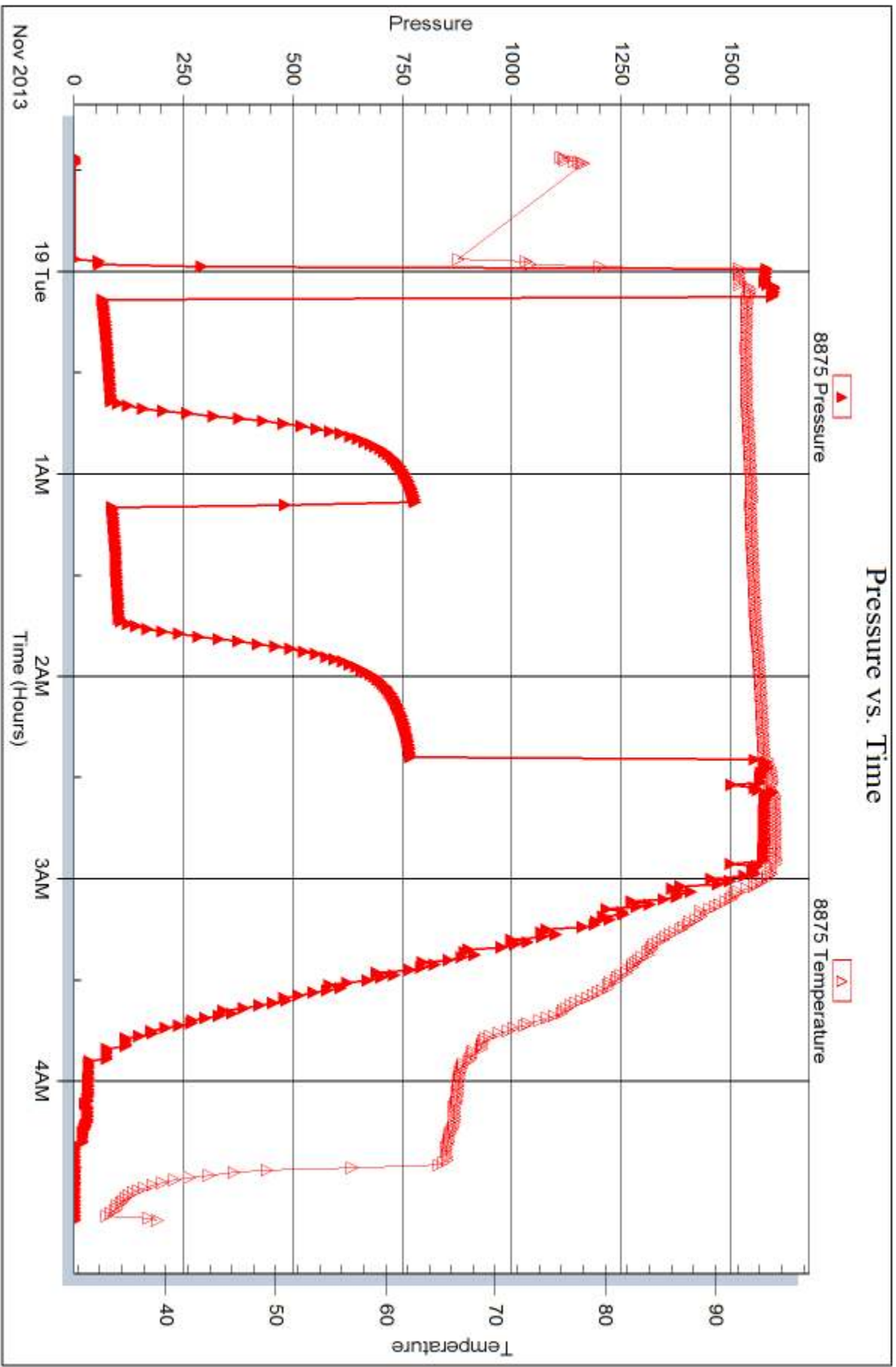
Printed: 2013.11.22 @ 10:38:58

Serial #: 8875

Outside Prospect Oil & Gas

Froelich "D" #2

DST Test Number: 1





DRILL STEM TEST REPORT

Prepared For: **Prospect Oil & Gas**

PO Box 837
Russell KS. 676656

ATTN: Brad Hutchinson

Froelich "D" #2

22-12s-16w Ellis,KS

Start Date: 2013.11.18 @ 15:36:05

End Date: 2013.11.18 @ 22:35:58

Job Ticket #: 55862 DST #: 2

Trilobite Testing, Inc
PO Box 362 Hays, KS 67601
ph: 785-625-4778 fax: 785-625-5620

Printed: 2013.11.22 @ 10:37:40



**TRILOBITE
TESTING, INC**

DRILL STEM TEST REPORT

Prospect Oil & Gas

22-12s-16w Ellis,KS

PO Box 837
Russell KS. 676656

Froelich "D" #2

Job Ticket: 55862

DST#: 2

ATTN: Brad Hutchinson

Test Start: 2013.11.18 @ 15:36:05

GENERAL INFORMATION:

Formation: **LKC. "E-G"**

Deviated: No Whipstock: ft (KB)

Time Tool Opened: 17:11:13

Time Test Ended: 22:35:58

Test Type: Conventional Bottom Hole (Reset)

Tester: Bob Hamel

Unit No: 44

Interval: 3295.00 ft (KB) To 3342.00 ft (KB) (TVD)

Reference Elevations: 2035.00 ft (KB)

Total Depth: 3295.00 ft (KB) (TVD)

2030.00 ft (CF)

Hole Diameter: 7.88 inches Hole Condition: Good

KB to GR/CF: 5.00 ft

Serial #: 6669

Inside

Press@RunDepth: 199.71 psig @ 3334.00 ft (KB)

Capacity: 8000.00 psig

Start Date: 2013.11.18

End Date:

2013.11.18

Last Calib.:

2013.11.18

Start Time:

15:36:05

End Time:

22:35:58

Time On Btm:

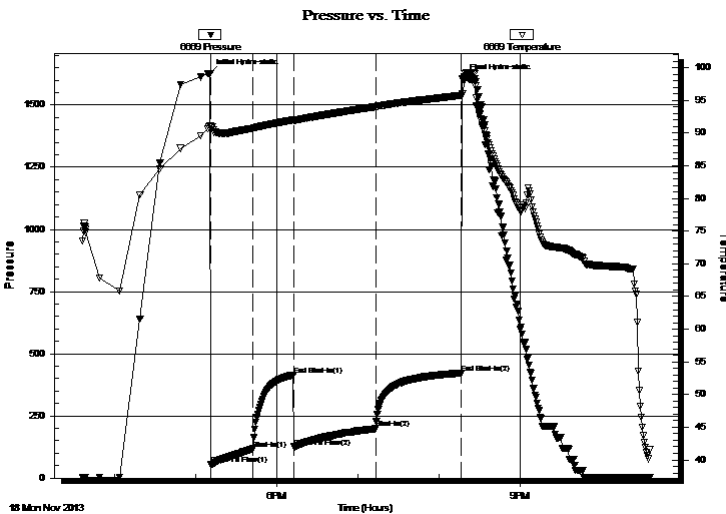
2013.11.18 @ 17:10:28

Time Off Btm:

2013.11.18 @ 20:17:43

TEST COMMENT: I.F. - 30 - BOB in 2 1/2 min
I.S.I - 30 - Weak surface blow back built to 3 1/2"
F.F - 60 - BOB in 10 min
F.S.I. - 60 - Weak surface blow back built to 5 1/2"

PRESSURE SUMMARY



Time (Min.)	Pressure (psig)	Temp (deg F)	Annotation
0	1625.55	91.10	Initial Hydro-static
1	55.43	90.89	Open To Flow (1)
32	117.10	90.73	Shut-In(1)
62	414.65	92.02	End Shut-In(1)
63	125.64	91.96	Open To Flow (2)
123	199.71	94.04	Shut-In(2)
186	422.44	95.75	End Shut-In(2)
188	1604.73	96.02	Final Hydro-static

Recovery

Length (ft)	Description	Volume (bbl)
126.00	SOSMW 5%MUD 95%WATER (FEW OIL) 0.93CS)	
461.00	SMCHGO 5%MUD 40%GAS 55%OIL	4.82
0.00	378 GIP 100% GAS	0.00

Gas Rates

	Choke (inches)	Pressure (psig)	Gas Rate (Mcf/d)

* Recovery from multiple tests



**TRILOBITE
TESTING, INC**

DRILL STEM TEST REPORT

TOOL DIAGRAM

Prospect Oil & Gas

22-12s-16w Ellis,KS

PO Box 837
Russell KS. 676656

Froelich "D" #2

Job Ticket: 55862

DST#: 2

ATTN: Brad Hutchinson

Test Start: 2013.11.18 @ 15:36:05

Tool Information

Drill Pipe:	Length: 2920.00 ft	Diameter: 3.80 inches	Volume: 40.96 bbl	Tool Weight: 2200.00 lb
Heavy Wt. Pipe:	Length: 373.00 ft	Diameter: 2.75 inches	Volume: 2.74 bbl	Weight set on Packer: 25000.00 lb
Drill Collar:	Length: 0.00 ft	Diameter: 2.25 inches	Volume: 0.00 bbl	Weight to Pull Loose: 50000.00 lb
			<u>Total Volume: 43.70 bbl</u>	Tool Chased 3.00 ft
Drill Pipe Above KB:	17.00 ft			String Weight: Initial 42000.00 lb
Depth to Top Packer:	3295.00 ft			Final 42000.00 lb
Depth to Bottom Packer:	ft			
Interval between Packers:	47.00 ft			
Tool Length:	66.00 ft			
Number of Packers:	2	Diameter: 6.75 inches		

Tool Comments: "WEIGHT INDICATOR NOT WORKING PROPERLY"

Tool Description	Length (ft)	Serial No.	Position	Depth (ft)	Accum. Lengths
------------------	-------------	------------	----------	------------	----------------

Shut In Tool	5.00			3281.00	
Hydraulic tool	5.00			3286.00	
Packer	5.00			3291.00	19.00 Bottom Of Top Packer
Packer	4.00			3295.00	
Stubb	1.00			3296.00	
Perforations	4.00			3300.00	
Change Over Sub	1.00			3301.00	
Drill Pipe	32.00			3333.00	
Change Over Sub	1.00			3334.00	
Recorder	0.00	6669	Inside	3334.00	
Recorder	0.00	8875	Outside	3334.00	
Perforations	5.00			3339.00	
Bullnose	3.00			3342.00	47.00 Bottom Packers & Anchor

Total Tool Length: 66.00



**TRILOBITE
TESTING, INC**

DRILL STEM TEST REPORT

FLUID SUMMARY

Prospect Oil & Gas

22-12s-16w Ellis,KS

PO Box 837
Russell KS. 676656

Froelich "D" #2

Job Ticket: 55862

DST#: 2

ATTN: Brad Hutchinson

Test Start: 2013.11.18 @ 15:36:05

Mud and Cushion Information

Mud Type: Gel Chem
Mud Weight: 9.00 lb/gal
Viscosity: 50.00 sec/qt
Water Loss: 5.77 in³
Resistivity: ohm.m
Salinity: 4800.00 ppm
Filter Cake: 1.00 inches

Cushion Type:
Cushion Length: ft
Cushion Volume: bbl
Gas Cushion Type:
Gas Cushion Pressure: psig

Oil API: deg API
Water Salinity: 35000 ppm

Recovery Information

Recovery Table

Length ft	Description	Volume bbl
126.00	SOSMW 5%MUD 95%WATER (FEW OIL SPE	0.926
461.00	SMCHGO 5%MUD 40%GAS 55%OIL	4.816
0.00	378 GIP 100% GAS	0.000

Total Length: 587.00 ft Total Volume: 5.742 bbl

Num Fluid Samples: 0

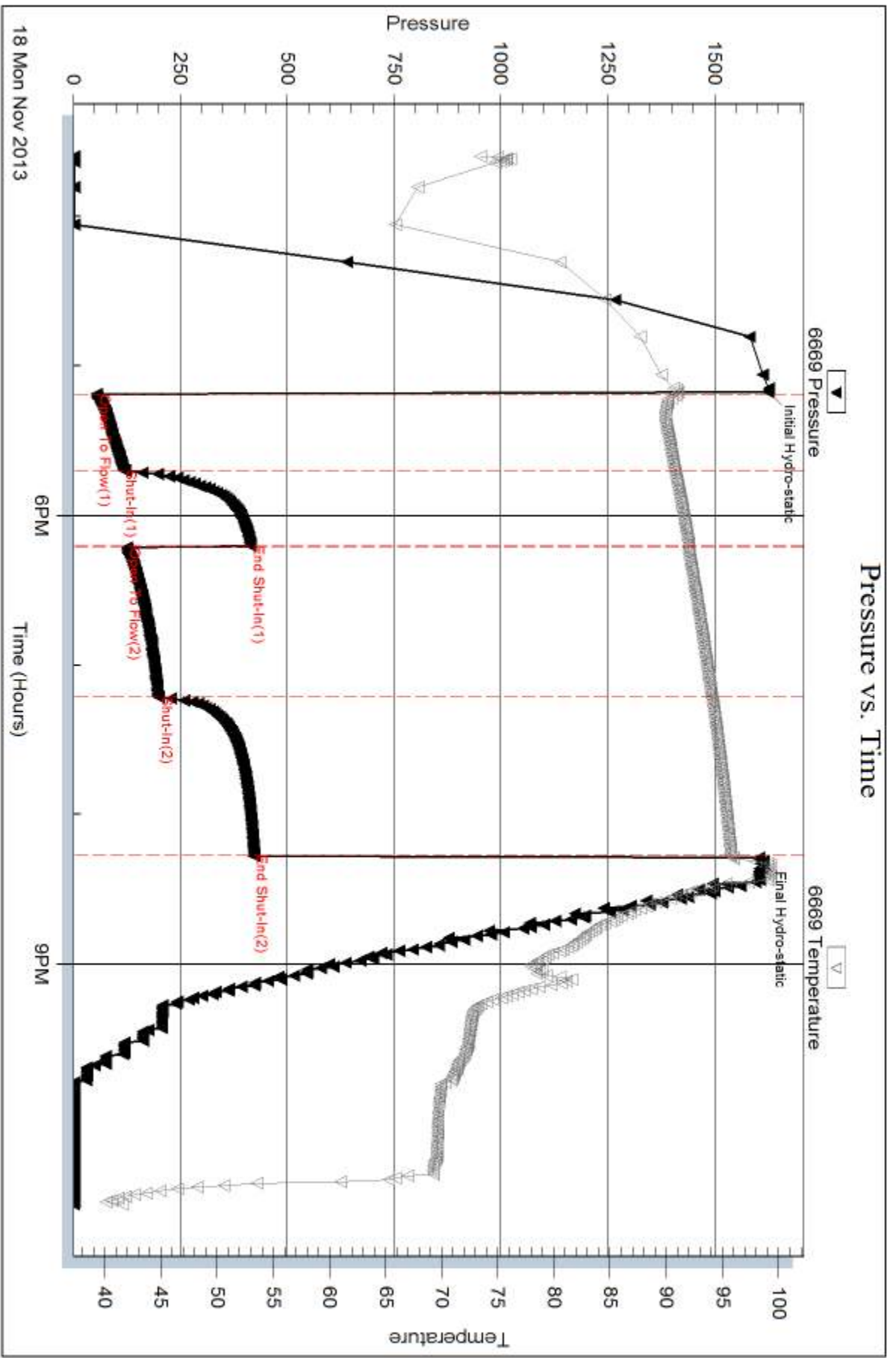
Num Gas Bombs: 0

Serial #:

Laboratory Name:

Laboratory Location:

Recovery Comments: R.W. = .51@ 45 F

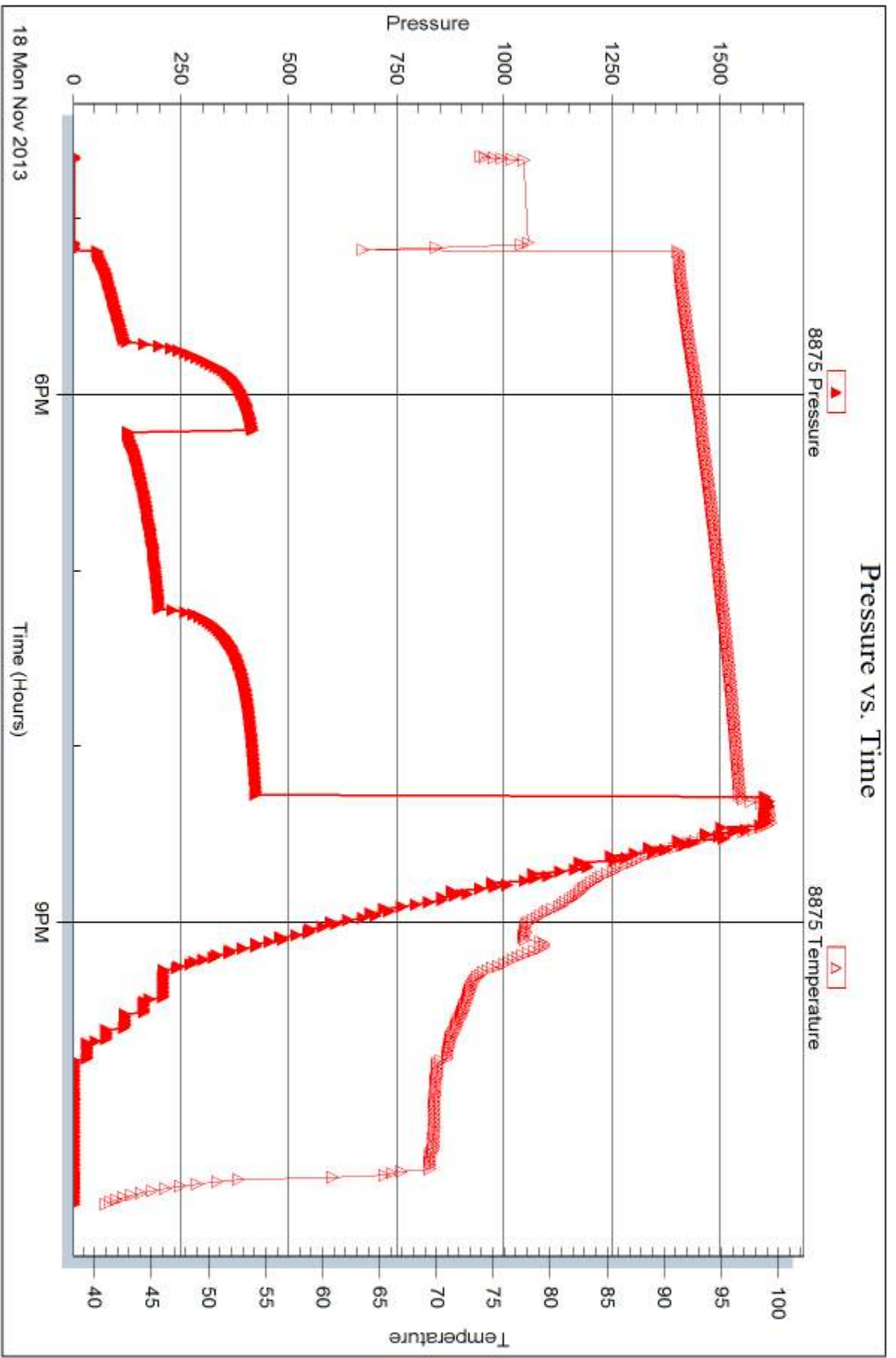


Serial #: 8875

Outside Prospect Oil & Gas

Froelich "D" #2

DST Test Number: 2



Trilobite Testing, Inc

Ref. No: 55862

Printed: 2013.11.22 @ 10:37:42



DRILL STEM TEST REPORT

Prepared For: **Prospect Oil & Gas**

PO Box 837
Russell KS. 676656

ATTN: Brad Hutchinson

Froelich "D" #2

22-12s-16w Ellis,KS

Start Date: 2013.11.19 @ 19:11:00

End Date: 2013.11.20 @ 03:43:45

Job Ticket #: 55356 DST #: 3

Trilobite Testing, Inc
PO Box 362 Hays, KS 67601
ph: 785-625-4778 fax: 785-625-5620

Printed: 2013.11.22 @ 10:37:02



**TRILOBITE
TESTING, INC**

DRILL STEM TEST REPORT

Prospect Oil & Gas

22-12s-16w Ellis,KS

PO Box 837
Russell KS. 676656

Froelich "D" #2

Job Ticket: 55356

DST#: 3

ATTN: Brad Hutchinson

Test Start: 2013.11.19 @ 19:11:00

GENERAL INFORMATION:

Formation: **Arbuckle**

Deviated: No Whipstock: ft (KB)

Time Tool Opened: 21:36:15

Time Test Ended: 03:43:45

Test Type: Conventional Bottom Hole (Reset)

Tester: Tim Phillips

Unit No: 53

Interval: 3455.00 ft (KB) To 3508.00 ft (KB) (TVD)

Reference Elevations: 2035.00 ft (KB)

Total Depth: 3508.00 ft (KB) (TVD)

2030.00 ft (CF)

Hole Diameter: 7.88 inches Hole Condition: Good

KB to GR/CF: 5.00 ft

Serial #: 6799

Inside

Press@RunDepth: 217.93 psig @ 3456.00 ft (KB)

Capacity: 8000.00 psig

Start Date: 2013.11.19

End Date:

2013.11.20

Last Calib.: 2013.11.19

Start Time: 19:11:05

End Time:

03:43:45

Time On Btm: 2013.11.19 @ 21:27:45

Time Off Btm: 2013.11.20 @ 00:49:30

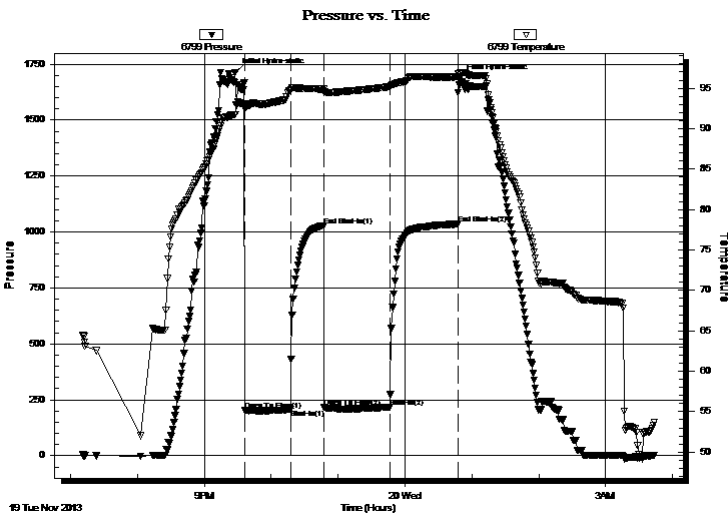
TEST COMMENT: IFP-45-Weak surface blow . Built to 3 1/4"

ISI-30-Dead no blow back

FF-60-built to 4 1/4"

FSI-60-Dead no blow back

PRESSURE SUMMARY



Time (Min.)	Pressure (psig)	Temp (deg F)	Annotation
0	1713.20	91.75	Initial Hydro-static
9	202.05	92.40	Open To Flow (1)
50	209.15	94.71	Shut-In(1)
80	1028.53	94.90	End Shut-In(1)
80	215.99	94.52	Open To Flow (2)
139	217.93	95.19	Shut-In(2)
200	1035.72	96.41	End Shut-In(2)
202	1685.61	96.93	Final Hydro-static

Recovery

Length (ft)	Description	Volume (bbl)
100.00	Oil, 95%O, 5%M	0.73
248.00	SSOCM 5% O, 95% M	1.82
152.00	SOCM 10% O, 80%M	1.93

* Recovery from multiple tests

Gas Rates

	Choke (inches)	Pressure (psig)	Gas Rate (Mcf/d)



**TRILOBITE
TESTING, INC.**

DRILL STEM TEST REPORT

TOOL DIAGRAM

Prospect Oil & Gas

22-12s-16w Ellis,KS

PO Box 837
Russell KS. 676656

Froelich "D" #2

Job Ticket: 55356

DST#: 3

ATTN: Brad Hutchinson

Test Start: 2013.11.19 @ 19:11:00

Tool Information

Drill Pipe:	Length: 3086.00 ft	Diameter: 3.80 inches	Volume: 43.29 bbl	Tool Weight: 2200.00 lb
Heavy Wt. Pipe:	Length: 378.00 ft	Diameter: 2.75 inches	Volume: 2.78 bbl	Weight set on Packer: 25000.00 lb
Drill Collar:	Length: 0.00 ft	Diameter: 2.25 inches	Volume: 0.00 bbl	Weight to Pull Loose: 48000.00 lb
			<u>Total Volume: 46.07 bbl</u>	Tool Chased 0.00 ft
Drill Pipe Above KB:	30.00 ft			String Weight: Initial 44000.00 lb
Depth to Top Packer:	3455.00 ft			Final 45000.00 lb
Depth to Bottom Packer:	ft			
Interval between Packers:	53.00 ft			
Tool Length:	74.00 ft			
Number of Packers:	2	Diameter: 6.75 inches		

Tool Comments:

Tool Description

Tool Description	Length (ft)	Serial No.	Position	Depth (ft)	Accum. Lengths
Change Over Sub	1.00			3435.00	
Shut In Tool	5.00			3440.00	
Hydraulic tool	5.00			3445.00	
Packer	5.00			3450.00	21.00 Bottom Of Top Packer
Packer	5.00			3455.00	
Stubb	1.00			3456.00	
Recorder	0.00	6799	Inside	3456.00	
Recorder	0.00	8648	Outside	3456.00	
Perforations	16.00			3472.00	
Change Over Sub	1.00			3473.00	
Drill Pipe	31.00			3504.00	
Change Over Sub	1.00			3505.00	
Bullnose	3.00			3508.00	53.00 Bottom Packers & Anchor

Total Tool Length: 74.00



**TRILOBITE
TESTING, INC**

DRILL STEM TEST REPORT

FLUID SUMMARY

Prospect Oil & Gas

22-12s-16w Ellis,KS

PO Box 837
Russell KS. 676656

Froelich "D" #2

Job Ticket: 55356

DST#: 3

ATTN: Brad Hutchinson

Test Start: 2013.11.19 @ 19:11:00

Mud and Cushion Information

Mud Type: Gel Chem

Cushion Type:

Oil API:

deg API

Mud Weight: 9.00 lb/gal

Cushion Length:

ft

Water Salinity:

ppm

Viscosity: 47.00 sec/qt

Cushion Volume:

bbbl

Water Loss: 7.78 in³

Gas Cushion Type:

Resistivity: ohm.m

Gas Cushion Pressure:

psig

Salinity: 3700.00 ppm

Filter Cake: 1.00 inches

Recovery Information

Recovery Table

Length ft	Description	Volume bbl
100.00	Oil, 95%O, 5%M	0.735
248.00	SSOCM 5% O, 95% M	1.822
152.00	SOCM 10% O, 80%M	1.932

Total Length: 500.00 ft Total Volume: 4.489 bbl

Num Fluid Samples: 0

Num Gas Bombs: 0

Serial #:

Laboratory Name:

Laboratory Location:

Recovery Comments:

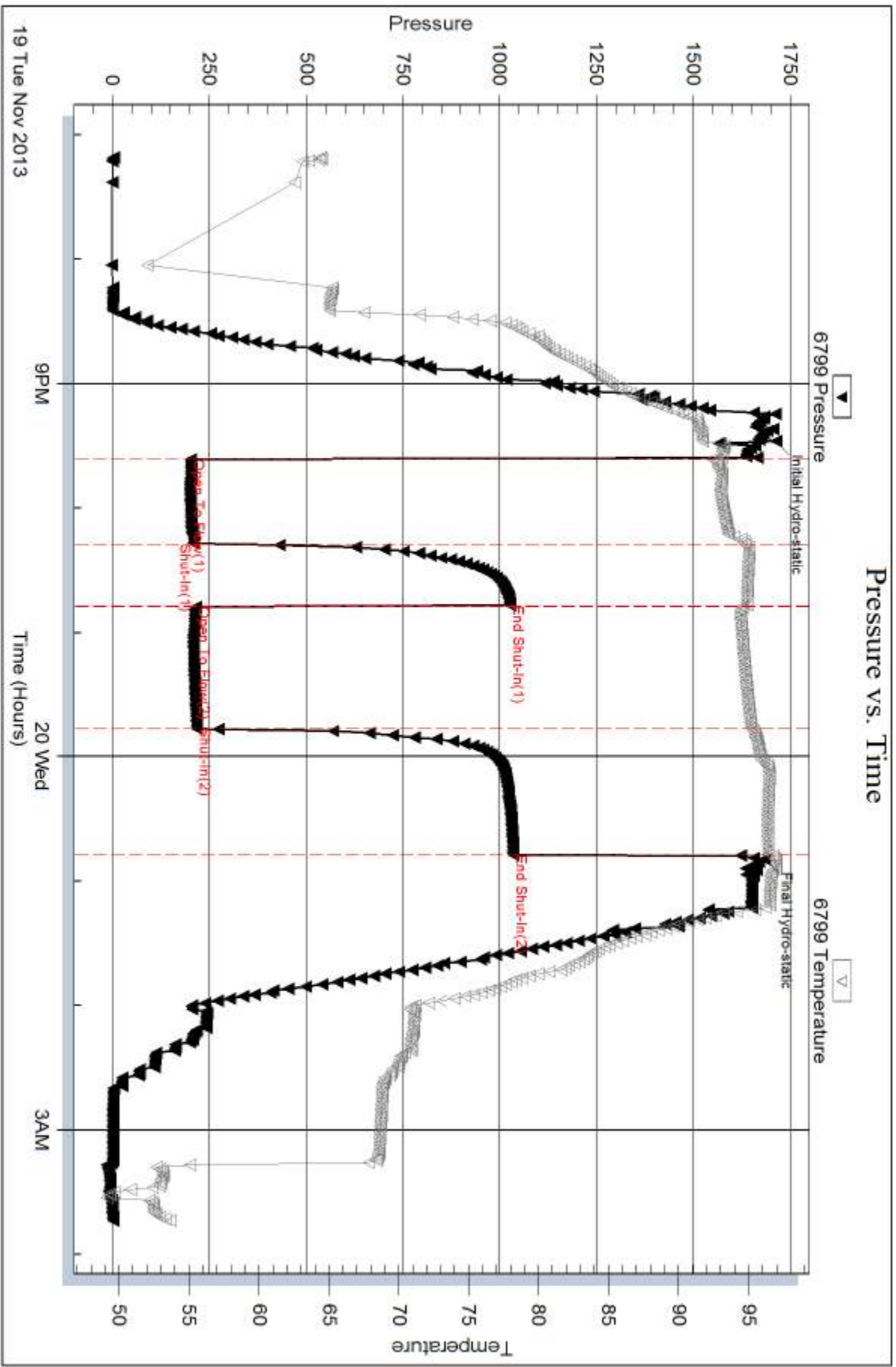
Serial #: 6799

Inside

Prospect Oil & Gas

Froelich "D" #2

DST Test Number: 3



Trilobite Testing, Inc

Ref. No: 55356

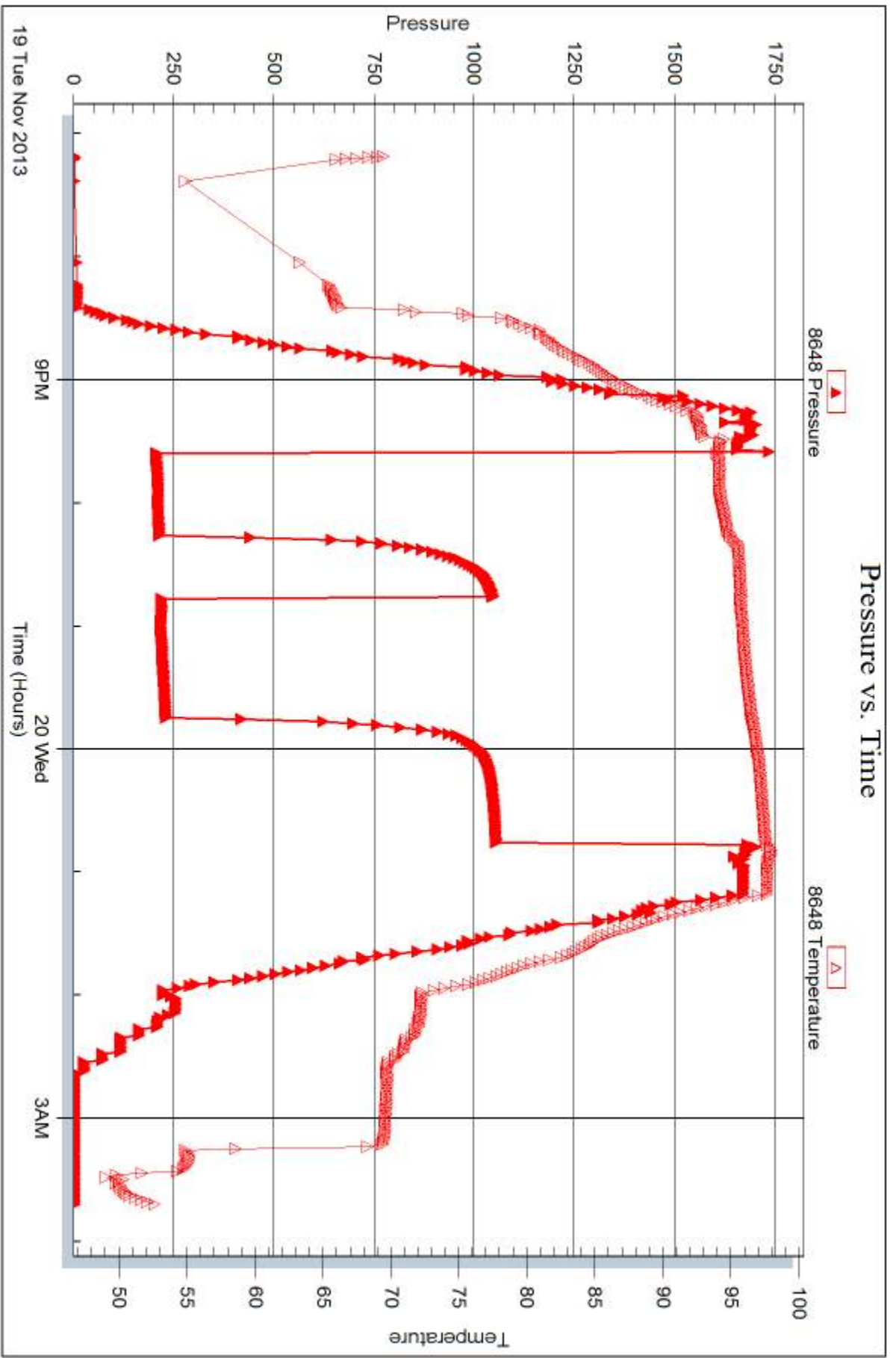
Printed: 2013.11.22 @ 10:37:04

Serial #: 8648

Outside Prospect Oil & Gas

Froelich "D" #2

DST Test Number: 3



Tribble Testing, Inc

Ref. No: 55356

Printed: 2013.11.22 @ 10:37:04



DRILL STEM TEST REPORT

Prepared For: **Prospect Oil & Gas**

PO Box 837
Russell KS. 676656

ATTN: Brad Hutchinson

Froelich "D" #2

22-12s-16w Ellis,KS

Start Date: 2013.11.20 @ 04:37:10

End Date: 2013.11.20 @ 09:43:10

Job Ticket #: 55357 DST #: 4

Trilobite Testing, Inc
PO Box 362 Hays, KS 67601
ph: 785-625-4778 fax: 785-625-5620

Printed: 2013.11.22 @ 10:36:15



**TRILOBITE
TESTING, INC**

DRILL STEM TEST REPORT

Prospect Oil & Gas

22-12s-16w Ellis,KS

PO Box 837
Russell KS. 676656

Froelich "D" #2

Job Ticket: 55357

DST#: 4

ATTN: Brad Hutchinson

Test Start: 2013.11.20 @ 04:37:10

GENERAL INFORMATION:

Formation: **Arbuckle**

Deviated: No Whipstock: ft (KB)

Time Tool Opened: 06:37:10

Time Test Ended: 09:43:10

Test Type: Conventional Bottom Hole (Reset)

Tester: Tim Phillips

Unit No: 53

Interval: 3502.00 ft (KB) To 3508.00 ft (KB) (TVD)

Reference Elevations: 2035.00 ft (KB)

Total Depth: 3508.00 ft (KB) (TVD)

2030.00 ft (CF)

Hole Diameter: 7.88 inches Hole Condition: Good

KB to GR/CF: 5.00 ft

Serial #: 6799 Inside

Press@RunDepth: 1672.52 psig @ 3503.00 ft (KB)

Capacity: 8000.00 psig

Start Date: 2013.11.20

End Date:

2013.11.20

Last Calib.:

2013.11.19

Start Time: 04:37:15

End Time:

09:43:09

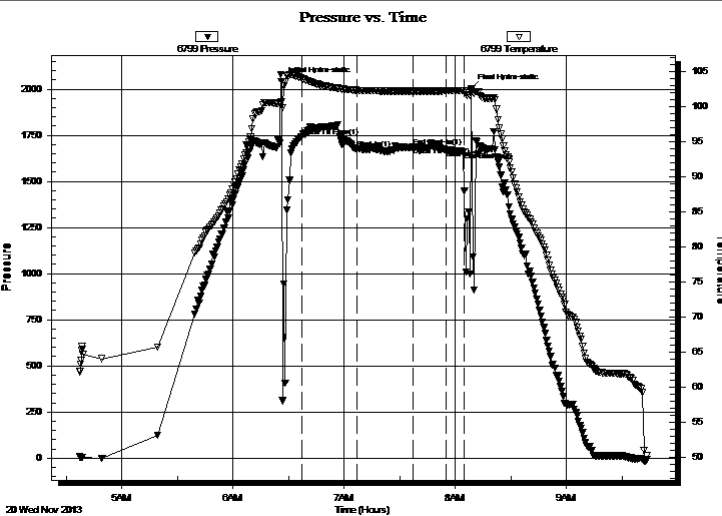
Time On Btm:

2013.11.20 @ 06:26:10

Time Off Btm:

2013.11.20 @ 08:08:40

TEST COMMENT: IFP-30-Blow built to 1 1/2" Died back to 1"
ISI-30-Dead no blow back
FF-20-Dead no blow
FSI-15-Dead no blow



PRESSURE SUMMARY

Time (Min.)	Pressure (psig)	Temp (deg F)	Annotation
0	2040.39	100.72	Initial Hydro-static
11	1743.94	104.07	Open To Flow (1)
41	1677.64	102.39	Shut-In(1)
71	1686.78	102.27	End Shut-In(1)
71	1686.82	102.27	Open To Flow (2)
89	1672.52	102.29	Shut-In(2)
99	1660.98	102.31	End Shut-In(2)
103	2000.60	102.18	Final Hydro-static

Recovery

Length (ft)	Description	Volume (bbl)
10.00	Mud	0.07

Gas Rates

Choke (inches)	Pressure (psig)	Gas Rate (Mcf/d)

* Recovery from multiple tests



**TRILOBITE
TESTING, INC**

DRILL STEM TEST REPORT

TOOL DIAGRAM

Prospect Oil & Gas

22-12s-16w Ellis,KS

PO Box 837
Russell KS. 676656

Froelich "D" #2

Job Ticket: 55357

DST#: 4

ATTN: Brad Hutchinson

Test Start: 2013.11.20 @ 04:37:10

Tool Information

Drill Pipe:	Length: 3020.00 ft	Diameter: 3.80 inches	Volume: 42.36 bbl	Tool Weight: 2200.00 lb
Heavy Wt. Pipe:	Length: 469.00 ft	Diameter: 2.75 inches	Volume: 3.45 bbl	Weight set on Packer: 25000.00 lb
Drill Collar:	Length: 0.00 ft	Diameter: 2.25 inches	Volume: 0.00 bbl	Weight to Pull Loose: 15000.00 lb
			<u>Total Volume: 45.81 bbl</u>	Tool Chased 0.00 ft
Drill Pipe Above KB:	8.00 ft			String Weight: Initial 43000.00 lb
Depth to Top Packer:	3502.00 ft			Final 43500.00 lb
Depth to Bottom Packer:	ft			
Interval between Packers:	6.00 ft			
Tool Length:	27.00 ft			
Number of Packers:	2	Diameter: 6.75 inches		

Tool Comments:

Tool Description

Tool Description	Length (ft)	Serial No.	Position	Depth (ft)	Accum. Lengths
Change Over Sub	1.00			3482.00	
Shut In Tool	5.00			3487.00	
Hydraulic tool	5.00			3492.00	
Packer	5.00			3497.00	21.00 Bottom Of Top Packer
Packer	5.00			3502.00	
Stubb	1.00			3503.00	
Recorder	0.00	6799	Inside	3503.00	
Recorder	0.00	8648	Outside	3503.00	
Perforations	2.00			3505.00	
Bullnose	3.00			3508.00	6.00 Bottom Packers & Anchor
Total Tool Length:	27.00				



**TRILOBITE
TESTING, INC**

DRILL STEM TEST REPORT

FLUID SUMMARY

Prospect Oil & Gas

22-12s-16w Ellis,KS

PO Box 837
Russell KS. 676656

Froelich "D" #2

Job Ticket: 55357

DST#: 4

ATTN: Brad Hutchinson

Test Start: 2013.11.20 @ 04:37:10

Mud and Cushion Information

Mud Type: Gel Chem

Cushion Type:

Oil API:

deg API

Mud Weight: 9.00 lb/gal

Cushion Length:

ft

Water Salinity:

ppm

Viscosity: 51.00 sec/qt

Cushion Volume:

bbbl

Water Loss: 7.17 in³

Gas Cushion Type:

Resistivity: ohm.m

Gas Cushion Pressure:

psig

Salinity: 3400.00 ppm

Filter Cake: inches

Recovery Information

Recovery Table

Length ft	Description	Volume bbl
10.00	Mud	0.073

Total Length: 10.00 ft Total Volume: 0.073 bbl

Num Fluid Samples: 0

Num Gas Bombs: 0

Serial #:

Laboratory Name:

Laboratory Location:

Recovery Comments:

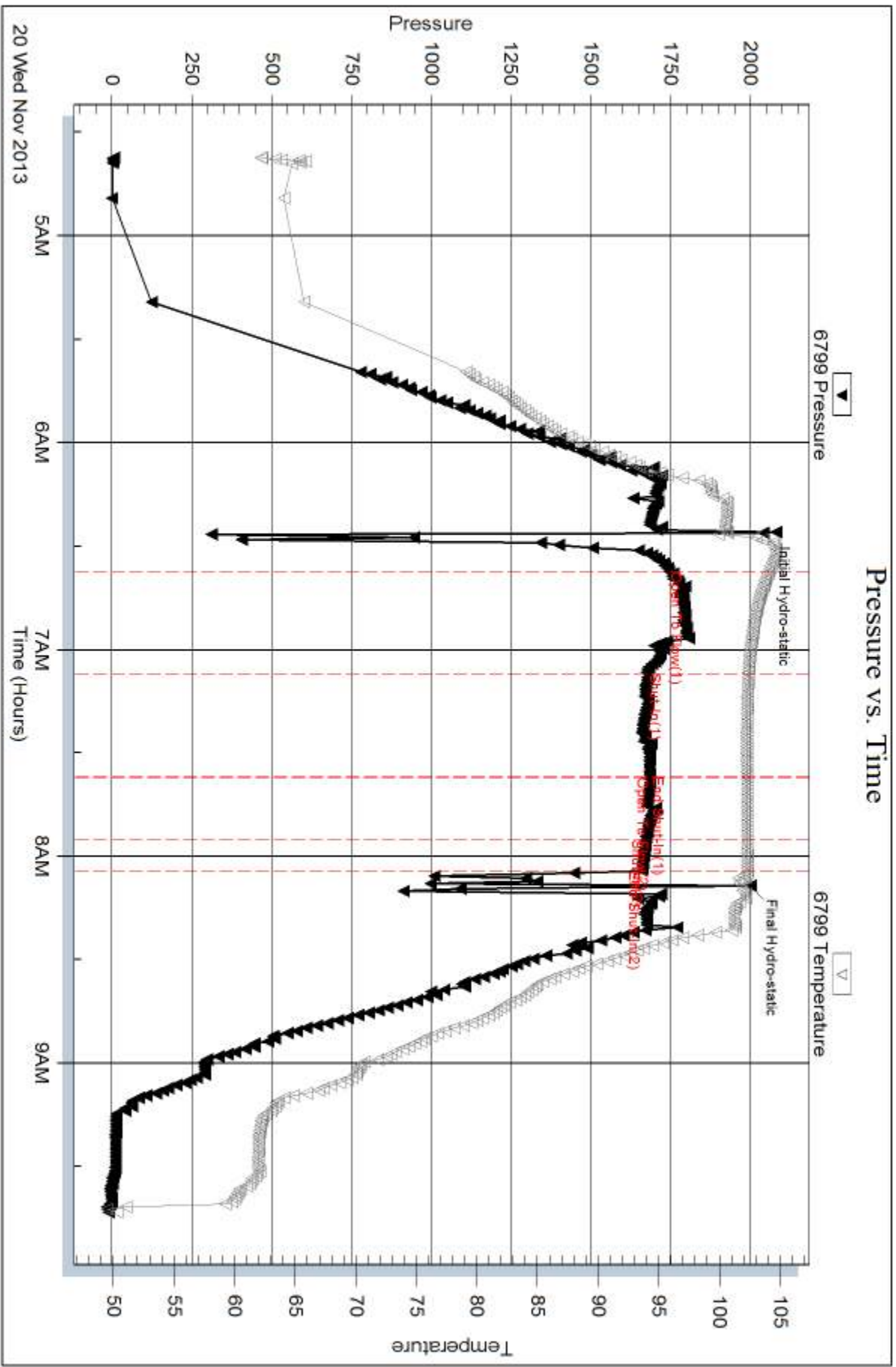
Serial #: 6799

Inside

Prospect Oil & Gas

Froelich "D" #2

DST Test Number: 4

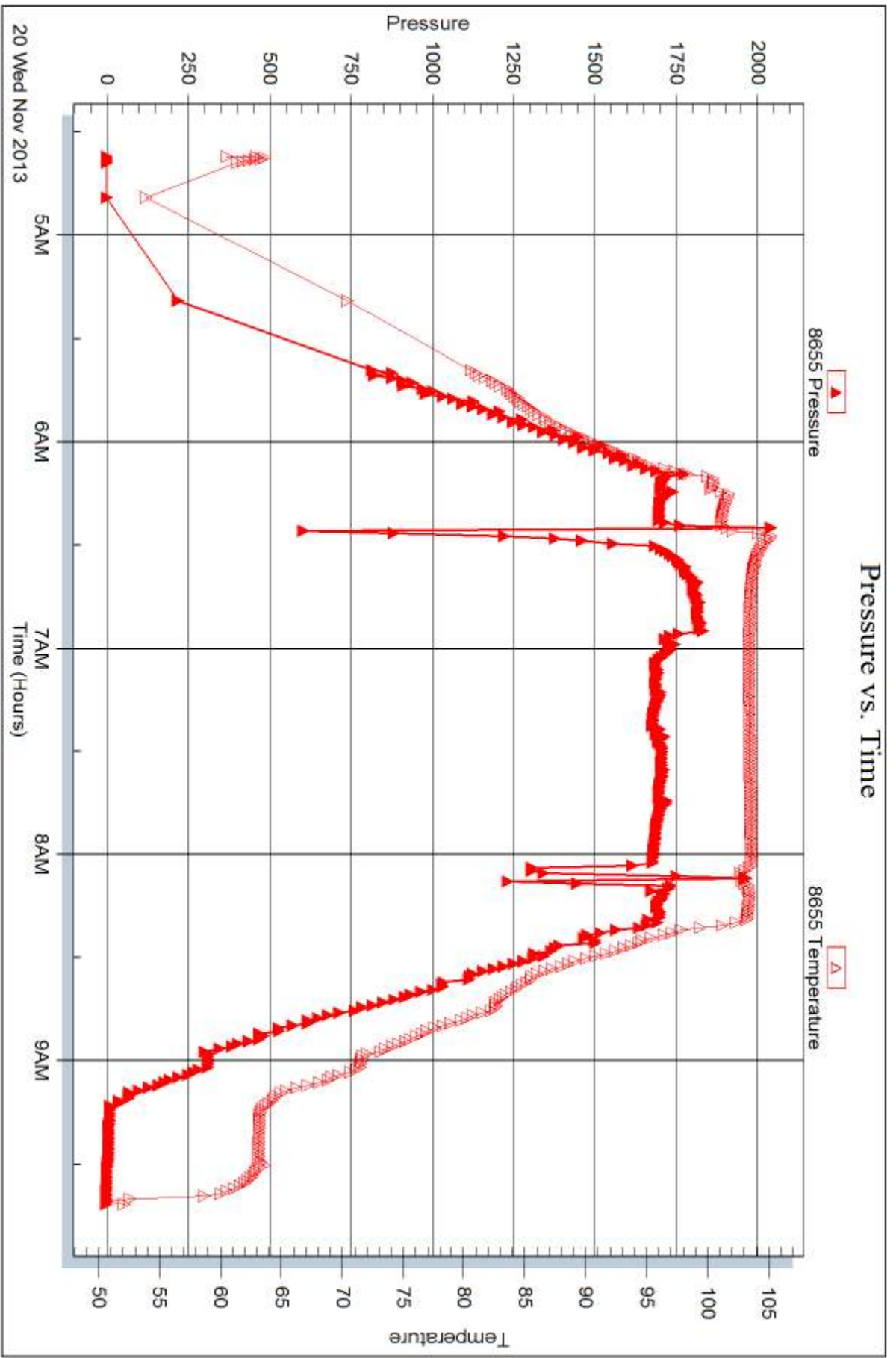


Serial #: 8655

Prospect Oil & Gas

Froelich "D" #2

DST Test Number: 4



Trilobite Testing, Inc

Ref. No: 55357

Printed: 2013.11.22 @ 10:36:17



DRILL STEM TEST REPORT

Prepared For: **Prospect Oil & Gas**

PO Box 837
Russell KS. 676656

ATTN: Brad Hutchinson

Froelich "D" #2

22-12s-16w Ellis,KS

Start Date: 2013.11.19 @ 14:22:00

End Date: 2013.11.19 @ 20:40:45

Job Ticket #: 55358 DST #: 5

Trilobite Testing, Inc

PO Box 362 Hays, KS 67601

ph: 785-625-4778 fax: 785-625-5620

Printed: 2013.11.22 @ 10:35:27



TRILOBITE TESTING, INC.

DRILL STEM TEST REPORT

Prospect Oil & Gas

22-12s-16w Ellis,KS

PO Box 837
Russell KS. 676656

Froelich "D" #2

Job Ticket: 55358

DST#: 5

ATTN: Brad Hutchinson

Test Start: 2013.11.19 @ 14:22:00

GENERAL INFORMATION:

Formation: **Arbuckle**

Deviated: No Whipstock: ft (KB)

Time Tool Opened: 16:17:45

Time Test Ended: 20:40:45

Test Type: Conventional Bottom Hole (Reset)

Tester: Cody Bloedorn

Unit No: 53

Interval: 3456.00 ft (KB) To 3508.00 ft (KB) (TVD)

Reference Elevations: 2035.00 ft (KB)

Total Depth: 3508.00 ft (KB) (TVD)

2030.00 ft (CF)

Hole Diameter: 7.88 inches Hole Condition: Fair

KB to GR/CF: 5.00 ft

Serial #: 6799 Inside

Press@RunDepth: 92.99 psig @ 3495.00 ft (KB)

Capacity: 8000.00 psig

Start Date: 2013.11.19 End Date: 2013.11.19

Last Calib.: 2013.11.19

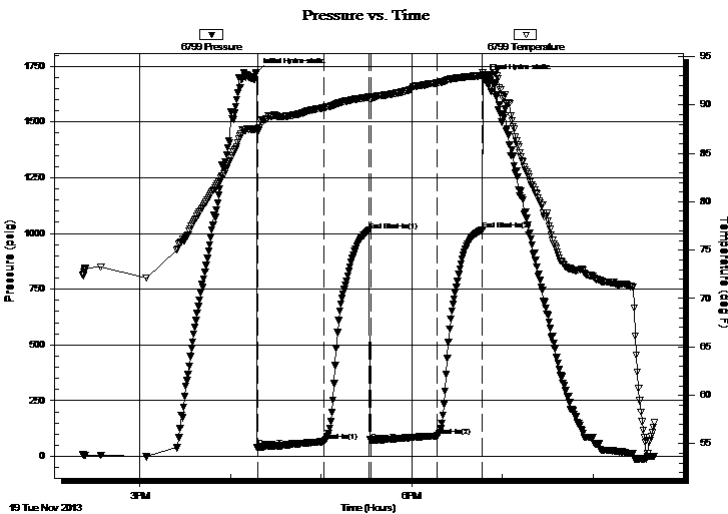
Start Time: 14:22:05 End Time: 20:40:44

Time On Btm: 2013.11.19 @ 16:17:00

Time Off Btm: 2013.11.19 @ 18:47:00

TEST COMMENT: 45 - IF- 3 3/4" blow
30 - IS- No return
45 - FF- 3" blow
30 - FS- No return

PRESSURE SUMMARY



Time (Min.)	Pressure (psig)	Temp (deg F)	Annotation
0	1722.11	87.58	Initial Hydro-static
1	40.48	87.40	Open To Flow (1)
45	67.22	89.71	Shut-In(1)
75	1014.07	90.80	End Shut-In(1)
76	70.19	90.71	Open To Flow (2)
120	92.99	92.27	Shut-In(2)
150	1015.60	93.03	End Shut-In(2)
150	1693.58	93.31	Final Hydro-static

Recovery

Length (ft)	Description	Volume (bbl)
125.00	HOCM, 50%M, 50%O	0.92
25.00	HOCM, 40%O, 60%M	0.18

* Recovery from multiple tests

Gas Rates

	Choke (inches)	Pressure (psig)	Gas Rate (Mcf/d)



**TRILOBITE
TESTING, INC**

DRILL STEM TEST REPORT

TOOL DIAGRAM

Prospect Oil & Gas

22-12s-16w Ellis,KS

PO Box 837
Russell KS. 676656

Froelich "D" #2

Job Ticket: 55358

DST#: 5

ATTN: Brad Hutchinson

Test Start: 2013.11.19 @ 14:22:00

Tool Information

Drill Pipe:	Length: 2994.00 ft	Diameter: 3.80 inches	Volume: 42.00 bbl	Tool Weight: 2200.00 lb
Heavy Wt. Pipe:	Length: 465.00 ft	Diameter: 2.75 inches	Volume: 3.42 bbl	Weight set on Packer: 30000.00 lb
Drill Collar:	Length: 0.00 ft	Diameter: 2.25 inches	Volume: 0.00 bbl	Weight to Pull Loose: 48000.00 lb
			<u>Total Volume: 45.42 bbl</u>	Tool Chased 1.00 ft
Drill Pipe Above KB:	23.00 ft			String Weight: Initial 42000.00 lb
Depth to Top Packer:	3456.00 ft			Final 43000.00 lb
Depth to Bottom Packer:	ft			
Interval between Packers:	52.00 ft			
Tool Length:	72.00 ft			
Number of Packers:	2	Diameter: 6.75 inches		

Tool Comments:

Tool Description

Tool Description	Length (ft)	Serial No.	Position	Depth (ft)	Accum. Lengths
Change Over Sub	1.00			3437.00	
Shut In Tool	5.00			3442.00	
Hydraulic tool	5.00			3447.00	
Packer	5.00			3452.00	20.00 Bottom Of Top Packer
Packer	4.00			3456.00	
Stubb	1.00			3457.00	
Perforations	5.00			3462.00	
Change Over Sub	1.00			3463.00	
Drill Pipe	31.00			3494.00	
Change Over Sub	1.00			3495.00	
Recorder	0.00	6799	Inside	3495.00	
Recorder	0.00	8648	Outside	3495.00	
Perforations	10.00			3505.00	
Bullnose	3.00			3508.00	52.00 Bottom Packers & Anchor

Total Tool Length: 72.00



**TRILOBITE
TESTING, INC**

DRILL STEM TEST REPORT

FLUID SUMMARY

Prospect Oil & Gas

22-12s-16w Ellis,KS

PO Box 837
Russell KS. 676656

Froelich "D" #2

Job Ticket: 55358

DST#: 5

ATTN: Brad Hutchinson

Test Start: 2013.11.19 @ 14:22:00

Mud and Cushion Information

Mud Type: Gel Chem

Cushion Type:

Oil API:

deg API

Mud Weight: 9.00 lb/gal

Cushion Length:

ft

Water Salinity:

ppm

Viscosity: 49.00 sec/qt

Cushion Volume:

bbbl

Water Loss: 5.99 in³

Gas Cushion Type:

Resistivity: ohm.m

Gas Cushion Pressure:

psig

Salinity: 3900.00 ppm

Filter Cake: inches

Recovery Information

Recovery Table

Length ft	Description	Volume bbl
125.00	HOCM, 50%M, 50%O	0.918
25.00	HOCM, 40%O, 60%M	0.184

Total Length: 150.00 ft Total Volume: 1.102 bbl

Num Fluid Samples: 0

Num Gas Bombs: 0

Serial #:

Laboratory Name:

Laboratory Location:

Recovery Comments:

Serial #: 6799

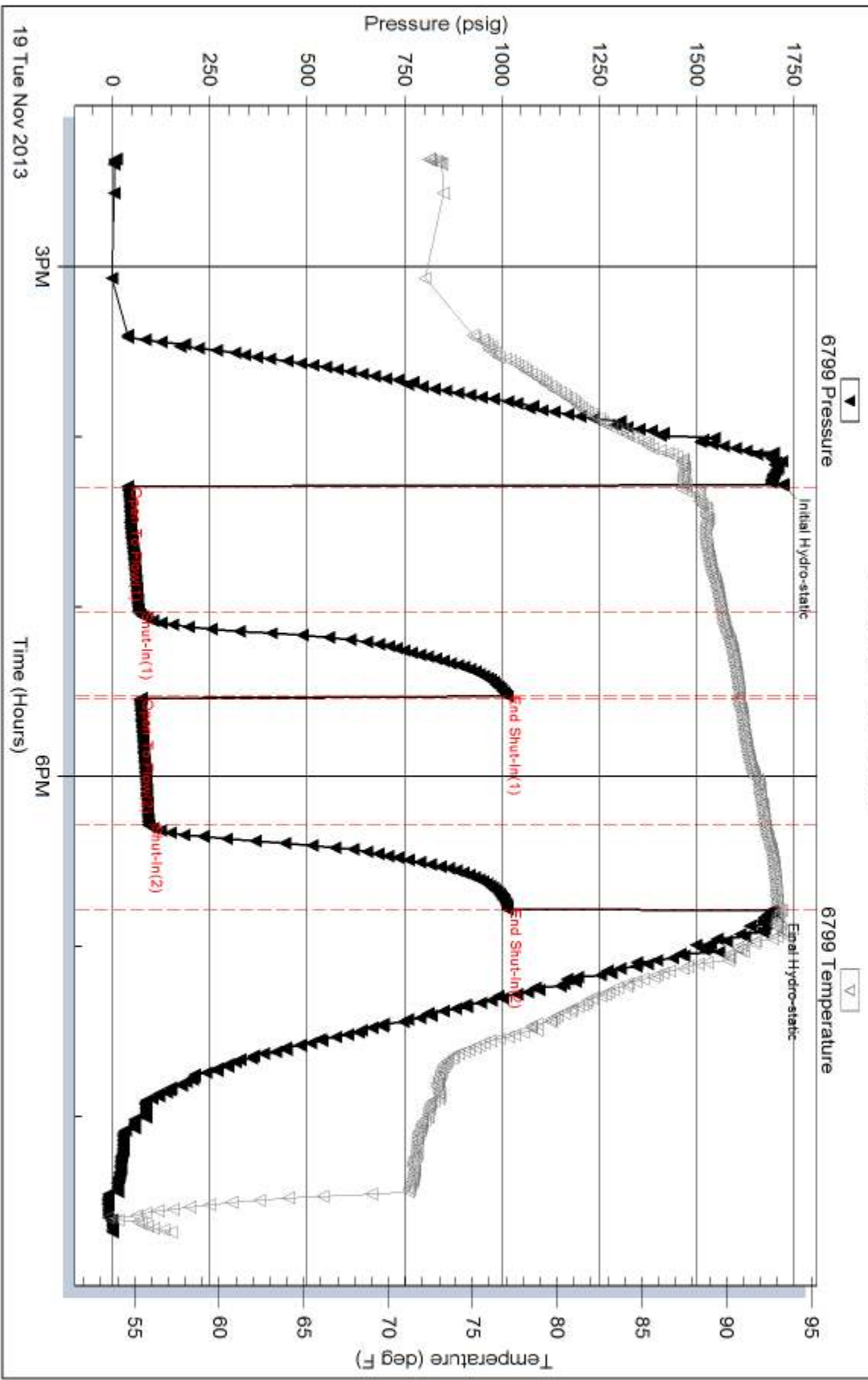
Inside

Prospect Oil & Gas

Froelich "D" #2

DST Test Number: 5

Pressure vs. Time



Triobite Testing, Inc

Ref. No: 55358

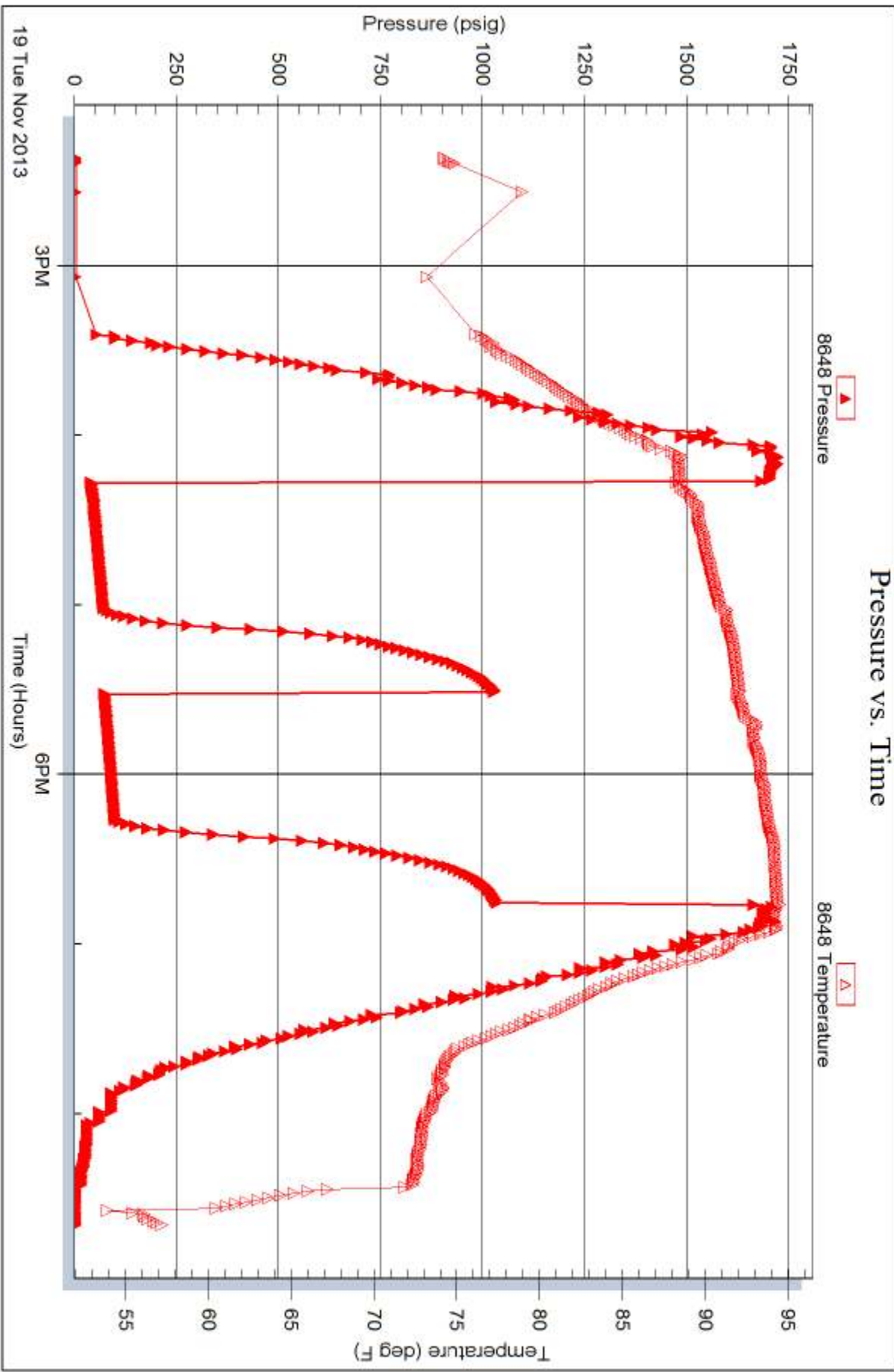
Printed: 2013.11.22 @ 10:35:30

Serial #: 8648

Outside Prospect Oil & Gas

Froelich "D" #2

DST Test Number: 5



Trilobite Testing, Inc

Ref. No: 55358

Printed: 2013.11.22 @ 10:35:30



TRILOBITE TESTING INC.

1515 Commerce Parkway • Hays, Kansas 67601

Test Ticket

NO. **55861**

Well Name & No. Froelich "D" #2 Test No. 1 Date 11-17-13
 Company Prospect Oil & Gas Corp. Elevation 2035 KB 2030 GL
 Address P.O. Box 837 Russell KS. 67665
 Co. Rep / Geo. Brad Hutchison Rig shields
 Location: Sec. 22 Twp. 12 S. Rge. 16 W. Co. Ellis State KS.

Interval Tested 3180 - 3,295 Zone Tested _____
 Anchor Length 115 Drill Pipe Run 2,710 Mud Wt. 9.0
 Top Packer Depth 3,175 Drill Collars Run _____ Vis 51
 Bottom Packer Depth 3180 Wt. Pipe Run 469 WL 7.2
 Total Depth 3,295 Chlorides 3,400 ppm System LCM 2.0

Blow Description I.F. - W.S.B. Built to (1/4" in 30 min.)
I.S.I. - No B.B.
E.F. - W.S.B. (Died in 8 min.)
F.S.I. - No B.B.

Rec	Feet of	%gas	%oil	%water	%mud
<u>70</u>	<u>mud</u>				<u>100</u>
Rec	Feet of	%gas	%oil	%water	%mud
Rec	Feet of	%gas	%oil	%water	%mud
Rec	Feet of	%gas	%oil	%water	%mud

Rec Total 70 BHT 94.6 Gravity _____ API RW _____ @ _____ °F Chlorides _____ ppm

(A) Initial Hydrostatic 1,593 Test 1150 T-On Location 21:13:00
 (B) First Initial Flow 64 Jars _____ T-Started 22:15:00
 (C) First Final Flow 84 Safety Joint _____ T-Open 00:09:00
 (D) Initial Shut-In 778 Circ Sub _____ T-Pulled 02:09:00
 (E) Second Initial Flow 87 Hourly Standby _____ T-Out 02:43:00
 (F) Second Final Flow 103 Mileage 30 R. + 38 rt 58.90 Comments _____
 (G) Final Shut-In 767 Sampler _____ "thank you"
 (H) Final Hydrostatic 1,578 Straddle _____ Ruined Shale Packer _____
 Shale Packer _____ Ruined Packer _____

Initial Open 30 Extra Packer _____ Extra Copies _____
 Initial Shut-In 30 Extra Recorder _____ Sub Total 0
 Final Flow 30 Day Standby _____ Total 1208.90
 Final Shut-In 30 Accessibility _____ MP/DST Disc't _____
 Sub Total 1208.90

Approved By _____ Our Representative [Signature]

Trilobite Testing Inc. shall not be liable for damaged of any kind of the property or personnel of the one for whom a test is made, or for any loss suffered or sustained, directly or indirectly, through the use of its equipment, or its statements or opinion concerning the results of any test, tools lost or damaged in the hole shall be paid for at cost by the party for whom the test is made.



TRILOBITE TESTING INC.

1515 Commerce Parkway • Hays, Kansas 67601

Test Ticket

NO. **55862**

Well Name & No. Froelich "D" #2 Test No. 2 Date 11-18-13
 Company Prospect Oil & Gas Corp Elevation 2035 KB 2030 GL
 Address P.O. Box 837 Russell KS. 67665
 Co. Rep / Geo. Bracl Hutchison Rig Shields
 Location: Sec. 22 Twp. 12 S. Rge. 16 W. Co. Ell. Co. State KS.

Interval Tested 3,295 - 3,342 Zone Tested L5g - "E-G"
 Anchor Length 47 Drill Pipe Run 2920 Mud Wt. 9.1
 Top Packer Depth 3290 Drill Collars Run --- Vis 50
 Bottom Packer Depth 3295 Wt. Pipe Run 373 WL 5.8
 Total Depth 3342 Chlorides 4,800 ppm System LCM 1

Blow Description I.F. - 30 - 1/4 INT. Blow Built to (B.O.B. in 2 1/2 min.)
I.S.I. - 30 - W.S.B. Built to (3 1/2" in 30 min.)
E.F. - 60 - 1/4 INT. Blow Built to (B.O.B. in 10 Min.)
F.S.I. - 60 - W.S.B. Built to (5 1/2" in 60 Min.)

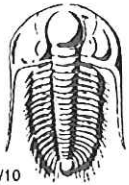
Rec	Feet of	%gas	%oil	%water	%mud
<u>378</u>	<u>GIP</u>	<u>100</u>			
<u>461</u>	<u>H65MCD</u>	<u>40</u>	<u>55</u>		<u>5</u>
<u>126</u>	<u>505 MW (oil specs)</u>			<u>95</u>	<u>5</u>
Rec Total	<u>587</u>	BHT <u>95</u>	Gravity <u>51</u>	API RW <u>51</u>	@ <u>45</u> °F Chlorides <u>35,000</u> ppm

(A) Initial Hydrostatic 1,593 Test 1150 T-On Location 14:45:00
 (B) First Initial Flow 64 Jars _____ T-Started 15:36:00
 (C) First Final Flow 84 Safety Joint _____ T-Open 17:11:00
 (D) Initial Shut-In 778 Circ Sub _____ T-Pulled 20:11:00
 (E) Second Initial Flow 87 Hourly Standby _____ T-Out 22:08:00
 (F) Second Final Flow 103 Mileage 30 R.T. 58.90
 (G) Final Shut-In 767 Sampler _____
 (H) Final Hydrostatic 1,578 Straddle _____

Initial Open 30 Shale Packer _____
 Initial Shut-In 30 Extra Packer _____
 Final Flow 60 Extra Recorder _____
 Final Shut-In 60 Day Standby _____
 Sub Total 1208.90 Accessibility _____
 MP/DST Disc't _____

Approved By _____ Our Representative [Signature]

Trilobite Testing Inc. shall not be liable for damaged of any kind of the property or personnel of the one for whom a test is made, or for any loss suffered or sustained, directly or indirectly, through the use of its equipment, or its statements or opinion concerning the results of any test, tools lost or damaged in the hole shall be paid for at cost by the party for whom the test is made.



TRILOBITE TESTING INC.

1515 Commerce Parkway • Hays, Kansas 67601

Test Ticket

NO. 55356

Well Name & No. Froelich "D" Test No. 3 Date 11/18/2013
 Company Prospect Oil & Gas Corp Elevation 2035 KB 2030 GL
 Address P.O. Box 837 Russell, KS 67665
 Co. Rep / Geo. BRAD HUTCHISON Rig Shield Rig #2
 Location: Sec. 22 Twp. 125 Rge. 16W Co. Ellis State KS

Interval Tested 3455 - 3508 Zone Tested Arbuckle
 Anchor Length 53 Drill Pipe Run 3086 Mud Wt. 9.2
 Top Packer Depth 3451 Drill Collars Run 0 Vis 47
 Bottom Packer Depth 3455 Wt. Pipe Run 378 WL 7.8
 Total Depth 3508 Chlorides 3700 ppm System LCM 2[#]
 Blow Description IFP-45- built to 3.25 IN
ISI-30- DEAD NO blow back
FF-60- Built 4 1/4 IN
FSI-60- DEAD NO blow back

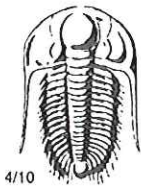
Rec	Feet of	%gas	%oil	%water	%mud
<u>100</u>	<u>Oil</u>		<u>95</u>		<u>5</u>
<u>248</u>	<u>SSOCM</u>		<u>5</u>		<u>95</u>
<u>152</u>	<u>SOCM</u>		<u>10</u>		<u>80</u>

Rec Total 500 BHT 97 Gravity 32 API RW — @ — °F Chlorides — ppm

(A) Initial Hydrostatic 1713 Test 950 T-On Location 1845
 (B) First Initial Flow 202 Jars _____ T-Started 1911
 (C) First Final Flow 209 Safety Joint _____ T-Open 2136
 (D) Initial Shut-In 1028 Circ Sub _____ T-Pulled 0046
 (E) Second Initial Flow 215 Hourly Standby _____ T-Out _____
 (F) Second Final Flow 217 Mileage 74 R/T 58.90 Comments _____
 (G) Final Shut-In 1035 Sampler _____
 (H) Final Hydrostatic 1685 Straddle _____ Ruined Shale Packer _____
 Shale Packer _____ Ruined Packer _____
 Extra Packer _____ Extra Copies _____
 Initial Open 45 Extra Recorder _____ Sub Total 0
 Initial Shut-In 30 Day Standby _____ Total 1008.90
 Final Flow 60 Accessibility _____ MP/DST Disc't _____
 Final Shut-In 60 Sub Total 1008.90

Approved By _____ Our Representative Jim Phillips

Trilobite Testing Inc. shall not be liable for damaged of any kind of the property or personnel of the one for whom a test is made, or for any loss suffered or sustained, directly or indirectly, through the use of its equipment, or its statements or opinion concerning the results of any test, tools lost or damaged in the hole shall be paid for at cost by the party for whom the test is made.



TRILOBITE TESTING INC.

1515 Commerce Parkway • Hays, Kansas 67601

Test Ticket

NO. **55357**

Well Name & No. Froelich "D" Test No. 4 Date 11/20/2013
 Company Prospect Oil & Gas Corp Elevation 2035 KB 2030 GL
 Address P.O. Box 837 Russell, KS 67665
 Co. Rep / Geo. BRAD Hutchison Rig Shields Rig # 2
 Location: Sec. 22 Twp. 12 S Rge. 16 W Co. Ellis State KS

Interval Tested 3502 - 3508 Zone Tested Aebuckle
 Anchor Length 6' Drill Pipe Run 3020 Mud Wt. 9.2
 Top Packer Depth 3498 Drill Collars Run 0 Vis 47
 Bottom Packer Depth 3502 Wt. Pipe Run 378 WL 7.8
 Total Depth 3508 Chlorides 3700 ppm System LCM 2nd
 Blow Description IFP - 30 - Built to 1.5 in Dead back lin
ISI - 30 - Dead no blow back
FF - 20 - Dead no blow
FSI - 15 - Dead no blow back

Rec	Feet of	%gas	%oil	%water	%mud
<u>10</u>	<u>Mud</u>			<u>100</u>	
Rec	Feet of	%gas	%oil	%water	%mud
Rec	Feet of	%gas	%oil	%water	%mud
Rec	Feet of	%gas	%oil	%water	%mud
Rec	Feet of	%gas	%oil	%water	%mud

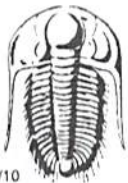
Rec Total 10 BHT 102 Gravity — API RW — @ — °F Chlorides — ppm

(A) Initial Hydrostatic 2040 Test 950 T-On Location 1845
 (B) First Initial Flow 1743 Jars — T-Started 0437
 (C) First Final Flow 1677 Safety Joint — T-Open 0637
 (D) Initial Shut-In 1686 Circ Sub — T-Pulled 0810
 (E) Second Initial Flow 1686 Hourly Standby — T-Out 0953
 (F) Second Final Flow 1672 Mileage 74 R/T Comments —
 (G) Final Shut-In 1660 Sampler —
 (H) Final Hydrostatic 2000 Straddle — Ruined Shale Packer —
 Shale Packer — Ruined Packer —
 Extra Packer — Extra Copies —
 Initial Open 30 Extra Recorder — Sub Total 0
 Initial Shut-In 30 Day Standby — Total 950
 Final Flow 20 Accessibility — MP/DST Disc't —
 Final Shut-In 15 Sub Total 950

Approved By _____

Our Representative Jim Phillips

Trilobite Testing Inc. shall not be liable for damaged of any kind of the property or personnel of the one for whom a test is made, or for any loss suffered or sustained, directly or indirectly, through the use of its equipment, or its statements or opinion concerning the results of any test, tools lost or damaged in the hole shall be paid for at cost by the party for whom the test is made.



TRILOBITE TESTING INC.

1515 Commerce Parkway • Hays, Kansas 67601

Test Ticket

NO. **55358**

Well Name & No. Froelich "D" #2 Test No. 05 Date 11-20-13
 Company Prospect oil & Gas Elevation 2035 KB 2030 GL
 Address Po Box 837, Russell KS,
 Co. Rep / Geo. Brad Hutchison Rig Shields
 Location: Sec. 22 Twp. 12s Rge. 16w Co. Ellis State KS

Interval Tested 3456 - 3508 Zone Tested Arbuckle
 Anchor Length 52' Drill Pipe Run 2994' Mud Wt. 9.2
 Top Packer Depth 3451 Drill Collars Run — Vis 49
 Bottom Packer Depth 3456 Wt. Pipe Run 465' WL 6-0
 Total Depth 3508 Chlorides 3,900 ppm System LCM —
 Blow Description IF - 3 3/4" blow
ISI - No return
FF - 3" blow
FSI - No return

Rec	Feet of	%gas	%oil	%water	%mud
<u>125</u>	<u>HOCM</u>	<u>50</u>	<u>50</u>	<u>50</u>	<u>50</u>
<u>25</u>	<u>HOCM</u>	<u>40</u>	<u>60</u>	<u>60</u>	<u>60</u>
Rec	Feet of	%gas	%oil	%water	%mud
Rec	Feet of	%gas	%oil	%water	%mud

Rec Total 150' BHT 93° Gravity — API RW — @ —° F Chlorides — ppm

(A) Initial Hydrostatic <u>1722</u>	<input checked="" type="checkbox"/> Test <u>1150</u>	T-On Location <u>13:47</u>
(B) First Initial Flow <u>40</u>	<input type="checkbox"/> Jars	T-Started <u>14:22 2:22pm</u>
(C) First Final Flow <u>67</u>	<input type="checkbox"/> Safety Joint	T-Open <u>16:18</u>
(D) Initial Shut-In <u>1014</u>	<input type="checkbox"/> Circ Sub	T-Pulled <u>18:48</u>
(E) Second Initial Flow <u>70</u>	<input type="checkbox"/> Hourly Standby	T-Out <u>20:42</u>
(F) Second Final Flow <u>92</u>	<input checked="" type="checkbox"/> Mileage <u>44 RT 58.90</u>	Comments
(G) Final Shut-In <u>1015</u>	<input type="checkbox"/> Sampler	
(H) Final Hydrostatic <u>1693</u>	<input type="checkbox"/> Straddle	

Initial Open 45
 Initial Shut-In 30
 Final Flow 45
 Final Shut-In 30

Sub Total 1208.90

Approved By _____ Our Representative Gody Bloodon

TriLOBite Testing Inc. shall not be liable for damaged of any kind of the property or personnel of the one for whom a test is made, or for any loss suffered of sustained, directly or indirectly, through the use of its equipment, or its statements or opinion concerning the results of any test, tools lost or damaged in the hole shall be paid for at cost by the party for whom the test is made.