



TRILOBITE TESTING, INC

DRILL STEM TEST REPORT

Herman L. Loeb, LLC.
 P.O. Box 838
 Lawrenceville, IL 62439
 ATTN: Jim Hall

4-35s.-12w. Barber Co.
School Trust 21-4
 Job Ticket: 51870 **DST#: 1**
 Test Start: 2014.01.29 @ 09:27:16

GENERAL INFORMATION:

Formation: **Miss. Chert.**
 Deviated: No Whipstock: 0.00 ft (KB)
 Time Tool Opened: 12:22:16
 Time Test Ended: 17:18:01
 Interval: **4819.00 ft (KB) To 4837.00 ft (KB) (TVD)**
 Total Depth: 4837.00 ft (KB) (TVD)
 Hole Diameter: 7.88 inches Hole Condition: Fair
 Test Type: Conventional Bottom Hole (Initial)
 Tester: Ryan Reynolds
 Unit No: 48
 Reference Elevations: 1452.00 ft (KB)
 1443.00 ft (CF)
 KB to GR/CF: 9.00 ft

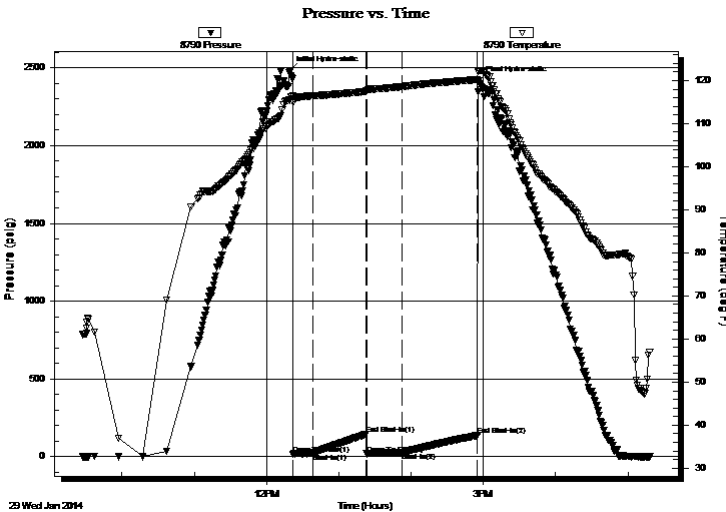
Serial #: 8790

Inside

Press@RunDepth: 24.01 psig @ 4820.00 ft (KB) Capacity: 8000.00 psig
 Start Date: 2014.01.29 End Date: 2014.01.29 Last Calib.: 2014.01.29
 Start Time: 09:27:21 End Time: 17:18:00 Time On Btm: 2014.01.29 @ 12:19:16
 Time Off Btm: 2014.01.29 @ 14:56:16

TEST COMMENT: IF: Weak blow . surf. - 1"
 IS: No blow
 FF: Fair blow . 1" - 3 1/2"
 FS: No blow

PRESSURE SUMMARY



Time (Min.)	Pressure (psig)	Temp (deg F)	Annotation
0	2484.71	115.62	Initial Hydro-static
3	14.84	114.96	Open To Flow (1)
19	19.48	116.44	Shut-In(1)
64	141.85	117.44	End Shut-In(1)
64	16.50	117.59	Open To Flow (2)
94	24.01	118.59	Shut-In(2)
156	134.96	120.24	End Shut-In(2)
157	2417.02	122.29	Final Hydro-static

Recovery

Length (ft)	Description	Volume (bbl)
10.00	SLI OCM trc%oil, 99%mud	0.05
0.00	170' GIP	0.00

Gas Rates

	Choke (inches)	Pressure (psig)	Gas Rate (m ³ /d)



**TRILOBITE
TESTING, INC**

DRILL STEM TEST REPORT

FLUID SUMMARY

Herman L. Loeb, LLC.
P.O. Box 838
Lawrenceville, IL 62439
ATTN: Jim Hall

4-35s.-12w. Barber Co.
School Trust 21-4
Job Ticket: 51870 **DST#: 1**
Test Start: 2014.01.29 @ 09:27:16

Mud and Cushion Information

Mud Type: Gel Chem	Cushion Type:	Oil API:	deg API
Mud Weight: 9.00 lb/gal	Cushion Length: ft	Water Salinity:	4000 ppm
Viscosity: 58.00 sec/qt	Cushion Volume: bbl		
Water Loss: 8.79 in ³	Gas Cushion Type:		
Resistivity: ohm.m	Gas Cushion Pressure: psig		
Salinity: 5000.00 ppm			
Filter Cake: 0.02 inches			

Recovery Information

Recovery Table

Length ft	Description	Volume bbl
10.00	SLI OCM trc%oil, 99%mud	0.049
0.00	170' GIP	0.000

Total Length: 10.00 ft Total Volume: 0.049 bbl
 Num Fluid Samples: 0 Num Gas Bombs: 0 Serial #: none
 Laboratory Name: Laboratory Location:
 Recovery Comments:

