



TRILOBITE TESTING, INC.

DRILL STEM TEST REPORT

Herman L. Loeb, LLC.
 P.O. Box 838
 Lawrenceville, IL 62439
 ATTN: Jon Christensen

5-35s-12w Barber Co.
School Trust 22-5
 Job Ticket: 51956 **DST#: 2**
 Test Start: 2014.02.15 @ 08:18:03

GENERAL INFORMATION:

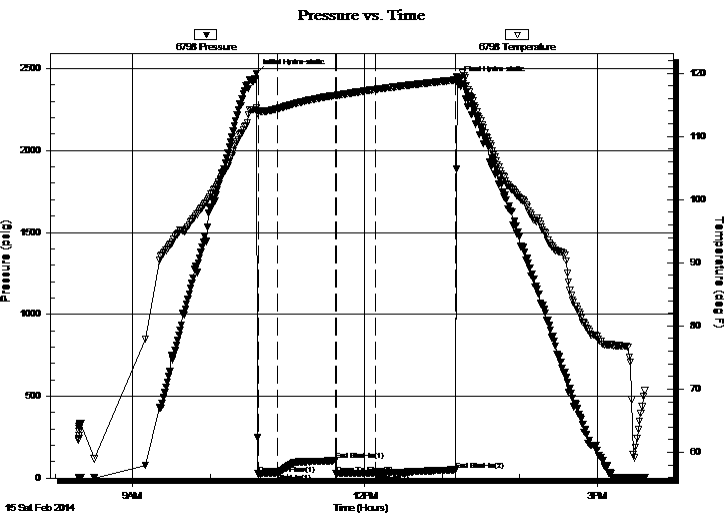
Formation: **Mississippi Lime**
 Deviated: No Whipstock: 0.00 ft (KB)
 Time Tool Opened: 10:37:03
 Time Test Ended: 15:37:18
 Interval: **4870.00 ft (KB) To 4925.00 ft (KB) (TVD)**
 Total Depth: 4925.00 ft (KB) (TVD)
 Hole Diameter: 7.88 inches Hole Condition: Good
 Test Type: Conventional Bottom Hole (Reset)
 Tester: Leal Cason
 Unit No: 74
 Reference Elevations: 1477.00 ft (KB)
 1468.00 ft (CF)
 KB to GR/CF: 9.00 ft

Serial #: 6798

Inside

Press @ Run Depth: 30.06 psig @ 4871.00 ft (KB) Capacity: 8000.00 psig
 Start Date: 2014.02.15 End Date: 2014.02.15 Last Calib.: 2014.02.15
 Start Time: 08:18:04 End Time: 15:37:18 Time On Btm: 2014.02.15 @ 10:35:48
 Time Off Btm: 2014.02.15 @ 13:11:18

TEST COMMENT: IF: Weak Blow , Built to 2 1/2 inches
 IS: No Blow Back
 FF: Weak 2 inch Blow
 IS: No Blow Back



PRESSURE SUMMARY

Time (Min.)	Pressure (psig)	Temp (deg F)	Annotation
0	2471.15	114.46	Initial Hydro-static
2	25.01	114.12	Open To Flow (1)
17	28.70	114.37	Shut-In(1)
61	107.06	116.47	End Shut-In(1)
62	25.29	116.46	Open To Flow (2)
93	30.06	117.43	Shut-In(2)
155	50.87	118.91	End Shut-In(2)
156	2428.95	119.34	Final Hydro-static

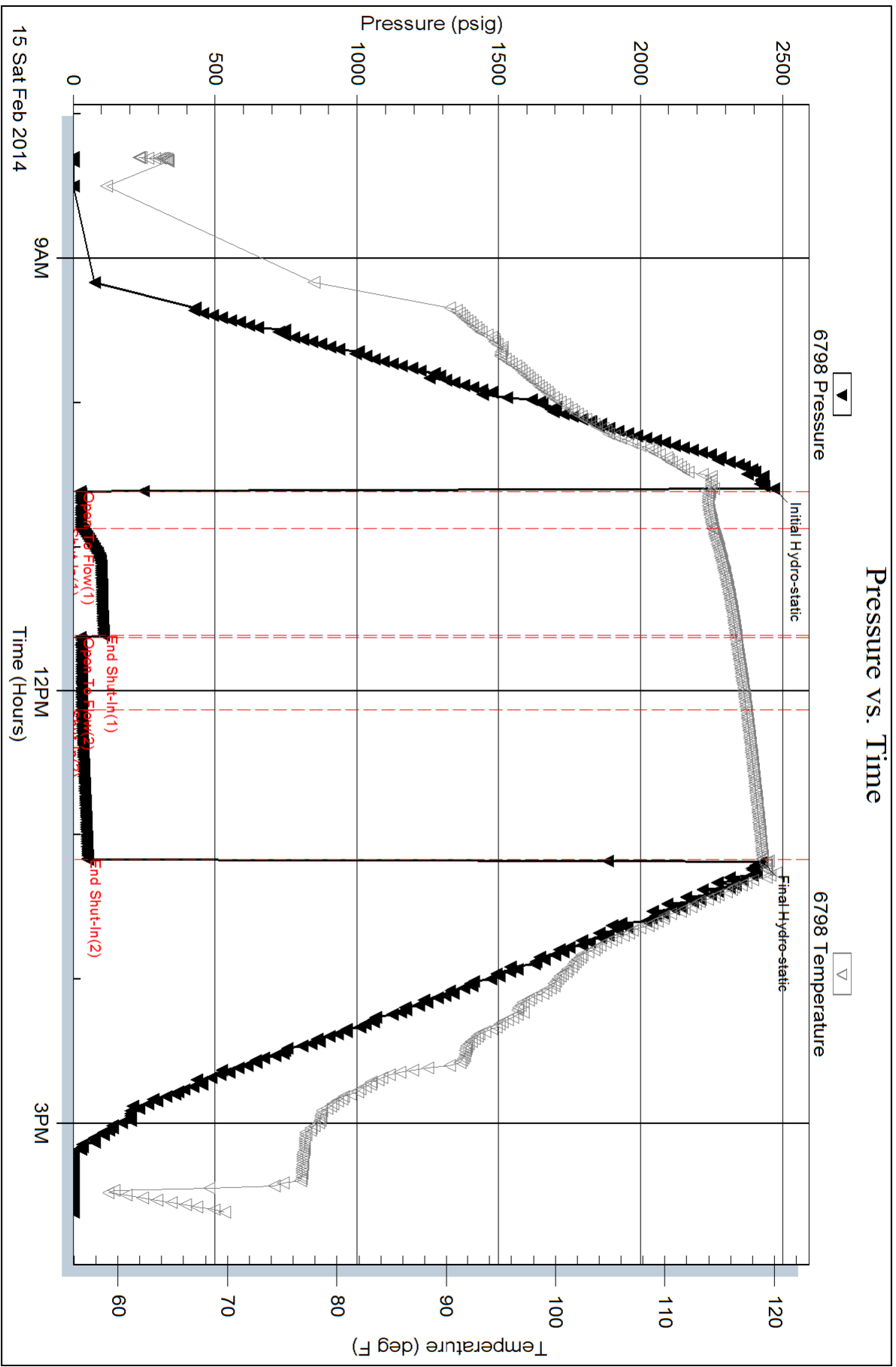
Recovery

Length (ft)	Description	Volume (bbl)
10.00	SGCM 2%G 98%M	0.05

* Recovery from multiple tests

Gas Rates

Choke (inches)	Pressure (psig)	Gas Rate (m ³ /d)



Serial #: 8367

Outside Herrman L. Loeb, LLC.

School Trust 22-5

DST Test Number: 2

