



TRILOBITE TESTING, INC.

DRILL STEM TEST REPORT

Herman L. Loeb, LLC.
 P.O. Box 838
 Lawrenceville, IL 62439
 ATTN: Jon Christensen

5-35s-12w Barber Co.
School Trust 22-5
 Job Ticket: 51958 **DST#: 4**
 Test Start: 2014.02.17 @ 18:03:17

GENERAL INFORMATION:

Formation: **Misener**
 Deviated: No Whipstock: 0.00 ft (KB)
 Time Tool Opened: 20:58:02
 Time Test Ended: 03:10:32
 Interval: **5261.00 ft (KB) To 5275.00 ft (KB) (TVD)**
 Total Depth: 5275.00 ft (KB) (TVD)
 Hole Diameter: 7.88 inches Hole Condition: Good
 Test Type: Conventional Bottom Hole (Reset)
 Tester: Leal Cason
 Unit No: 74
 Reference Elevations: 1477.00 ft (KB)
 1468.00 ft (CF)
 KB to GR/CF: 9.00 ft

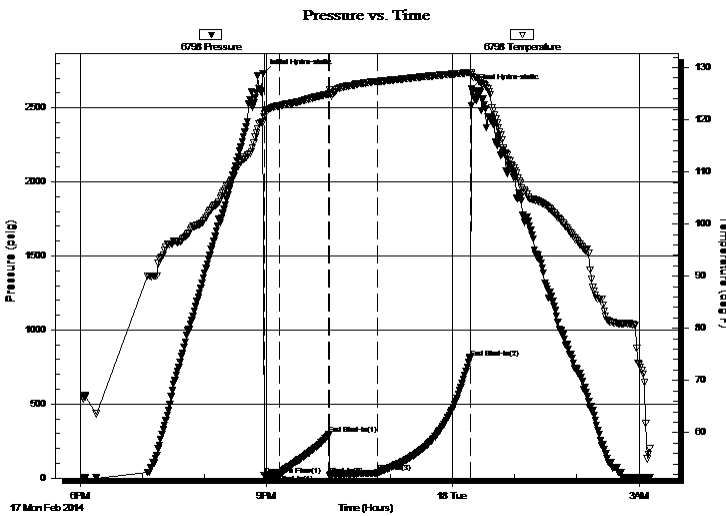
Serial #: 6798

Inside

Press @ Run Depth: 27.97 psig @ 5262.00 ft (KB) Capacity: 8000.00 psig
 Start Date: 2014.02.17 End Date: 2014.02.18 Last Calib.: 2014.02.18
 Start Time: 18:03:18 End Time: 03:10:32 Time On Btm: 2014.02.17 @ 20:56:32
 Time Off Btm: 2014.02.18 @ 00:18:17

TEST COMMENT: IF: Fair Blow , Built to 9 1/2 inches
 IS: No Blow Back
 FF: Fair Blow , Built to 5 1/2 inches
 FS: No Blow Back

PRESSURE SUMMARY



Time (Min.)	Pressure (psig)	Temp (deg F)	Annotation
0	2733.46	119.52	Initial Hydro-static
2	18.05	121.23	Open To Flow (1)
17	27.97	122.64	Shut-In(1)
64	293.76	124.91	End Shut-In(1)
65	17.96	125.67	Shut-In(2)
111	36.23	127.31	Shut-In(3)
201	814.09	129.07	End Shut-In(2)
202	2627.29	128.62	Final Hydro-static

Recovery

Gas Rates

Length (ft)	Description	Volume (bbl)
0.00	178 GIP	0.00
40.00	OCM 30%O 70%M	0.20

	Choke (inches)	Pressure (psig)	Gas Rate (m ³ /d)

* Recovery from multiple tests



**TRILOBITE
TESTING, INC.**

DRILL STEM TEST REPORT

FLUID SUMMARY

Herman L. Loeb, LLC.
P.O. Box 838
Lawrenceville, IL 62439
ATTN: Jon Christensen

5-35s-12w Barber Co.
School Trust 22-5
Job Ticket: 51958 **DST#: 4**
Test Start: 2014.02.17 @ 18:03:17

Mud and Cushion Information

Mud Type: Gel Chem	Cushion Type:	Oil API:	deg API
Mud Weight: 9.00 lb/gal	Cushion Length: ft	Water Salinity:	ppm
Viscosity: 54.00 sec/qt	Cushion Volume: bbl		
Water Loss: 9.17 in ³	Gas Cushion Type:		
Resistivity: ohm.m	Gas Cushion Pressure: psig		
Salinity: 5000.00 ppm			
Filter Cake: 0.02 inches			

Recovery Information

Recovery Table

Length ft	Description	Volume bbl
0.00	178 GIP	0.000
40.00	OCM 30%O 70%M	0.197

Total Length: 40.00 ft Total Volume: 0.197 bbl
 Num Fluid Samples: 0 Num Gas Bombs: 0 Serial #:
 Laboratory Name: Laboratory Location:
 Recovery Comments:

