



DRILL STEM TEST REPORT

Prepared For: **H&B Petroleum Corp**

PO Box 277
Ellinwood KS 67526-0277

ATTN: Al Hammersmith / Jim

Mount Trust #1

3-22s-15w Pawnee,KS

Start Date: 2013.11.15 @ 05:10:13

End Date: 2013.11.15 @ 11:52:07

Job Ticket #: 54371 DST #: 1

Trilobite Testing, Inc

PO Box 362 Hays, KS 67601

ph: 785-625-4778 fax: 785-625-5620

Printed: 2013.11.19 @ 13:10:57

H&B Petroleum Corp

3-22s-15w Pawnee,KS

Mount Trust #1

DST # 1

LKC H-J

2013.11.15



**TRILOBITE
TESTING, INC**

DRILL STEM TEST REPORT

H&B Petroleum Corp

3-22s-15w Pawnee,KS

PO Box 277
Ellinwood KS 67526-0277

Mount Trust #1

Job Ticket: 54371

DST#: 1

ATTN: Al Hammersmith / Jim

Test Start: 2013.11.15 @ 05:10:13

GENERAL INFORMATION:

Formation: **LKC H-J**

Deviated: No Whipstock: ft (KB)

Time Tool Opened: 07:31:08

Time Test Ended: 11:52:07

Test Type: Conventional Bottom Hole (Initial)

Tester: Ray Schwager

Unit No: 70

Interval: 3643.00 ft (KB) To 3686.00 ft (KB) (TVD)

Reference Elevations: 1984.00 ft (KB)

Total Depth: 3686.00 ft (KB) (TVD)

1972.00 ft (CF)

Hole Diameter: 7.85 inches Hole Condition: Fair

KB to GR/CF: 12.00 ft

Serial #: 8369

Inside

Press@RunDepth: 50.24 psig @ 3650.00 ft (KB)

Capacity: 8000.00 psig

Start Date: 2013.11.15 End Date: 2013.11.15

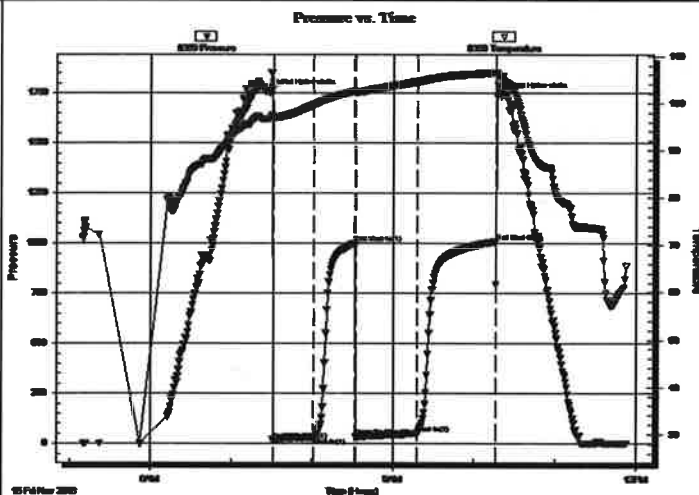
Last Calib.: 2013.10.15

Start Time: 05:10:13 End Time: 11:52:07

Time On Btm: 2013.11.15 @ 07:28:38

Time Off Btm: 2013.11.15 @ 10:20:07

TEST COMMENT: 30-IFP-w k bl thru-out 1/4" to 2 1/4" bl
30-ISIP-no bl
45-FFP-w k bl thru-out surface to 1 1/2" bl
60-FSIP-no bl



PRESSURE SUMMARY

Time (Min.)	Pressure (psig)	Temp (deg F)	Annotation
0	1752.85	96.77	Initial Hydro-static
3	17.54	96.81	Open To Flow (1)
33	32.10	99.64	Shut-In(1)
63	1001.19	102.50	End Shut-In(1)
64	35.30	102.30	Open To Flow (2)
109	50.24	104.68	Shut-In(2)
168	1009.57	106.53	End Shut-In(2)
172	1733.80	105.74	Final Hydro-static

Recovery

Length (ft)	Description	Volume (bbl)
2.00	CO	0.03
20.00	OCM 10%O90%M	0.28
50.00	SOCMW 2%O30%M68%W	0.70

Gas Rates

	Choke (inches)	Pressure (psig)	Gas Rate (Mcf/d)



**TRILOBITE
TESTING, INC.**

DRILL STEM TEST REPORT

TOOL DIAGRAM

H&B Petroleum Corp

3-22s-15w Pawnee,KS

PO Box 277
Ellinwood KS 67526-0277

Mount Trust #1

Job Ticket: 54371

DST#: 1

ATTN: Al Hammersmith / Jim

Test Start: 2013.11.15 @ 05:10:13

Tool Information

Drill Pipe:	Length: 3630.00 ft	Diameter: 3.80 inches	Volume: 50.92 bbl	Tool Weight: 2200.00 lb
Heavy Wt. Pipe:	Length: 0.00 ft	Diameter: 0.00 inches	Volume: 0.00 bbl	Weight set on Packer: 25000.00 lb
Drill Collar:	Length: 0.00 ft	Diameter: 0.00 inches	Volume: 0.00 bbl	Weight to Pull Loose: 55000.00 lb
			<u>Total Volume: 50.92 bbl</u>	Tool Chased 0.00 ft
Drill Pipe Above KB:	8.00 ft			String Weight: Initial 40000.00 lb
Depth to Top Packer:	3643.00 ft			Final 40000.00 lb
Depth to Bottom Packer:	ft			
Interval between Packers:	43.00 ft			
Tool Length:	64.00 ft			
Number of Packers:	2	Diameter: 6.75 inches		

Tool Comments:

Tool Description	Length (ft)	Serial No.	Position	Depth (ft)	Accum. Lengths
------------------	-------------	------------	----------	------------	----------------

Change Over Sub	1.00			3623.00	
Shut In Tool	5.00			3628.00	
Hydraulic tool	5.00			3633.00	
Packer	5.00			3638.00	21.00 Bottom Of Top Packer
Packer	5.00			3643.00	
Stubb	1.00			3644.00	
Perforations	6.00			3650.00	
Recorder	0.00	8369	Inside	3650.00	
Recorder	0.00	8700	Outside	3650.00	
Blank Spacing	33.00			3683.00	
Bullnose	3.00			3686.00	43.00 Bottom Packers & Anchor

Total Tool Length: 64.00



**TRILOBITE
TESTING, INC**

DRILL STEM TEST REPORT

FLUID SUMMARY

H&B Petroleum Corp

3-22s-15w Pawnee, KS

PO Box 277
Ellinwood KS 67526-0277

Mount Trust #1

Job Ticket: 54371

DST#: 1

ATTN: Al Hammersmith / Jim

Test Start: 2013.11.15 @ 05:10:13

Mud and Cushion Information

Mud Type: Gel Chem

Cushion Type:

Oil API:

deg API

Mud Weight: 9.00 lb/gal

Cushion Length:

ft

Water Salinity:

83000 ppm

Viscosity: 53.00 sec/qt

Cushion Volume:

bbbl

Water Loss: 7.17 in³

Gas Cushion Type:

Resistivity: ohm.m

Gas Cushion Pressure:

psig

Salinity: 1200.00 ppm

Filter Cake: 1.00 inches

Recovery Information

Recovery Table

Length ft	Description	Volume bbl
2.00	CO	0.028
20.00	OCM 10%O90%M	0.281
50.00	SOCMV 2%O30%M68%W	0.701

Total Length: 72.00 ft

Total Volume: 1.010 bbl

Num Fluid Samples: 0

Num Gas Bombs: 0

Serial #:

Laboratory Name:

Laboratory Location:

Recovery Comments: RW .1@65F

Serial #: 8369

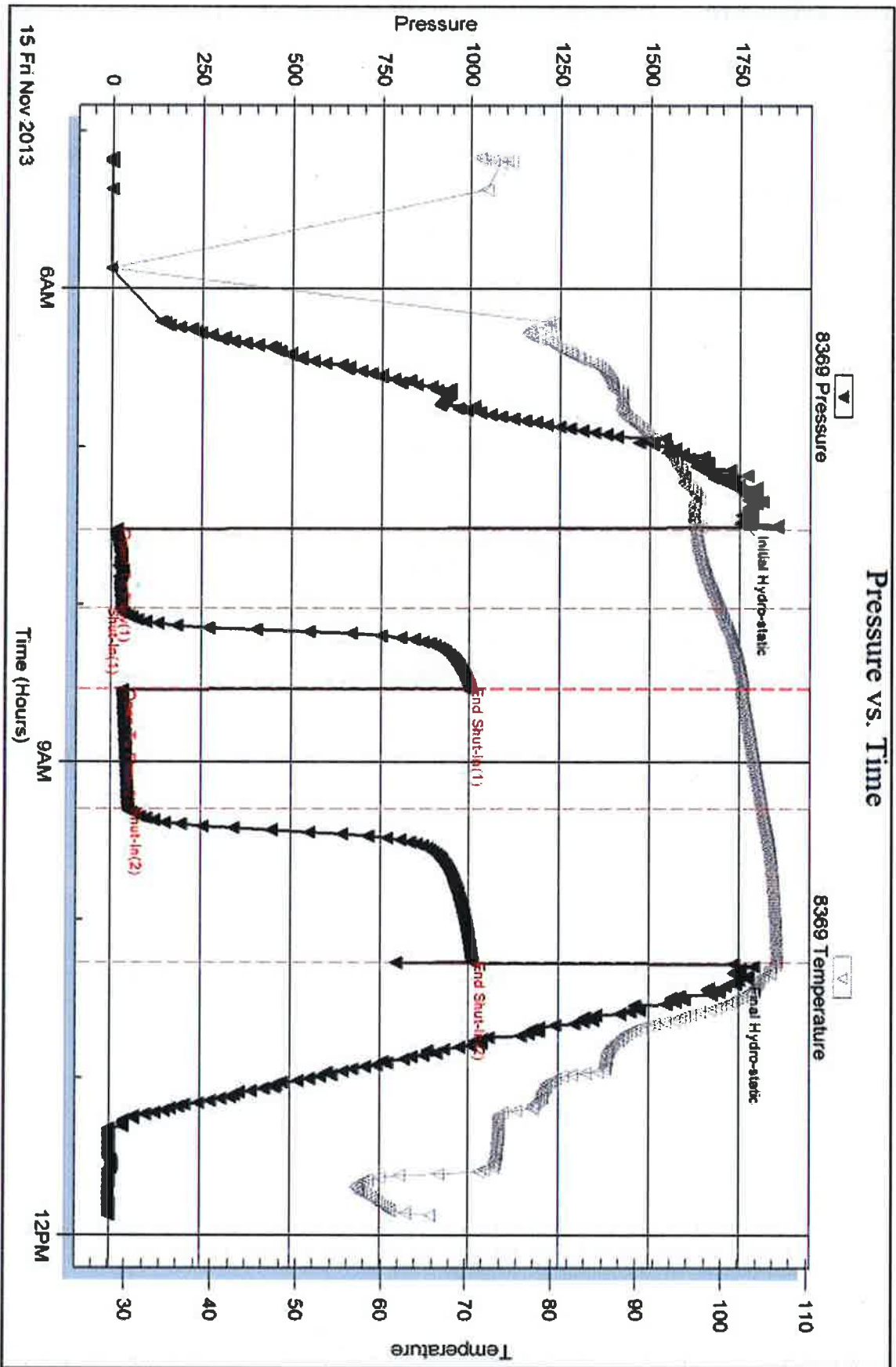
Inside

H&B Petroleum Corp

Mount Trust #1

DST Test Number: 1

Pressure vs. Time



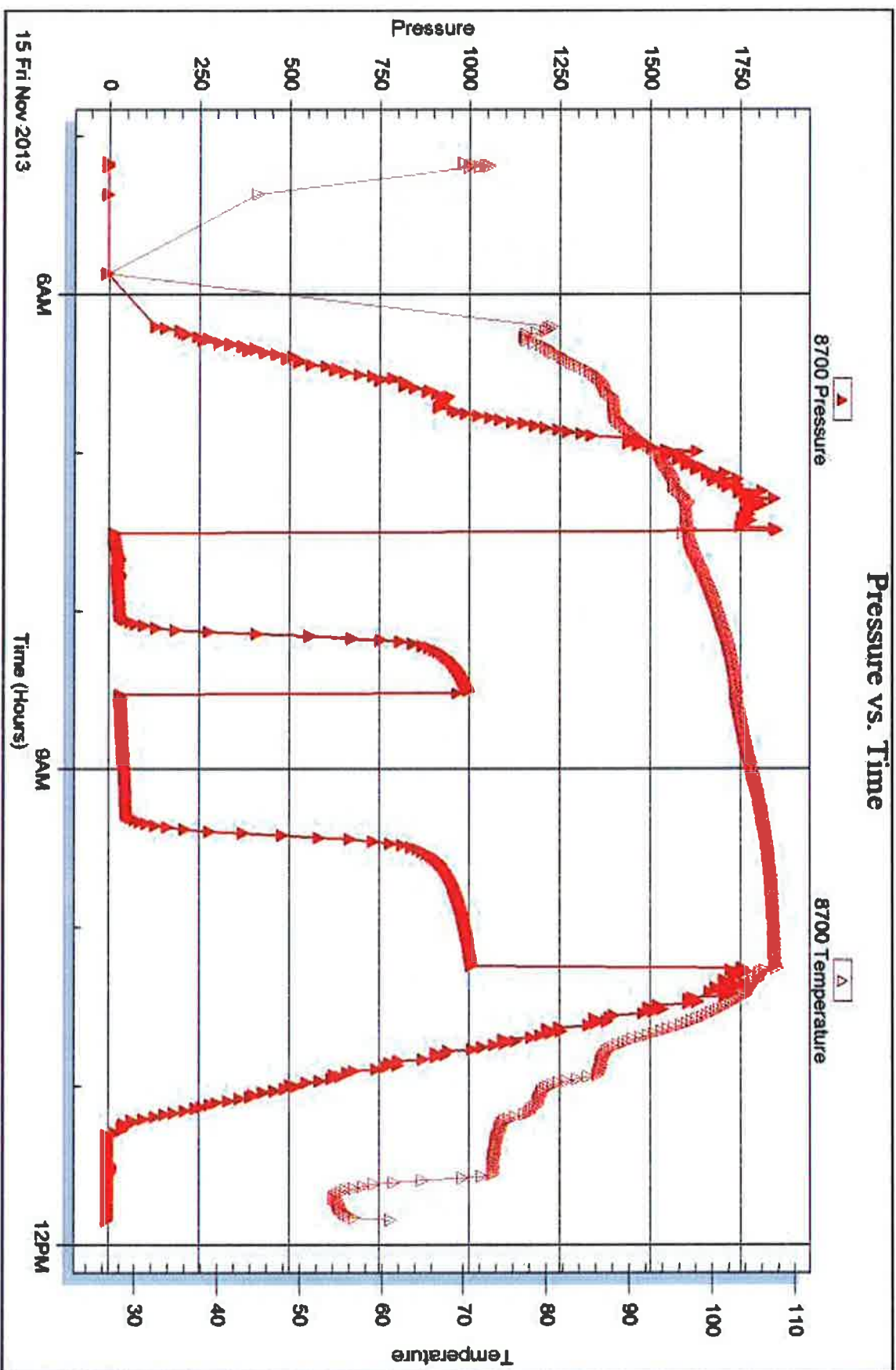
Serial #: 8700

Outside H&B Petroleum Corp

Mount Trust #1

DST Test Number: 1

Pressure vs. Time



Triobite Testing, Inc

Ref. No: 54371

Printed: 2013.11.19 @ 13:11:00



DRILL STEM TEST REPORT

Prepared For: **H&B Petroleum Corp**

PO Box 277
Ellinwood KS 67526-0277

ATTN: Al Hammersmith / Jim

Mount Trust #1

3-22s-15w Pawnee,KS

Start Date: 2013.10.16 @ 13:35:20

End Date: 2013.10.16 @ 23:19:30

Job Ticket #: 54372 DST #: 2

Trilobite Testing, Inc

PO Box 362 Hays, KS 67601

ph: 785-625-4778 fax: 785-625-5620

Printed: 2013.11.19 @ 13:10:08

H&B Petroleum Corp

3-22s-15w Pawnee,KS

Mount Trust #1

DST # 2

Arbuckle

2013.10.16



**TRILOBITE
TESTING, INC.**

DRILL STEM TEST REPORT

H&B Petroleum Corp

3-22s-15w Pawnee, KS

PO Box 277
Ellinwood KS 67526-0277

Mount Trust #1

Job Ticket: 54372

DST#: 2

ATTN: Al Hammersmith / Jim

Test Start: 2013.10.16 @ 13:35:20

GENERAL INFORMATION:

Formation: **Arbuckle**

Deviated: No Whipstock: ft (KB)

Time Tool Opened: 15:19:00

Time Test Ended: 23:19:30

Test Type: Conventional Bottom Hole (Reset)

Tester: Ray Schwager

Unit No: 70

Interval: **3860.00 ft (KB) To 3938.00 ft (KB) (TVD)**

Total Depth: 3938.00 ft (KB) (TVD)

Hole Diameter: 7.85 inches Hole Condition: Fair

Reference Elevations: 1984.00 ft (KB)

1972.00 ft (CF)

KB to GR/CF: 12.00 ft

Serial #: 8369 Inside

Press@RunDepth: 1000.12 psig @ 3871.00 ft (KB)

Start Date: 2013.10.16

End Date: 2013.10.16

Start Time: 13:35:20

End Time: 23:19:30

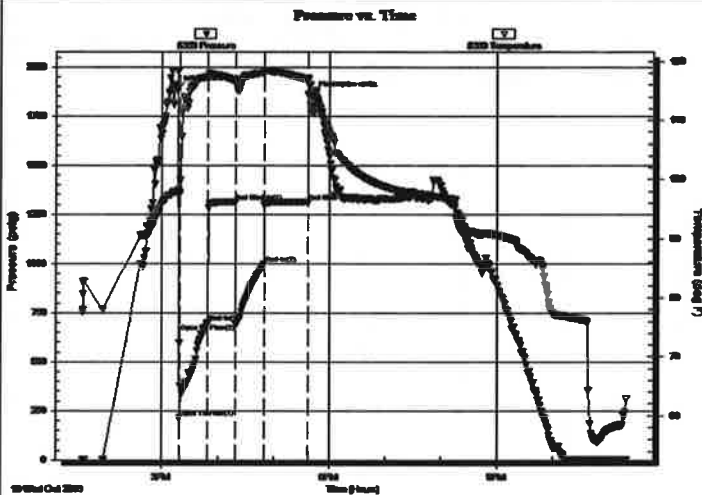
Capacity: 8000.00 psig

Last Calib.: 2013.10.16

Time On Btm: 2013.10.16 @ 15:16:00

Time Off Btm: 2013.10.16 @ 17:41:00

TEST COMMENT: 30-IFP-strg bl in 1 min
30-ISIP-8"bl bk
30-FFP-strg bl , GTS in 35 min
45-FSIP-Gd Bl Bk



PRESSURE SUMMARY

Time (Min.)	Pressure (psig)	Temp (deg F)	Annotation
0	1885.86	97.86	Initial Hydro-static
3	216.09	97.74	Open To Flow (1)
34	697.80	117.31	Shut-In(1)
63	1311.63	116.59	End Shut-In(1)
63	693.66	116.30	Open To Flow (2)
94	1000.12	118.06	Shut-In(2)
142	1312.66	116.91	End Shut-In(2)
145	1855.90	111.35	Final Hydro-static

Recovery

Length (ft)	Description	Volume (bbl)
2880.00	CO	40.40
90.00	VHO&GCM 10%G40%O50%M	1.26
30.00	O&GCMW 10%G10%O10%M70%W	0.42

* Recovery from multiple tests

Gas Rates

	Choke (inches)	Pressure (psig)	Gas Rate (Mcf/d)



**TRILOBITE
TESTING, INC.**

DRILL STEM TEST REPORT

TOOL DIAGRAM

H&B Petroleum Corp

3-22s-15w Pawnee,KS

PO Box 277
Ellinwood KS 67526-0277

Mount Trust #1

Job Ticket: 54372

DST#: 2

ATTN: Al Hammersmith / Jim

Test Start: 2013.10.16 @ 13:35:20

Tool Information

Drill Pipe:	Length: 3851.00 ft	Diameter: 3.80 inches	Volume: 54.02 bbl	Tool Weight: 2200.00 lb
Heavy Wt. Pipe:	Length: 0.00 ft	Diameter: 0.00 inches	Volume: 0.00 bbl	Weight set on Packer: 25000.00 lb
Drill Collar:	Length: 0.00 ft	Diameter: 0.00 inches	Volume: 0.00 bbl	Weight to Pull Loose: 65000.00 lb
			<u>Total Volume: 54.02 bbl</u>	Tool Chased 0.00 ft
Drill Pipe Above KB:	12.00 ft			String Weight: Initial 46000.00 lb
Depth to Top Packer:	3860.00 ft			Final 57000.00 lb
Depth to Bottom Packer:	ft			
Interval between Packers:	78.00 ft			
Tool Length:	99.00 ft			
Number of Packers:	2	Diameter: 6.75 inches		

Tool Comments:

Tool Description	Length (ft)	Serial No.	Position	Depth (ft)	Accum. Lengths
Change Over Sub	1.00			3840.00	
Shut In Tool	5.00			3845.00	
Hydraulic tool	5.00			3850.00	
Packer	5.00			3855.00	21.00 Bottom Of Top Packer
Packer	5.00			3860.00	
Stubb	1.00			3861.00	
Perforations	10.00			3871.00	
Recorder	0.00	8369	Inside	3871.00	
Recorder	0.00	8700	Outside	3871.00	
Blank Spacing	64.00			3935.00	
Bullnose	3.00			3938.00	78.00 Bottom Packers & Anchor

Total Tool Length: 99.00



**TRILOBITE
TESTING, INC**

DRILL STEM TEST REPORT

FLUID SUMMARY

H&B Petroleum Corp

3-22s-15w Pawnee,KS

PO Box 277
Ellinwood KS 67526-0277

Mount Trust #1

Job Ticket: 54372

DST#: 2

ATTN: Al Hammersmith / Jim

Test Start: 2013.10.16 @ 13:35:20

Mud and Cushion Information

Mud Type: Gel Chem

Cushion Type:

Oil API:

deg API

Mud Weight: 9.00 lb/gal

Cushion Length:

ft

Water Salinity:

13000 ppm

Viscosity: 54.00 sec/qt

Cushion Volume:

bbbl

Water Loss: 9.55 in³

Gas Cushion Type:

Resistivity: ohm.m

Gas Cushion Pressure:

psig

Salinity: 5000.00 ppm

Filter Cake: 1.00 inches

Recovery Information

Recovery Table

Length ft	Description	Volume bbl
2880.00	CO	40.399
90.00	VHO&GCM 10%G40%O50%M	1.262
30.00	O&GCMW 10%G10%O10%M70%W	0.421

Total Length: 3000.00 ft

Total Volume: 42.082 bbl

Num Fluid Samples: 0

Num Gas Bombs: 0

Serial #:

Laboratory Name:

Laboratory Location:

Recovery Comments: RW .61@55F

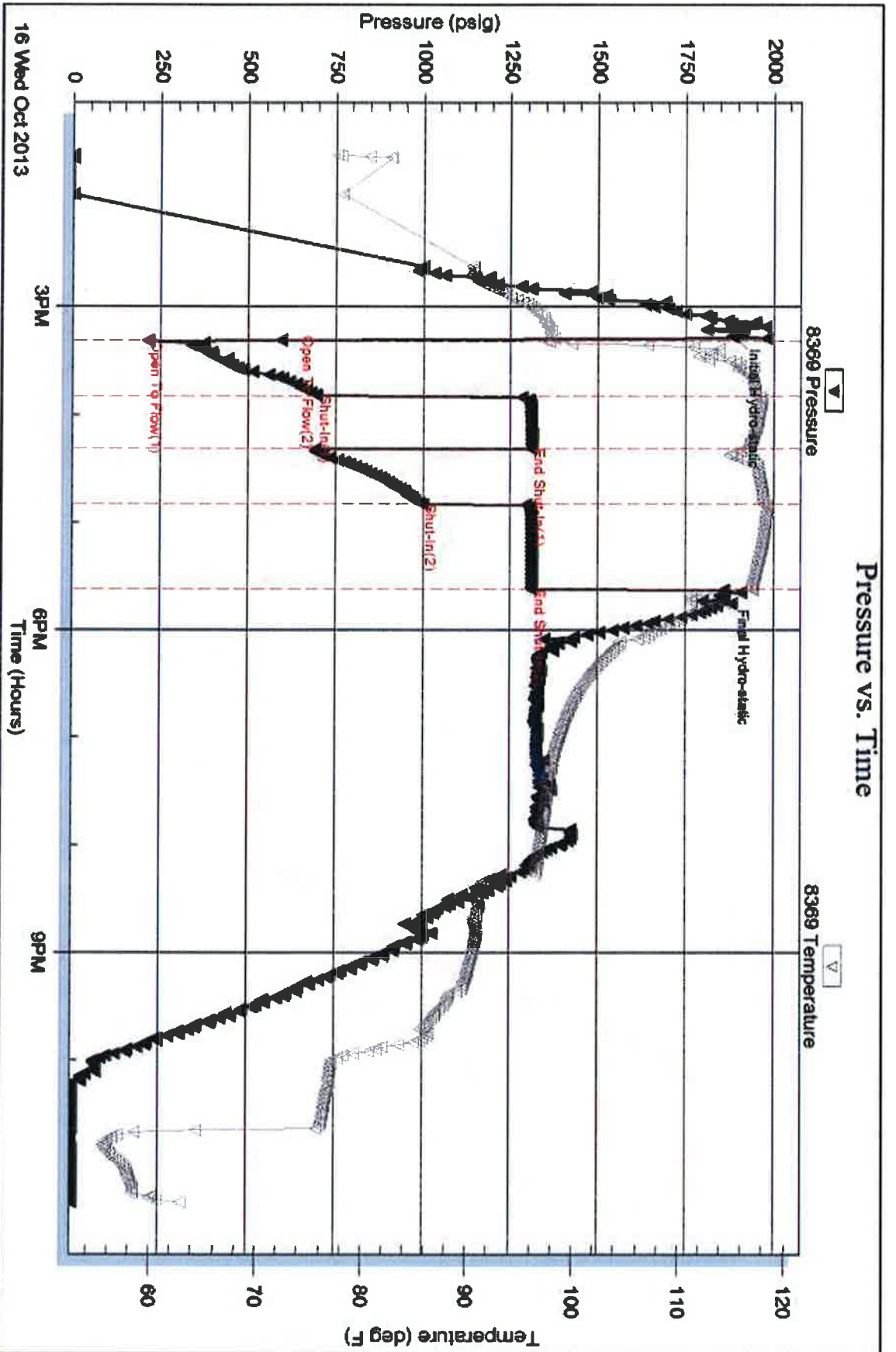
Serial #: 8369

Inside

H&B Petroleum Corp.

Mount Trust #1

DST Test Number: 2



Triobase Testing, Inc

Ref. No: 54372

Printed: 2013.11.19 @ 13:10:10

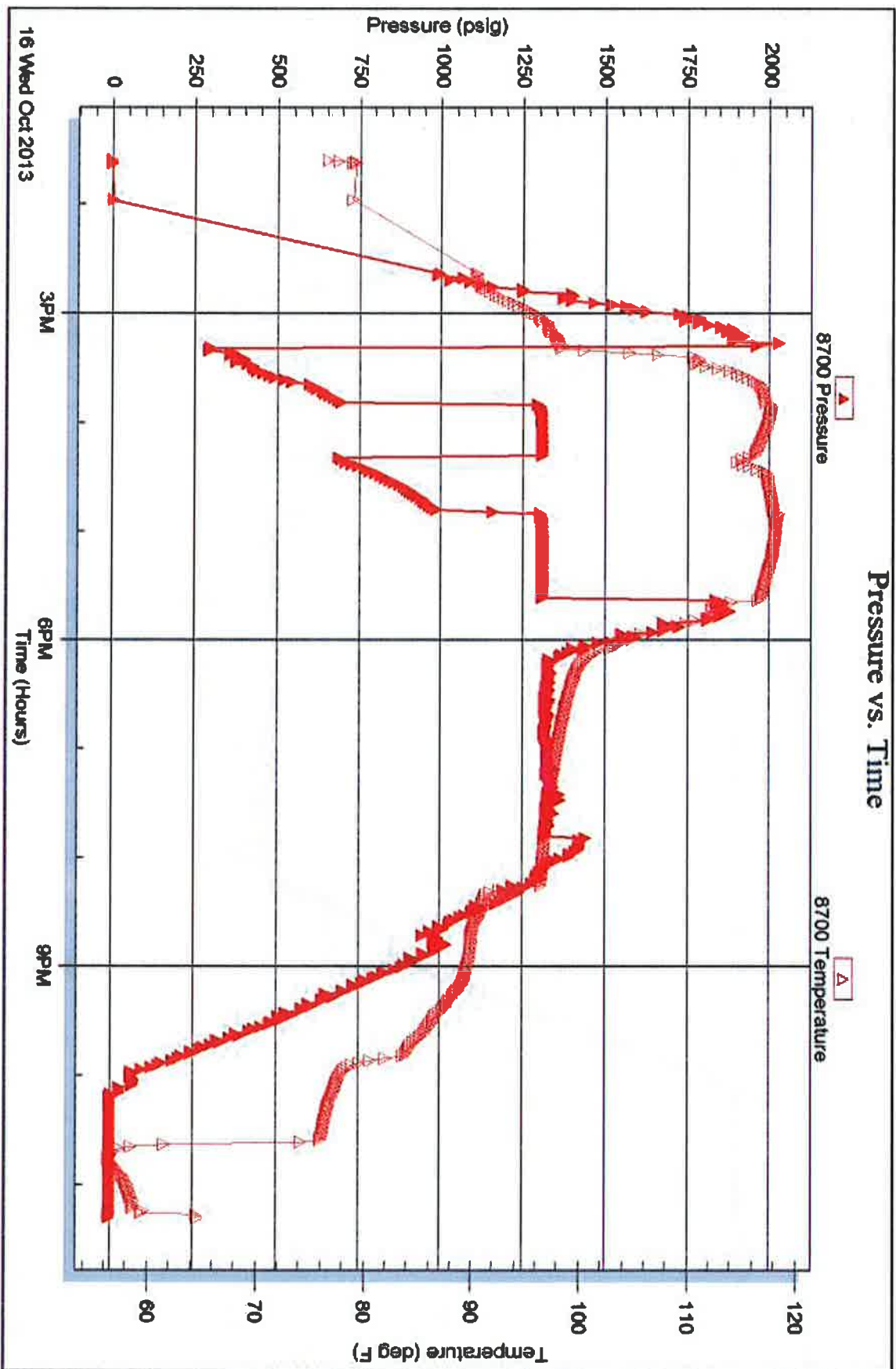
Serial #: 8700

Outside

H&B Petroleum Corp.

Mount Trust #1

DST Test Number: 2





TRILOBITE TESTING INC.

1515 Commerce Parkway • Hays, Kansas 67601

Test Ticket

NO. 54371

Well Name & No. Mount Trust #1 Test No. 1 Date 11-15-13
 Company H+B Petroleum Corp Elevation 1984 KB 1972 GL
 Address PO Box 277 Ellinwood, KS 67526-0277
 Co. Rep / Geo. Jim Musgrove Rig Southwind rig 70
 Location: Sec. 3 Twp. 22^s Rge. 15^w Co. Pawnee State Ks

Interval Tested 3643-3686 Zone Tested LKC
 Anchor Length 43 Drill Pipe Run 3630 Mud Wt. 9.1
 Top Packer Depth 3638 Drill Collars Run - Vis 53
 Bottom Packer Depth 3643 Wt. Pipe Run - WL 7.2
 Total Depth 3686 Chlorides 1200 ppm System LCM 1 #

Blow Description TFP - Weak Blow thru-out 1/4" to 2/4" Blow
ISIP - NO Blow
FFP - Weak Blow thru-out surface to 1/2" Blow
FSIP - NO Blow

Rec	Feet of	%gas	%oil	%water	%mud
<u>2</u>	<u>CO</u>				
<u>20</u>	<u>OCM</u>		<u>10</u>		<u>90</u>
<u>50</u>	<u>SOCMW</u>		<u>2</u>	<u>68</u>	<u>30</u>
Rec	Feet of	%gas	%oil	%water	%mud
Rec	Feet of	%gas	%oil	%water	%mud

Rec Total 72 BHT 106 Gravity - API RW .1 @ 65 °F Chlorides 83000 ppm

(A) Initial Hydrostatic 1752 Test 1150 T-On Location 0000
 (B) First Initial Flow 17 Jars - T-Started 0510
 (C) First Final Flow 32 Safety Joint - T-Open 0730
 (D) Initial Shut-In 1001 Circ Sub - T-Pulled 1015
 (E) Second Initial Flow 35 Hourly Standby - T-Out 1152
 (F) Second Final Flow 50 Mileage 142 RT 220.10 Comments -
 (G) Final Shut-In 1009 Sampler -
 (H) Final Hydrostatic 1733 Straddle - Ruined Shale Packer -
 Shale Packer - Ruined Packer -
 Extra Packer - Extra Copies -

Initial Open 30
 Initial Shut-In 30
 Final Flow 45
 Final Shut-In 60
 Sub Total 0
 Total 1370.10
 MP/DST Disc't -
 Sub Total 1370.10

Approved By _____ Our Representative Ray Schwager Thank you

Trilobite Testing Inc. shall not be liable for damaged of any kind of the property or personnel of the one for whom a test is made, or for any loss suffered or sustained, directly or indirectly, through the use of its equipment, or its statements or opinion concerning the results of any test, tools lost or damaged in the hole shall be paid for at cost by the party for whom the test is made.



TRILOBITE TESTING INC.

1515 Commerce Parkway • Hays, Kansas 67601

Test Ticket

NO. 54372

Well Name & No. Mount Trust #1 Test No. 2 Date 11-16-13
 Company H+B Petroleum Corp Elevation 1984 KB 1972 GL
 Address PO Box 277 Ellinwood, Ko 67526-0277
 Co. Rep / Geo. Jim Musgrove Rig Southwind rig 70
 Location: Sec. 3 Twp. 22^s Rge. 15^w Co. Pawnee State Ks

Interval Tested 3860-3938 Zone Tested Arbuckle
 Anchor Length 78 Drill Pipe Run 3851 Mud Wt. 9.2
 Top Packer Depth 3855 Drill Collars Run - Vis 54
 Bottom Packer Depth 3860 Wt. Pipe Run - WL 9.6
 Total Depth 3938 Chlorides 5000 ppm System LCM 2#

Blow Description IFP - Strong Blow in 1 min
ISIP - 8" Blow Back
FFP - Strong Blow, GTS in 35 min, no gauge
FSIP - Good Blow Back

Rec	Feet of	%gas	%oil	%water	%mud
<u>2880</u>	<u>Co</u>				
<u>90</u>	<u>VH+GCM</u>	<u>10</u>	<u>40</u>	<u>50</u>	<u>50</u>
<u>30</u>	<u>0+GCMW</u>	<u>10</u>	<u>10</u>	<u>70</u>	<u>10</u>

Rec Total 3000 BHT 117 Gravity 53+ API RW .61 @ 55 °F Chlorides 13000 ppm

(A) Initial Hydrostatic 1885 Test 1150 T-On Location 1200
 (B) First Initial Flow 216 Jars T-Started 1335
 (C) First Final Flow 697 Safety Joint T-Open 1520
 (D) Initial Shut-In 1311 Circ Sub T-Pulled 1735
 (E) Second Initial Flow 693 Hourly Standby T-Out 2319
 (F) Second Final Flow 1000 Mileage 220.10 Comments
 (G) Final Shut-In 1312 Sampler
 (H) Final Hydrostatic 1855 Straddle Ruined Shale Packer

Initial Open 30 Extra Packer Extra Copies
 Initial Shut-In 30 Extra Recorder Sub Total 0
 Final Flow 30 Day Standby Total 1370.10
 Final Shut-In 45 Accessibility MP/DST Disc't
 Sub Total 1370.10

Approved By _____ Our Representative Ray Schwager Thank you

TriLOBite Testing Inc. shall not be liable for damaged of any kind of the property or personnel of the one for whom a test is made, or for any loss suffered or sustained, directly or indirectly, through the use of its equipment, or its statements or opinion concerning the results of any test. Tools lost or damaged in the hole shall be paid for at cost by the party for whom the test is made.