

DRILL STEM TEST REPORT

Prepared For: **American Warrior Inc**

PO 399
Garden City KS 67846

ATTN: Wyatt Urban

Amstutz #1-8

8-19s-9w Rice,KS

Start Date: 2013.08.10 @ 18:48:00

End Date: 2013.08.11 @ 00:25:00

Job Ticket #: 50543 DST #: 1

Trilobite Testing, Inc
PO Box 362 Hays, KS 67601
ph: 785-625-4778 fax: 785-625-5620

Printed: 2013.08.12 @ 11:54:06



**TRILOBITE
TESTING, INC**

DRILL STEM TEST REPORT

American Warrior Inc
PO 399
Garden City KS 67846
ATTN: Wyatt Urban

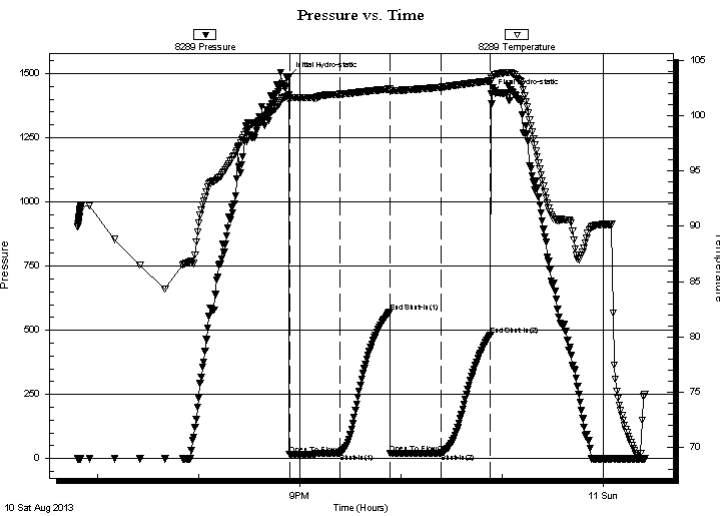
8-19s-9w Rice,KS
Amstutz #1-8
Job Ticket: 50543 **DST#: 1**
Test Start: 2013.08.10 @ 18:48:00

GENERAL INFORMATION:

Formation: **LKC " H - J "**
Deviated: No Whipstock: ft (KB) Test Type: Conventional Bottom Hole (Initial)
Time Tool Opened: 20:53:45 Tester: Jim Svaty
Time Test Ended: 00:25:00 Unit No: 54
Interval: 3052.00 ft (KB) To 3109.00 ft (KB) (TVD) Reference Elevations: 1723.00 ft (KB)
Total Depth: 3109.00 ft (KB) (TVD) 1715.00 ft (CF)
Hole Diameter: 7.88 inches Hole Condition: Fair KB to GR/CF: 8.00 ft

Serial #: 8289 Outside
Press @ RunDepth: 21.26 psig @ 3053.00 ft (KB) Capacity: 8000.00 psig
Start Date: 2013.08.10 End Date: 2013.08.11 Last Calib.: 2013.08.11
Start Time: 18:48:02 End Time: 00:24:45 Time On Btm: 2013.08.10 @ 20:53:30
Time Off Btm: 2013.08.10 @ 22:53:45

TEST COMMENT: 30-IFP- Good Surge on Open No Blow Flushed at 15 min. Very Weak Surface Blow
30-ISIP- No Blow
30-FFP- No Blow
30-FSIP- No Blow



PRESSURE SUMMARY

Time (Min.)	Pressure (psig)	Temp (deg F)	Annotation
0	1487.03	101.88	Initial Hydro-static
1	15.82	101.49	Open To Flow (1)
30	20.32	101.97	Shut-In(1)
60	571.10	102.44	End Shut-In(1)
61	20.61	102.25	Open To Flow (2)
91	21.26	102.60	Shut-In(2)
120	480.50	103.17	End Shut-In(2)
121	1421.37	103.54	Final Hydro-static

Recovery

Length (ft)	Description	Volume (bbl)
15.00	Oil Speck Mud 100%	0.21

Gas Rates

Choke (inches)	Pressure (psig)	Gas Rate (Mcf/d)



TRILOBITE
TESTING, INC

DRILL STEM TEST REPORT

American Warrior Inc
PO 399
Garden City KS 67846
ATTN: Wyatt Urban

8-19s-9w Rice, KS
Amstutz #1-8
Job Ticket: 50543 **DST#: 1**
Test Start: 2013.08.10 @ 18:48:00

GENERAL INFORMATION:

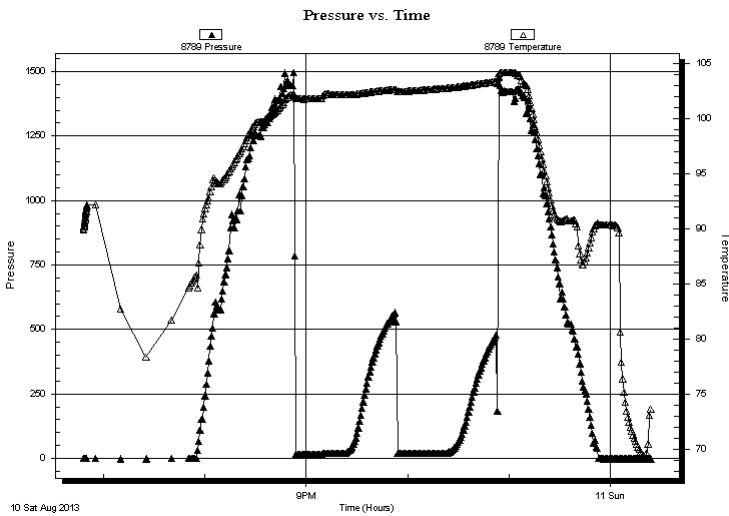
Formation: **LKC " H - J "**
Deviated: No Whipstock: ft (KB) Test Type: Conventional Bottom Hole (Initial)
Time Tool Opened: 20:53:45 Tester: Jim Svaty
Time Test Ended: 00:25:00 Unit No: 54
Interval: 3052.00 ft (KB) To 3109.00 ft (KB) (TVD) Reference Elevations: 1723.00 ft (KB)
Total Depth: 3109.00 ft (KB) (TVD) 1715.00 ft (CF)
Hole Diameter: 7.88 inches Hole Condition: Fair KB to GR/CF: 8.00 ft

Serial #: 8789

Inside

Press @ Run Depth: psig @ 3053.00 ft (KB) Capacity: 8000.00 psig
Start Date: 2013.08.10 End Date: 2013.08.11 Last Calib.: 2013.08.11
Start Time: 18:48:02 End Time: 00:24:30 Time On Btm:
Time Off Btm:

TEST COMMENT: 30-IFP- Good Surge on Open No Blow Flushed at 15 min. Very Weak Surface Blow
30-ISIP- No Blow
30-FFP- No Blow
30-FSIP- No Blow



PRESSURE SUMMARY

Time (Min.)	Pressure (psig)	Temp (deg F)	Annotation

Recovery

Length (ft)	Description	Volume (bbl)
15.00	Oil Speck Mud 100%	0.21

Gas Rates

	Choke (inches)	Pressure (psig)	Gas Rate (Mcf/d)



**TRILOBITE
TESTING, INC**

DRILL STEM TEST REPORT

TOOL DIAGRAM

American Warrior Inc
PO 399
Garden City KS 67846
ATTN: Wyatt Urban

8-19s-9w Rice,KS
Amstutz #1-8
Job Ticket: 50543 **DST#: 1**
Test Start: 2013.08.10 @ 18:48:00

Tool Information

Drill Pipe:	Length: 3033.00 ft	Diameter: 3.80 inches	Volume: 42.55 bbl	Tool Weight:	2500.00 lb
Heavy Wt. Pipe:	Length: 0.00 ft	Diameter: 2.75 inches	Volume: 0.00 bbl	Weight set on Packer:	25000.00 lb
Drill Collar:	Length: 0.00 ft	Diameter: 2.25 inches	Volume: 0.00 bbl	Weight to Pull Loose:	42000.00 lb
			<u>Total Volume: 42.55 bbl</u>	Tool Chased	0.00 ft
Drill Pipe Above KB:	9.00 ft			String Weight: Initial	40000.00 lb
Depth to Top Packer:	3052.00 ft			Final	40000.00 lb
Depth to Bottom Packer:	ft				
Interval between Packers:	57.00 ft				
Tool Length:	85.00 ft				
Number of Packers:	2	Diameter: 6.75 inches			

Tool Comments:

Tool Description	Length (ft)	Serial No.	Position	Depth (ft)	Accum. Lengths
-------------------------	--------------------	-------------------	-----------------	-------------------	-----------------------

Tool Description	Length (ft)	Serial No.	Position	Depth (ft)	Accum. Lengths
Change Over Sub	1.00			3025.00	
Shut In Tool	5.00			3030.00	
Hydraulic tool	5.00			3035.00	
Jars	5.00			3040.00	
Safety Joint	2.00			3042.00	
Packer	5.00			3047.00	28.00 Bottom Of Top Packer
Packer	5.00			3052.00	
Stubb	1.00			3053.00	
Recorder	0.00	8789	Inside	3053.00	
Recorder	0.00	8289	Outside	3053.00	
Perforations	19.00			3072.00	
Change Over Sub	1.00			3073.00	
Blank Spacing	32.00			3105.00	
Change Over Sub	1.00			3106.00	
Bullnose	3.00			3109.00	57.00 Bottom Packers & Anchor

Total Tool Length: 85.00



TRILOBITE
TESTING, INC

DRILL STEM TEST REPORT

FLUID SUMMARY

American Warrior Inc
PO 399
Garden City KS 67846
ATTN: Wyatt Urban

8-19s-9w Rice,KS
Amstutz #1-8
Job Ticket: 50543 **DST#: 1**
Test Start: 2013.08.10 @ 18:48:00

Mud and Cushion Information

Mud Type: Gel Chem	Cushion Type:	Oil API:	deg API
Mud Weight: 9.00 lb/gal	Cushion Length: ft	Water Salinity:	ppm
Viscosity: 46.00 sec/qt	Cushion Volume: bbl		
Water Loss: 7.95 in ³	Gas Cushion Type:		
Resistivity: ohm.m	Gas Cushion Pressure: psig		
Salinity: 5400.00 ppm			
Filter Cake: 0.00 inches			

Recovery Information

Recovery Table

Length ft	Description	Volume bbl
15.00	Oil Speck Mud 100%	0.210

Total Length: 15.00 ft Total Volume: 0.210 bbl

Num Fluid Samples: 0 Num Gas Bombs: 0 Serial #:

Laboratory Name: Laboratory Location:

Recovery Comments:

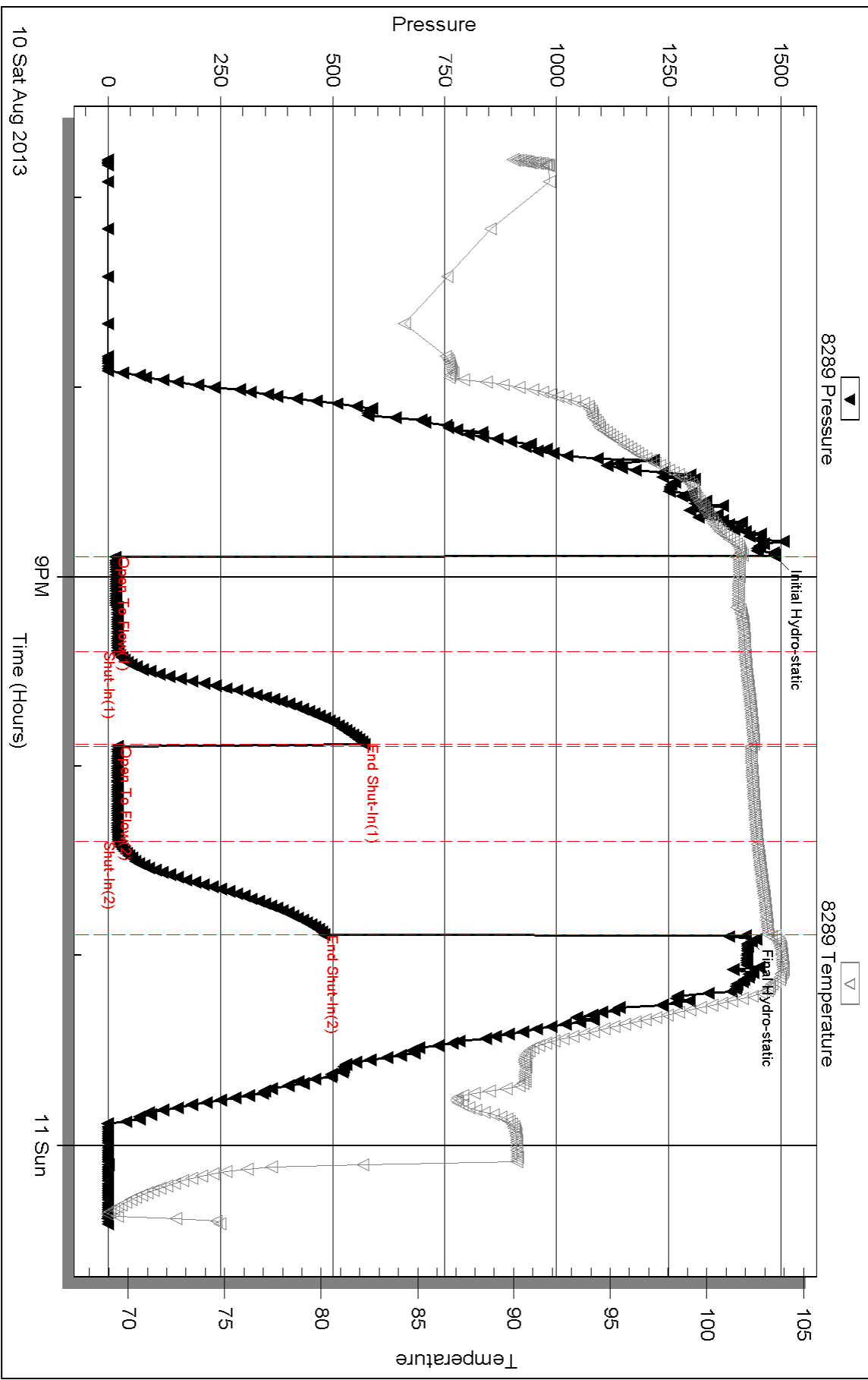
Serial #: 8289

Outside American Warrior Inc

Amstutz #1-8

DST Test Number: 1

Pressure vs. Time



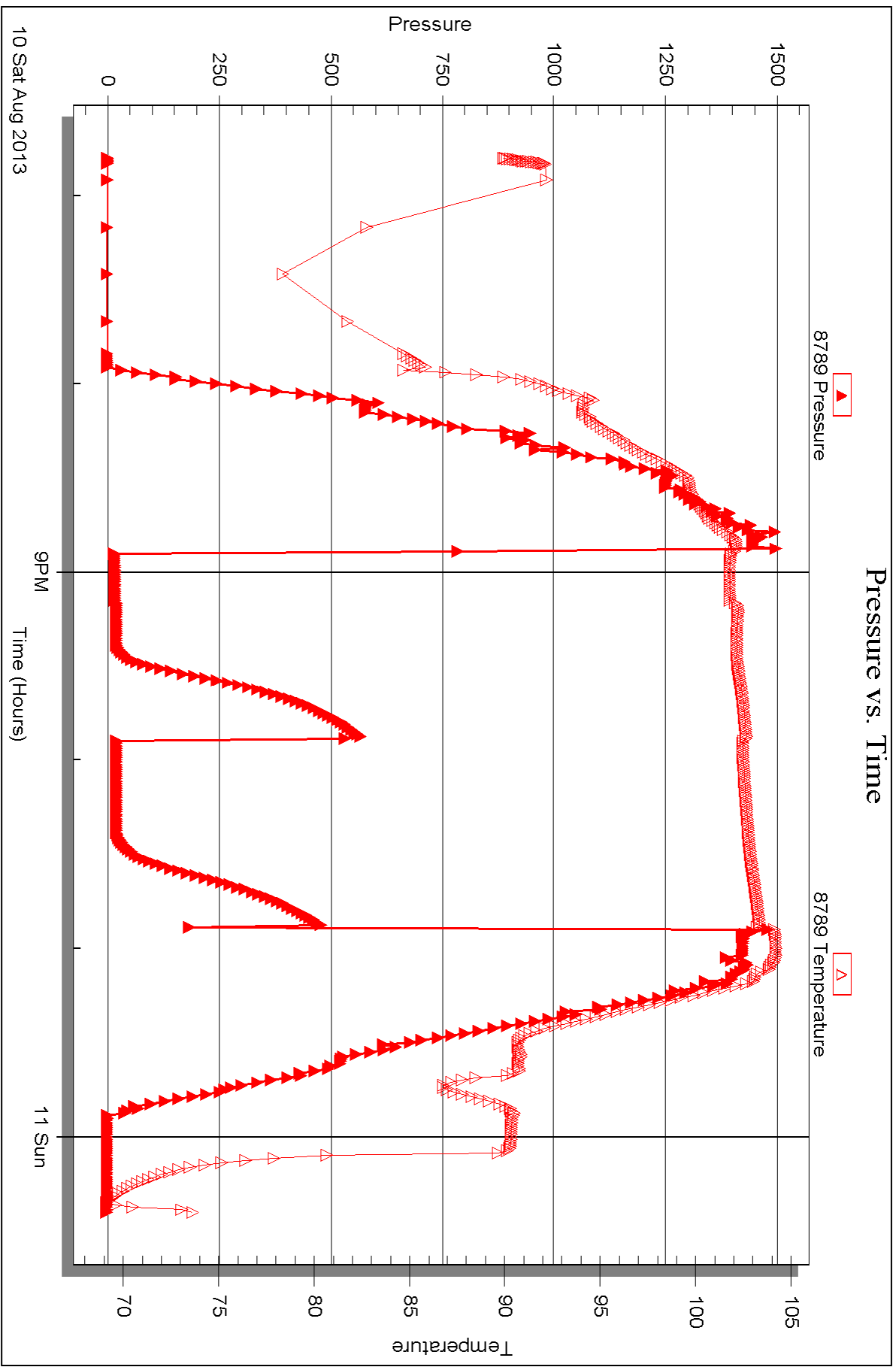
Serial #: 8789

Inside

American Warrior Inc

Amstutz #1-8

DST Test Number: 1



Triobite Testing, Inc

Ref. No: 50543

Printed: 2013.08.12 @ 11:54:09



DRILL STEM TEST REPORT

Prepared For: **American Warrior Inc**

PO 399
Garden City KS 67846

ATTN: Wyatt Urban

Amstutz #1-8

8-19s-9w Rice,KS

Start Date: 2013.08.11 @ 18:50:00

End Date: 2013.08.12 @ 00:20:00

Job Ticket #: 50454 DST #: 2

Trilobite Testing, Inc
PO Box 362 Hays, KS 67601
ph: 785-625-4778 fax: 785-625-5620

Printed: 2013.08.12 @ 11:53:17



TRILOBITE TESTING, INC

DRILL STEM TEST REPORT

American Warrior Inc
 PO 399
 Garden City KS 67846
 ATTN: Wyatt Urban

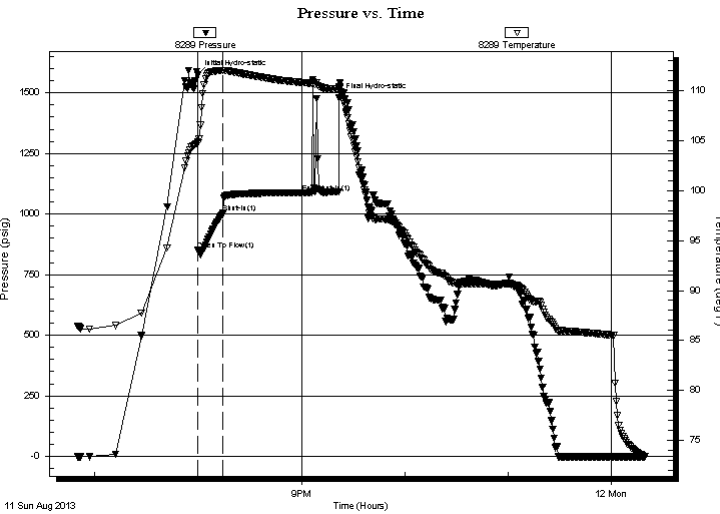
8-19s-9w Rice,KS
Amstutz #1-8
 Job Ticket: 50454 **DST#: 2**
 Test Start: 2013.08.11 @ 18:50:00

GENERAL INFORMATION:

Formation: **Arbuckle**
 Deviated: No Whipstock: (KB) Test Type: Conventional Bottom Hole (Reset)
 Time Tool Opened: 20:00:00 Tester: Jim Svaty
 Time Test Ended: 00:20:00 Unit No: 54
Interval: 3182.00 ft (KB) To 3249.00 ft (KB) (TVD) Reference Elevations: 1723.00 ft (KB)
 Total Depth: 3249.00 ft (KB) (TVD) 1715.00 ft (CF)
 Hole Diameter: 7.88 inches Hole Condition: Fair KB to GR/CF: 8.00 ft

Serial #: 8289 Outside
 Press @ Run Depth: 1003.58 psig @ 3183.00 ft (KB) Capacity: 8000.00 psig
 Start Date: 2013.08.11 End Date: 2013.08.12 Last Calib.: 2013.08.12
 Start Time: 18:50:02 End Time: 00:19:30 Time On Btm: 2013.08.11 @ 19:59:45
 Time Off Btm: 2013.08.11 @ 21:22:00

TEST COMMENT: 15-IFP- BOB in 20 sec. Gas to Surface in 13 min.
 45-ISIP- No Blow
 22-FFP- No Blow Pulled Flushed Plugged



PRESSURE SUMMARY

Time (Min.)	Pressure (psig)	Temp (deg F)	Annotation
0	1573.97	104.93	Initial Hydro-static
1	853.76	104.81	Open To Flow (1)
15	1003.58	112.02	Shut-In(1)
61	1089.26	110.84	End Shut-In(1)
83	1480.30	110.37	Final Hydro-static

Recovery

Length (ft)	Description	Volume (bbl)
1460.00	Water 100%	20.48
252.00	GMCW 10%g 10%m 80%w	3.53
189.00	GMCW 10%g 40%m 50%w	2.65
189.00	Mud 100% Show of Oil	2.65
0.00	GTS	0.00

* Recovery from multiple tests

Gas Rates

Choke (inches)	Pressure (psig)	Gas Rate (Mcf/d)



TRILOBITE TESTING, INC

DRILL STEM TEST REPORT

American Warrior Inc
 PO 399
 Garden City KS 67846
 ATTN: Wyatt Urban

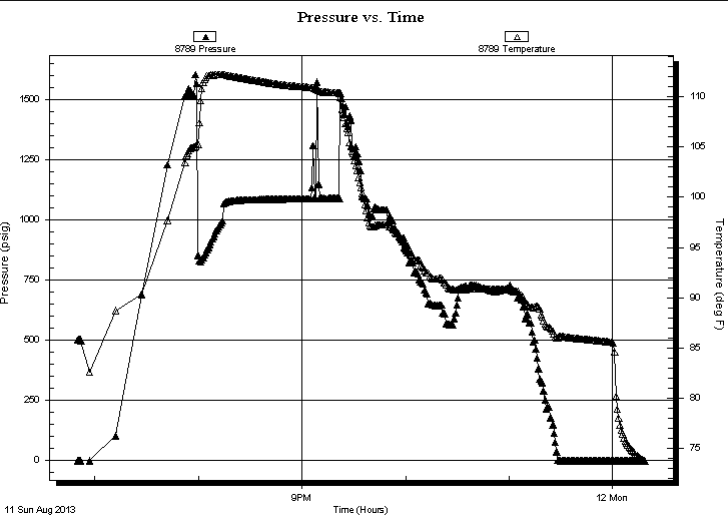
8-19s-9w Rice, KS
Amstutz #1-8
 Job Ticket: 50454 **DST#: 2**
 Test Start: 2013.08.11 @ 18:50:00

GENERAL INFORMATION:

Formation:	Arbuckle				
Deviated:	No	Whipstock:	ft (KB)	Test Type:	Conventional Bottom Hole (Reset)
Time Tool Opened:	20:00:00			Tester:	Jim Svaty
Time Test Ended:	00:20:00			Unit No:	54
Interval:	3182.00 ft (KB) To 3249.00 ft (KB) (TVD)			Reference Elevations:	1723.00 ft (KB)
Total Depth:	3249.00 ft (KB) (TVD)				1715.00 ft (CF)
Hole Diameter:	7.88 inches	Hole Condition:	Fair	KB to GR/CF:	8.00 ft

Serial #: 8789	Inside				
Press @ Run Depth:	psig @	3183.00 ft (KB)	Capacity:	8000.00 psig	
Start Date:	2013.08.11	End Date:	2013.08.12	Last Calib.:	2013.08.12
Start Time:	18:50:02	End Time:	00:19:00	Time On Btm:	
				Time Off Btm:	

TEST COMMENT: 15-IFP- BOB in 20 sec. Gas to Surface in 13 min.
 45-ISIP- No Blow
 22-FFP- No Blow Pulled Flushed Plugged



PRESSURE SUMMARY			
Time (Min.)	Pressure (psig)	Temp (deg F)	Annotation

Recovery		
Length (ft)	Description	Volume (bbl)
1460.00	Water 100%	20.48
252.00	GMCW 10%g 10%m 80%w	3.53
189.00	GMCW 10%g 40%m 50%w	2.65
189.00	Mud 100% Show of Oil	2.65
0.00	GTS	0.00

Gas Rates			
	Choke (inches)	Pressure (psig)	Gas Rate (Mcf/d)

* Recovery from multiple tests



**TRILOBITE
TESTING, INC**

DRILL STEM TEST REPORT

TOOL DIAGRAM

American Warrior Inc
PO 399
Garden City KS 67846
ATTN: Wyatt Urban

8-19s-9w Rice,KS
Amstutz #1-8
Job Ticket: 50454 **DST#: 2**
Test Start: 2013.08.11 @ 18:50:00

Tool Information

Drill Pipe:	Length: 3159.00 ft	Diameter: 3.80 inches	Volume: 44.31 bbl	Tool Weight:	2500.00 lb
Heavy Wt. Pipe:	Length: 0.00 ft	Diameter: 2.75 inches	Volume: 0.00 bbl	Weight set on Packer:	25000.00 lb
Drill Collar:	Length: 0.00 ft	Diameter: 2.25 inches	Volume: 0.00 bbl	Weight to Pull Loose:	54000.00 lb
			<u>Total Volume: 44.31 bbl</u>	Tool Chased	0.00 ft
Drill Pipe Above KB:	5.00 ft			String Weight: Initial	40000.00 lb
Depth to Top Packer:	3182.00 ft			Final	50000.00 lb
Depth to Bottom Packer:	ft				
Interval between Packers:	67.00 ft				
Tool Length:	95.00 ft				
Number of Packers:	2	Diameter: 6.75 inches			

Tool Comments:

Tool Description	Length (ft)	Serial No.	Position	Depth (ft)	Accum. Lengths
-------------------------	--------------------	-------------------	-----------------	-------------------	-----------------------

Change Over Sub	1.00			3155.00	
Shut In Tool	5.00			3160.00	
Hydraulic tool	5.00			3165.00	
Jars	5.00			3170.00	
Safety Joint	2.00			3172.00	
Packer	5.00			3177.00	28.00 Bottom Of Top Packer
Packer	5.00			3182.00	
Stubb	1.00			3183.00	
Recorder	0.00	8789	Inside	3183.00	
Recorder	0.00	8289	Outside	3183.00	
Perforations	29.00			3212.00	
Change Over Sub	1.00			3213.00	
Blank Spacing	32.00			3245.00	
Change Over Sub	1.00			3246.00	
Bullnose	3.00			3249.00	67.00 Bottom Packers & Anchor

Total Tool Length: 95.00



TRILOBITE
TESTING, INC

DRILL STEM TEST REPORT

FLUID SUMMARY

American Warrior Inc
PO 399
Garden City KS 67846
ATTN: Wyatt Urban

8-19s-9w Rice,KS
Amstutz #1-8
Job Ticket: 50454 **DST#: 2**
Test Start: 2013.08.11 @ 18:50:00

Mud and Cushion Information

Mud Type: Gel Chem	Cushion Type:	Oil API:	deg API
Mud Weight: 9.00 lb/gal	Cushion Length: ft	Water Salinity:	17000 ppm
Viscosity: 49.00 sec/qt	Cushion Volume: bbl		
Water Loss: 8.77 in ³	Gas Cushion Type:		
Resistivity: ohm.m	Gas Cushion Pressure: psig		
Salinity: 79000.00 ppm			
Filter Cake: 0.00 inches			

Recovery Information

Recovery Table

Length ft	Description	Volume bbl
1460.00	Water 100%	20.480
252.00	GMCW 10%g 10%m 80%w	3.535
189.00	GMCW 10%g 40%m 50%w	2.651
189.00	Mud 100% Show of Oil	2.651
0.00	GTS	0.000

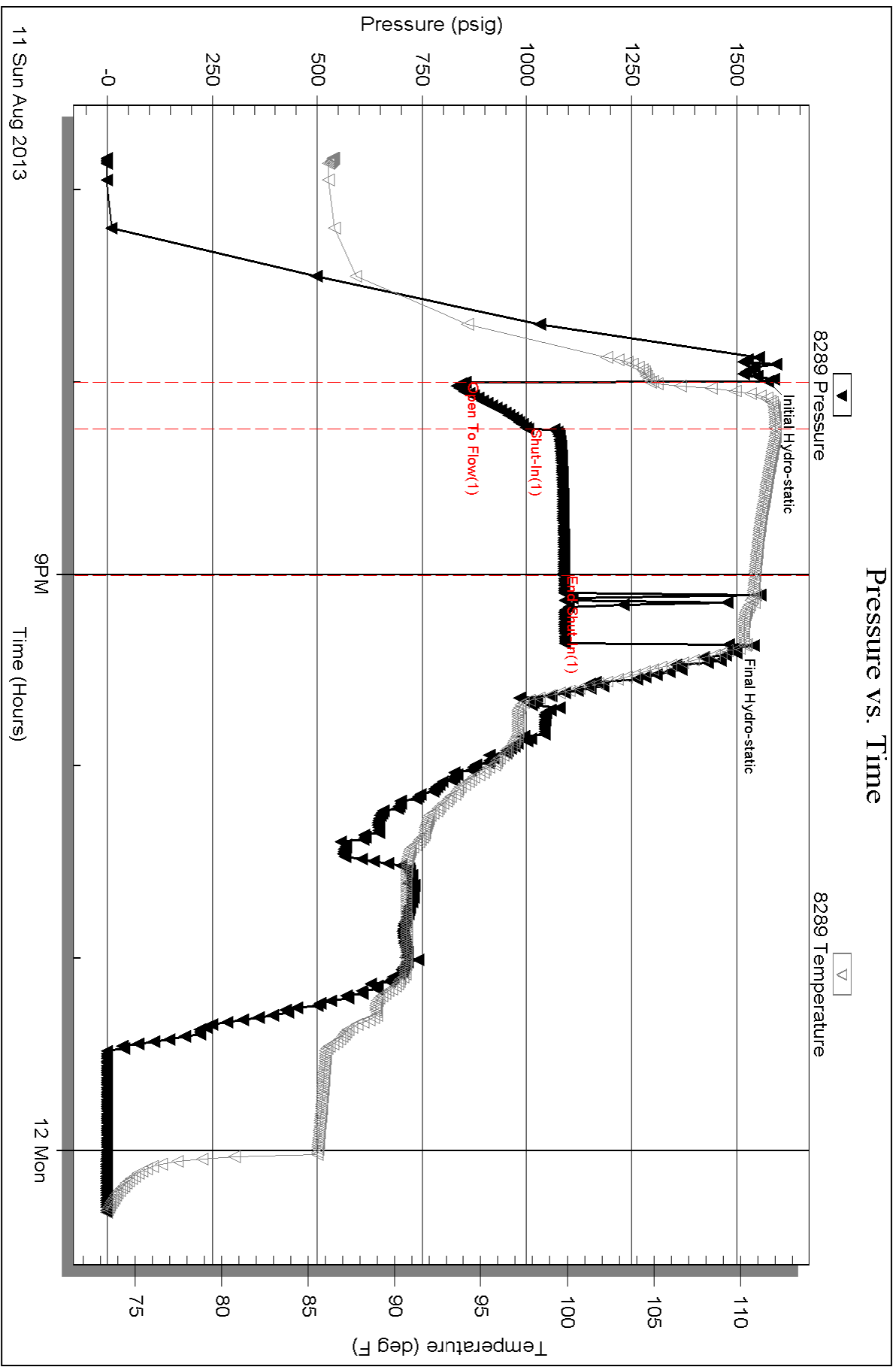
Total Length: 2090.00 ft Total Volume: 29.317 bbl
 Num Fluid Samples: 0 Num Gas Bombs: 0 Serial #:
 Laboratory Name: Laboratory Location:
 Recovery Comments: .390 @ 70

Serial #: 8289

Outside American Warrior Inc

Amstutz #1-8

DST Test Number: 2



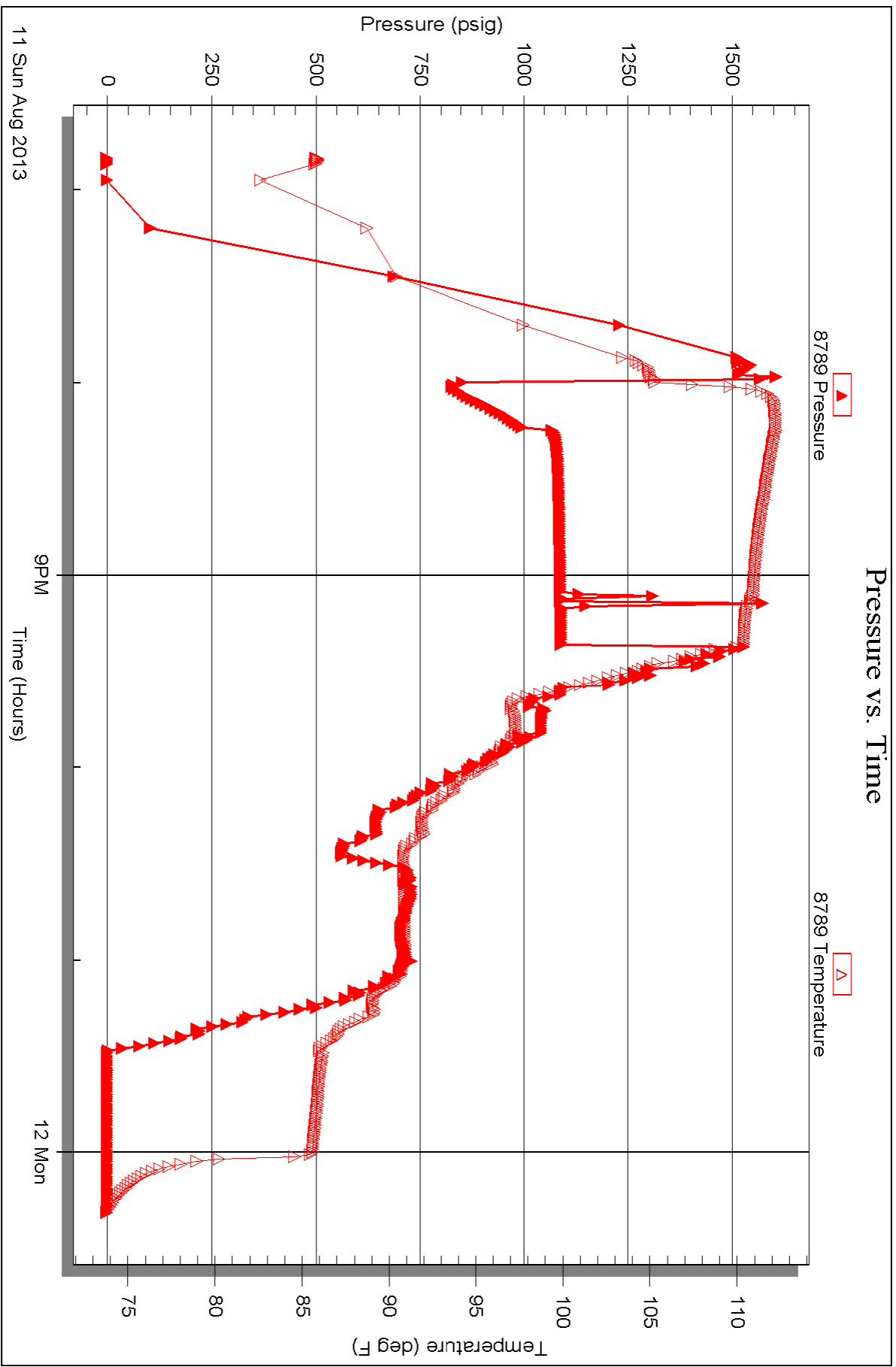
Serial #: 8789

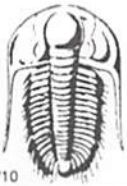
Inside

American Warrior Inc

Amstutz #1-8

DST Test Number: 2





TRILOBITE TESTING INC.

1515 Commerce Parkway • Hays, Kansas 67601

Test Ticket

NO. 50453

4/10

Well Name & No. Amstutz # 1-8 Test No. 1 Date 8-10-13
 Company American Warrior Inc. Elevation 1723 KB 1715 GL
 Address P.O. Box 399, Garden City, KS, 67846
 Co. Rep / Geo. Wyatt Urban Rig Duke # 8
 Location: Sec. 8 Twp. 19^s Rge. 9w Co. Rice State KS

Interval Tested 3052-3109 Zone Tested LKC "H-J"
 Anchor Length 57 Drill Pipe Run 3033 Mud Wt. 9.0
 Top Packer Depth 3047 Drill Collars Run 0 Vis 46
 Bottom Packer Depth 3052 Wt. Pipe Run 0 WL 8.0
 Total Depth 3109 Chlorides 5400 ppm System LCM 0

Blow Description IFP - Good Surge on Open No Blow Flushed at 15min Very Weak Surface Blow,
ISIP - No Blow
FFP - No Blow
FSIP - No Blow

Rec	Feet of	%gas	%oil	%water	%mud
<u>15</u>	<u>Oil Speck Mud</u>			<u>100</u>	
Rec	Feet of	%gas	%oil	%water	%mud
Rec	Feet of	%gas	%oil	%water	%mud
Rec	Feet of	%gas	%oil	%water	%mud
Rec	Feet of	%gas	%oil	%water	%mud

Rec Total 15 BHT 103 Gravity _____ API RW _____ @ _____ °F Chlorides _____ ppm

(A) Initial Hydrostatic <u>1487</u>	<input checked="" type="checkbox"/> Test <u>1150</u>	T-On Location <u>17:00</u>
(B) First Initial Flow <u>15</u>	<input checked="" type="checkbox"/> Jars <u>250</u>	T-Started <u>18:48</u>
(C) First Final Flow <u>20</u>	<input checked="" type="checkbox"/> Safety Joint <u>75</u>	T-Open <u>20:54</u>
(D) Initial Shut-In <u>571</u>	<input type="checkbox"/> Circ Sub _____	T-Pulled <u>22:54</u>
(E) Second Initial Flow <u>20</u>	<input type="checkbox"/> Hourly Standby _____	T-Out <u>00:25</u>
(F) Second Final Flow <u>21</u>	<input checked="" type="checkbox"/> Mileage <u>172 RT</u>	Comments _____
(G) Final Shut-In <u>480</u>	<input type="checkbox"/> Sampler _____	
(H) Final Hydrostatic <u>1421</u>	<input type="checkbox"/> Straddle _____	
Initial Open <u>30</u>	<input checked="" type="checkbox"/> Shale Packer <u>250</u>	<input type="checkbox"/> Ruined Shale Packer _____
Initial Shut-In <u>30</u>	<input type="checkbox"/> Extra Packer _____	<input type="checkbox"/> Ruined Packer _____
Final Flow <u>30</u>	<input type="checkbox"/> Extra Recorder _____	<input type="checkbox"/> Extra Copies _____
Final Shut-In <u>30</u>	<input type="checkbox"/> Day Standby _____	Sub Total <u>Thank You!</u>
	<input type="checkbox"/> Accessibility _____	Total <u>1951.30</u>
	Sub Total <u>1951.30</u>	MP/DST Disc't <u>7856395864</u>

Approved By _____ Our Representative [Signature]
 Trilobite Testing Inc. shall not be liable for damaged of any kind of the property or personnel of the one for whom a test is made, or for any loss suffered or sustained, directly or indirectly, through the use of its equipment, or its statements or opinion concerning the results of any test, tools lost or damaged in the hole shall be paid for at cost by the party for whom the test is made.



TRILOBITE TESTING INC.

1515 Commerce Parkway • Hays, Kansas 67601

Test Ticket

NO. 50454

4/10

Well Name & No. Amstutz # 1-8 Test No. 2 Date 8-11-13
 Company American Warrior, INC Elevation 1723 KB 1715 GL
 Address P.O. Box 399 Garden City K.S. 67846
 Co. Rep / Geo. Wyatt Urban Rig Duke # 8
 Location: Sec. 8 Twp. 19S Rge. 9W Co. Rice State KS

Interval Tested 3182-3249 Zone Tested Arbuckle
 Anchor Length 67 Drill Pipe Run 3159 Mud Wt. 9.1
 Top Packer Depth 3177 Drill Collars Run 0 Vis 49
 Bottom Packer Depth 3182 Wt. Pipe Run 0 WL 8.8
 Total Depth 3249 Chlorides 7900 ppm System LCM 0

Blow Description FFP - BOB in 20 sec. Gas to Surface / 3min
FSIP - No Blow
FFP - No Blow Flushed / Pulled Plugged
FSIP -

Rec	Feet of	%gas	%oil	%water	%mud
<u>1460</u>	<u>Water</u>		<u>100</u>		
<u>252</u>	<u>DMCW</u>	<u>10</u>	<u>80</u>	<u>10</u>	
<u>189</u>	<u>DMCW</u>	<u>10</u>	<u>50</u>	<u>40</u>	
<u>189</u>	<u>mud show of Oil</u>			<u>100</u>	
<u> </u>	<u>Gas to Surface</u>				

Rec Total 2090 BHT 110 Gravity API RW.390 @ 70 ° F Chlorides 17,000 ppm

(A) Initial Hydrostatic 1573 Test 1150 T-On Location 13:25
 (B) First Initial Flow 853 Jars 250 T-Started 18:50
 (C) First Final Flow 1003 Safety Joint 75 T-Open 20:00
 (D) Initial Shut-In 1089 Circ Sub Dropped Bar 50 T-Pulled 21:22
 (E) Second Initial Flow plug Hourly Standby T-Out 00:20

(F) Second Final Flow Mileage 226.30 Comments 3 Hour Rig Repair
 (G) Final Shut-In Sampler
 (H) Final Hydrostatic 1480 Straddle

Shale Packer 250 Ruined Shale Packer
 Extra Packer Ruined Packer

Initial Open 15 Extra Recorder Sub Total 0
 Initial Shut-In 45 Day Standby Total 2001.30
 Final Flow 22 Accessibility MP/DST Disc't
 Final Shut-In Sub Total 2001.30

Approved By Our Representative *[Signature]*

TriLOBITE TESTING Inc. shall not be liable for damaged of any kind of the property or personnel of the one for whom a test is made, or for any loss suffered or sustained, directly or indirectly, through the use of its equipment, or its statements or opinion concerning the results of any test, tools lost or damaged in the hole shall be paid for at cost by the party for whom the test is made.