



DRILL STEM TEST REPORT

Prepared For: **H & C Operating**

PO Box 56
Plainville, KS 67663-0086

ATTN: Marc Downing

Stowell #17-2

17-6s-23w Graham,KS

Start Date: 2014.02.19 @ 01:20:20

End Date: 2014.02.19 @ 10:27:30

Job Ticket #: 53686 DST #: 1

Trilobite Testing, Inc
PO Box 362 Hays, KS 67601
ph: 785-625-4778 fax: 785-625-5620

Printed: 2014.02.24 @ 08:16:02



**TRILOBITE
TESTING, INC**

DRILL STEM TEST REPORT

H & C Operating
PO Box 56
Plainville, KS 67663-0086
ATTN: Marc Downing

17-6s-23w Graham,KS
Stowell #17-2
Job Ticket: 53686 **DST#: 1**
Test Start: 2014.02.19 @ 01:20:20

GENERAL INFORMATION:

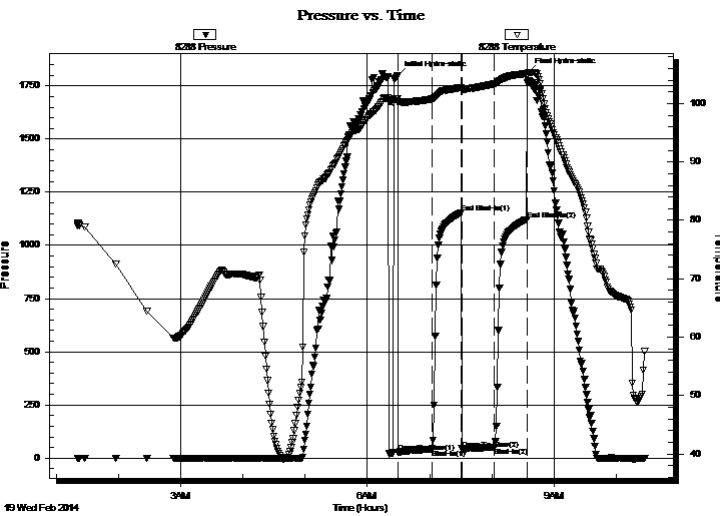
Formation: **Toronto LKC A**
Deviated: No Whipstock: 0.00 ft (KB)
Time Tool Opened: 06:29:20
Time Test Ended: 10:27:30
Interval: **3635.00 ft (KB) To 3698.00 ft (KB) (TVD)**
Total Depth: 3698.00 ft (KB) (TVD)
Hole Diameter: 7.88 inches Hole Condition: Fair
Reference Elevations: 2437.00 ft (KB)
2430.00 ft (CF)
KB to GR/CF: 7.00 ft
Test Type: Conventional Bottom Hole (Initial)
Tester: Stuart Stover
Unit No: 44

Serial #: 8288

Inside

Press@RunDepth: 52.07 psig @ 3636.00 ft (KB)
Start Date: 2014.02.19 End Date: 2014.02.19
Start Time: 01:20:22 End Time: 10:27:30
Capacity: 8000.00 psig
Last Calib.: 2014.02.19
Time On Btm: 2014.02.19 @ 06:29:10
Time Off Btm: 2014.02.19 @ 08:34:50

TEST COMMENT: IFP: Surface blow thru out
FFP: Surface blow died in 20 minutes



PRESSURE SUMMARY

Time (Min.)	Pressure (psig)	Temp (deg F)	Annotation
0	1797.84	100.84	Initial Hydro-static
1	26.99	100.11	Open To Flow (1)
34	42.52	100.78	Shut-In(1)
62	1154.50	102.78	End Shut-In(1)
62	43.61	102.37	Open To Flow (2)
94	52.07	103.35	Shut-In(2)
125	1122.61	105.12	End Shut-In(2)
126	1813.40	105.23	Final Hydro-static

Recovery

Length (ft)	Description	Volume (bbl)
75.00	Drig mud	0.78

Gas Rates

	Choke (inches)	Pressure (psig)	Gas Rate (Mcf/d)



**TRILOBITE
TESTING, INC**

DRILL STEM TEST REPORT

H & C Operating
PO Box 56
Plainville, KS 67663-0086
ATTN: Marc Downing

17-6s-23w Graham,KS
Stowell #17-2
Job Ticket: 53686 **DST#: 1**
Test Start: 2014.02.19 @ 01:20:20

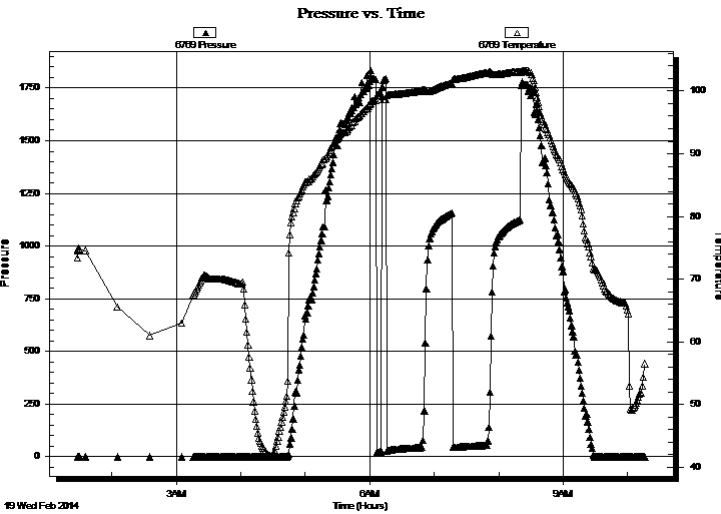
GENERAL INFORMATION:

Formation: **Toronto LKC A**
Deviated: No Whipstock: 0.00 ft (KB)
Time Tool Opened: 06:29:20
Time Test Ended: 10:27:30
Interval: **3635.00 ft (KB) To 3698.00 ft (KB) (TVD)**
Total Depth: 3698.00 ft (KB) (TVD)
Hole Diameter: 7.88 inches Hole Condition: Fair
Test Type: Conventional Bottom Hole (Initial)
Tester: Stuart Stover
Unit No: 44
Reference Elevations: 2437.00 ft (KB)
2430.00 ft (CF)
KB to GR/CF: 7.00 ft

Serial #: 6769

Press@RunDepth: psig @ ft (KB) Capacity: 8000.00 psig
Start Date: 2014.02.19 End Date: 2014.02.19 Last Calib.: 2014.02.19
Start Time: 01:28:08 End Time: 10:15:55 Time On Btm: Time Off Btm:

TEST COMMENT: IFP: Surface blow thru out
FFP: Surface blow died in 20 mionutes



PRESSURE SUMMARY

Time (Min.)	Pressure (psig)	Temp (deg F)	Annotation

Recovery

Length (ft)	Description	Volume (bbl)
75.00	Drig mud	0.78

Gas Rates

Choke (inches)	Pressure (psig)	Gas Rate (Mcf/d)



**TRILOBITE
TESTING, INC**

DRILL STEM TEST REPORT

TOOL DIAGRAM

H & C Operating

17-6s-23w Graham,KS

PO Box 56
Plainville, KS 67663-0086

Stowell #17-2

Job Ticket: 53686

DST#: 1

ATTN: Marc Downing

Test Start: 2014.02.19 @ 01:20:20

Tool Information

Drill Pipe:	Length: 3615.00 ft	Diameter: 3.80 inches	Volume: 50.71 bbl	Tool Weight: 2400.00 lb
Heavy Wt. Pipe:	Length: 0.00 ft	Diameter: inches	Volume: 0.00 bbl	Weight set on Packer: 25000.00 lb
Drill Collar:	Length: 30.00 ft	Diameter: 2.25 inches	Volume: 0.15 bbl	Weight to Pull Loose: 45000.00 lb
			<u>Total Volume: 50.86 bbl</u>	Tool Chased 2.00 ft
Drill Pipe Above KB:	30.00 ft			String Weight: Initial 38000.00 lb
Depth to Top Packer:	3635.00 ft			Final 38000.00 lb
Depth to Bottom Packer:	ft			
Interval between Packers:	63.00 ft			
Tool Length:	83.00 ft			
Number of Packers:	2	Diameter: 6.75 inches		

Tool Comments:

Tool Description	Length (ft)	Serial No.	Position	Depth (ft)	Accum. Lengths
------------------	-------------	------------	----------	------------	----------------

Shut In Tool	5.00			3620.00	
Hydraulic tool	5.00			3625.00	
Packer	5.00			3630.00	20.00 Bottom Of Top Packer
Packer	5.00			3635.00	
Stubb	1.00			3636.00	
Recorder	0.00	8288	Inside	3636.00	
Recorder	0.00	8521	Outside	3636.00	
Perforations	10.00			3646.00	
Change Over Sub	1.00			3647.00	
Drill Pipe	30.00			3677.00	
Change Over Sub	1.00			3678.00	
Perforations	16.00			3694.00	
Bullnose	4.00			3698.00	63.00 Bottom Packers & Anchor

Total Tool Length: 83.00



**TRILOBITE
TESTING, INC**

DRILL STEM TEST REPORT

FLUID SUMMARY

H & C Operating
PO Box 56
Plainville, KS 67663-0086
ATTN: Marc Downing

17-6s-23w Graham,KS
Stowell #17-2
Job Ticket: 53686 **DST#: 1**
Test Start: 2014.02.19 @ 01:20:20

Mud and Cushion Information

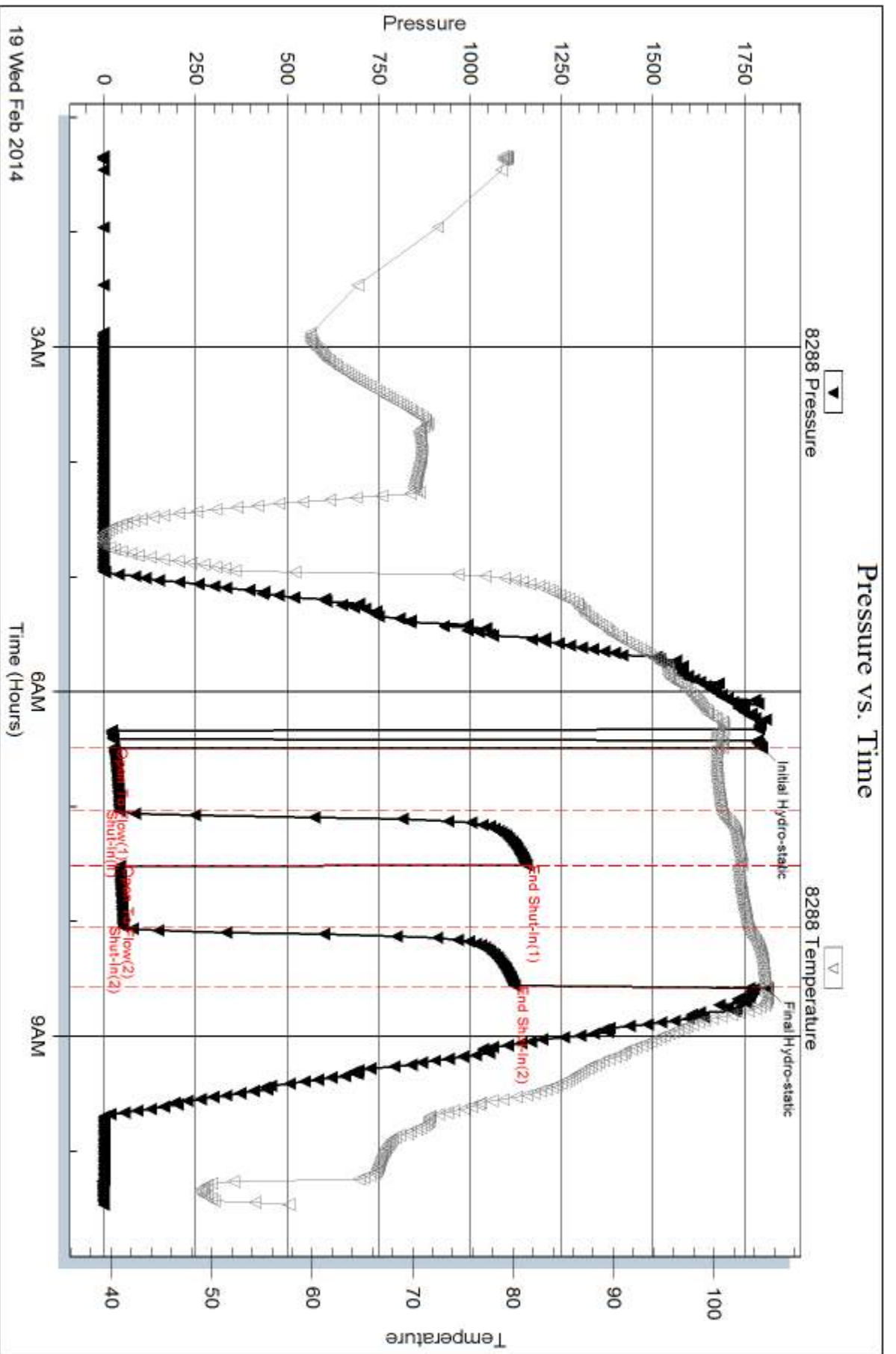
Mud Type: Gel Chem	Cushion Type:	Oil API:	deg API
Mud Weight: 9.00 lb/gal	Cushion Length: ft	Water Salinity:	800 ppm
Viscosity: 52.00 sec/qt	Cushion Volume: bbl		
Water Loss: 5.19 in ³	Gas Cushion Type:		
Resistivity: ohm.m	Gas Cushion Pressure: psig		
Salinity: 800.00 ppm			
Filter Cake: inches			

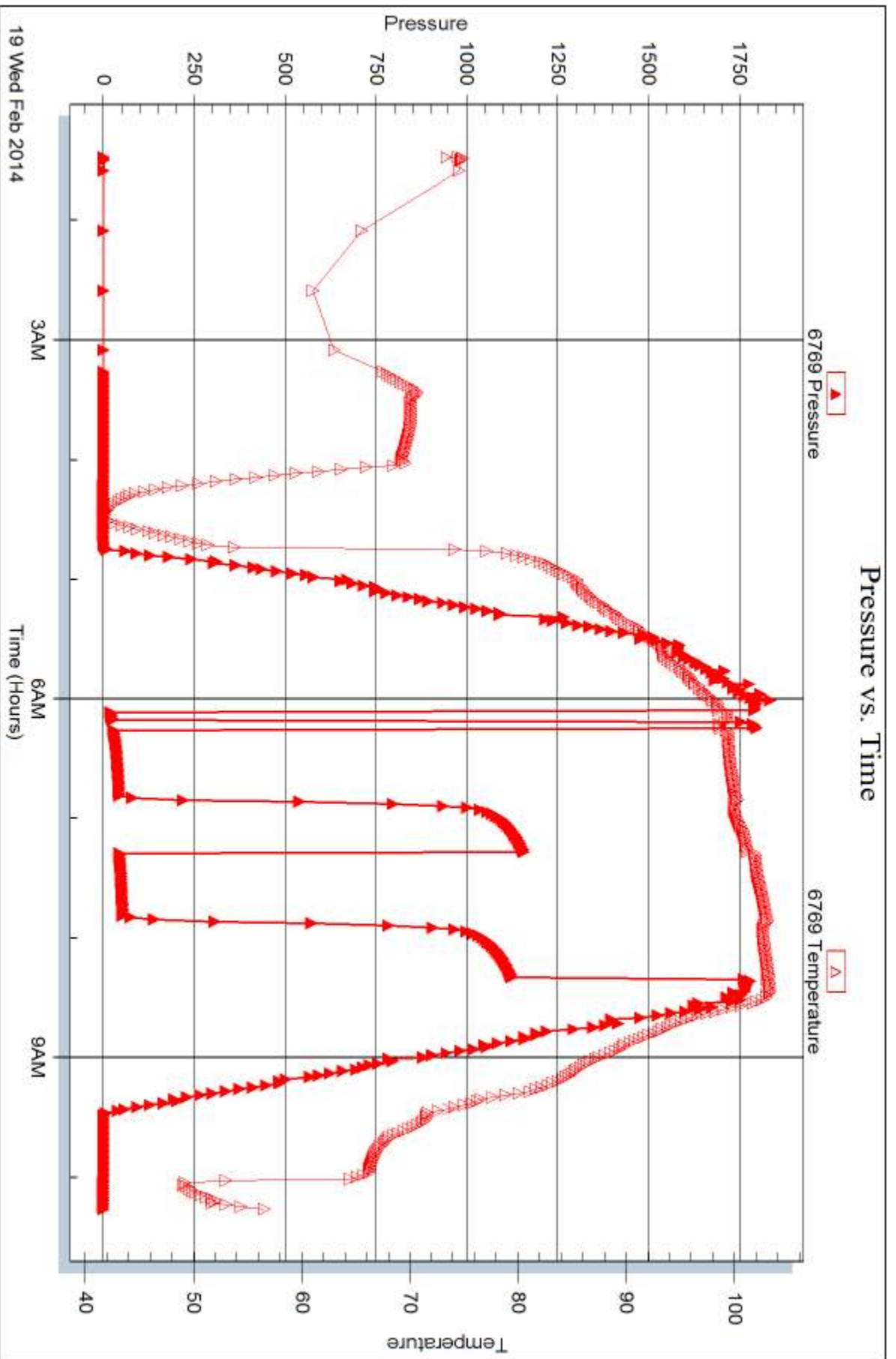
Recovery Information

Recovery Table

Length ft	Description	Volume bbl
75.00	Drig mud	0.779

Total Length: 75.00 ft Total Volume: 0.779 bbl
Num Fluid Samples: 0 Num Gas Bombs: 0 Serial #:
Laboratory Name: Laboratory Location:
Recovery Comments:







DRILL STEM TEST REPORT

Prepared For: **H & C Operating**

PO Box 56
Plainville, KS 67663-0086

ATTN: Marc Downing

Stowell #17-2

17-6s-23w Graham,KS

Start Date: 2014.02.19 @ 19:06:35

End Date: 2014.02.20 @ 00:44:05

Job Ticket #: 53687 DST #: 2

Trilobite Testing, Inc
PO Box 362 Hays, KS 67601
ph: 785-625-4778 fax: 785-625-5620

Printed: 2014.02.24 @ 08:15:34



**TRILOBITE
TESTING, INC**

DRILL STEM TEST REPORT

H & C Operating
PO Box 56
Plainville, KS 67663-0086
ATTN: Marc Downing

17-6s-23w Graham,KS
Stowell #17-2
Job Ticket: 53687 **DST#: 2**
Test Start: 2014.02.19 @ 19:06:35

GENERAL INFORMATION:

Formation: **LKC C-D**
Deviated: No Whipstock: 0.00 ft (KB)
Time Tool Opened: 20:42:35
Time Test Ended: 00:44:05
Interval: **3695.00 ft (KB) To 3735.00 ft (KB) (TVD)**
Total Depth: 3698.00 ft (KB) (TVD)
Hole Diameter: 7.88 inches Hole Condition: Fair
Test Type: Conventional Bottom Hole (Reset)
Tester: Paul Simpson
Unit No: 44
Reference Elevations: 2437.00 ft (KB)
2430.00 ft (CF)
KB to GR/CF: 7.00 ft

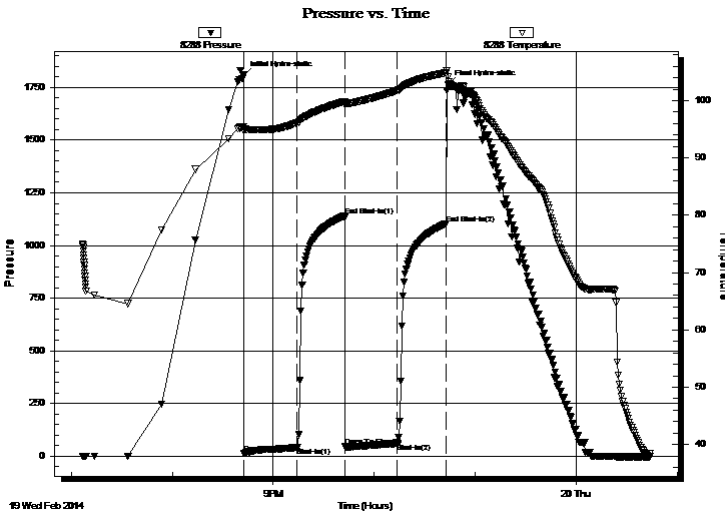
Serial #: 8288

Inside

Press@RunDepth: 61.16 psig @ 3696.00 ft (KB) Capacity: 8000.00 psig
Start Date: 2014.02.19 End Date: 2014.02.20 Last Calib.: 2014.02.19
Start Time: 19:06:37 End Time: 00:44:05 Time On Btm: 2014.02.19 @ 20:42:25
Time Off Btm: 2014.02.19 @ 22:43:45

TEST COMMENT: 30- IF weak 1/4" blow built to 1 1/2"
30- no blow
30- FF surface blow built to 1 1/2"
30 no blow

PRESSURE SUMMARY



Time (Min.)	Pressure (psig)	Temp (deg F)	Annotation
0	1808.24	95.51	Initial Hydro-static
1	14.01	94.74	Open To Flow (1)
32	41.64	96.15	Shut-In(1)
60	1139.57	99.83	End Shut-In(1)
61	45.80	99.23	Open To Flow (2)
92	61.16	101.79	Shut-In(2)
120	1102.42	104.83	End Shut-In(2)
122	1761.64	104.12	Final Hydro-static

Recovery

Length (ft)	Description	Volume (bbl)
105.00	watery mud 10% water 90 % Mud	1.20
0.00	oil specks in tool	0.00

* Recovery from multiple tests

Gas Rates

Choke (inches)	Pressure (psig)	Gas Rate (Mcf/d)



**TRILOBITE
TESTING, INC**

DRILL STEM TEST REPORT

TOOL DIAGRAM

H & C Operating

17-6s-23w Graham,KS

PO Box 56
Plainville, KS 67663-0086

Stowell #17-2

Job Ticket: 53687

DST#: 2

ATTN: Marc Downing

Test Start: 2014.02.19 @ 19:06:35

Tool Information

Drill Pipe:	Length: 3651.00 ft	Diameter: 3.80 inches	Volume: 51.21 bbl	Tool Weight: 2400.00 lb
Heavy Wt. Pipe:	Length: 0.00 ft	Diameter: inches	Volume: 0.00 bbl	Weight set on Packer: 20000.00 lb
Drill Collar:	Length: 30.00 ft	Diameter: 2.25 inches	Volume: 0.15 bbl	Weight to Pull Loose: 46000.00 lb
			<u>Total Volume: 51.36 bbl</u>	Tool Chased ft
Drill Pipe Above KB:	6.00 ft			String Weight: Initial 44000.00 lb
Depth to Top Packer:	3695.00 ft			Final 44000.00 lb
Depth to Bottom Packer:	ft			
Interval between Packers:	40.00 ft			
Tool Length:	60.00 ft			
Number of Packers:	2	Diameter: 6.75 inches		

Tool Comments:

Tool Description

Tool Description	Length (ft)	Serial No.	Position	Depth (ft)	Accum. Lengths
Shut In Tool	5.00			3680.00	
Hydraulic tool	5.00			3685.00	
Packer	5.00			3690.00	20.00 Bottom Of Top Packer
Packer	5.00			3695.00	
Stubb	1.00			3696.00	
Recorder	0.00	8288	Inside	3696.00	
Recorder	0.00	8521	Outside	3696.00	
Perforations	2.00			3698.00	
Change Over Sub	1.00			3699.00	
Drill Pipe	31.00			3730.00	
Change Over Sub	1.00			3731.00	
Bullnose	4.00			3735.00	40.00 Bottom Packers & Anchor

Total Tool Length: 60.00



**TRILOBITE
TESTING, INC**

DRILL STEM TEST REPORT

FLUID SUMMARY

H & C Operating

17-6s-23w Graham,KS

PO Box 56
Plainville, KS 67663-0086

Stowell #17-2

Job Ticket: 53687

DST#: 2

ATTN: Marc Downing

Test Start: 2014.02.19 @ 19:06:35

Mud and Cushion Information

Mud Type: Gel Chem

Cushion Type:

Oil API:

deg API

Mud Weight: 9.00 lb/gal

Cushion Length:

ft

Water Salinity:

ppm

Viscosity: 50.00 sec/qt

Cushion Volume:

bbbl

Water Loss: 5.59 in³

Gas Cushion Type:

Resistivity: ohm.m

Gas Cushion Pressure:

psig

Salinity: 800.00 ppm

Filter Cake: inches

Recovery Information

Recovery Table

Length ft	Description	Volume bbl
105.00	watery mud 10% water 90 % Mud	1.200
0.00	oil specks in tool	0.000

Total Length: 105.00 ft

Total Volume: 1.200 bbl

Num Fluid Samples: 0

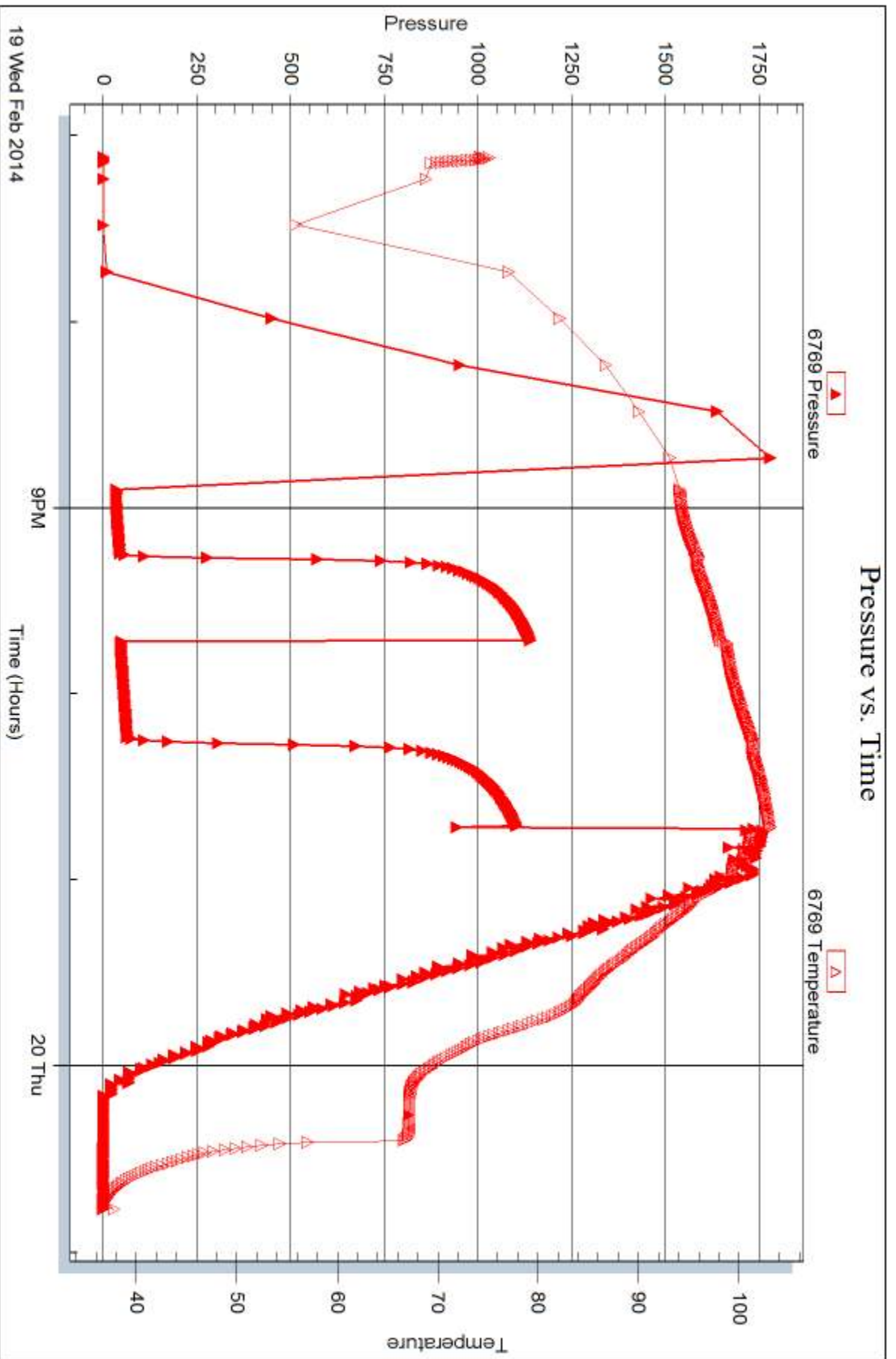
Num Gas Bombs: 0

Serial #:

Laboratory Name:

Laboratory Location:

Recovery Comments:





DRILL STEM TEST REPORT

Prepared For: **H & C Operating**

PO Box 56
Plainville, KS 67663-0086

ATTN: Marc Downing

Stowell #17-2

17-6s-23w Graham,KS

Start Date: 2014.02.20 @ 15:00:00

End Date: 2014.02.20 @ 21:55:45

Job Ticket #: 56215 DST #: 3

Trilobite Testing, Inc
PO Box 362 Hays, KS 67601
ph: 785-625-4778 fax: 785-625-5620

Printed: 2014.02.24 @ 08:14:57

H & C Operating
17-6s-23w Graham,KS
Stowell #17-2
DST # 3
KC "H-J"
2014.02.20



TRILOBITE TESTING, INC.

DRILL STEM TEST REPORT

H & C Operating
 PO Box 56
 Plainville, KS 67663-0086
 ATTN: Marc Downing

17-6s-23w Graham,KS
Stowell #17-2
 Job Ticket: 56215 **DST#: 3**
 Test Start: 2014.02.20 @ 15:00:00

GENERAL INFORMATION:

Formation: **KC "H-J"**
 Deviated: No Whipstock: 0.00 ft (KB)
 Time Tool Opened: 17:08:45
 Time Test Ended: 21:55:45
 Interval: **3777.00 ft (KB) To 3834.00 ft (KB) (TVD)**
 Total Depth: 3834.00 ft (KB) (TVD)
 Hole Diameter: 7.88 inches Hole Condition: Fair
 Test Type: Conventional Bottom Hole (Reset)
 Tester: Brett Dickinson
 Unit No: 59
 Reference Elevations: 2437.00 ft (KB)
 2430.00 ft (CF)
 KB to GR/CF: 7.00 ft

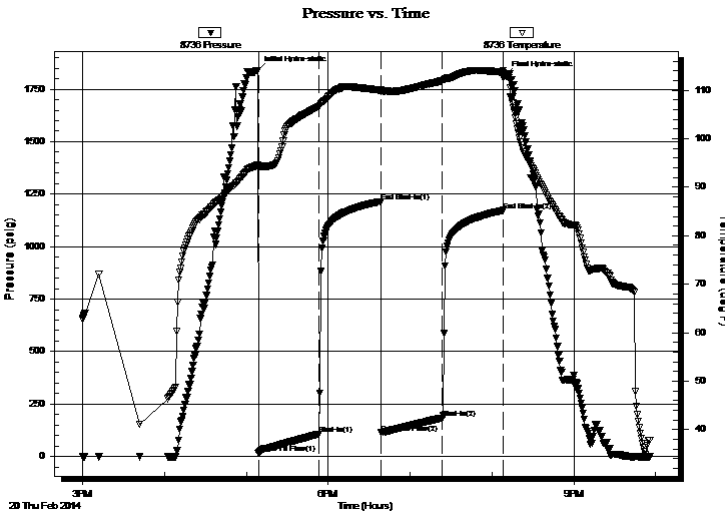
Serial #: 8736

Outside

Press@RunDepth: 183.56 psig @ 3778.00 ft (KB) Capacity: 8000.00 psig
 Start Date: 2014.02.20 End Date: 2014.02.20 Last Calib.: 2014.02.20
 Start Time: 15:00:05 End Time: 21:55:44 Time On Btm: 2014.02.20 @ 17:08:15
 Time Off Btm: 2014.02.20 @ 20:09:30

TEST COMMENT: IF-BOB in 35 min
 IS-No blow
 FF-5" blow
 FS-No blow

PRESSURE SUMMARY



Time (Min.)	Pressure (psig)	Temp (deg F)	Annotation
0	1839.55	94.59	Initial Hydro-static
1	16.29	93.96	Open To Flow (1)
45	107.28	106.69	Shut-In(1)
90	1214.28	110.05	End Shut-In(1)
91	112.26	109.80	Open To Flow (2)
136	183.56	111.97	Shut-In(2)
180	1172.58	113.73	End Shut-In(2)
182	1816.92	113.17	Final Hydro-static

Recovery

Length (ft)	Description	Volume (bbl)
319.00	MCW 20%M 80%W	4.20
1.00	Free Oil	0.01

* Recovery from multiple tests

Gas Rates

Choke (inches)	Pressure (psig)	Gas Rate (Mcf/d)



TRILOBITE TESTING, INC

DRILL STEM TEST REPORT

H & C Operating
 PO Box 56
 Plainville, KS 67663-0086
 ATTN: Marc Downing

17-6s-23w Graham,KS
Stowell #17-2
 Job Ticket: 56215 **DST#: 3**
 Test Start: 2014.02.20 @ 15:00:00

GENERAL INFORMATION:

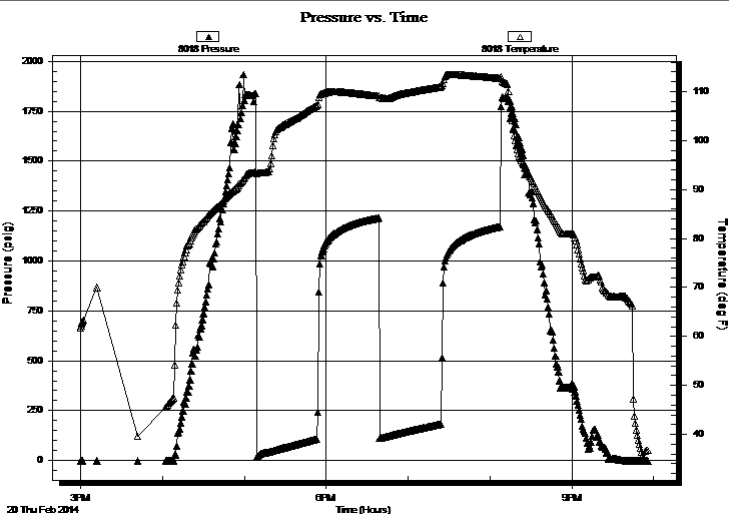
Formation: **KC "H-J"**
 Deviated: No Whipstock: 0.00 ft (KB)
 Time Tool Opened: 17:08:45
 Time Test Ended: 21:55:45
 Interval: **3777.00 ft (KB) To 3834.00 ft (KB) (TVD)**
 Total Depth: 3834.00 ft (KB) (TVD)
 Hole Diameter: 7.88 inches
 Hole Condition: Fair
 Test Type: Conventional Bottom Hole (Reset)
 Tester: Brett Dickinson
 Unit No: 59
 Reference Elevations: 2437.00 ft (KB)
 2430.00 ft (CF)
 KB to GR/CF: 7.00 ft

Serial #: 8018

Inside

Press@RunDepth: psig @ 3778.00 ft (KB)
 Start Date: 2014.02.20 End Date: 2014.02.20
 Start Time: 15:00:05 End Time: 21:55:44
 Capacity: 8000.00 psig
 Last Calib.: 2014.02.20
 Time On Btm:
 Time Off Btm:

TEST COMMENT: IF-BOB in 35 min
 IS-No blow
 FF-5" blow
 FS-No blow



PRESSURE SUMMARY

Time (Min.)	Pressure (psig)	Temp (deg F)	Annotation

Recovery

Length (ft)	Description	Volume (bbl)
319.00	MCW 20%M 80%W	4.20
1.00	Free Oil	0.01

* Recovery from multiple tests

Gas Rates

Choke (inches)	Pressure (psig)	Gas Rate (Mcf/d)



**TRILOBITE
TESTING, INC**

DRILL STEM TEST REPORT

TOOL DIAGRAM

H & C Operating

17-6s-23w Graham,KS

PO Box 56
Plainville, KS 67663-0086

Stowell #17-2

Job Ticket: 56215

DST#: 3

ATTN: Marc Downing

Test Start: 2014.02.20 @ 15:00:00

Tool Information

Drill Pipe:	Length: 3744.00 ft	Diameter: 3.80 inches	Volume: 52.52 bbl	Tool Weight: 2000.00 lb
Heavy Wt. Pipe:	Length: 0.00 ft	Diameter: inches	Volume: 0.00 bbl	Weight set on Packer: 25000.00 lb
Drill Collar:	Length: 30.00 ft	Diameter: 2.25 inches	Volume: 0.15 bbl	Weight to Pull Loose: 45000.00 lb
			<u>Total Volume: 52.67 bbl</u>	Tool Chased 0.00 ft
Drill Pipe Above KB:	17.00 ft			String Weight: Initial 45000.00 lb
Depth to Top Packer:	3777.00 ft			Final 45000.00 lb
Depth to Bottom Packer:	ft			
Interval between Packers:	57.00 ft			
Tool Length:	77.00 ft			
Number of Packers:	2	Diameter: 6.75 inches		

Tool Comments:

Tool Description	Length (ft)	Serial No.	Position	Depth (ft)	Accum. Lengths
------------------	-------------	------------	----------	------------	----------------

Shut In Tool	5.00			3762.00	
Hydraulic tool	5.00			3767.00	
Packer	5.00			3772.00	20.00 Bottom Of Top Packer
Packer	5.00			3777.00	
Stubb	1.00			3778.00	
Recorder	0.00	8018	Inside	3778.00	
Recorder	0.00	8736	Outside	3778.00	
Perforations	2.00			3780.00	
Change Over Sub	1.00			3781.00	
Drill Pipe	30.00			3811.00	
Change Over Sub	1.00			3812.00	
Perforations	19.00			3831.00	
Bullnose	3.00			3834.00	57.00 Bottom Packers & Anchor

Total Tool Length: 77.00



**TRILOBITE
TESTING, INC**

DRILL STEM TEST REPORT

FLUID SUMMARY

H & C Operating

17-6s-23w Graham,KS

PO Box 56
Plainville, KS 67663-0086

Stowell #17-2

Job Ticket: 56215

DST#: 3

ATTN: Marc Downing

Test Start: 2014.02.20 @ 15:00:00

Mud and Cushion Information

Mud Type: Gel Chem

Cushion Type:

Oil API:

deg API

Mud Weight: 9.00 lb/gal

Cushion Length:

ft

Water Salinity:

70000 ppm

Viscosity: 52.00 sec/qt

Cushion Volume:

bbf

Water Loss: 5.99 in³

Gas Cushion Type:

Resistivity: ohm.m

Gas Cushion Pressure:

psig

Salinity: 1300.00 ppm

Filter Cake: inches

Recovery Information

Recovery Table

Length ft	Description	Volume bbf
319.00	MCW 20%M 80%W	4.201
1.00	Free Oil	0.014

Total Length: 320.00 ft Total Volume: 4.215 bbf

Num Fluid Samples: 0

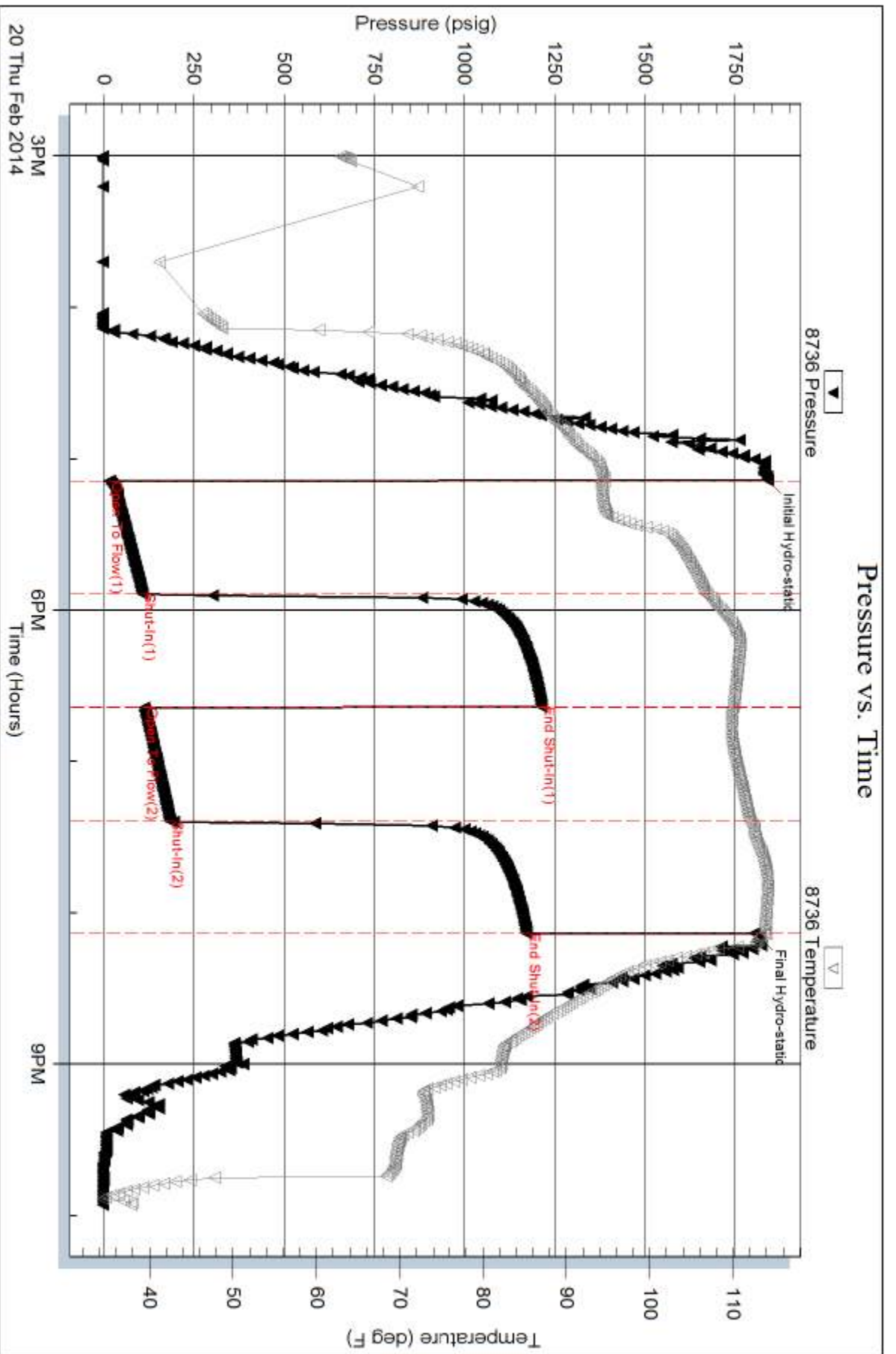
Num Gas Bombs: 0

Serial #:

Laboratory Name:

Laboratory Location:

Recovery Comments:



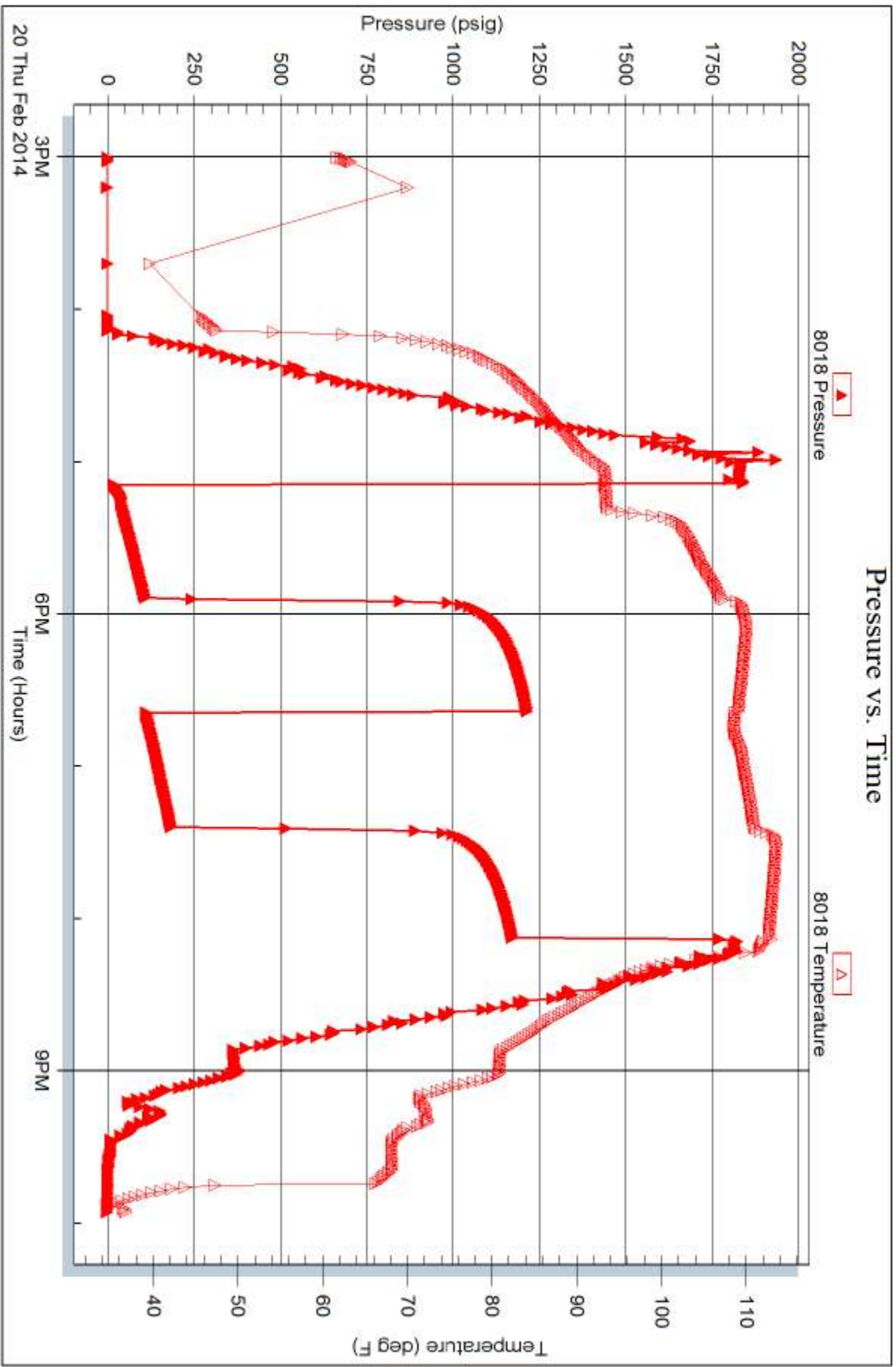
Serial #: 8018

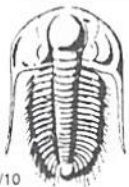
Inside

H & C Operating

Slow ei #17-2

DST Test Number: 3





TRILOBITE TESTING INC.

1515 Commerce Parkway • Hays, Kansas 67601

Test Ticket

NO. 53686

4/10

Well Name & No. Stowell 17-2 Test No. 1 Date 2-19-2014
 Company H&C Operating, INC Elevation _____ KB _____ GL _____
 Address PO Box 54 Plainville, KS 67643-0086
 Co. Rep / Geo. Charles Ramsey Rig American Eagle #3
 Location: Sec. _____ Twp. _____ Rge. _____ Co. Graham State KS

Interval Tested 3635-3698 Zone Tested Toronto & LTC "A"
 Anchor Length 63 Drill Pipe Run 3615 Mud Wt. 8.8
 Top Packer Depth 3630 Drill Collars Run 30 Vis 52
 Bottom Packer Depth 3635 Wt. Pipe Run 0 WL 52
 Total Depth 3698 Chlorides 800 ppm System LCM 2#
 Blow Description FFP - Surface blow thru out
FFP - Surface blow Dico IN 20 min

Rec	Feet of	%gas	%oil	%water	%mud
<u>75</u>	<u>Drly mud</u>				
____	____				
____	____				
____	____				
____	____				

Rec Total 75 BHT 1040 Gravity _____ API RW _____ @ _____ °F Chlorides _____ ppm

(A) Initial Hydrostatic 0798 Test 1150 T-On Location 145
 (B) First Initial Flow 27 Jars _____ T-Started 200
 (C) First Final Flow 43 Safety Joint _____ T-Open 630
 (D) Initial Shut-In 1155 Circ Sub _____ T-Pulled 830
 (E) Second Initial Flow 44 Hourly Standby _____ T-Out 1030
 (F) Second Final Flow 52 Mileage 120 RT 186 Comments _____
 (G) Final Shut-In 1123 Sampler _____
 (H) Final Hydrostatic 1830 Straddle _____
 Shale Packer _____
 Extra Packer _____
 Extra Recorder _____
 Day Standby _____
 Accessibility _____

Initial Open 30
 Initial Shut-In 30
 Final Flow 30
 Final Shut-In 30

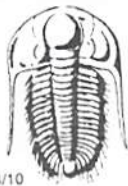
Sub Total 1336

MP/DST Disc't _____

Approved By _____

Our Representative STUART SLOVER

Trilobite Testing Inc. shall not be liable for damaged of any kind of the property or personnel of the one for whom a test is made, or for any loss suffered or sustained, directly or indirectly, through the use of its equipment, or its statements or opinion concerning the results of any test, tools lost or damaged in the hole shall be paid for at cost by the party for whom the test is made.



TRILOBITE TESTING INC.

1515 Commerce Parkway • Hays, Kansas 67601

Test Ticket

NO. 53687

Well Name & No. Stowell 17-2 Test No. 2 Date 2-19-14
 Company H & C Operating Elevation 2435 KB 2430 GL
 Address _____ Rig AM Eagle #3
 Co. Rep / Geo. More Downing Rge. 23w Co. Graham State KS
 Location: Sec. 17 Twp. 6S

Interval Tested 3695 - 3735 Zone Tested LXC C-D
 Anchor Length 40 Drill Pipe Run 3681 Mud Wt. 9.0
 Top Packer Depth 3690 Drill Collars Run 30 Vis 50
 Bottom Packer Depth 3695 Wt. Pipe Run _____ WL 5.6
 Total Depth 3735 Chlorides _____ ppm System LCM _____

Blow Description weak bit blow building to 1.5"
IST no blow
FF - surface blow building to 1.5"
FSI no blow

Rec	Feet of	%gas	%oil	%water	%m
<u>105</u>	<u>WM</u>		<u>10</u>	<u>90</u>	
Rec	Feet of	%gas	%oil	%water	%m
Rec	Feet of	%gas	%oil	%water	%m
Rec	Feet of	%gas	%oil	%water	%m
Rec	Feet of	%gas	%oil	%water	%m
Rec	Feet of	%gas	%oil	%water	%m

Rec Total 105 BHT 105 Gravity _____ API RW _____ @ _____ °F Chlorides _____ ppm
 (A) Initial Hydrostatic 1808 Test 1150
 (B) First Initial Flow 14 Jars _____
 (C) First Final Flow 42 Safety Joint _____
 (D) Initial Shut-In 1140 Circ Sub _____
 (E) Second Initial Flow 46 Hourly Standby _____
 (F) Second Final Flow 61 Mileage 186
 (G) Final Shut-In 1102 Sampler _____
 (H) Final Hydrostatic 1761 Straddle _____

Initial Open 30 Ruined Shale Packer _____
 Initial Shut-In 30 Ruined Packer _____
 Final Flow 30 Extra Copies _____
 Final Shut-In 30 Extra Recorder _____
 Sub Total 0 Day Standby _____
 Total 1336 Accessibility _____
 MP/DST Disc't _____
 Sub Total 1336

Approved By _____ Our Representative _____
 Trilobite Testing Inc. shall not be liable for damaged of any kind of the property or personnel of the one for whom a test is made, or for any loss suffered or sustained, directly or indirectly, through the use of its equipment, or its statements or opinion concerning the results of any test, tools lost or damaged in the hole shall be paid for at cost by the party for whom the test is made.



TRILOBITE TESTING INC.

1515 Commerce Parkway • Hays, Kansas 67601

Test Ticket

NO. 56215

Well Name & No. Stowell #17-2 Test No. 3 Date 2/20/14
 Company H&C Oil Operating Inc. Elevation 2435 KB 2430 GL
 Address PO Box 86 Plainville KS 67663
 Co. Rep / Geo. _____ Rig American Eagle #3
 Location: Sec. 17 Twp. 6 Rge. 23 Co. Graham State KS

Interval Tested 3777-3834 Zone Tested KC "H-J"
 Anchor Length 57 Drill Pipe Run _____ Mud Wt. 9.2
 Top Packer Depth 3772 Drill Collars Run 30 Vis 52
 Bottom Packer Depth 3777 Wt. Pipe Run _____ WL 6.0
 Total Depth 3834 Chlorides 1,300 ppm System LCM _____
 Blow Description JF-BOB in 35 min
FSE - No blow
FF - 5 in blow
FSE - No blow

Rec	Feet of	%gas	%oil	%water	%mud
<u>1</u>	<u>Free Oil</u>				
<u>319</u>	<u>Mcw</u>		<u>80</u>	<u>20</u>	
_____	_____				
_____	_____				
_____	_____				

Rec Total 320 BHT 114 Gravity _____ API RW .2 @ 40 ° F Chlorides 70000 ppm

(A) Initial Hydrostatic 1,840 Test 1150 T-On Location 14:05
 (B) First Initial Flow 16 Jars _____ T-Started 15:00
 (C) First Final Flow 107 Safety Joint _____ T-Open 17:10
 (D) Initial Shut-In 1,214 Circ Sub _____ T-Pulled 20:10
 (E) Second Initial Flow 112 Hourly Standby _____ T-Out 22:00
 (F) Second Final Flow 184 Mileage 1.51 rt Comments _____
 (G) Final Shut-In 1,173 Sampler _____
 (H) Final Hydrostatic 1,817 Straddle _____ Ruined Shale Packer _____
 Shale Packer _____ Ruined Packer _____
 Extra Packer _____ Extra Copies _____
 Initial Open 45 Extra Recorder _____ Sub Total 0
 Initial Shut-In 45 Day Standby _____ Total 1522
 Final Flow 45 Accessibility _____ MP/DST Disc't _____
 Final Shut-In 45 Sub Total 1522

Approved By _____ Our Representative Butcher

Trilobite Testing Inc. shall not be liable for damaged of any kind of the property or personnel of the one for whom a test is made, or for any loss suffered or sustained, directly or indirectly, through the use of its equipment, or its statements or opinion concerning the results of any test, tools lost or damaged in the hole shall be paid for at cost by the party for whom the test is made.