



**TRILOBITE TESTING, INC.**

# DRILL STEM TEST REPORT

Pioneer Resources

**25-14s-30w Gove Co. KS**

80 Windmill Drive  
Phillipsburg KS, 67661

**Groom #1**

Job Ticket: 53085

**DST#: 4**

ATTN: Charlie Strudavant

Test Start: 2013.07.02 @ 04:45:00

## GENERAL INFORMATION:

Formation: **Altamont - Myric Sta**

Deviated: No Whipstock: ft (KB)

Time Tool Opened: 07:22:45

Time Test Ended: 12:40:15

Test Type: Conventional Bottom Hole (Reset)

Tester: Jace McKinney

Unit No: 46

**Interval: 4132.00 ft (KB) To 4230.00 ft (KB) (TVD)**

Reference Elevations: 2688.00 ft (KB)

Total Depth: 4230.00 ft (KB) (TVD)

2679.00 ft (CF)

Hole Diameter: 7.88 inches Hole Condition: Fair

KB to GR/CF: 9.00 ft

**Serial #: 8675**

**Inside**

Press @ Run Depth: 43.97 psig @ 4133.00 ft (KB)

Capacity: 8000.00 psig

Start Date: 2013.07.02

End Date:

2013.07.02

Last Calib.: 2013.07.02

Start Time: 04:45:15

End Time:

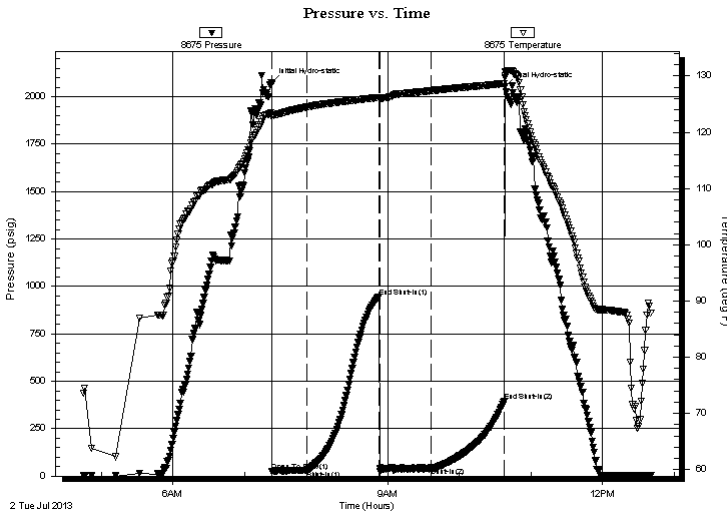
12:40:15

Time On Btm: 2013.07.02 @ 07:22:30

Time Off Btm: 2013.07.02 @ 10:38:30

**TEST COMMENT:** Built to 4" blow  
No return blow  
Built to 11" blow  
No return blow

## PRESSURE SUMMARY



| Time (Min.) | Pressure (psig) | Temp (deg F) | Annotation           |
|-------------|-----------------|--------------|----------------------|
| 0           | 2072.42         | 123.47       | Initial Hydro-static |
| 1           | 23.37           | 122.82       | Open To Flow (1)     |
| 30          | 31.36           | 124.50       | Shut-In(1)           |
| 90          | 945.17          | 126.18       | End Shut-In(1)       |
| 91          | 26.19           | 125.97       | Open To Flow (2)     |
| 134         | 43.97           | 127.39       | Shut-In(2)           |
| 195         | 394.84          | 128.66       | End Shut-In(2)       |
| 196         | 2052.66         | 130.15       | Final Hydro-static   |

## Recovery

| Length (ft) | Description          | Volume (bbl) |
|-------------|----------------------|--------------|
| 0.00        | 186 Feet Gas In Pipe | 0.00         |
| 50.00       | ocm 30%O 70%M        | 0.70         |
|             |                      |              |
|             |                      |              |
|             |                      |              |

\* Recovery from multiple tests

## Gas Rates

|  | Choke (inches) | Pressure (psig) | Gas Rate (Mcf/d) |
|--|----------------|-----------------|------------------|
|  |                |                 |                  |



**TRILOBITE  
TESTING, INC.**

# DRILL STEM TEST REPORT

**FLUID SUMMARY**

Pioneer Resources

**25-14s-30w Gove Co. KS**

80 Windmill Drive  
Phillipsburg KS, 67661

**Groom #1**

Job Ticket: 53085

**DST#: 4**

ATTN: Charlie Strudavant

Test Start: 2013.07.02 @ 04:45:00

## Mud and Cushion Information

Mud Type: Gel Chem

Cushion Type:

Oil API:

deg API

Mud Weight: 9.00 lb/gal

Cushion Length:

ft

Water Salinity:

ppm

Viscosity: 58.00 sec/qt

Cushion Volume:

bbbl

Water Loss: 6.80 in<sup>3</sup>

Gas Cushion Type:

Resistivity: ohm.m

Gas Cushion Pressure:

psig

Salinity: 1200.00 ppm

Filter Cake: 1.00 inches

## Recovery Information

Recovery Table

| Length<br>ft | Description          | Volume<br>bbbl |
|--------------|----------------------|----------------|
| 0.00         | 186 Feet Gas In Pipe | 0.000          |
| 50.00        | ocm 30%O 70%M        | 0.701          |

Total Length: 50.00 ft      Total Volume: 0.701 bbl

Num Fluid Samples: 0

Num Gas Bombs: 0

Serial #:

Laboratory Name:

Laboratory Location:

Recovery Comments:

# Pressure vs. Time

