



DRILL STEM TEST REPORT

Prepared For: **RJM Company**

P.O. Box 256
Claffin ks, 67525-0256

ATTN: Jim Musgrove

Kevin Wirth #1

25/16s/14w/Barton

Start Date: 2014.01.21 @ 02:55:00

End Date: 2014.01.21 @ 11:34:30

Job Ticket #: 18231 DST #: 1

Superior Testers Enterprises LLC
PO Box 138 Great Bend KS 67530
1-800-792-6902

Printed: 2014.01.21 @ 11:56:00

RJM Company
25/16s/14w/Barton
Kevin Wirth #1
DST # 1
LKC "A-F"
2014.01.21



DRILL STEM TEST REPORT

RJM Company
 P.O. Box 256
 Claflin ks, 67525-0256
 ATTN: Jim Musgrove

25/16s/14w/Barton
Kevin Wirth #1
 Job Ticket: 18231 **DST#: 1**
 Test Start: 2014.01.21 @ 02:55:00

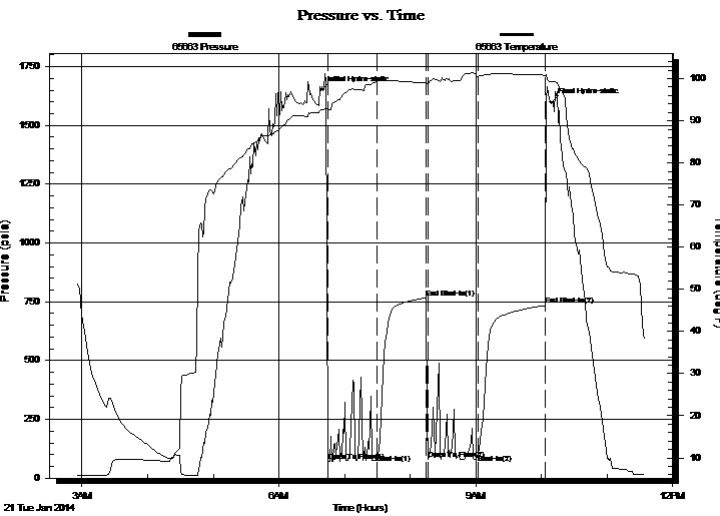
GENERAL INFORMATION:

Formation: **LKC "A-F"**
 Deviated: No Whipstock: ft (KB)
 Test Type: Conventional Bottom Hole (Initial)
 Time Tool Opened: 06:44:30 Tester: Shane Konzem
 Time Test Ended: 11:34:30 Unit No: 3325/50/Great Bend
 Interval: **3204.00 ft (KB) To 3284.00 ft (KB) (TVD)** Reference Elevations: 1977.00 ft (KB)
 Total Depth: 3284.00 ft (KB) (TVD) 1968.00 ft (CF)
 Hole Diameter: 7.88 inches Hole Condition: Poor KB to GR/CF: 9.00 ft

Serial #: 65663

Press @ RunDepth: 99.20 psia @ ft (KB) Capacity: 5000.00 psia
 Start Date: 2014.01.21 End Date: 2014.01.21 Last Calib.: 2014.01.21
 Start Time: 02:55:00 End Time: 11:34:30 Time On Btm: 2014.01.21 @ 06:38:30
 Time Off Btm: 2014.01.21 @ 10:09:00

TEST COMMENT: 1st Open/ 45 Minutes. Fair blow built to 5 inches in 5 gallon bucket of deisel.
 1st Shut In/ 45 Minutes. No blow Back.
 2nd Open/ 45 Minutes. Fair blow built to 3.5 inches into 5 gallon bucket of deisel.
 2nd Shut In/ 60 Minutes. No blow back.



PRESSURE SUMMARY

Time (Min.)	Pressure (psia)	Temp (deg F)	Annotation
0	1649.76	92.62	Initial Hydro-static
6	72.91	92.92	Open To Flow (1)
51	99.35	99.37	Shut-In(1)
96	765.76	98.99	End Shut-In(1)
98	81.74	98.64	Open To Flow (2)
144	99.20	100.51	Shut-In(2)
205	734.68	100.84	End Shut-In(2)
211	1597.99	99.25	Final Hydro-static

Recovery

Length (ft)	Description	Volume (bbl)
40.00	100% mud	0.56

Gas Rates

Choke (inches)	Pressure (psia)	Gas Rate (Mcf/d)



DRILL STEM TEST REPORT

RJM Company
 P.O. Box 256
 Claflin ks, 67525-0256
 ATTN: Jim Musgrove

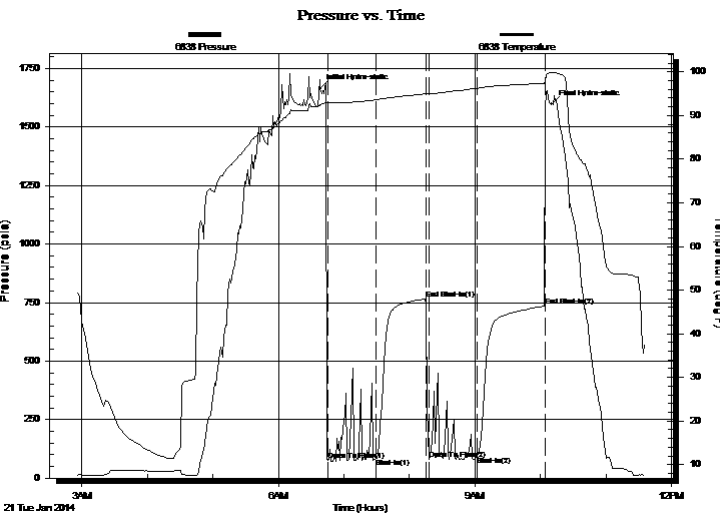
25/16s/14w/Barton
Kevin Wirth #1
 Job Ticket: 18231 **DST#: 1**
 Test Start: 2014.01.21 @ 02:55:00

GENERAL INFORMATION:

Formation: **LKC "A-F"**
 Deviated: No Whipstock: ft (KB)
 Time Tool Opened: 06:44:30
 Time Test Ended: 11:34:30
 Interval: **3204.00 ft (KB) To 3284.00 ft (KB) (TVD)**
 Total Depth: 3284.00 ft (KB) (TVD)
 Hole Diameter: 7.88 inches Hole Condition: Poor
 Test Type: Conventional Bottom Hole (Initial)
 Tester: Shane Konzem
 Unit No: 3325/50/Great Bend
 Reference Elevations: 1977.00 ft (KB)
 1968.00 ft (CF)
 KB to GR/CF: 9.00 ft

Serial #: 6838 Outside
 Press @ RunDepth: 735.14 psia @ 3281.61 ft (KB) Capacity: 5000.00 psia
 Start Date: 2014.01.21 End Date: 2014.01.21 Last Calib.: 2014.01.21
 Start Time: 02:55:00 End Time: 11:35:30 Time On Btm: 2014.01.21 @ 06:38:00
 Time Off Btm: 2014.01.21 @ 10:10:30

TEST COMMENT: 1st Open/ 45 Minutes. Fair blow built to 5 inches in 5 gallon bucket of deisel.
 1st Shut In/ 45 Minutes. No blow Back.
 2nd Open/ 45 Minutes. Fair blow built to 3.5 inches into 5 gallon bucket of deisel.
 2nd Shut In/ 60 Minutes. No blow back.



PRESSURE SUMMARY

Time (Min.)	Pressure (psia)	Temp (deg F)	Annotation
0	1662.63	92.49	Initial Hydro-static
7	74.82	92.92	Open To Flow (1)
52	84.85	93.62	Shut-In(1)
97	766.36	94.96	End Shut-In(1)
100	79.07	94.91	Open To Flow (2)
144	93.56	96.25	Shut-In(2)
206	735.14	97.42	End Shut-In(2)
213	1597.69	99.85	Final Hydro-static

Recovery

Length (ft)	Description	Volume (bbl)
40.00	100% mud	0.56

Gas Rates

	Choke (inches)	Pressure (psia)	Gas Rate (Mcf/d)



DRILL STEM TEST REPORT

TOOL DIAGRAM

RJM Company

25/16s/14w/Barton

P.O. Box 256
Clafin ks, 67525-0256

Kevin Wirth #1

Job Ticket: 18231

DST#: 1

ATTN: Jim Musgrove

Test Start: 2014.01.21 @ 02:55:00

Tool Information

Drill Pipe:	Length: 3204.00 ft	Diameter: 3.80 inches	Volume: 44.94 bbl	Tool Weight: 2000.00 lb
Heavy Wt. Pipe:	Length: 0.00 ft	Diameter: 0.00 inches	Volume: 0.00 bbl	Weight set on Packer: 20000.00 lb
Drill Collar:	Length: 0.00 ft	Diameter: 0.00 inches	Volume: 0.00 bbl	Weight to Pull Loose: 60000.00 lb
			<u>Total Volume: 44.94 bbl</u>	Tool Chased 1.00 ft
Drill Pipe Above KB:	20.00 ft			String Weight: Initial 42000.00 lb
Depth to Top Packer:	3204.00 ft			Final 43000.00 lb
Depth to Bottom Packer:	ft			
Interval between Packers:	80.61 ft			
Tool Length:	100.61 ft			
Number of Packers:	2	Diameter: 6.75 inches		

Tool Comments:

Tool Description	Length (ft)	Serial No.	Position	Depth (ft)	Accum. Lengths
------------------	-------------	------------	----------	------------	----------------

Shut In Tool	5.00			3189.00	
Hydraulic Tool	5.00			3194.00	
Packer	5.00			3199.00	20.00 Bottom Of Top Packer
Packer	5.00			3204.00	
Change Over Sub	0.75			3204.75	
Drill Pipe	32.11			3236.86	
Change Over Sub	0.75			3237.61	
Anchor	42.00			3279.61	
Recorder	1.00	6663	Inside	3280.61	
Recorder	1.00	6838	Outside	3281.61	
Bullnose	3.00			3284.61	80.61 Bottom Packers & Anchor

Total Tool Length: 100.61



DRILL STEM TEST REPORT

FLUID SUMMARY

RJM Company

25/16s/14w/Barton

P.O. Box 256
Claflin ks, 67525-0256

Kevin Wirth #1

Job Ticket: 18231

DST#: 1

ATTN: Jim Musgrove

Test Start: 2014.01.21 @ 02:55:00

Mud and Cushion Information

Mud Type: Gel Chem

Cushion Type:

Oil API:

deg API

Mud Weight: 9.00 lb/gal

Cushion Length:

ft

Water Salinity:

ppm

Viscosity: 55.00 sec/qt

Cushion Volume:

bbbl

Water Loss: 8.00 in³

Gas Cushion Type:

Resistivity: ohm.m

Gas Cushion Pressure:

psia

Salinity: 4800.00 ppm

Filter Cake: inches

Recovery Information

Recovery Table

Length ft	Description	Volume bbl
40.00	100% mud	0.561

Total Length: 40.00 ft Total Volume: 0.561 bbl

Num Fluid Samples: 0

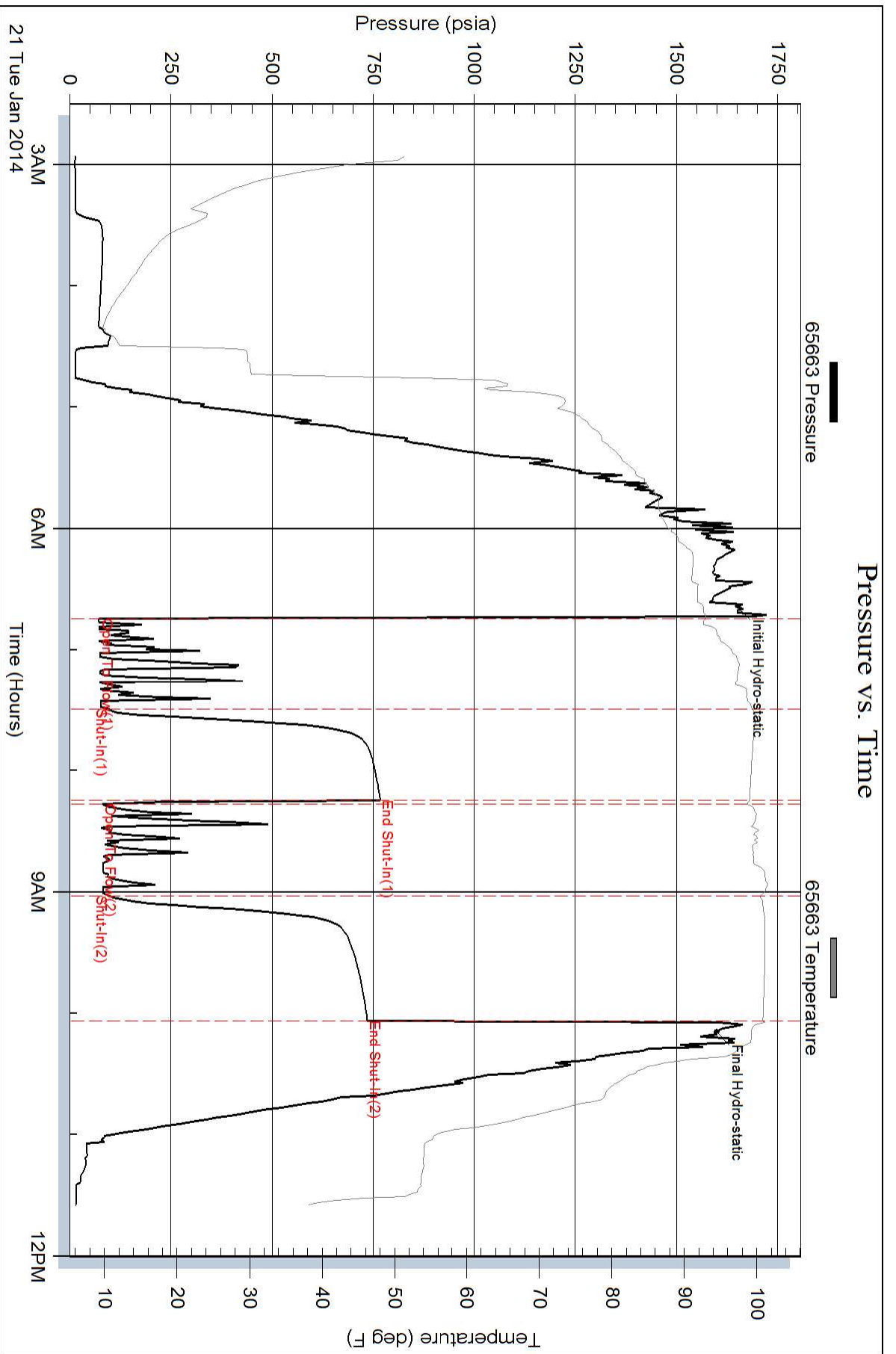
Num Gas Bombs: 0

Serial #:

Laboratory Name:

Laboratory Location:

Recovery Comments:



Serial #: 6838

Outside RJM Company

Kevin Wrth #1

DST Test Number: 1

