



## DRILL STEM TEST REPORT

Prepared For: **Trans Pacific Oil Corporation**

100 South Main STE 200  
Wichita Kansas 67202

ATTN: Alex Chapin

**Allison B #8**

**13-11s-19w-Ellis**

Start Date: 2013.11.29 @ 01:31:00

End Date: 2013.11.29 @ 06:33:00

Job Ticket #: 18547                      DST #: 2

Superior Testers Enterprises LLC  
PO Box 138 Great Bend KS 67530  
1-800-792-6902

Printed: 2013.11.29 @ 16:49:23



# DRILL STEM TEST REPORT

Trans Pacific Oil Corporation  
 100 South Main STE 200  
 Wichita Kansas 67202  
 ATTN: Alex Chapin

**13-11s-19w-Ellis**  
**Allison B #8**  
 Job Ticket: 18547 **DST#: 2**  
 Test Start: 2013.11.29 @ 01:31:00

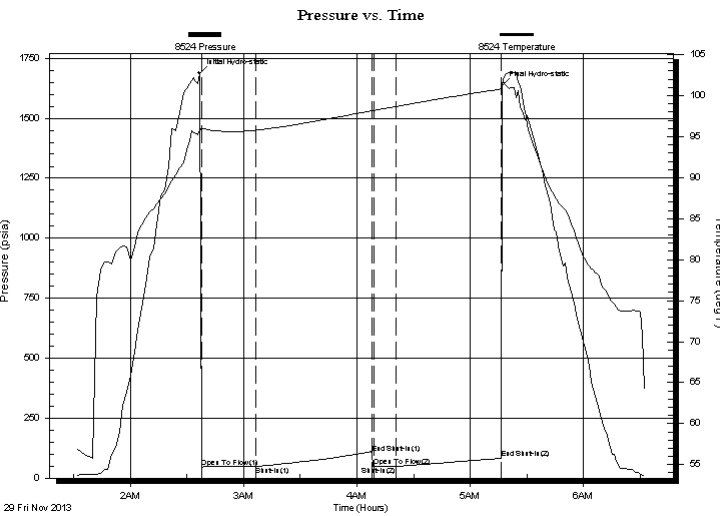
## GENERAL INFORMATION:

Formation: **Lansing H-I-J**  
 Deviated: No Whipstock: ft (KB)  
 Time Tool Opened: 02:37:30  
 Time Test Ended: 06:33:00  
 Interval: **3351.00 ft (KB) To 3392.00 ft (KB) (TVD)**  
 Total Depth: 3392.00 ft (KB) (TVD)  
 Hole Diameter: 7.88 inches Hole Condition: Fair  
 Test Type: Conventional Bottom Hole (Initial)  
 Tester: Dustin Ellis  
 Unit No: 3315-Great Bend-162  
 Reference Elevations: 1961.00 ft (KB)  
 1956.00 ft (CF)  
 KB to GR/CF: 5.00 ft

## Serial #: 8524 Outside

Press @ RunDepth: 48.50 psia @ 3388.00 ft (KB) Capacity: 5000.00 psia  
 Start Date: 2013.11.29 End Date: 2013.11.29 Last Calib.: 2013.11.29  
 Start Time: 01:31:00 End Time: 06:33:00 Time On Btm: 2013.11.29 @ 02:36:30  
 Time Off Btm: 2013.11.29 @ 05:17:00

**TEST COMMENT:** 1st Open 30 minutes Very weak surface blow through out.  
 1st Shut in 60 minutes No blow back  
 2nd Open 15 minutes Very weak surface blow that died off after 3 minutes.  
 2nd Shut in 60 minutes No blow back



## PRESSURE SUMMARY

Time (Min.)	Pressure (psia)	Temp (deg F)	Annotation
0	1687.91	95.74	Initial Hydro-static
1	45.96	96.14	Open To Flow (1)
30	48.09	95.78	Shut-In(1)
92	104.75	98.15	End Shut-In(1)
93	49.03	98.20	Open To Flow (2)
104	48.50	98.67	Shut-In(2)
160	82.37	100.81	End Shut-In(2)
161	1637.35	101.22	Final Hydro-static

## Recovery

Length (ft)	Description	Volume (bbl)
6.00	Very lightly oil spotted mud ,Mud 100%	0.08

## Gas Rates

Choke (inches)	Pressure (psia)	Gas Rate (Mcf/d)



# DRILL STEM TEST REPORT

Trans Pacific Oil Corporation

**13-11s-19w-Ellis**

100 South Main STE 200  
Wichita Kansas 67202

**Allison B #8**

Job Ticket: 18547

**DST#: 2**

ATTN: Alex Chapin

Test Start: 2013.11.29 @ 01:31:00

## GENERAL INFORMATION:

Formation: **Lansing H-I-J**

Deviated: No Whipstock: ft (KB)

Time Tool Opened: 02:37:30

Time Test Ended: 06:33:00

Test Type: Conventional Bottom Hole (Initial)

Tester: Dustin Ellis

Unit No: 3315-Great Bend-162

**Interval: 3351.00 ft (KB) To 3392.00 ft (KB) (TVD)**

Reference Elevations: 1961.00 ft (KB)

Total Depth: 3392.00 ft (KB) (TVD)

1956.00 ft (CF)

Hole Diameter: 7.88 inches Hole Condition: Fair

KB to GR/CF: 5.00 ft

**Serial #: 6839 Inside**

Press @ RunDepth: 80.44 psia @ 3389.00 ft (KB)

Capacity: 5000.00 psia

Start Date: 2013.11.29 End Date: 2013.11.29

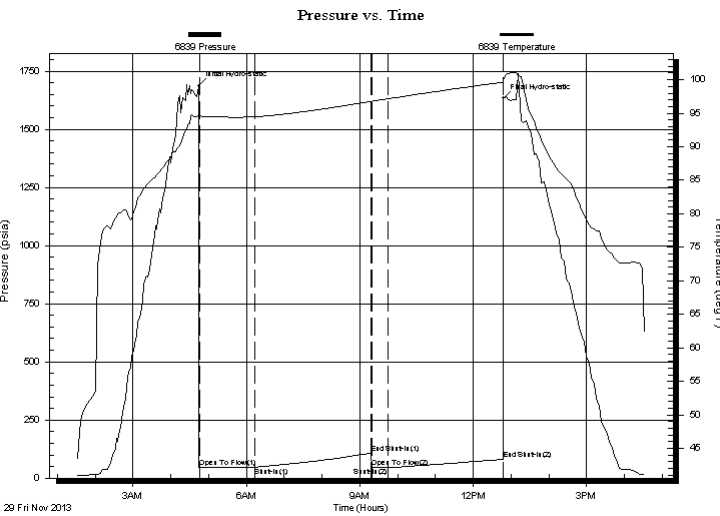
Last Calib.: 2013.11.29

Start Time: 01:31:00 End Time: 16:33:00

Time On Btm: 2013.11.29 @ 04:44:30

Time Off Btm: 2013.11.29 @ 12:48:00

**TEST COMMENT:** 1st Open 30 minutes Very weak surface blow through out.  
1st Shut in 60 minutes No blow back  
2nd Open 15 minutes Very weak surface blow that died off after 3 minutes.  
2nd Shut in 60 minutes No blow back



## PRESSURE SUMMARY

Time (Min.)	Pressure (psia)	Temp (deg F)	Annotation
0	1685.58	94.83	Initial Hydro-static
1	44.75	94.30	Open To Flow (1)
88	46.76	94.48	Shut-In(1)
274	108.47	96.77	End Shut-In(1)
275	48.01	96.76	Open To Flow (2)
300	46.79	97.15	Shut-In(2)
483	80.44	99.62	End Shut-In(2)
484	1632.80	100.07	Final Hydro-static

## Recovery

Length (ft)	Description	Volume (bbl)
6.00	Very lightly oil spotted mud ,Mud 100%	0.08

## Gas Rates

Choke (inches)	Pressure (psia)	Gas Rate (Mcf/d)



# DRILL STEM TEST REPORT

**TOOL DIAGRAM**

Trans Pacific Oil Corporation

**13-11s-19w-Ellis**

100 South Main STE 200  
Wichita Kansas 67202

**Allison B #8**

Job Ticket: 18547

**DST#: 2**

ATTN: Alex Chapin

Test Start: 2013.11.29 @ 01:31:00

## Tool Information

Drill Pipe:	Length: 3362.00 ft	Diameter: 3.80 inches	Volume: 47.16 bbl	Tool Weight: 2000.00 lb
Heavy Wt. Pipe:	Length: 0.00 ft	Diameter: 0.00 inches	Volume: 0.00 bbl	Weight set on Packer: 20000.00 lb
Drill Collar:	Length: 0.00 ft	Diameter: 0.00 inches	Volume: 0.00 bbl	Weight to Pull Loose: 53000.00 lb
			<u>Total Volume: 47.16 bbl</u>	Tool Chased 0.00 ft
Drill Pipe Above KB:	31.00 ft			String Weight: Initial 42000.00 lb
Depth to Top Packer:	3351.00 ft			Final 42000.00 lb
Depth to Bottom Packer:	ft			
Interval between Packers:	41.00 ft			
Tool Length:	61.00 ft			
Number of Packers:	2	Diameter: 6.75 inches		

Tool Comments:

Tool Description	Length (ft)	Serial No.	Position	Depth (ft)	Accum. Lengths
------------------	-------------	------------	----------	------------	----------------

Shut-In Tool	5.00			3336.00	
Hydraulic Tool	5.00			3341.00	
Packer	5.00			3346.00	20.00 Bottom Of Top Packer
Packer	5.00			3351.00	
Anchor	36.00			3387.00	
Recorder	1.00	8524	Outside	3388.00	
Recorder	1.00	6839	Inside	3389.00	
Bull Plug	3.00			3392.00	41.00 Bottom Packers & Anchor

**Total Tool Length: 61.00**



# DRILL STEM TEST REPORT

## FLUID SUMMARY

Trans Pacific Oil Corporation

**13-11s-19w-Ellis**

100 South Main STE 200  
Wichita Kansas 67202

**Allison B #8**

Job Ticket: 18547

**DST#: 2**

ATTN: Alex Chapin

Test Start: 2013.11.29 @ 01:31:00

### Mud and Cushion Information

Mud Type: Gel Chem

Cushion Type:

Oil API:

deg API

Mud Weight: 9.00 lb/gal

Cushion Length:

ft

Water Salinity:

ppm

Viscosity: 47.00 sec/qt

Cushion Volume:

bbbl

Water Loss: 6.80 in<sup>3</sup>

Gas Cushion Type:

Resistivity: ohm.m

Gas Cushion Pressure:

psia

Salinity: 2100.00 ppm

Filter Cake: 1.00 inches

### Recovery Information

Recovery Table

Length ft	Description	Volume bbbl
6.00	Very lightly oil spotted mud ,Mud 100%	0.084

Total Length: 6.00 ft      Total Volume:                      bbl

Num Fluid Samples: 0

Num Gas Bombs: 0

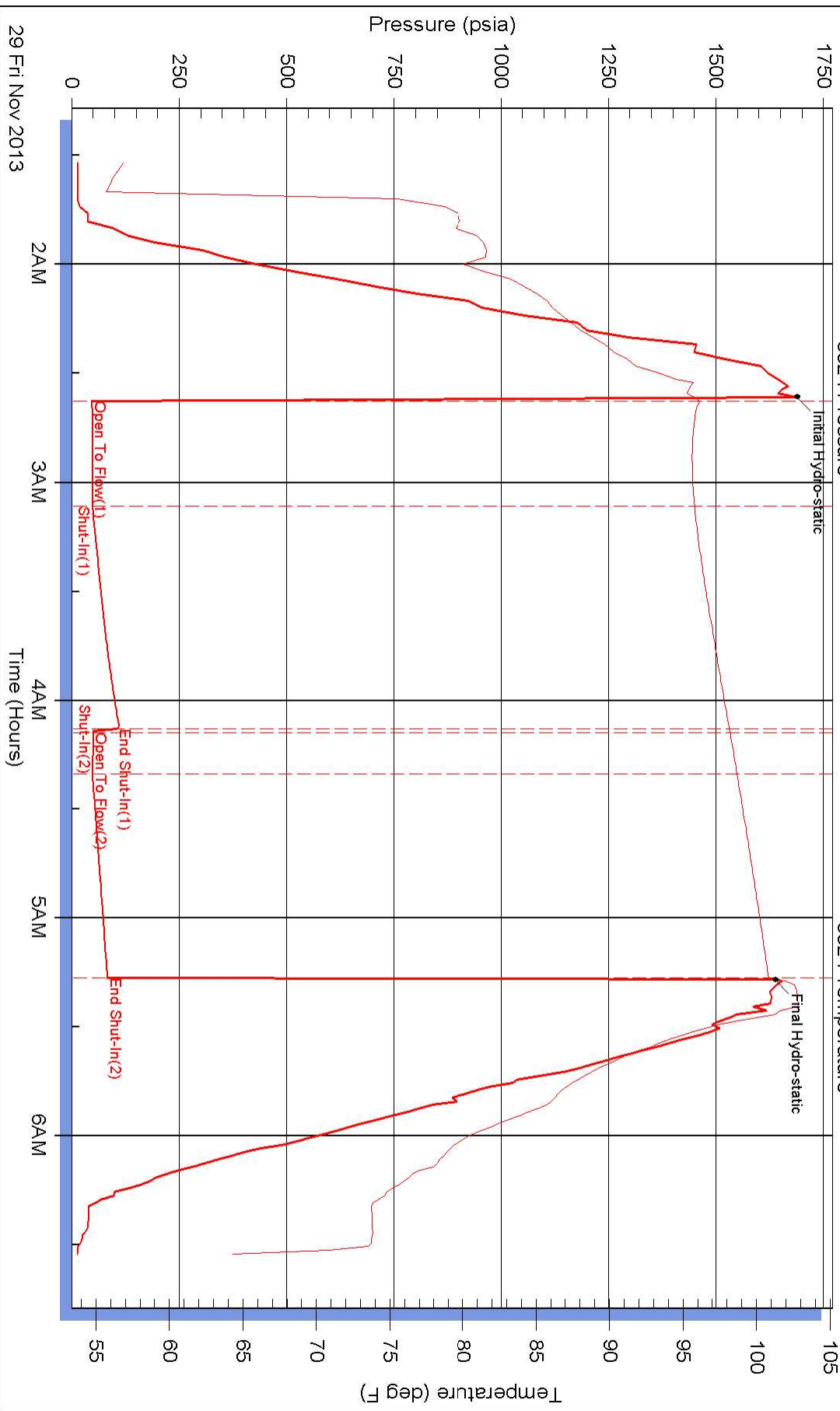
Serial #:

Laboratory Name:

Laboratory Location:

Recovery Comments:

### Pressure vs. Time



Serial #: 6839

Inside

Trans Pacific Oil Corporation

Allison B #8

DST Test Number: 2

