



**TRILOBITE TESTING, INC**

# DRILL STEM TEST REPORT

Shakespeare Oil Co.  
 202 West Main St.  
 Salem IL  
 62881  
 ATTN: Mark Herdon

**25-16-34 Scott Co. KS**

**Carson 2-25**

Job Ticket: 56744      **DST#: 2**  
 Test Start: 2014.02.11 @ 03:30:15

## GENERAL INFORMATION:

Formation: **Marmaton A**  
 Deviated: No Whipstock:                      ft (KB)  
 Time Tool Opened: 06:29:15  
 Time Test Ended: 12:45:30  
 Interval: **4382.00 ft (KB) To 4447.00 ft (KB) (TVD)**  
 Total Depth: 4447.00 ft (KB) (TVD)  
 Hole Diameter: 7.88 inches Hole Condition: Fair  
 Test Type: Conventional Bottom Hole (Reset)  
 Tester: Mike Roberts  
 Unit No: 65  
 Reference Elevations: 3109.00 ft (KB)  
 3099.00 ft (CF)  
 KB to GR/CF: 10.00 ft

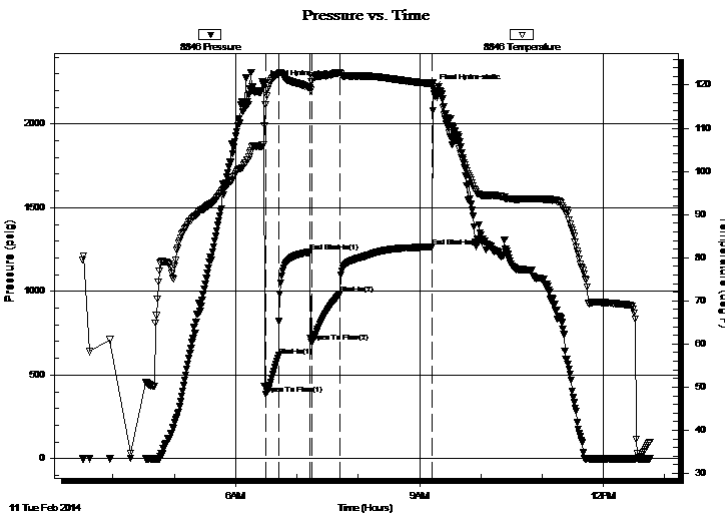
## Serial #: 8846

Inside

Press@RunDepth: 984.39 psig @ 4383.00 ft (KB)      Capacity: 8000.00 psig  
 Start Date: 2014.02.11      End Date: 2014.02.11      Last Calib.: 2014.02.11  
 Start Time: 03:30:15      End Time: 12:45:30      Time On Btm: 2014.02.11 @ 06:27:15  
 Time Off Btm: 2014.02.11 @ 09:13:30

TEST COMMENT: IF:BOB in 1 min.  
 IS:BOB in 8 min.  
 FF:BOB in 1min.  
 FS:BOB in 6 min.

## PRESSURE SUMMARY



Time (Min.)	Pressure (psig)	Temp (deg F)	Annotation
0	2233.98	106.22	Initial Hydro-static
2	386.07	115.48	Open To Flow (1)
15	615.63	122.58	Shut-In(1)
46	1234.46	119.30	End Shut-In(1)
47	697.84	120.84	Open To Flow (2)
75	984.39	122.86	Shut-In(2)
166	1265.78	120.29	End Shut-In(2)
167	2213.17	120.50	Final Hydro-static

## Recovery

Length (ft)	Description	Volume (bbl)
2294.00	gco 30%g 70%o	32.18
248.00	mco 10%m 20%g 70%o	3.48

\* Recovery from multiple tests

## Gas Rates

Choke (inches)	Pressure (psig)	Gas Rate (Mcf/d)



**TRILOBITE  
TESTING, INC**

# DRILL STEM TEST REPORT

## FLUID SUMMARY

Shakespeare Oil Co.

**25-16-34 Scott Co. KS**

202 West Main St.  
Salem IL  
62881

**Carson 2-25**

Job Ticket: 56744

**DST#: 2**

ATTN: Mark Herdon

Test Start: 2014.02.11 @ 03:30:15

### Mud and Cushion Information

Mud Type: Gel Chem

Cushion Type:

Oil API:

31 deg API

Mud Weight: 9.00 lb/gal

Cushion Length:

ft

Water Salinity:

0 ppm

Viscosity: 54.00 sec/qt

Cushion Volume:

bbbl

Water Loss: 9.56 in<sup>3</sup>

Gas Cushion Type:

Resistivity: 0.00 ohm.m

Gas Cushion Pressure:

psig

Salinity: 6000.00 ppm

Filter Cake: 2.00 inches

### Recovery Information

Recovery Table

Length ft	Description	Volume bbl
2294.00	gco 30%g 70%o	32.179
248.00	mcgo 10%m 20%g 70%o	3.479

Total Length: 2542.00 ft      Total Volume: 35.658 bbl

Num Fluid Samples: 0

Num Gas Bombs: 0

Serial #:

Laboratory Name:

Laboratory Location:

Recovery Comments: API= 31@ 60\* corrected to 31

