



**TRILOBITE TESTING, INC**

# DRILL STEM TEST REPORT

Becker Oil Corp.

**30=32s-22w Clark Ks.**

P.O.Box 1150  
Ponca City, Ok.74602

**Mount Casino #1**

Job Ticket: 51782

**DST#: 2**

ATTN: Clyde M. Becker Jr.

Test Start: 2013.11.23 @ 16:44:23

## GENERAL INFORMATION:

Formation: **Swope**

Deviated: No Whipstock: ft (KB)

Time Tool Opened: 18:52:53

Time Test Ended: 00:35:38

Test Type: Conventional Bottom Hole (Reset)

Tester: Gary Pevoteaux

Unit No: 56

**Interval: 4811.00 ft (KB) To 4915.00 ft (KB) (TVD)**

Reference Elevations: 2083.00 ft (KB)

Total Depth: 4528.00 ft (KB) (TVD)

2073.00 ft (CF)

Hole Diameter: 7.88 inches Hole Condition: Fair

KB to GR/CF: 10.00 ft

**Serial #: 8352 Inside**

Press@RunDepth: 131.31 psig @ 4812.00 ft (KB)

Capacity: 8000.00 psig

Start Date: 2013.11.23

End Date:

2013.11.24

Last Calib.:

2013.11.24

Start Time: 16:44:28

End Time:

00:35:37

Time On Btm:

2013.11.23 @ 18:50:53

Time Off Btm:

2013.11.23 @ 22:13:38

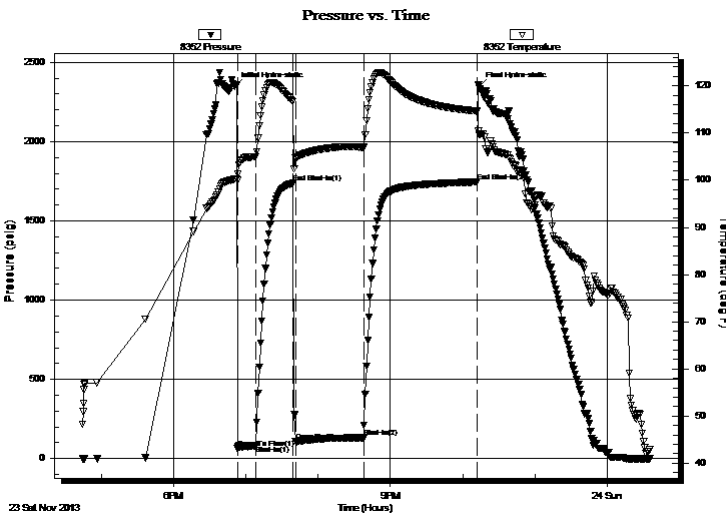
TEST COMMENT: IF:Strong blow . B.O.B. in 30 secs.GTS in 9 mins.(see gas flow report)

IS:Weak blow . 1/2".

FF:Strong blow . (see gas flow report)

FS:Weak blow . 1 - 2".

## PRESSURE SUMMARY



Time (Min.)	Pressure (psig)	Temp (deg F)	Annotation
0	2349.41	100.24	Initial Hydro-static
2	61.87	99.96	Open To Flow (1)
18	81.92	104.99	Shut-In(1)
49	1737.99	116.64	End Shut-In(1)
51	106.90	104.74	Open To Flow (2)
107	131.31	106.92	Shut-In(2)
201	1745.49	114.64	End Shut-In(2)
203	2346.67	109.65	Final Hydro-static

## Recovery

Length (ft)	Description	Volume (bbl)
205.00	GCM 8%g 92%m	1.78

\* Recovery from multiple tests

## Gas Rates

	Choke (inches)	Pressure (psig)	Gas Rate (Mcf/d)
First Gas Rate	0.25	5.00	30.46
Last Gas Rate	0.38	39.00	194.88
Max. Gas Rate	0.38	39.00	194.88



**TRILOBITE  
TESTING, INC**

# DRILL STEM TEST REPORT

**FLUID SUMMARY**

Becker Oil Corp.

**30=32s-22w Clark Ks.**

P.O.Box 1150  
Ponca City, Ok.74602

**Mount Casino #1**

Job Ticket: 51782

**DST#: 2**

ATTN: Clyde M. Becker Jr.

Test Start: 2013.11.23 @ 16:44:23

## Mud and Cushion Information

Mud Type: Gel Chem

Cushion Type:

Oil API:

deg API

Mud Weight: 9.00 lb/gal

Cushion Length:

ft

Water Salinity:

10000 ppm

Viscosity: 48.00 sec/qt

Cushion Volume:

bbbl

Water Loss: 12.79 in<sup>3</sup>

Gas Cushion Type:

Resistivity: 0.00 ohm.m

Gas Cushion Pressure:

psig

Salinity: 10000.00 ppm

Filter Cake: 0.20 inches

## Recovery Information

Recovery Table

Length ft	Description	Volume bbl
205.00	GCM 8%g 92%m	1.782

Total Length: 205.00 ft      Total Volume: 1.782 bbl

Num Fluid Samples: 0

Num Gas Bombs: 0

Serial #: none

Laboratory Name:

Laboratory Location:

Recovery Comments:



**TRILOBITE  
TESTING, INC.**

## DRILL STEM TEST REPORT

**GAS RATES**

Becker Oil Corp.

**30=32s-22w Clark Ks.**

P.O.Box 1150  
Ponca City, Ok.74602

**Mount Casino #1**

Job Ticket: 51782

**DST#: 2**

ATTN: Clyde M. Becker Jr.

Test Start: 2013.11.23 @ 16:44:23

### Gas Rates Information

Temperature: 59 (deg F)  
Relative Density: 0.65  
Z Factor: 0.8

Gas Rates Table

Flow Period	Elapsed Time	Choke (inches)	Pressure (psig)	Gas Rate (Mcf/d)
1	15	0.25	5.00	30.46
2	10	0.38	32.00	169.24
2	20	0.38	35.00	180.23
2	30	0.38	35.00	180.23
2	40	0.38	37.00	187.56
2	50	0.38	38.00	191.22
2	60	0.38	39.00	194.88

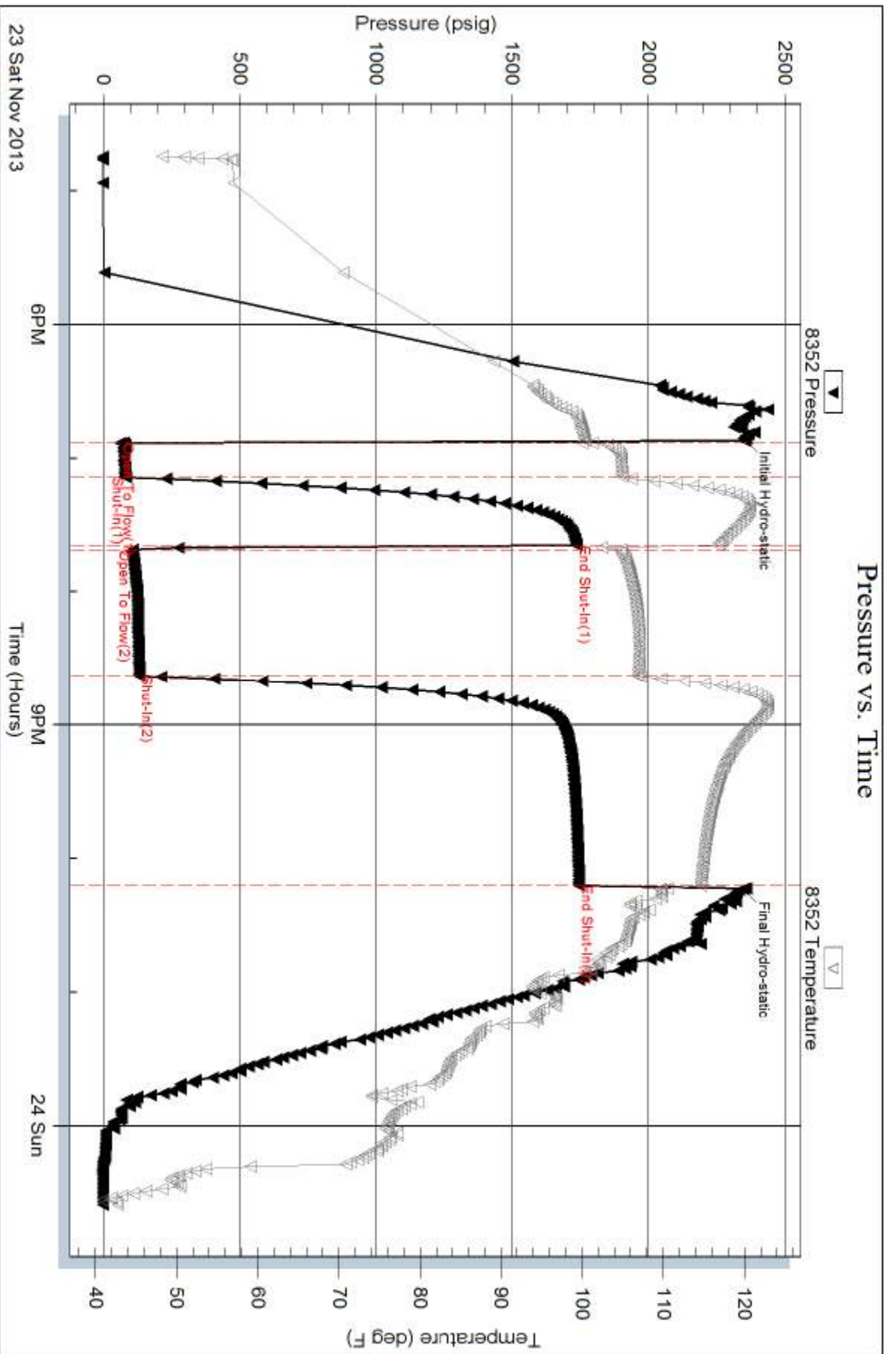
Serial #: 8352

Inside

Becker Oil Corp.

Mount Casino #1

DST Test Number: 2



Trilobite Testing, Inc

Ref. No: 51782

Printed: 2013.11.24 @ 06:41:49