



**TRILOBITE  
TESTING, INC**

# DRILL STEM TEST REPORT

Becker Oil Corp.

**30-32s-22w Clark Ks.**

P.O.Box 1150  
Ponca City, Ok.74602

**Mount Casino #1**

Job Ticket: 51783

**DST#: 3**

ATTN: Clyde M. Becker Jr.

Test Start: 2013.11.25 @ 02:02:21

## GENERAL INFORMATION:

Formation: **Pawnee**

Deviated: No Whipstock: ft (KB)

Time Tool Opened: 04:50:06

Time Test Ended: 10:55:36

Test Type: Conventional Bottom Hole (Reset)

Tester: Gary Pevoteaux

Unit No: 56

**Interval: 5072.00 ft (KB) To 5105.00 ft (KB) (TVD)**

Reference Elevations: 2083.00 ft (KB)

Total Depth: 5105.00 ft (KB) (TVD)

2073.00 ft (CF)

Hole Diameter: 7.88 inches Hole Condition: Poor

KB to GR/CF: 10.00 ft

**Serial #: 8352**

**Inside**

Press@RunDepth: 90.02 psig @ 5073.00 ft (KB)

Capacity: 8000.00 psig

Start Date: 2013.11.25 End Date: 2013.11.25

Last Calib.: 2013.11.25

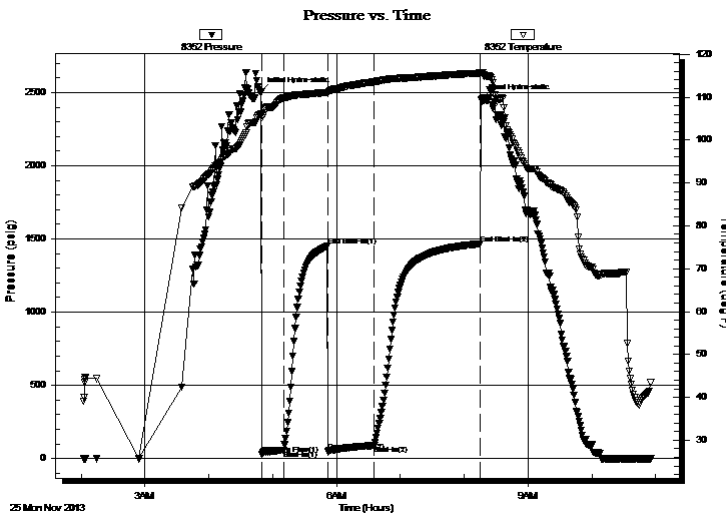
Start Time: 02:02:26 End Time: 10:55:36

Time On Btm: 2013.11.25 @ 04:49:06

Time Off Btm: 2013.11.25 @ 08:16:36

**TEST COMMENT:** IF:Strong blow . B.O.B. in 11 mins.  
IS:Weak blow . 1/4".  
FF:Strong blow . B.O.B. in 25 secs.  
FS:Weak blow . 1/4 - 1/2".

## PRESSURE SUMMARY



Time (Min.)	Pressure (psig)	Temp (deg F)	Annotation
0	2504.89	106.02	Initial Hydro-static
1	29.96	105.27	Open To Flow (1)
21	56.45	109.75	Shut-In(1)
63	1450.29	111.12	End Shut-In(1)
63	50.15	110.90	Open To Flow (2)
107	90.02	113.58	Shut-In(2)
207	1467.74	115.61	End Shut-In(2)
208	2458.29	115.77	Final Hydro-static

## Recovery

Length (ft)	Description	Volume (bbl)
120.00	GOCMW 34%g 21% 14%m 31%w	0.59
95.00	GOCWM 30%g 11%o 25%w 34%m	1.33
0.00	2650 ft.of GIP	0.00

## Gas Rates

	Choke (inches)	Pressure (psig)	Gas Rate (Mcf/d)

\* Recovery from multiple tests



**TRILOBITE  
TESTING, INC**

# DRILL STEM TEST REPORT

**FLUID SUMMARY**

Becker Oil Corp.

**30-32s-22w Clark Ks.**

P.O.Box 1150  
Ponca City , Ok.74602

**Mount Casino #1**

Job Ticket: 51783

**DST#: 3**

ATTN: Clyde M. Becker Jr.

Test Start: 2013.11.25 @ 02:02:21

## Mud and Cushion Information

Mud Type: Gel Chem

Cushion Type:

Oil API:

deg API

Mud Weight: 9.00 lb/gal

Cushion Length:

ft

Water Salinity:

70000 ppm

Viscosity: 48.00 sec/qt

Cushion Volume:

bbbl

Water Loss: 12.79 in<sup>3</sup>

Gas Cushion Type:

Resistivity: 0.00 ohm.m

Gas Cushion Pressure:

psig

Salinity: 10000.00 ppm

Filter Cake: 0.20 inches

## Recovery Information

Recovery Table

Length ft	Description	Volume bbl
120.00	GOCMW 34%g 21% 14%m 31%w	0.590
95.00	GOCWM 30%g 11%o 25%w 34%m	1.333
0.00	2650 ft.of GIP	0.000

Total Length: 215.00 ft

Total Volume: 1.923 bbl

Num Fluid Samples: 0

Num Gas Bombs: 0

Serial #: none

Laboratory Name:

Laboratory Location:

Recovery Comments:

Serial #: 8352

Inside

Becker Oil Corp.

Mount Casino #1

DST Test Number: 3

### Pressure vs. Time

