



**TRILOBITE
TESTING, INC**

DRILL STEM TEST REPORT

American Warrior

2-18s-34w Scott Co KS

3118 Cummings Rd.
P.O. Box 399
Garden City KS 67846
ATTN: Jeremy Schwartz

Palkowitsh 1 2

Job Ticket: 56747

DST#: 1

Test Start: 2014.02.19 @ 04:28:15

GENERAL INFORMATION:

Formation: **Marmaton-Pawnee**

Deviated: No Whipstock: ft (KB)

Time Tool Opened: 06:56:30

Time Test Ended: 12:42:45

Test Type: Conventional Bottom Hole (Initial)

Tester: Mike Roberts

Unit No: 65

Interval: 4460.00 ft (KB) To 4615.00 ft (KB) (TVD)

Reference Elevations: 3102.00 ft (KB)

Total Depth: 4615.00 ft (KB) (TVD)

3097.00 ft (CF)

Hole Diameter: 7.88 inches Hole Condition: Fair

KB to GR/CF: 5.00 ft

Serial #: 8846

Inside

Press@RunDepth: 201.10 psig @ 4466.00 ft (KB)

Capacity: 8000.00 psig

Start Date: 2014.02.19

End Date:

2014.02.19

Last Calib.:

2014.02.19

Start Time: 04:28:15

End Time:

12:42:45

Time On Btm:

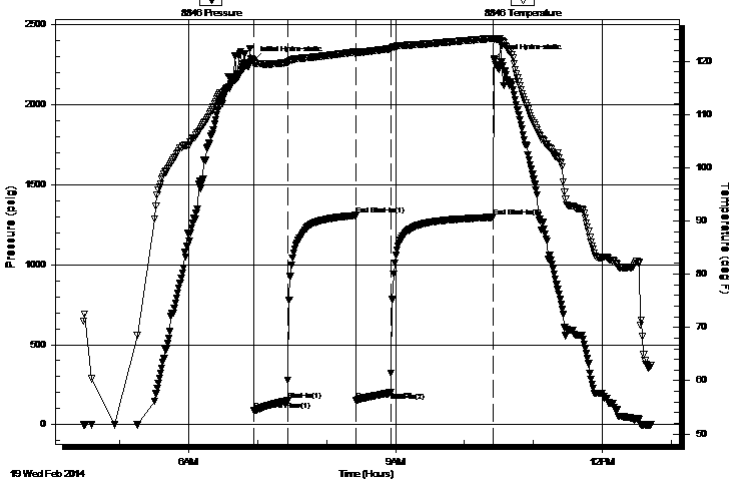
2014.02.19 @ 06:56:15

Time Off Btm:

2014.02.19 @ 10:26:00

TEST COMMENT: IF: Built to 1/2" blow
IS: No return blow
FF: Built to 1" blow
FS: No return blow

Pressure vs. Time



PRESSURE SUMMARY

Time (Min.)	Pressure (psig)	Temp (deg F)	Annotation
0	2274.11	120.02	Initial Hydro-static
1	88.34	119.45	Open To Flow (1)
30	150.04	119.76	Shut-In(1)
90	1308.88	121.73	End Shut-In(1)
90	153.31	121.24	Open To Flow (2)
120	201.10	122.34	Shut-In(2)
209	1297.70	124.28	End Shut-In(2)
210	2285.47	124.22	Final Hydro-static

Recovery

Length (ft)	Description	Volume (bbl)
62.00	ocm 30% m 70% o	0.87
124.00	ocm 20% o 80% m	1.74
62.00	w com 5% w 25% o 75% m	0.87

Gas Rates

	Choke (inches)	Pressure (psig)	Gas Rate (MMcf/d)



**TRILOBITE
TESTING, INC**

DRILL STEM TEST REPORT

FLUID SUMMARY

American Warrior

2-18s-34w Scott Co KS

3118 Cummings Rd.
P.O. Box 399
Garden City KS 67846
ATTN: Jeremy Schwartz

Palkowitsh 1 2

Job Ticket: 56747

DST#: 1

Test Start: 2014.02.19 @ 04:28:15

Mud and Cushion Information

Mud Type: Gel Chem

Mud Weight: 10.00 lb/gal

Viscosity: 65.00 sec/qt

Water Loss: 7.97 in³

Resistivity: 0.00 ohm.m

Salinity: 5000.00 ppm

Filter Cake: 1.00 inches

Cushion Type:

Cushion Length: ft

Cushion Volume: bbl

Gas Cushion Type:

Gas Cushion Pressure: psig

Oil API:

0 deg API

Water Salinity: 0 ppm

Recovery Information

Recovery Table

Length ft	Description	Volume bbl
62.00	ocm 30% m 70% o	0.870
124.00	ocm 20% o 80% m	1.739
62.00	w com 5% w 25% o 75% m	0.870

Total Length: 248.00 ft Total Volume: 3.479 bbl

Num Fluid Samples: 0

Num Gas Bombs: 0

Serial #:

Laboratory Name:

Laboratory Location:

Recovery Comments:

