



DRILL STEM TEST REPORT

Prepared For: **Hawkins Oil L.L.C**

427 s Boston Ave Ste 915 Tulsa OK 74103 +
4114

ATTN: Bill Stout

J W Smith #1-B

20-28S-24E Butler

Start Date: 2013.11.01 @ 01:11:00

End Date: 2013.11.01 @ 09:54:00

Job Ticket #: 18452 DST #: 1

Superior Testers Enterprises LLC
PO Box 138 Great Bend KS 67530
1-800-792-6902

Printed: 2013.11.01 @ 10:11:42



DRILL STEM TEST REPORT

Hawkins Oil L.L.C

20-28S-24E Butler

427 s Boston Ave Ste 915 Tulsa OK 74103 + 4114

J W Smith #1-B

Job Ticket: 18452

DST#: 1

ATTN: Bill Stout

Test Start: 2013.11.01 @ 01:11:00

GENERAL INFORMATION:

Formation: **Arbuckle**

Deviated: No Whipstock: ft (KB)

Time Tool Opened: 02:53:30

Time Test Ended: 09:54:00

Test Type: Conventional Bottom Hole (Initial)

Tester: Jared Scheck

Unit No: 3320- Great Bend-

Interval: 2460.00 ft (KB) To 2498.00 ft (KB) (TVD)

Reference Elevations: 1268.00 ft (KB)

Total Depth: 2498.00 ft (KB) (TVD)

1260.00 ft (CF)

Hole Diameter: 7.88 inches Hole Condition: Fair

KB to GR/CF: 8.00 ft

Serial #: 6731

Press@RunDepth: 674.52 psia @ ft (KB)

Capacity: 5000.00 psia

Start Date: 2013.11.01

End Date: 2013.11.01

Last Calib.: 2013.11.01

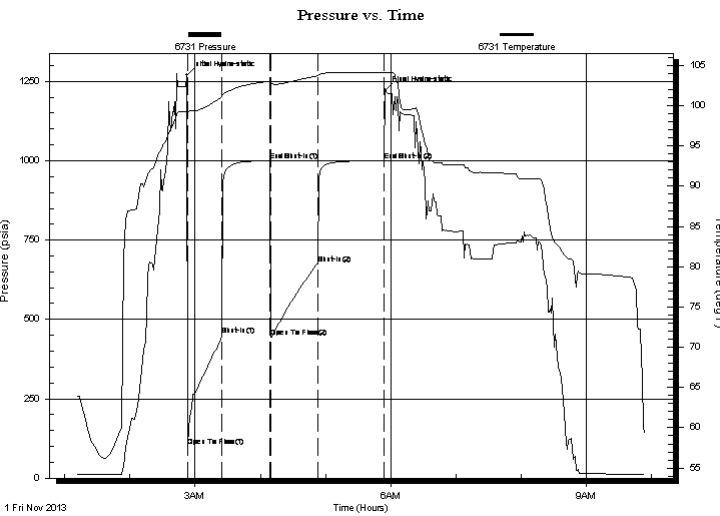
Start Time: 01:11:00

End Time: 09:54:00

Time On Btm: 2013.11.01 @ 02:52:30

Time Off Btm: 2013.11.01 @ 05:55:00

TEST COMMENT: 1st Opening 30 Minutes-Strong blow built bottom of bucket in 2 minutes
 1st Shut-in 45 Minutes-No blow back
 2nd Opening 45 Minutes-Strong blow built bottom of bucket in 3 minutes
 2nd Shut-in 60 Minutes-No blow back



PRESSURE SUMMARY

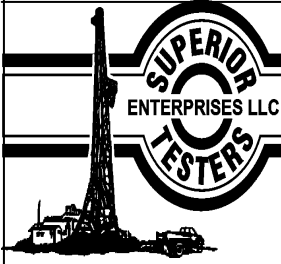
Time (Min.)	Pressure (psia)	Temp (deg F)	Annotation
0	1269.46	99.25	Initial Hydro-static
1	101.64	99.25	Open To Flow (1)
32	451.54	101.10	Shut-In(1)
77	999.29	103.01	End Shut-In(1)
78	444.11	102.79	Open To Flow (2)
120	674.52	103.69	Shut-In(2)
181	999.55	104.07	End Shut-In(2)
183	1221.36	104.12	Final Hydro-static

Recovery

Length (ft)	Description	Volume (bbl)
1390.00	Clean oil reversed	16.77
180.00	oil cut mud 10%oil 90%mud	2.52
0.00	Gravity oil 44	0.00

Gas Rates

Choke (inches)	Pressure (psia)	Gas Rate (Mcf/d)



DRILL STEM TEST REPORT

Hawkins Oil L.L.C

20-28S-24E Butler

427 s Boston Ave Ste 915 Tulsa OK 74103 + 4114

J W Smith #1-B

Job Ticket: 18452

DST#: 1

ATTN: Bill Stout

Test Start: 2013.11.01 @ 01:11:00

GENERAL INFORMATION:

Formation: **Arbuckle**

Deviated: No Whipstock: ft (KB)

Time Tool Opened: 02:53:30

Time Test Ended: 09:54:00

Test Type: Conventional Bottom Hole (Initial)

Tester: Jared Scheck

Unit No: 3320- Great Bend-

Interval: 2460.00 ft (KB) To 2498.00 ft (KB) (TVD)

Reference Elevations: 1268.00 ft (KB)

Total Depth: 2498.00 ft (KB) (TVD)

1260.00 ft (CF)

Hole Diameter: 7.88 inches Hole Condition: Fair

KB to GR/CF: 8.00 ft

Serial #: 8159

Press@RunDepth: 1000.71 psia @ ft (KB)

Capacity: 5000.00 psia

Start Date: 2013.11.01

End Date:

2013.11.01

Last Calib.:

2013.11.01

Start Time: 01:11:00

End Time:

09:54:30

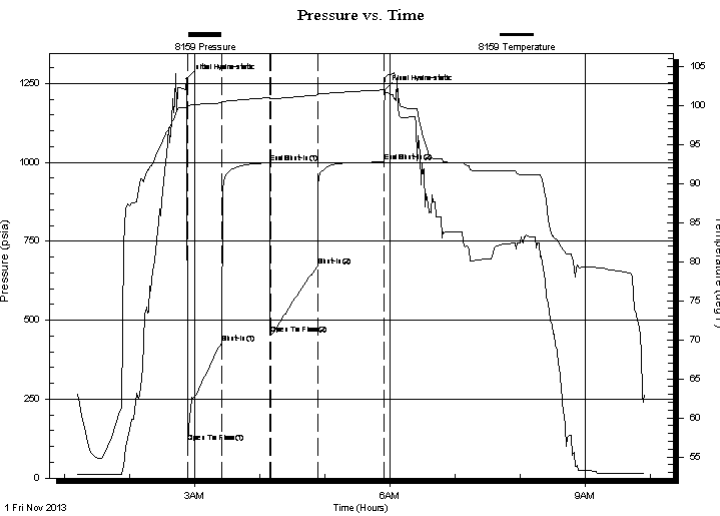
Time On Btm:

2013.11.01 @ 02:52:30

Time Off Btm:

2013.11.01 @ 05:55:00

TEST COMMENT: 1st Opening 30 Minutes-Strong blow built bottom of bucket in 2 minutes
 1st Shut-in 45 Minutes-No blow back
 2nd Opening 45 Minutes-Strong blow built bottom of bucket in 3 minutes
 2nd Shut-in 60 Minutes-No blow back



PRESSURE SUMMARY

Time (Min.)	Pressure (psia)	Temp (deg F)	Annotation
0	1265.02	99.75	Initial Hydro-static
1	114.51	99.91	Open To Flow (1)
32	428.69	100.34	Shut-In(1)
77	998.33	101.02	End Shut-In(1)
78	455.96	100.87	Open To Flow (2)
121	672.61	101.36	Shut-In(2)
182	1000.71	102.01	End Shut-In(2)
183	1229.01	103.35	Final Hydro-static

Recovery

Length (ft)	Description	Volume (bbl)
1390.00	Clean oil reversed	16.77
180.00	oil cut mud 10%oil 90%mud	2.52
0.00	Gravity oil 44	0.00

Gas Rates

	Choke (inches)	Pressure (psia)	Gas Rate (Mcf/d)



DRILL STEM TEST REPORT

TOOL DIAGRAM

Hawkins Oil L.L.C

20-28S-24E Butler

427 s Boston Ave Ste 915 Tulsa OK 74103 +
4114

J W Smith #1-B

Job Ticket: 18452

DST#: 1

ATTN: Bill Stout

Test Start: 2013.11.01 @ 01:11:00

Tool Information

Drill Pipe:	Length: 2160.00 ft	Diameter: 3.80 inches	Volume: 30.30 bbl	Tool Weight: 1000.00 lb
Heavy Wt. Pipe:	Length: 0.00 ft	Diameter: 0.00 inches	Volume: 0.00 bbl	Weight set on Packer: 20000.00 lb
Drill Collar:	Length: 300.00 ft	Diameter: 2.25 inches	Volume: 1.48 bbl	Weight to Pull Loose: 62000.00 lb
			<u>Total Volume: 31.78 bbl</u>	Tool Chased 0.00 ft
Drill Pipe Above KB:	28.00 ft			String Weight: Initial 50000.00 lb
Depth to Top Packer:	2460.00 ft			Final 58000.00 lb
Depth to Bottom Packer:	ft			
Interval between Packers:	38.00 ft			
Tool Length:	66.00 ft			
Number of Packers:	2	Diameter: 6.75 inches		

Tool Comments: dropped bar used circulating sub

Tool Description	Length (ft)	Serial No.	Position	Depth (ft)	Accum. Lengths
Shut-In Tool	5.00			2437.00	
Hydraulic Tool	5.00			2442.00	
Jars	6.00			2448.00	
Safety Joint	2.00			2450.00	
Packer	5.00			2455.00	28.00 Bottom Of Top Packer
Packer	5.00			2460.00	
Anchor	33.00			2493.00	
Recorder	1.00	6731	Inside	2494.00	
Recorder	1.00	8159	Outside	2495.00	
Bullnose	3.00			2498.00	38.00 Bottom Packers & Anchor
Total Tool Length:	66.00				



DRILL STEM TEST REPORT

FLUID SUMMARY

Hawkins Oil L.L.C

20-28S-24E Butler

427 s Boston Ave Ste 915 Tulsa OK 74103 +
4114

J W Smith #1-B

Job Ticket: 18452

DST#: 1

ATTN: Bill Stout

Test Start: 2013.11.01 @ 01:11:00

Mud and Cushion Information

Mud Type: Gel Chem

Mud Weight: 9.00 lb/gal

Viscosity: 40.00 sec/qt

Water Loss: 8.79 in³

Resistivity: ohm.m

Salinity: 1000.00 ppm

Filter Cake: 1.00 inches

Cushion Type:

Cushion Length: ft

Cushion Volume: bbl

Gas Cushion Type:

Gas Cushion Pressure: psia

Oil API:

Water Salinity: deg API

ppm

Recovery Information

Recovery Table

Length ft	Description	Volume bbl
1390.00	Clean oil reversed	16.765
180.00	oil cut mud 10%oil 90%mud	2.525
0.00	Gravity oil 44	0.000

Total Length: 1570.00 ft Total Volume: 19.290 bbl

Num Fluid Samples: 0

Num Gas Bombs: 0

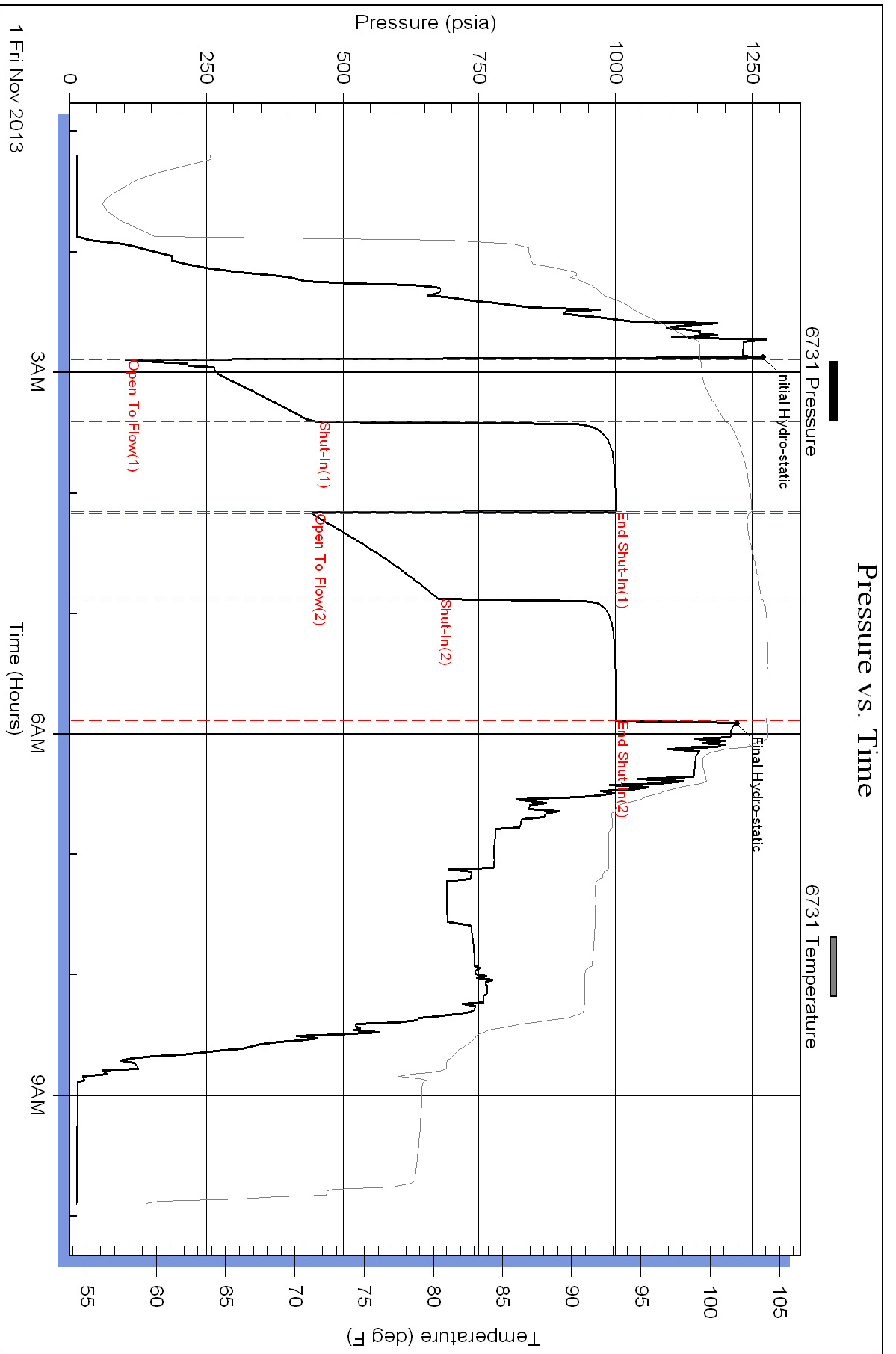
Serial #:

Laboratory Name:

Laboratory Location:

Recovery Comments:

Pressure vs. Time



Pressure vs. Time

