



DRILL STEM TEST REPORT

Prepared For: **American Warrior Inc.**

PO Box 399
GardenCity KS 67846

ATTN: Jason Alm

Riedel C #1-31

31-13s-19w Ellis,KS

Start Date: 2014.02.16 @ 11:05:00

End Date: 2014.02.16 @ 18:06:15

Job Ticket #: 56212 DST #: 1

Trilobite Testing, Inc
PO Box 362 Hays, KS 67601
ph: 785-625-4778 fax: 785-625-5620

Printed: 2014.02.18 @ 13:40:57



TRILOBITE TESTING, INC

DRILL STEM TEST REPORT

American Warrior Inc.
 PO Box 399
 GardenCity KS 67846
 ATTN: Jason Alm

31-13s-19w Ellis,KS
Riedel C #1-31
 Job Ticket: 56212 **DST#: 1**
 Test Start: 2014.02.16 @ 11:05:00

GENERAL INFORMATION:

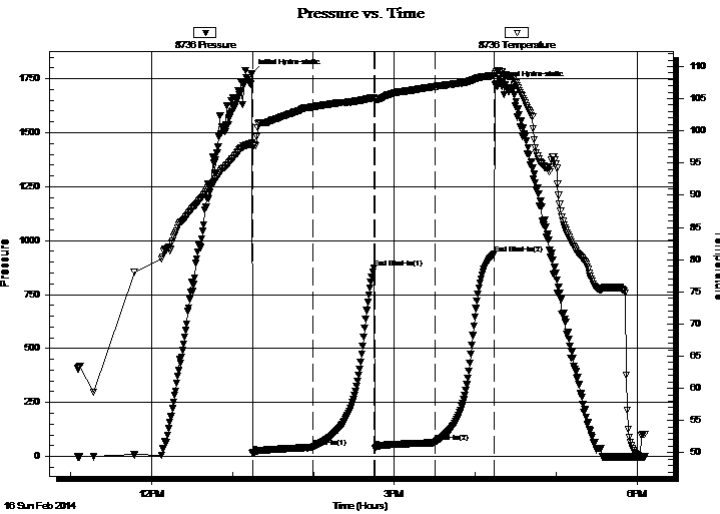
Formation: **KC "H-J"**
 Deviated: No Whipstock: ft (KB)
 Test Type: Conventional Bottom Hole (Initial)
 Time Tool Opened: 13:14:45
 Tester: Brett Dickinson
 Time Test Ended: 18:06:15
 Unit No: 59
 Interval: **3673.00 ft (KB) To 3755.00 ft (KB) (TVD)**
 Reference Elevations: 2278.00 ft (KB)
 Total Depth: 3755.00 ft (KB) (TVD)
 2271.00 ft (CF)
 Hole Diameter: 7.88 inches Hole Condition: Fair
 KB to GR/CF: 7.00 ft

Serial #: 8736

Outside

Press@RunDepth: 64.35 psig @ 3677.00 ft (KB) Capacity: 8000.00 psig
 Start Date: 2014.02.16 End Date: 2014.02.16 Last Calib.: 2014.02.16
 Start Time: 11:05:05 End Time: 18:06:14 Time On Btm: 2014.02.16 @ 13:14:15
 Time Off Btm: 2014.02.16 @ 16:15:45

TEST COMMENT: IF-BOB in 29 min
 IS-Very weak surface blow
 FF-BOB Immediately
 FS-Very weak surface blow



PRESSURE SUMMARY

Time (Min.)	Pressure (psig)	Temp (deg F)	Annotation
0	1773.87	98.07	Initial Hydro-static
1	15.50	97.38	Open To Flow (1)
45	42.35	103.71	Shut-In(1)
91	871.74	105.15	End Shut-In(1)
92	36.21	104.91	Open To Flow (2)
136	64.35	106.88	Shut-In(2)
180	939.66	108.58	End Shut-In(2)
182	1717.65	109.20	Final Hydro-static

Recovery

Length (ft)	Description	Volume (bbl)
115.00	GOCM 20%G 30%O 50%M	1.34
0.00	385ft GIP	0.00

Gas Rates

Choke (inches)	Pressure (psig)	Gas Rate (Mcf/d)



**TRILOBITE
TESTING, INC**

DRILL STEM TEST REPORT

American Warrior Inc.

31-13s-19w Ellis,KS

PO Box 399
GardenCity KS 67846

Riedel C #1-31

Job Ticket: 56212

DST#: 1

ATTN: Jason Alm

Test Start: 2014.02.16 @ 11:05:00

GENERAL INFORMATION:

Formation: **KC "H-J"**

Deviated: No Whipstock: ft (KB)

Time Tool Opened: 13:14:45

Time Test Ended: 18:06:15

Test Type: Conventional Bottom Hole (Initial)

Tester: Brett Dickinson

Unit No: 59

Interval: 3673.00 ft (KB) To 3755.00 ft (KB) (TVD)

Total Depth: 3755.00 ft (KB) (TVD)

Hole Diameter: 7.88 inches Hole Condition: Fair

Reference Elevations: 2278.00 ft (KB)

2271.00 ft (CF)

KB to GR/CF: 7.00 ft

Serial #: 8018 Inside

Press@RunDepth: psig @ 3677.00 ft (KB)

Start Date: 2014.02.16

End Date: 2014.02.16

Capacity: 8000.00 psig

Last Calib.: 2014.02.16

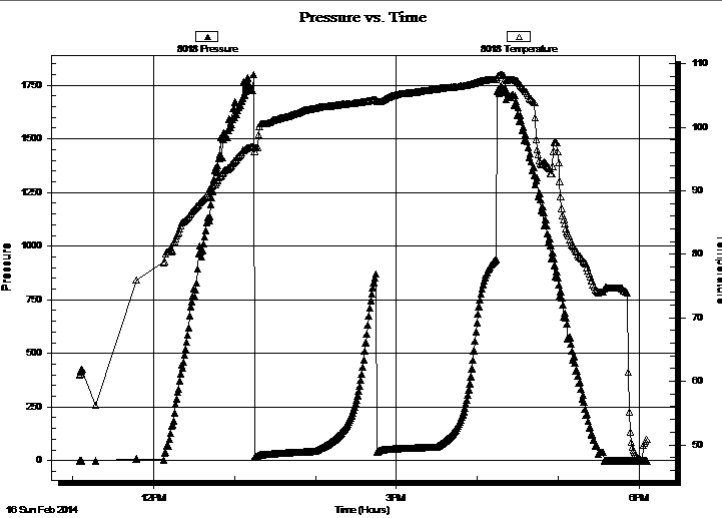
Start Time: 11:05:05

End Time: 18:06:14

Time On Btm:

Time Off Btm:

TEST COMMENT: IF-BOB in 29 min
IS-Very weak surface blow
FF-BOB Immediately
FS-Very weak surface blow



PRESSURE SUMMARY

Time (Min.)	Pressure (psig)	Temp (deg F)	Annotation

Recovery

Length (ft)	Description	Volume (bbl)
115.00	GOCM 20%G 30%O 50%M	1.34
0.00	385ft GIP	0.00

Gas Rates

Choke (inches)	Pressure (psig)	Gas Rate (Mcf/d)



**TRILOBITE
TESTING, INC**

DRILL STEM TEST REPORT

TOOL DIAGRAM

American Warrior Inc.

31-13s-19w Ellis,KS

PO Box 399
GardenCity KS 67846

Riedel C #1-31

Job Ticket: 56212

DST#: 1

ATTN: Jason Alm

Test Start: 2014.02.16 @ 11:05:00

Tool Information

Drill Pipe:	Length: 3640.00 ft	Diameter: 3.80 inches	Volume: 51.06 bbl	Tool Weight: 2000.00 lb
Heavy Wt. Pipe:	Length: ft	Diameter: 2.70 inches	Volume: - bbl	Weight set on Packer: 25000.00 lb
Drill Collar:	Length: 30.00 ft	Diameter: 2.25 inches	Volume: 0.15 bbl	Weight to Pull Loose: 75000.00 lb
			<u>Total Volume: - bbl</u>	Tool Chased 0.00 ft
Drill Pipe Above KB:	25.00 ft			String Weight: Initial 54000.00 lb
Depth to Top Packer:	3673.00 ft			Final 55000.00 lb
Depth to Bottom Packer:	ft			
Interval between Packers:	82.00 ft			
Tool Length:	110.00 ft			
Number of Packers:	2	Diameter: 6.75 inches		

Tool Comments:

Tool Description

Length (ft) Serial No. Position Depth (ft) Accum. Lengths

Tool Description	Length (ft)	Serial No.	Position	Depth (ft)	Accum. Lengths
Shut In Tool	5.00			3650.00	
Hydraulic tool	5.00			3655.00	
Jars	5.00			3660.00	
Safety Joint	3.00			3663.00	
Packer	5.00			3668.00	28.00 Bottom Of Top Packer
Packer	5.00			3673.00	
Stubb	1.00			3674.00	
Perforations	3.00			3677.00	
Recorder	0.00	8018	Inside	3677.00	
Recorder	0.00	8736	Outside	3677.00	
Change Over Sub	1.00			3678.00	
Drill Pipe	63.00			3741.00	
Change Over Sub	1.00			3742.00	
Perforations	10.00			3752.00	
Bullnose	3.00			3755.00	82.00 Bottom Packers & Anchor

Total Tool Length: 110.00



**TRILOBITE
TESTING, INC**

DRILL STEM TEST REPORT

FLUID SUMMARY

American Warrior Inc.

31-13s-19w Ellis,KS

PO Box 399
GardenCity KS 67846

Riedel C #1-31

Job Ticket: 56212

DST#: 1

ATTN: Jason Alm

Test Start: 2014.02.16 @ 11:05:00

Mud and Cushion Information

Mud Type: Gel Chem

Cushion Type:

Oil API:

deg API

Mud Weight: 9.00 lb/gal

Cushion Length: ft

Water Salinity: ppm

Viscosity: 54.00 sec/qt

Cushion Volume: bbl

Water Loss: 8.37 in³

Gas Cushion Type:

Resistivity: ohm.m

Gas Cushion Pressure: psig

Salinity: 3250.00 ppm

Filter Cake: inches

Recovery Information

Recovery Table

Length ft	Description	Volume bbl
115.00	GOCM 20%G 30%O 50%M	1.340
0.00	385ft GIP	0.000

Total Length: 115.00 ft Total Volume: 1.340 bbl

Num Fluid Samples: 0

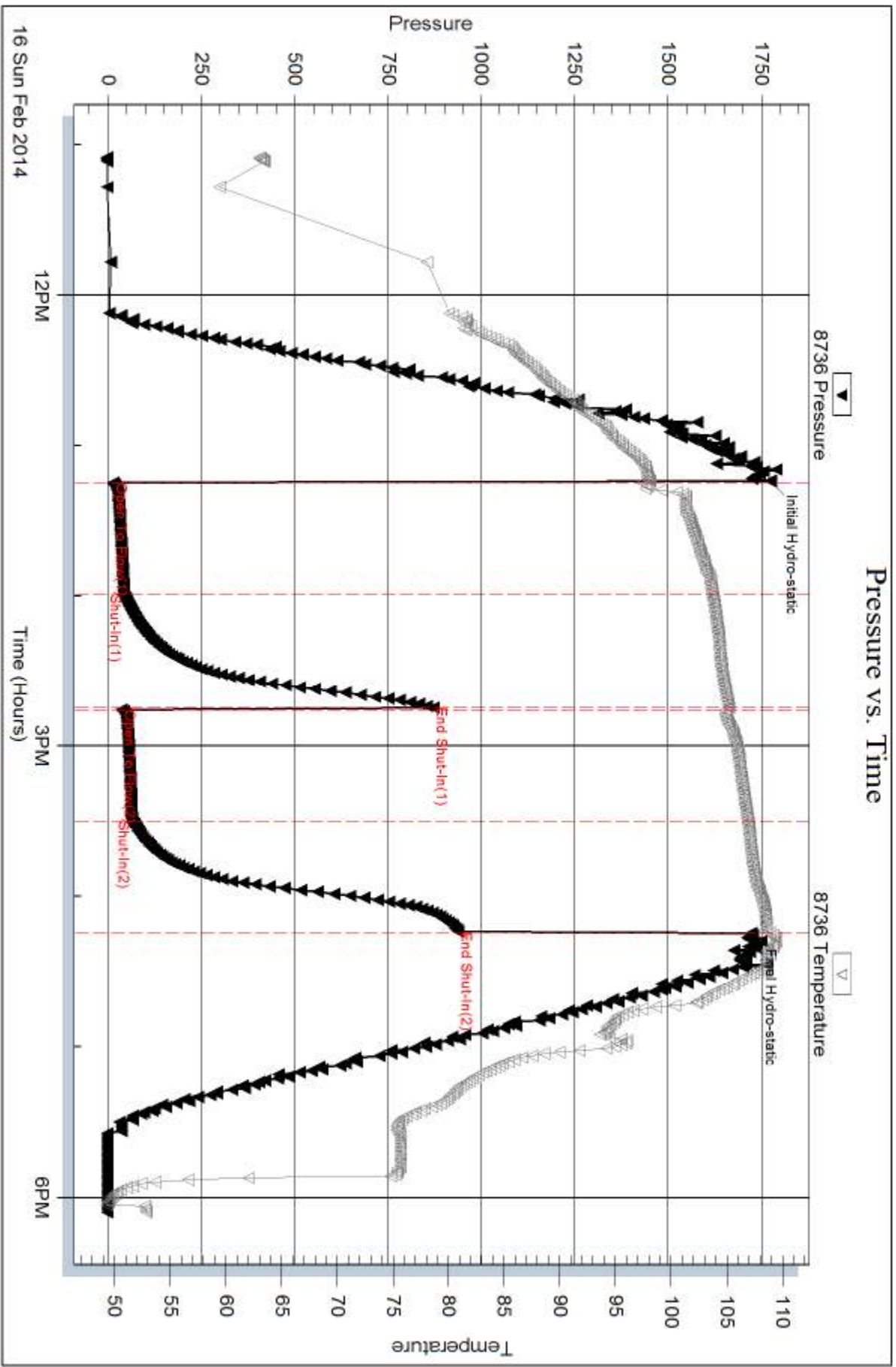
Num Gas Bombs: 0

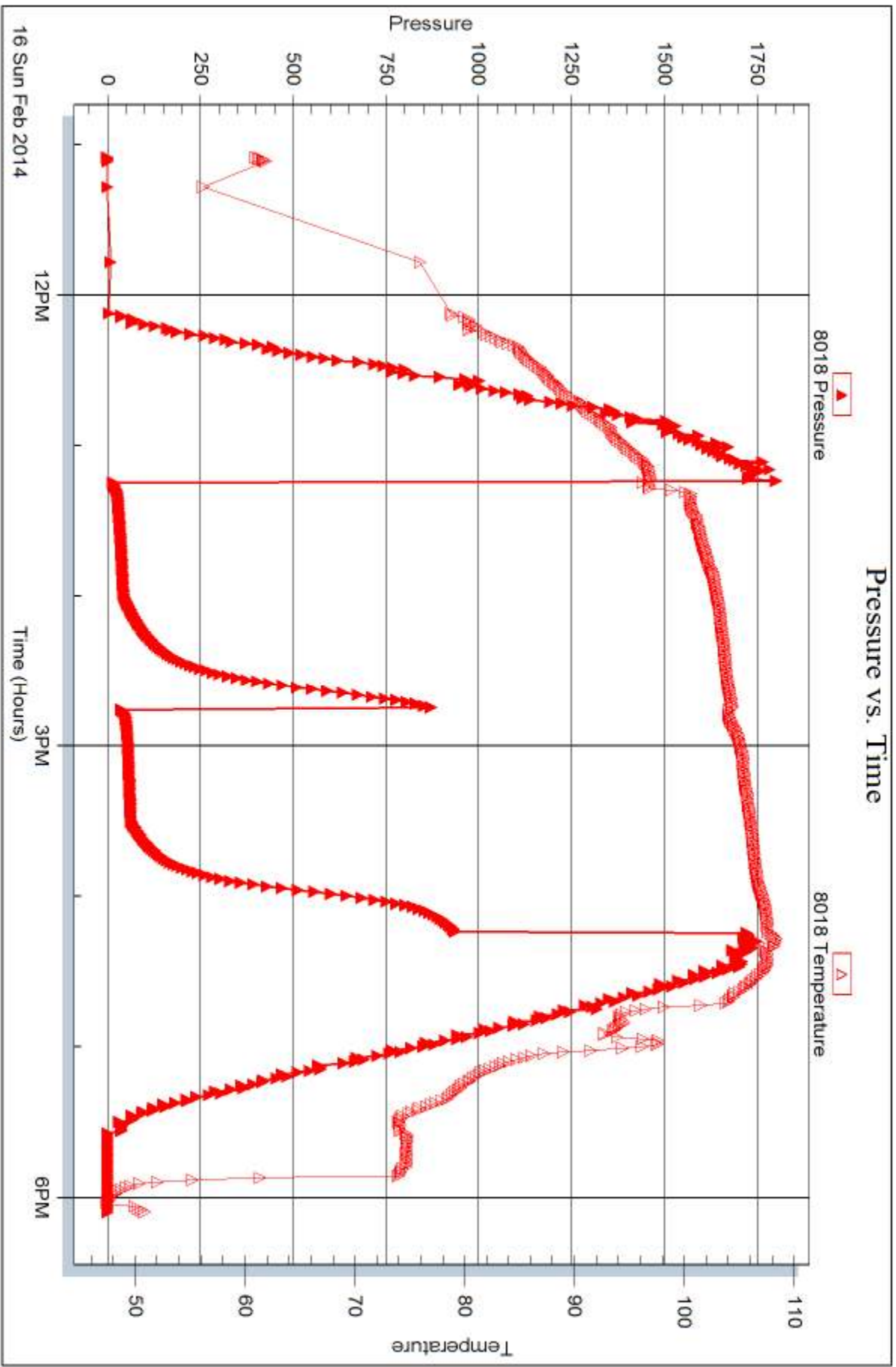
Serial #:

Laboratory Name:

Laboratory Location:

Recovery Comments:







DRILL STEM TEST REPORT

Prepared For: **American Warrior Inc.**

PO Box 399
GardenCity KS 67846

ATTN: Jason Alm

Riedel C #1-31

31-13s-19w Ellis,KS

Start Date: 2014.02.17 @ 06:25:00

End Date: 2014.02.17 @ 12:26:45

Job Ticket #: 56213 DST #: 2

Trilobite Testing, Inc
PO Box 362 Hays, KS 67601
ph: 785-625-4778 fax: 785-625-5620

Printed: 2014.02.18 @ 13:40:15



TRILOBITE TESTING, INC

DRILL STEM TEST REPORT

American Warrior Inc.
 PO Box 399
 GardenCity KS 67846
 ATTN: Jason Alm

31-13s-19w Ellis,KS
Riedel C #1-31
 Job Ticket: 56213 **DST#: 2**
 Test Start: 2014.02.17 @ 06:25:00

GENERAL INFORMATION:

Formation: **Arbuckle**
 Deviated: No Whipstock: ft (KB)
 Time Tool Opened: 08:13:45
 Time Test Ended: 12:26:45
 Interval: **3851.00 ft (KB) To 3909.00 ft (KB) (TVD)**
 Total Depth: 3909.00 ft (KB) (TVD)
 Hole Diameter: 7.88 inches Hole Condition: Fair
 Test Type: Conventional Bottom Hole (Reset)
 Tester: Brett Dickinson
 Unit No: 59
 Reference Elevations: 2278.00 ft (KB)
 2271.00 ft (CF)
 KB to GR/CF: 7.00 ft

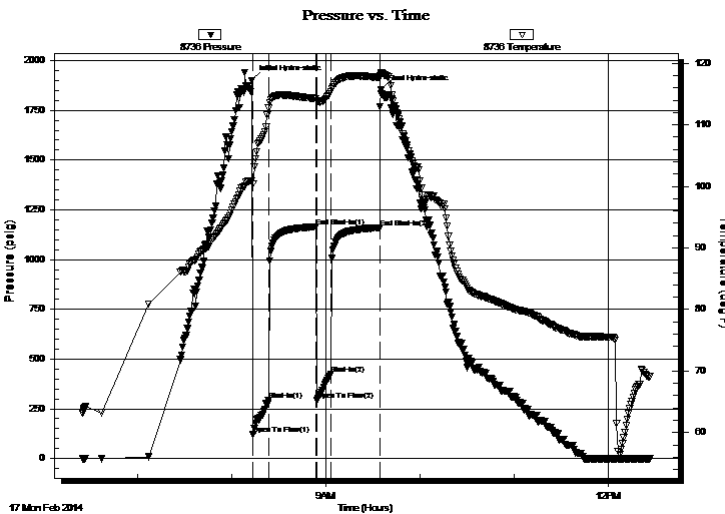
Serial #: 8736

Outside

Press@RunDepth: 423.05 psig @ 3855.00 ft (KB) Capacity: 8000.00 psig
 Start Date: 2014.02.17 End Date: 2014.02.17 Last Calib.: 2014.02.17
 Start Time: 06:25:05 End Time: 12:26:44 Time On Btm: 2014.02.17 @ 08:13:15
 Time Off Btm: 2014.02.17 @ 09:35:15

TEST COMMENT: IF-BOB in 1 1/2 min
 IS-4" blow
 FF-BOB in 1 min
 FS-1" blow

PRESSURE SUMMARY



Time (Min.)	Pressure (psig)	Temp (deg F)	Annotation
0	1901.83	100.92	Initial Hydro-static
1	120.65	100.42	Open To Flow (1)
11	294.49	112.72	Shut-In(1)
41	1164.39	114.26	End Shut-In(1)
41	292.41	113.93	Open To Flow (2)
50	423.05	115.36	Shut-In(2)
82	1160.30	117.65	End Shut-In(2)
82	1851.42	118.15	Final Hydro-static

Recovery

Length (ft)	Description	Volume (bbl)
515.00	GO 20%G 80%O	6.95
370.00	GMCO 20%G 60%O 20%M	5.19
120.00	GVSWOCM 10%G 20%O 5%W 65%M	1.68
0.00	180ft GIP	0.00

* Recovery from multiple tests

Gas Rates

	Choke (inches)	Pressure (psig)	Gas Rate (Mcf/d)



**TRILOBITE
TESTING, INC**

DRILL STEM TEST REPORT

American Warrior Inc.
PO Box 399
GardenCity KS 67846
ATTN: Jason Alm

31-13s-19w Ellis,KS
Riedel C #1-31
Job Ticket: 56213 **DST#: 2**
Test Start: 2014.02.17 @ 06:25:00

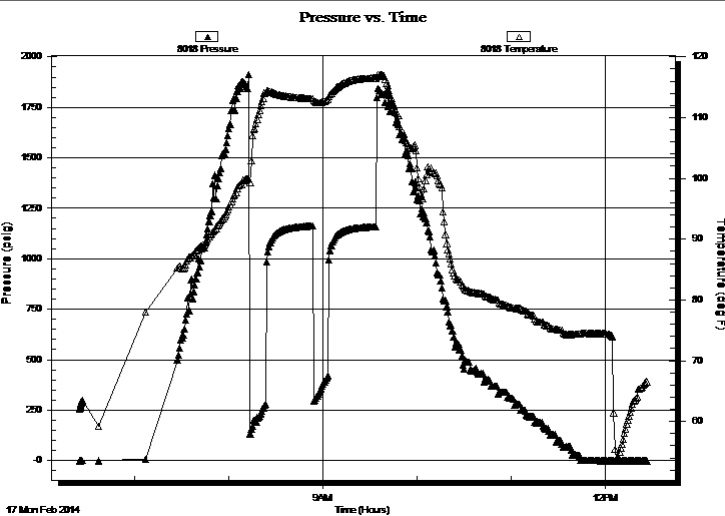
GENERAL INFORMATION:

Formation: Arbuckle			
Deviated: No Whipstock:	ft (KB)	Test Type: Conventional Bottom Hole (Reset)	
Time Tool Opened: 08:13:45		Tester: Brett Dickinson	
Time Test Ended: 12:26:45		Unit No: 59	
Interval: 3851.00 ft (KB) To 3909.00 ft (KB) (TVD)		Reference Elevations: 2278.00 ft (KB)	
Total Depth: 3909.00 ft (KB) (TVD)		2271.00 ft (CF)	
Hole Diameter: 7.88 inches	Hole Condition: Fair	KB to GR/CF: 7.00 ft	

Serial #: 8018 Inside

Press@RunDepth: psig @ 3855.00 ft (KB)	Capacity: 8000.00 psig
Start Date: 2014.02.17	End Date: 2014.02.17
Start Time: 06:25:05	End Time: 12:26:59
	Last Calib.: 2014.02.17
	Time On Btm:
	Time Off Btm:

TEST COMMENT: IF-BOB in 1 1/2 min
IS-4" blow
FF-BOB in 1 min
FS-1" blow



PRESSURE SUMMARY

Time (Min.)	Pressure (psig)	Temp (deg F)	Annotation

Recovery

Length (ft)	Description	Volume (bbl)
515.00	GO 20%G 80%O	6.95
370.00	GMCO 20%G 60%O 20%M	5.19
120.00	GVSWOCM 10%G 20%O 5%W 65%M	1.68
0.00	180ft GIP	0.00

Gas Rates

	Choke (inches)	Pressure (psig)	Gas Rate (Mcf/d)

* Recovery from multiple tests



**TRILOBITE
TESTING, INC**

DRILL STEM TEST REPORT

TOOL DIAGRAM

American Warrior Inc.

31-13s-19w Ellis,KS

PO Box 399
GardenCity KS 67846

Riedel C #1-31

Job Ticket: 56213

DST#: 2

ATTN: Jason Alm

Test Start: 2014.02.17 @ 06:25:00

Tool Information

Drill Pipe:	Length: 3804.00 ft	Diameter: 3.80 inches	Volume: 53.36 bbl	Tool Weight: 2000.00 lb
Heavy Wt. Pipe:	Length: ft	Diameter: 2.70 inches	Volume: - bbl	Weight set on Packer: 25000.00 lb
Drill Collar:	Length: 30.00 ft	Diameter: 2.25 inches	Volume: 0.15 bbl	Weight to Pull Loose: 60000.00 lb
			<u>Total Volume: - bbl</u>	Tool Chased 0.00 ft
Drill Pipe Above KB:	3.00 ft			String Weight: Initial 56000.00 lb
Depth to Top Packer:	3851.00 ft			Final 60000.00 lb
Depth to Bottom Packer:	ft			
Interval between Packers:	58.00 ft			
Tool Length:	78.00 ft			
Number of Packers:	2	Diameter: 6.75 inches		

Tool Comments:

Tool Description	Length (ft)	Serial No.	Position	Depth (ft)	Accum. Lengths
------------------	-------------	------------	----------	------------	----------------

Shut In Tool	5.00			3836.00	
Hydraulic tool	5.00			3841.00	
Packer	5.00			3846.00	20.00 Bottom Of Top Packer
Packer	5.00			3851.00	
Stubb	1.00			3852.00	
Perforations	3.00			3855.00	
Recorder	0.00	8018	Inside	3855.00	
Recorder	0.00	8736	Outside	3855.00	
Change Over Sub	1.00			3856.00	
Drill Pipe	32.00			3888.00	
Change Over Sub	1.00			3889.00	
Perforations	17.00			3906.00	
Bullnose	3.00			3909.00	58.00 Bottom Packers & Anchor

Total Tool Length: 78.00



**TRILOBITE
TESTING, INC**

DRILL STEM TEST REPORT

FLUID SUMMARY

American Warrior Inc.

31-13s-19w Ellis,KS

PO Box 399
GardenCity KS 67846

Riedel C #1-31

Job Ticket: 56213

DST#: 2

ATTN: Jason Alm

Test Start: 2014.02.17 @ 06:25:00

Mud and Cushion Information

Mud Type: Gel Chem

Cushion Type:

Oil API:

35 deg API

Mud Weight: 9.00 lb/gal

Cushion Length:

ft

Water Salinity:

ppm

Viscosity: 54.00 sec/qt

Cushion Volume:

bbbl

Water Loss: 8.37 in³

Gas Cushion Type:

Resistivity: ohm.m

Gas Cushion Pressure:

psig

Salinity: 3250.00 ppm

Filter Cake: inches

Recovery Information

Recovery Table

Length ft	Description	Volume bbbl
515.00	GO 20%G 80%O	6.951
370.00	GMCO 20%G 60%O 20%M	5.190
120.00	GVSWOCM 10%G 20%O 5%W 65%M	1.683
0.00	180ft GIP	0.000

Total Length: 1005.00 ft

Total Volume: 13.824 bbl

Num Fluid Samples: 0

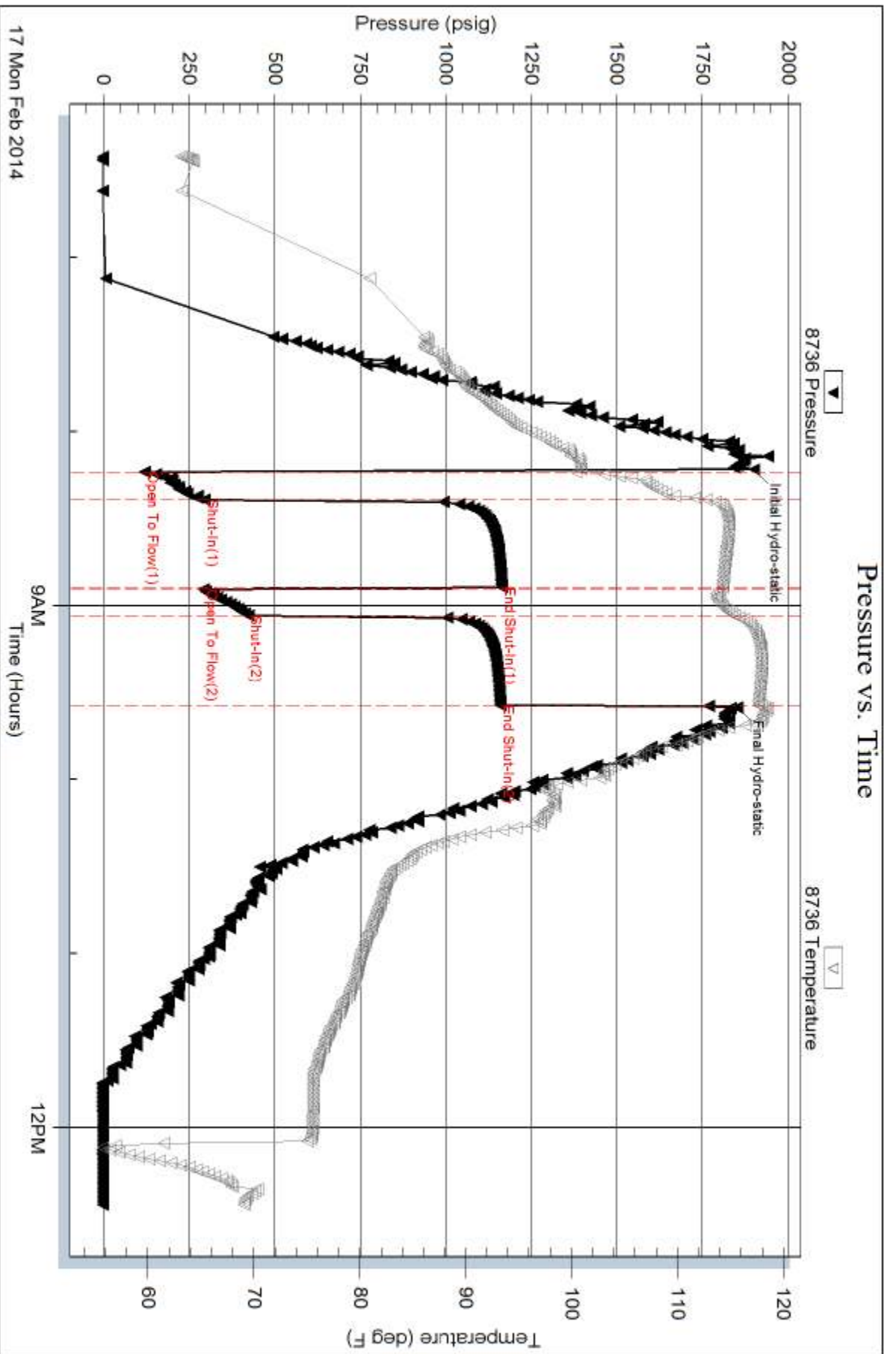
Num Gas Bombs: 0

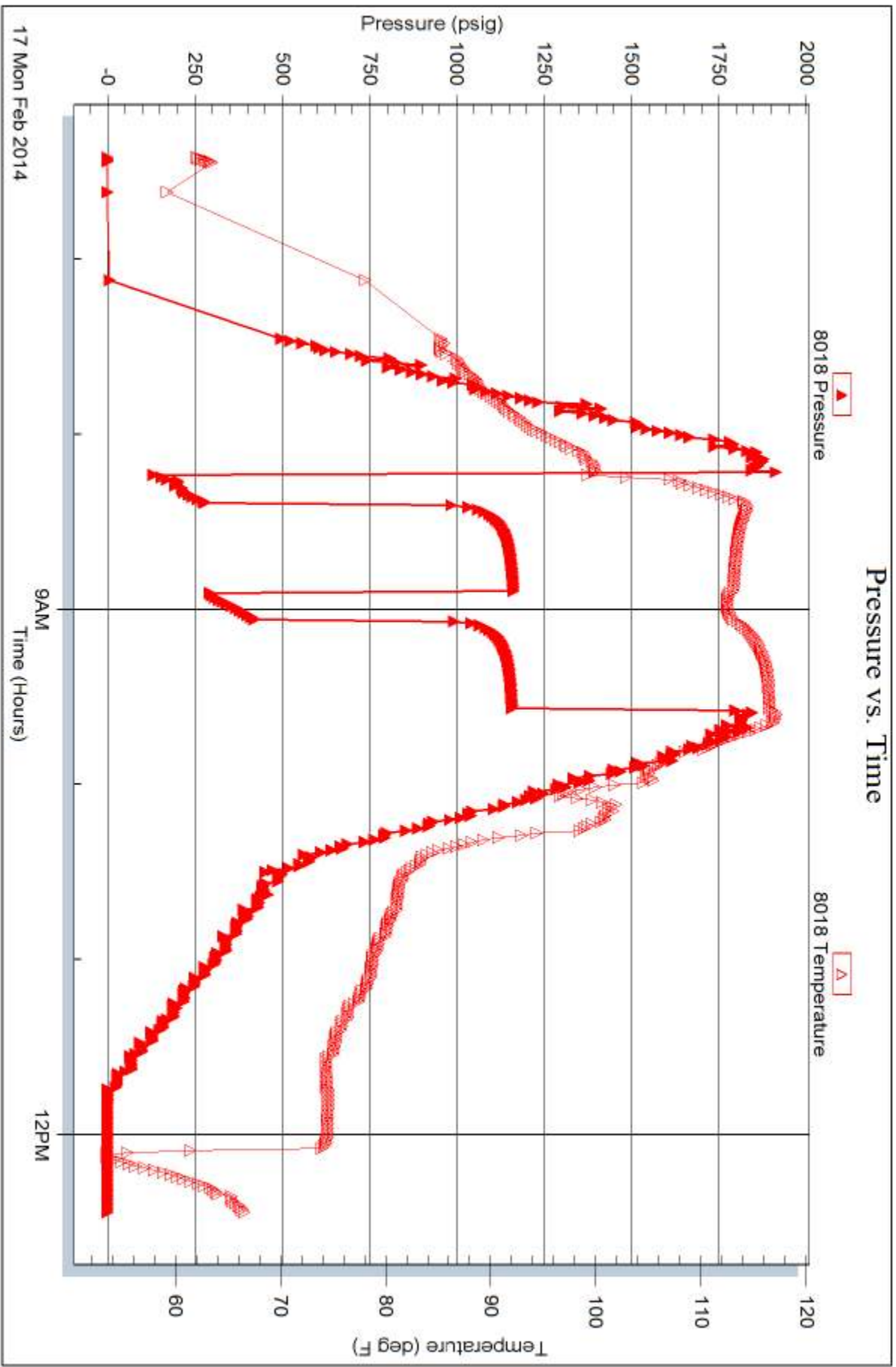
Serial #:

Laboratory Name:

Laboratory Location:

Recovery Comments:







TRILOBITE TESTING INC.

1515 Commerce Parkway • Hays, Kansas 67601

Test Ticket

NO. 56212

Well Name & No. Riedel C # 1-31 Test No. 1 Date 2/16/14
 Company American Warrior, Inc. Elevation 2278 KB 2271 GL
 Address PO Box 399 Garden City KS 67846
 Co. Rep / Geo. Jason Alm Rig Discovery #3
 Location: Sec. 31 Twp. 13s Rge. 19w Co. Ellis State KS

Interval Tested 3673 - 3755 Zone Tested KC "H-J"
 Anchor Length 82 Drill Pipe Run _____ Mud Wt. 8.7
 Top Packer Depth 3668 Drill Collars Run 30 Vis 54
 Bottom Packer Depth 3673 Wt. Pipe Run _____ WL 8.4
 Total Depth 3755 Chlorides 3250 ppm System LCM _____

Blow Description IF - BOB in 29 min
ISI - ~~very weak~~ very weak surface blow
FF - BOB ~~immediately~~ immediately
FSI - very weak surface blow

Rec	Feet of	%gas	%oil	%water	%mud
<u>115</u>	<u>60CM</u>	<u>20</u>	<u>30</u>	<u>50</u>	
Rec _____	Feet of <u>385 ft GIP</u>	%gas	%oil	%water	%mud
Rec _____	Feet of _____	%gas	%oil	%water	%mud
Rec _____	Feet of _____	%gas	%oil	%water	%mud
Rec _____	Feet of _____	%gas	%oil	%water	%mud

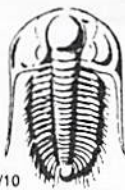
Rec Total 115 BHT _____ Gravity _____ API RW _____ @ _____ °F Chlorides _____ ppm

(A) Initial Hydrostatic 1,774 Test 1150 T-On Location 10:25
 (B) First Initial Flow 16 Jars _____ T-Started 11:05
 (C) First Final Flow 47 Safety Joint _____ T-Open 13:13
 (D) Initial Shut-In 872 Circ Sub _____ T-Pulled 16:13
 (E) Second Initial Flow 36 Hourly Standby _____ T-Out 18:05
 (F) Second Final Flow 64 Mileage 27.7 41.85 Comments _____
 (G) Final Shut-In 940 Sampler _____
 (H) Final Hydrostatic 1,718 Straddle _____ Ruined Shale Packer _____

Initial Open 45 Shale Packer _____ Ruined Packer _____
 Initial Shut-In 45 Extra Packer _____ Extra Copies _____
 Final Flow 45 Extra Recorder _____ Sub Total 0
 Final Shut-In 43 Day Standby _____ Total 1191.85
 Accessibility _____ MP/DST Disc't _____
 Sub Total 1191.85

Approved By _____ Our Representative [Signature]

Trilobite Testing Inc. shall not be liable for damaged of any kind of the property or personnel of the one for whom a test is made, or for any loss suffered or sustained, directly or indirectly, through the use of its equipment, or its statements or opinion concerning the results of any test, tools lost or damaged in the hole shall be paid for at cost by the party for whom the test is made.



TRILOBITE TESTING INC.

1515 Commerce Parkway • Hays, Kansas 67601

Test Ticket

NO. 56213

Well Name & No. Riedel C #1-31 Test No. 2 Date 2/17/14
 Company American Warrior, Inc Elevation 2278 KB 2271 GL
 Address PO Box 399 Garden city KS 67846
 Co. Rep / Geo. Jasen Alm Rig Discovery #3
 Location: Sec. 31 Twp. 13s Rge. 19w Co. Ellis State KS

Interval Tested 3851-3909 Zone Tested Ar6
 Anchor Length 58 Drill Pipe Run _____ Mud Wt. 8.7
 Top Packer Depth 3846 Drill Collars Run 30 Vis 54
 Bottom Packer Depth 3851 Wt. Pipe Run - WL 8.4
 Total Depth 3909 Chlorides 3,250 ppm System LCM 1 1/2

Blow Description IF - BOB in 1 1/2 min
ISF - 4 in blow
FF - BOB in 1 min
FSF - 1 in blow

Rec	Feet of	%gas	%oil	%water	%mud
<u>120</u>	<u>GVSWOCM</u>	<u>70</u>	<u>20</u>	<u>5</u>	<u>65</u>
<u>370</u>	<u>GMCO</u>	<u>20</u>	<u>60</u>	<u>20</u>	<u>20</u>
<u>515</u>	<u>60</u>	<u>20</u>	<u>80</u>		
Rec _____	Feet of _____	%gas _____	%oil _____	%water _____	%mud _____
Rec _____	Feet of <u>180 ft GAP</u>	%gas _____	%oil _____	%water _____	%mud _____

Rec Total 1005 BHT 118 Gravity 35 API RW _____ @ _____ °F Chlorides _____ ppm

(A) Initial Hydrostatic 1902 Test 1150 T-On Location 5:45
 (B) First Initial Flow 121 Jars _____ T-Started 6:25
 (C) First Final Flow 294 Safety Joint _____ T-Open 8:15
 (D) Initial Shut-In 1,164 Circ Sub _____ T-Pulled 9:35
 (E) Second Initial Flow 292 Hourly Standby _____ T-Out 12:30
 (F) Second Final Flow 423 Mileage 27.1 41.85 Comments _____
 (G) Final Shut-In 1,160 Sampler _____
 (H) Final Hydrostatic 1,851 Straddle _____ Ruined Shale Packer _____
 Shale Packer _____ Ruined Packer _____
 Extra Packer _____ Extra Copies _____
 Initial Open 10 Extra Recorder _____ Sub Total 0
 Initial Shut-In 30 Day Standby _____ Total 1191.85
 Final Flow 10 Accessibility _____ MP/DST Disc't _____
 Final Shut-In 30 Sub Total 1191.85

Approved By _____ Our Representative Butt Dickinson

Trilobite Testing Inc. shall not be liable for damaged of any kind of the property or personnel of the one for whom a test is made, or for any loss suffered or sustained, directly or indirectly, through the use of its equipment, or its statements or opinion concerning the results of any test, tools lost or damaged in the hole shall be paid for at cost by the party for whom the test is made.