



DRILL STEM TEST REPORT

Prepared For: **Blue Ridge Petroleum Corp**

P.O. Box 1913
Enid, OK 73702

ATTN: Clint Musgrove

Suavage #3-11

11-3s-29w Decatur,KS

Start Date: 2014.03.07 @ 12:37:00

End Date: 2014.03.07 @ 21:38:30

Job Ticket #: 56907 DST #: 1

Trilobite Testing, Inc
PO Box 362 Hays, KS 67601
ph: 785-625-4778 fax: 785-625-5620

Printed: 2014.03.11 @ 15:52:38



**TRILOBITE
TESTING, INC**

DRILL STEM TEST REPORT

Blue Ridge Petroleum Corp

11-3s-29w Decatur, KS

P.O. Box 1913
Enid, OK 73702

Suavage #3-11

Job Ticket: 56907

DST#: 1

ATTN: Clint Musgrove

Test Start: 2014.03.07 @ 12:37:00

GENERAL INFORMATION:

Formation: **LKC-A**

Deviated: No Whipstock: ft (KB)

Time Tool Opened: 16:01:30

Time Test Ended: 21:38:30

Test Type: Conventional Bottom Hole (Initial)

Tester: Royal Fisher

Unit No: #54

Interval: 3577.00 ft (KB) To 3608.00 ft (KB) (TVD)

Reference Elevations: 2573.00 ft (KB)

Total Depth: 3608.00 ft (KB) (TVD)

2564.00 ft (CF)

Hole Diameter: 7.88 inches Hole Condition: Good

KB to GR/CF: 9.00 ft

Serial #: 8368

Inside

Press@RunDepth: 73.47 psig @ 3578.00 ft (KB)

Capacity: 8000.00 psig

Start Date: 2014.03.07

End Date:

2014.03.07

Last Calib.:

2014.03.07

Start Time: 12:37:05

End Time:

21:38:30

Time On Btm:

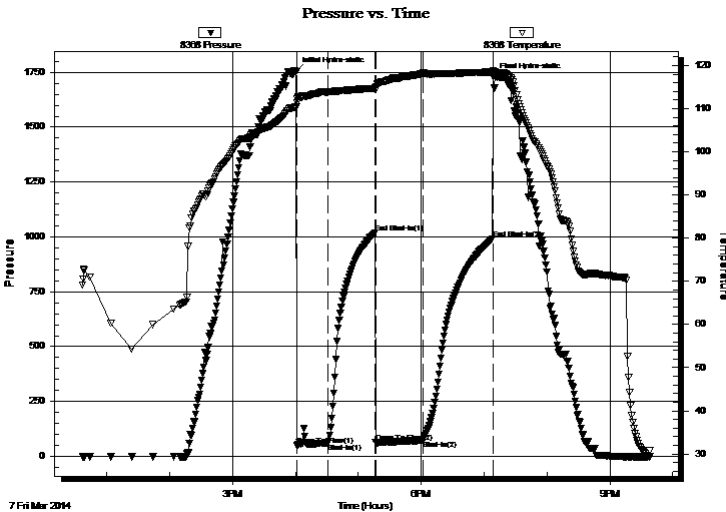
2014.03.07 @ 16:00:45

Time Off Btm:

2014.03.07 @ 19:08:30

TEST COMMENT: 30 - IF - Surface blow built to 2"
45 - ISI - No Return
45 - FF - got a weak surface blow in 10 min. built to 1"
60 - FSI - No Return

PRESSURE SUMMARY



Time (Min.)	Pressure (psig)	Temp (deg F)	Annotation
0	1755.06	110.36	Initial Hydro-static
1	50.83	111.26	Open To Flow (1)
31	60.01	113.84	Shut-In(1)
75	1019.57	114.73	End Shut-In(1)
76	63.93	114.41	Open To Flow (2)
121	73.47	118.27	Shut-In(2)
188	991.21	118.51	End Shut-In(2)
188	1727.97	118.87	Final Hydro-static

Recovery

Length (ft)	Description	Volume (bbl)
126.00	OCM - 90M - 10o	1.77
5.00	OCM - 65M - 35o	0.07

Gas Rates

	Choke (inches)	Pressure (psig)	Gas Rate (Mcf/d)



**TRILOBITE
TESTING, INC**

DRILL STEM TEST REPORT

TOOL DIAGRAM

Blue Ridge Petroleum Corp

11-3s-29w Decatur,KS

P.O. Box 1913
Enid, OK 73702

Suavage #3-11

Job Ticket: 56907

DST#: 1

ATTN: Clint Musgrove

Test Start: 2014.03.07 @ 12:37:00

Tool Information

Drill Pipe:	Length: 3578.00 ft	Diameter: 3.80 inches	Volume: 50.19 bbl	Tool Weight: 2500.00 lb
Heavy Wt. Pipe:	Length: 0.00 ft	Diameter: 0.00 inches	Volume: 0.00 bbl	Weight set on Packer: 25000.00 lb
Drill Collar:	Length: 0.00 ft	Diameter: 2.25 inches	Volume: 0.00 bbl	Weight to Pull Loose: 60000.00 lb
			<u>Total Volume: 50.19 bbl</u>	Tool Chased 15.00 ft
Drill Pipe Above KB:	20.00 ft			String Weight: Initial 40000.00 lb
Depth to Top Packer:	3577.00 ft			Final 43000.00 lb
Depth to Bottom Packer:	ft			
Interval between Packers:	31.00 ft			
Tool Length:	50.00 ft			
Number of Packers:	2	Diameter: 6.75 inches		

Tool Comments:

Tool Description

Tool Description	Length (ft)	Serial No.	Position	Depth (ft)	Accum. Lengths
Shut In Tool	5.00			3563.00	
Hydraulic tool	5.00			3568.00	
Packer	4.00			3572.00	19.00 Bottom Of Top Packer
Packer	5.00			3577.00	
Stubb	1.00			3578.00	
Recorder	0.00	8368	Inside	3578.00	
Recorder	0.00	6741	Inside	3578.00	
Perforations	26.00			3604.00	
Bullnose	4.00			3608.00	31.00 Bottom Packers & Anchor
Total Tool Length:	50.00				



**TRILOBITE
TESTING, INC**

DRILL STEM TEST REPORT

FLUID SUMMARY

Blue Ridge Petroleum Corp

11-3s-29w Decatur,KS

P.O. Box 1913
Enid, OK 73702

Suavage #3-11

Job Ticket: 56907

DST#: 1

ATTN: Clint Musgrove

Test Start: 2014.03.07 @ 12:37:00

Mud and Cushion Information

Mud Type: Gel Chem

Cushion Type:

Oil API:

deg API

Mud Weight: 9.00 lb/gal

Cushion Length:

ft

Water Salinity:

ppm

Viscosity: 50.00 sec/qt

Cushion Volume:

bbbl

Water Loss: 5.78 in³

Gas Cushion Type:

Resistivity: 0.00 ohm.m

Gas Cushion Pressure:

psig

Salinity: 900.00 ppm

Filter Cake: 1.00 inches

Recovery Information

Recovery Table

Length ft	Description	Volume bbl
126.00	OCM - 90M - 10o	1.767
5.00	OCM - 65M - 35o	0.070

Total Length: 131.00 ft Total Volume: 1.837 bbl

Num Fluid Samples: 0

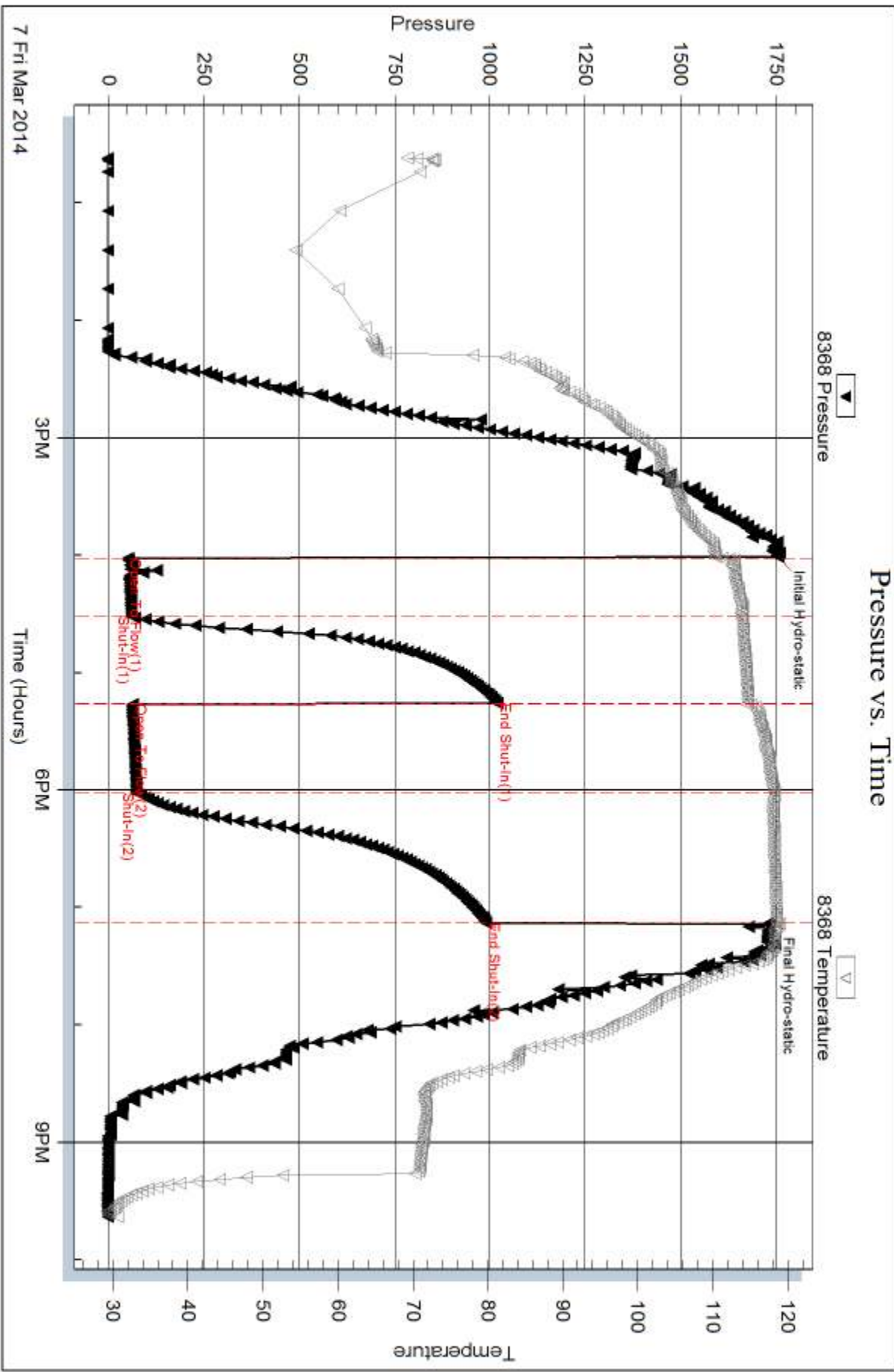
Num Gas Bombs: 0

Serial #:

Laboratory Name:

Laboratory Location:

Recovery Comments:



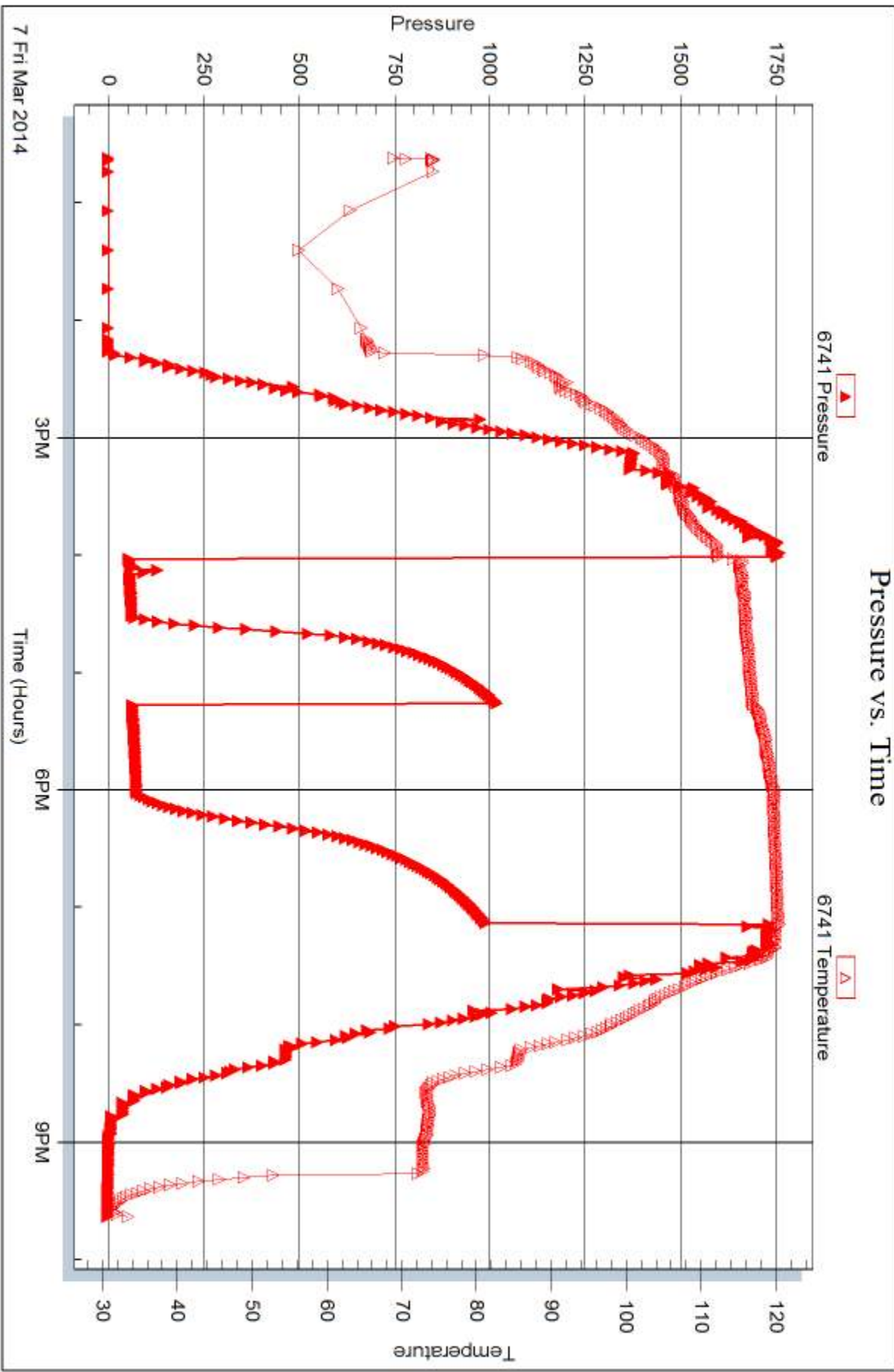
Serial #: 6741

Inside

Blue Ridge Petroleum Corp

Sluavage #3-11

DST Test Number: 1





DRILL STEM TEST REPORT

Prepared For: **Blue Ridge Petroleum Corp**

P.O. Box 1913
Enid, OK 73702

ATTN: Clint Musgrove

Suavage #3-11

11-3s-29w Decatur,KS

Start Date: 2014.03.08 @ 09:00:00

End Date: 2014.03.08 @ 17:00:15

Job Ticket #: 56908 DST #: 2

Trilobite Testing, Inc
PO Box 362 Hays, KS 67601
ph: 785-625-4778 fax: 785-625-5620

Printed: 2014.03.11 @ 15:52:09



TRILOBITE TESTING, INC

DRILL STEM TEST REPORT

Blue Ridge Petroleum Corp

11-3s-29w Decatur, KS

P.O. Box 1913
Enid, OK 73702

Suavage #3-11

Job Ticket: 56908

DST#: 2

ATTN: Clint Musgrove

Test Start: 2014.03.08 @ 09:00:00

GENERAL INFORMATION:

Formation: **LKC-B**

Deviated: No Whipstock: ft (KB)

Time Tool Opened: 12:51:45

Time Test Ended: 17:00:15

Test Type: Conventional Bottom Hole (Initial)

Tester: Royal Fisher

Unit No: #54

Interval: 3608.00 ft (KB) To 3626.00 ft (KB) (TVD)

Reference Elevations: 2573.00 ft (KB)

Total Depth: 3626.00 ft (KB) (TVD)

2564.00 ft (CF)

Hole Diameter: 7.88 inches Hole Condition: Good

KB to GR/CF: 9.00 ft

Serial #: 8368

Inside

Press@RunDepth: 18.52 psig @ 3609.00 ft (KB)

Capacity: 8000.00 psig

Start Date: 2014.03.08

End Date: 2014.03.08

Last Calib.: 2014.03.08

Start Time: 09:00:05

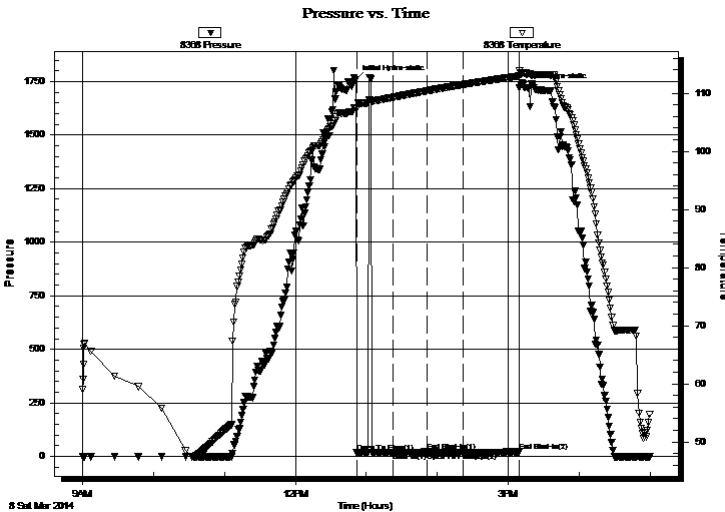
End Time: 17:00:14

Time On Btm: 2014.03.08 @ 12:51:15

Time Off Btm: 2014.03.08 @ 15:09:45

TEST COMMENT: 30 - IF - Surface blow built to 1/4" and stayed
30 - ISI - No Return
30 - FF - Blow started with a weak surface blow then died off
45 - FSI - No Return

PRESSURE SUMMARY



Time (Min.)	Pressure (psig)	Temp (deg F)	Annotation
0	1759.74	107.46	Initial Hydro-static
1	17.25	107.38	Open To Flow (1)
32	18.30	109.27	Shut-In(1)
61	21.78	110.38	End Shut-In(1)
61	17.64	110.39	Open To Flow (2)
91	18.52	111.45	Shut-In(2)
139	21.98	112.94	End Shut-In(2)
139	1721.21	113.90	Final Hydro-static

Recovery

Length (ft)	Description	Volume (bbl)
10.00	Mud - 100M	0.14

Gas Rates

	Choke (inches)	Pressure (psig)	Gas Rate (Mcf/d)



**TRILOBITE
TESTING, INC**

DRILL STEM TEST REPORT

TOOL DIAGRAM

Blue Ridge Petroleum Corp

11-3s-29w Decatur,KS

P.O. Box 1913
Enid, OK 73702

Suavage #3-11

Job Ticket: 56908

DST#: 2

ATTN: Clint Musgrove

Test Start: 2014.03.08 @ 09:00:00

Tool Information

Drill Pipe:	Length: 3608.00 ft	Diameter: 3.80 inches	Volume: 50.61 bbl	Tool Weight: 2500.00 lb
Heavy Wt. Pipe:	Length: 0.00 ft	Diameter: 0.00 inches	Volume: 0.00 bbl	Weight set on Packer: 25000.00 lb
Drill Collar:	Length: 0.00 ft	Diameter: 2.25 inches	Volume: 0.00 bbl	Weight to Pull Loose: 60000.00 lb
			<u>Total Volume: 50.61 bbl</u>	Tool Chased 5.00 ft
Drill Pipe Above KB:	19.00 ft			String Weight: Initial 40000.00 lb
Depth to Top Packer:	3608.00 ft			Final 40000.00 lb
Depth to Bottom Packer:	ft			
Interval between Packers:	19.00 ft			
Tool Length:	38.00 ft			
Number of Packers:	2	Diameter: 6.75 inches		

Tool Comments:

Tool Description

Tool Description	Length (ft)	Serial No.	Position	Depth (ft)	Accum. Lengths
Shut In Tool	5.00			3594.00	
Hydraulic tool	5.00			3599.00	
Packer	4.00			3603.00	19.00 Bottom Of Top Packer
Packer	5.00			3608.00	
Stubb	1.00			3609.00	
Recorder	0.00	8368	Inside	3609.00	
Recorder	0.00	6741	Inside	3609.00	
Perforations	14.00			3623.00	
Bullnose	4.00			3627.00	19.00 Bottom Packers & Anchor
Total Tool Length:	38.00				



**TRILOBITE
TESTING, INC**

DRILL STEM TEST REPORT

FLUID SUMMARY

Blue Ridge Petroleum Corp

11-3s-29w Decatur,KS

P.O. Box 1913
Enid, OK 73702

Suavage #3-11

Job Ticket: 56908

DST#: 2

ATTN: Clint Musgrove

Test Start: 2014.03.08 @ 09:00:00

Mud and Cushion Information

Mud Type: Gel Chem

Cushion Type:

Oil API:

deg API

Mud Weight: 9.00 lb/gal

Cushion Length:

ft

Water Salinity:

ppm

Viscosity: 50.00 sec/qt

Cushion Volume:

bbbl

Water Loss: 5.79 in³

Gas Cushion Type:

Resistivity: 0.00 ohm.m

Gas Cushion Pressure:

psig

Salinity: 900.00 ppm

Filter Cake: 1.00 inches

Recovery Information

Recovery Table

Length ft	Description	Volume bbl
10.00	Mud - 100M	0.140

Total Length: 10.00 ft Total Volume: 0.140 bbl

Num Fluid Samples: 0

Num Gas Bombs: 0

Serial #:

Laboratory Name:

Laboratory Location:

Recovery Comments:

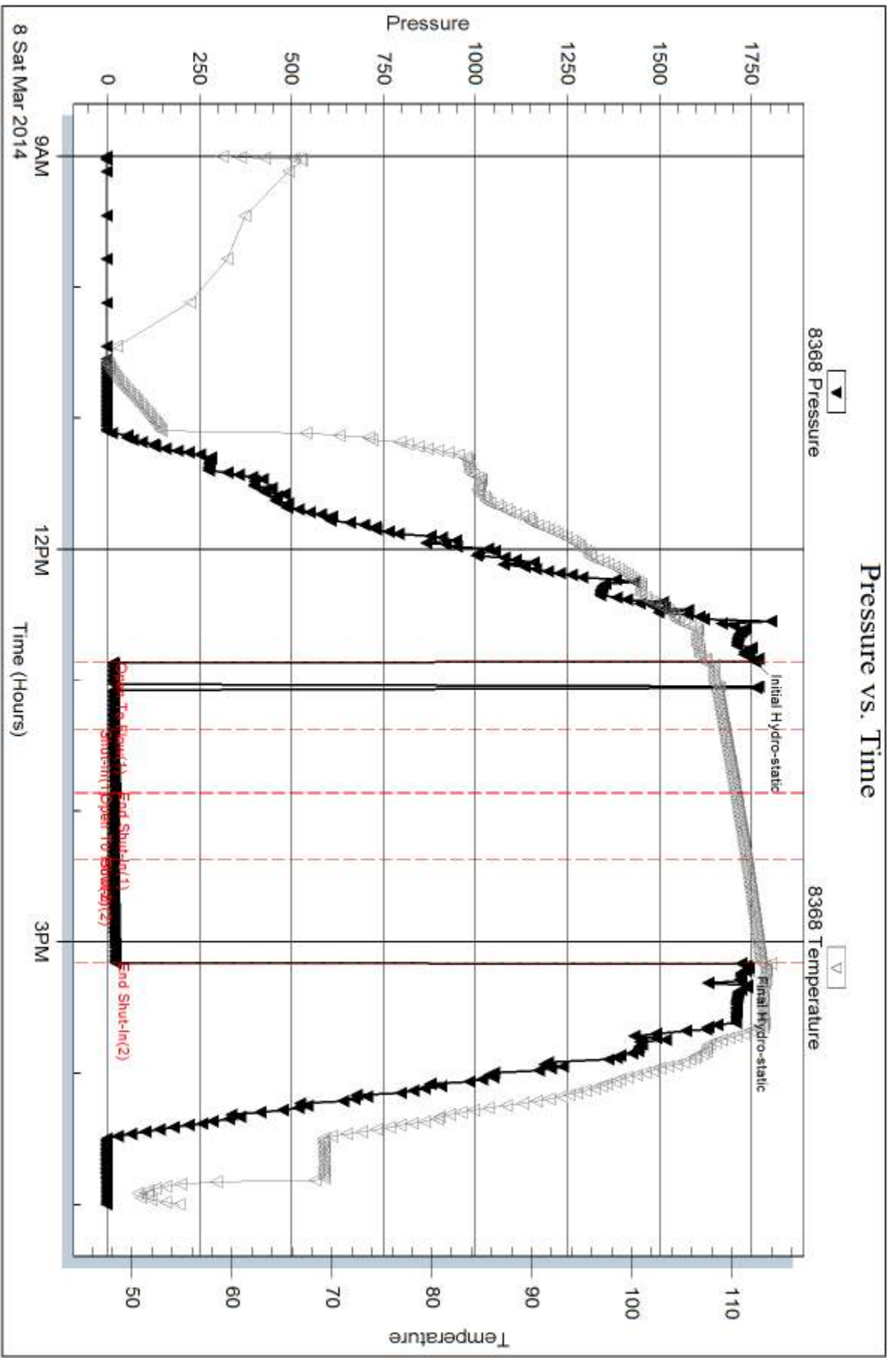
Serial #: 8368

Inside

Blue Ridge Petroleum Corp

Sluavage #3-11

DST Test Number: 2



Trilobite Testing, Inc

Ref. No: 56908

Printed: 2014.03.11 @ 15:52:11

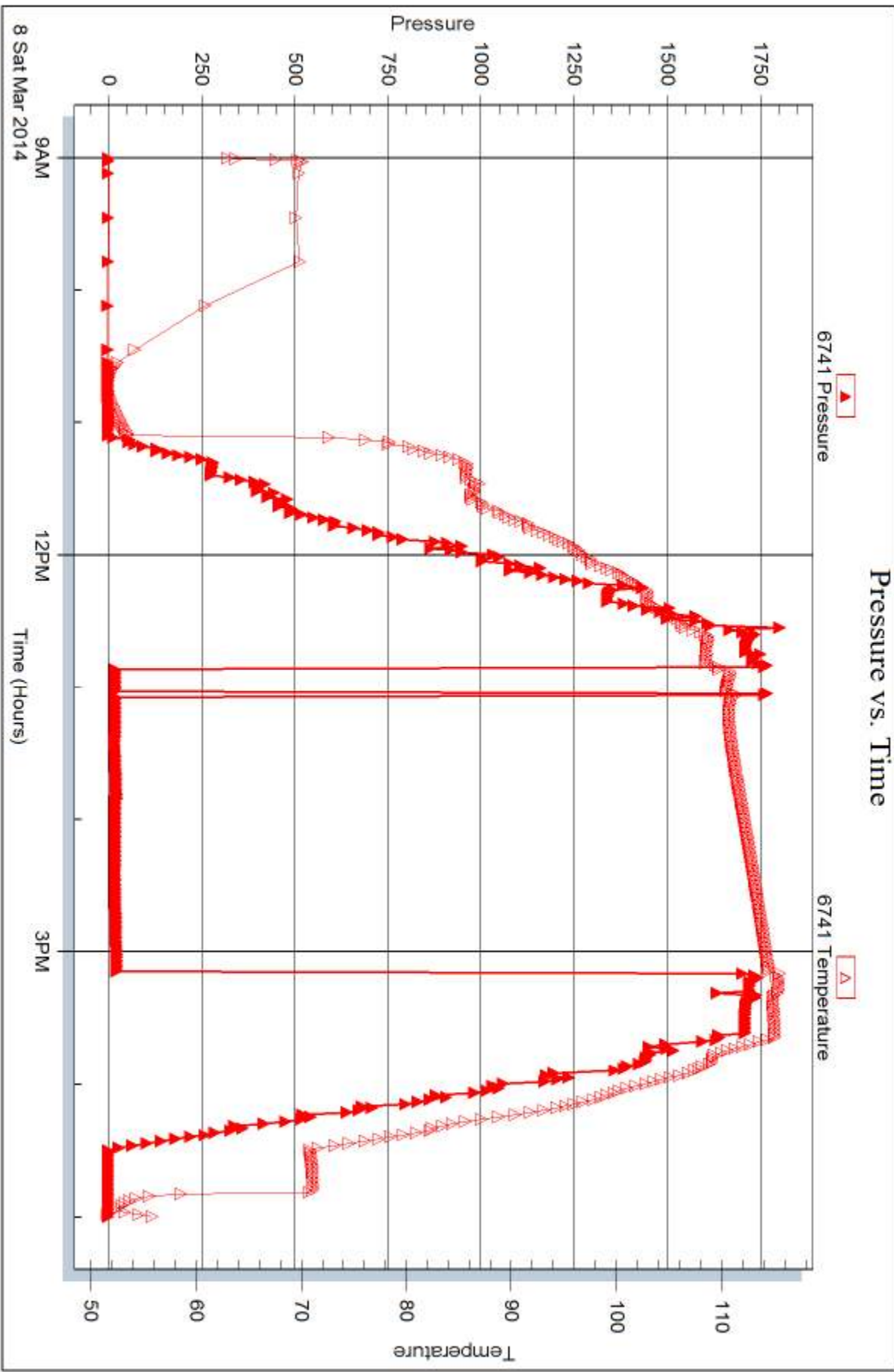
Serial #: 6741

Inside

Blue Ridge Petroleum Corp

Sluavage #3-11

DST Test Number: 2





DRILL STEM TEST REPORT

Prepared For: **Blue Ridge Petroleum Corp**

P.O. Box 1913
Enid, OK 73702

ATTN: Clint Musgrove

Suavage #3-11

11-3s-29w Decatur,KS

Start Date: 2014.03.09 @ 05:45:00

End Date: 2014.03.09 @ 14:03:15

Job Ticket #: 56909 DST #: 3

Trilobite Testing, Inc
PO Box 362 Hays, KS 67601
ph: 785-625-4778 fax: 785-625-5620

Printed: 2014.03.11 @ 15:51:48



TRILOBITE TESTING, INC.

DRILL STEM TEST REPORT

Blue Ridge Petroleum Corp

11-3s-29w Decatur, KS

P.O. Box 1913
Enid, OK 73702

Suavage #3-11

Job Ticket: 56909

DST#: 3

ATTN: Clint Musgrove

Test Start: 2014.03.09 @ 05:45:00

GENERAL INFORMATION:

Formation: **LKC D-F**

Deviated: No Whipstock: ft (KB)

Time Tool Opened: 08:02:15

Time Test Ended: 14:03:15

Test Type: Conventional Bottom Hole (Initial)

Tester: Royal Fisher

Unit No: #54

Interval: 3626.00 ft (KB) To 3700.00 ft (KB) (TVD)

Reference Elevations: 2573.00 ft (KB)

Total Depth: 3700.00 ft (KB) (TVD)

2564.00 ft (CF)

Hole Diameter: 7.88 inches Hole Condition: Good

KB to GR/CF: 9.00 ft

Serial #: 8368

Inside

Press@RunDepth: 372.62 psig @ 3627.00 ft (KB)

Capacity: 8000.00 psig

Start Date: 2014.03.09

End Date: 2014.03.09

Last Calib.: 2014.03.09

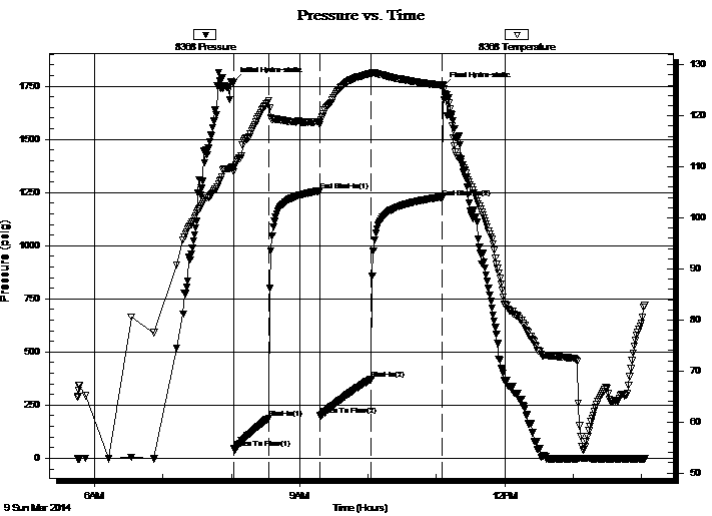
Start Time: 05:45:05

End Time: 14:03:14

Time On Btm: 2014.03.09 @ 08:02:00

Time Off Btm: 2014.03.09 @ 11:05:45

TEST COMMENT: 30 - IF - Surface blow built to bottom of bucket in 10 min.
45 - ISI - No Return
45 - FF - Surface blow built to bottom of bucket in 8 min.
60 - FSI - No Return



PRESSURE SUMMARY

Time (Min.)	Pressure (psig)	Temp (deg F)	Annotation
0	1769.30	109.94	Initial Hydro-static
1	45.83	109.09	Open To Flow (1)
31	188.60	122.99	Shut-In(1)
76	1257.74	118.81	End Shut-In(1)
76	202.23	118.20	Open To Flow (2)
121	372.62	128.25	Shut-In(2)
184	1227.11	125.96	End Shut-In(2)
184	1746.65	126.07	Final Hydro-static

Recovery

Length (ft)	Description	Volume (bbl)
382.00	OSWM - 60M - 40W - oil spots	5.36
382.00	OSMW - 30M - 70W - oil spots	5.36

Gas Rates

	Choke (inches)	Pressure (psig)	Gas Rate (Mcf/d)



**TRILOBITE
TESTING, INC**

DRILL STEM TEST REPORT

TOOL DIAGRAM

Blue Ridge Petroleum Corp

11-3s-29w Decatur,KS

P.O. Box 1913
Enid, OK 73702

Suavage #3-11

Job Ticket: 56909

DST#: 3

ATTN: Clint Musgrove

Test Start: 2014.03.09 @ 05:45:00

Tool Information

Drill Pipe:	Length: 3609.00 ft	Diameter: 3.80 inches	Volume: 50.62 bbl	Tool Weight: 2500.00 lb
Heavy Wt. Pipe:	Length: 0.00 ft	Diameter: 0.00 inches	Volume: 0.00 bbl	Weight set on Packer: 25000.00 lb
Drill Collar:	Length: 0.00 ft	Diameter: 2.25 inches	Volume: 0.00 bbl	Weight to Pull Loose: 60000.00 lb
			<u>Total Volume: 50.62 bbl</u>	Tool Chased 5.00 ft
Drill Pipe Above KB:	2.00 ft			String Weight: Initial 40000.00 lb
Depth to Top Packer:	3626.00 ft			Final 46000.00 lb
Depth to Bottom Packer:	ft			
Interval between Packers:	74.00 ft			
Tool Length:	93.00 ft			
Number of Packers:	2	Diameter: 6.75 inches		

Tool Comments:

Tool Description

Tool Description	Length (ft)	Serial No.	Position	Depth (ft)	Accum. Lengths
Shut In Tool	5.00			3612.00	
Hydraulic tool	5.00			3617.00	
Packer	4.00			3621.00	19.00 Bottom Of Top Packer
Packer	5.00			3626.00	
Stubb	1.00			3627.00	
Recorder	0.00	8368	Inside	3627.00	
Recorder	0.00	6741	Inside	3627.00	
Perforations	31.00			3658.00	
Change Over Sub	1.00			3659.00	
Drill Pipe	36.00			3695.00	
Change Over Sub	1.00			3696.00	
Bullnose	4.00			3700.00	74.00 Bottom Packers & Anchor

Total Tool Length: 93.00



**TRILOBITE
TESTING, INC**

DRILL STEM TEST REPORT

FLUID SUMMARY

Blue Ridge Petroleum Corp

11-3s-29w Decatur,KS

P.O. Box 1913
Enid, OK 73702

Suavage #3-11

Job Ticket: 56909

DST#: 3

ATTN: Clint Musgrove

Test Start: 2014.03.09 @ 05:45:00

Mud and Cushion Information

Mud Type: Gel Chem

Cushion Type:

Oil API:

deg API

Mud Weight: 9.00 lb/gal

Cushion Length:

ft

Water Salinity:

80000 ppm

Viscosity: 57.00 sec/qt

Cushion Volume:

bbbl

Water Loss: 5.99 in³

Gas Cushion Type:

Resistivity: 0.00 ohm.m

Gas Cushion Pressure:

psig

Salinity: 1000.00 ppm

Filter Cake: 1.00 inches

Recovery Information

Recovery Table

Length ft	Description	Volume bbbl
382.00	OSWM - 60M - 40W - oil spots	5.358
382.00	OSMW - 30M - 70W - oil spots	5.358

Total Length: 764.00 ft Total Volume: 10.716 bbl

Num Fluid Samples: 0

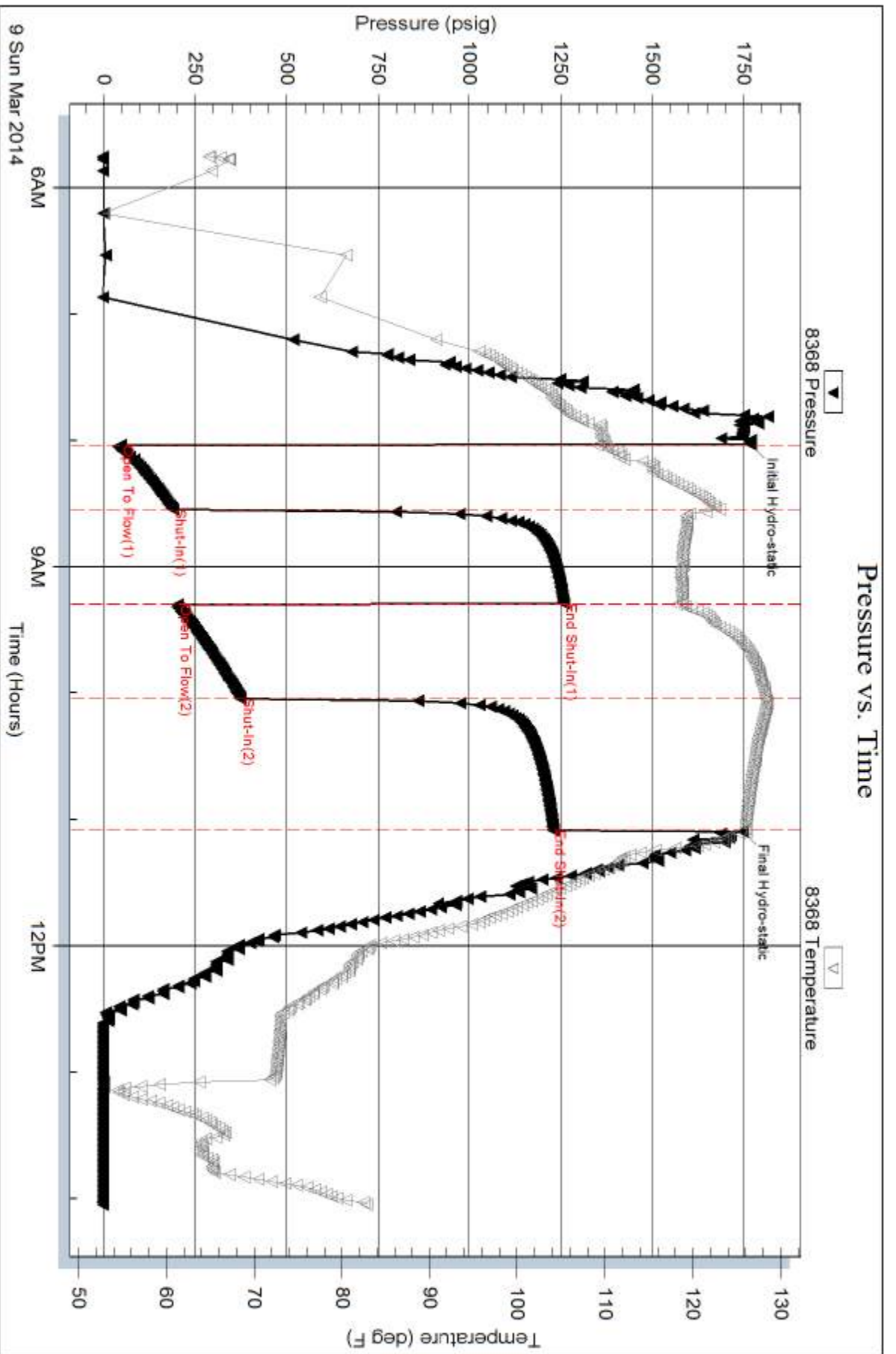
Num Gas Bombs: 0

Serial #:

Laboratory Name:

Laboratory Location:

Recovery Comments:



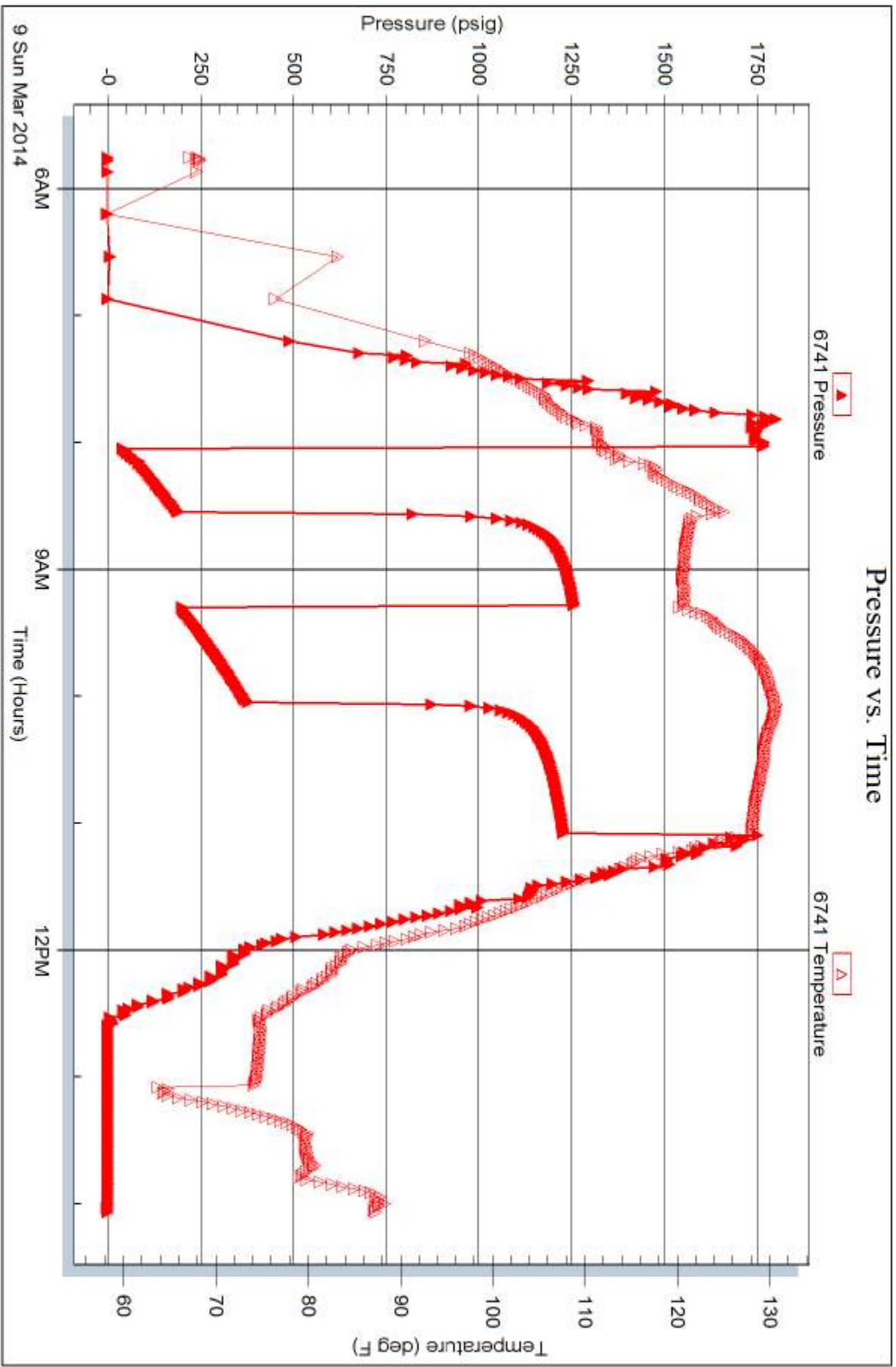
Serial #: 6741

Inside

Blue Ridge Petroleum Corp

Sluavage #3-11

DST Test Number: 3





TRILOBITE TESTING INC.

1515 Commerce Parkway • Hays, Kansas 67601

Test Ticket

NO. 56907

4/10

Well Name & No. Savage #3-11 Test No. 1 Date 3-7-14
 Company Blueridge Petroleum Corp. Elevation 2573 KB 2564 GL
 Address P.O. Box 1913 Enid, OK 73702
 Co. Rep / Geo. Clint Mustgrove Rig Southwind #8
 Location: Sec. 11 Twp. 03S Rge. 29 W Co. Decatur State KS

Interval Tested 3577-3608 Zone Tested LKC-A
 Anchor Length 31' Drill Pipe Run 3570 Mud Wt. 9.1
 Top Packer Depth 3573 Drill Collars Run 0 Vis 50
 Bottom Packer Depth 3577 Wt. Pipe Run 0 WL 5.8
 Total Depth 3608 Chlorides 900 ppm System LCM 2#

Blow Description IF - Surface blow built to 2"
ISI - No Return
FF - 10 min. got a weak surface blow built to 1"
FSL - No Return

Rec	Feet of	%gas	%oil	%water	%mud
<u>5'</u>	<u>0cm</u>	<u>35</u>		<u>65</u>	
<u>126'</u>	<u>0cm</u>	<u>10</u>		<u>90</u>	
Rec	Feet of	%gas	%oil	%water	%mud
Rec	Feet of	%gas	%oil	%water	%mud

Rec Total 131' BHT 118°F Gravity _____ API RW _____ @ _____ °F Chlorides _____ ppm

(A) Initial Hydrostatic 1755 Test 1150 T-On Location 11:10 am
 (B) First Initial Flow 50 Jars _____ T-Started 12:37pm
 (C) First Final Flow 60 Safety Joint _____ T-Open 4:01pm
 (D) Initial Shut-In 1,019 Circ Sub _____ T-Pulled 7:01pm
 (E) Second Initial Flow 63 Hourly Standby _____ T-Out 9:38
 (F) Second Final Flow 73 Mileage 5 R/T 7.75 Comments based tool 15'
 (G) Final Shut-In 991 Sampler _____ to bottom
 (H) Final Hydrostatic 1727 Straddle _____ Master Pump ←
 Ruined Shale Packer _____
 Shale Packer _____
 Ruined Packer _____
 Extra Packer _____
 Extra Copies _____
 Extra Recorder _____ Sub Total 0
 Day Standby _____ Total 1157.75
 Accessibility _____ MP/DST Disc't _____
 Sub Total 1157.75

Approved By _____ Our Representative [Signature]

Trilobite Testing Inc. shall not be liable for damaged of any kind of the property or personnel of the one for whom a test is made, or for any loss suffered or sustained, directly or indirectly, through the use of its equipment, or its statements or opinion concerning the results of any test, tools lost or damaged in the hole shall be paid for at cost by the party for whom the test is made.



TRILOBITE TESTING INC.

1515 Commerce Parkway • Hays, Kansas 67601

Test Ticket

NO. 56908

Well Name & No. Savage #3-11 Test No. 2 Date 3-8-14
 Company Blueridge Petroleum Corp. Elevation 2573 KB 2564 GL
 Address P.O. Box 1913 Enid, OK 73702
 Co. Rep / Geo. Clint Muskgrave Rig Southwind #8
 Location: Sec. 11 Twp. 3S Rge. 29W Co. Decatur State KS

Interval Tested 3608-3626 Zone Tested LKC-B
 Anchor Length 18' Drill Pipe Run 3608 Mud Wt. 9.1
 Top Packer Depth 3604 Drill Collars Run 0 Vis 50
 Bottom Packer Depth 3608 Wt. Pipe Run 0 WL 5.8
 Total Depth 3626 Chlorides 900 ppm System LCM 2#

Blow Description IF - surface blow built to a 1/4"
ISI - No return
FF - blow started with a weak surface blow then died off
FSI - No return

Rec	Feet of	%gas	%oil	%water	%mud
<u>10'</u>	<u>Mud</u>			<u>100</u>	

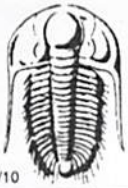
Rec Total 10' BHT 112°F Gravity _____ API RW _____ @ _____ °F Chlorides _____ ppm

(A) Initial Hydrostatic 1759 Test 1150 T-On Location 8:05am
 (B) First Initial Flow 17 Jars _____ T-Started 9:00am
 (C) First Final Flow 18 Safety Joint _____ T-Open 12:51pm
 (D) Initial Shut-In 21 Circ Sub _____ T-Pulled 3:06pm
 (E) Second Initial Flow 17 Hourly Standby _____ T-Out 5:00pm
 (F) Second Final Flow 18 Mileage 5 BHT 7.75 Comments chased tool
 (G) Final Shut-In 21 Sampler _____ 5ft to bottom
 (H) Final Hydrostatic 1721 Straddle _____ Monster Pump ←

Initial Open 30 Shale Packer _____ Ruined Shale Packer _____
 Initial Shut-In 30 Extra Packer _____ Ruined Packer _____
 Final Flow 30 Extra Recorder _____ Sub Total 0
 Final Shut-In 45 Day Standby _____ Total 1157.75
 Accessibility _____ MP/DST Disc't _____
 Sub Total 1157.75

Approved By _____ Our Representative [Signature]

Trilobite Testing Inc. shall not be liable for damaged of any kind of the property or personnel of the one for whom a test is made, or for any loss suffered or sustained, directly or indirectly, through the use of its equipment, or its statements or opinion concerning the results of any test, tools lost or damaged in the hole shall be paid for at cost by the party for whom the test is made.



TRILOBITE TESTING INC.

1515 Commerce Parkway • Hays, Kansas 67601

Test Ticket

NO. 56909

Well Name & No. Savage #3-11 Test No. 3 Date 3-9-14
 Company Blueridge Elevation 2573 KB 2564 GL
 Address P.O. Box 1913 Enid OK 73702
 Co. Rep / Geo. Clint Muskgrave Rig Southwind #8
 Location: Sec. 11 Twp. 3S Rge. 29W Co. Decatur State KS

Interval Tested 3626-3700 Zone Tested LKC-D,E,F
 Anchor Length 74' Drill Pipe Run 3609 Mud Wt. 9.1
 Top Packer Depth 3622 Drill Collars Run 0 Vis 57
 Bottom Packer Depth 3626 Wt. Pipe Run 0 WL 6.0
 Total Depth 3700 Chlorides 1,000 ppm System LCM 2#
 Blow Description IF-Surface blow built to bottom of bucket in 10 min.
ISI-No Return
FF-Surface blow built to bottom of bucket in 8 min.
FSI-No Return

Rec	Feet of	%gas	Spots	%oil	%water	%mud
382'	OSWM			40	60	
382'	OSMW			70	30	

Rec Total 764' BHT 126°F Gravity _____ API RW 128 @ 64 °F Chlorides 80,000 ppm

(A) Initial Hydrostatic 1769 Test 1150 T-On Location 4:45am
 (B) First Initial Flow 45 Jars _____ T-Started 5:45am
 (C) First Final Flow 188 Safety Joint _____ T-Open 8:03am
 (D) Initial Shut-In 1257 Circ Sub N/C T-Pulled 11:03am
 (E) Second Initial Flow 202 Hourly Standby _____ T-Out 2:04pm
 (F) Second Final Flow 372 Mileage 5 R/T 15.50 Comments Chased 5' to bottom
 (G) Final Shut-In 1227 Sampler _____ Monster Pump ←
 (H) Final Hydrostatic 1746 Straddle _____ Ruined Shale Packer _____
 Shale Packer Picked up tool Ruined Packer _____
 Extra Packer 3-10-14 on location Extra Copies _____
 Extra Recorder at 9:00am Sub Total 0
 Day Standby _____ Total 1165.50
 Accessibility _____ MP/DST Disc't _____
 Sub Total 1165.50

Approved By _____ Our Representative Clint Fedor

Trilobite Testing Inc. shall not be liable for damaged of any kind of the property or personnel of the one for whom a test is made, or for any loss suffered or sustained, directly or indirectly, through the use of its equipment, or its statements or opinion concerning the results of any test, tools lost or damaged in the hole shall be paid for at cost by the party for whom the test is made.