



DRILL STEM TEST REPORT

Prepared For: **American Warrior Inc**

PO Box 399
Garden City KS. 67846

ATTN: Kevin Timson

Clark #1-2

2-25s-31w Finney,KS

Start Date: 2014.03.13 @ 00:15:00

End Date: 2014.03.13 @ 08:32:30

Job Ticket #: 56162 DST #: 1

Trilobite Testing, Inc
PO Box 362 Hays, KS 67601
ph: 785-625-4778 fax: 785-625-5620

Printed: 2014.03.17 @ 09:51:46



**TRILOBITE
TESTING, INC**

DRILL STEM TEST REPORT

American Warrior Inc
PO Box 399
Garden City KS. 67846
ATTN: Kevin Timson

2-25s-31w Finney,KS

Clark #1-2

Job Ticket: 56162 **DST#: 1**
Test Start: 2014.03.13 @ 00:15:00

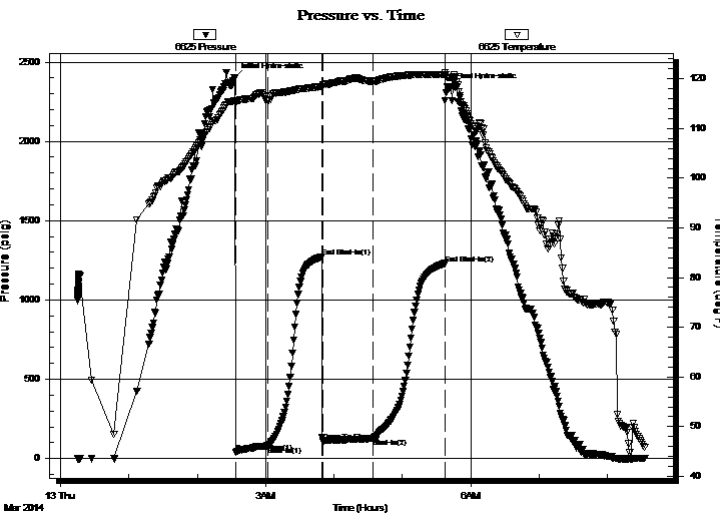
GENERAL INFORMATION:

Formation: **Morrow**
Deviated: No Whipstock: ft (KB)
Time Tool Opened: 02:33:30
Time Test Ended: 08:32:30
Interval: **4816.00 ft (KB) To 4865.00 ft (KB) (TVD)**
Total Depth: 4865.00 ft (KB) (TVD)
Hole Diameter: 7.88 inches Hole Condition: Fair
Test Type: Conventional Bottom Hole (Initial)
Tester: Bob Hamel
Unit No: 67
Reference Elevations: 2844.00 ft (KB)
2833.00 ft (CF)
KB to GR/CF: 11.00 ft

Serial #: 6625 Outside

Press@RunDepth: 126.36 psig @ 4849.00 ft (KB) Capacity: 8000.00 psig
Start Date: 2014.03.13 End Date: 2014.03.13 Last Calib.: 2014.03.13
Start Time: 00:15:01 End Time: 08:32:30 Time On Btm: 2014.03.13 @ 02:32:30
Time Off Btm: 2014.03.13 @ 05:41:00

TEST COMMENT: I.F. - 30 - BOB in 19 min
I.S.I. - 45 - Weak surface blow built to 1/2"
F.F. - 45 - BOB in 2 min
F.S.I. - 60 - Weak surface blow built to 3/4"



PRESSURE SUMMARY

Time (Min.)	Pressure (psig)	Temp (deg F)	Annotation
0	2398.89	115.64	Initial Hydro-static
1	39.78	115.56	Open To Flow (1)
30	80.35	115.60	Shut-In(1)
77	1272.52	118.48	End Shut-In(1)
78	107.58	118.49	Open To Flow (2)
122	126.36	119.50	Shut-In(2)
185	1230.07	120.88	End Shut-In(2)
189	2339.27	120.28	Final Hydro-static

Recovery

Length (ft)	Description	Volume (bbl)
63.00	H,O,C,G, 30% OIL 70% GAS	0.31
83.00	H,G,H,M,C,O, 20% GAS 30%MUD 50%O	0.41
126.00	S,O,C,G,M, 5% OIL 10% GAS 85% MUD	0.87
2.00	CLEAN OIL 100%	0.03
0.00	600' G.I.P.	0.00

Gas Rates

	Choke (inches)	Pressure (psig)	Gas Rate (Mcf/d)



**TRILOBITE
TESTING, INC**

DRILL STEM TEST REPORT

TOOL DIAGRAM

American Warrior Inc
PO Box 399
Garden City KS. 67846
ATTN: Kevin Timson

2-25s-31w Finney,KS
Clark #1-2
Job Ticket: 56162 **DST#: 1**
Test Start: 2014.03.13 @ 00:15:00

Tool Information

Drill Pipe:	Length: 4565.00 ft	Diameter: 3.80 inches	Volume: 64.03 bbl	Tool Weight:	2500.00 lb
Heavy Wt. Pipe:	Length: 0.00 ft	Diameter: 2.70 inches	Volume: 0.00 bbl	Weight set on Packer:	30000.00 lb
Drill Collar:	Length: 245.00 ft	Diameter: 2.25 inches	Volume: 1.20 bbl	Weight to Pull Loose:	75000.00 lb
			<u>Total Volume: 65.23 bbl</u>	Tool Chased	0.00 ft
Drill Pipe Above KB:	14.00 ft			String Weight: Initial	70000.00 lb
Depth to Top Packer:	4816.00 ft			Final	70000.00 lb
Depth to Bottom Packer:	ft				
Interval between Packers:	49.00 ft				
Tool Length:	69.00 ft				
Number of Packers:	2	Diameter:	6.75 inches		
Tool Comments:					

Tool Description

Tool Description	Length (ft)	Serial No.	Position	Depth (ft)	Accum. Lengths
Change Over Sub	1.00			4797.00	
Shut In Tool	5.00			4802.00	
Hydraulic tool	5.00			4807.00	
Packer	4.00			4811.00	20.00 Bottom Of Top Packer
Packer	5.00			4816.00	
Stubb	1.00			4817.00	
Perforations	1.00			4818.00	
Change Over Sub	1.00			4819.00	
Drill Pipe	29.00			4848.00	
Change Over Sub	1.00			4849.00	
Recorder	0.00	6625	Outside	4849.00	
Recorder	0.00	8166	Inside	4849.00	
Perforations	12.00			4861.00	
Bullnose	4.00			4865.00	49.00 Bottom Packers & Anchor

Total Tool Length: 69.00



**TRILOBITE
TESTING, INC**

DRILL STEM TEST REPORT

FLUID SUMMARY

American Warrior Inc
PO Box 399
Garden City KS. 67846
ATTN: Kevin Timson

2-25s-31w Finney,KS
Clark #1-2
Job Ticket: 56162 **DST#: 1**
Test Start: 2014.03.13 @ 00:15:00

Mud and Cushion Information

Mud Type: Gel Chem	Cushion Type:	Oil API:	deg API
Mud Weight: 9.00 lb/gal	Cushion Length: ft	Water Salinity:	ppm
Viscosity: 56.00 sec/qt	Cushion Volume: bbl		
Water Loss: 6.39 in ³	Gas Cushion Type:		
Resistivity: 0.00 ohm.m	Gas Cushion Pressure: psig		
Salinity: 2500.00 ppm			
Filter Cake: 1.00 inches			

Recovery Information

Recovery Table

Length ft	Description	Volume bbl
63.00	H,O,C,G, 30% OIL 70% GAS	0.310
83.00	H,G,H,M,C,O, 20% GAS 30%MUD 50%OIL	0.408
126.00	S,O,C,G,M, 5% OIL 10% GAS 85% MUD	0.866
2.00	CLEAN OIL 100%	0.028
0.00	600' G.I.P.	0.000

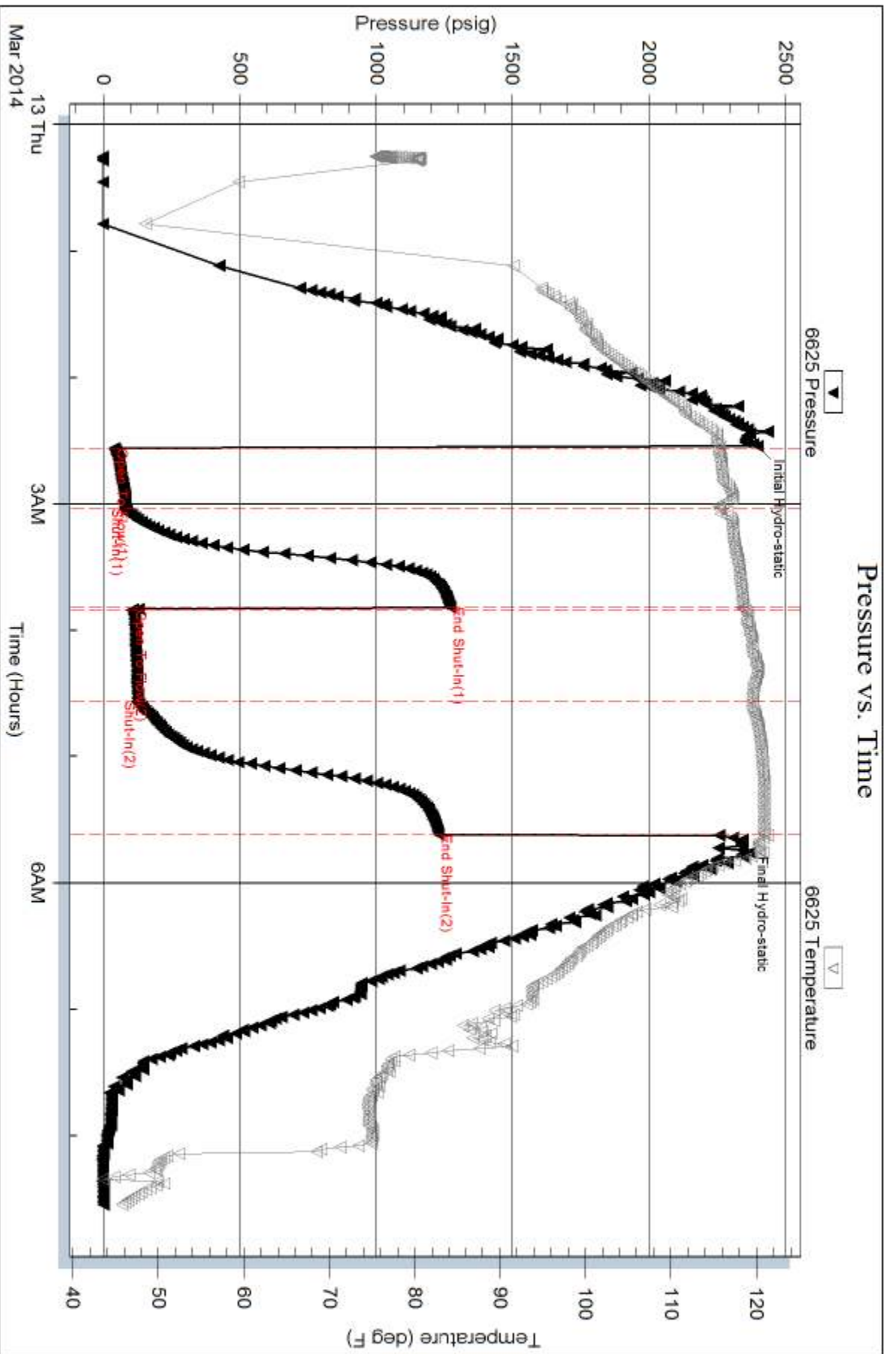
Total Length: 274.00 ft Total Volume: 1.612 bbl
 Num Fluid Samples: 0 Num Gas Bombs: 0 Serial #:
 Laboratory Name: Laboratory Location:
 Recovery Comments:

Serial #: 6625

Outside American Warrior Inc

Clark #1-2

DST Test Number: 1



Trilobe Testing, Inc

Ref. No: 56162

Printed: 2014.03.17 @ 09:51:48

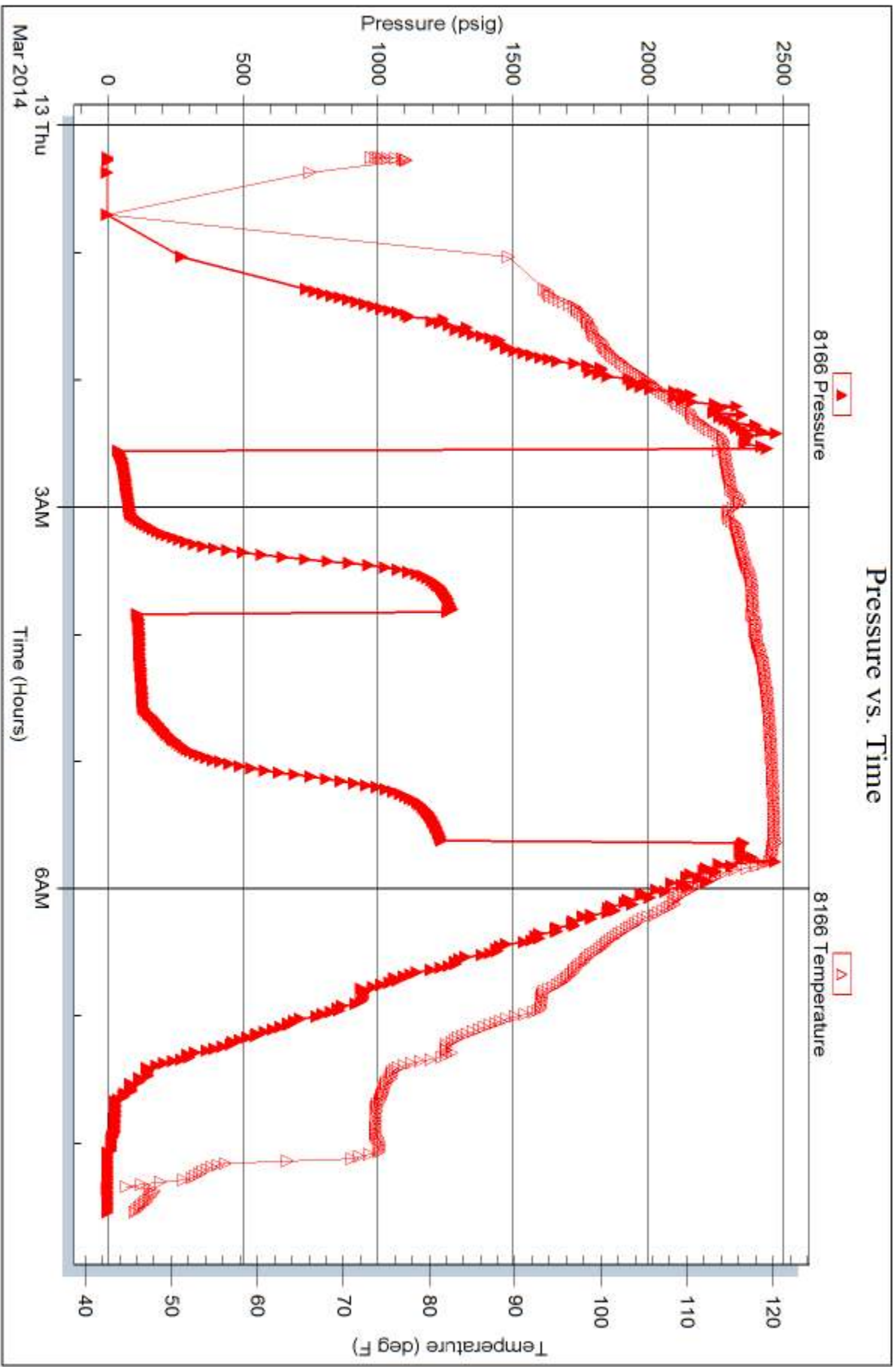
Serial #: 8166

Inside

American Warrior Inc

Clark #1-2

DST Test Number: 1



Triobite Testing, Inc

Ref. No: 56162

Printed: 2014.03.17 @ 09:51:48



TRILOBITE TESTING INC.

1515 Commerce Parkway • Hays, Kansas 67601

Test Ticket

NO. 56162

Well Name & No. Clark # 1-2 Test No. 1 Date 3-13-14
 Company American Warrior Inc. Elevation 2844 KB 2833 GL
 Address P.O. Box 399 Garden City KS. 67846
 Co. Rep / Geo. Kevin Timson / Rig Duke Rig #5
 Location: Sec. 2 Twp. 25 Rge. 31 Co. Finney State KS.

Interval Tested 4816 - 4865 Zone Tested Morrow
 Anchor Length 49' Drill Pipe Run 4565' Mud Wt. 9.3
 Top Packer Depth 4811 Drill Collars Run 295' Vis 56
 Bottom Packer Depth 4816 Wt. Pipe Run --- WL 6.4
 Total Depth 4865 Chlorides 2,500 ppm System LCM 3

Blow Description I.F. 30 1/2" INT. Blow Built to (B.O.B. in 19 min.)
I.S.I. 45" W.S.B.B. Started @ 17 min. Built to (1/2" in 45 min.)
F.F. 45-1/2" INT. Built to (B.O.B. in 2 min.)
F.S.I. 60" W.S.B.B. Started @ 8 min. Built to (3/4" in 60 min.)

Rec	Feet of	G.I.P.	(Cheno. 12)	%gas	%oil	%water	%mud
2	10	600		100			
126		S, O, C, G, M,		10	5		85
83		H, G, H, M, C, O		20	50		30
63		170 H, O, C, G,		70	30		

Rec Total 274 BHT 120 Gravity --- API RW --- @ --- °F Chlorides --- ppm

(A) Initial Hydrostatic 2,399 Test 1250 T-On Location 22:45:00
 (B) First Initial Flow 40 Jars 250 T-Started 00:15:00
 (C) First Final Flow 80 Safety Joint 75 T-Open 02:35:00
 (D) Initial Shut-In 1,273 Circ Sub T-Pulled 05:35:00
 (E) Second Initial Flow 108 Hourly Standby T-Out 08:30:00
 (F) Second Final Flow 126 Mileage 100rt 155
 (G) Final Shut-In 1,230 Sampler
 (H) Final Hydrostatic 2,339 Straddle
 Shale Packer
 Extra Packer
 Extra Recorder
 Day Standby
 Accessibility

Initial Open 30
 Initial Shut-In 45
 Final Flow 45
 Final Shut-In 60
 Sub Total 1730

"Thank-you"
 Ruined Shale Packer
 Ruined Packer
 Extra Copies
 Sub Total 0
 Total 1730
 MP/DST Disc't ---

Approved By _____ Our Representative Bob Hane
 Trilobite Testing Inc. shall not be liable for damaged of any kind of the property or personnel of the one for whom a test is made, or for any loss suffered or sustained, directly or indirectly, through the use of its equipment, or its statements or opinion concerning the results of any test, tools lost or damaged in the hole shall be paid for at cost by the party for whom the test is made.