



DRILL STEM TEST REPORT

Prepared For: **Cobalt Energy LLC**

PO Box 8037
Wichita KS 67208

ATTN: Corey Baker

Gillespie A #1-27X

27-11s-29w Gove,KS

Start Date: 2014.02.27 @ 01:55:00

End Date: 2014.02.27 @ 09:52:00

Job Ticket #: 56218 DST #: 1

Trilobite Testing, Inc
PO Box 362 Hays, KS 67601
ph: 785-625-4778 fax: 785-625-5620

Printed: 2014.03.04 @ 09:46:45



**TRILOBITE
TESTING, INC**

DRILL STEM TEST REPORT

Cobalt Energy LLC

27-11s-29w Gove,KS

PO Box 8037
Wichita KS 67208

Gillespie A #1-27X

Job Ticket: 56218

DST#: 1

ATTN: Corey Baker

Test Start: 2014.02.27 @ 01:55:00

GENERAL INFORMATION:

Formation: **KC "C-F"**

Deviated: No Whipstock: ft (KB)

Time Tool Opened: 04:02:15

Time Test Ended: 09:52:00

Test Type: Conventional Bottom Hole (Initial)

Tester: Brett Dickinson

Unit No: 59

Interval: 3970.00 ft (KB) To 4040.00 ft (KB) (TVD)

Reference Elevations: 2811.00 ft (KB)

Total Depth: 4040.00 ft (KB) (TVD)

2803.00 ft (CF)

Hole Diameter: 7.88 inches Hole Condition: Fair

KB to GR/CF: 8.00 ft

Serial #: 8736

Outside

Press@RunDepth: 167.63 psig @ 3973.00 ft (KB)

Capacity: 8000.00 psig

Start Date: 2014.02.27

End Date:

2014.02.27

Last Calib.:

2014.02.27

Start Time: 01:55:05

End Time:

09:51:59

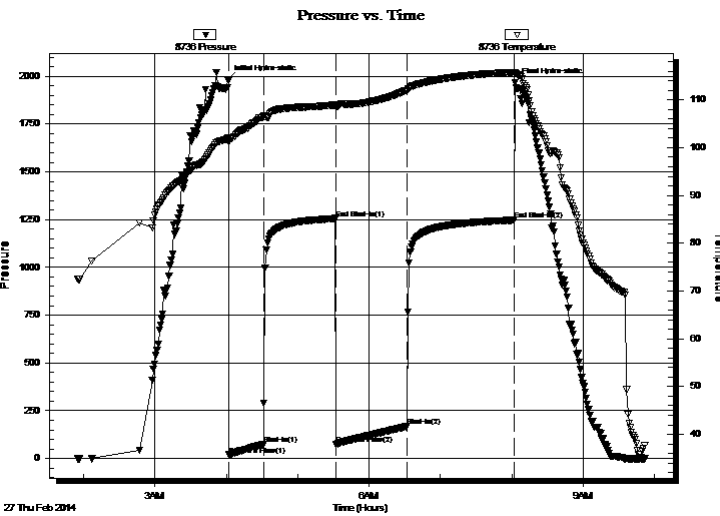
Time On Btm:

2014.02.27 @ 04:01:30

Time Off Btm:

2014.02.27 @ 08:02:45

TEST COMMENT: IF-9" blow
IS-No blow
FF-BOB in 39 min
FS-No blow



PRESSURE SUMMARY

Time (Min.)	Pressure (psig)	Temp (deg F)	Annotation
0	1983.03	102.04	Initial Hydro-static
1	19.38	101.09	Open To Flow (1)
30	74.46	106.44	Shut-In(1)
91	1255.76	108.94	End Shut-In(1)
91	75.06	108.48	Open To Flow (2)
151	167.63	111.99	Shut-In(2)
241	1247.28	115.68	End Shut-In(2)
242	1965.63	115.73	Final Hydro-static

Recovery

Length (ft)	Description	Volume (bbl)
135.00	MCW 20%M 80%W	1.89
185.00	VSWCM 5%W 95%M	2.60

Gas Rates

	Choke (inches)	Pressure (psig)	Gas Rate (Mcf/d)



**TRILOBITE
TESTING, INC**

DRILL STEM TEST REPORT

TOOL DIAGRAM

Cobalt Energy LLC

27-11s-29w Gove,KS

PO Box 8037
Wichita KS 67208

Gillespie A #1-27X

Job Ticket: 56218

DST#: 1

ATTN: Corey Baker

Test Start: 2014.02.27 @ 01:55:00

Tool Information

Drill Pipe:	Length: 3965.00 ft	Diameter: 3.80 inches	Volume: 55.62 bbl	Tool Weight:	2500.00 lb
Heavy Wt. Pipe:	Length: ft	Diameter: 2.70 inches	Volume: - bbl	Weight set on Packer:	25000.00 lb
Drill Collar:	Length: 0.00 ft	Diameter: 2.25 inches	Volume: 0.00 bbl	Weight to Pull Loose:	65000.00 lb
			<u>Total Volume:</u>	Tool Chased	0.00 ft
			- bbl	String Weight: Initial	60000.00 lb
Drill Pipe Above KB:	23.00 ft			Final	62000.00 lb
Depth to Top Packer:	3970.00 ft				
Depth to Bottom Packer:	ft				
Interval between Packers:	70.00 ft				
Tool Length:	98.00 ft				
Number of Packers:	2	Diameter:	6.75 inches		
Tool Comments:					

Tool Description

Tool Description	Length (ft)	Serial No.	Position	Depth (ft)	Accum. Lengths
Shut In Tool	5.00			3947.00	
Hydraulic tool	5.00			3952.00	
Jars	5.00			3957.00	
Safety Joint	3.00			3960.00	
Packer	5.00			3965.00	28.00 Bottom Of Top Packer
Packer	5.00			3970.00	
Stubb	1.00			3971.00	
Perforations	2.00			3973.00	
Recorder	0.00	8018	Inside	3973.00	
Recorder	0.00	8736	Outside	3973.00	
Change Over Sub	1.00			3974.00	
Drill Pipe	62.00			4036.00	
Change Over Sub	1.00			4037.00	
Bullnose	3.00			4040.00	70.00 Bottom Packers & Anchor

Total Tool Length: 98.00



**TRILOBITE
TESTING, INC**

DRILL STEM TEST REPORT

FLUID SUMMARY

Cobalt Energy LLC

27-11s-29w Gove,KS

PO Box 8037
Wichita KS 67208

Gillespie A #1-27X

Job Ticket: 56218

DST#: 1

ATTN: Corey Baker

Test Start: 2014.02.27 @ 01:55:00

Mud and Cushion Information

Mud Type: Gel Chem

Cushion Type:

Oil API:

deg API

Mud Weight: 9.00 lb/gal

Cushion Length:

ft

Water Salinity:

56000 ppm

Viscosity: 50.00 sec/qt

Cushion Volume:

bbbl

Water Loss: 6.78 in³

Gas Cushion Type:

Resistivity: ohm.m

Gas Cushion Pressure:

psig

Salinity: 1300.00 ppm

Filter Cake: inches

Recovery Information

Recovery Table

Length ft	Description	Volume bbl
135.00	MCW 20%M 80%W	1.894
185.00	VSWCM 5%W 95%M	2.595

Total Length: 320.00 ft

Total Volume: 4.489 bbl

Num Fluid Samples: 0

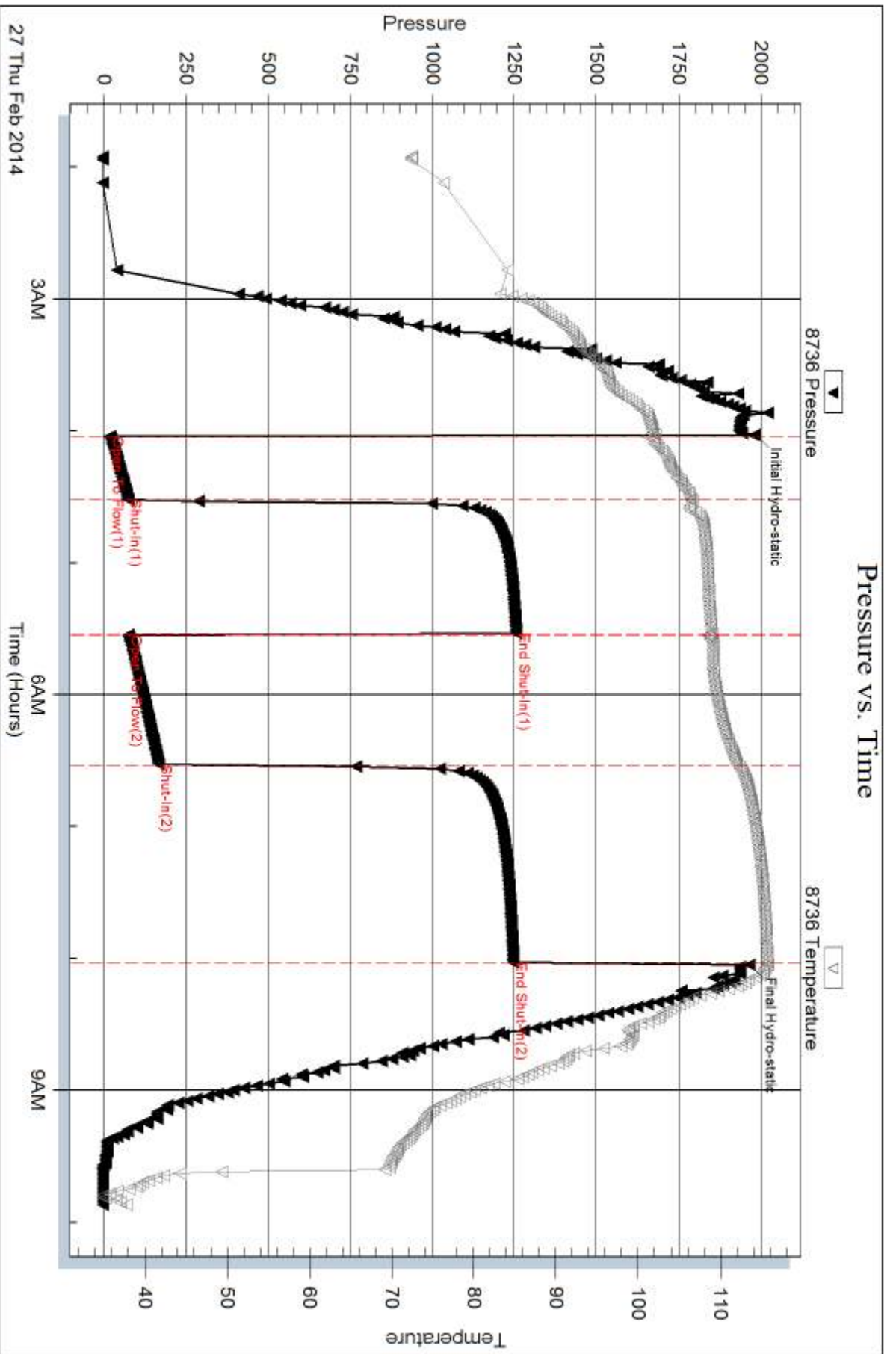
Num Gas Bombs: 0

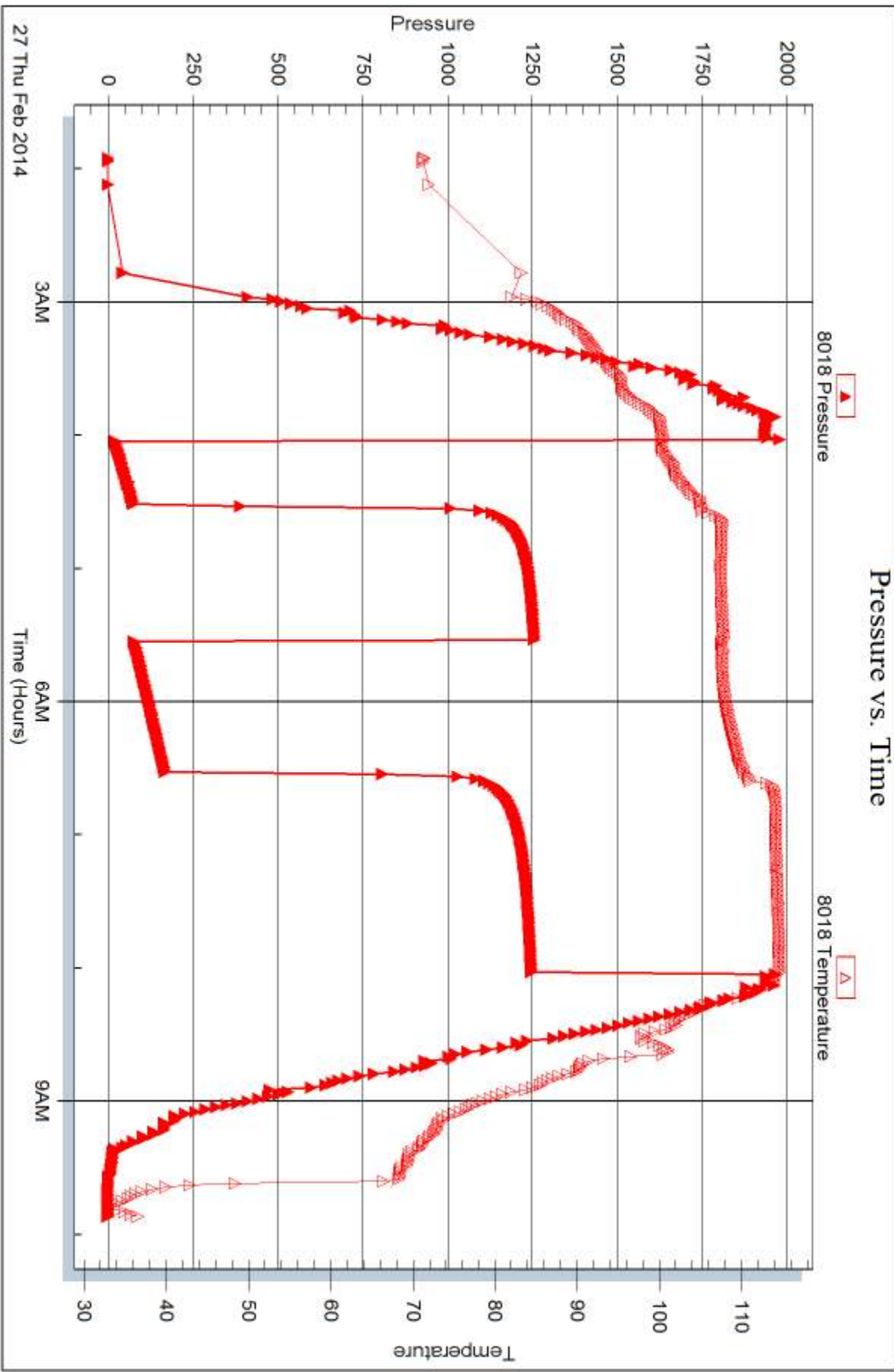
Serial #:

Laboratory Name:

Laboratory Location:

Recovery Comments:







DRILL STEM TEST REPORT

Prepared For: **Cobalt Energy LLC**

PO Box 8037
Wichita KS 67208

ATTN: Corey Baker

Gillespie A #1-27X

27-11s-29w Gove,KS

Start Date: 2014.02.28 @ 00:40:00

End Date: 2014.02.28 @ 08:45:15

Job Ticket #: 56219 DST #: 2

Trilobite Testing, Inc
PO Box 362 Hays, KS 67601
ph: 785-625-4778 fax: 785-625-5620

Printed: 2014.03.04 @ 09:46:09

Cobalt Energy LLC
27-11s-29w Gove,KS
Gillespie A #1-27X
DST # 2
KC"H-J"
2014.02.28



TRILOBITE TESTING, INC

DRILL STEM TEST REPORT

Cobalt Energy LLC

27-11s-29w Gove,KS

PO Box 8037
Wichita KS 67208

Gillespie A #1-27X

Job Ticket: 56219

DST#: 2

ATTN: Corey Baker

Test Start: 2014.02.28 @ 00:40:00

GENERAL INFORMATION:

Formation: **KC"H-J"**
 Deviated: No Whipstock: ft (KB)
 Time Tool Opened: 03:02:00
 Time Test Ended: 08:45:15
 Interval: **4082.00 ft (KB) To 4160.00 ft (KB) (TVD)**
 Total Depth: 4160.00 ft (KB) (TVD)
 Hole Diameter: 7.88 inches Hole Condition: Fair
 Test Type: Conventional Bottom Hole (Reset)
 Tester: Brett Dickinson
 Unit No: 59
 Reference Elevations: 2811.00 ft (KB)
 2803.00 ft (CF)
 KB to GR/CF: 8.00 ft

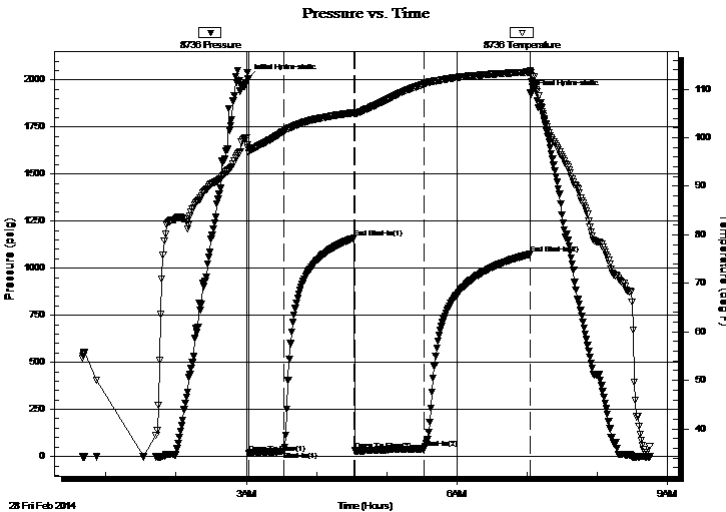
Serial #: 8736

Outside

Press@RunDepth: 41.47 psig @ 4085.00 ft (KB) Capacity: 8000.00 psig
 Start Date: 2014.02.28 End Date: 2014.02.28 Last Calib.: 2014.02.28
 Start Time: 00:40:05 End Time: 08:45:14 Time On Btm: 2014.02.28 @ 03:01:30
 Time Off Btm: 2014.02.28 @ 07:03:15

TEST COMMENT: IF-3" blow
 IS-No blow
 FF-1" blow
 FS-No blow

PRESSURE SUMMARY



Time (Min.)	Pressure (psig)	Temp (deg F)	Annotation
0	2008.65	97.95	Initial Hydro-static
1	17.85	96.85	Open To Flow (1)
31	26.67	101.30	Shut-In(1)
91	1159.85	105.15	End Shut-In(1)
92	30.95	104.95	Open To Flow (2)
151	41.47	111.06	Shut-In(2)
241	1074.84	113.55	End Shut-In(2)
242	1924.83	113.36	Final Hydro-static

Recovery

Length (ft)	Description	Volume (bbl)
50.00	MCW 30%M 70%W	0.70

* Recovery from multiple tests

Gas Rates

Choke (inches)	Pressure (psig)	Gas Rate (Mcf/d)



**TRILOBITE
TESTING, INC**

DRILL STEM TEST REPORT

TOOL DIAGRAM

Cobalt Energy LLC

27-11s-29w Gove,KS

PO Box 8037
Wichita KS 67208

Gillespie A #1-27X

Job Ticket: 56219

DST#: 2

ATTN: Corey Baker

Test Start: 2014.02.28 @ 00:40:00

Tool Information

Drill Pipe:	Length: 4060.00 ft	Diameter: 3.80 inches	Volume: 56.95 bbl	Tool Weight: 2500.00 lb
Heavy Wt. Pipe:	Length: ft	Diameter: 2.70 inches	Volume: - bbl	Weight set on Packer: 25000.00 lb
Drill Collar:	Length: 0.00 ft	Diameter: 2.25 inches	Volume: 0.00 bbl	Weight to Pull Loose: 61000.00 lb
			<u>Total Volume: - bbl</u>	Tool Chased 0.00 ft
Drill Pipe Above KB:	6.00 ft			String Weight: Initial 61000.00 lb
Depth to Top Packer:	4082.00 ft			Final 61000.00 lb
Depth to Bottom Packer:	ft			
Interval between Packers:	78.00 ft			
Tool Length:	106.00 ft			
Number of Packers:	2	Diameter: 6.75 inches		

Tool Comments:

Tool Description

Length (ft) Serial No. Position Depth (ft) Accum. Lengths

Tool Description	Length (ft)	Serial No.	Position	Depth (ft)	Accum. Lengths
Shut In Tool	5.00			4059.00	
Hydraulic tool	5.00			4064.00	
Jars	5.00			4069.00	
Safety Joint	3.00			4072.00	
Packer	5.00			4077.00	28.00 Bottom Of Top Packer
Packer	5.00			4082.00	
Stubb	1.00			4083.00	
Perforations	2.00			4085.00	
Recorder	0.00	8018	Inside	4085.00	
Recorder	0.00	8736	Outside	4085.00	
Change Over Sub	1.00			4086.00	
Drill Pipe	62.00			4148.00	
Change Over Sub	1.00			4149.00	
Perforations	8.00			4157.00	
Bullnose	3.00			4160.00	78.00 Bottom Packers & Anchor

Total Tool Length: 106.00



**TRILOBITE
TESTING, INC**

DRILL STEM TEST REPORT

FLUID SUMMARY

Cobalt Energy LLc

27-11s-29w Gove,KS

PO Box 8037
Wichita KS 67208

Gillespie A #1-27X

Job Ticket: 56219

DST#: 2

ATTN: Corey Baker

Test Start: 2014.02.28 @ 00:40:00

Mud and Cushion Information

Mud Type: Gel Chem

Cushion Type:

Oil API:

deg API

Mud Weight: 9.00 lb/gal

Cushion Length:

ft

Water Salinity:

60000 ppm

Viscosity: 50.00 sec/qt

Cushion Volume:

bbbl

Water Loss: 6.78 in³

Gas Cushion Type:

Resistivity: ohm.m

Gas Cushion Pressure:

psig

Salinity: 1300.00 ppm

Filter Cake: inches

Recovery Information

Recovery Table

Length ft	Description	Volume bbl
50.00	MCW 30%M 70%W	0.701

Total Length: 50.00 ft Total Volume: 0.701 bbl

Num Fluid Samples: 0

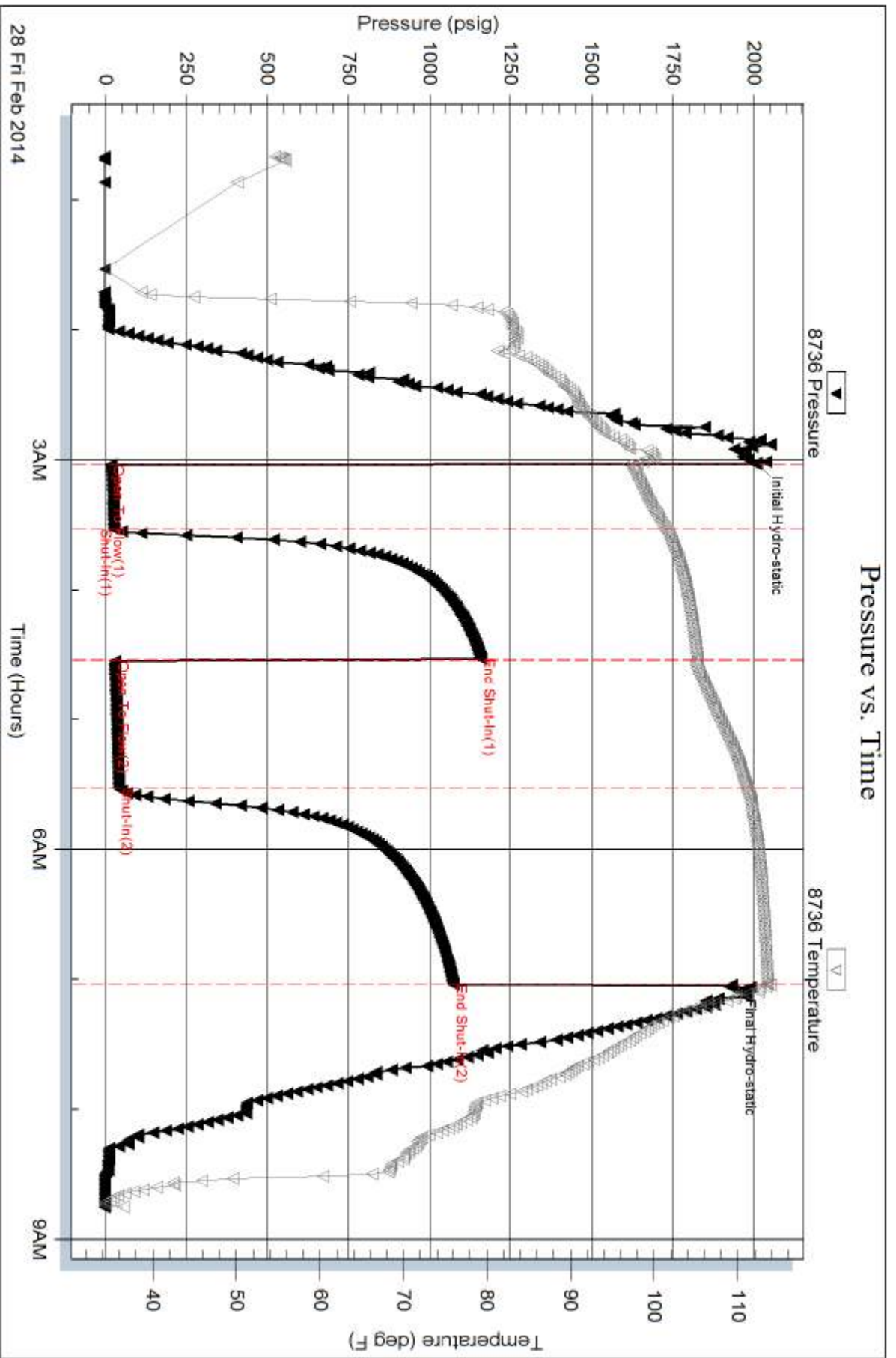
Num Gas Bombs: 0

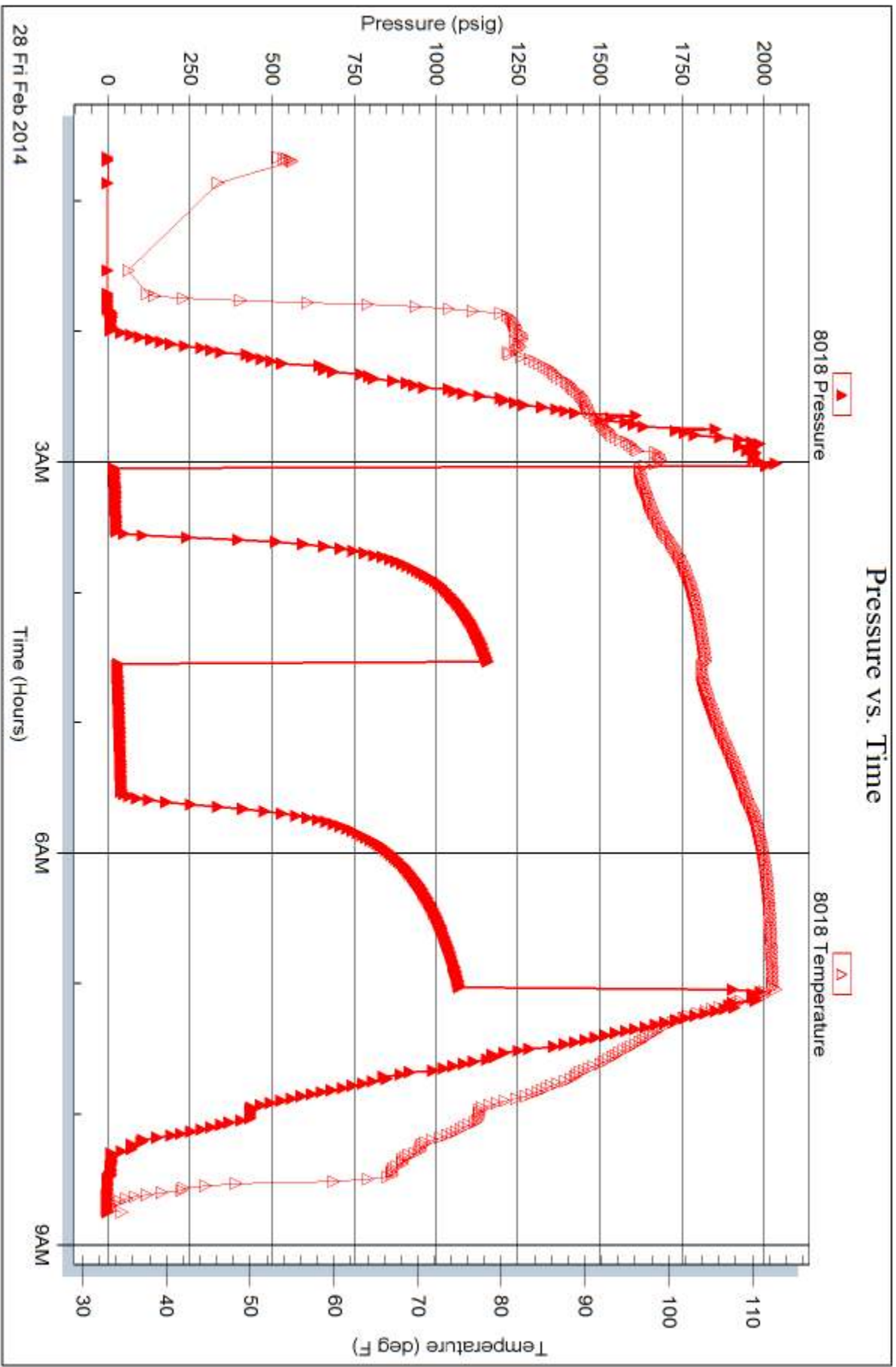
Serial #:

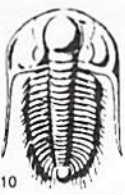
Laboratory Name:

Laboratory Location:

Recovery Comments:







TRILOBITE TESTING INC.

1515 Commerce Parkway • Hays, Kansas 67601

Test Ticket

NO. **56218**

4/10

Well Name & No. Gillespie Trust "A" #1-27x Test No. 7 Date _____
 Company Cobalt Energy LLC Elevation 2811 KB 2803 GL _____
 Address PO Box 8037 Wichita KS 67208
 Co. Rep / Geo. Cory Becker Rig Pickrell #10
 Location: Sec. 27 Twp. 11 Rge. 29 Co. Gove State KS

Interval Tested 3970-4040 Zone Tested KC "C-F"
 Anchor Length 70 Drill Pipe Run 3965 Mud Wt. 9.0
 Top Packer Depth 3965 Drill Collars Run _____ Vis 50
 Bottom Packer Depth 3970 Wt. Pipe Run _____ WL 6.8
 Total Depth 4040 Chlorides 1,300 ppm System LCM 1
 Blow Description 2F - 9 in Blow
ISL - No blow
FF - BOB in 39 min
FSF - No blow

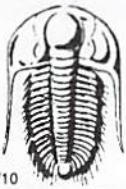
Rec	Feet of	%gas	%oil	%water	%mud
<u>185</u>	<u>vs wcm</u>		<u>5</u>	<u>95</u>	
<u>135</u>	<u>MCW</u>		<u>80</u>	<u>20</u>	
_____	_____				
_____	_____				
_____	_____				

Rec Total 320 BHT 116 Gravity _____ API RW 23 @ 40 ° F Chlorides 36,000 ppm

(A) Initial Hydrostatic <u>1,983</u>	<input checked="" type="checkbox"/> Test <u>1250</u>	T-On Location <u>1:00</u>
(B) First Initial Flow <u>19</u>	<input checked="" type="checkbox"/> Jars <u>250</u>	T-Started <u>1:55</u>
(C) First Final Flow <u>74</u>	<input checked="" type="checkbox"/> Safety Joint <u>75</u>	T-Open <u>4:00</u>
(D) Initial Shut-In <u>1,256</u>	<input type="checkbox"/> Circ Sub _____	T-Pulled <u>8:00</u>
(E) Second Initial Flow <u>75</u>	<input type="checkbox"/> Hourly Standby _____	T-Out <u>9:50</u>
(F) Second Final Flow <u>168</u>	<input checked="" type="checkbox"/> Mileage <u>143rt</u> <u>221.65</u>	Comments _____
(G) Final Shut-In <u>1,247</u>	<input type="checkbox"/> Sampler _____	_____
(H) Final Hydrostatic <u>4,966</u>	<input type="checkbox"/> Straddle _____	<input type="checkbox"/> Ruined Shale Packer _____
Initial Open <u>30</u>	<input type="checkbox"/> Shale Packer _____	<input type="checkbox"/> Ruined Packer _____
Initial Shut-In <u>80</u>	<input type="checkbox"/> Extra Packer _____	<input type="checkbox"/> Extra Copies _____
Final Flow <u>60</u>	<input type="checkbox"/> Extra Recorder _____	Sub Total <u>0</u>
Final Shut-In <u>90</u>	<input type="checkbox"/> Day Standby _____	Total <u>1796.65</u>
	<input type="checkbox"/> Accessibility _____	MP/DST Disc't _____
	Sub Total <u>1796.65</u>	

Approved By _____ Our Representative Burton

Trilobite Testing Inc. shall not be liable for damaged of any kind of the property or personnel of the one for whom a test is made, or for any loss suffered or sustained, directly or indirectly, through the use of its equipment, or its statements or opinion concerning the results of any test, tools lost or damaged in the hole shall be paid for at cost by the party for whom the test is made.



TRILOBITE TESTING INC.

1515 Commerce Parkway • Hays, Kansas 67601

Test Ticket

NO. 56219

Well Name & No. Gillespie trust "A" #1-27x Test No. 2 Date 2/28/14
 Company Cobalt Energy LLC Elevation 2811 KB 2803 GL
 Address PO Box 8037 Wichita KS 67208
 Co. Rep / Geo. Cory Becker Rig Pickwell #10
 Location: Sec. 27 Twp. 11 Rge. 29 Co. Gove State KS

Interval Tested 4082 - 4160 Zone Tested KC "H-J"
 Anchor Length 78 Drill Pipe Run 4060 Mud Wt. _____
 Top Packer Depth 4077 Drill Collars Run — Vis _____
 Bottom Packer Depth 4082 Wt. Pipe Run — WL _____
 Total Depth 4160 Chlorides _____ ppm System LCM _____

Blow Description IF - 3in blow
ISF - No blow
FF - 1in blow
FSF - No blow

Rec	Feet of	%gas	%oil	%water	%mud
<u>50</u>	<u>MCW</u>			<u>30</u>	<u>30</u>
Rec	Feet of	%gas	%oil	%water	%mud
Rec	Feet of	%gas	%oil	%water	%mud
Rec	Feet of	%gas	%oil	%water	%mud
Rec	Feet of	%gas	%oil	%water	%mud

Rec Total 50 BHT 114 Gravity _____ API RW 2 @ 45 ° F Chlorides 60,000 ppm

(A) Initial Hydrostatic 2,008
 (B) First Initial Flow 18
 (C) First Final Flow 27
 (D) Initial Shut-In 1,160
 (E) Second Initial Flow 31
 (F) Second Final Flow 41
 (G) Final Shut-In 1,075
 (H) Final Hydrostatic 1,925

Test 1250
 Jars 250
 Safety Joint 75
 Circ Sub _____
 Hourly Standby _____
 Mileage 143-RT 443.30
 Sampler _____
 Straddle _____
 Shale Packer _____
 Extra Packer _____
 Extra Recorder _____
 Day Standby 1d 6.75h
 Accessibility _____
 Sub Total 2018.30

T-On Location 00:15
 T-Started 00:40
 T-Open 3:00
 T-Pulled 7:00
 T-Out 8:45
 Comments loaded tools
3/1/14 at 15:30
 Ruined Shale Packer _____
 Ruined Packer _____
 Extra Copies _____
 Sub Total 800
 Total 2818.30
 MP/DST Disc't _____

Initial Open 30
 Initial Shut-In 60
 Final Flow 60
 Final Shut-In 90

Approved By _____ Our Representative Burt D...

Trilobite Testing Inc. shall not be liable for damaged of any kind of the property or personnel of the one for whom a test is made, or for any loss suffered or sustained, directly or indirectly, through the use of its equipment, or its statements or opinion concerning the results of any test, tools lost or damaged in the hole shall be paid for at cost by the party for whom the test is made.