



DRILL STEM TEST REPORT

Prepared For: **RJM Company**

Po Box 256 Claflin KS 67525+0256

ATTN: Clint

Gibber #1

16-17s-11w Barton

Start Date: 2014.02.26 @ 17:15:00

End Date: 2014.02.26 @ 22:58:00

Job Ticket #: 19140 DST #: 3

Superior Testers Enterprises LLC
PO Box 138 Great Bend KS 67530
1-800-792-6902

Printed: 2014.02.26 @ 23:21:06



DRILL STEM TEST REPORT

RJM Company
 Po Box 256 Claflin KS 67525+0256
 ATTN: Clint

16-17s-11w Barton
Gibber #1
 Job Ticket: 19140 **DST#: 3**
 Test Start: 2014.02.26 @ 17:15:00

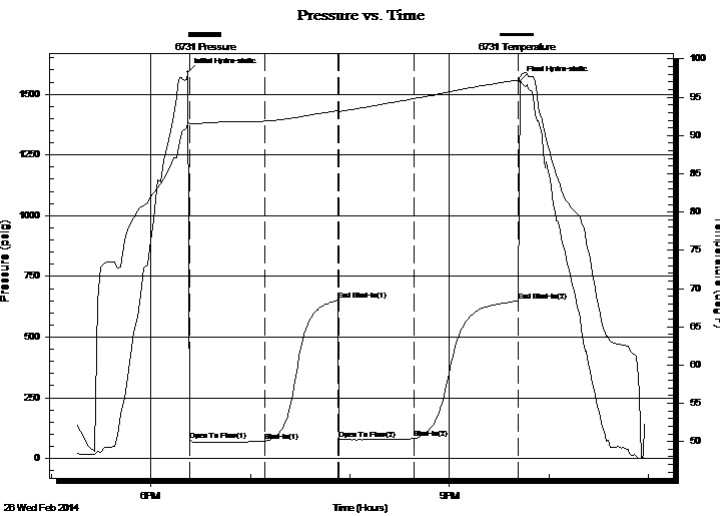
GENERAL INFORMATION:

Formation: **HI zones**
 Deviated: No Whipstock: ft (KB)
 Time Tool Opened: 18:23:30
 Time Test Ended: 22:58:00
 Interval: **3172.00 ft (KB) To 3240.00 ft (KB) (TVD)**
 Total Depth: 3240.00 ft (KB) (TVD)
 Hole Diameter: 7.88 inches Hole Condition: Fair
 Test Type: Conventional Bottom Hole (Initial)
 Tester: Jared Scheck
 Unit No: 3320-Great Bend-70
 Reference Elevations: 1827.00 ft (KB)
 1820.00 ft (CF)
 KB to GR/CF: 7.00 ft

Serial #: 6731

Press@RunDepth: 80.95 psig @ ft (KB) Capacity: 5000.00 psig
 Start Date: 2014.02.26 End Date: 2014.02.26 Last Calib.: 2014.02.26
 Start Time: 17:15:00 End Time: 22:58:00 Time On Btm: 2014.02.26 @ 18:22:30
 Time Off Btm: 2014.02.26 @ 21:42:30

TEST COMMENT: 1st opening 45 Minutes-Weak blow built 3 inches into water in 45 minutes
 1st Shut-in 45 Minutes-No blow back
 2nd Opening 45 Minutes-Weak blow built 4 inches into water in 45 minutes
 2nd Shut-in 60 Minutes-No blow back



PRESSURE SUMMARY

Time (Min.)	Pressure (psig)	Temp (deg F)	Annotation
0	1590.09	91.73	Initial Hydro-static
1	74.15	91.53	Open To Flow (1)
46	69.73	91.88	Shut-In(1)
90	650.65	93.25	End Shut-In(1)
91	77.49	93.14	Open To Flow (2)
136	80.95	94.81	Shut-In(2)
199	649.01	97.27	End Shut-In(2)
200	1555.80	97.75	Final Hydro-static

Recovery

Length (ft)	Description	Volume (bbl)
50.00	mud spot oil 99% mud 1% oil	0.70

Gas Rates

	Choke (inches)	Pressure (psig)	Gas Rate (Mcf/d)



DRILL STEM TEST REPORT

RJM Company
 Po Box 256 Claflin KS 67525+0256
 ATTN: Clint

16-17s-11w Barton
Gibber #1
 Job Ticket: 19140 **DST#: 3**
 Test Start: 2014.02.26 @ 17:15:00

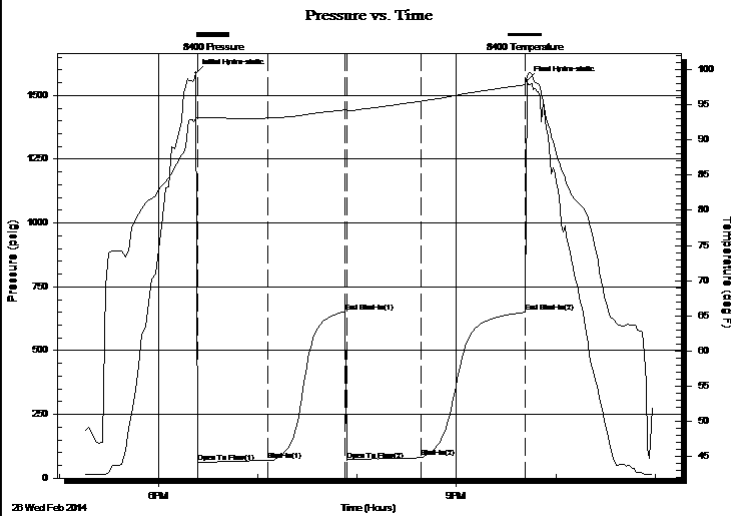
GENERAL INFORMATION:

Formation: **HI zones**
 Deviated: No Whipstock: ft (KB)
 Time Tool Opened: 18:23:30
 Time Test Ended: 22:58:00
 Interval: **3172.00 ft (KB) To 3240.00 ft (KB) (TVD)**
 Total Depth: 3240.00 ft (KB) (TVD)
 Hole Diameter: 7.88 inches Hole Condition: Fair
 Test Type: Conventional Bottom Hole (Initial)
 Tester: Jared Scheck
 Unit No: 3320-Great Bend-70
 Reference Elevations: 1827.00 ft (KB)
 1820.00 ft (CF)
 KB to GR/CF: 7.00 ft

Serial #: 8400

Press@RunDepth: 649.80 psig @ ft (KB) Capacity: 5000.00 psig
 Start Date: 2014.02.26 End Date: 2014.02.26 Last Calib.: 2014.02.26
 Start Time: 17:15:00 End Time: 22:58:30 Time On Btm: 2014.02.26 @ 18:22:30
 Time Off Btm: 2014.02.26 @ 21:42:30

TEST COMMENT: 1st opening 45 Minutes-Weak blow built 3 inches into water in 45 minutes
 1st Shut-in 45 Minutes-No blow back
 2nd Opening 45 Minutes-Weak blow built 4 inches into water in 45 minutes
 2nd Shut-in 60 Minutes-No blow back



PRESSURE SUMMARY

Time (Min.)	Pressure (psig)	Temp (deg F)	Annotation
0	1587.21	93.09	Initial Hydro-static
1	61.78	93.10	Open To Flow (1)
44	69.58	93.11	Shut-In(1)
90	652.45	94.31	End Shut-In(1)
91	70.69	94.13	Open To Flow (2)
136	79.89	95.51	Shut-In(2)
199	649.80	97.84	End Shut-In(2)
200	1558.40	98.97	Final Hydro-static

Recovery

Length (ft)	Description	Volume (bbl)
50.00	mud spot oil 99% mud 1% oil	0.70

Gas Rates

	Choke (inches)	Pressure (psig)	Gas Rate (Mcf/d)



DRILL STEM TEST REPORT

TOOL DIAGRAM

RJM Company
 Po Box 256 Claflin KS 67525+0256
 ATTN: Clint

16-17s-11w Barton
Gibber #1
 Job Ticket: 19140 **DST#: 3**
 Test Start: 2014.02.26 @ 17:15:00

Tool Information

Drill Pipe:	Length: 3162.00 ft	Diameter: 3.80 inches	Volume: 44.35 bbl	Tool Weight: 1000.00 lb
Heavy Wt. Pipe:	Length: 0.00 ft	Diameter: 0.00 inches	Volume: 0.00 bbl	Weight set on Packer: 20000.00 lb
Drill Collar:	Length: 0.00 ft	Diameter: 0.00 inches	Volume: 0.00 bbl	Weight to Pull Loose: 60000.00 lb
			<u>Total Volume: 44.35 bbl</u>	Tool Chased 0.00 ft
Drill Pipe Above KB:	10.00 ft			String Weight: Initial 47000.00 lb
Depth to Top Packer:	3172.00 ft			Final 47000.00 lb
Depth to Bottom Packer:	ft			
Interval between Packers:	68.00 ft			
Tool Length:	88.00 ft			
Number of Packers:	2	Diameter: 6.75 inches		

Tool Comments:

Tool Description	Length (ft)	Serial No.	Position	Depth (ft)	Accum. Lengths
------------------	-------------	------------	----------	------------	----------------

Shut In Tool	5.00			3157.00	
Hydraulic tool	5.00			3162.00	
Packer	5.00			3167.00	20.00 Bottom Of Top Packer
Packer	5.00			3172.00	
Recorder	1.00			3173.00	
Change Over Sub	0.50			3173.50	
Drill Pipe	32.00			3205.50	
Change Over Sub	0.50			3206.00	
Recorder	1.00			3207.00	
Anchor	30.00			3237.00	
Bullnose	3.00			3240.00	68.00 Bottom Packers & Anchor

Total Tool Length: 88.00



DRILL STEM TEST REPORT

FLUID SUMMARY

RJM Company
 Po Box 256 Claflin KS 67525+0256
 ATTN: Clint

16-17s-11w Barton
Gibber #1
 Job Ticket: 19140 **DST#: 3**
 Test Start: 2014.02.26 @ 17:15:00

Mud and Cushion Information

Mud Type: Gel Chem	Cushion Type:	Oil API:	deg API
Mud Weight: 9.00 lb/gal	Cushion Length: ft	Water Salinity:	ppm
Viscosity: 51.00 sec/qt	Cushion Volume: bbl		
Water Loss: 12.00 in ³	Gas Cushion Type:		
Resistivity: ohm.m	Gas Cushion Pressure: psig		
Salinity: 12000.00 ppm			
Filter Cake: 1.00 inches			

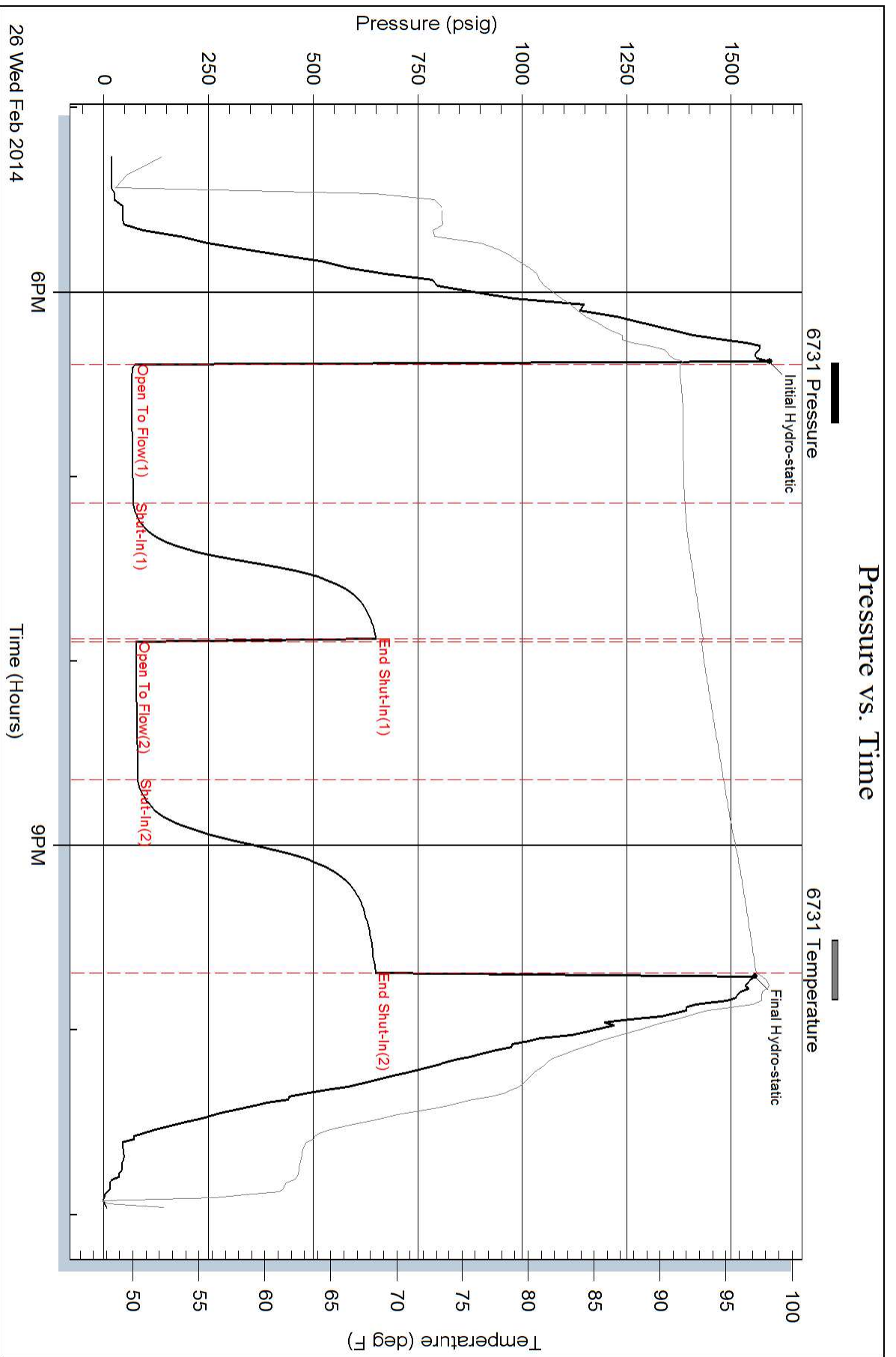
Recovery Information

Recovery Table

Length ft	Description	Volume bbl
50.00	mud spot oil 99% mud 1% oil	0.701

Total Length: 50.00 ft Total Volume: 0.701 bbl
 Num Fluid Samples: 0 Num Gas Bombs: 0 Serial #:
 Laboratory Name: Laboratory Location:
 Recovery Comments:

Pressure vs. Time



26 Wed Feb 2014

6PM

9PM

