



DRILL STEM TEST REPORT

Prepared For: **Castelli Exploration, Inc.**

6908 NW 112th
Oklahoma City OK, 73162-2976

ATTN: Rick Pope

Dunn #1-25 SWD

25/33s/17w/Comanche

Start Date: 2014.02.19 @ 20:00:00

End Date: 2014.02.20 @ 07:42:00

Job Ticket #: 19202 DST #: 1

Superior Testers Enterprises LLC
PO Box 138 Great Bend KS 67530
1-800-792-6902

Printed: 2014.02.20 @ 08:57:23



DRILL STEM TEST REPORT

Castelli Exploration, Inc.
 6908 NW 112th
 Oklahoma City OK, 73162-2976
 ATTN: Rick Pope

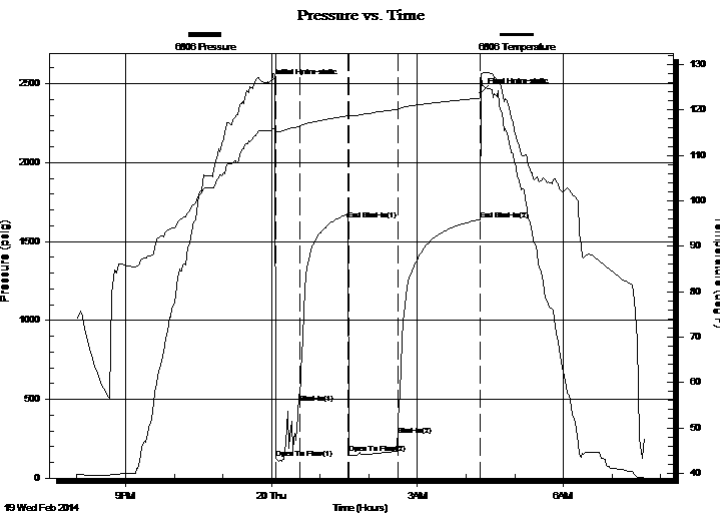
25/33s/17w/Comanche
Dunn #1-25 SWD
 Job Ticket: 19202 **DST#: 1**
 Test Start: 2014.02.19 @ 20:00:00

GENERAL INFORMATION:

Formation: **Mississippian**
 Deviated: No Whipstock: ft (KB)
 Test Type: Conventional Bottom Hole (Initial)
 Time Tool Opened: 00:05:30 Tester: Shane Konzem
 Time Test Ended: 07:42:00 Unit No: 3330/234/Great Bend
 Interval: **5055.00 ft (KB) To 5102.00 ft (KB) (TVD)** Reference Elevations: 1850.00 ft (KB)
 Total Depth: 5102.00 ft (KB) (TVD) 1836.00 ft (CF)
 Hole Diameter: 9.75 inches Hole Condition: Poor KB to GR/CF: 14.00 ft

Serial #: 6806 Inside
 Press@RunDepth: 274.97 psig @ 5098.00 ft (KB) Capacity: 5000.00 psig
 Start Date: 2014.02.19 End Date: 2014.02.20 Last Calib.: 2014.02.20
 Start Time: 20:00:00 End Time: 07:42:00 Time On Btm: 2014.02.19 @ 23:56:00
 Time Off Btm: 2014.02.20 @ 04:18:00

TEST COMMENT: 1st Open/ 30 Minutes. Good blow built to bottom of 5 gallon bucket in 1 minute and 30 seconds.
 1st Shut In/ 60 Minutes. Blow back built to 3 inches into water.
 2nd Open/ 60 Minutes. Strong blow built to bottom of 5 gallon bucket in 45 seconds. Gas to surface in 15 minutes.



PRESSURE SUMMARY

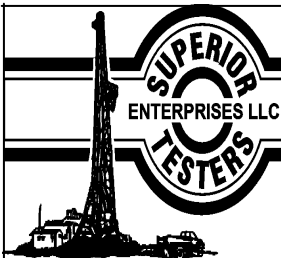
Time (Min.)	Pressure (psig)	Temp (deg F)	Annotation
0	2502.97	115.51	Initial Hydro-static
10	122.77	115.32	Open To Flow (1)
39	475.60	116.42	Shut-In(1)
98	1635.68	118.71	End Shut-In(1)
99	155.79	118.54	Open To Flow (2)
160	274.97	120.19	Shut-In(2)
261	1640.08	122.60	End Shut-In(2)
262	2443.85	126.33	Final Hydro-static

Recovery

Length (ft)	Description	Volume (bbl)
221.00	20% gas, 20% Oil, 20% Mud, 40% Water	3.10
94.00	5% Oil, 5% water, 90% Mud	1.32
0.00	Chloride recov. 27000 ppm	0.00
0.00	Resist recov was .22 ohms at 40 degree	0.00

Gas Rates

Choke (inches)	Pressure (psig)	Gas Rate (Mcf/d)



DRILL STEM TEST REPORT

Castelli Exploration, Inc.

25/33s/17w/Comanche

6908 NW 112th
Oaklahoma City OK, 73162-2976

Dunn #1-25 SWD

Job Ticket: 19202 **DST#: 1**

ATTN: Rick Pope

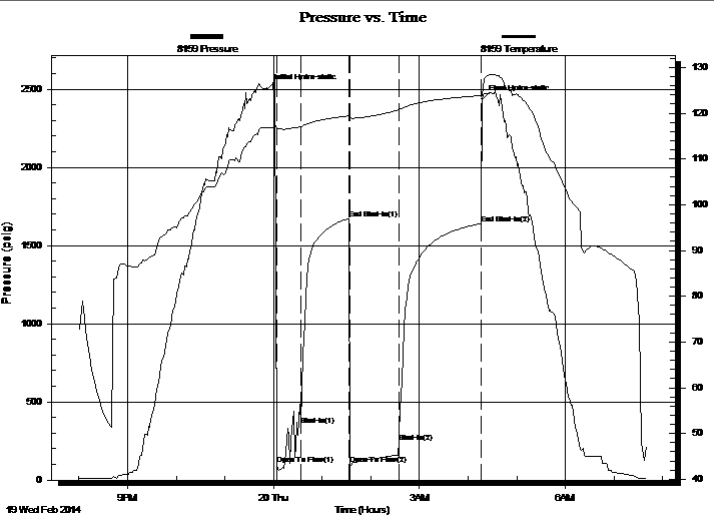
Test Start: 2014.02.19 @ 20:00:00

GENERAL INFORMATION:

Formation: **Mississippian**
 Deviated: No Whipstock: ft (KB)
 Time Tool Opened: 00:05:30
 Time Test Ended: 07:42:00
 Test Type: Conventional Bottom Hole (Initial)
 Tester: Shane Konzem
 Unit No: 3330/234/Great Bend
 Interval: **5055.00 ft (KB) To 5102.00 ft (KB) (TVD)**
 Total Depth: 5102.00 ft (KB) (TVD)
 Reference Elevations: 1850.00 ft (KB)
 1836.00 ft (CF)
 Hole Diameter: 9.75 inches Hole Condition: Poor
 KB to GR/CF: 14.00 ft

Serial #: 8159 Outside
 Press@RunDepth: 1641.73 psig @ 5099.00 ft (KB) Capacity: 5000.00 psig
 Start Date: 2014.02.19 End Date: 2014.02.20 Last Calib.: 2014.02.20
 Start Time: 20:00:00 End Time: 07:41:00 Time On Btm: 2014.02.19 @ 23:53:00
 Time Off Btm: 2014.02.20 @ 04:17:30

TEST COMMENT: 1st Open/ 30 Minutes. Good blow built to bottom of 5 gallon bucket in 1 minute and 30 seconds.
 1st Shut In/ 60 Minutes. Blow back built to 3 inches into water.
 2nd Open/ 60 Minutes. Strong blow built to bottom of 5 gallon bucket in 45 seconds. Gas to surface in 15 minutes.



PRESSURE SUMMARY

Time (Min.)	Pressure (psig)	Temp (deg F)	Annotation
0	2500.87	116.83	Initial Hydro-static
11	102.32	116.83	Open To Flow (1)
41	353.56	117.01	Shut-In(1)
101	1670.00	119.43	End Shut-In(1)
102	102.49	118.95	Open To Flow (2)
162	245.36	120.74	Shut-In(2)
264	1641.73	123.85	End Shut-In(2)
265	2436.18	123.88	Final Hydro-static

Recovery

Length (ft)	Description	Volume (bbl)
221.00	20% gas, 20% Oil, 20% Mud, 40% Water	3.10
94.00	5% Oil, 5% water, 90% Mud	1.32
0.00	Chloride recov. 27000 ppm	0.00
0.00	Resist recov was .22 ohms at 40 degree	0.00

Gas Rates

Choke (inches)	Pressure (psig)	Gas Rate (Mcf/d)



DRILL STEM TEST REPORT

TOOL DIAGRAM

Castelli Exploration, Inc.

25/33s/17w/Comanche

6908 NW 112th
Oaklahoma City OK, 73162-2976

Dunn #1-25 SWD

Job Ticket: 19202

DST#: 1

ATTN: Rick Pope

Test Start: 2014.02.19 @ 20:00:00

Tool Information

Drill Pipe:	Length: 5047.00 ft	Diameter: 3.80 inches	Volume: 70.80 bbl	Tool Weight: 2000.00 lb
Heavy Wt. Pipe:	Length: 0.00 ft	Diameter: 0.00 inches	Volume: 0.00 bbl	Weight set on Packer: 20000.00 lb
Drill Collar:	Length: 0.00 ft	Diameter: 0.00 inches	Volume: 0.00 bbl	Weight to Pull Loose: 80000.00 lb
			<u>Total Volume: 70.80 bbl</u>	Tool Chased 0.00 ft
Drill Pipe Above KB:	20.00 ft			String Weight: Initial 72000.00 lb
Depth to Top Packer:	5055.00 ft			Final 76000.00 lb
Depth to Bottom Packer:	ft			
Interval between Packers:	47.00 ft			
Tool Length:	75.00 ft			
Number of Packers:	2	Diameter: 8.75 inches		

Tool Comments:

Tool Description	Length (ft)	Serial No.	Position	Depth (ft)	Accum. Lengths
------------------	-------------	------------	----------	------------	----------------

Shut-In Tool	5.00			5032.00	
Hydraulic tool	5.00			5037.00	
Jars	6.00			5043.00	
Safety Joint	2.00			5045.00	
Top Packer	5.00			5050.00	
Packer	5.00			5055.00	28.00 Bottom Of Top Packer
Anchor	42.00			5097.00	
Recorder	1.00	6806	Inside	5098.00	
Recorder	1.00	8159	Outside	5099.00	
Bull Plug	3.00			5102.00	47.00 Anchor Tool
Total Tool Length:	75.00				



DRILL STEM TEST REPORT

FLUID SUMMARY

Castelli Exploration, Inc.

25/33s/17w/Comanche

6908 NW 112th
Oaklahoma City OK, 73162-2976

Dunn #1-25 SWD

Job Ticket: 19202

DST#: 1

ATTN: Rick Pope

Test Start: 2014.02.19 @ 20:00:00

Mud and Cushion Information

Mud Type: Gel Chem
Mud Weight: 9.00 lb/gal
Viscosity: 50.00 sec/qt
Water Loss: 10.00 in³
Resistivity: ohm.m
Salinity: 5500.00 ppm
Filter Cake: 1.00 inches

Cushion Type:
Cushion Length: ft
Cushion Volume: bbl
Gas Cushion Type:
Gas Cushion Pressure: psig

Oil API: deg API
Water Salinity: ppm

Recovery Information

Recovery Table

Length ft	Description	Volume bbl
221.00	20% gas, 20% Oil, 20% Mud, 40% Water	3.100
94.00	5% Oil, 5% water, 90% Mud	1.319
0.00	Chloride recov. 27000 ppm	0.000
0.00	Resist recov was .22 ohms at 40 degrees.	0.000

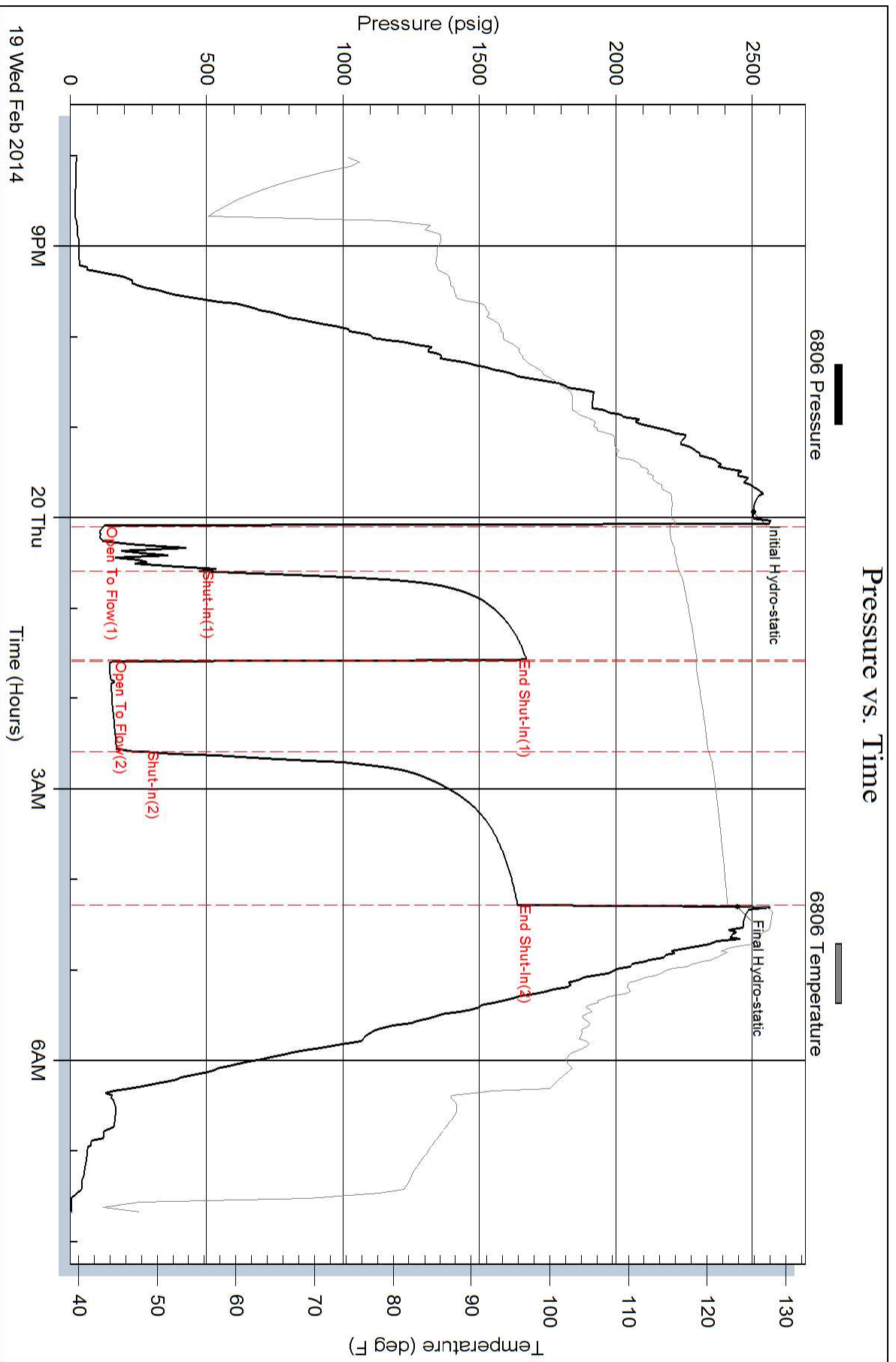
Total Length: 315.00 ft Total Volume: 4.419 bbl

Num Fluid Samples: 0 Num Gas Bombs: 0 Serial #:

Laboratory Name: Laboratory Location:

Recovery Comments: Gas measured .578 mcf/day at highest point. To small to log on program.

Pressure vs. Time



Pressure vs. Time

