



**TRILOBITE TESTING, INC**

# DRILL STEM TEST REPORT

Vincent Oil Corp.  
 155 N. Market Ste. 700  
 Wichita, KS 67202-1821  
 ATTN: Ken LeBlanc

**8-29s-22w Ford Co. KS**

**Feikert Farms 3-8**

Job Ticket: 51860      **DST#: 1**  
 Test Start: 2013.12.11 @ 23:17:26

## GENERAL INFORMATION:

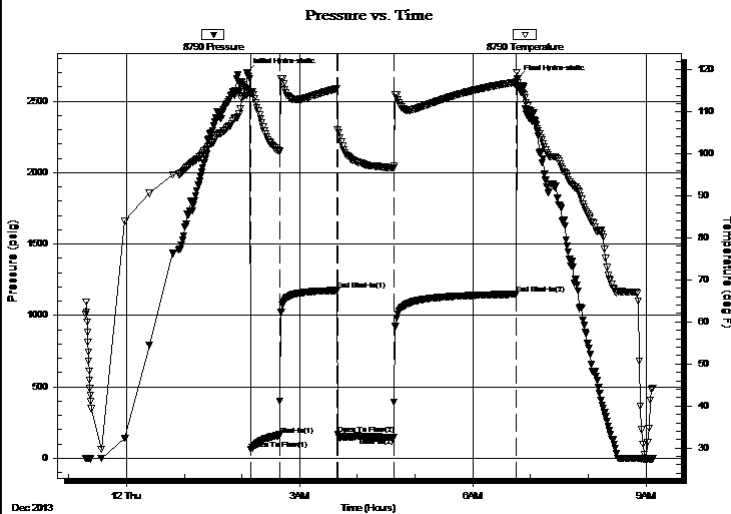
Formation: **Mississippi**  
 Deviated: No Whipstock: 0.00 ft (KB)  
 Time Tool Opened: 02:09:14  
 Time Test Ended: 09:06:58  
 Interval: **5284.00 ft (KB) To 5300.00 ft (KB) (TVD)**  
 Total Depth: 5300.00 ft (KB) (TVD)  
 Hole Diameter: 7.88 inches Hole Condition: Fair  
 Test Type: Conventional Bottom Hole (Initial)  
 Tester: Ryan Reynolds  
 Unit No: 48  
 Reference Elevations: 2529.00 ft (KB)  
 2519.00 ft (CF)  
 KB to GR/CF: 10.00 ft

## Serial #: 8790

Inside

Press@RunDepth: 145.55 psig @ 5285.00 ft (KB)      Capacity: 8000.00 psig  
 Start Date: 2013.12.11      End Date: 2013.12.12      Last Calib.: 2013.12.12  
 Start Time: 23:17:31      End Time: 09:06:59      Time On Btm: 2013.12.12 @ 02:05:29  
 Time Off Btm: 2013.12.12 @ 06:46:29

TEST COMMENT: IF: Strong blow . BOB immed. GTS @ 6min.  
 IS: Weak surf. blow  
 FF: Strong blow . BOB immed. Guaged gas  
 FS: No blow



## PRESSURE SUMMARY

| Time (Min.) | Pressure (psig) | Temp (deg F) | Annotation           |
|-------------|-----------------|--------------|----------------------|
| 0           | 2701.37         | 114.41       | Initial Hydro-static |
| 4           | 62.20           | 114.50       | Open To Flow (1)     |
| 34          | 165.03          | 100.59       | Shut-In(1)           |
| 93          | 1175.76         | 115.54       | End Shut-In(1)       |
| 94          | 168.89          | 105.73       | Open To Flow (2)     |
| 153         | 145.55          | 96.69        | Shut-In(2)           |
| 280         | 1149.61         | 117.09       | End Shut-In(2)       |
| 281         | 2654.56         | 116.96       | Final Hydro-static   |

## Recovery

| Length (ft) | Description       | Volume (bbl) |
|-------------|-------------------|--------------|
| 30.00       | drlg mud 100% mud | 0.42         |
|             |                   |              |
|             |                   |              |
|             |                   |              |
|             |                   |              |

## Gas Rates

|                | Choke (inches) | Pressure (psig) | Gas Rate (Mcf/d) |
|----------------|----------------|-----------------|------------------|
| First Gas Rate | 0.50           | 39.00           | 360.22           |
| Last Gas Rate  | 0.75           | 29.00           | 677.90           |
| Max. Gas Rate  | 0.50           | 70.00           | 569.34           |



**TRILOBITE  
TESTING, INC**

# DRILL STEM TEST REPORT

**FLUID SUMMARY**

Vincent Oil Corp.

**8-29s-22w Ford Co. KS**

155 N. Market Ste. 700  
Wichita, KS 67202-1821

**Feikert Farms 3-8**

Job Ticket: 51860

**DST#: 1**

ATTN: Ken LeBlanc

Test Start: 2013.12.11 @ 23:17:26

## Mud and Cushion Information

Mud Type: Gel Chem

Cushion Type:

Oil API:

deg API

Mud Weight: 10.00 lb/gal

Cushion Length:

ft

Water Salinity:

8400 ppm

Viscosity: 50.00 sec/qt

Cushion Volume:

bbbl

Water Loss: 9.59 in<sup>3</sup>

Gas Cushion Type:

Resistivity: ohm.m

Gas Cushion Pressure:

psig

Salinity: 8200.00 ppm

Filter Cake: 0.02 inches

## Recovery Information

Recovery Table

| Length<br>ft | Description      | Volume<br>bbl |
|--------------|------------------|---------------|
| 30.00        | drlg mud 100%mud | 0.421         |

Total Length: 30.00 ft

Total Volume: 0.421 bbl

Num Fluid Samples: 1

Num Gas Bombs: 1

Serial #: RR-1

Laboratory Name: Caraway

Laboratory Location: Liberal, KS

Recovery Comments:



**TRILOBITE  
TESTING, INC.**

## DRILL STEM TEST REPORT

**GAS RATES**

Vincent Oil Corp.

**8-29s-22w Ford Co. KS**

155 N. Market Ste. 700  
Wichita, KS 67202-1821

**Feikert Farms 3-8**

Job Ticket: 51860

**DST#: 1**

ATTN: Ken LeBlanc

Test Start: 2013.12.11 @ 23:17:26

### Gas Rates Information

Temperature: 59 (deg F)  
Relative Density: 0.65  
Z Factor: 0.8

Gas Rates Table

| Flow Period | Elapsed Time | Choke (inches) | Pressure (psig) | Gas Rate (Mcf/d) |
|-------------|--------------|----------------|-----------------|------------------|
| 1           | 10           | 0.50           | 39.00           | 360.22           |
| 1           | 20           | 0.50           | 55.00           | 468.15           |
| 1           | 30           | 0.50           | 70.00           | 569.34           |
| 2           | 10           | 0.75           | 29.00           | 677.90           |
| 2           | 20           | 0.75           | 30.00           | 693.52           |
| 2           | 30           | 0.75           | 30.00           | 693.52           |
| 2           | 40           | 0.75           | 29.00           | 677.90           |
| 2           | 50           | 0.75           | 29.00           | 677.90           |
| 2           | 60           | 0.75           | 29.00           | 677.90           |

Serial #: 8790

Inside

Vincent Oil Corp.

Felkert Farms 3-8

DST Test Number: 1

### Pressure vs. Time

