

## DRILL STEM TEST REPORT

Prepared For: **Carrie Exploration**

210 West 22nd Hays Kansas  
67601

ATTN: Steve Reed

### **Cemetery C-2**

### **28-19s-10w-Rice**

Start Date: 2014.03.21 @ 02:41:00

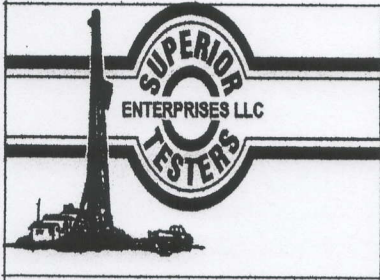
End Date: 2014.03.21 @ 08:33:00

Job Ticket #: 18305                      DST #: 2

Superior Testers Enterprises LLC  
PO Box 138 Great Bend KS 67530  
1-800-792-6902

Printed: 2014.03.21 @ 21:53:08

Carrie Exploration    28-19s-10w-Rice    Cemetery C-2    DST # 2    Arbuckle    2014.03.21



# DRILL STEM TEST REPORT

Carrie Exploration  
 210 West 22nd Hays Kansas  
 67601  
 ATTN: Steve Reed

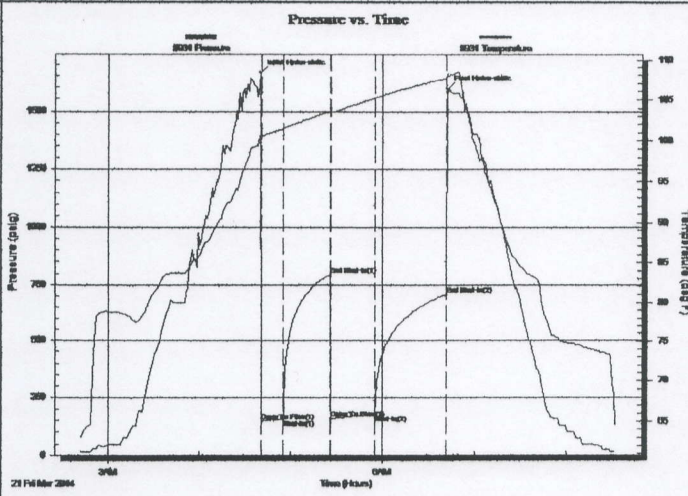
**28-19s-10w-Rice**  
**Cemetery C-2**  
 Job Ticket: 18305      DST#: 2  
 Test Start: 2014.03.21 @ 02:41:00

## GENERAL INFORMATION:

Formation: **Arbuckle**  
 Deviated: No      Whipstock:      ft (KB)  
 Time Tool Opened: 04:40:30  
 Time Test Ended: 08:33:00  
 Test Type: Conventional Bottom Hole (Initial)  
 Tester: Dustin Ellis  
 Unit No: 3315-Great Bend-46  
 Interval: **3235.00 ft (KB) To 3295.00 ft (KB) (TVD)**  
 Total Depth: 3295.00 ft (KB) (TVD)  
 Hole Diameter: 7.88 inches      Hole Condition: Fair  
 Reference Elevations: 1775.00 ft (KB)  
 1768.00 ft (CF)  
 KB to GR/CF: 7.00 ft

**Serial #: 8931      Inside**  
 Press@RunDepth: 177.84 psig @ 3290.14 ft (KB)      Capacity: 5000.00 psig  
 Start Date: 2014.03.21      End Date: 2014.03.21      Last Calib.: 2014.03.21  
 Start Time: 02:41:00      End Time: 08:33:00      Time On Btm: 2014.03.21 @ 04:40:00  
 Time Off Btm: 2014.03.21 @ 06:42:00

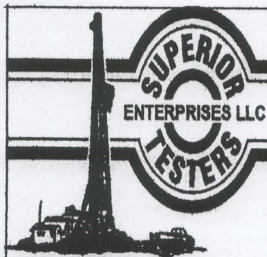
**TEST COMMENT:** 1st Open 15 minutes Strong building blow built to the bottom of a 5 gallon bucket of water in 2 minutes.  
 1st Shut in 30 minutes Yes blow back  
 2nd Open 30 minutes Good building blow built to the bottom of a 5 gallon bucket of water in 17 minutes.  
 2nd Shut in 45 minutes Yes blow back



PRESSURE SUMMARY			
Time (Min.)	Pressure (psig)	Temp (deg F)	Annotation
0	1664.59	100.78	Initial Hydro-static
1	146.72	100.45	Open To Flow (1)
15	155.85	101.49	Shut-In(1)
46	794.50	103.58	End Shut-In(1)
47	161.26	103.43	Open To Flow (2)
75	177.84	105.18	Shut-In(2)
122	707.31	107.64	End Shut-In(2)
122	1594.44	108.13	Final Hydro-static

Recovery		
Length (ft)	Description	Volume (bbl)
183.00	Gassy mud cut oil	1.27
0.00	Gas 60% Oil 15% Mud 25%	0.00
107.00	Gassy mud cut oil	1.50
0.00	Gas 75% Oil 5% Mud 20%	0.00
0.00	244 Gas in pipe	0.00

Gas Rates			
	Choke (inches)	Pressure (psig)	Gas Rate (Mcf/d)



# DRILL STEM TEST REPORT

TOOL DIAGRAM

Carrie Exploration

28-19s-10w-Rice

210 West 22nd Hays Kansas  
67601

Cemetery C-2

Job Ticket: 18305

DST#: 2

ATTN: Steve Reed

Test Start: 2014.03.21 @ 02:41:00

## Tool Information

Drill Pipe:	Length: 3085.00 ft	Diameter: 3.80 inches	Volume: 43.27 bbl	Tool Weight: 2000.00 lb
Heavy Wt. Pipe:	Length: 0.00 ft	Diameter: 0.00 inches	Volume: 0.00 bbl	Weight set on Packer: 20000.00 lb
Drill Collar:	Length: 142.66 ft	Diameter: 2.25 inches	Volume: 0.70 bbl	Weight to Pull Loose: 55000.00 lb
			Total Volume: 43.97 bbl	Tool Chased 0.00 ft
Drill Pipe Above KB:	20.66 ft			String Weight: Initial 51000.00 lb
Depth to Top Packer:	3235.00 ft			Final 52000.00 lb
Depth to Bottom Packer:	ft			
Interval between Packers:	60.14 ft			
Tool Length:	88.14 ft			
Number of Packers:	2	Diameter: 6.75 inches		

Tool Comments:

Tool Description	Length (ft)	Serial No.	Position	Depth (ft)	Accum. Lengths
Shut In Tool	5.00			3212.00	
Hydraulic tool	5.00			3217.00	
Jars	6.00			3223.00	
Safety Joint	2.00			3225.00	
Top Packer	5.00			3230.00	
Packer	5.00			3235.00	28.00 Bottom Of Top Packer
Anchor	7.00			3242.00	
Change Over Sub	0.75			3242.75	
Drill Pipe	31.64			3274.39	
Change Over Sub	0.75			3275.14	
Anchor	15.00			3290.14	
Recorder	0.00	8931	Inside	3290.14	
Recorder	0.00	8525	Outside	3290.14	
Bull Plug	5.00			3295.14	60.14 Anchor Tool

**Total Tool Length: 88.14**



# DRILL STEM TEST REPORT

FLUID SUMMARY

Carrie Exploration

28-19s-10w-Rice

210 West 22nd Hays Kansas  
67601

Cemetery C-2

Job Ticket: 18305

DST#: 2

ATTN: Steve Reed

Test Start: 2014.03.21 @ 02:41:00

## Mud and Cushion Information

Mud Type: Gel Chem

Cushion Type:

Oil API:

deg API

Mud Weight: 9.00 lb/gal

Cushion Length:

ft

Water Salinity:

ppm

Viscosity: 54.00 sec/qt

Cushion Volume:

bbl

Water Loss: in<sup>3</sup>

Gas Cushion Type:

Resistivity: ohm.m

Gas Cushion Pressure:

psig

Salinity: ppm

Filter Cake: 1.00 inches

## Recovery Information

Recovery Table

Length ft	Description	Volume bbl
183.00	Gassy mud cut oil	1.267
0.00	Gas 60% Oil 15% Mud 25%	0.000
107.00	Gassy mud cut oil	1.501
0.00	Gas 75% Oil 5% Mud 20%	0.000
0.00	244 Gas in pipe	0.000

Total Length: 290.00 ft

Total Volume: 2.768 bbl

Num Fluid Samples: 0

Num Gas Bombs: 0

Serial #:

Laboratory Name:

Laboratory Location:

Recovery Comments:

Serial #: 8931

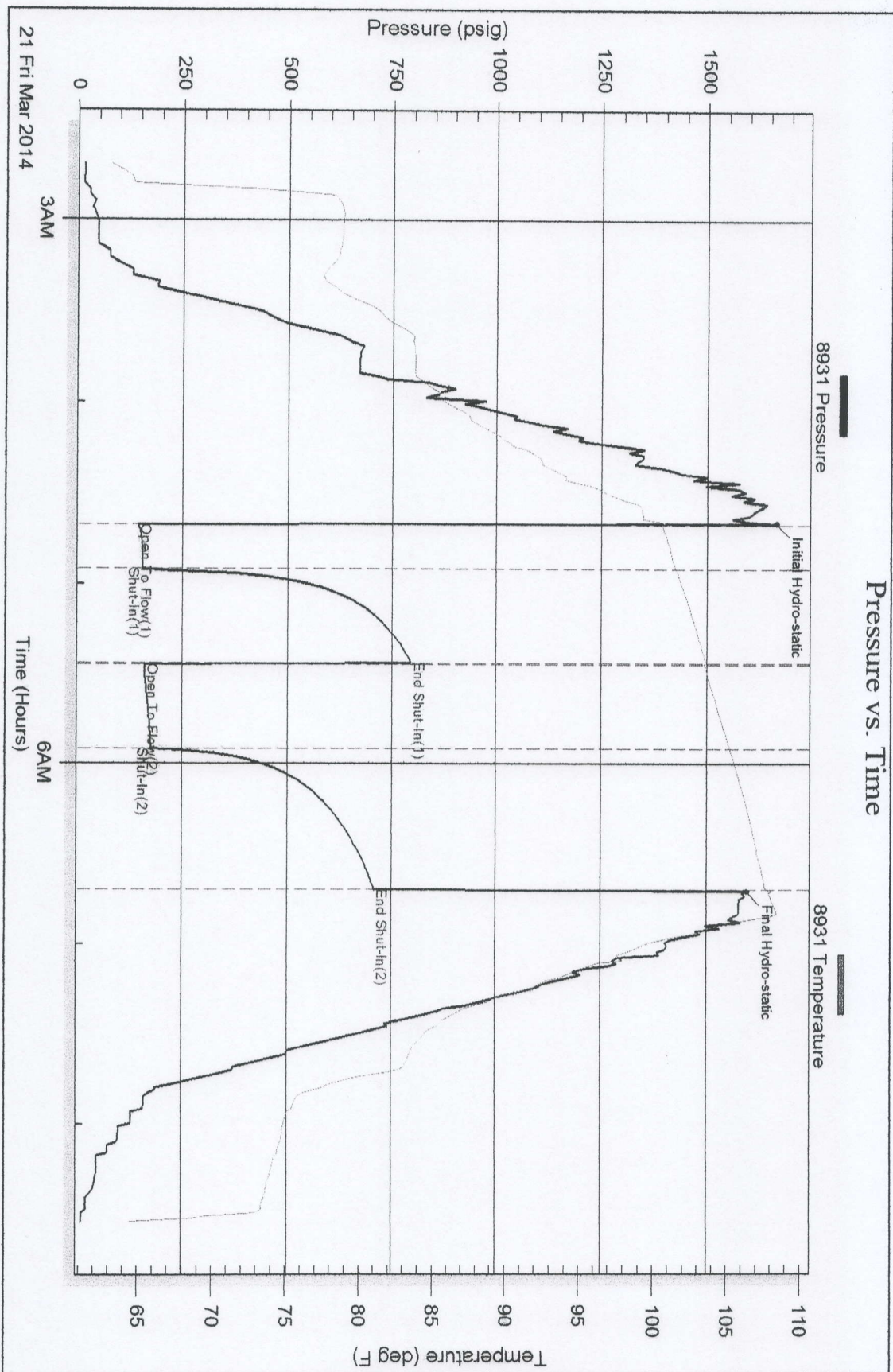
Inside

Carrie Exploration

Cementary C-2

DST Test Number: 2

### Pressure vs. Time



Superior Testers Enterprises LLC

Ref. No: 18305

Printed: 2014.03.21 @ 21:53:09