



DRILL STEM TEST REPORT

Prepared For: **Evertson Operating Company, Inc.**

4362 E. Hwy 30
P.O. Box 397
Kimball NE, 69145

ATTN: Steve Schindler

Meyer #11-26

28/3s/14e/Nemeha

Start Date: 2013.11.16 @ 22:10:00

End Date: 2013.11.17 @ 06:31:30

Job Ticket #: 18519 DST #: 1

Superior Testers Enterprises LLC
PO Box 138 Great Bend KS 67530
1-800-792-6902

Printed: 2013.11.17 @ 06:48:51



DRILL STEM TEST REPORT

Evertson Operating Company, Inc.

28/3s/14e/Nemeha

4362 E. Hwy 30
 P.O. Box 397
 Kimball NE, 69145
 ATTN: Steve Schindler

Meyer #11-26

Job Ticket: 18519

DST#: 1

Test Start: 2013.11.16 @ 22:10:00

GENERAL INFORMATION:

Formation: **Viola dolomite**
 Deviated: No Whipstock: ft (KB)
 Time Tool Opened: 00:32:30
 Time Test Ended: 06:31:30
 Interval: **3616.00 ft (KB) To 3680.00 ft (KB) (TVD)**
 Total Depth: 3680.00 ft (KB) (TVD)
 Hole Diameter: 7.88 inches Hole Condition: Poor
 Test Type: Conventional Bottom Hole (Initial)
 Tester: Shane Konzem
 Unit No: 3330/480/Great Bend
 Reference Elevations: ft (KB)
 1279.00 ft (CF)
 KB to GR/CF: ft

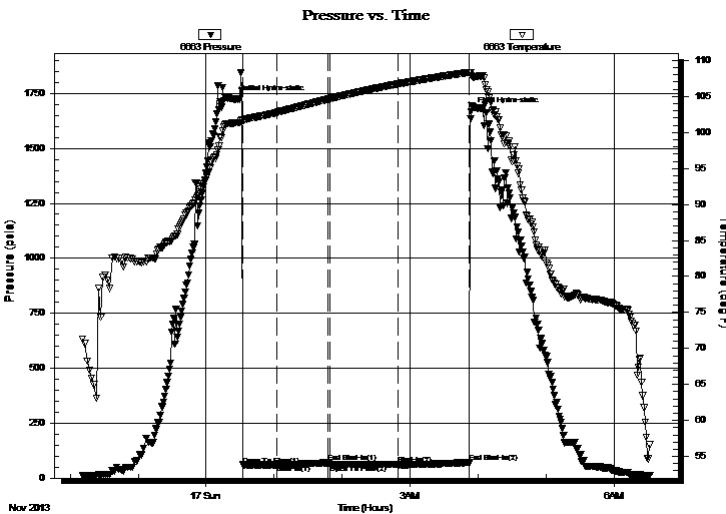
Serial #: 6663

Inside

Press @ Run Depth: 61.81 psia @ 3674.50 ft (KB) Capacity: 5000.00 psia
 Start Date: 2013.11.16 End Date: 2013.11.17 Last Calib.: 2013.11.17
 Start Time: 22:10:00 End Time: 06:31:30 Time On Btm: 2013.11.17 @ 00:26:30
 Time Off Btm: 2013.11.17 @ 03:54:00

TEST COMMENT: 1st Open/ 30 Minutes. Weak surface blow died after 18 minutes.
 1st Shut In/ 45 Minutes. No blow back.
 2nd Open/ 60 Minutes. No blow. Did not flush tool per geo.
 2nd Shut In/ 60 Minutes. No blow back.

PRESSURE SUMMARY



Time (Min.)	Pressure (psia)	Temp (deg F)	Annotation
0	1722.35	101.34	Initial Hydro-static
6	60.29	101.61	Open To Flow (1)
36	60.63	102.75	Shut-In(1)
81	70.28	104.61	End Shut-In(1)
83	60.98	104.67	Open To Flow (2)
143	61.81	106.72	Shut-In(2)
206	70.49	108.34	End Shut-In(2)
208	1666.22	107.94	Final Hydro-static

Recovery

Length (ft)	Description	Volume (bbl)
1.00	mud cut water	0.00

Gas Rates

Choke (inches)	Pressure (psia)	Gas Rate (Mcf/d)



DRILL STEM TEST REPORT

TOOL DIAGRAM

Evertson Operating Company, Inc.

28/3s/14e/Nemeha

4362 E. Hwy 30

Meyer #11-26

P.O. Box 397

Job Ticket: 18519

DST#: 1

Kimball NE, 69145

ATTN: Steve Schindler

Test Start: 2013.11.16 @ 22:10:00

Tool Information

Drill Pipe:	Length: 2826.00 ft	Diameter: 3.80 inches	Volume: 39.64 bbl	Tool Weight: 2000.00 lb
Heavy Wt. Pipe:	Length: 0.00 ft	Diameter: 0.00 inches	Volume: 0.00 bbl	Weight set on Packer: 25000.00 lb
Drill Collar:	Length: 780.33 ft	Diameter: 2.25 inches	Volume: 3.84 bbl	Weight to Pull Loose: 74000.00 lb
			<u>Total Volume: 43.48 bbl</u>	Tool Chased 0.00 ft
Drill Pipe Above KB:	19.33 ft			String Weight: Initial 62000.00 lb
Depth to Top Packer:	3616.00 ft			Final 62000.00 lb
Depth to Bottom Packer:	ft			
Interval between Packers:	64.50 ft			
Tool Length:	93.50 ft			
Number of Packers:	2	Diameter: 6.75 inches		

Tool Comments:

Tool Description	Length (ft)	Serial No.	Position	Depth (ft)	Accum. Lengths
Change Over Sub	1.00			3588.00	
Shut-In Tool	5.00			3593.00	
Hydroic Tool	5.00			3598.00	
Jars	6.00			3604.00	
Safety Joint	2.00			3606.00	
Packer	5.00			3611.00	29.00 Bottom Of Top Packer
Packer	5.00			3616.00	
Perforations	5.00			3621.00	
Change Over Sub	0.75			3621.75	
Drill Pipe	31.00			3652.75	
Change Over Sub	0.75			3653.50	
Perforations	20.00			3673.50	
Recorder	1.00	6663	Inside	3674.50	
Recorder	1.00	6748	Outside	3675.50	
Bullnose	5.00			3680.50	64.50 Bottom Packers & Anchor

Total Tool Length: 93.50



DRILL STEM TEST REPORT

FLUID SUMMARY

Evertson Operating Company, Inc.

28/3s/14e/Nemeha

4362 E. Hwy 30
P.O. Box 397
Kimball NE, 69145
ATTN: Steve Schindler

Meyer #11-26

Job Ticket: 18519

DST#: 1

Test Start: 2013.11.16 @ 22:10:00

Mud and Cushion Information

Mud Type: Gel Chem

Mud Weight: 9.00 lb/gal

Viscosity: 42.00 sec/qt

Water Loss: 9.40 in³

Resistivity: ohm.m

Salinity: 600.00 ppm

Filter Cake: 2.00 inches

Cushion Type:

Cushion Length: ft

Cushion Volume: bbl

Gas Cushion Type:

Gas Cushion Pressure: psia

Oil API:

Water Salinity: deg API

ppm

Recovery Information

Recovery Table

Length ft	Description	Volume bbl
1.00	mud cut water	0.005

Total Length: 1.00 ft Total Volume: 0.005 bbl

Num Fluid Samples: 0

Num Gas Bombs: 0

Serial #:

Laboratory Name:

Laboratory Location:

Recovery Comments:

Pressure vs. Time

