



## DRILL STEM TEST REPORT

Prepared For: **Evertson Operating Company, Inc.**

4362 E. Hwy 30  
P.O. Box 397  
Kimball NE, 69145

ATTN: Steve Schindler

**Gilsdorf #31-7**

**77s/12e/Pottawatomie**

Start Date: 2013.12.03 @ 21:06:00

End Date: 2013.12.04 @ 05:00:30

Job Ticket #: 18607                      DST #: 1

Superior Testers Enterprises LLC  
PO Box 138 Great Bend KS 67530  
1-800-792-6902

Printed: 2013.12.04 @ 05:24:50

Evertson Operating Company, Inc.

77s/12e/Pottawatomie

Gilsdorf #31-7

DST # 1

Upper Hutton

2013.12.03



# DRILL STEM TEST REPORT

Evertson Operating Company, Inc.

**7/7s/12e/Pottawatomie**

4362 E. Hwy 30  
 P.O. Box 397  
 Kimball NE, 69145  
 ATTN: Steve Schindler

**Gilsdorf #31-7**

Job Ticket: 18607

**DST#: 1**

Test Start: 2013.12.03 @ 21:06:00

## GENERAL INFORMATION:

Formation: **Upper Hutton**

Deviated: No Whipstock: ft (KB)

Time Tool Opened: 23:24:00

Time Test Ended: 05:00:30

Test Type: Conventional Bottom Hole (Initial)

Tester: Shane Konzem

Unit No: 3330/

**Interval: 2357.00 ft (KB) To 2367.00 ft (KB) (TVD)**

Reference Elevations: 1323.00 ft (KB)

Total Depth: 2367.00 ft (KB) (TVD)

1314.00 ft (CF)

Hole Diameter: 7.88 inches Hole Condition: Poor

KB to GR/CF: 9.00 ft

**Serial #: 6663 Inside**

Press @ RunDepth: 41.25 psia @ 2363.00 ft (KB)

Capacity: 5000.00 psia

Start Date: 2013.12.03

End Date: 2013.12.04

Last Calib.: 2013.12.04

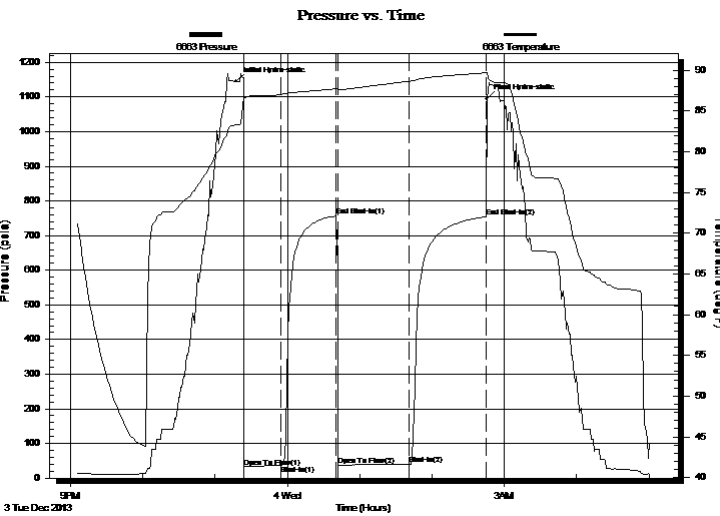
Start Time: 21:06:00

End Time: 05:00:30

Time On Btm: 2013.12.03 @ 23:17:30

Time Off Btm: 2013.12.04 @ 02:45:30

**TEST COMMENT:** 1st Open/ 30 Minutes. Weak blow built to 1/2 inch in 5 gallon bucket of w ater.  
 1st Shut In/ 45 Minutes. No blow back.  
 2nd Open/ 60 Minutes. Weak surface blow that died after 40 minutes.  
 2nd Shut In/ 60 Minutes. No blow back.



## PRESSURE SUMMARY

Time (Min.)	Pressure (psia)	Temp (deg F)	Annotation
0	1145.03	83.33	Initial Hydro-static
7	32.30	86.35	Open To Flow (1)
37	35.85	86.99	Shut-In(1)
83	757.67	87.73	End Shut-In(1)
85	37.24	87.61	Open To Flow (2)
143	41.25	88.64	Shut-In(2)
207	754.42	89.68	End Shut-In(2)
208	1094.15	89.74	Final Hydro-static

## Recovery

Length (ft)	Description	Volume (bbl)
10.00	100% mud	0.05

## Gas Rates

Choke (inches)	Pressure (psia)	Gas Rate (Mcf/d)



# DRILL STEM TEST REPORT

Evertson Operating Company, Inc.

7/7s/12e/Pottawatomie

4362 E. Hwy 30  
P.O. Box 397  
Kimball NE, 69145  
ATTN: Steve Schindler

Gilsdorf #31-7

Job Ticket: 18607

DST#: 1

Test Start: 2013.12.03 @ 21:06:00

## GENERAL INFORMATION:

Formation: **Upper Hutton**

Deviated: No Whipstock: ft (KB)

Time Tool Opened: 23:24:00

Time Test Ended: 05:00:30

Test Type: Conventional Bottom Hole (Initial)

Tester: Shane Konzem

Unit No: 3330/

Interval: **2357.00 ft (KB) To 2367.00 ft (KB) (TVD)**

Reference Elevations: 1323.00 ft (KB)

Total Depth: 2367.00 ft (KB) (TVD)

1314.00 ft (CF)

Hole Diameter: 7.88 inches Hole Condition: Poor

KB to GR/CF: 9.00 ft

Serial #: **6651** Outside

Press @ RunDepth: 755.94 psia @ 2364.00 ft (KB)

Capacity: 5000.00 psia

Start Date: 2013.12.03

End Date: 2013.12.04

Last Calib.: 2013.12.04

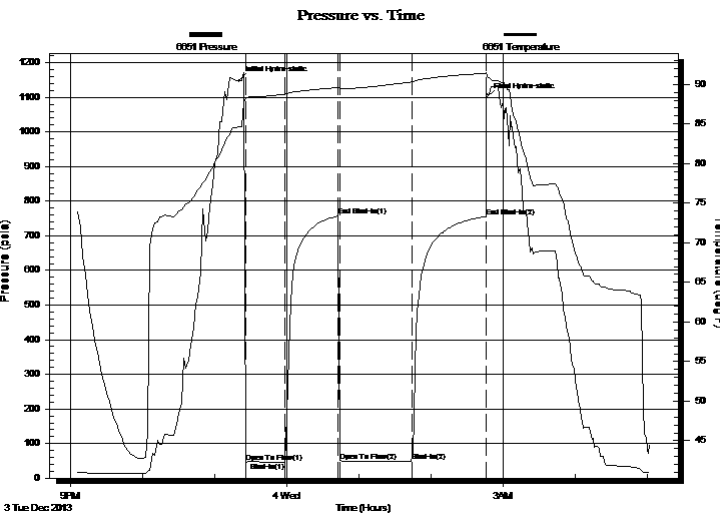
Start Time: 21:05:00

End Time: 05:01:30

Time On Btm: 2013.12.03 @ 23:20:00

Time Off Btm: 2013.12.04 @ 02:46:00

TEST COMMENT: 1st Open/ 30 Minutes. Weak blow built to 1/2 inch in 5 gallon bucket of w ater.  
1st Shut In/ 45 Minutes. No blow back.  
2nd Open/ 60 Minutes. Weak surface blow that died after 40 minutes.  
2nd Shut In/ 60 Minutes. No blow back.



## PRESSURE SUMMARY

Time (Min.)	Pressure (psia)	Temp (deg F)	Annotation
0	1147.40	84.60	Initial Hydro-static
6	46.65	88.14	Open To Flow (1)
38	46.18	88.75	Shut-In(1)
83	756.75	89.58	End Shut-In(1)
84	49.95	89.40	Open To Flow (2)
144	47.91	90.30	Shut-In(2)
206	755.94	91.41	End Shut-In(2)
206	1098.19	91.51	Final Hydro-static

## Recovery

Length (ft)	Description	Volume (bbl)
10.00	100% mud	0.05

## Gas Rates

	Choke (inches)	Pressure (psia)	Gas Rate (Mcf/d)



# DRILL STEM TEST REPORT

**TOOL DIAGRAM**

Evertson Operating Company, Inc.

**7/7s/12e/Pottawatomie**

4362 E. Hwy 30

**Gilsdorf #31-7**

P.O. Box 397

Job Ticket: 18607

**DST#: 1**

Kimball NE, 69145

ATTN: Steve Schindler

Test Start: 2013.12.03 @ 21:06:00

## Tool Information

Drill Pipe:	Length: 2066.00 ft	Diameter: 3.80 inches	Volume: 28.98 bbl	Tool Weight: 2000.00 lb
Heavy Wt. Pipe:	Length: 0.00 ft	Diameter: 0.00 inches	Volume: 0.00 bbl	Weight set on Packer: 25000.00 lb
Drill Collar:	Length: 280.33 ft	Diameter: 2.25 inches	Volume: 1.38 bbl	Weight to Pull Loose: 52000.00 lb
			<u>Total Volume: 30.36 bbl</u>	Tool Chased 0.00 ft
Drill Pipe Above KB:	18.33 ft			String Weight: Initial 40000.00 lb
Depth to Top Packer:	2357.00 ft			Final 40000.00 lb
Depth to Bottom Packer:	ft			
Interval between Packers:	10.00 ft			
Tool Length:	39.00 ft			
Number of Packers:	2	Diameter: 6.75 inches		

Tool Comments:

Tool Description	Length (ft)	Serial No.	Position	Depth (ft)	Accum. Lengths
------------------	-------------	------------	----------	------------	----------------

Change Over Sub	1.00			2329.00	
Shut-In Tool	5.00			2334.00	
Hydroic Tool	5.00			2339.00	
Jars	6.00			2345.00	
Safety Joint	2.00			2347.00	
Packer	5.00			2352.00	29.00 Bottom Of Top Packer
Packer	5.00			2357.00	
Perforations	5.00			2362.00	
Recorder	1.00	6663	Inside	2363.00	
Recorder	1.00	6651	Outside	2364.00	
Bullnose	3.00			2367.00	10.00 Bottom Packers & Anchor

**Total Tool Length: 39.00**



# DRILL STEM TEST REPORT

## FLUID SUMMARY

Evertson Operating Company, Inc.

**7/7s/12e/Pottawatomie**

4362 E. Hwy y 30

**Gilsdorf #31-7**

P.O. Box 397

Job Ticket: 18607

**DST#: 1**

Kimball NE, 69145

ATTN: Steve Schindler

Test Start: 2013.12.03 @ 21:06:00

### Mud and Cushion Information

Mud Type: Gel Chem

Cushion Type:

Oil API:

deg API

Mud Weight: 9.00 lb/gal

Cushion Length:

ft

Water Salinity:

ppm

Viscosity: 45.00 sec/qt

Cushion Volume:

bbbl

Water Loss: 8.98 in<sup>3</sup>

Gas Cushion Type:

Resistivity: ohm.m

Gas Cushion Pressure:

psia

Salinity: 300.00 ppm

Filter Cake: 2.00 inches

### Recovery Information

Recovery Table

Length ft	Description	Volume bbl
10.00	100% mud	0.049

Total Length: 10.00 ft      Total Volume: 0.049 bbl

Num Fluid Samples: 0

Num Gas Bombs: 0

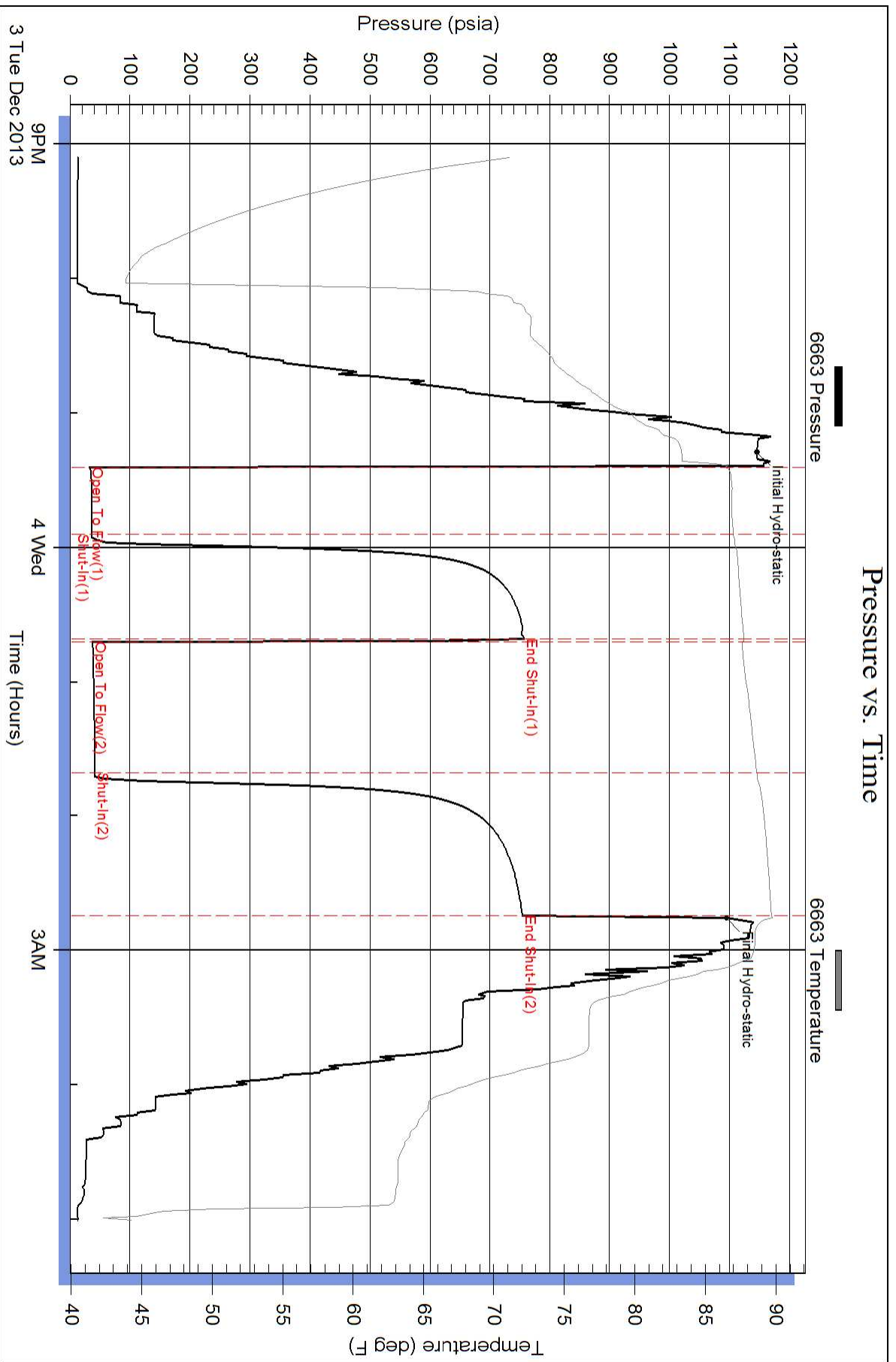
Serial #:

Laboratory Name:

Laboratory Location:

Recovery Comments:

# Pressure vs. Time



# Pressure vs. Time

