



**TRILOBITE TESTING, INC.**

# DRILL STEM TEST REPORT

Shakespeare Oil Co., Inc.

**25-16s-34w Scott Co.**

202 W Main St  
Salem, IL 62881

**Ortega #1-25**

Job Ticket: 56351

**DST#: 3**

ATTN: Tim Priest

Test Start: 2014.02.21 @ 16:00:00

## GENERAL INFORMATION:

Formation: **Marmaton "A & B"**

Deviated: No Whipstock: ft (KB)

Time Tool Opened: 19:04:30

Time Test Ended: 02:26:45

Test Type: Conventional Bottom Hole (Reset)

Tester: Sam Esparza

Unit No: 71

Interval: **4431.00 ft (KB) To 4480.00 ft (KB) (TVD)**

Reference Elevations: 3105.00 ft (KB)

Total Depth: 4480.00 ft (KB) (TVD)

3095.00 ft (CF)

Hole Diameter: 7.88 inches Hole Condition: Good

KB to GR/CF: 10.00 ft

**Serial #: 8845**

**Inside**

Press@RunDepth: 733.87 psig @ 4432.00 ft (KB)

Capacity: 8000.00 psig

Start Date: 2014.02.21

End Date:

2014.02.22

Last Calib.:

2014.02.22

Start Time: 16:00:05

End Time:

02:26:45

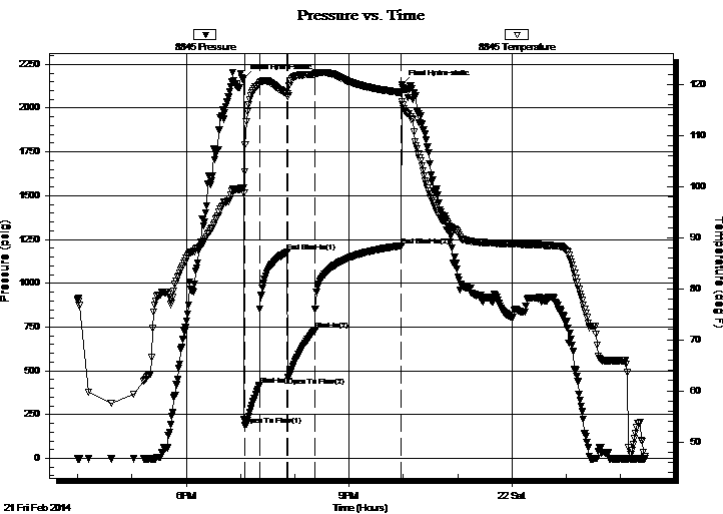
Time On Btm:

2014.02.21 @ 19:03:45

Time Off Btm:

2014.02.21 @ 21:58:30

TEST COMMENT: IF: BOB @ 1 min.  
IS: Bled off for 6 min. BOB Return @ 14 min.  
FF: BOB Immediately.  
FS: Bled off for 6 min. BOB Return @ 26 min.



## PRESSURE SUMMARY

| Time (Min.) | Pressure (psig) | Temp (deg F) | Annotation           |
|-------------|-----------------|--------------|----------------------|
| 0           | 2168.95         | 99.71        | Initial Hydro-static |
| 1           | 190.52          | 102.87       | Open To Flow (1)     |
| 17          | 417.92          | 120.02       | Shut-In(1)           |
| 48          | 1178.40         | 118.13       | End Shut-In(1)       |
| 49          | 463.39          | 117.58       | Open To Flow (2)     |
| 79          | 733.87          | 122.04       | Shut-In(2)           |
| 174         | 1213.88         | 118.37       | End Shut-In(2)       |
| 175         | 2132.07         | 116.61       | Final Hydro-static   |

## Recovery

| Length (ft) | Description | Volume (bbl) |
|-------------|-------------|--------------|
| 1905.00     | GO 30g 70o  | 25.64        |
| 0.00        | 1200' GIP   | 0.00         |
|             |             |              |
|             |             |              |
|             |             |              |

\* Recovery from multiple tests

## Gas Rates

|  | Choke (inches) | Pressure (psig) | Gas Rate (Mcf/d) |
|--|----------------|-----------------|------------------|
|  |                |                 |                  |



**TRILOBITE  
TESTING, INC**

# DRILL STEM TEST REPORT

## FLUID SUMMARY

Shakespeare Oil Co., Inc.

**25-16s-34w Scott Co.**

202 W Main St  
Salem, IL 62881

**Ortega #1-25**

Job Ticket: 56351

**DST#: 3**

ATTN: Tim Priest

Test Start: 2014.02.21 @ 16:00:00

### Mud and Cushion Information

Mud Type: Gel Chem

Cushion Type:

Oil API:

36 deg API

Mud Weight: 9.00 lb/gal

Cushion Length:

ft

Water Salinity:

ppm

Viscosity: 54.00 sec/qt

Cushion Volume:

bbl

Water Loss: 8.79 in<sup>3</sup>

Gas Cushion Type:

Resistivity: 0.00 ohm.m

Gas Cushion Pressure:

psig

Salinity: 7000.00 ppm

Filter Cake: 1.00 inches

### Recovery Information

Recovery Table

| Length<br>ft | Description | Volume<br>bbl |
|--------------|-------------|---------------|
| 1905.00      | GO 30g 70o  | 25.638        |
| 0.00         | 1200' GIP   | 0.000         |

Total Length: 1905.00 ft      Total Volume: 25.638 bbl

Num Fluid Samples: 0

Num Gas Bombs: 0

Serial #:

Laboratory Name:

Laboratory Location:

Recovery Comments: Oil API: 34 @ 40 degrees= 36 deg API

