



**TRILOBITE  
TESTING, INC**

# DRILL STEM TEST REPORT

Shakespeare Oil Inc

**2-16s-31w Scott, Ks**

202 W Main St  
Salem, Il  
62881  
ATTN: Tim Priest

**York #2-2**

Job Ticket: 56298

**DST#: 2**

Test Start: 2014.03.20 @ 21:11:04

## GENERAL INFORMATION:

Formation: **Johnson**

Deviated: No Whipstock: 0.00 ft (KB)

Time Tool Opened: 23:33:04

Time Test Ended: 06:00:04

Test Type: Conventional Bottom Hole (Reset)

Tester: Shane McBride

Unit No: 55

**Interval: 4417.00 ft (KB) To 4460.00 ft (KB) (TVD)**

Reference Elevations: 2773.00 ft (KB)

Total Depth: 4460.00 ft (KB) (TVD)

2765.00 ft (CF)

Hole Diameter: 7.88 inches Hole Condition: Fair

KB to GR/CF: 8.00 ft

**Serial #: 6771 Inside**

Press@RunDepth: 92.18 psig @ 4422.00 ft (KB)

Capacity: 8000.00 psig

Start Date: 2014.03.20

End Date: 2014.03.21

Last Calib.: 2014.03.21

Start Time: 21:11:04

End Time: 05:42:04

Time On Btm: 2014.03.20 @ 23:32:49

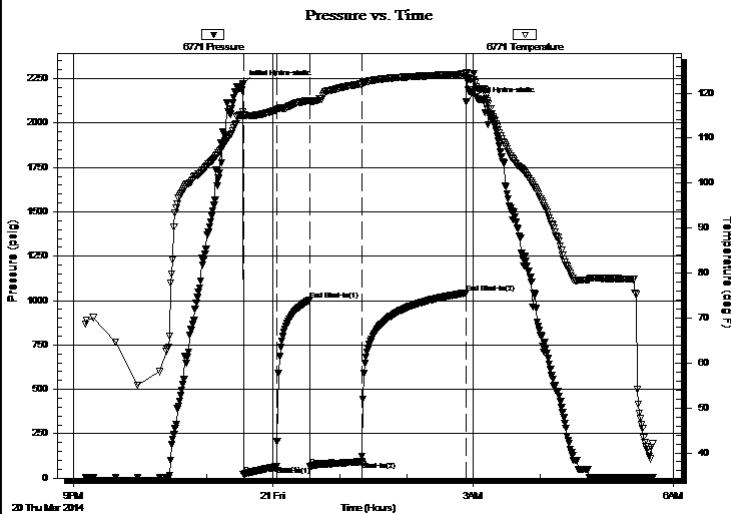
Time Off Btm: 2014.03.21 @ 02:54:04

TEST COMMENT: 2 3/4" blow

No return

3" blow

No return



## PRESSURE SUMMARY

Time (Min.)	Pressure (psig)	Temp (deg F)	Annotation
0	2219.05	115.84	Initial Hydro-static
1	19.61	115.16	Open To Flow (1)
31	65.10	116.22	Shut-In(1)
60	1002.62	118.41	End Shut-In(1)
61	67.05	118.10	Open To Flow (2)
107	92.18	122.03	Shut-In(2)
201	1043.08	124.26	End Shut-In(2)
202	2121.91	124.61	Final Hydro-static

## Recovery

Length (ft)	Description	Volume (bbl)
120.00	w c m 30%w 70%mw /oil scum	0.59
40.00	s w c m 10%w 90%m	0.55
0.00	show of oil in top of tool	0.00

## Gas Rates

	Choke (inches)	Pressure (psig)	Gas Rate (Mcf/d)

\* Recovery from multiple tests



**TRILOBITE  
TESTING, INC**

# DRILL STEM TEST REPORT

**FLUID SUMMARY**

Shakespeare Oil Inc  
202 W Main St  
Salem, IL  
62881  
ATTN: Tim Priest

**2-16s-31w Scott, Ks**  
**York #2-2**  
Job Ticket: 56298      **DST#: 2**  
Test Start: 2014.03.20 @ 21:11:04

## Mud and Cushion Information

Mud Type: Gel Chem	Cushion Type:	Oil API: 0 deg API
Mud Weight: 9.00 lb/gal	Cushion Length: ft	Water Salinity: 24000 ppm
Viscosity: 53.00 sec/qt	Cushion Volume: bbl	
Water Loss: 7.20 in <sup>3</sup>	Gas Cushion Type:	
Resistivity: 0.00 ohm.m	Gas Cushion Pressure: psig	
Salinity: 3000.00 ppm		
Filter Cake: 1.00 inches		

## Recovery Information

Recovery Table

Length ft	Description	Volume bbl
120.00	w c m 30%w 70%mw/oil scum	0.590
40.00	s w c m 10%w 90%m	0.552
0.00	show of oil in top of tool	0.000

Total Length: 160.00 ft      Total Volume: 1.142 bbl

Num Fluid Samples: 0      Num Gas Bombs: 0      Serial #:

Laboratory Name:      Laboratory Location:

Recovery Comments: rw .442 @ 42\*f = 24,000 chlor

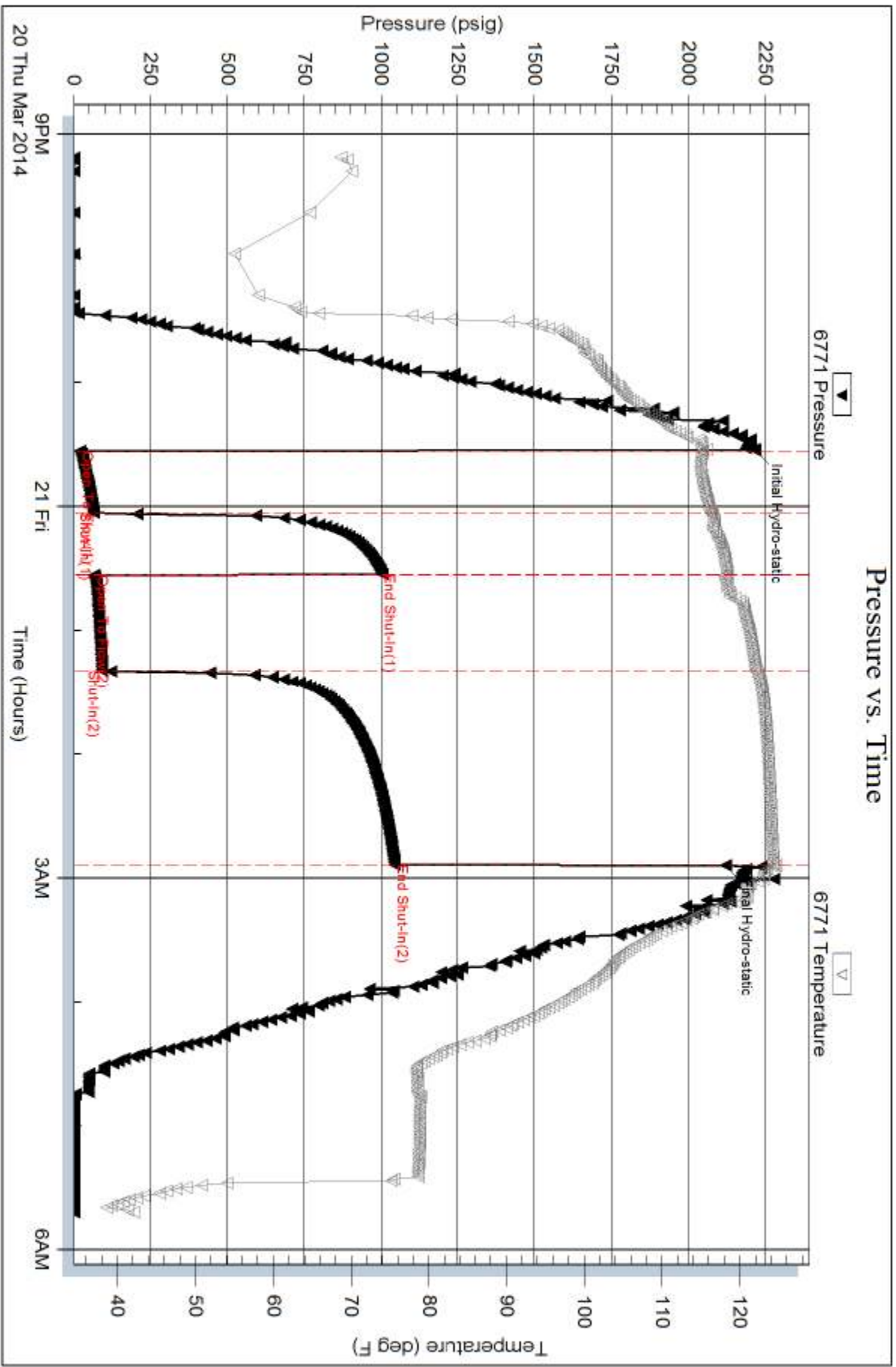
Serial #: 6771

Inside

Shakespeare Oil Inc

York #2-2

DST Test Number: 2



Trilobite Testing, Inc

Ref. No: 56298

Printed: 2014.03.21 @ 09:11:09