



**TRILOBITE TESTING, INC**

# DRILL STEM TEST REPORT

Shakespeare Oil Co. Inc.

**35-16s-34w-Scott Co. KS**

202 W. Main St.  
Salem, IL 62881

**COG #1-35**

Job Ticket: 56501

**DST#: 2**

ATTN: Mark W. Herndon

Test Start: 2014.03.11 @ 21:46:00

## GENERAL INFORMATION:

Formation: **Marmaton 'B & C'**  
 Deviated: No Whipstock: ft (KB)  
 Time Tool Opened: 00:36:00  
 Time Test Ended: 05:23:00  
 Interval: **4493.00 ft (KB) To 4550.00 ft (KB) (TVD)**  
 Total Depth: 4550.00 ft (KB) (TVD)  
 Hole Diameter: 7.88 inches Hole Condition: Good  
 Test Type: Conventional Bottom Hole (Reset)  
 Tester: Cornelio Landa III  
 Unit No: 71  
 Reference Elevations: 3122.00 ft (KB)  
 3110.00 ft (CF)  
 KB to GR/CF: 12.00 ft

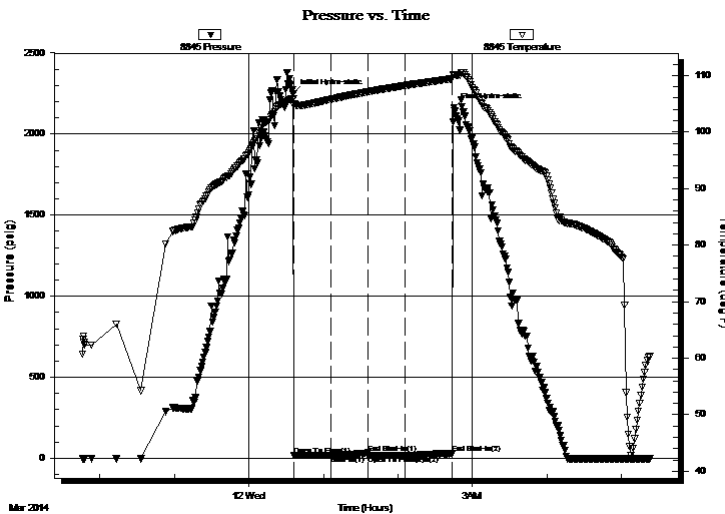
## Serial #: 8845

Outside

Press@RunDepth: 19.28 psig @ 4495.00 ft (KB) Capacity: 8000.00 psig  
 Start Date: 2014.03.11 End Date: 2014.03.12 Last Calib.: 2014.03.12  
 Start Time: 21:46:05 End Time: 05:22:59 Time On Btm: 2014.03.12 @ 00:35:45  
 Time Off Btm: 2014.03.12 @ 02:45:15

TEST COMMENT: IF: Weak surface blow off & on-Died in 10 min.  
 IS: No return  
 FF: No blow  
 FS: No return

## PRESSURE SUMMARY



Time (Min.)	Pressure (psig)	Temp (deg F)	Annotation
0	2251.90	105.90	Initial Hydro-static
1	17.49	104.63	Open To Flow (1)
30	19.49	105.77	Shut-In(1)
61	33.47	107.11	End Shut-In(1)
61	17.30	107.12	Open To Flow (2)
91	19.28	108.23	Shut-In(2)
128	30.78	109.41	End Shut-In(2)
130	2161.19	110.18	Final Hydro-static

## Recovery

Length (ft)	Description	Volume (bbl)
20.00	Mud 100m w /oil specs	0.28

\* Recovery from multiple tests

## Gas Rates

Choke (inches)	Pressure (psig)	Gas Rate (Mcf/d)



**TRILOBITE  
TESTING, INC**

# DRILL STEM TEST REPORT

**FLUID SUMMARY**

Shakespeare Oil Co. Inc.

**35-16s-34w-Scott Co. KS**

202 W. Main St.  
Salem, IL 62881

**COG #1-35**

Job Ticket: 56501

**DST#: 2**

ATTN: Mark W. Herndon

Test Start: 2014.03.11 @ 21:46:00

## Mud and Cushion Information

Mud Type: Gel Chem

Cushion Type:

Oil API:

deg API

Mud Weight: 9.00 lb/gal

Cushion Length:

ft

Water Salinity:

ppm

Viscosity: 58.00 sec/qt

Cushion Volume:

bbbl

Water Loss: 8.78 in<sup>3</sup>

Gas Cushion Type:

Resistivity: 0.00 ohm.m

Gas Cushion Pressure:

psig

Salinity: 6000.00 ppm

Filter Cake: 1.00 inches

## Recovery Information

Recovery Table

Length ft	Description	Volume bbl
20.00	Mud 100m w/oil specs	0.281

Total Length: 20.00 ft      Total Volume: 0.281 bbl

Num Fluid Samples: 0

Num Gas Bombs: 0

Serial #:

Laboratory Name:

Laboratory Location:

Recovery Comments:

