



TRILOBITE TESTING, INC.

DRILL STEM TEST REPORT

Russell Oil Inc.
 P.o Box 8050
 Edmond OK. 73083
 ATTN: Kitt Noah

3-16s-35w Wichita Co. KS
Ken Baker A # 3-1
 Job Ticket: 56302 **DST#: 4**
 Test Start: 2014.02.03 @ 22:58:00

GENERAL INFORMATION:

Formation: **Alt " B "**
 Deviated: No Whipstock: ft (KB)
 Time Tool Opened: 00:52:10
 Time Test Ended: 04:37:39
 Interval: **4428.00 ft (KB) To 4445.00 ft (KB) (TVD)**
 Total Depth: 4445.00 ft (KB) (TVD)
 Hole Diameter: 7.88 inches Hole Condition: Good
 Test Type: Conventional Bottom Hole (Reset)
 Tester: Will MacLean
 Unit No: 72
 Reference Elevations: 3188.00 ft (KB)
 3177.00 ft (CF)
 KB to GR/CF: 11.00 ft

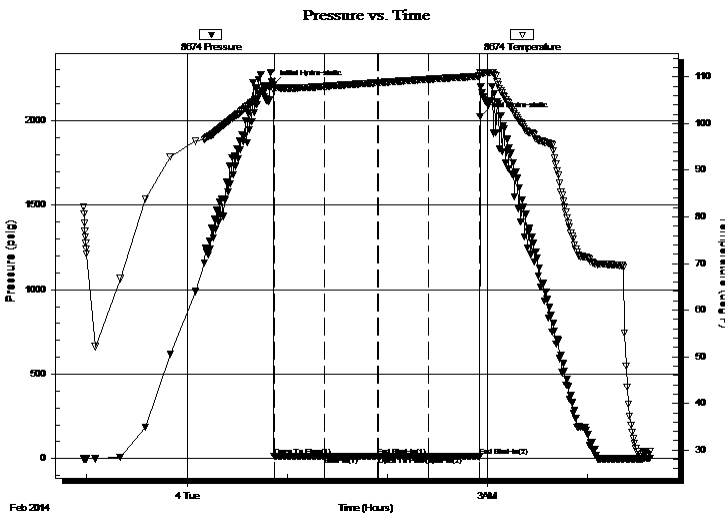
Serial #: 8674

Inside

Press @ Run Depth: 12.17 psig @ 4430.00 ft (KB) Capacity: 8000.00 psig
 Start Date: 2014.02.03 End Date: 2014.02.04 Last Calib.: 2014.02.04
 Start Time: 22:58:00 End Time: 04:37:39 Time On Btm: 2014.02.04 @ 00:51:55
 Time Off Btm: 2014.02.04 @ 02:55:40

TEST COMMENT: IF- Weak Surface Blow Built to 1/2"
 IS- No Blow
 FF- No Blow Flushed the Tool No Blow
 FS- No Blow

PRESSURE SUMMARY



Time (Min.)	Pressure (psig)	Temp (deg F)	Annotation
0	2215.14	108.24	Initial Hydro-static
1	11.54	107.26	Open To Flow (1)
31	12.81	107.96	Shut-In(1)
63	13.77	108.76	End Shut-In(1)
63	13.81	108.78	Open To Flow (2)
93	12.17	109.48	Shut-In(2)
124	14.40	110.15	End Shut-In(2)
124	2022.78	110.96	Final Hydro-static

Recovery

Length (ft)	Description	Volume (bbl)
2.00	100% m with a Skim of Oil	0.01

* Recovery from multiple tests

Gas Rates

Choke (inches)	Pressure (psig)	Gas Rate (Mcf/d)



**TRILOBITE
TESTING, INC.**

DRILL STEM TEST REPORT

FLUID SUMMARY

Russell Oil Inc.

3-16s-35w Wichita Co. KS

P.o Box 8050
Edmond OK. 73083

Ken Baker A # 3-1

Job Ticket: 56302

DST#: 4

ATTN: Kitt Noah

Test Start: 2014.02.03 @ 22:58:00

Mud and Cushion Information

Mud Type: Gel Chem

Cushion Type:

Oil API:

deg API

Mud Weight: 9.00 lb/gal

Cushion Length:

ft

Water Salinity:

ppm

Viscosity: 48.00 sec/qt

Cushion Volume:

bbbl

Water Loss: 8.77 in³

Gas Cushion Type:

Resistivity: ohm.m

Gas Cushion Pressure:

psig

Salinity: 6000.00 ppm

Filter Cake: 1.00 inches

Recovery Information

Recovery Table

Length ft	Description	Volume bbl
2.00	100% m with a Skim of Oil	0.010

Total Length: 2.00 ft Total Volume: 0.010 bbl

Num Fluid Samples: 0

Num Gas Bombs: 0

Serial #:

Laboratory Name:

Laboratory Location:

Recovery Comments:

Pressure vs. Time

