

TRILOBITE TESTING, INC.

DRILL STEM TEST REPORT

Tomlinson Operating
7154 W.State St #302
Boise ID, 83714
ATTN: Bob O'Dell

25-13s-20w-Ellis Co.
Younger #1
Job Ticket: 54838 **DST#: 2**
Test Start: 2013.10.09 @ 21:12:10

GENERAL INFORMATION:

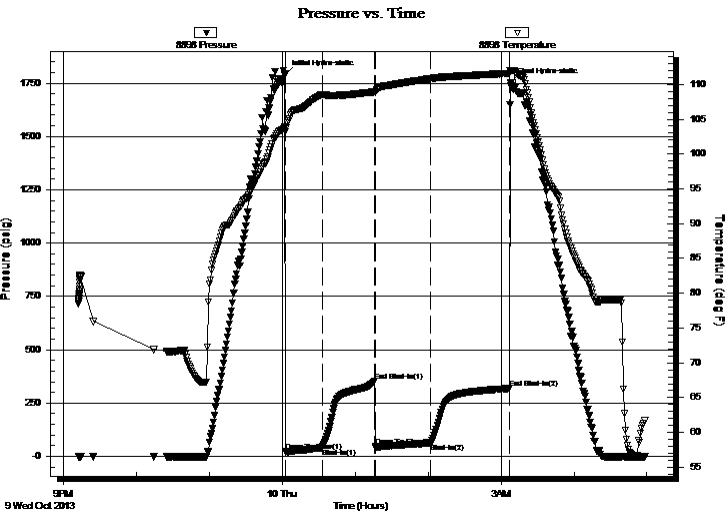
Formation: **Lansing I,J,K**
Deviated: No Whipstock: ft (KB)
Time Tool Opened: 00:02:20
Time Test Ended: 04:58:30
Interval: **3633.00 ft (KB) To 3685.00 ft (KB) (TVD)**
Total Depth: 3685.00 ft (KB) (TVD)
Hole Diameter: 7.88 inches Hole Condition: Good
Reference Elevations: 2206.00 ft (KB)
2193.00 ft (CF)
KB to GR/CF: 13.00 ft
Test Type: Conventional Bottom Hole (Reset)
Tester: Tate Lang
Unit No: 49

Serial #: 8898

Outside

Press @RunDepth: 60.98 psig @ 3634.00 ft (KB)
Capacity: 8000.00 psig
Start Date: 2013.10.09 End Date: 2013.10.10 Last Calib.: 2013.10.10
Start Time: 21:12:11 End Time: 04:58:30 Time On Btm: 2013.10.10 @ 00:02:00
Time Off Btm: 2013.10.10 @ 03:07:30

TEST COMMENT: B.O.B. in 12 mins.
Weak surface bow back died in 30 mins
B.O.B. in 13 mins.
Weak surface blow back died in 48 mins.



PRESSURE SUMMARY

Time (Min.)	Pressure (psig)	Temp (deg F)	Annotation
0	1792.16	103.86	Initial Hydro-static
1	21.78	103.17	Open To Flow (1)
31	39.87	108.53	Shut-In(1)
74	352.26	108.92	End Shut-In(1)
75	46.56	108.83	Open To Flow (2)
121	60.98	110.82	Shut-In(2)
185	318.58	111.59	End Shut-In(2)
186	1753.29	112.01	Final Hydro-static

Recovery

Length (ft)	Description	Volume (bbl)
40.00	5%G 35%O 60%M	0.56
60.00	25%G 40%O 5%W 30%M	0.84
0.00	380 GIP	0.00

Gas Rates

	Choke (inches)	Pressure (psig)	Gas Rate (Mcf/d)

* Recovery from multiple tests



**TRILOBITE
TESTING, INC.**

DRILL STEM TEST REPORT

FLUID SUMMARY

Tomlinson Operating

25-13s-20w-Ellis Co.

7154 W.State St #302
Boise ID, 83714

Younger #1

Job Ticket: 54838

DST#: 2

ATTN: Bob O'Dell

Test Start: 2013.10.09 @ 21:12:10

Mud and Cushion Information

Mud Type: Gel Chem

Cushion Type:

Oil API:

deg API

Mud Weight: 9.00 lb/gal

Cushion Length:

ft

Water Salinity:

ppm

Viscosity: 58.00 sec/qt

Cushion Volume:

bbbl

Water Loss: 5.80 in³

Gas Cushion Type:

Resistivity: ohm.m

Gas Cushion Pressure:

psig

Salinity: 1500.00 ppm

Filter Cake: 1.00 inches

Recovery Information

Recovery Table

Length ft	Description	Volume bbbl
40.00	5%G 35%O 60%M	0.561
60.00	25%G 40%O 5%W 30%M	0.842
0.00	380 GIP	0.000

Total Length: 100.00 ft

Total Volume: 1.403 bbl

Num Fluid Samples: 0

Num Gas Bombs: 0

Serial #:

Laboratory Name:

Laboratory Location:

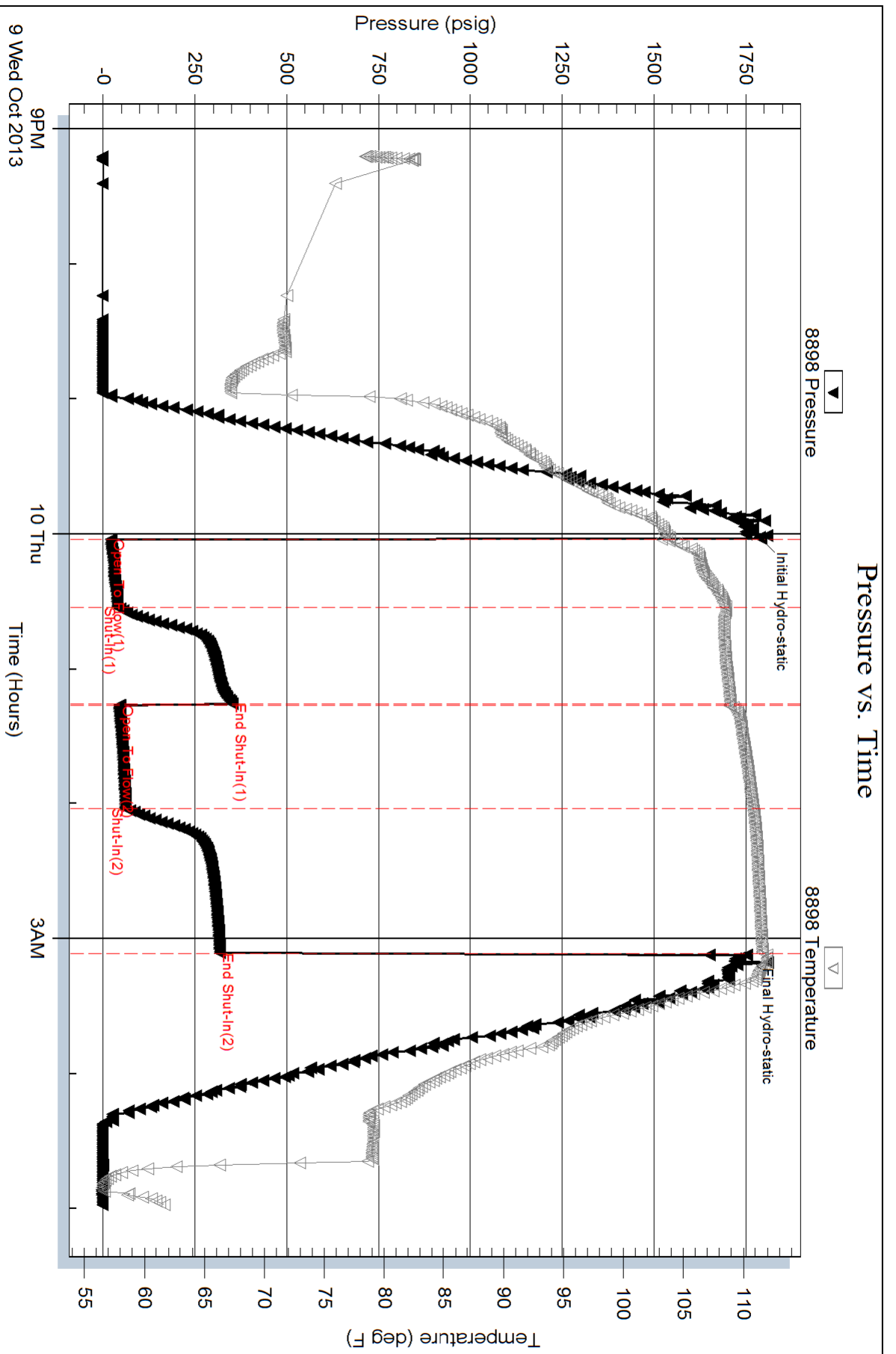
Recovery Comments:

Serial #: 8898

Outside Tortinson Operating

Younger #1

DST Test Number: 2



Trilobite Testing, Inc

Ref. No: 54838

Printed: 2013.10.10 @ 07:45:02