



TRILOBITE TESTING, INC.

DRILL STEM TEST REPORT

Tomlinson Operating
 7154 W.State St #302
 Boise, ID 83714
 ATTN: Bob O'Dell

25-13s-20w Ellis Co.
Younger #1
 Job Ticket: 55758 **DST#: 3**
 Test Start: 2013.10.10 @ 21:25:00

GENERAL INFORMATION:

Formation: **Arbuckle**
 Deviated: No Whipstock: ft (KB)
 Time Tool Opened: 00:16:30
 Time Test Ended: 07:23:19
 Interval: **3812.00 ft (KB) To 3831.00 ft (KB) (TVD)**
 Total Depth: 3831.00 ft (KB) (TVD)
 Hole Diameter: 7.88 inches Hole Condition: Fair
 Test Type: Conventional Bottom Hole (Reset)
 Tester: Brannan L
 Unit No: 49
 Reference Elevations: 2206.00 ft (KB)
 2193.00 ft (CF)
 KB to GR/CF: 13.00 ft

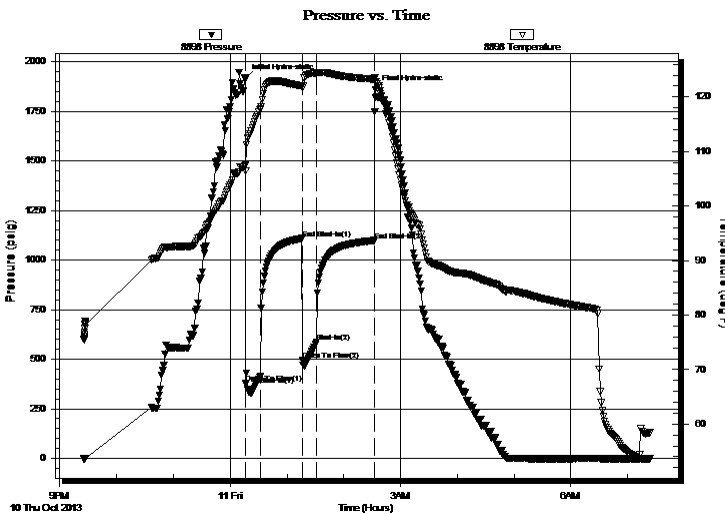
Serial #: 8898

Outside

Press @ Run Depth: 586.38 psig @ 3828.00 ft (KB) Capacity: 8000.00 psig
 Start Date: 2013.10.10 End Date: 2013.10.11 Last Calib.: 2013.10.11
 Start Time: 21:25:01 End Time: 07:23:19 Time On Btm: 2013.10.11 @ 00:16:20
 Time Off Btm: 2013.10.11 @ 02:33:09

TEST COMMENT: 15- IF- BOB 2mins
 45- IS- No blow
 15- FF- BOB 1min
 60- FSI- No blow

PRESSURE SUMMARY



Time (Min.)	Pressure (psig)	Temp (deg F)	Annotation
0	1917.66	107.50	Initial Hydro-static
1	380.36	106.52	Open To Flow (1)
16	412.93	117.81	Shut-In(1)
60	1109.48	121.97	End Shut-In(1)
60	496.35	121.64	Open To Flow (2)
75	586.38	124.42	Shut-In(2)
137	1097.86	123.25	End Shut-In(2)
137	1859.53	122.53	Final Hydro-static

Recovery

Length (ft)	Description	Volume (bbl)
190.00	OW, 5%O 95%W	2.67
250.00	GOW, 15%G 30%O 55%W	3.51
860.00	GOMW, 5%G 25%O 25%M 45%W	12.06
0.00	25' GIP	0.00

* Recovery from multiple tests

Gas Rates

Choke (inches)	Pressure (psig)	Gas Rate (Mcf/d)



**TRILOBITE
TESTING, INC.**

DRILL STEM TEST REPORT

FLUID SUMMARY

Tomlinson Operating

25-13s-20w Ellis Co.

7154 W.State St #302
Boise, ID 83714

Younger #1

Job Ticket: 55758

DST#: 3

ATTN: Bob O'Dell

Test Start: 2013.10.10 @ 21:25:00

Mud and Cushion Information

Mud Type: Gel Chem

Cushion Type:

Oil API:

deg API

Mud Weight: 9.00 lb/gal

Cushion Length:

ft

Water Salinity:

8500 ppm

Viscosity: 51.00 sec/qt

Cushion Volume:

bbbl

Water Loss: 5.99 in³

Gas Cushion Type:

Resistivity: ohm.m

Gas Cushion Pressure:

psig

Salinity: 1300.00 ppm

Filter Cake: 1.00 inches

Recovery Information

Recovery Table

Length ft	Description	Volume bbbl
190.00	OW, 5%O 95%W	2.665
250.00	GOW, 15%G 30%O 55%W	3.507
860.00	GOMW, 5%G 25%O 25%M 45%W	12.064
0.00	25' GIP	0.000

Total Length: 1300.00 ft Total Volume: 18.236 bbl

Num Fluid Samples: 0

Num Gas Bombs: 0

Serial #:

Laboratory Name:

Laboratory Location:

Recovery Comments:

Serial #: 8898

Outside Tortinson Operating

Younger #1

DST Test Number: 3

Pressure vs. Time

