



**TRILOBITE
TESTING, INC.**

DRILL STEM TEST REPORT

Vincent Oil Corporation
155 N Market Ste 700
Wichita, KS 67202
ATTN: Jim Hall

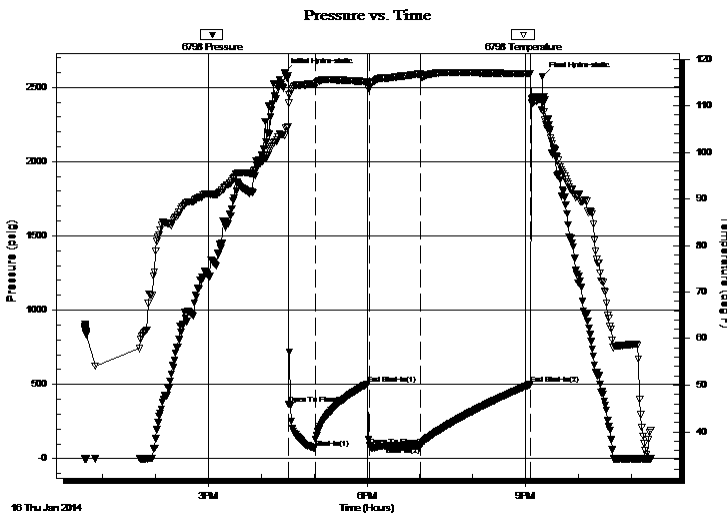
27-28S-23W Ford
Hawes Ranch 3-27
Job Ticket: 51919 **DST#: 3**
Test Start: 2014.01.16 @ 12:39:49

GENERAL INFORMATION:

Formation: **Mississippi**
Deviated: No Whipstock: ft (KB)
Time Tool Opened: 16:31:34
Time Test Ended: 23:22:49
Interval: **5164.00 ft (KB) To 5195.00 ft (KB) (TVD)**
Total Depth: 5195.00 ft (KB) (TVD)
Hole Diameter: 7.88 inches Hole Condition: Good
Test Type: Conventional Bottom Hole (Reset)
Tester: Leal Cason
Unit No: 74
Reference Elevations: 2514.00 ft (KB)
2503.00 ft (CF)
KB to GR/CF: 11.00 ft

Serial #: 6798 Inside
Press @ Run Depth: 82.86 psig @ 5165.00 ft (KB) Capacity: 8000.00 psig
Start Date: 2014.01.16 End Date: 2014.01.16 Last Calib.: 2014.01.16
Start Time: 12:39:50 End Time: 23:22:49 Time On Btm: 2014.01.16 @ 16:26:49
Time Off Btm: 2014.01.16 @ 21:19:04

TEST COMMENT: IF: Strong Blow , BOB in 15 seconds, GTS in 4 minutes, Gauged Gas & Caught Sample
IS: 1/2 inch Blow Back
FF: Strong Blow , BOB & GTS Immediate, Gauged Gas
FS: Weak Surface Blow Back



PRESSURE SUMMARY

Time (Min.)	Pressure (psig)	Temp (deg F)	Annotation
0	2600.28	103.66	Initial Hydro-static
5	367.79	110.52	Open To Flow (1)
35	71.34	114.75	Shut-In(1)
95	505.77	115.15	End Shut-In(1)
97	86.43	113.88	Open To Flow (2)
154	82.86	116.83	Shut-In(2)
279	502.17	116.94	End Shut-In(2)
293	2570.10	111.08	Final Hydro-static

Recovery

Length (ft)	Description	Volume (bbl)
0.00	4992 GIP	0.00
150.00	GMCO 10%G 20%M 70%O	2.10

Gas Rates

	Choke (inches)	Pressure (psig)	Gas Rate (Mcf/d)
First Gas Rate	0.50	65.00	535.61
Last Gas Rate	0.25	22.00	57.74
Max. Gas Rate	0.50	65.00	535.61

* Recovery from multiple tests



**TRILOBITE
TESTING, INC.**

DRILL STEM TEST REPORT

FLUID SUMMARY

Vincent Oil Corporation

27-28S-23W Ford

155 N Market Ste 700
Wichita, KS 67202

Hawes Ranch 3-27

Job Ticket: 51919

DST#: 3

ATTN: Jim Hall

Test Start: 2014.01.16 @ 12:39:49

Mud and Cushion Information

Mud Type: Gel Chem

Cushion Type:

Oil API:

deg API

Mud Weight: 9.00 lb/gal

Cushion Length:

ft

Water Salinity:

ppm

Viscosity: 54.00 sec/qt

Cushion Volume:

bbbl

Water Loss: 8.78 in³

Gas Cushion Type:

Resistivity: ohm.m

Gas Cushion Pressure:

psig

Salinity: 8000.00 ppm

Filter Cake: 0.02 inches

Recovery Information

Recovery Table

Length ft	Description	Volume bbl
0.00	4992 GIP	0.000
150.00	GMCO 10%G 20%M 70%O	2.104

Total Length: 150.00 ft Total Volume: 2.104 bbl

Num Fluid Samples: 0

Num Gas Bombs: 0

Serial #:

Laboratory Name:

Laboratory Location:

Recovery Comments:



**TRILOBITE
TESTING, INC.**

DRILL STEM TEST REPORT

GAS RATES

Vincent Oil Corporation

27-28S-23W Ford

155 N Market Ste 700
Wichita, KS 67202

Hawes Ranch 3-27

Job Ticket: 51919

DST#: 3

ATTN: Jim Hall

Test Start: 2014.01.16 @ 12:39:49

Gas Rates Information

Temperature: 59 (deg F)
Relative Density: 0.65
Z Factor: 0.8

Gas Rates Table

Flow Period	Elapsed Time	Choke (inches)	Pressure (psig)	Gas Rate (Mcf/d)
1	10	0.50	65.00	535.61
1	20	0.50	32.00	313.00
1	30	0.50	12.00	178.09
2	10	0.25	36.00	79.95
2	20	0.25	38.00	83.13
2	30	0.25	34.00	76.78
2	40	0.25	30.00	70.44
2	50	0.25	25.00	62.50
2	60	0.25	22.00	57.74

