



**TRILOBITE
TESTING, INC.**

DRILL STEM TEST REPORT

Russell Oil Inc

21-17s-14w Russell

PO Box 8050
Edmond OK 73083

Connor #13

Job Ticket: 56234

DST#: 2

ATTN: Leroy Holt III, Ste

Test Start: 2014.02.02 @ 05:35:59

GENERAL INFORMATION:

Formation: **Toronto / LKC**

Deviated: No Whipstock: ft (KB)

Time Tool Opened: 07:51:24

Time Test Ended: 13:34:23

Test Type: Conventional Bottom Hole (Reset)

Tester: Ray Schwager

Unit No: 70

Interval: 3055.00 ft (KB) To 3150.00 ft (KB) (TVD)

Reference Elevations: 1907.00 ft (KB)

Total Depth: 3150.00 ft (KB) (TVD)

1898.00 ft (CF)

Hole Diameter: 7.85 inches Hole Condition: Fair

KB to GR/CF: 9.00 ft

Serial #: 8369

Inside

Press @ Run Depth: 113.20 psig @ 3061.00 ft (KB)

Capacity: 8000.00 psig

Start Date: 2014.02.02

End Date:

2014.02.02

Last Calib.:

2014.02.02

Start Time: 05:35:59

End Time:

13:34:23

Time On Btm:

2014.02.02 @ 07:48:09

Time Off Btm:

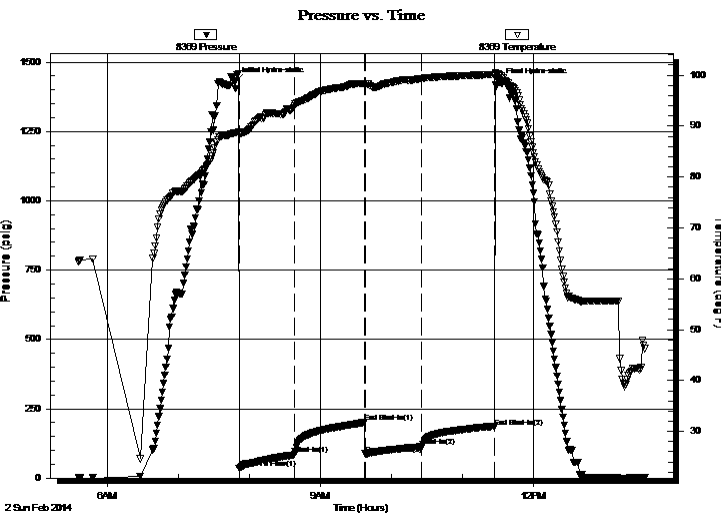
2014.02.02 @ 11:31:23

TEST COMMENT: 45-IFP-w k to strg in 5min

60-ISIP-no bl

45-FFP-w k to a fr bl 1/4" to 5 1/2" bl

60-FSIP-no bl



PRESSURE SUMMARY

Time (Min.)	Pressure (psig)	Temp (deg F)	Annotation
0	1430.23	88.68	Initial Hydro-static
4	34.74	88.28	Open To Flow (1)
50	84.95	94.08	Shut-In(1)
110	201.17	98.36	End Shut-In(1)
110	87.38	98.31	Open To Flow (2)
158	113.20	99.34	Shut-In(2)
219	183.10	100.15	End Shut-In(2)
224	1425.10	99.97	Final Hydro-static

Recovery

Length (ft)	Description	Volume (bbl)
0.00	55' GIP	0.00
65.00	Mud	0.91
120.00	SGCMW 5%G40%M55%W	1.68

* Recovery from multiple tests

Gas Rates

Choke (inches)	Pressure (psig)	Gas Rate (Mcf/d)



**TRILOBITE
TESTING, INC.**

DRILL STEM TEST REPORT

FLUID SUMMARY

Russell Oil Inc

21-17s-14w Russell

PO Box 8050
Edmond OK 73083

Connor #13

Job Ticket: 56234

DST#: 2

ATTN: Leroy Holt III, Ste

Test Start: 2014.02.02 @ 05:35:59

Mud and Cushion Information

Mud Type: Gel Chem

Cushion Type:

Oil API:

deg API

Mud Weight: 9.00 lb/gal

Cushion Length:

ft

Water Salinity:

75000 ppm

Viscosity: 57.00 sec/qt

Cushion Volume:

bbbl

Water Loss: 10.35 in³

Gas Cushion Type:

Resistivity: ohm.m

Gas Cushion Pressure:

psig

Salinity: 11000.00 ppm

Filter Cake: 1.00 inches

Recovery Information

Recovery Table

Length ft	Description	Volume bbbl
0.00	55' GIP	0.000
65.00	Mud	0.912
120.00	SGCMW 5%G40%M55%W	1.683

Total Length: 185.00 ft Total Volume: 2.595 bbl

Num Fluid Samples: 0

Num Gas Bombs: 0

Serial #:

Laboratory Name:

Laboratory Location:

Recovery Comments: RW .14@50F

