



TRILOBITE TESTING, INC

DRILL STEM TEST REPORT

Russell Oil Inc

21-17s-14w Russell

PO Box 8050
Edmond OK 73083

Connor #13

Job Ticket: 56236

DST#: 4

ATTN: Leroy Holt III, Ste

Test Start: 2014.02.04 @ 13:45:46

GENERAL INFORMATION:

Formation: **LKC I-L**

Deviated: No Whipstock: ft (KB)

Time Tool Opened: 15:50:56

Time Test Ended: 22:41:54

Test Type: Conventional Bottom Hole (Reset)

Tester: Ray Schwager

Unit No: 70

Interval: 3280.00 ft (KB) To 3341.00 ft (KB) (TVD)

Reference Elevations: 1907.00 ft (KB)

Total Depth: 3341.00 ft (KB) (TVD)

1898.00 ft (CF)

Hole Diameter: 7.85 inches Hole Condition: Fair

KB to GR/CF: 9.00 ft

Serial #: 8369

Inside

Press@RunDepth: 41.41 psig @ 3285.00 ft (KB)

Capacity: 8000.00 psig

Start Date: 2014.02.04

End Date:

2014.02.04

Last Calib.:

2014.02.04

Start Time: 13:45:46

End Time:

22:41:54

Time On Btm:

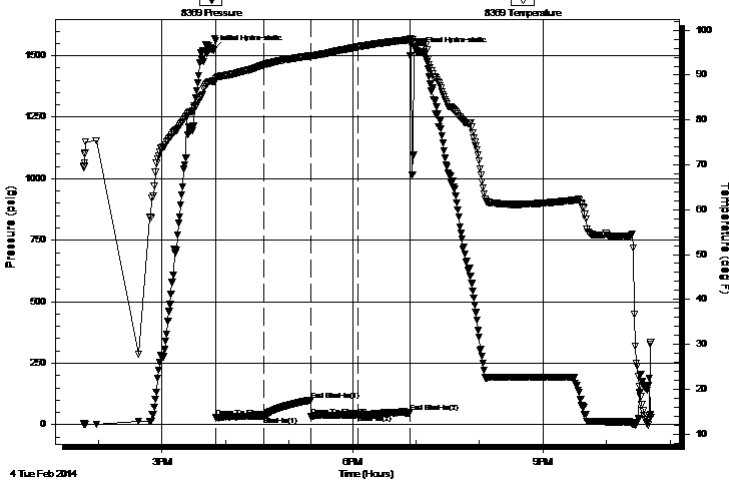
2014.02.04 @ 15:48:26

Time Off Btm:

2014.02.04 @ 19:02:40

TEST COMMENT: 45-IFP-w k to a fr bl 1/2" to 5"bl
45-ISIP-no bl
45-FFP-w k to a fr bl 1" to 5"bl
45-FSIP-no bl

Pressure vs. Time



PRESSURE SUMMARY

Time (Min.)	Pressure (psig)	Temp (deg F)	Annotation
0	1522.95	88.62	Initial Hydro-static
3	29.79	89.12	Open To Flow (1)
48	35.64	92.28	Shut-In(1)
92	99.73	94.26	End Shut-In(1)
93	32.93	94.24	Open To Flow (2)
137	41.41	96.31	Shut-In(2)
186	50.26	97.89	End Shut-In(2)
195	1515.06	97.38	Final Hydro-static

Recovery

Length (ft)	Description	Volume (bbl)
0.00	935'GIP	0.00
55.00	OCM 15%O85%M	0.77

Gas Rates

	Choke (inches)	Pressure (psig)	Gas Rate (Mcf/d)

* Recovery from multiple tests



**TRILOBITE
TESTING, INC**

DRILL STEM TEST REPORT

FLUID SUMMARY

Russell Oil Inc

21-17s-14w Russell

PO Box 8050
Edmond OK 73083

Connor #13

Job Ticket: 56236

DST#: 4

ATTN: Leroy Holt III, Ste

Test Start: 2014.02.04 @ 13:45:46

Mud and Cushion Information

Mud Type: Gel Chem

Cushion Type:

Oil API:

deg API

Mud Weight: 8.00 lb/gal

Cushion Length:

ft

Water Salinity:

ppm

Viscosity: 53.00 sec/qt

Cushion Volume:

bbbl

Water Loss: 10.36 in³

Gas Cushion Type:

Resistivity: ohm.m

Gas Cushion Pressure:

psig

Salinity: 10000.00 ppm

Filter Cake: 1.00 inches

Recovery Information

Recovery Table

Length ft	Description	Volume bbl
0.00	935'GIP	0.000
55.00	OCM 15%O85%M	0.772

Total Length: 55.00 ft Total Volume: 0.772 bbl

Num Fluid Samples: 0

Num Gas Bombs: 0

Serial #:

Laboratory Name:

Laboratory Location:

Recovery Comments: hit bridge going to bottom w /tool @ approx 3100 ft , 3140ft , 3280ft
then slid tool approx 5ft to bottom after opening tool

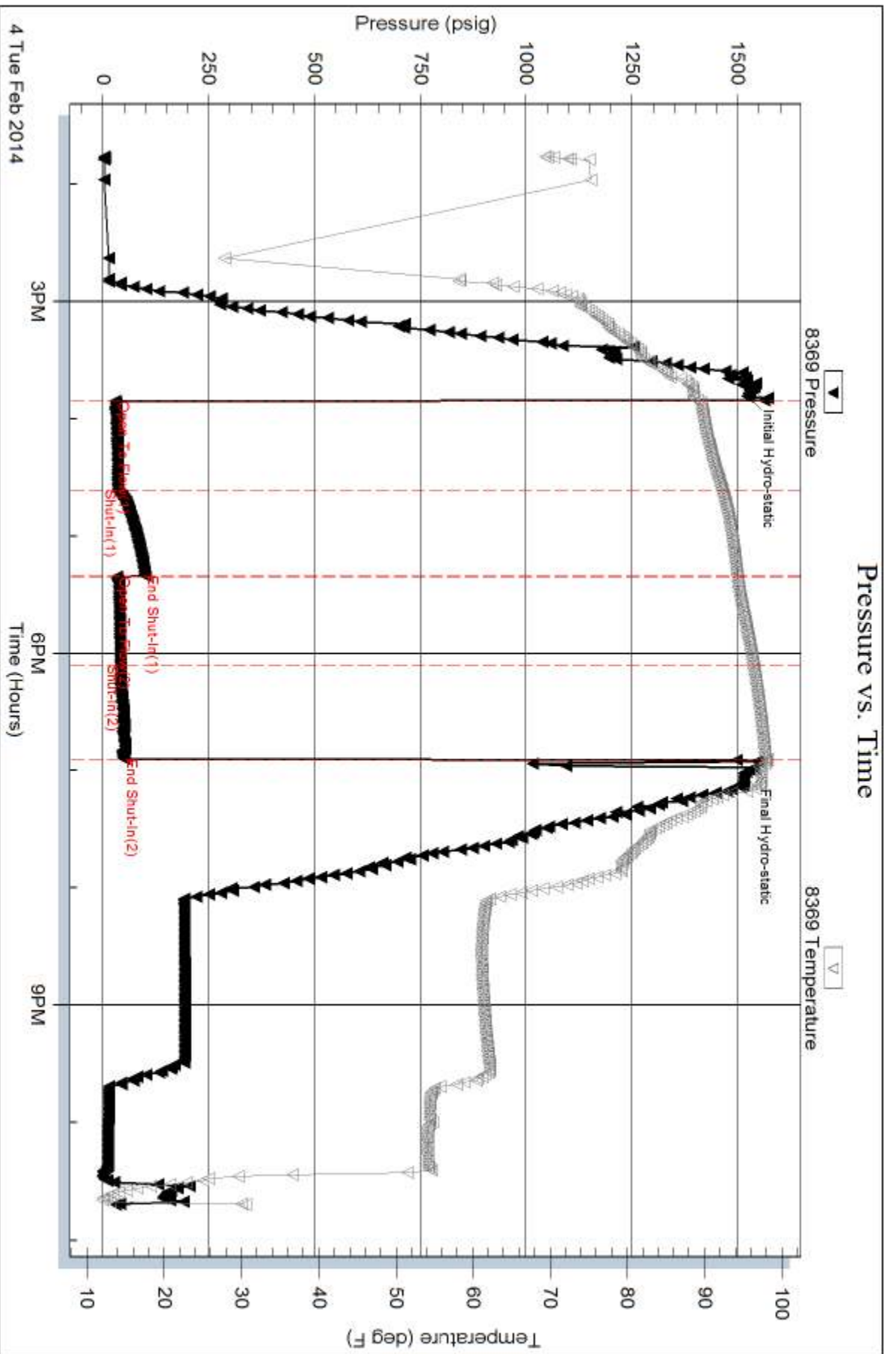
Serial #: 8369

Inside

Russell Oil Inc

Connor #13

DST Test Number: 4



Triobite Testing, Inc

Ref. No: 56236

Printed: 2014.02.05 @ 07:46:26