



**TRILOBITE
TESTING, INC**

DRILL STEM TEST REPORT

Russell Oil Inc

21-17s-14w Russell

PO Box 8050
Edmond OK 73083

Connor #13

Job Ticket: 56237

DST#: 5

ATTN: Leroy Holt III, Ste

Test Start: 2014.02.05 @ 11:25:47

GENERAL INFORMATION:

Formation: **Arbuckle**

Deviated: No Whipstock: ft (KB)

Time Tool Opened: 14:05:57

Time Test Ended: 19:43:41

Test Type: Conventional Bottom Hole (Reset)

Tester: Ray Schwager

Unit No: 70

Interval: 3340.00 ft (KB) To 3400.00 ft (KB) (TVD)

Reference Elevations: 1907.00 ft (KB)

Total Depth: 3400.00 ft (KB) (TVD)

1898.00 ft (CF)

Hole Diameter: 7.85 inches Hole Condition: Fair

KB to GR/CF: 9.00 ft

Serial #: 8369

Inside

Press@RunDepth: 173.61 psig @ 3344.00 ft (KB)

Capacity: 8000.00 psig

Start Date: 2014.02.05

End Date:

2014.02.05

Last Calib.:

2014.02.05

Start Time: 11:25:47

End Time:

19:43:41

Time On Btm:

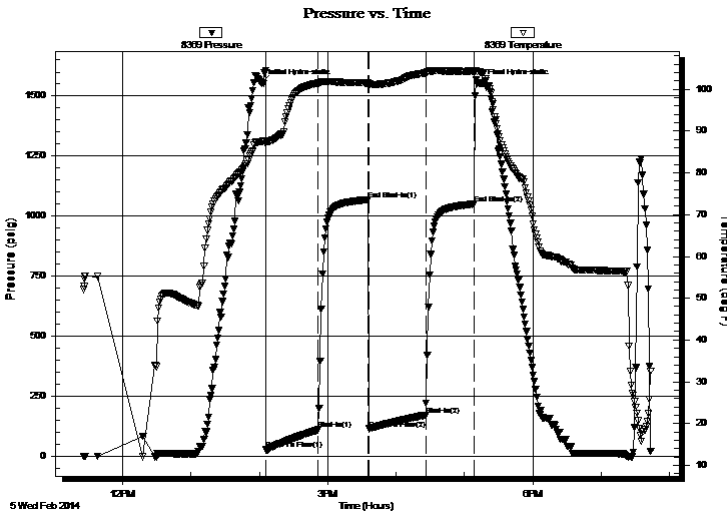
2014.02.05 @ 14:02:27

Time Off Btm:

2014.02.05 @ 17:14:41

TEST COMMENT: 45-IFP-w k to strg in 9min
45-ISIP-1/4"bl bk
45-FFP-w k to a gd bl 1"to 8"bl
45-FSIP-1/4"bl bk

PRESSURE SUMMARY



Time (Min.)	Pressure (psig)	Temp (deg F)	Annotation
0	1553.83	87.49	Initial Hydro-static
4	29.51	86.95	Open To Flow (1)
50	112.37	101.46	Shut-In(1)
93	1069.38	101.50	End Shut-In(1)
94	116.06	101.21	Open To Flow (2)
144	173.61	103.94	Shut-In(2)
186	1050.73	104.34	End Shut-In(2)
193	1553.22	104.07	Final Hydro-static

Recovery

Length (ft)	Description	Volume (bbl)
0.00	1025'GIP	0.00
90.00	CO	1.26
145.00	MGO 10%G40%M50%O	2.03
125.00	OCMW 10%O15%M75%W	1.75

Gas Rates

	Choke (inches)	Pressure (psig)	Gas Rate (Mcf/d)

* Recovery from multiple tests



**TRILOBITE
TESTING, INC**

DRILL STEM TEST REPORT

FLUID SUMMARY

Russell Oil Inc

21-17s-14w Russell

PO Box 8050
Edmond OK 73083

Connor #13

Job Ticket: 56237

DST#: 5

ATTN: Leroy Holt III, Ste

Test Start: 2014.02.05 @ 11:25:47

Mud and Cushion Information

Mud Type: Gel Chem

Cushion Type:

Oil API:

34 deg API

Mud Weight: 9.00 lb/gal

Cushion Length:

ft

Water Salinity:

27000 ppm

Viscosity: 56.00 sec/qt

Cushion Volume:

bbbl

Water Loss: 8.75 in³

Gas Cushion Type:

Resistivity: ohm.m

Gas Cushion Pressure:

psig

Salinity: 10200.00 ppm

Filter Cake: 1.00 inches

Recovery Information

Recovery Table

Length ft	Description	Volume bbbl
0.00	1025'GIP	0.000
90.00	CO	1.262
145.00	MGO 10%G40%M50%O	2.034
125.00	OCMW 10%O15%M75%W	1.753

Total Length: 360.00 ft Total Volume: 5.049 bbl

Num Fluid Samples: 0

Num Gas Bombs: 0

Serial #:

Laboratory Name:

Laboratory Location:

Recovery Comments: RW .35 @ 50F

