



DRILL STEM TEST REPORT

Prepared For: **FG Holl Company LLC**

9431 East Central
Suite 100
Wichita, Kansas 67206+2563

ATTN: Ryan Greenbaum

Foster Trust A #1-1

1/21S/16W/Pawnee

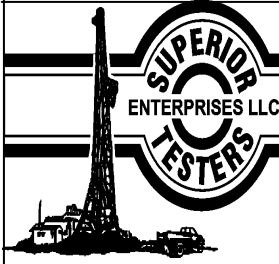
Start Date: 2014.04.05 @ 16:29:00

End Date: 2014.04.05 @ 23:11:00

Job Ticket #: 18274 DST #: 5

Superior Testers Enterprises LLC
PO Box 138 Great Bend KS 67530
1-800-792-6902

Printed: 2014.04.05 @ 23:38:22



DRILL STEM TEST REPORT

FG Holl Company LLC
 9431 East Central
 Suite 100
 Wichita, Kansas 67206+2563
 ATTN: Ryan Greenbaum

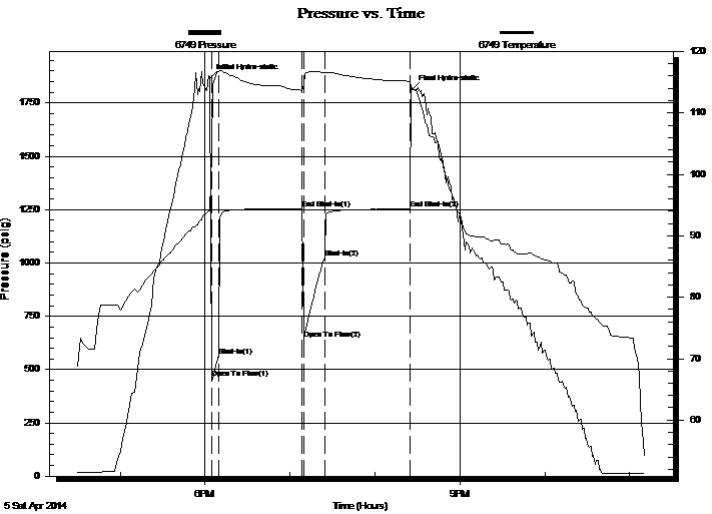
1/21S/16W/Pawnee
Foster Trust A #1-1
 Job Ticket: 18274 **DST#: 5**
 Test Start: 2014.04.05 @ 16:29:00

GENERAL INFORMATION:

Formation: Arbuckle	Test Type: Conventional Bottom Hole (Initial)
Deviated: No Whipstock: ft (KB)	Tester: Ken Swinney
Time Tool Opened: 18:04:30	Unit No: 3325 Great Bend/32
Time Test Ended: 23:11:00	Reference Elevations: 1981.00 ft (KB)
Interval: 3800.00 ft (KB) To 3810.00 ft (KB) (TVD)	1973.00 ft (CF)
Total Depth: 3810.00 ft (KB) (TVD)	KB to GR/CF: 8.00 ft
Hole Diameter: 7.80 inches Hole Condition: Fair	

Serial #: 6749	Inside			
Press@RunDepth: 1025.70 psig @ 3806.00 ft (KB)	Capacity: 5000.00 psig			
Start Date: 2014.04.05	End Date: 2014.04.05	Last Calib.: 2014.04.05		
Start Time: 16:29:00	End Time: 23:11:00	Time On Btm: 2014.04.05 @ 18:03:30		
		Time Off Btm: 2014.04.05 @ 20:26:00		

TEST COMMENT: 1ST Open 5 Minutes/Strong blow /Blow built to bottom of bucket in 20 seconds
 1ST Shut In 60 Minutes/Blow back built to bottom of bucket in 5 minutes
 2ND Open 15 Minutes/Stong blow /Blow built to bottom of bucket in 30 seconds
 2ND Shut In 60 Minutes/Blow back built to bottom of bucket in 18 minutes



PRESSURE SUMMARY

Time (Min.)	Pressure (psig)	Temp (deg F)	Annotation
0	1865.02	94.06	Initial Hydro-static
1	458.81	103.56	Open To Flow (1)
6	565.44	116.76	Shut-In(1)
65	1254.15	113.69	End Shut-In(1)
66	641.43	114.68	Open To Flow (2)
81	1025.70	116.60	Shut-In(2)
141	1252.78	115.17	End Shut-In(2)
143	1812.17	114.03	Final Hydro-static

Recovery

Length (ft)	Description	Volume (bbl)
124.00	Oil cut Gassy Mud	1.74
0.00	Oil 10% Gas 10% Mud 80%	0.00
930.00	Slightly gassy w ater w ith show of oil	13.05
0.00	Gas 5% Water 95%	0.00
1054.00	Slightly gassy w ater	14.78
0.00	Gas 2% Water 98%	0.00

Gas Rates

	Choke (inches)	Pressure (psig)	Gas Rate (Mcf/d)



DRILL STEM TEST REPORT

FG Holl Company LLC

1/21S/16W/Pawnee

9431 East Central
Suite 100
Wichita, Kansas 67206+2563
ATTN: Ryan Greenbaum

Foster Trust A #1-1

Job Ticket: 18274

DST#: 5

Test Start: 2014.04.05 @ 16:29:00

GENERAL INFORMATION:

Formation: **Arbuckle**

Deviated: No Whipstock: ft (KB)

Time Tool Opened: 18:04:30

Time Test Ended: 23:11:00

Test Type: Conventional Bottom Hole (Initial)

Tester: Ken Swinney

Unit No: 3325 Great Bend/32

Interval: **3800.00 ft (KB) To 3810.00 ft (KB) (TVD)**

Reference Elevations: 1981.00 ft (KB)

Total Depth: 3810.00 ft (KB) (TVD)

1973.00 ft (CF)

Hole Diameter: 7.80 inches Hole Condition: Fair

KB to GR/CF: 8.00 ft

Serial #: **8938**

Outside

Press@RunDepth: 1251.75 psig @ 3807.00 ft (KB)

Capacity: 5000.00 psig

Start Date: 2014.04.05

End Date: 2014.04.05

Last Calib.: 2014.04.05

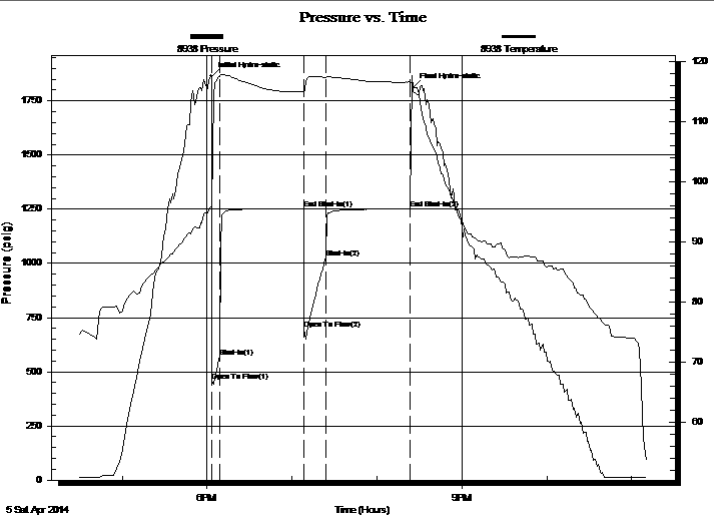
Start Time: 16:29:00

End Time: 23:10:30

Time On Btm: 2014.04.05 @ 18:03:00

Time Off Btm: 2014.04.05 @ 20:25:30

TEST COMMENT: 1ST Open 5 Minutes/Strong blow /Blow built to bottom of bucket in 20 seconds
1ST Shut In 60 Minutes/Blow back built to bottom of bucket in 5 minutes
2ND Open 15 Minutes/Stong blow /Blow built to bottom of bucket in 30 seconds
2ND Shut In 60 Minutes/Blow back built to bottom of bucket in 18 minutes



PRESSURE SUMMARY

Time (Min.)	Pressure (psig)	Temp (deg F)	Annotation
0	1863.82	96.06	Initial Hydro-static
1	455.86	95.63	Open To Flow (1)
6	566.21	117.60	Shut-In(1)
65	1253.14	115.03	End Shut-In(1)
66	697.36	114.72	Open To Flow (2)
81	1025.45	117.44	Shut-In(2)
141	1251.75	116.62	End Shut-In(2)
143	1811.00	115.28	Final Hydro-static

Recovery

Length (ft)	Description	Volume (bbl)
124.00	Oil cut Gassy Mud	1.74
0.00	Oil 10% Gas 10% Mud 80%	0.00
930.00	Slightly gassy water with show of oil	13.05
0.00	Gas 5% Water 95%	0.00
1054.00	Slightly gassy water	14.78
0.00	Gas 2% Water 98%	0.00

Gas Rates

Choke (inches)	Pressure (psig)	Gas Rate (Mcf/d)



DRILL STEM TEST REPORT

TOOL DIAGRAM

FG Holl Company LLC

1/21S/16W/Pawnee

9431 East Central
Suite 100
Wichita, Kansas 67206+2563
ATTN: Ryan Greenbaum

Foster Trust A #1-1

Job Ticket: 18274

DST#: 5

Test Start: 2014.04.05 @ 16:29:00

Tool Information

Drill Pipe:	Length: 3803.00 ft	Diameter: 3.80 inches	Volume: 53.35 bbl	Tool Weight: 2000.00 lb
Heavy Wt. Pipe:	Length: 0.00 ft	Diameter: 0.00 inches	Volume: 0.00 bbl	Weight set on Packer: 20000.00 lb
Drill Collar:	Length: 0.00 ft	Diameter: 0.00 inches	Volume: 0.00 bbl	Weight to Pull Loose: 80000.00 lb
			<u>Total Volume: 53.35 bbl</u>	Tool Chased 0.00 ft
Drill Pipe Above KB:	31.00 ft			String Weight: Initial 62000.00 lb
Depth to Top Packer:	3800.00 ft			Final 70000.00 lb
Depth to Bottom Packer:	ft			
Interval between Packers:	10.00 ft			
Tool Length:	38.00 ft			
Number of Packers:	1	Diameter: 6.75 inches		

Tool Comments:

Tool Description	Length (ft)	Serial No.	Position	Depth (ft)	Accum. Lengths
------------------	-------------	------------	----------	------------	----------------

Shut-In Tool	5.00			3777.00	
Hydraulic tool	5.00			3782.00	
Jars	6.00			3788.00	
Safety Joint	2.00			3790.00	
Top Packer	5.00			3795.00	
Packer	5.00			3800.00	28.00 Bottom Of Top Packer
Anchor	5.00			3805.00	
Recorder	1.00	6749	Inside	3806.00	
Recorder	1.00	8938	Outside	3807.00	
Bullnose	3.00			3810.00	10.00 Anchor Tool
Total Tool Length:	38.00				



DRILL STEM TEST REPORT

FLUID SUMMARY

FG Holl Company LLC

1/21S/16W/Pawnee

9431 East Central
Suite 100
Wichita, Kansas 67206+2563
ATTN: Ryan Greenbaum

Foster Trust A #1-1

Job Ticket: 18274

DST#: 5

Test Start: 2014.04.05 @ 16:29:00

Mud and Cushion Information

Mud Type: Gel Chem
Mud Weight: 9.00 lb/gal
Viscosity: 68.00 sec/qt
Water Loss: 9.20 in³
Resistivity: ohm.m
Salinity: 8700.00 ppm
Filter Cake: 1.00 inches

Cushion Type:
Cushion Length: ft
Cushion Volume: bbl
Gas Cushion Type:
Gas Cushion Pressure: psig

Oil API: deg API
Water Salinity: ppm

Recovery Information

Recovery Table

Length ft	Description	Volume bbl
124.00	Oil cut Gassy Mud	1.739
0.00	Oil 10% Gas 10% Mud 80%	0.000
930.00	Slightly gassy water with show of oil	13.045
0.00	Gas 5% Water 95%	0.000
1054.00	Slightly gassy water	14.785
0.00	Gas 2% Water 98%	0.000
0.00	Recov. Chlorides 32000 ppm	0.000

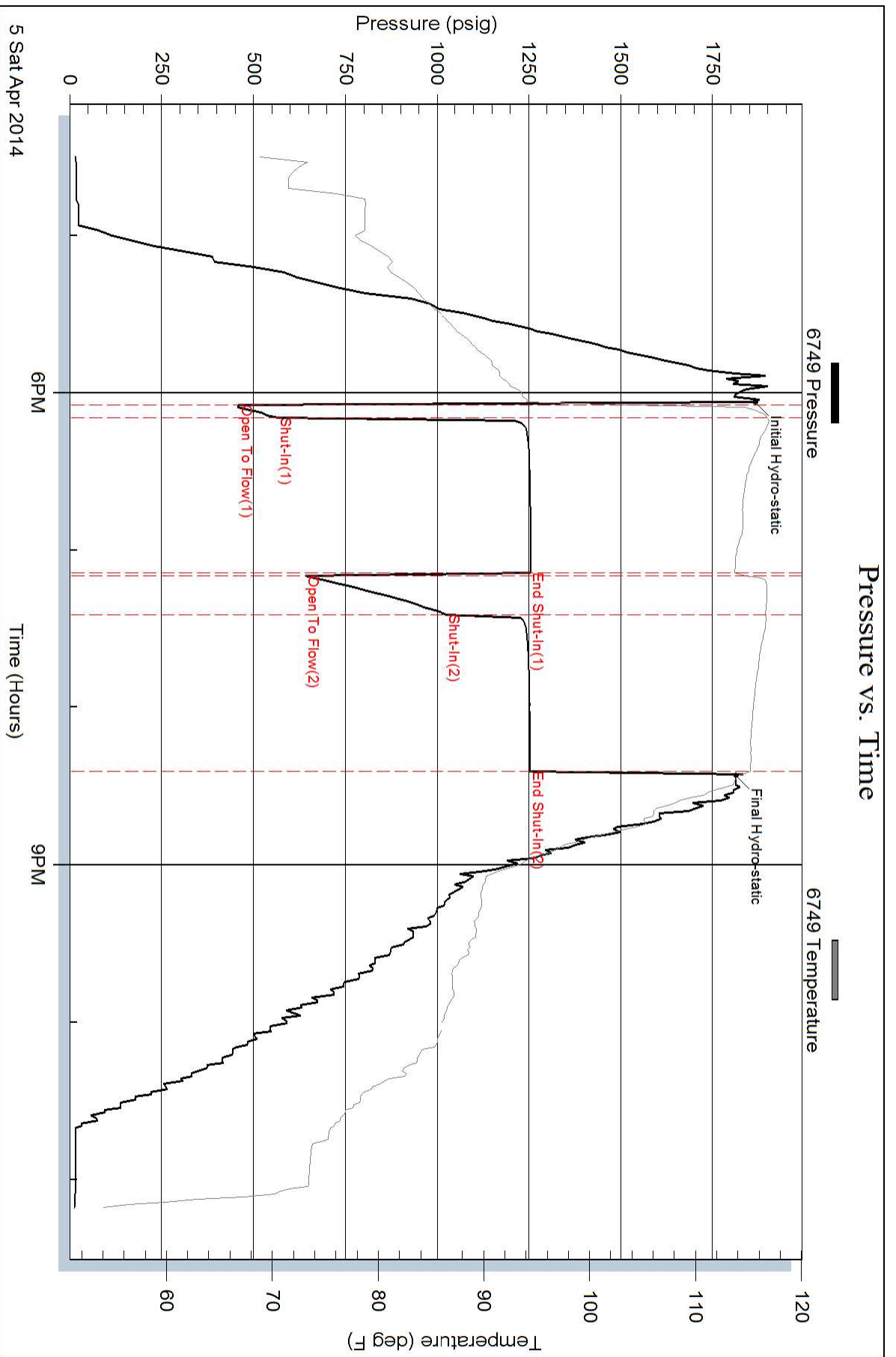
Total Length: 2108.00 ft Total Volume: 29.569 bbl

Num Fluid Samples: 0 Num Gas Bombs: 0 Serial #:

Laboratory Name: Laboratory Location:

Recovery Comments:

Pressure vs. Time



Pressure vs. Time

