

# DRILL STEM TEST REPORT

Bird Dog Oil  
 1801 Broadway STE 450  
 Denver Colorado 80202  
 ATTN: Adam Nighswonger

**27-19s-10W-Rice**  
**Pioneer-Adams 2-27**  
 Job Ticket: 18553      DST#: 1  
 Test Start: 2013.09.14 @ 02:03:00

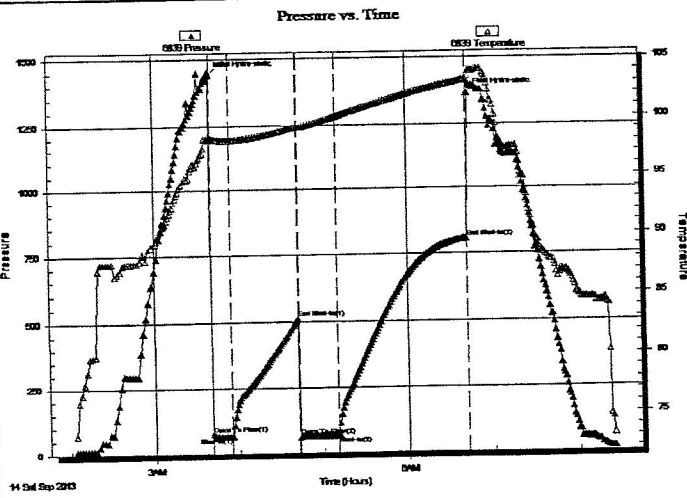
## GENERAL INFORMATION:

Formation: **Lansing B-F**  
 Deviated: No      Whipstock:      ft (KB)  
 Time Tool Opened: 03:41:00  
 Time Test Ended: 08:24:00  
 Test Type: Conventional Bottom Hole (Initial)  
 Tester: Dustin Ellis  
 Unit No: 3315-Great Bend-50  
 Interval: **2950.00 ft (KB) To 3020.00 ft (KB) (TVD)**  
 Total Depth: **3020.00 ft (KB) (TVD)**  
 Hole Diameter: **7.88 inches**      Hole Condition: Fair  
 Reference Elevations: **1756.00 ft (KB)**  
**1750.00 ft (CF)**  
 KB to GR/CF: **6.00 ft**

## Serial #: 6839

Press@RunDepth: **806.08 psia @      ft (KB)**      Capacity: **5000.00 psia**  
 Start Date: **2013.09.14**      End Date: **2013.09.14**      Last Calib.: **2013.09.14**  
 Start Time: **02:04:00**      End Time: **08:24:30**      Time On Btm: **2013.09.14 @ 03:41:00**  
 Time Off Btm: **2013.09.14 @ 06:42:30**

TEST COMMENT: 1st Open 15 minutes Strong blow built to the bottom of a 5 gallon bucket of water in 2 minutes.  
 1st Shut in 45 minutes No blow back.  
 2nd Open 30 minutes Strong blow built to the bottom of a 5 gallon bucket of water instantly.  
 2nd Shut in 90 minutes No blow back.



## PRESSURE SUMMARY

Time (Min.)	Pressure (psia)	Temp (deg F)	Annotation
0	1443.06	98.53	Initial Hydro-static
1	75.78	98.27	Open To Flow (1)
15	65.45	98.11	Shut-In(1)
62	512.92	99.26	End Shut-In(1)
63	62.51	99.18	Open To Flow (2)
89	65.56	100.09	Shut-In(2)
181	806.08	103.17	End Shut-In(2)
182	1368.55	103.47	Final Hydro-static

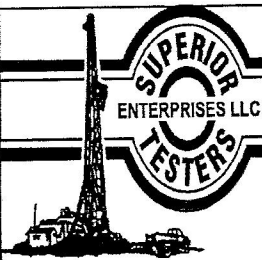
## Recovery

Length (ft)	Description	Volume (bbl)
30.00	Mud 100%	0.42

## Gas Rates

	Choke (inches)	Pressure (psia)	Gas Rate (Mcf/d)





# DRILL STEM TEST REPORT

Bird Dog Oil  
 1801 Broadway STE 450  
 Denver Colorado 80202  
 ATTN: Adam Nighswonger

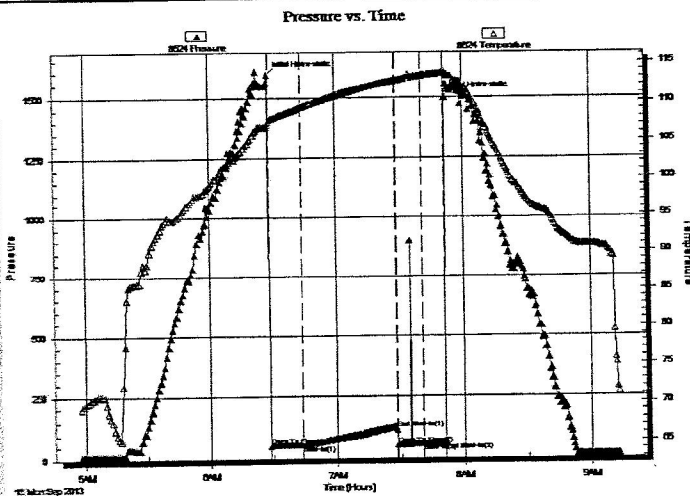
**27-19s-10W-Rice**  
**Pioneer-Adams 2-27**  
 Job Ticket: 18555      DST#: 3  
 Test Start: 2013.09.16 @ 04:57:00

## GENERAL INFORMATION:

Formation: **Arbuckle**  
 Deviated: No Whipstock:      ft (KB)  
 Time Tool Opened: 06:29:00  
 Time Test Ended: 09:14:00  
 Interval: **3198.00 ft (KB) To 3253.00 ft (KB) (TVD)**  
 Total Depth: **3253.00 ft (KB) (TVD)**  
 Hole Diameter: **7.88 inches** Hole Condition: Fair  
 Test Type: Conventional Bottom Hole (Initial)  
 Tester: Dustin Ellis  
 Unit No: 3315-Great Bend-50  
 Reference Elevations: 1756.00 ft (KB)  
 1750.00 ft (CF)  
 KB to GR/CF: 6.00 ft

**Serial #: 8524**      Inside  
 Press@RunDepth: 63.21 psia @ 3249.19 ft (KB)  
 Start Date: 2013.09.16      End Date: 2013.09.16  
 Start Time: 04:58:00      End Time: 09:13:00  
 Capacity: 5000.00 psia  
 Last Calib.: 2013.09.16  
 Time On Btm: 2013.09.16 @ 06:28:00  
 Time Off Btm: 2013.09.16 @ 07:51:30

TEST COMMENT: 1st Open 15 minutes Very weak surface blow.  
 1st Shut in 45 minutes No blow back  
 2nd Open 13 minutes Dead flushed tool no help.  
 2nd Shut in 10 minutes no blow back.



## PRESSURE SUMMARY

Time (Min.)	Pressure (psia)	Temp (deg F)	Annotation
0	1590.40	107.03	Initial Hydro-static
1	53.09	107.31	Open To Flow (1)
16	55.20	109.26	Shut-In(1)
60	116.50	112.61	End Shut-In(1)
61	54.10	112.65	Open To Flow (2)
73	58.18	113.20	Shut-In(2)
83	63.21	113.62	End Shut-In(2)
84	1499.36	113.93	Final Hydro-static

## Recovery

Length (ft)	Description	Volume (bbl)
12.00	Very lighty oil spotted mud .Mud 100%	0.17

## Gas Rates

Choke (inches)	Pressure (psia)	Gas Rate (Mcf/d)



