



**TRILOBITE  
TESTING, INC.**

### DRILL STEM TEST REPORT

Prepared For: **Jason Oil Co., LLC**

PO Box 701  
Russell, KS 67665

ATTN: Steve Reed

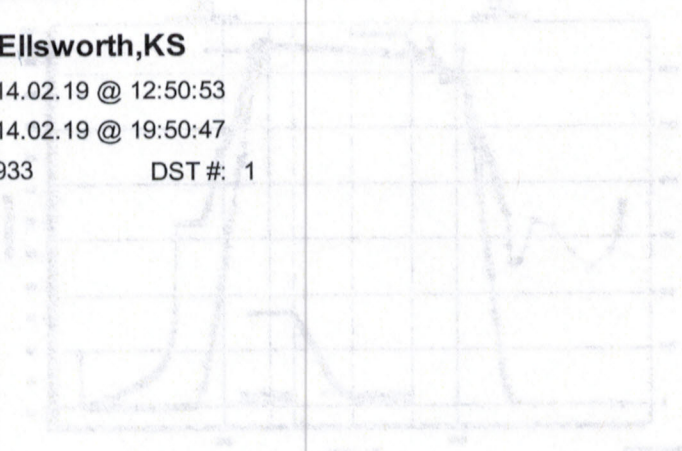
#### Harbacek #6

#### 7-16s-10w Ellsworth,KS

Start Date: 2014.02.19 @ 12:50:53

End Date: 2014.02.19 @ 19:50:47

Job Ticket #: 51933                      DST #: 1



Trilobite Testing, Inc

PO Box 362 Hays, KS 67601

ph: 785-625-4778 fax: 785-625-5620



**TRILOBITE TESTING, INC.**

# DRILL STEM TEST REPORT

Jason Oil Co., LLC

**7-16s-10w Ellsworth, KS**

PO Box 701  
Russell, KS 67665

**Harbacek #6**

Job Ticket: 51933

**DST#: 1**

ATTN: Steve Reed

Test Start: 2014.02.19 @ 12:50:53

## GENERAL INFORMATION:

Formation: **Arbuckle**

Deviated: No Whipstock: 0.00 ft (KB)

Time Tool Opened: 15:34:48

Time Test Ended: 19:50:47

Test Type: Conventional Straddle (Initial)

Tester: Matt Smith

Unit No: 53

Interval: **3252.00 ft (KB) To 3305.00 ft (KB) (TVD)**

Total Depth: 3400.00 ft (KB) (TVD)

Hole Diameter: 7.88 inches Hole Condition: Fair

Reference Elevations: 1831.00 ft (KB)

1824.00 ft (CF)

KB to GR/CF: 7.00 ft

**Serial #: 6719**

**Outside**

Press@RunDepth: 32.38 psig @ 3253.00 ft (KB)

Start Date: 2014.02.19

End Date: 2014.02.19

Start Time: 12:50:53

End Time: 19:50:47

Capacity: 8000.00 psig

Last Calib.: 2014.02.19

Time On Btm: 2014.02.19 @ 15:32:48

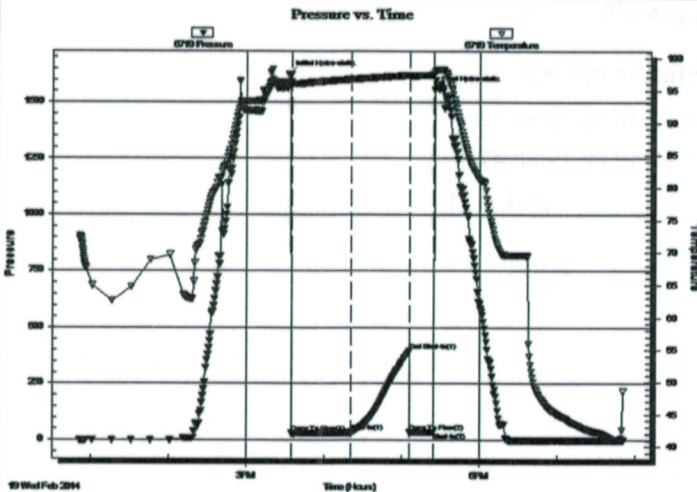
Time Off Btm: 2014.02.19 @ 17:25:18

TEST COMMENT: IF: Weak blow . Surf., - 2 1/4".

IS: No blow .

FF: No blow . Pulled test after 20 mins.

FS:



## PRESSURE SUMMARY

Time (Min.)	Pressure (psig)	Temp (deg F)	Annotation
0	1625.55	96.36	Initial Hydro-static
2	28.70	95.75	Open To Flow (1)
48	32.38	96.74	Shut-In(1)
93	396.83	97.36	End Shut-In(1)
94	33.22	97.21	Open To Flow (2)
112	33.88	97.45	Shut-In(2)
113	1554.39	97.89	Final Hydro-static

## Recovery

Length (ft)	Description	Volume (bbl)
20.00	SOCM 5%o 95% m	0.10

## Gas Rates

	Choke (Inches)	Pressure (psig)	Gas Rate (Mcf/d)







**TRILOBITE  
TESTING, INC**

**DRILL STEM TEST REPORT**

**TOOL DIAGRAM**

Jason Oil Co., LLC

**7-16s-10w Ellsworth,KS**

PO Box 701  
Russell, KS 67665

**Harbacek #6**

Job Ticket: 51933

**DST#: 1**

ATTN: Steve Reed

Test Start: 2014.02.19 @ 12:50:53

**Tool Information**

Drill Pipe:	Length: 3134.00 ft	Diameter: 3.80 inches	Volume: 43.96 bbl	Tool Weight: 2400.00 lb
Heavy Wt. Pipe:	Length: 0.00 ft	Diameter: 0.00 inches	Volume: 0.00 bbl	Weight set on Packer: 26000.00 lb
Drill Collar:	Length: 120.00 ft	Diameter: 2.25 inches	Volume: 0.59 bbl	Weight to Pull Loose: 58000.00 lb
		<b>Total Volume:</b>	<b>44.55 bbl</b>	Tool Chased 0.00 ft
Drill Pipe Above KB:	22.00 ft			String Weight: Initial 56000.00 lb
Depth to Top Packer:	3252.00 ft			Final 56000.00 lb
Depth to Bottom Packer:	3305.00 ft			
Interval between Packers:	53.00 ft			
Tool Length:	166.00 ft			
Number of Packers:	3	Diameter: 6.75 inches		
Tool Comments:				

Tool Description	Length (ft)	Serial No.	Position	Depth (ft)	Accum. Lengths	
Change Over Sub	1.00			3233.00		
Shut In Tool	5.00			3238.00		
Hydraulic tool	5.00			3243.00		
Packer	4.00			3247.00	20.00	Bottom Of Top Packer
Packer	5.00			3252.00		
Stubb	1.00			3253.00		
Recorder	0.00	6719	Outside	3253.00		
Recorder	0.00	6773	Outside	3253.00		
Perforations	6.00			3259.00		
Blank Spacing	32.00			3291.00		
Perforations	10.00			3301.00		
Blank Off Sub	1.00			3302.00		
T.C.	3.00			3305.00	53.00	Tool Interval
Packer	0.00			3305.00		
Stubb	1.00			3306.00		
Recorder	0.00	8676	Below	3306.00		
Perforations	25.00			3331.00		
Blank Spacing	64.00			3395.00		
Bullnose	3.00			3398.00	93.00	Bottom Packers & Anchor

**Total Tool Length: 166.00**



**TRILOBITE  
TESTING, INC**

# DRILL STEM TEST REPORT

**FLUID SUMMARY**

Jason Oil Co., LLC

**7-16s-10w Ellsworth, KS**

PO Box 701  
Russell, KS 67665

**Harbacek #6**

Job Ticket: 51933

**DST#: 1**

ATTN: Steve Reed

Test Start: 2014.02.19 @ 12:50:53

## Mud and Cushion Information

Mud Type: Gel Chem

Cushion Type:

Oil API:

deg API

Mud Weight: 9.00 lb/gal

Cushion Length:

ft

Water Salinity:

4000 ppm

Viscosity: 55.00 sec/qt

Cushion Volume:

bbbl

Water Loss: 7.98 in<sup>3</sup>

Gas Cushion Type:

Resistivity: 0.00 ohm.m

Gas Cushion Pressure:

psig

Salinity: 4000.00 ppm

Filter Cake: 0.20 inches

## Recovery Information

Recovery Table

Length ft	Description	Volume bbbl
20.00	SOCM 5%o 95%m	0.098

Total Length: 20.00 ft

Total Volume: 0.098 bbl

Num Fluid Samples: 0

Num Gas Bombs: 0

Serial #: none

Laboratory Name:

Laboratory Location:

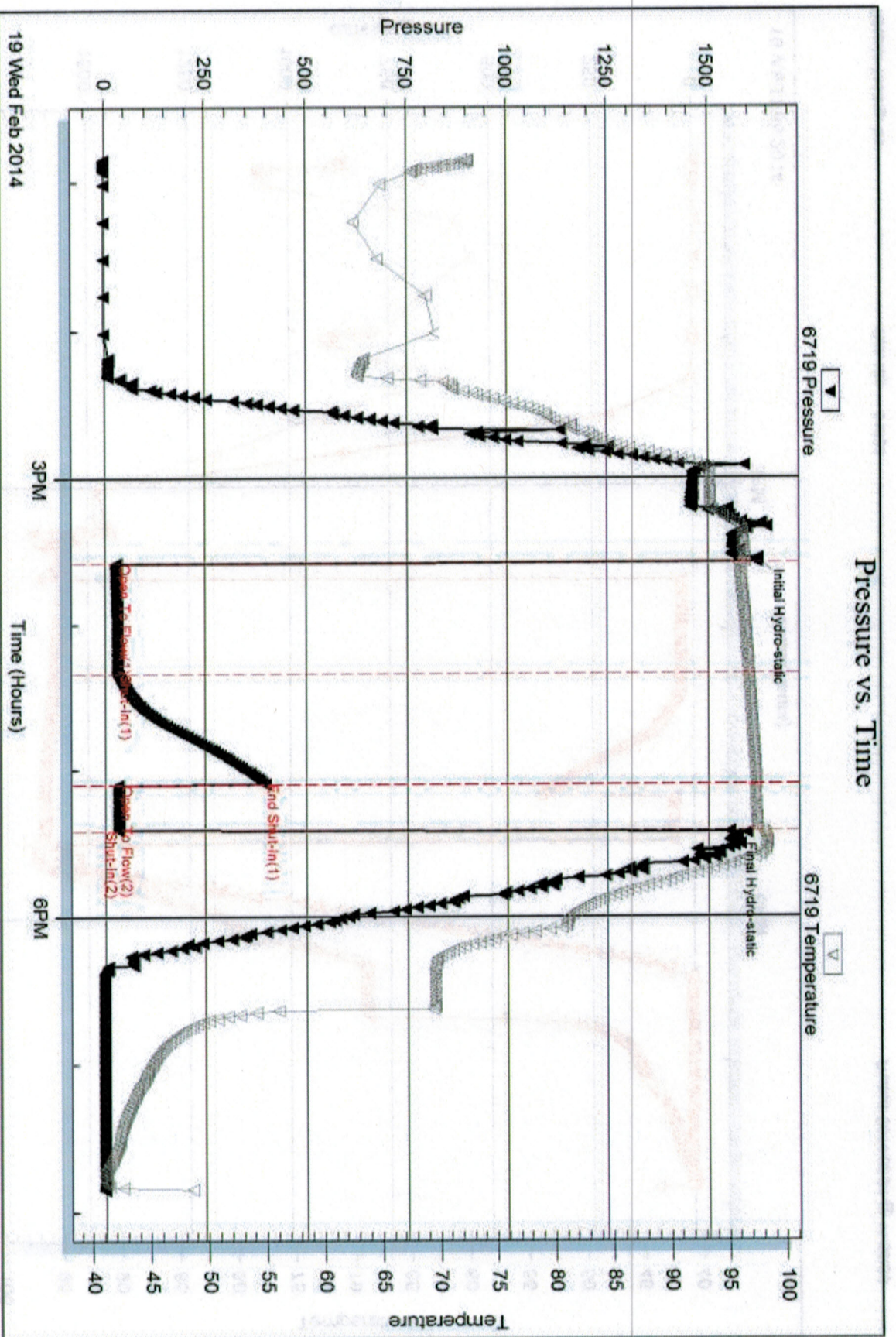
Recovery Comments:

Serial #: 6719

Outside Jason Oil Co. LLC

Harbacek #6

DST Test Number: 1



Tribble Testing, Inc

Ref. No: 51933

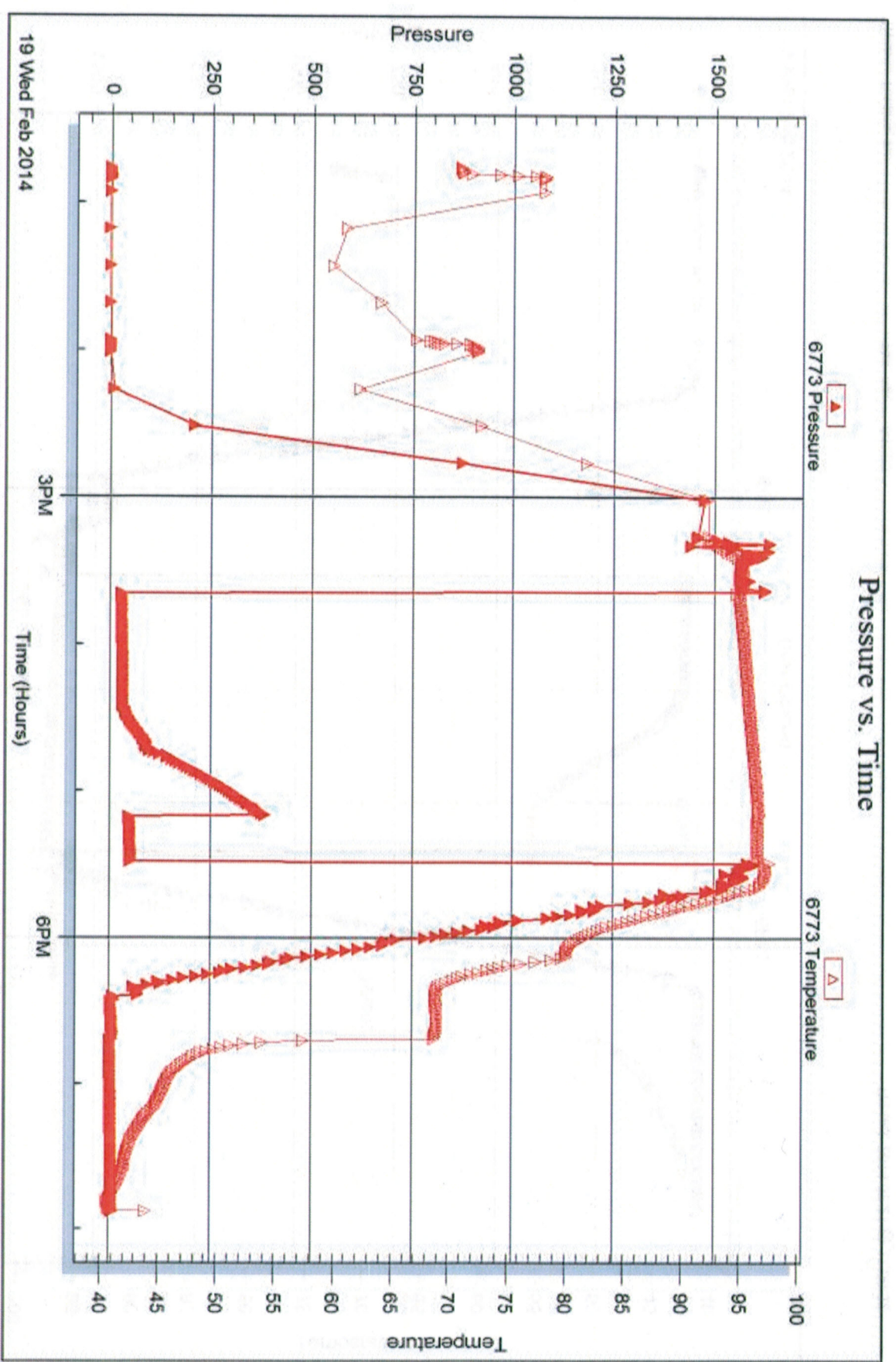
Printed: 2014.02.21 @ 11:56:52

Serial #: 6773

Outside Jason Oil Co., LLC

Harbacek #6

DST Test Number: 1



Tribble Testing, Inc

Ref. No: 51933

Printed: 2014.02.21 @ 11:56:53

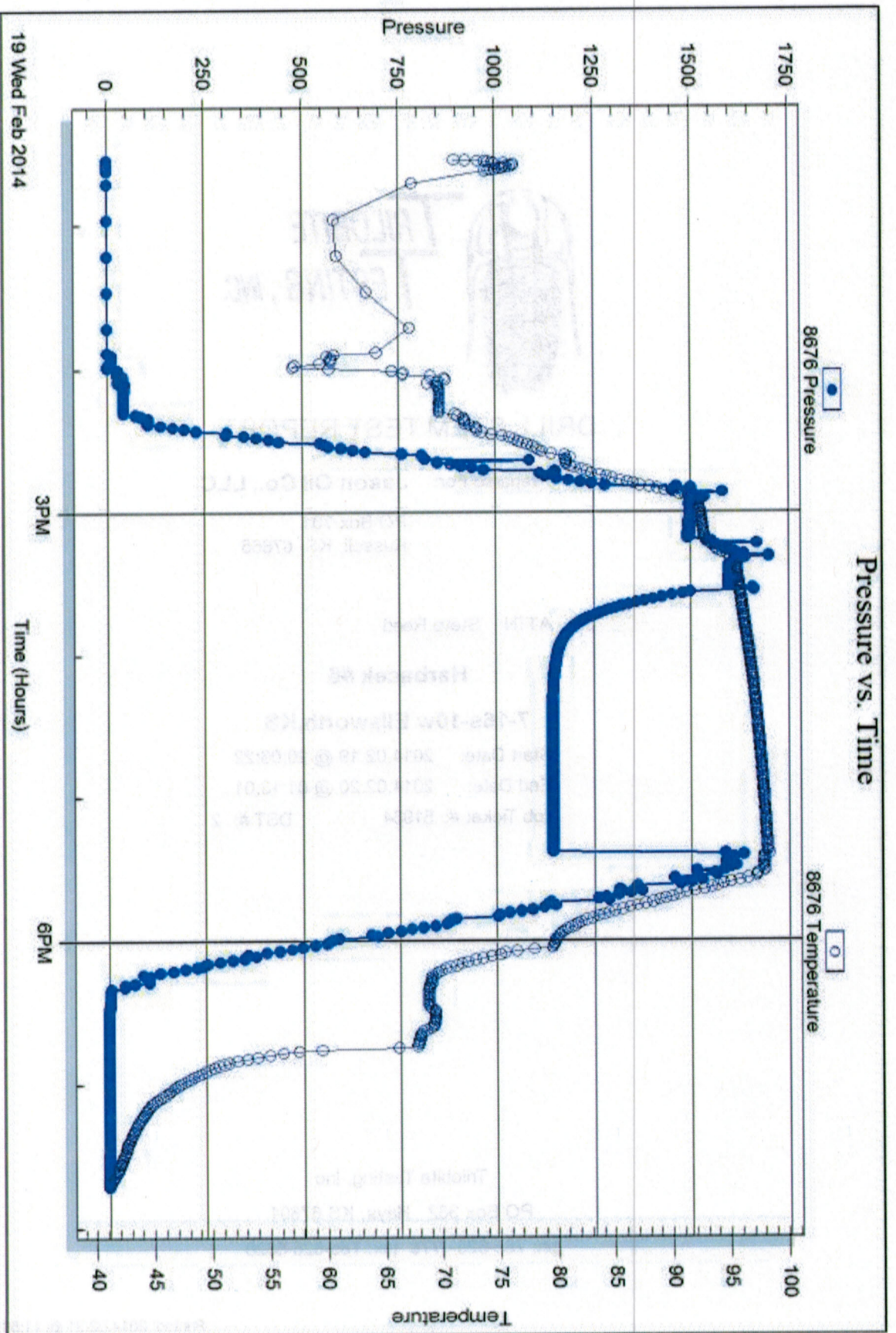


Serial #: 8676

Below (Stradden) Oil Co., LLC

Harbacek #6

DST Test Number: 1



Tribble Testing, Inc

Ref. No: 51933

Printed: 2014.02.21 @ 11:56:53



**TRILOBITE  
TESTING, INC.**

## DRILL STEM TEST REPORT

Prepared For: **Jason Oil Co., LLC**

PO Box 701  
Russell, KS 67665

ATTN: Steve Reed

**Harbacek #6**

**7-16s-10w Ellsworth,KS**

Start Date: 2014.02.19 @ 20:06:22

End Date: 2014.02.20 @ 01:13:01

Job Ticket #: 51934                      DST #: 2

Trilobite Testing, Inc

PO Box 362 Hays, KS 67601

ph: 785-625-4778 fax: 785-625-5620

Printed: 2014.02.21 @ 11:56:13

Jason Oil Co., LLC

7-16s-10w Ellsworth,KS

Harbacek #6

DST # 2

Arbuckle

2014.02.19



**TRILOBITE  
TESTING, INC.**

# DRILL STEM TEST REPORT

Jason Oil Co., LLC

**7-16s-10w Ellsworth, KS**

PO Box 701  
Russell, KS 67665

**Harbacek #6**

ATTN: Steve Reed

Job Ticket: 51934

**DST#: 2**

Test Start: 2014.02.19 @ 20:06:22

## GENERAL INFORMATION:

Formation: **Arbuckle**  
 Deviated: No Whipstock: 0.00 ft (KB)  
 Time Tool Opened: 21:29:17  
 Time Test Ended: 01:13:01

Test Type: Conventional Straddle (Reset)  
 Tester: Matt Smith  
 Unit No: 53

Interval: **3298.00 ft (KB) To 3315.00 ft (KB) (TVD)**  
 Total Depth: 3400.00 ft (KB) (TVD)  
 Hole Diameter: 7.88 inches Hole Condition: Fair

Reference Elevations: 1831.00 ft (KB)  
 1824.00 ft (CF)  
 KB to GR/CF: 7.00 ft

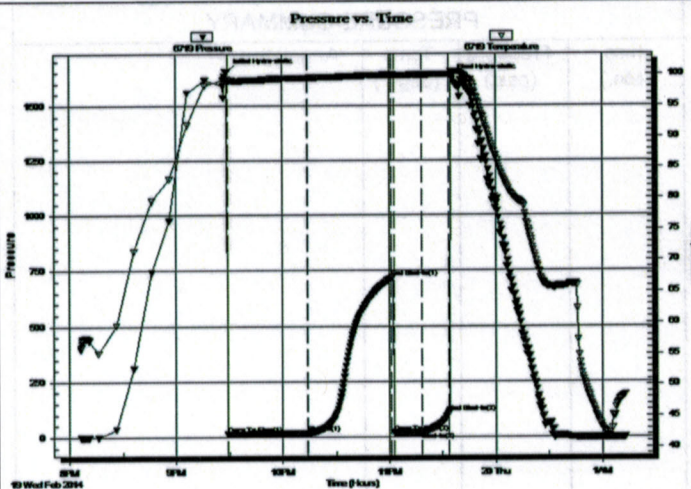
## Serial #: 6719

**Outside**

Press@RunDepth: 20.17 psig @ 3299.00 ft (KB)  
 Start Date: 2014.02.19 End Date: 2014.02.20  
 Start Time: 20:06:22 End Time: 01:13:01

Capacity: 8000.00 psig  
 Last Calib.: 2014.02.20  
 Time On Btm: 2014.02.19 @ 21:28:47  
 Time Off Btm: 2014.02.19 @ 23:35:02

TEST COMMENT: IF: Weak blow . Surf., - 1/2 ".  
 IS: No blow .  
 FF: No blow .  
 FS: No blow .



## PRESSURE SUMMARY

Time (Min.)	Pressure (psig)	Temp (deg F)	Annotation
0	1653.16	99.23	Initial Hydro-static
1	11.84	98.81	Open To Flow (1)
46	17.47	99.49	Shut-In(1)
93	717.13	100.00	End Shut-In(1)
94	19.00	99.75	Open To Flow (2)
110	20.17	99.99	Shut-In(2)
125	106.33	100.09	End Shut-In(2)
127	1624.34	100.53	Final Hydro-static

## Recovery

Length (ft)	Description	Volume (bbl)
20.00	SOCM 3%o 97%m	0.10

\* Recovery from multiple tests

## Gas Rates

Choke (inches)	Pressure (psig)	Gas Rate (Mcf/d)







**TRILOBITE  
TESTING, INC.**

# DRILL STEM TEST REPORT

**TOOL DIAGRAM**

Jason Oil Co., LLC

**7-16s-10w Ellsworth, KS**

PO Box 701  
Russell, KS 67665

**Harbacek #6**

Job Ticket: 51934

**DST#: 2**

ATTN: Steve Reed

Test Start: 2014.02.19 @ 20:06:22

## Tool Information

Drill Pipe:	Length: 3187.00 ft	Diameter: 3.80 inches	Volume: 44.71 bbl	Tool Weight: 2400.00 lb
Heavy Wt. Pipe:	Length: 0.00 ft	Diameter: 0.00 inches	Volume: 0.00 bbl	Weight set on Packer: 26000.00 lb
Drill Collar:	Length: 120.00 ft	Diameter: 2.25 inches	Volume: 0.59 bbl	Weight to Pull Loose: 58000.00 lb
			<u>Total Volume: 45.30 bbl</u>	Tool Chased 0.00 ft
Drill Pipe Above KB:	29.00 ft			String Weight: Initial 56000.00 lb
Depth to Top Packer:	3298.00 ft			Final 56000.00 lb
Depth to Bottom Packer:	3315.00 ft			
Interval between Packers:	17.00 ft			
Tool Length:	119.00 ft			
Number of Packers:	3	Diameter: 6.75 inches		

Tool Comments:

## Tool Description

Tool Description	Length (ft)	Serial No.	Position	Depth (ft)	Accum. Lengths
Change Over Sub	1.00			3279.00	
Shut In Tool	5.00			3284.00	
Hydraulic tool	5.00			3289.00	
Packer	4.00			3293.00	20.00 Bottom Of Top Packer
Packer	5.00			3298.00	
Stubb	1.00			3299.00	
Recorder	0.00	6719	Outside	3299.00	
Recorder	0.00	6773	Outside	3299.00	
Perforations	5.00			3304.00	
Blank Spacing	0.00			3304.00	
Perforations	7.00			3311.00	
Blank Off Sub	1.00			3312.00	
T.C.	3.00			3315.00	17.00 Tool Interval
Packer	0.00			3315.00	
Stubb	1.00			3316.00	
Recorder	0.00	8676	Below	3316.00	
Change Over Sub	1.00			3317.00	
Blank Spacing	64.00			3381.00	
Change Over Sub	1.00			3382.00	
Perforations	12.00			3394.00	
Bullnose	3.00			3397.00	82.00 Bottom Packers & Anchor
<b>Total Tool Length:</b>	<b>119.00</b>				



**TRILOBITE TESTING, INC.**

# DRILL STEM TEST REPORT

**FLUID SUMMARY**

Jason Oil Co., LLC

**7-16s-10w Ellsworth, KS**

PO Box 701  
Russell, KS 67665

**Harbacek #6**

Job Ticket: 51934

**DST#: 2**

ATTN: Steve Reed

Test Start: 2014.02.19 @ 20:06:22

## Mud and Cushion Information

Mud Type: Gel Chem  
Mud Weight: 9.00 lb/gal  
Viscosity: 55.00 sec/qt  
Water Loss: 7.97 in<sup>3</sup>  
Resistivity: 0.00 ohm.m  
Salinity: 4000.00 ppm  
Filter Cake: 0.20 inches

Cushion Type:  
Cushion Length: ft  
Cushion Volume: bbl  
Gas Cushion Type:  
Gas Cushion Pressure: psig

Oil API: deg API  
Water Salinity: 4000 ppm

## Recovery Information

Recovery Table

Length ft	Description	Volume bbl
20.00	SOCM 3%o 97%m	0.098

Total Length: 20.00 ft      Total Volume: 0.098 bbl

Num Fluid Samples: 0

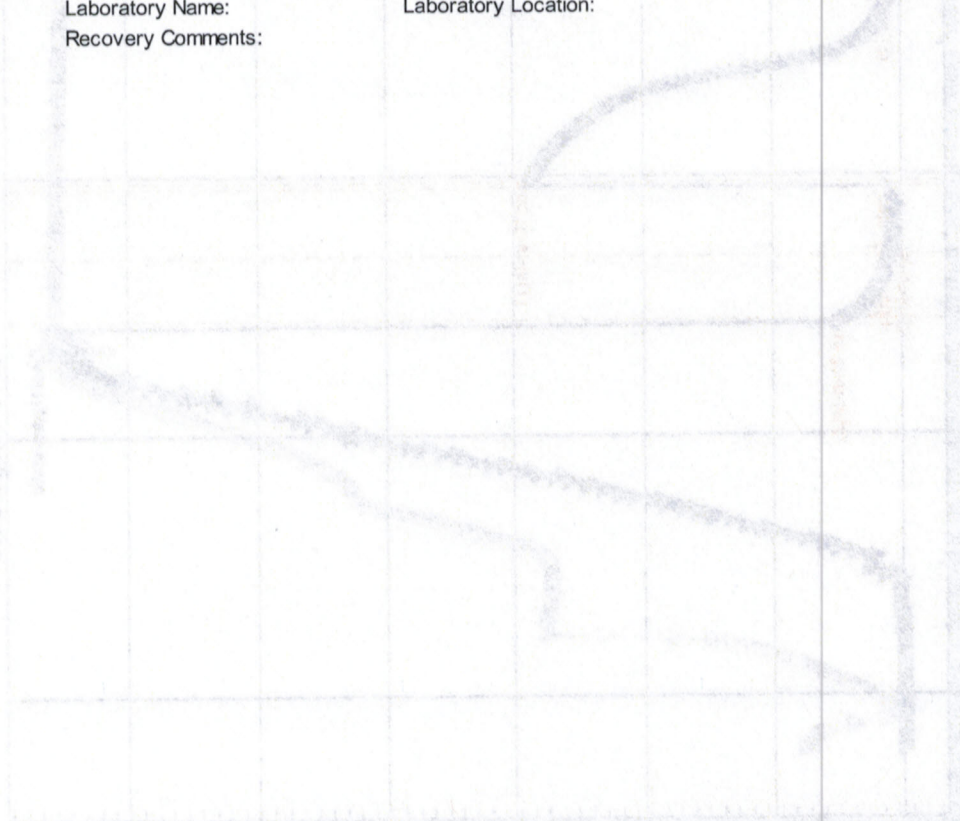
Num Gas Bombs: 0

Serial #: none

Laboratory Name:

Laboratory Location:

Recovery Comments:

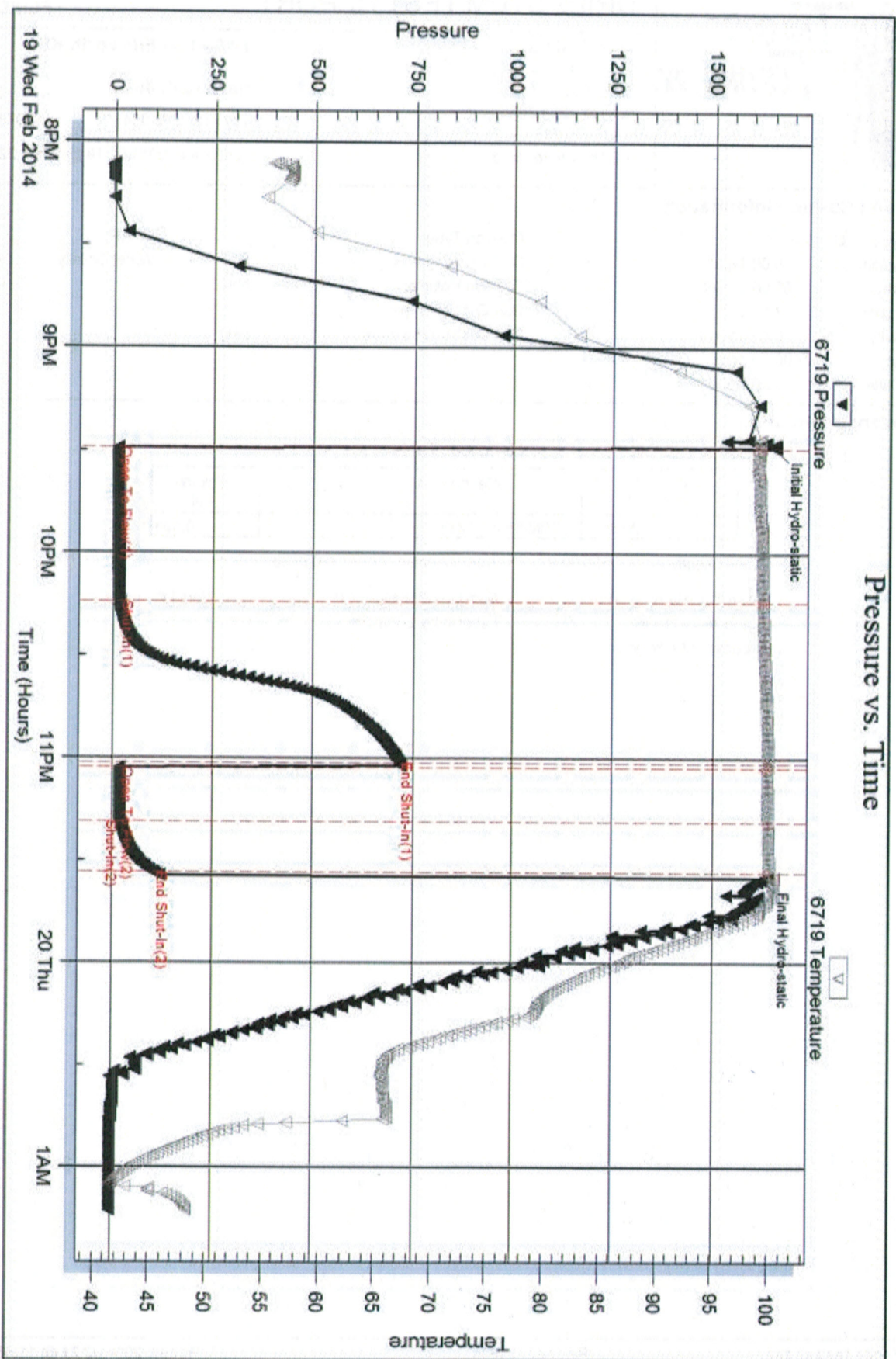


Serial #: 6719

Outside Jason Oil Co., LLC

Harback #6

DST Test Number: 2



Tribolite Testing, Inc

Ref. No: 51934

Printed: 2014.02.21 @ 11:56:16

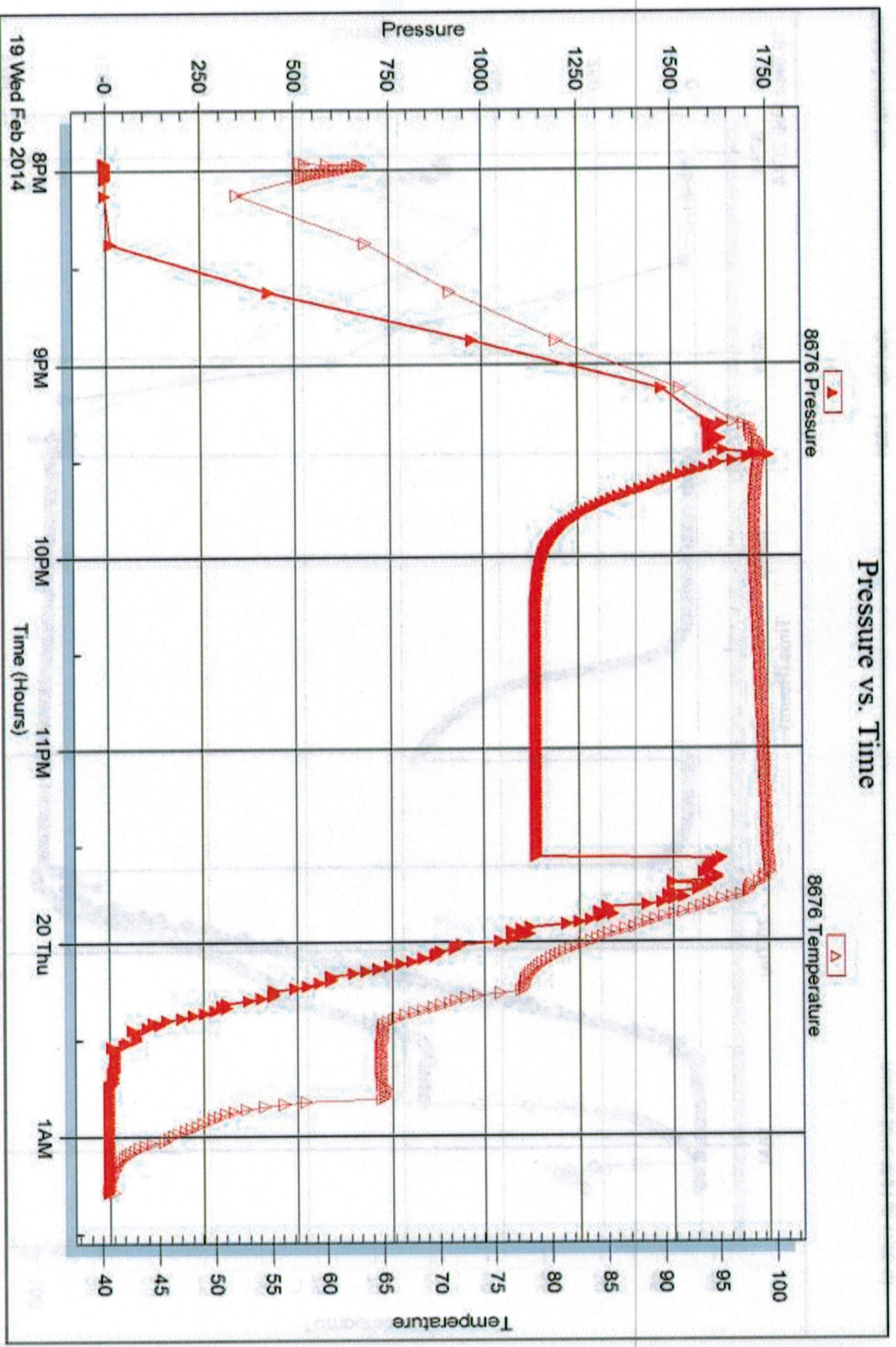


Serial #: 8676

Below (Straddler) Oil Co., LLC

Harbacek #6

DST Test Number: 2



Tribble Testing, Inc

Ref. No: 51934

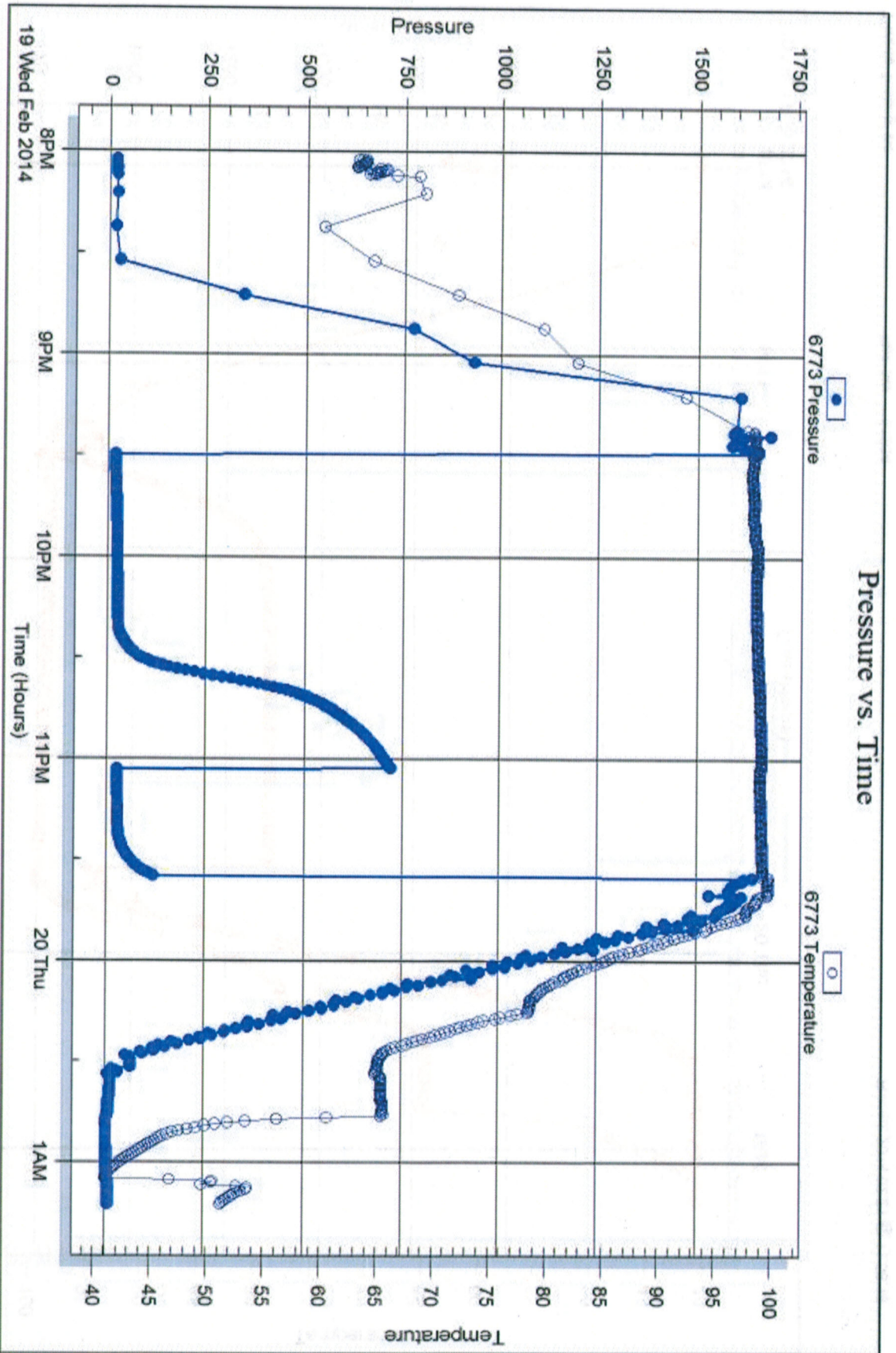
Printed: 2014.02.21 @ 11:56:16

Serial #: 6773

Outside Jason Oil Co., LLC

Harback #6

DST Test Number: 2





**TRILOBITE TESTING, INC.**

### DRILL STEM TEST REPORT

Prepared For: **Jason Oil Co., LLC**

PO Box 701  
Russell, KS 67665

ATTN: Steve Reed

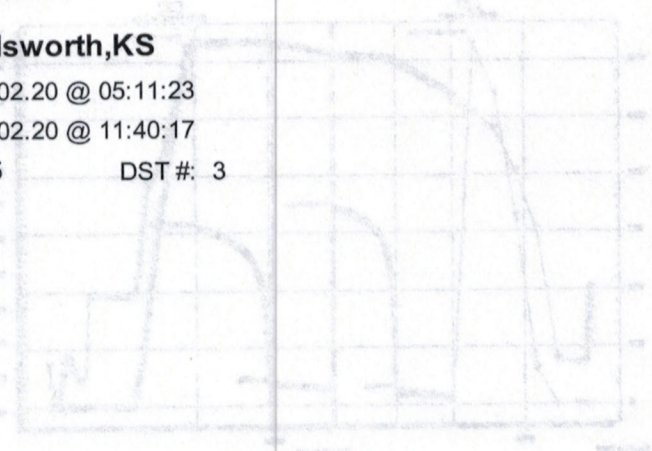
#### Harbacek #6

#### 7-16s-10w Ellsworth,KS

Start Date: 2014.02.20 @ 05:11:23

End Date: 2014.02.20 @ 11:40:17

Job Ticket #: 51935                      DST #: 3



Trilobite Testing, Inc

PO Box 362 Hays, KS 67601

ph: 785-625-4778 fax: 785-625-5620

Jason Oil Co., LLC    7-16s-10w Ellsworth,KS    Harbacek #6    DST # 3    Arbuckle    2014.02.20



**TRILOBITE TESTING, INC.**

# DRILL STEM TEST REPORT

Jason Oil Co., LLC

7-16s-10w Ellsworth, KS

PO Box 701  
Russell, KS 67665

Harbacek #6

Job Ticket: 51935

DST#: 3

ATTN: Steve Reed

Test Start: 2014.02.20 @ 05:11:23

## GENERAL INFORMATION:

Formation: **Arbuckle**

Deviated: No Whipstock: 0.00 ft (KB)

Time Tool Opened: 06:51:18

Time Test Ended: 11:40:17

Interval: **3298.00 ft (KB) To 3325.00 ft (KB) (TVD)**

Total Depth: 3400.00 ft (KB) (TVD)

Hole Diameter: 7.88 inches Hole Condition: Fair

Test Type: Conventional Straddle (Reset)

Tester: Matt Smith

Unit No: 53

Reference Elevations: 1831.00 ft (KB)

1824.00 ft (CF)

KB to GR/CF: 7.00 ft

Serial #: **6719**

Outside

Press@RunDepth: 94.58 psig @ 3299.00 ft (KB)

Start Date: 2014.02.20

End Date: 2014.02.20

Start Time: 05:11:23

End Time: 11:40:17

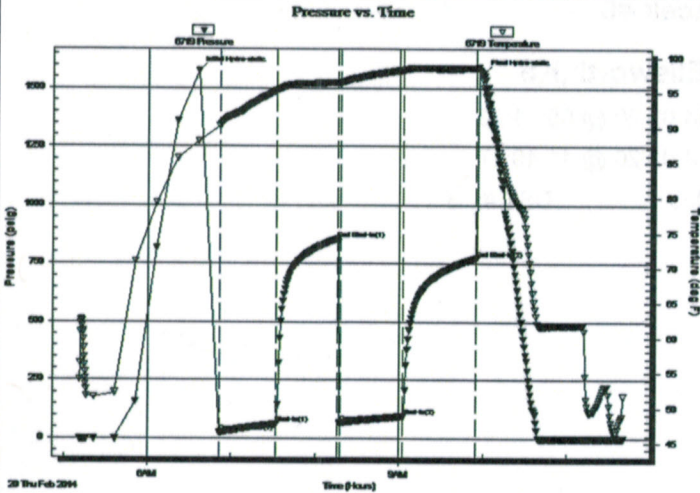
Capacity: 8000.00 psig

Last Calib.: 2014.02.20

Time On Btm: 2014.02.20 @ 06:36:18

Time Off Btm: 2014.02.20 @ 10:00:18

TEST COMMENT: IF: Weak blow . B.O.B. in 30 mins.  
IS: Weak blow . Surf., - 1/2 ".  
FF: Weak blow . Surf., - 13 ".  
FS: No blow .



## PRESSURE SUMMARY

Time (Min.)	Pressure (psig)	Temp (deg F)	Annotation
0	1573.69	88.01	Initial Hydro-static
15	23.81	90.24	Open To Flow (1)
56	61.41	95.30	Shut-In(1)
100	856.90	96.39	End Shut-In(1)
102	65.49	96.35	Open To Flow (2)
147	94.58	98.17	Shut-In(2)
199	774.27	98.43	End Shut-In(2)
204	1566.07	95.67	Final Hydro-static

## Recovery

Length (ft)	Description	Volume (bbl)
300.00	WCMGO 5%w 10%g 35%m 50%o	4.21
0.00	240' G.I.P.	0.00

\* Recovery from multiple tests

## Gas Rates

	Choke (inches)	Pressure (psig)	Gas Rate (Mcf/d)







**TRILOBITE  
TESTING, INC.**

# DRILL STEM TEST REPORT

**TOOL DIAGRAM**

Jason Oil Co., LLC

**7-16s-10w Ellsworth, KS**

PO Box 701  
Russell, KS 67665

**Harbacek #6**

Job Ticket: 51935

**DST#: 3**

ATTN: Steve Reed

Test Start: 2014.02.20 @ 05:11:23

**Tool Information**

Drill Pipe: Length: 3318.00 ft	Diameter: 3.80 inches	Volume: 46.54 bbl	Tool Weight: lb
Heavy Wt. Pipe: Length: 0.00 ft	Diameter: 0.00 inches	Volume: 0.00 bbl	Weight set on Packer: 24000.00 lb
Drill Collar: Length: 0.00 ft	Diameter: 2.25 inches	Volume: 0.00 bbl	Weight to Pull Loose: 56000.00 lb
Total Volume: 46.54 bbl			Tool Chased 0.00 ft
Drill Pipe Above KB: 40.00 ft			String Weight: Initial 56000.00 lb
Depth to Top Packer: 3298.00 ft			Final 56000.00 lb
Depth to Bottom Packer: 3325.00 ft			
Interval between Packers: 27.00 ft			
Tool Length: 119.00 ft			
Number of Packers: 3	Diameter: 6.75 inches		

Tool Comments:

Tool Description	Length (ft)	Serial No.	Position	Depth (ft)	Accum. Lengths
Change Over Sub	1.00			3279.00	
Shut In Tool	5.00			3284.00	
Hydraulic tool	5.00			3289.00	
Packer	4.00			3293.00	20.00 Bottom Of Top Packer
Packer	5.00			3298.00	
Stubb	1.00			3299.00	
Recorder	0.00	6719	Outside	3299.00	
Recorder	0.00	6773	Outside	3299.00	
Perforations	22.00			3321.00	
Blank Spacing	0.00			3321.00	
Perforations	0.00			3321.00	
Blank Off Sub	1.00			3322.00	
T.C.	3.00			3325.00	27.00 Tool Interval
Packer	0.00			3325.00	
Stubb	1.00			3326.00	
Recorder	0.00	8676	Below	3326.00	
Perforations	0.00			3326.00	
Change Over Sub	1.00			3327.00	
Blank Spacing	64.00			3391.00	
Change Over Sub	1.00			3392.00	
Perforations	2.00			3394.00	
Bullnose	3.00			3397.00	72.00 Bottom Packers & Anchor

**Total Tool Length: 119.00**



**TRILOBITE  
TESTING, INC.**

# DRILL STEM TEST REPORT

## FLUID SUMMARY

Jason Oil Co., LLC

**7-16s-10w Ellsworth, KS**

PO Box 701  
Russell, KS 67665

**Harbacek #6**

Job Ticket: 51935

**DST#: 3**

ATTN: Steve Reed

Test Start: 2014.02.20 @ 05:11:23

### Mud and Cushion Information

Mud Type: Gel Chem  
Mud Weight: 9.00 lb/gal  
Viscosity: 55.00 sec/qt  
Water Loss: 7.96 in<sup>3</sup>  
Resistivity: 0.00 ohm.m  
Salinity: 4000.00 ppm  
Filter Cake: 0.20 inches

Cushion Type:  
Cushion Length: ft  
Cushion Volume: bbl  
Gas Cushion Type:  
Gas Cushion Pressure: psig

Oil API: deg API  
Water Salinity: 4000 ppm

### Recovery Information

Recovery Table

Length ft	Description	Volume bbl
300.00	WCMGO 5%w 10%g 35%m 50%o	4.208
0.00	240' G.I.P.	0.000

Total Length: 300.00 ft      Total Volume: 4.208 bbl

Num Fluid Samples: 0

Num Gas Bombs: 0

Serial #: none

Laboratory Name:

Laboratory Location:

Recovery Comments:



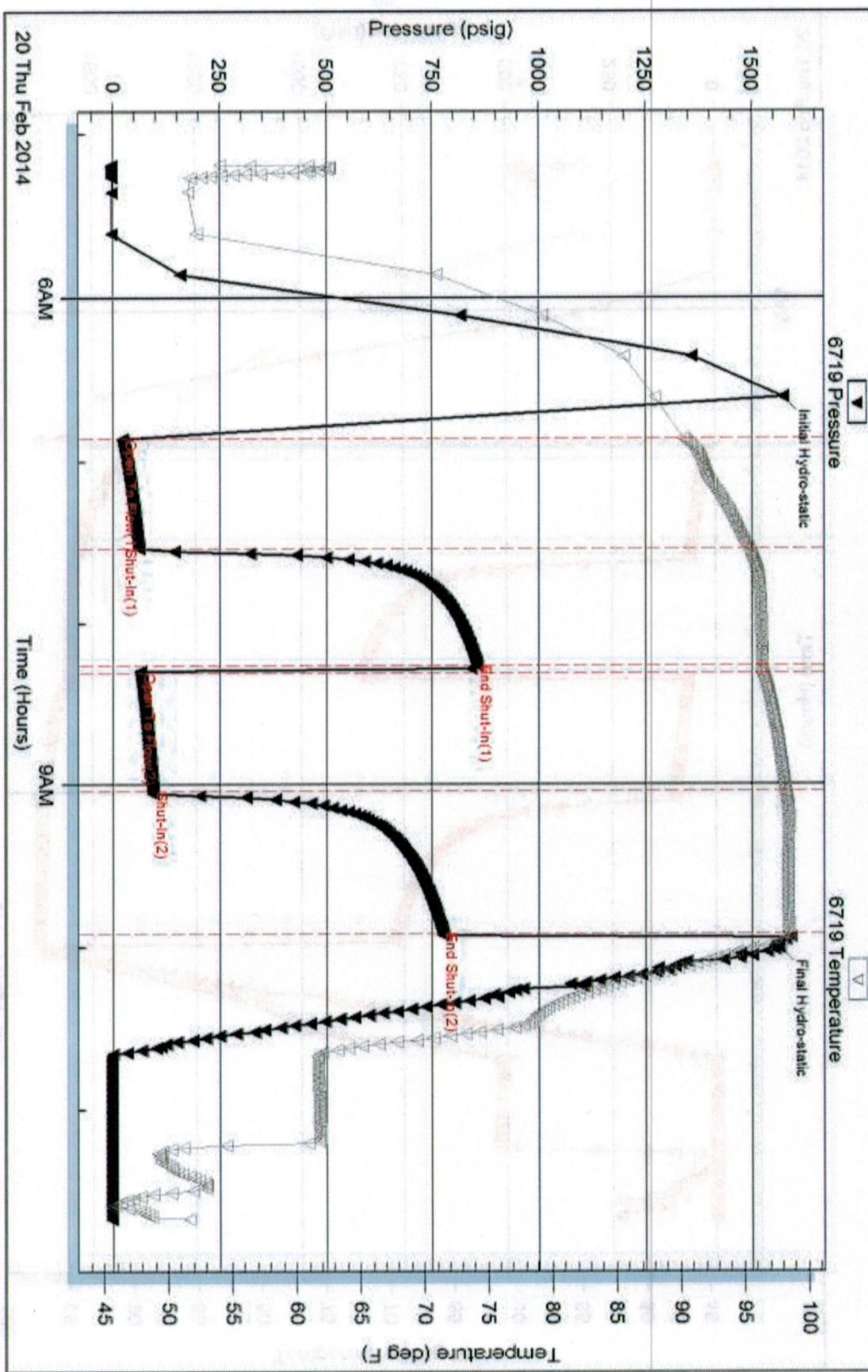
Serial #: 6719

Outside Jason Oil Co. LLC

Harbacek #6

DST Test Number 3

### Pressure vs. Time



Tribble Testing, Inc

Ref. No: 51935

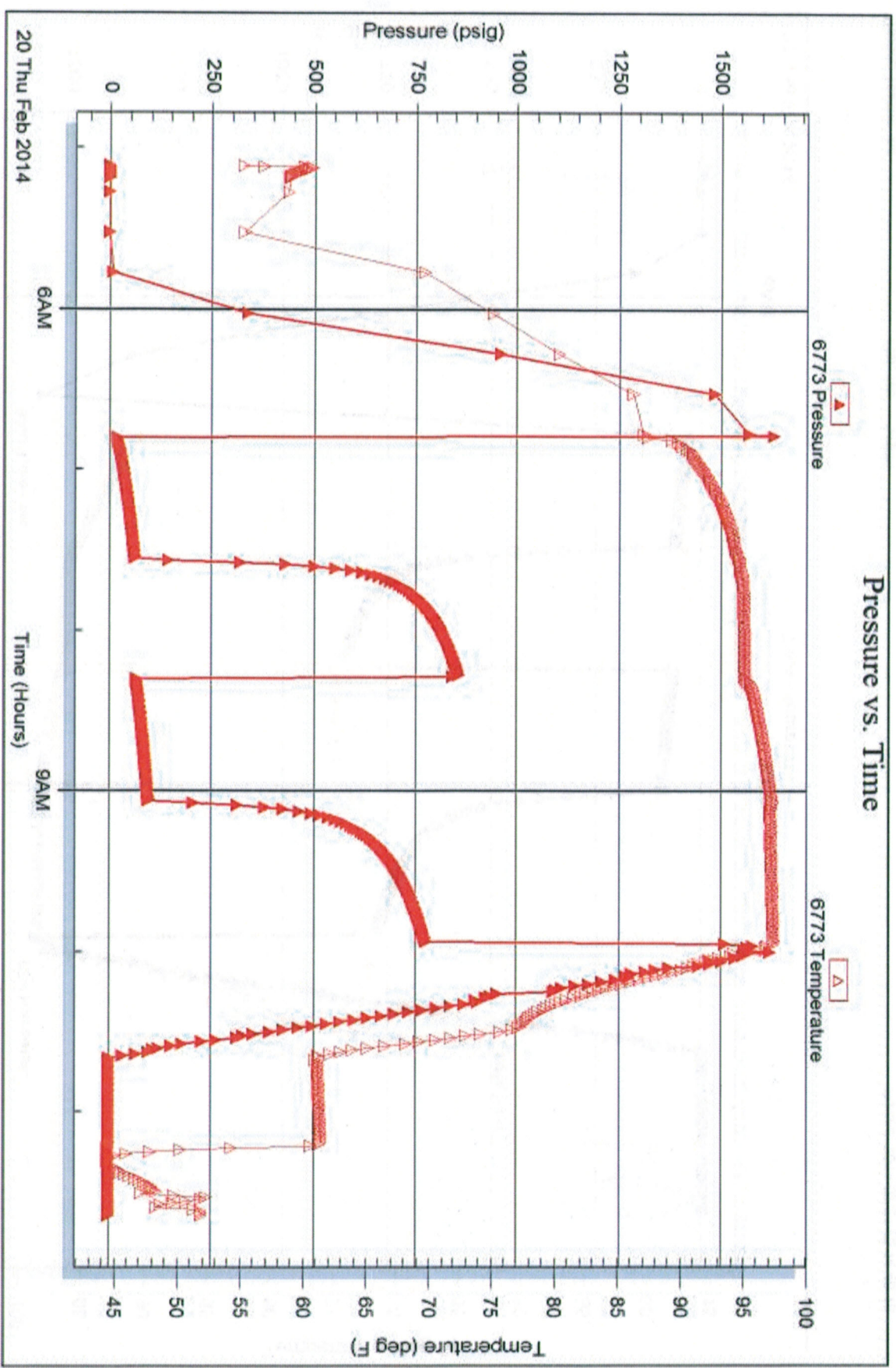
Printed: 2014.02.21 @ 14:48:19

Serial #: 6773

Outside Jason Oil Co., LLC

Harbacek #6

DST Test Number: 3



Tribble Testing, Inc

Ref. No: 51935

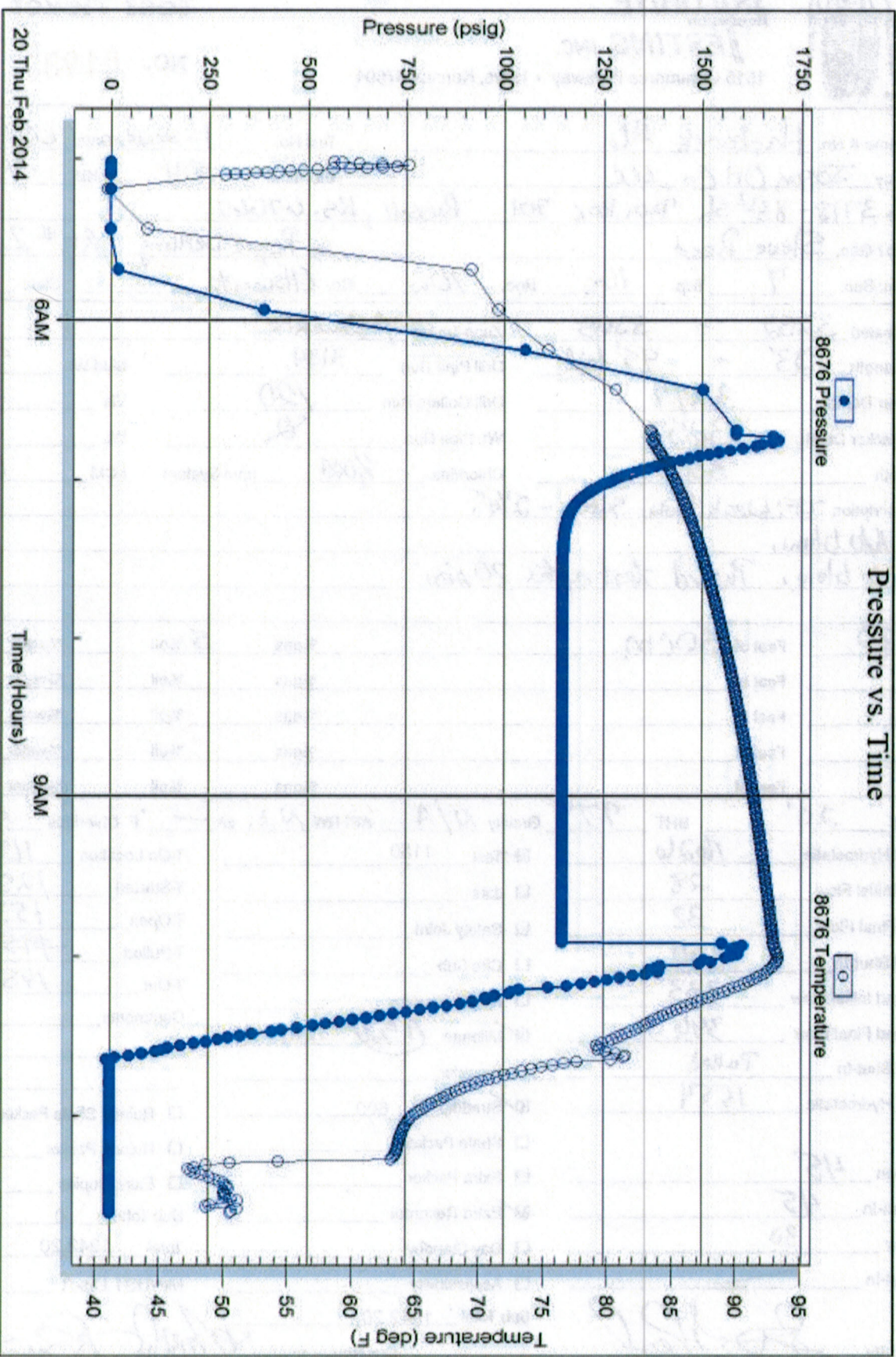
Printed: 2014.02.21 @ 14:48:19

Serial #: 8676

Below (Straddler) Oil Co., LLC

Harbacek #6

DST Test Number: 3



Triobite Testing, Inc

Ref. No: 51935

Printed: 2014.02.21 @ 14:48:19



# TRILOBITE TESTING INC.

1515 Commerce Parkway • Hays, Kansas 67601

## Test Ticket

NO. 51933

Well Name & No. Harkbeck #6 Test No. 1 - Straddle Date 02/19/14  
 Company Jason Oil Co., LLC Elevation 1831 KB 1824 GL  
 Address 3718 - 83<sup>rd</sup> St. P.O. Box 701 Russell, KS. 67665  
 Co. Rep / Geo. Steve Reed Rig Royal Drilling Rig # 2  
 Location: Sec. 7 Twp. 16S Rge. 10W Co. Ellsworth State KS.

Interval Tested 3252 - 3305 Zone Tested Arbuckle  
 Anchor Length 53' - 95' tail Drill Pipe Run 3134 Mud Wt. 9.2  
 Top Packer Depth 3247 Drill Collars Run 120 Vis 55  
 Bottom Packer Depth 3252 Wt. Pipe Run 8 WL 8  
 Total Depth 3305 Chlorides 4000 ppm System LCM 17#

Blow Description IF: Weak blns. surfs, - 2 1/4"  
ISF: No blow.  
FF: No blow. Pulled test after 20 min  
FST:

Rec	Feet of	%gas	%oil	%water	%mud
<u>20</u>	<u>SOCM</u>		<u>5</u>		<u>95</u>
Rec	Feet of	%gas	%oil	%water	%mud
Rec	Feet of	%gas	%oil	%water	%mud
Rec	Feet of	%gas	%oil	%water	%mud
Rec	Feet of	%gas	%oil	%water	%mud

Rec Total 20' BHT 97° Gravity N/A API RW N & @ — °F Chlorides 4,000 ppm

(A) Initial Hydrostatic <u>1626</u>	<input checked="" type="checkbox"/> Test <u>1150</u>	T-On Location <u>1130</u>
(B) First Initial Flow <u>28</u>	<input type="checkbox"/> Jars	T-Started <u>1250</u>
(C) First Final Flow <u>22</u>	<input type="checkbox"/> Safety Joint	T-Open <u>1535</u>
(D) Initial Shut-In <u>324</u>	<input type="checkbox"/> Circ Sub	T-Pulled <u><del>1950</del> 1725</u>
(E) Second Initial Flow <u>333</u>	<input type="checkbox"/> Hourly Standby	T-Out <u>1950</u>
(F) Second Final Flow <u>396</u>	<input checked="" type="checkbox"/> Mileage <u>(1.52)</u> 124rt 192.20	Comments
(G) Final Shut-In <u>Pulled</u>	<input type="checkbox"/> Sampler	
(H) Final Hydrostatic <u>1554</u>	<input checked="" type="checkbox"/> Straddle <u>600</u>	<input type="checkbox"/> Ruined Shale Packer

Initial Open 45  
 Initial Shut-In 45  
 Final Flow 30  
 Final Shut-In —

Shale Packer  
 Extra Packer  
 Extra Recorder  
 Day Standby  
 Accessibility

Sub Total 1942.20  
 Total 1942.20  
 MP/DST Disc't

Approved By Steve Reed Our Representative Mark Smith

Trilobite Testing Inc. shall not be liable for damaged of any kind of the property or personnel of the one for whom a test is made, or for any loss suffered or sustained, directly or indirectly, through the use of its equipment, or its statements or opinion concerning the results of any test, tools lost or damaged in the hole shall be paid for at cost by the party for whom the test is made.



# TRILOBITE TESTING INC.

1515 Commerce Parkway • Hays, Kansas 67601

## Test Ticket

NO. 51934

Well Name & No. Harbacek #6 Test No. 2-skittle Date 2-19-14  
 Company Jason Oil Co., LLC Elevation 1831 KB 1824 GL  
 Address 3718-83<sup>rd</sup> St. P.O. Box 701 Russell, Ks. 67665  
 Co. Rep / Geo. Steve Reed Rig Royal Drilling Rig # 2  
 Location: Sec. 7 Twp. 16s Rge. 10w Co. Ellsworth State Ks.

Interval Tested 3298 - 3315 Zone Tested Arbuckle  
 Anchor Length 17' - 85' tail Drill Pipe Run 3187 Mud Wt. 9.2  
 Top Packer Depth 3293 Drill Collars Run 120 Vis 55  
 Bottom Packer Depth 3298 WL Pipe Run 0 WL 8  
 Total Depth 3315 Chlorides 4,000 ppm System LCM 1<sup>st</sup>

Blow Description IF: Weak blow, Surf. - 1/2"  
ISI: No blow.  
FF: No blow.  
FSI: No blow.

Rec	Feet of	%gas	%oil	%water	%mud
<u>20</u>	<u>50cm</u>		<u>3</u>		<u>97</u>
Rec	Feet of	%gas	%oil	%water	%mud
Rec	Feet of	%gas	%oil	%water	%mud
Rec	Feet of	%gas	%oil	%water	%mud
Rec	Feet of	%gas	%oil	%water	%mud

Rec Total 20' BHT 109° Gravity N/A API RW N.C. @ — °F Chlorides 4,000 ppm

(A) Initial Hydrostatic	<u>1653</u>	<input checked="" type="checkbox"/> Test	<u>1150</u>	T-On Location	<u>1130</u>
(B) First Initial Flow	<u>12</u>	<input type="checkbox"/> Jars		T-Started	<u>2006</u>
(C) First Final Flow	<u>17</u>	<input type="checkbox"/> Safety Joint		T-Open	<u>2129</u>
(D) Initial Shut-In	<u>717</u>	<input type="checkbox"/> Circ Sub		T-Pulled	<u>2335</u>
(E) Second Initial Flow	<u>19</u>	<input type="checkbox"/> Hourly Standby		T-Out	<u>0113</u>
(F) Second Final Flow	<u>20</u>	<input type="checkbox"/> Mileage		Comments	
(G) Final Shut-In	<u>106</u>	<input type="checkbox"/> Sampler			
(H) Final Hydrostatic	<u>1624</u>	<input checked="" type="checkbox"/> Straddle <u>600</u>		<input type="checkbox"/> Ruined Shale Packer	

Initial Open 45  
 Initial Shut-In 45  
 Final Flow 15  
 Final Shut-In 15

Shale Packer  
 Extra Packer  
 Extra Recorder  
 Day Standby  
 Accessibility

Sub Total 1750

MP/DST Disc't \_\_\_\_\_

Approved By [Signature] Our Representative Matthew A Smith

Triobite Testing Inc. shall not be liable for damaged of any kind of the property or personnel of the one for whom a test is made, or for any loss sustained or sustained, directly or indirectly, through the use of its equipment, or its statements or opinion concerning the results of any test, tools lost or damaged in the hole shall be paid for at cost by the party for whom the test is made.



# TRILOBITE TESTING INC.

1515 Commerce Parkway • Hays, Kansas 67601

## Test Ticket

NO. 51935

Well Name & No. Harbaeck #6 Test No. 3-Straddle Date 2/20/14  
 Company Sasen Oil Co., LLC Elevation 1831 KB 1824 GL  
 Address 3718-83<sup>rd</sup> St. P.O. Box 701 Russell, Ks. 67665  
 Co. Rep / Geo. Steve Reed Rig Royal Drilling Rjg #2  
 Location: Sec. 7 Twp. 16s Rge. 10w Co. Ellsworth State Ks.

Interval Tested 3298 - 3325 Zone Tested Arbuckle  
 Anchor Length 27' - 75' tail Drill Pipe Run 3318 Mud Wt. 9.2  
 Top Packer Depth 3293 Drill Collars Run 0 Vis 55  
 Bottom Packer Depth 3298 Wt. Pipe Run 0 WL 8  
 Total Depth 3325 Chlorides 4,000 ppm System LCM 1<sup>st</sup>

Blow Description IF: Weak blow. B.O.B. in 30 min.  
ISI: Weak blow. Surf. - 1/2"  
FF: Weak blow. Surf. - 13"  
FBI: No blows.

Rec	Feet of	%gas	%oil	%water	%mud
<u>240'</u>	<u>Feet of G.I.P.</u>				
<u>180'</u>	<u>Feet of WCMGO</u>	<u>10</u>	<u>50</u>	<u>5</u>	<u>35</u>
Rec	Feet of	%gas	%oil	%water	%mud
Rec	Feet of	%gas	%oil	%water	%mud
Rec	Feet of	%gas	%oil	%water	%mud

Rec Total 180' BHT \_\_\_\_\_ Gravity N.A. API RW N.C. @ \_\_\_\_\_ °F Chlorides 4,000 ppm

(A) Initial Hydrostatic <u>1574</u>	<input checked="" type="checkbox"/> Test <u>1150</u>	T-On Location <u>1130</u>
(B) First Initial Flow <u>24</u>	<input type="checkbox"/> Jars _____	T-Started <u>0511</u>
(C) First Final Flow <u>61</u>	<input type="checkbox"/> Safety Joint _____	T-Open <u>0651</u>
(D) Initial Shut-In <u>857</u>	<input type="checkbox"/> Circ Sub _____	T-Pulled <u>0945</u>
(E) Second Initial Flow <u>65</u>	<input type="checkbox"/> Hourly Standby _____	T-Out <u>1140</u>
(F) Second Final Flow <u>95</u>	<input type="checkbox"/> Mileage _____	Comments _____
(G) Final Shut-In <u>774</u>	<input type="checkbox"/> Sampler _____	
(H) Final Hydrostatic <u>1566</u>	<input checked="" type="checkbox"/> Straddle <u>600</u>	<input type="checkbox"/> Ruined Shale Packer _____
	<input type="checkbox"/> Shale Packer _____	<input type="checkbox"/> Ruined Packer _____
	<input type="checkbox"/> Extra Packer _____	<input type="checkbox"/> Extra Copies _____

Initial Open 45  
 Initial Shut-In 45  
 Final Flow 45  
 Final Shut-In 45

Sub Total 0  
 Total 1750  
 MP/DST Disc't \_\_\_\_\_

Approved By [Signature] Our Representative [Signature]

Trilobite Testing Inc. shall not be liable for damaged of any kind of the property or personnel of the one for whom a test is made, or for any loss suffered or sustained, directly or indirectly, through the use of its equipment, or its statements or opinion concerning the results of any test, tools lost or damaged in the hole shall be paid for at cost by the party for whom the test is made.