



**TRILOBITE TESTING, INC**

# DRILL STEM TEST REPORT

Culbreath Oil & Gas Company

**1-10s-26w-Graham Co**

1532 S Peoria AVE  
Tulsa OK 74120

**Mader #3-1**

Job Ticket: 57568

**DST#: 2**

ATTN: Steve Murphy

Test Start: 2014.04.16 @ 04:32:06

## GENERAL INFORMATION:

Formation: **LKC J**

Deviated: No Whipstock: ft (KB)

Time Tool Opened: 06:25:56

Time Test Ended: 11:54:06

Test Type: Conventional Bottom Hole (Reset)

Tester: Tate Lang

Unit No: 49

**Interval: 3998.00 ft (KB) To 4024.00 ft (KB) (TVD)**

Reference Elevations: 2581.00 ft (KB)

Total Depth: 4024.00 ft (KB) (TVD)

2574.00 ft (CF)

Hole Diameter: 7.88 inches Hole Condition:

KB to GR/CF: 7.00 ft

**Serial #: 8898 Outside**

Press@RunDepth: 18.76 psig @ 3999.00 ft (KB)

Capacity: 8000.00 psig

Start Date: 2014.04.16

End Date:

2014.04.16

Last Calib.:

2014.04.16

Start Time: 04:32:07

End Time:

11:54:06

Time On Btm:

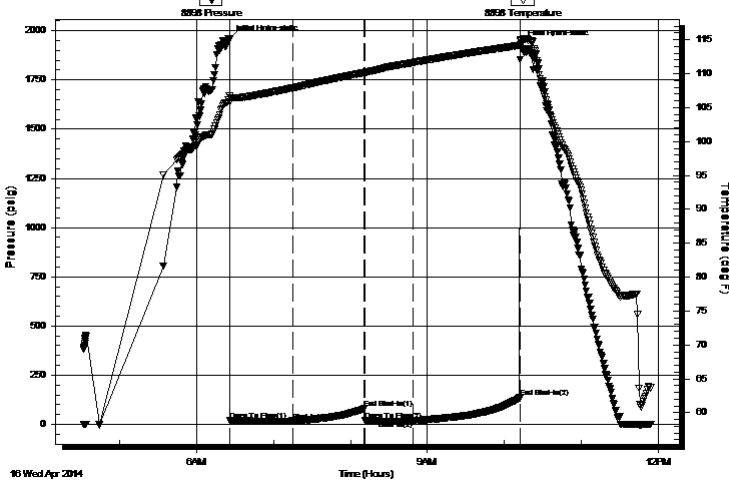
2014.04.16 @ 06:25:36

Time Off Btm:

2014.04.16 @ 10:12:45

**TEST COMMENT:** Weak surface blow built to 1 in  
Dead no blow back  
Dead no blow  
Dead no blow back

Pressure vs. Time



## PRESSURE SUMMARY

Time (Min.)	Pressure (psig)	Temp (deg F)	Annotation
0	1957.59	106.67	Initial Hydro-static
1	19.20	105.80	Open To Flow (1)
50	17.99	107.90	Shut-In(1)
106	79.95	110.18	End Shut-In(1)
106	20.34	110.15	Open To Flow (2)
144	18.76	111.64	Shut-In(2)
227	135.55	114.17	End Shut-In(2)
228	1930.86	114.97	Final Hydro-static

## Recovery

Length (ft)	Description	Volume (bbl)
2.00	2%O 98%O	0.01

\* Recovery from multiple tests

## Gas Rates

	Choke (inches)	Pressure (psig)	Gas Rate (Mcf/d)



**TRILOBITE  
TESTING, INC**

# DRILL STEM TEST REPORT

## FLUID SUMMARY

Culbreath Oil & Gas Company

**1-10s-26w-Graham Co**

1532 S Peoria AVE  
Tulsa OK 74120

**Mader #3-1**

Job Ticket: 57568

**DST#: 2**

ATTN: Steve Murphy

Test Start: 2014.04.16 @ 04:32:06

### Mud and Cushion Information

Mud Type: Gel Chem

Cushion Type:

Oil API:

deg API

Mud Weight: 9.00 lb/gal

Cushion Length:

ft

Water Salinity:

ppm

Viscosity: 56.00 sec/qt

Cushion Volume:

bbbl

Water Loss: 7.20 in<sup>3</sup>

Gas Cushion Type:

Resistivity: ohm.m

Gas Cushion Pressure:

psig

Salinity: 4000.00 ppm

Filter Cake: 1.00 inches

### Recovery Information

Recovery Table

Length ft	Description	Volume bbl
2.00	2%O 98%O	0.010

Total Length: 2.00 ft      Total Volume: 0.010 bbl

Num Fluid Samples: 0

Num Gas Bombs: 0

Serial #:

Laboratory Name:

Laboratory Location:

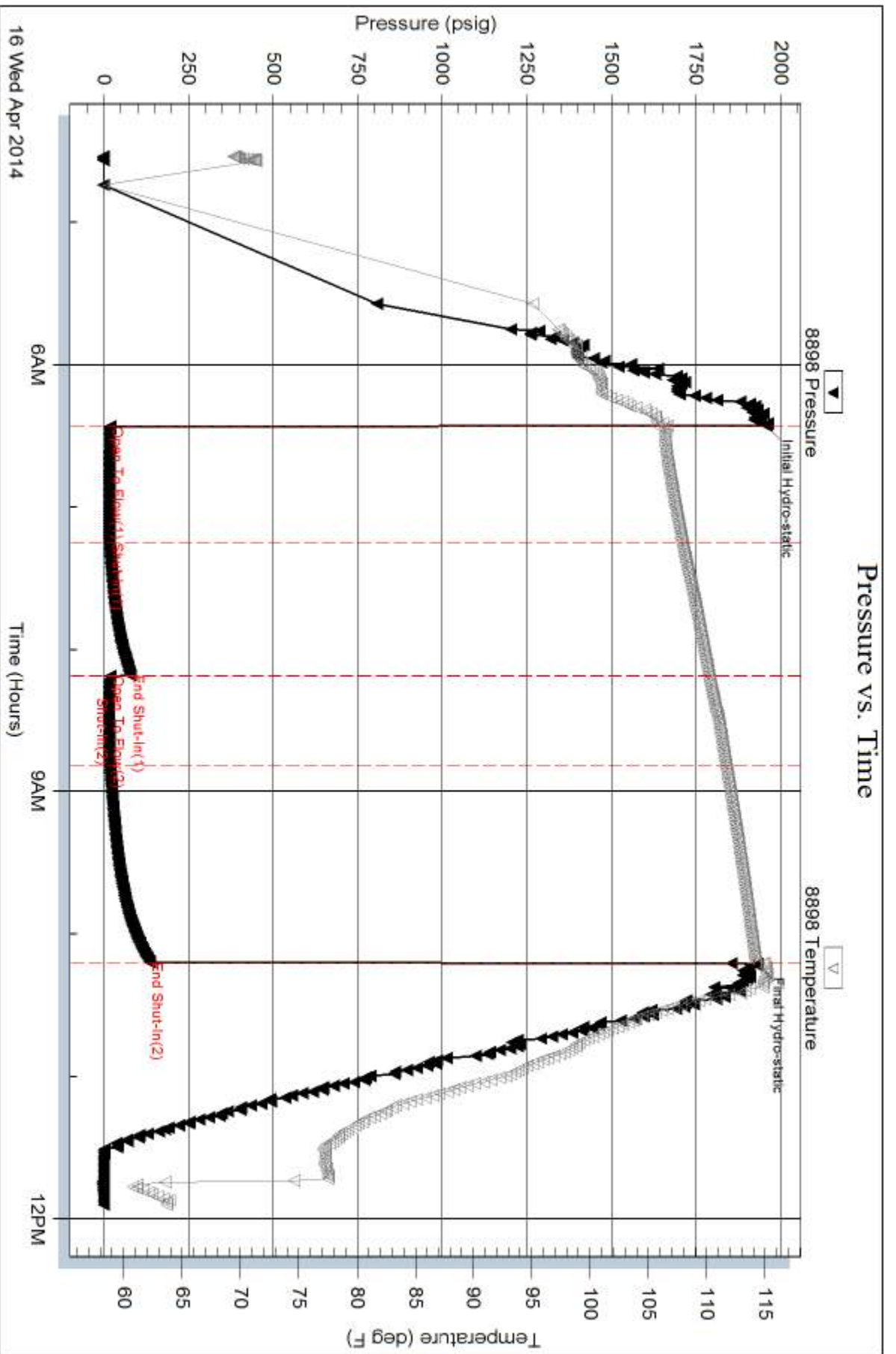
Recovery Comments:

Serial #: 8898

Outside Culbreath Oil & Gas Company

Wader #3-1

DST Test Number: 2



Triobite Testing, Inc

Ref. No: 57568

Printed: 2014.04.16 @ 13:21:16